



Juneau International Airport Master Plan Update



Public Open House #2

April 8, 2026



Agenda



- Welcome & Introductions
- Master Planning Process
- Schedule
- Overview & FAA Forecast
- Development Plans
- Implementation Plan
- Questions



Master Planning Process






Juneau International Airport



What is a Master Plan?

A development guide including:

Projection of the Airport's growth & needs for 20-years

-  physical facilities
-  timing
-  costs
-  adjacent land uses
-  environmental considerations



Step-by-step description of the logic used in formulating the plan



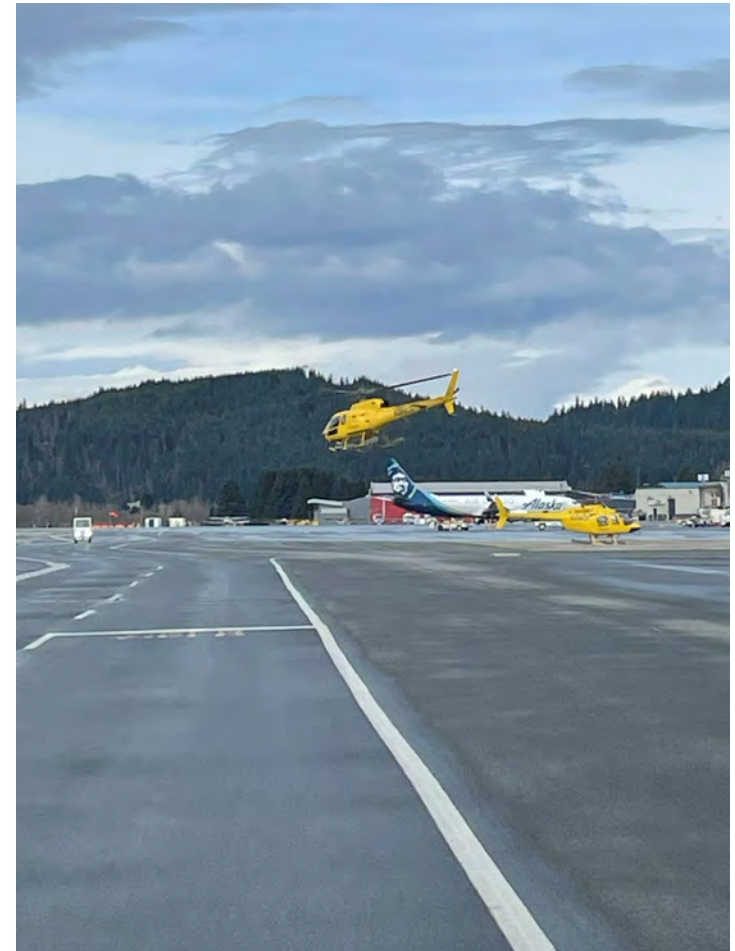
Display of the plan in both graphical and written form

** Positions the Airport to compete for FAA funding*



Major Objectives

- **Improve** airport operations, safety, and overall performance
- **Strengthen the economic and social value** of the airport in the community
- **Plan for long-term aviation needs** in Juneau and the region
- **Ensure environmentally responsible** airport development
- **Align** with existing local and regional plans
- **Identify flexible planning options** that support these goals over time



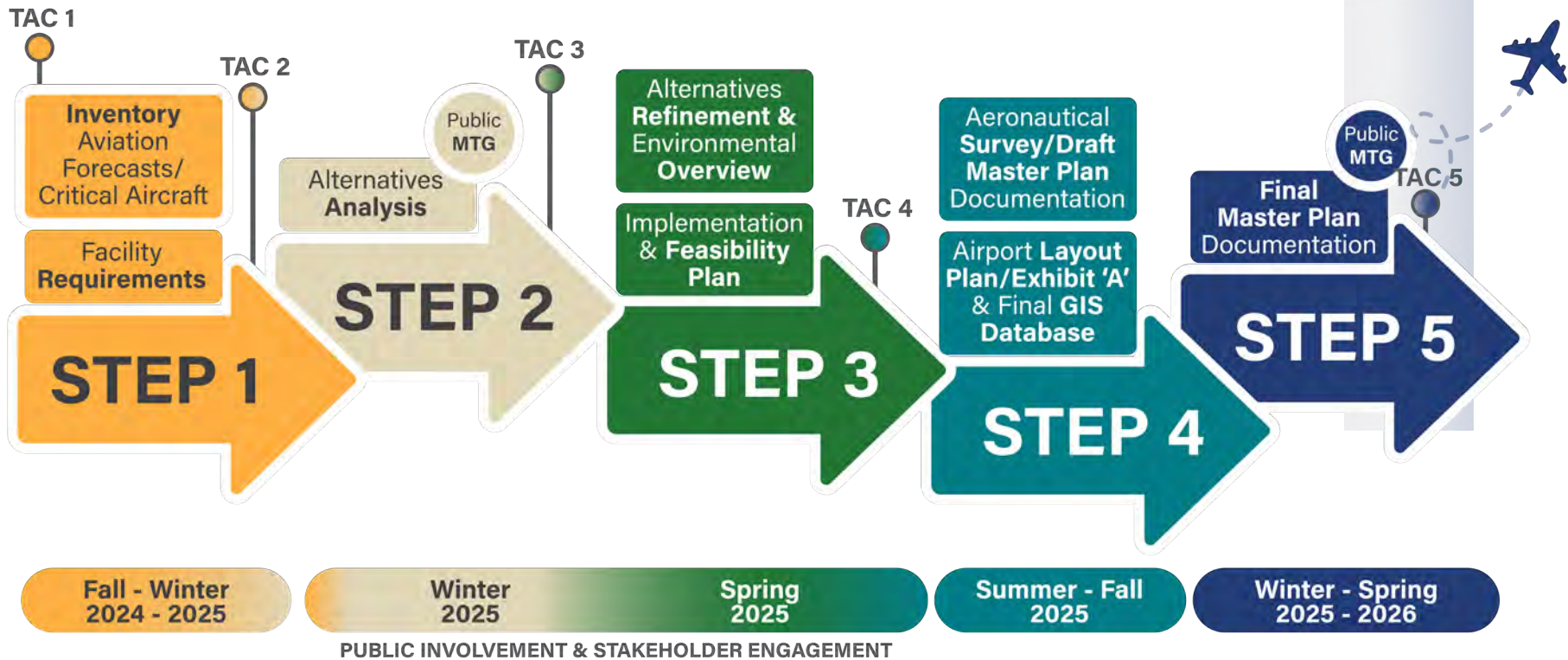


Airport Master Planning

- Recommendations from previous planning efforts
- Changes since previous master plan
- Changes in FAA Airport Design guidance
- Aerial survey & mapping IAW FAA's Airports Geographic Information System
- Airspace & land use compatibility
- Optimize land utilization
- Maximize revenue opportunities
- Sustainable solutions for the future



Master Planning Process





Overview & FAA Forecast

Juneau International Airport



Overview of Airport Facility

Non-hub commercial service airport

General aviation facilities on 662 acres

- Runways capable of handling commercial and float plane aircraft
- Airport Traffic Control Tower (ATCT)
- Non-precision instrument approaches
- Cargo/ground handling, fueling, Fixed Base Operator and aircraft maintenance services
- Air cargo service to meet logistics and distribution needs





Activity Forecast



Operations



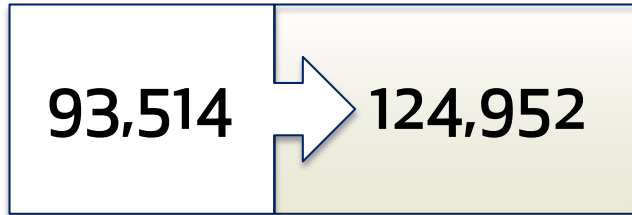
Based Aircraft



Enplanements

2023

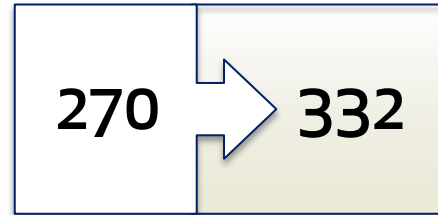
2043



+ 1.46%

2023

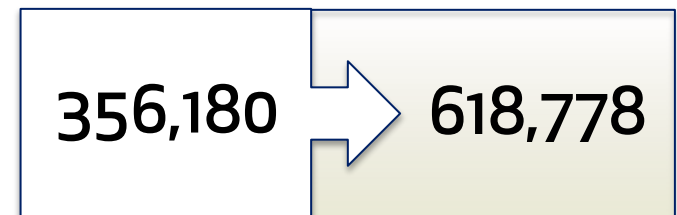
2043



+ 1.04%

2023

2043



+ 2.80%

Runway 8,857 ft long → 9,200 ft long



Critical Aircraft:
Boeing 737-900





Development Plans

Juneau International Airport



Evaluation Criteria

Table 5-1: Evaluation Criteria	
Criteria	Definition
Achievement of Objective	This criterion is based on achieving the specific need identified in the Facility Requirements chapter. Alternatives are assessed based on the degree to which they satisfy the objective.
Airport Design Standards	The proposed development should satisfy applicable airport design standards and maintain or improve the safety and efficiency of the airport.
Flexibility	The alternative should support a reasonable level of flexibility to accommodate changes in demand and include the ability to expand in the future.
Collateral Impacts	This criterion evaluates the extent to which an alternative requires changes or improvements to existing airport facilities which otherwise would not require changes or improvements (e.g., Relocation of a road that is impacted by a general aviation alternative is considered a collateral impact).
Probable Cost	The preferred alternative should be cost effective, within the means of JNU to secure funding, and minimize the long-term financial commitment by JNU or its tenants.
Efficiency of Construction Phasing	Construction of the proposed improvements should be implemented without undue interference to existing operations. As future development options are considered, JNU must consider the ability to stage materials and construction equipment on or near the airport as the airport is space constrained.
Environmental Compatibility	The preferred alternative should be consistent with environmental regulations and minimize impacts to the environmental impact categories identified in FAA Orders 1050.1F, <i>Environmental Impacts: Policies and Procedures Desk Reference</i> , and 5050.4B, <i>National Environmental Policy Act (NEPA) Implementing Instructions for Airport Actions</i> . Future development should support growth while minimizing impacts to the environment.

Source: AC 150/5070-6B; Michael Baker International, 2025



Airport Development

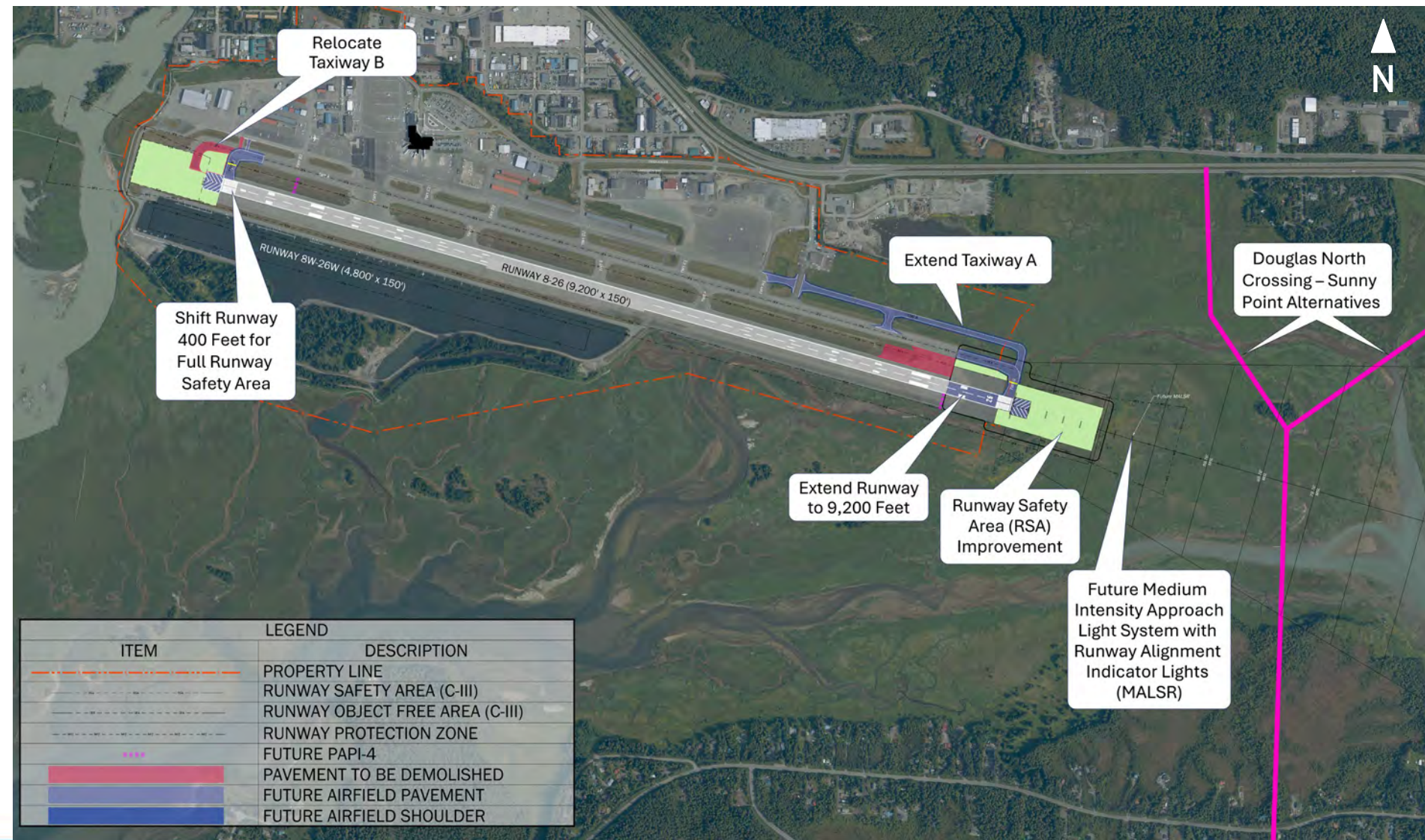
Runway Terminal Northeast Northwest



ITEM	LEGEND	DESCRIPTION
		PROPERTY LINE
		RUNWAY SAFETY AREA (C-III)
		RUNWAY OBJECT FREE AREA (C-III)
		FUTURE BUILDING
		FUTURE ACCESS AND PARKING
		FUTURE AIRFIELD PAVEMENT
		FUTURE AIRFIELD SHOULDER
		TO BE REMOVED
		SNOW STORAGE
		GRASS
		FUTURE PARKING GARAGE



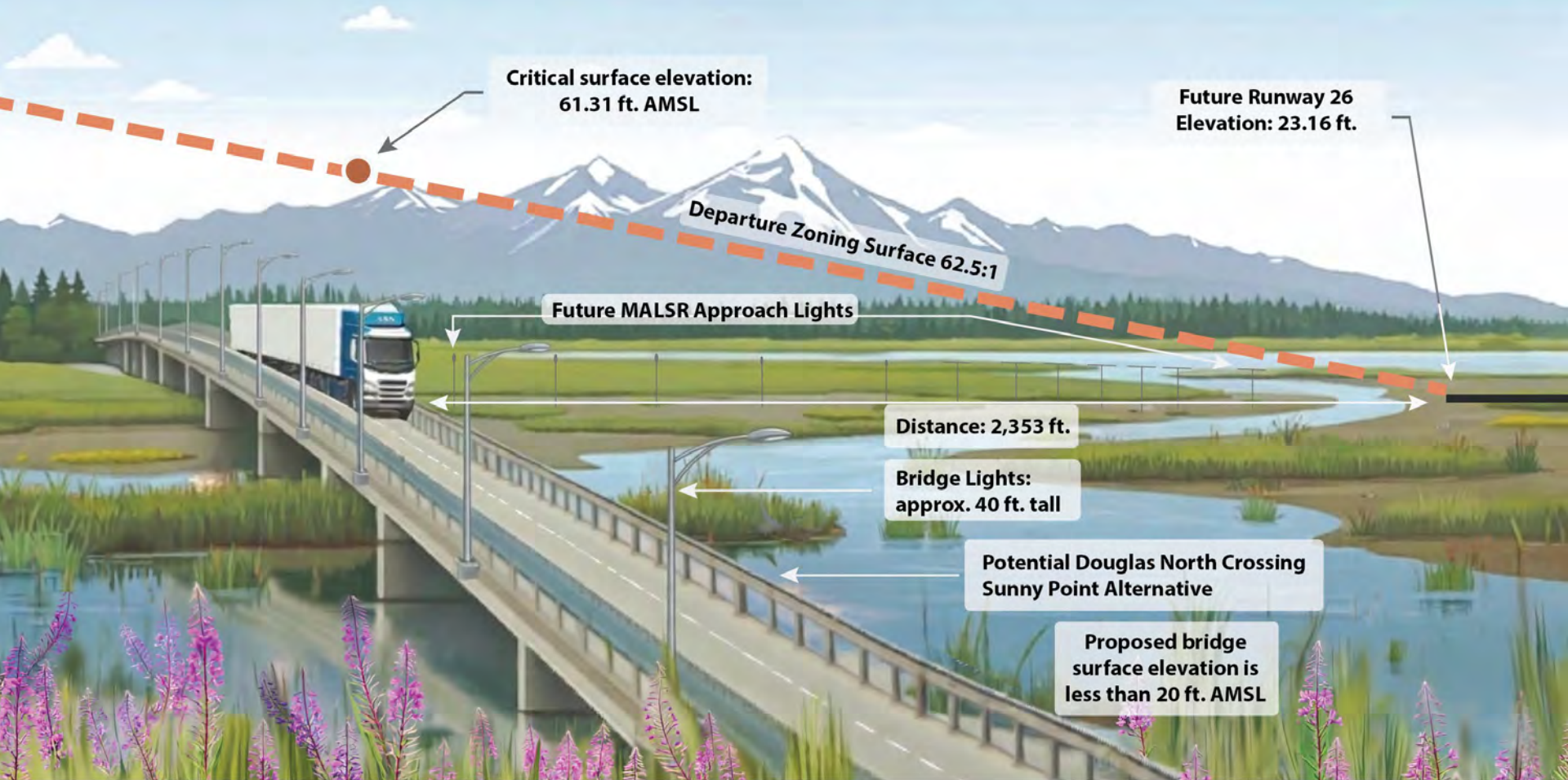
Airfield Development - Runway





Airfield Development - Runway

View Direction: Looking South from
the Northeast end of Runway 26



Critical surface elevation:
61.31 ft. AMSL

Future Runway 26
Elevation: 23.16 ft.

Departure Zoning Surface 62.5:1

Future MALSR Approach Lights

Distance: 2,353 ft.

Bridge Lights:
approx. 40 ft. tall

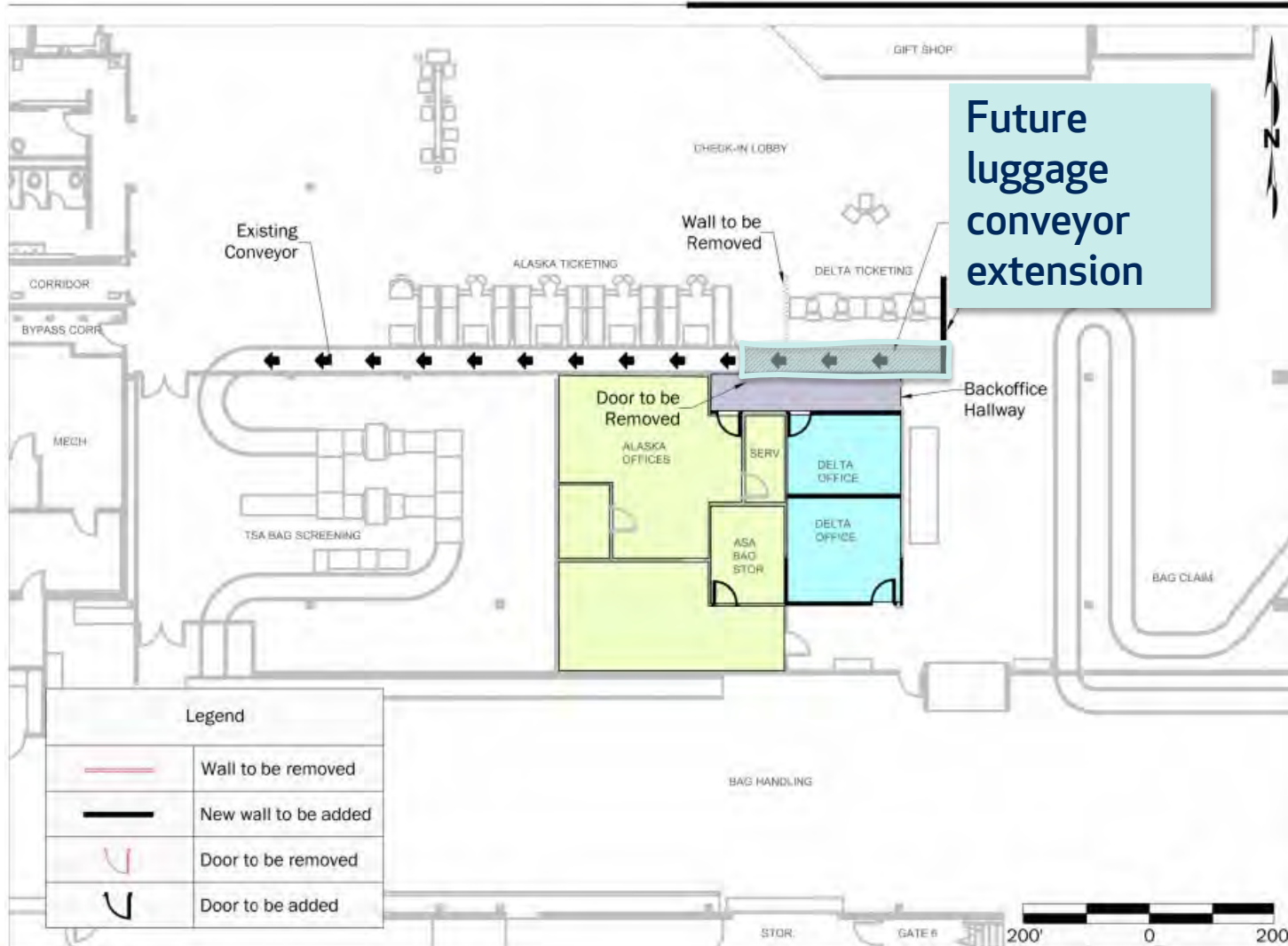
Potential Douglas North Crossing
Sunny Point Alternative

Proposed bridge
surface elevation is
less than 20 ft. AMSL



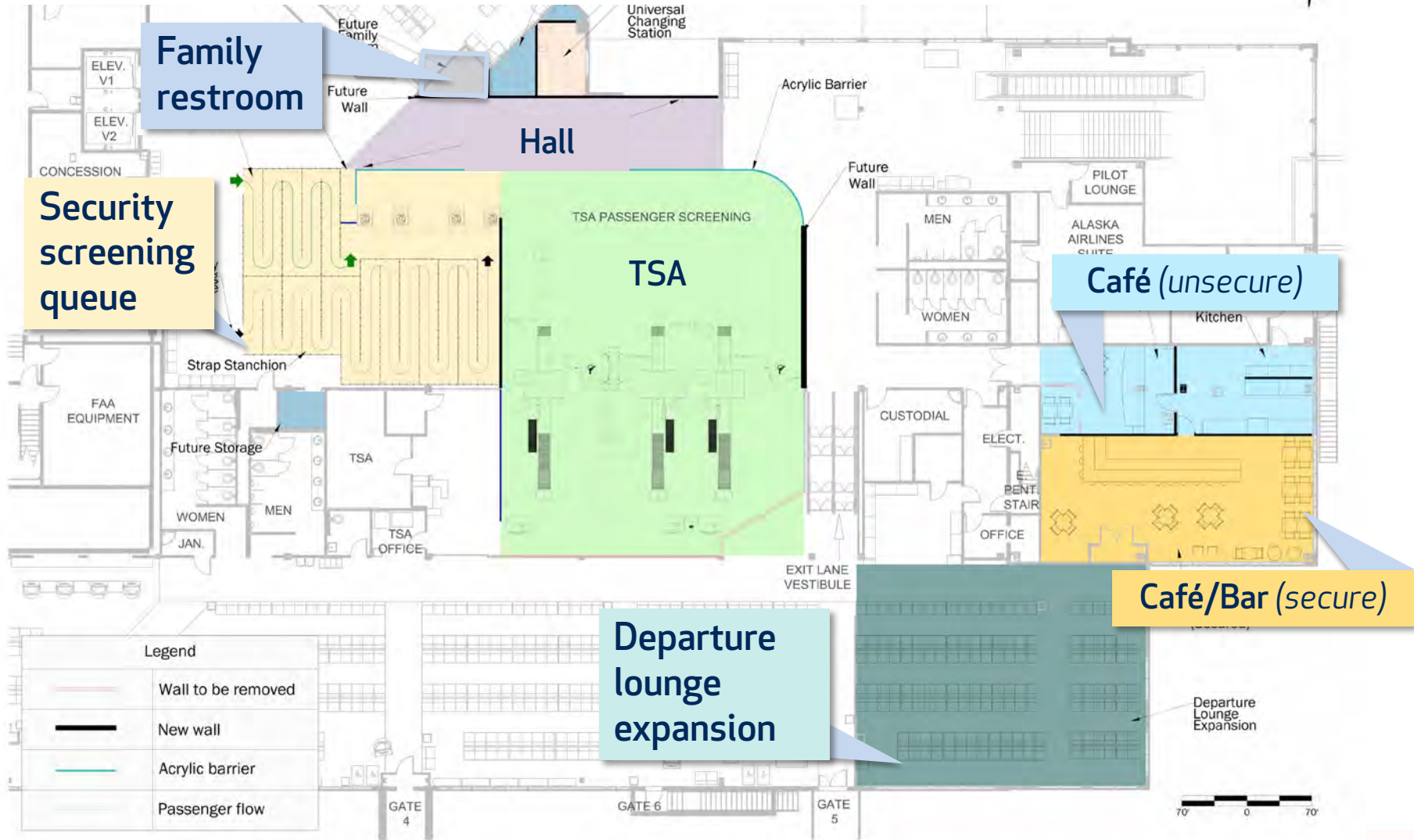
U T 2

Passenger Terminal - Level 1



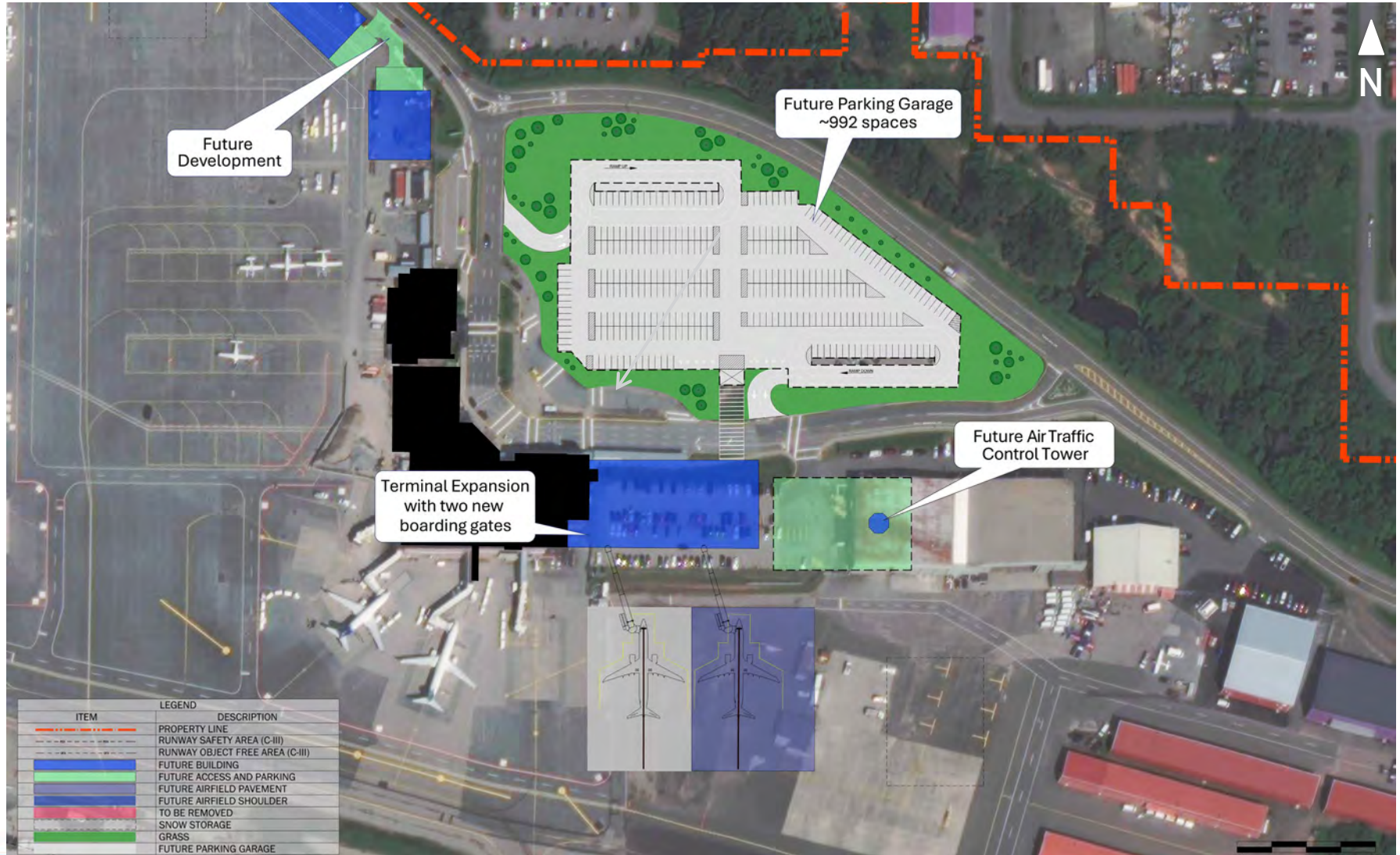


Passenger Terminal - Level 2



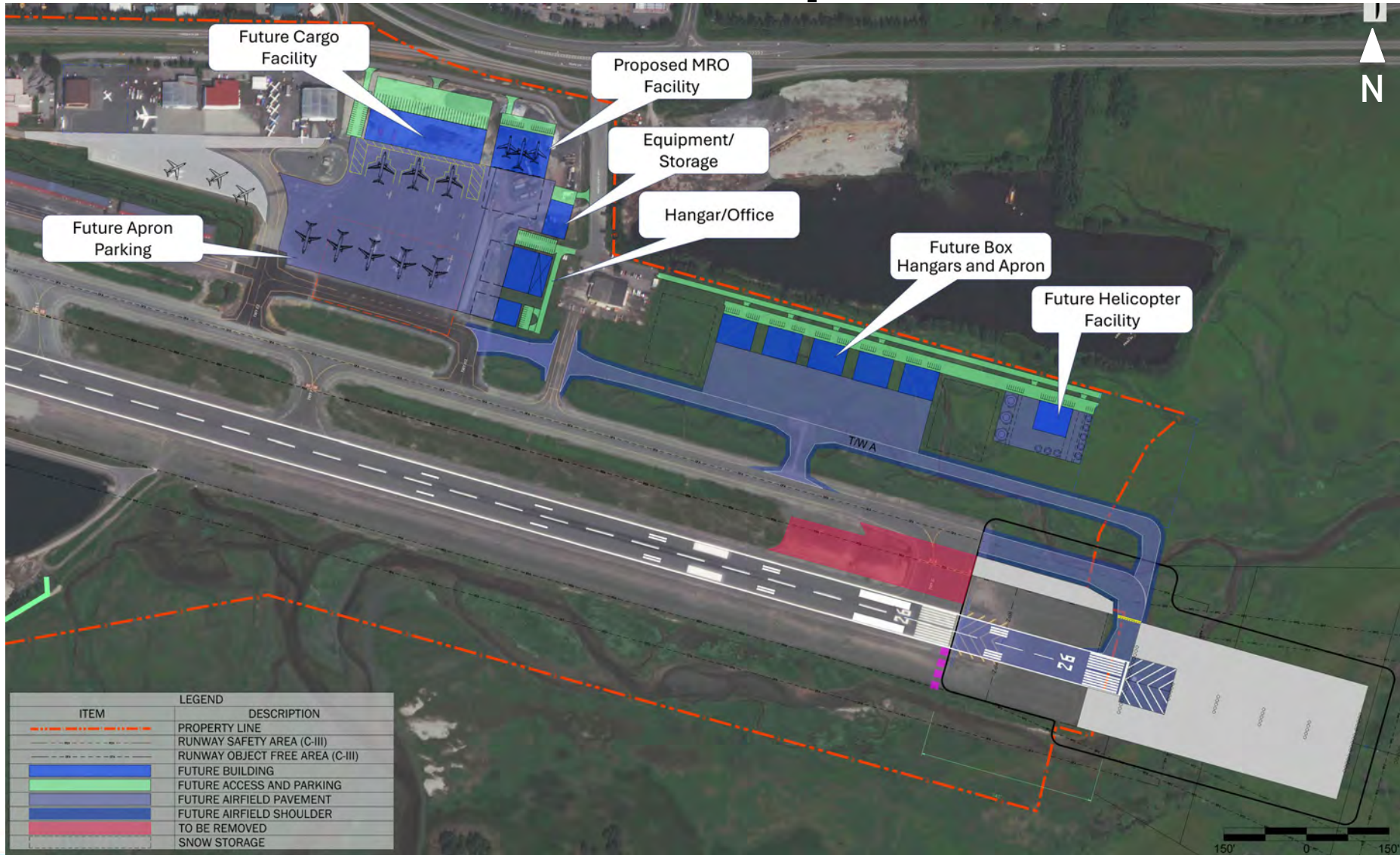


Terminal Area Development



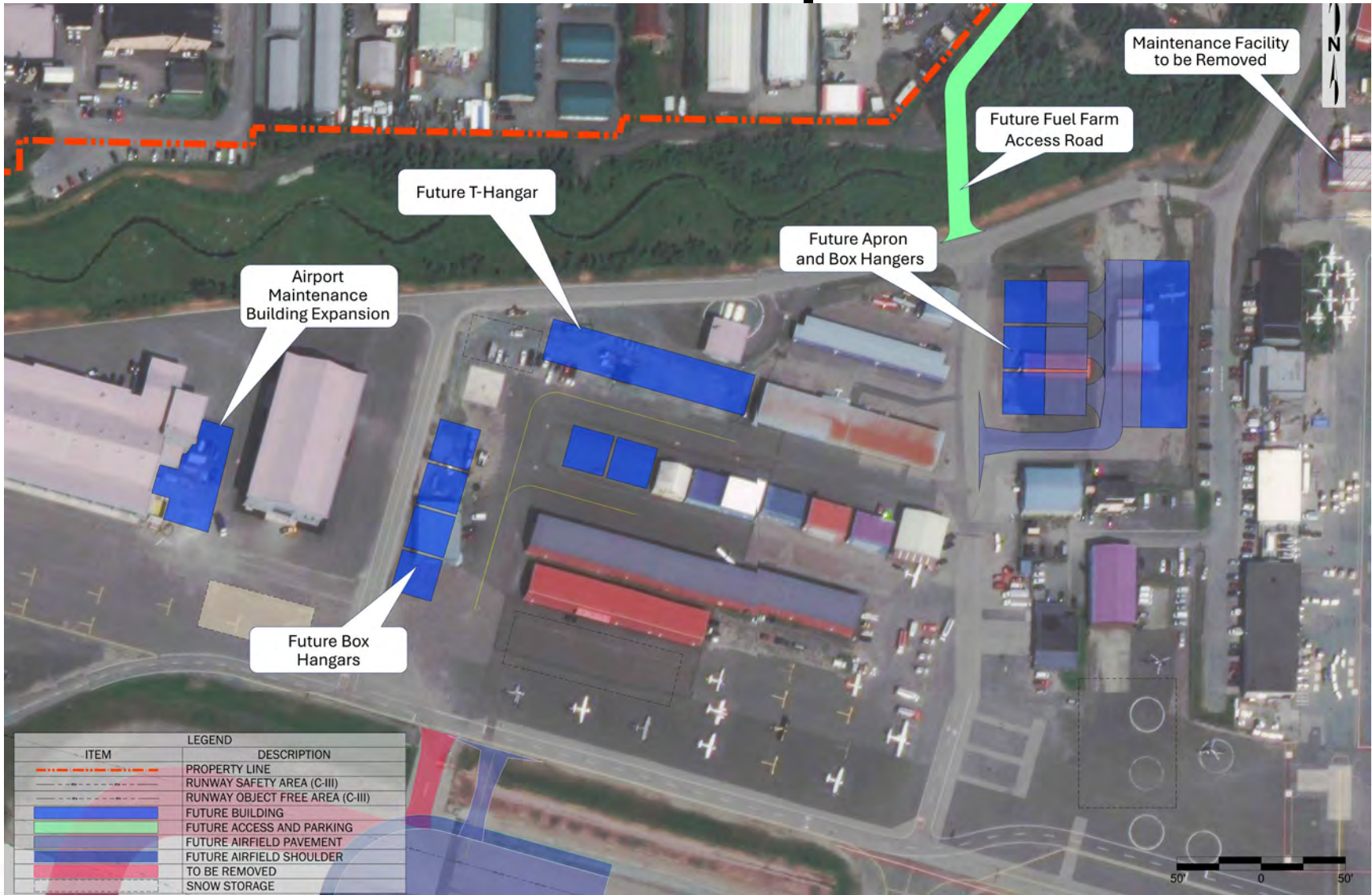


Northeast Development Area





Northwest Development Area





Implementation Plan

Juneau International Airport

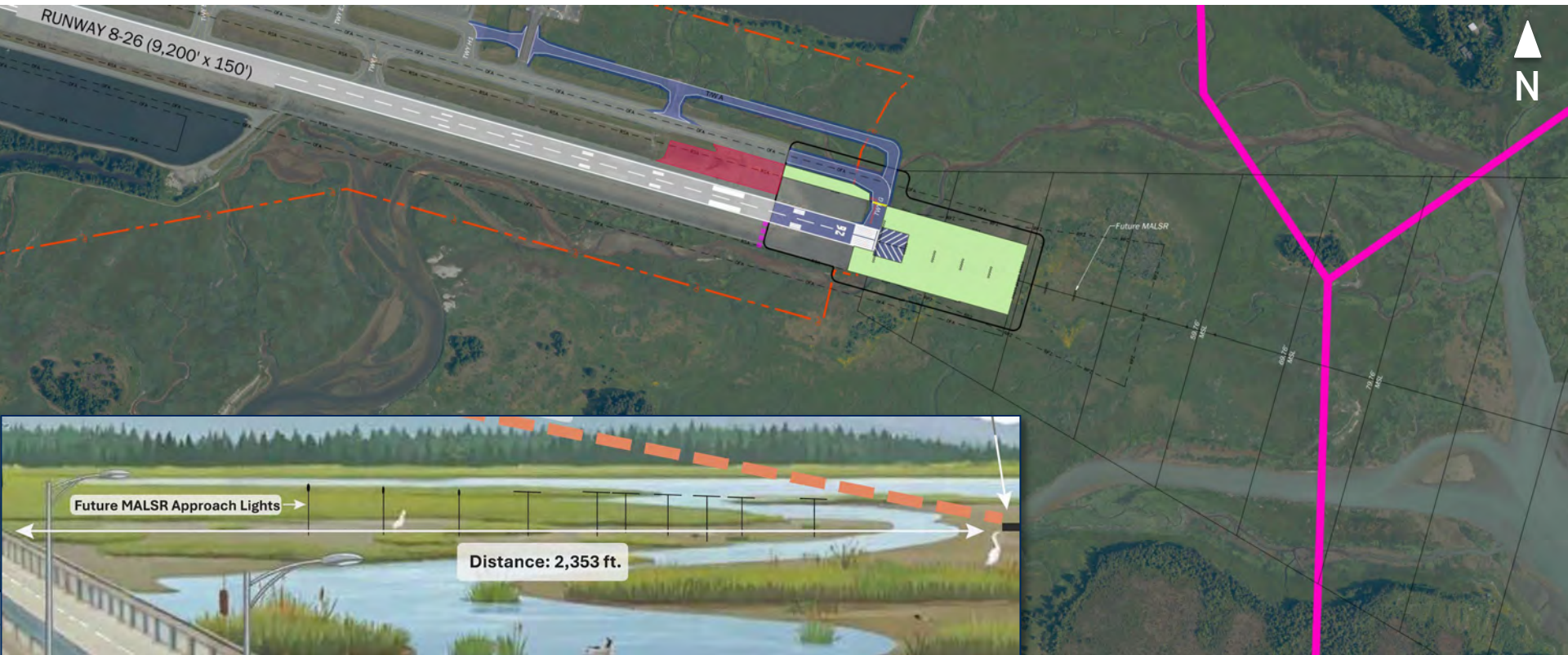
Short Term Projects (2024-2029)

Short Term Planning Period (2026-2030)		
1	Replace ARFF truck (2003) 1,500 Gallons	2024
2	Planning Master Plan/ALP	2024
3	Acquire ARFF Wetland Rescue Vehicle	2025
4	Acquire Snow Removal Equipment	2025
5	Runway 26 MALSR - Design	2026
6	E-1 Ramp - Design	
7	Acquire Snow Removal Equipment	
8	ADA Elevator Access Departure Lounge Ground Load Gate 6 - Construct	
9	Safety Area Grade; RW Shoulder/NAVAIDs - Construct	
10	Terminal Area Plan	
11	Acquire Zero Emissions Vehicles (ZEV)	
12	Runway and Movement Areas Remarking (5 Years, Year 1)	
13	Reconstruct E-1 Ramp	2027
14	Runway 26 MALSR - Construct	
15	Conversion Runway 8-26 to 9-27 - MAGVAR - Design	
16	Runway and Movement Areas Remarking (5 Years, Year 2)	
17	Departure Lounge and Security Area Improvements - Design	
18	Outbound Baggage Belt Improvements - Design	
19	Channel Flying Property Acquisition (FAA compliance)	
20	Camera/Surveillance Equipment	
21	Runway Edge Light Replacement and VASI upgrade to PAPI	
22	Replace Trash Compactors/Pads	
23	Construction of Air Cargo Terminal (Northeast)	2028
24	Northeast Apron Rehabilitation and Reconfiguration	
25	Snow Melt Pad	
26	Expansion of Departure Lounge	
27	Security Checkpoint Capacity Improvements	
28	Conversion RWY 8/26 to 9/27 MAGVAR - Construct	
29	Runway and Movement Areas Remarking (5 Years, Year 3)	
30	Outbound Baggage Belt Improvements - Construct	
31	Shell Simmons Dr and Yandukin Dr Terminal Road Upgrade - Design	
32	Multi-Modal Feasibility Plan	
33	Jordan Creek Culvert at Runway 8-26 Repair	2029



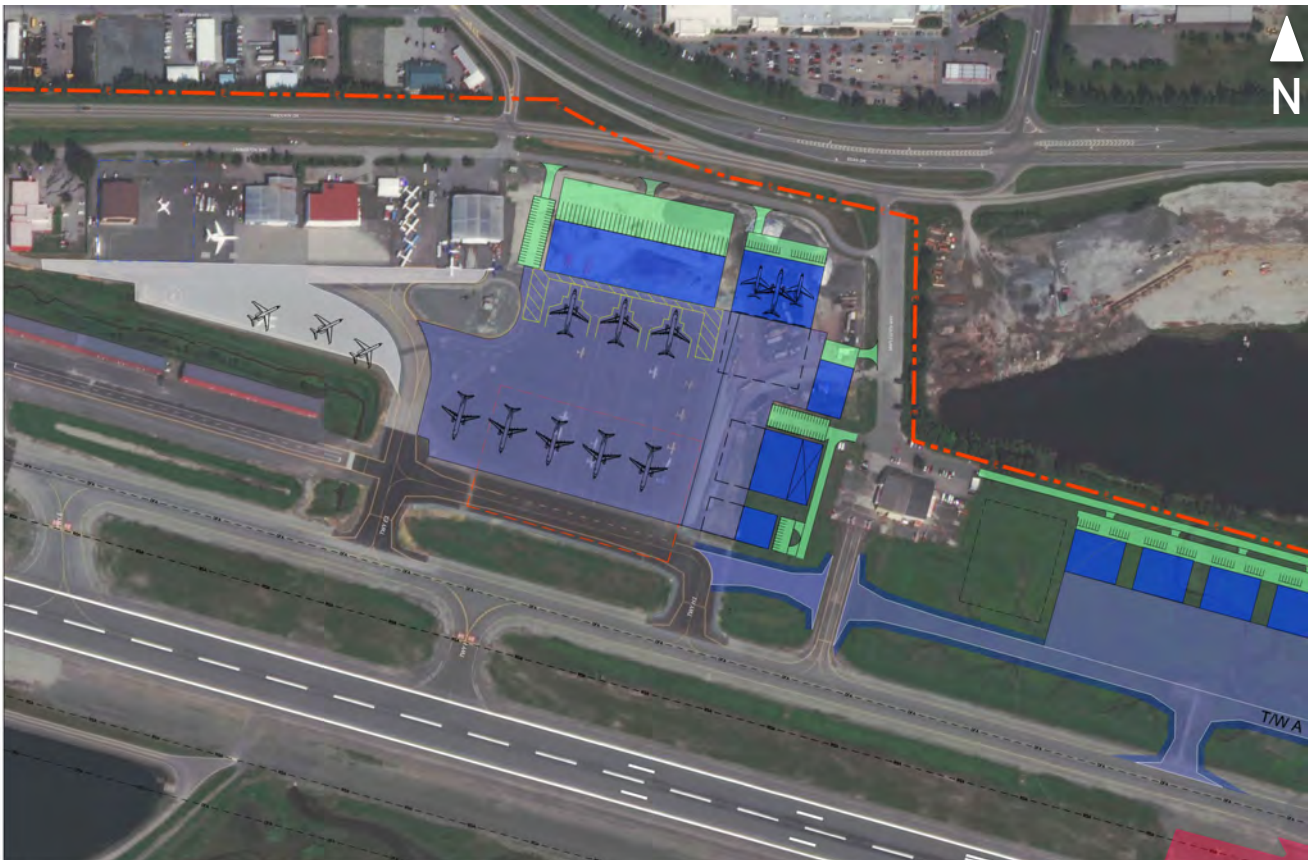


Future Medium Intensity Approach Light System with Runway Alignment Indicator Lights (MALSR)





Future Cargo Facility & Future Apron Parking



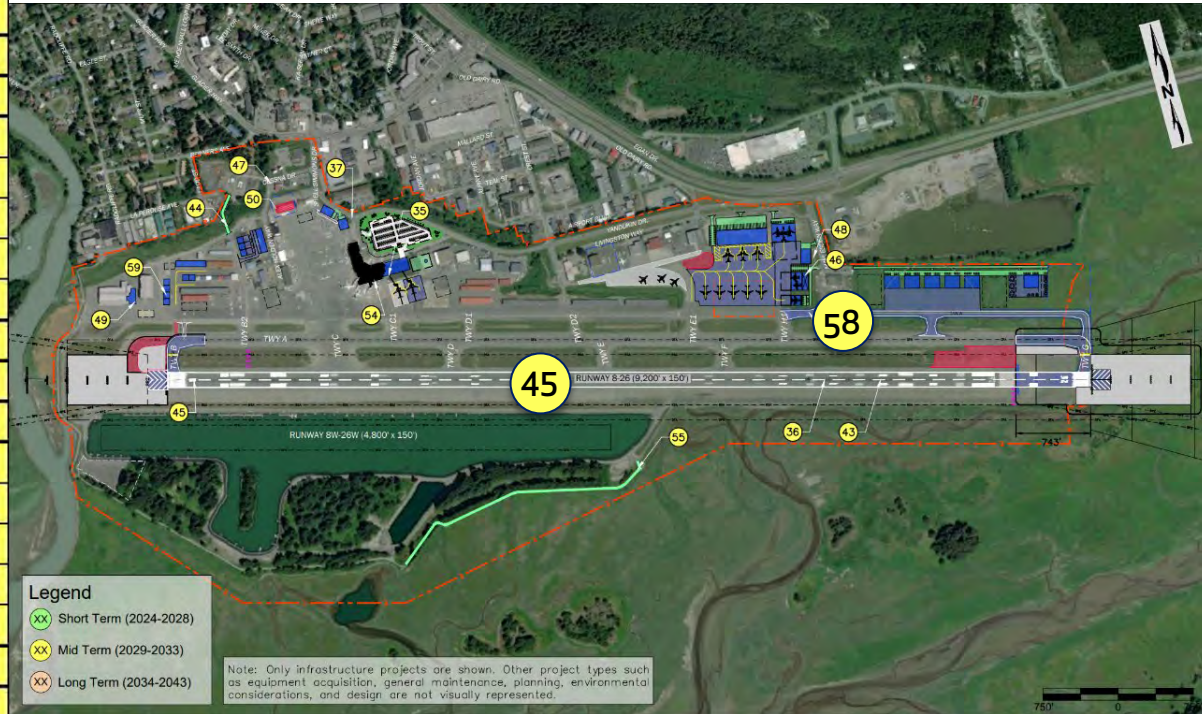


Shell Simmons Dr & Yandukin Dr Terminal Road Upgrade



Mid Term Projects (2029-2033)

Mid-Term Planning Period (2030-2034)		
34	Passenger Boarding Bridge Gate 6 Design	2029
35	Passenger Boarding Bridge Gate 6 Install	↓
36	Runway and Movement Areas Remarking (5 Years, Year 4)	
37	Shell Simmons Dr and Yandukin Dr Terminal Road Upgrade - Construct	
38	Design Fuel Farm Access Rd (airside fence - RSA phase)	
39	Runway Rehabilitation - Design	
40	Acquire Snow Removal Equipment	2030
41	Emergency Vehicle Access Road (EVAR) Extension - Design	↓
42	Remaining NEDA/TL /F-1 Rehab/Environmental - Design	
43	Runway and Movement Areas Remarking (5 Years, Year 5)	
44	Fuel Farm Access Rd - Construct	
45	Runway Rehabilitation - Construct	
46	Site-Prep Northeast Hangar and Support Facilities (19,900+10,680 SF)	
47	Design & Reconstruct Alex Holden Way, Cessna and Renshaw	
48	NE Development Area Sewer Infrastructure	
49	Phase 4 SREB (remainder of maintenance shop) Non-FAA Eligible	
50	Demolition of Existing Maintenance Shop	
51	ARFF Truck Replacement (2016) 3,000 gallons	
52	Planning and Design of Terminal Expansion	
53	Snow Removal Equipment Acquisition 2030	
54	Replace Bag Claim (2030)	
55	Construct Emergency Vehicle Access Road (EVAR) extension 2031	2031
56	Planning and Design Parking Garage	2032
57	Design of Taxiway H1 Extension	↓
58	Extension of Taxiway H1	2033
59	Site-Prep for Box Hangar (4 / 60' x 60') Northwest	↓



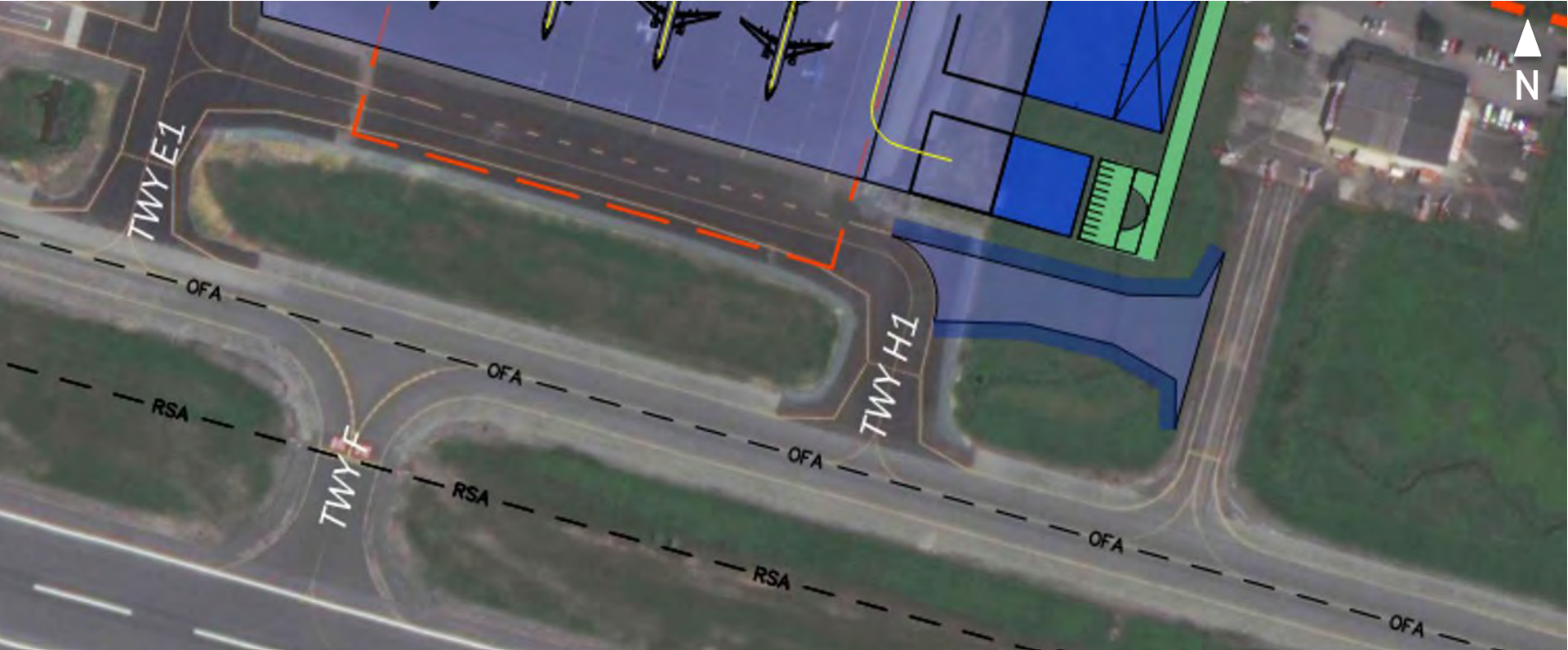


Runway Rehabilitation





Extension of Taxiway H1



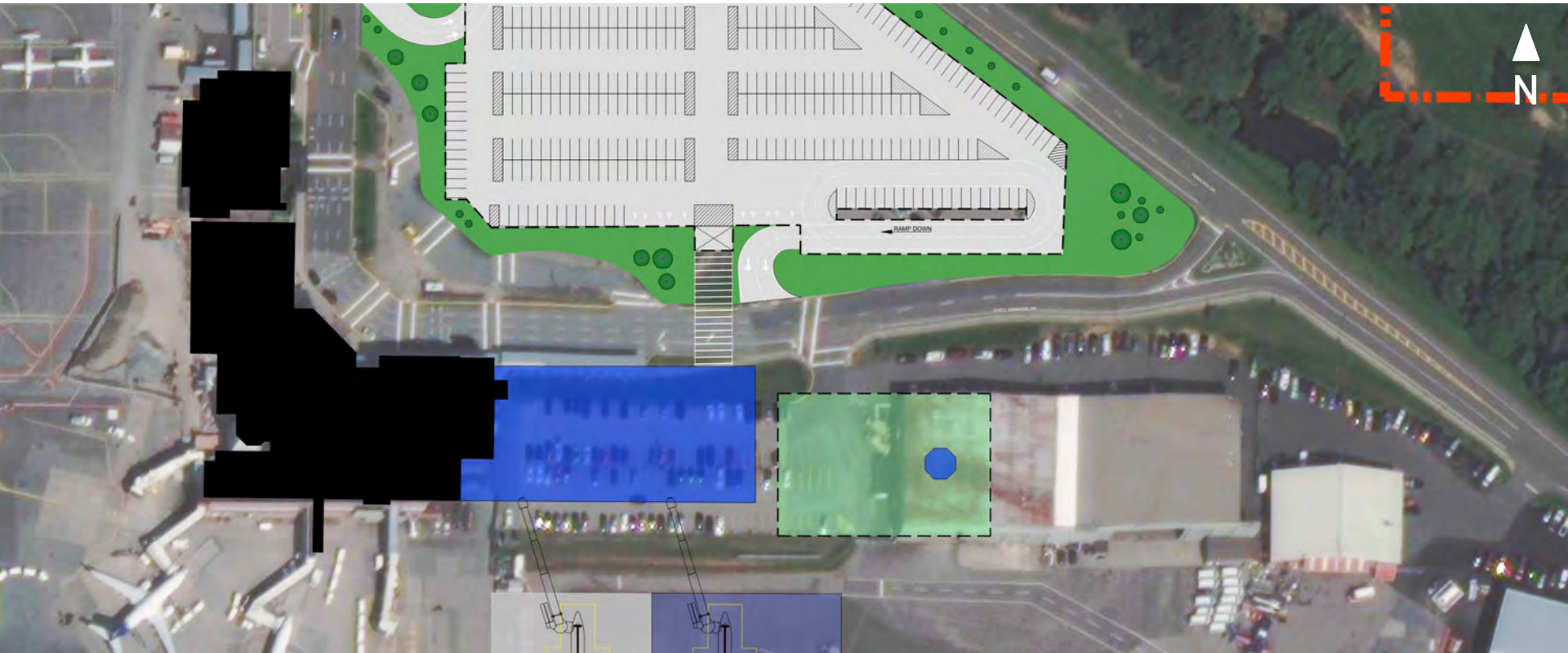
Long Term Projects (2034-2043)

Long-Term Planning Period (2034-2043)		
60	Airport Master Plan Update	2034
61	Replace Outbound Baggage Belt (2034)	↓
62	PBB Gate 2 Replacement	2035
63	Site-Prep for Box Hangar (2 / 60' x 60') Northwest	↓
64	Parking Garage/Relocate Rental Cars for Terminal Expansion	↓
65	Main Apron /Gate Rehabilitation	2036
66	Decommission of Airfield Lighting Regulator Vault (ALRV)	↓
67	NE/NW Apron Rehabilitation	↓
68	Terminal Apron New Parking Positions (Gate 7)	↓
69	Landside Access Roads Pavement Rehabilitation	↓
70	Passenger Terminal Expansion Construction	2037
71	Site-Prep Northeast Hangar Facilities (10,000 SF)	↓
72	Construct T-hangar (5 units)	↓
73	Snow Removal Equipment Acquisition	↓
74	Passenger Boarding Bridge Install (Gate 7)	2038
75	Site-Prep Aviation Related Facilities - Northeast (15,000 SF)	↓
76	Northwest New Taxi lane	↓
77	ARFF Truck Replacement (2024) 1,500 gallons	2039
78	Site-Prep for Box Hangar (60' x 60') 3 units - Northwest	↓
79	Relocation of AWOS	2040
80	Design and Environmental - East End Access Road	↓
81	Construct East End Access Road	2032
82	Site -Prep Construction of Helicopter Facilities (Northeast)	↓
83	PBB Gate 5 Replacement	↓
84	Taxiway Rehabilitation	↓
85	Site-Prep for MRO and Supporting Facilities	↓
86	Construct T-hangar (4 units)	↓
87	Construct New Eastern Apron, Site-prep for Box Hangars (18,000 SF) 5 Units	2043
88	Relocate/Construct FAA ATCT	↓
Beyond 20-Year Planning Period (2044 +)		
89	Terminal Rehabilitation / Extend 2045	2044
90	Design Taxiway C Reconfiguration (RIM)	2045
91	Construct TWY C (RIM)	↓
92	Design Runway and Parallel Taxiway Extension	2046
93	Design Taxiway F Extension	↓
94	Runway Shift/Extension	2047
95	Taxiway B and G Relocation	↓
96	Taxiway F Extension	2048
97	Main Apron /Gate Rehab (2044)	↓



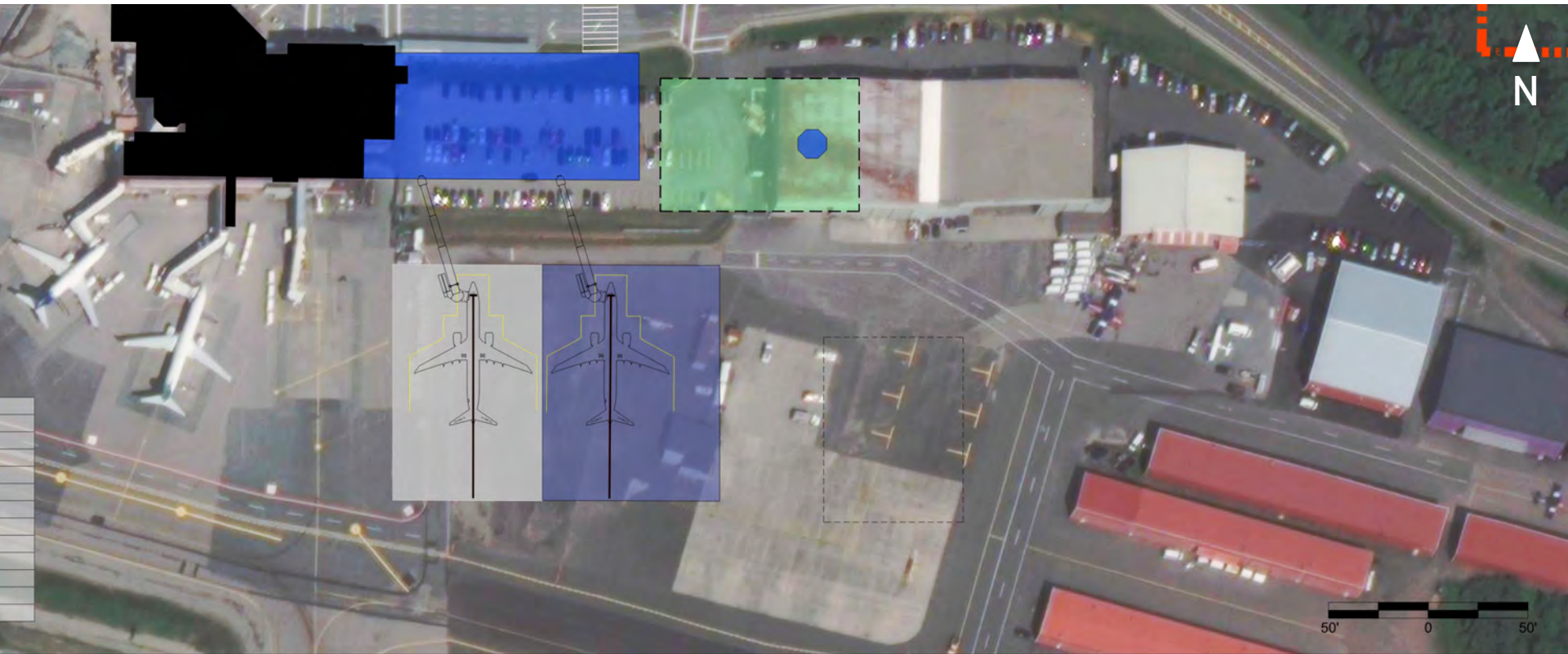


Passenger Terminal Expansion Construction



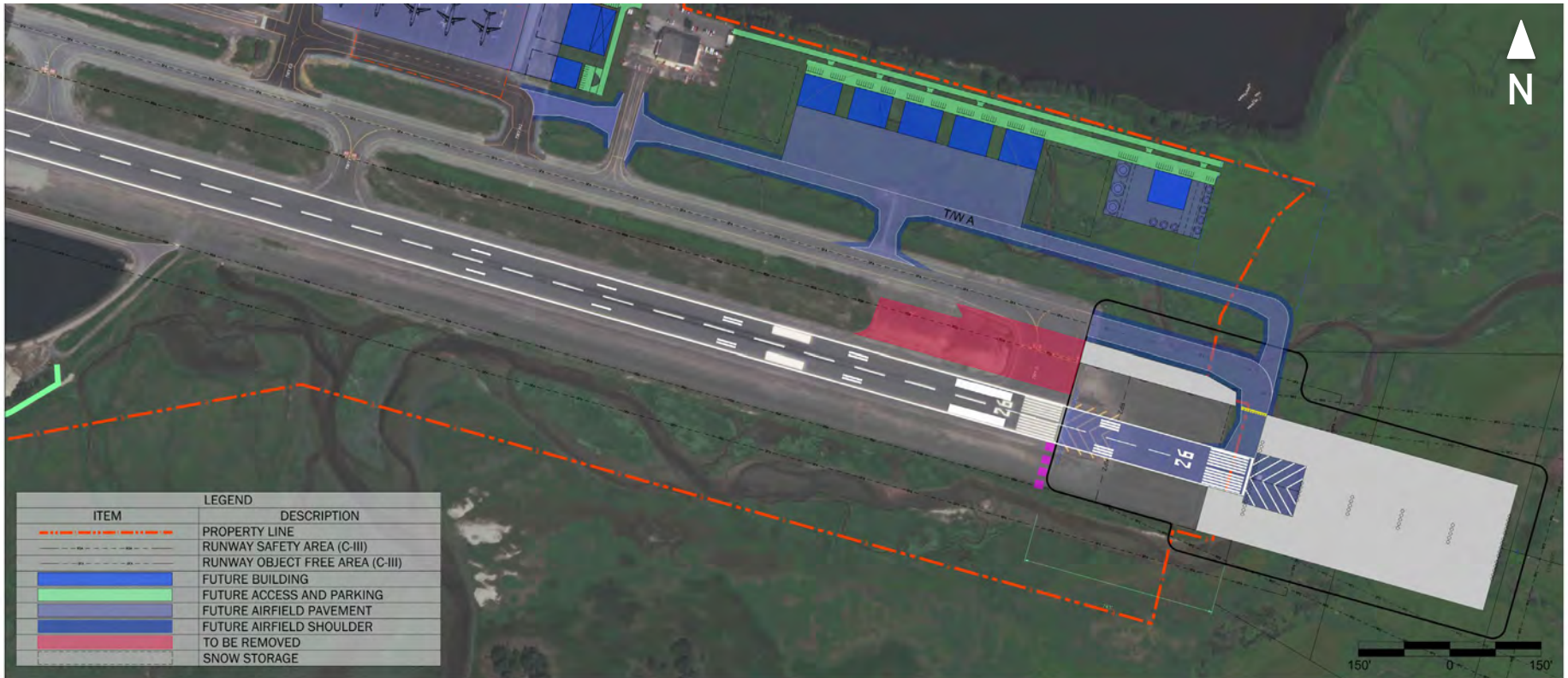


Relocate/Reconstruct FAA Air Traffic Control Tower





Runway Shift/Extension





Next Steps



- ALP Update – Finalizing Draft
- Publish Master Plan – tentatively June 1, 2026



Questions...

