

Safe Streets for All Public Workshop

Public Meetings, March 16–18, 2026

Mon. March 16

5:00–7:00pm

Dzantik'i Heeni School

Commons

1600 Renninger Street

Tues. March 17

5:00–7:00pm

City Hall

Assembly Chambers

155 Heritage Way

Weds. March 18

5:00–7:00pm

**Mendenhall Valley
Public Library**

Large Meeting Room
3025 Diamond Pk Lp

Welcome!

- We are so happy you joined us to learn more about the Safe Streets for All (SS4A) plan!

- What to expect:
 - Quick presentation
 - Opportunities for input
 - Questions
 - Light refreshments and snack

Project Team



Action Plan Committee Members

Jeffrey Thole, CBJ Engineering Project Manager

Carleton Shorey, CBJ Engineering Project Manager

Suzanne Crabtree, CBJ Utility Billing

Andrew Pantiskas, CBJ-CCFR EMS Program Manager

Jeff Redmond, CBJ-Capital Transit Operator

Matthew Carpenter, CBJ-Lead Transit Operator

Project Purpose



Comprehensive Safety Action Plan for CBJ

- Identifies safety problems and solutions
- Engages the public
- Leveraged for transportation safety project funding



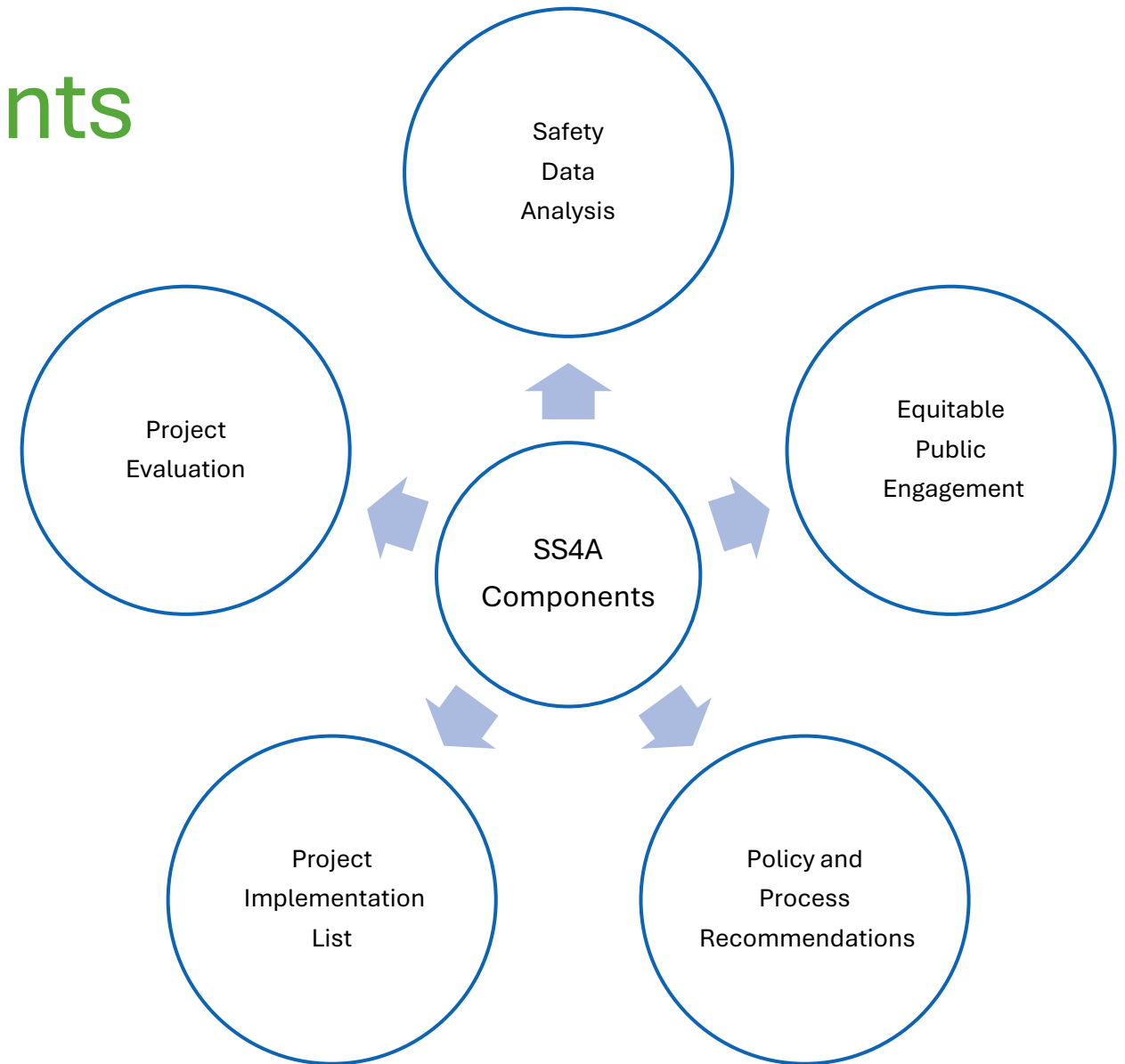
Advance Goal of Zero Roadway Deaths

- “...the City and Borough of Juneau Assembly is committed to taking actions large and small to ensure our roadways are safe for all users including pedestrians, bicyclists, users of public transportation, motorists, and commercial vehicle operators.”

SS4SA Plan Components

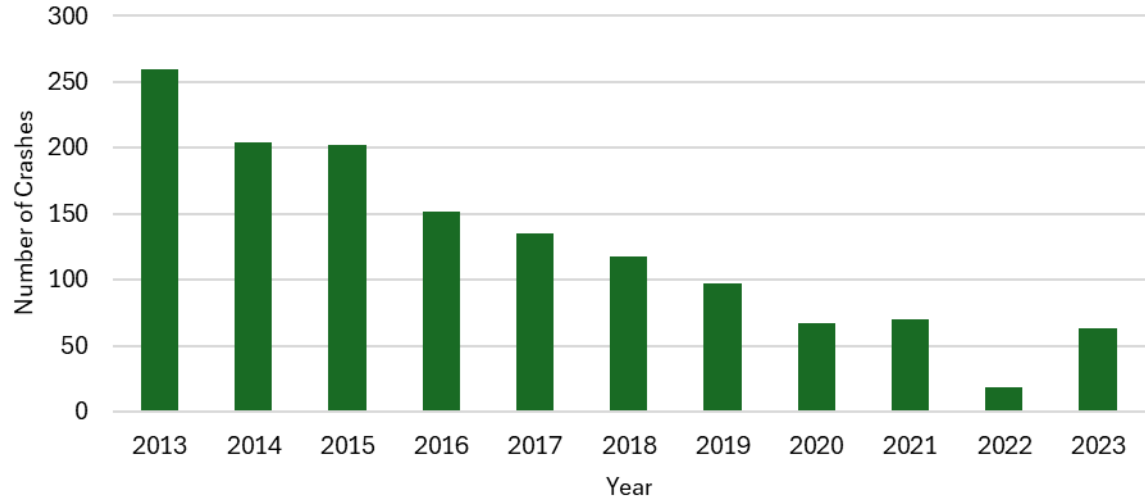
With support from CBJ Leadership and the Action Plan Committee, the SS4A plan will focus on:

1. Analyzing current data
2. Engaging the public
3. Reviewing existing plans and policies
4. Developing a prioritized list of projects for implementation
5. Measuring progress over time

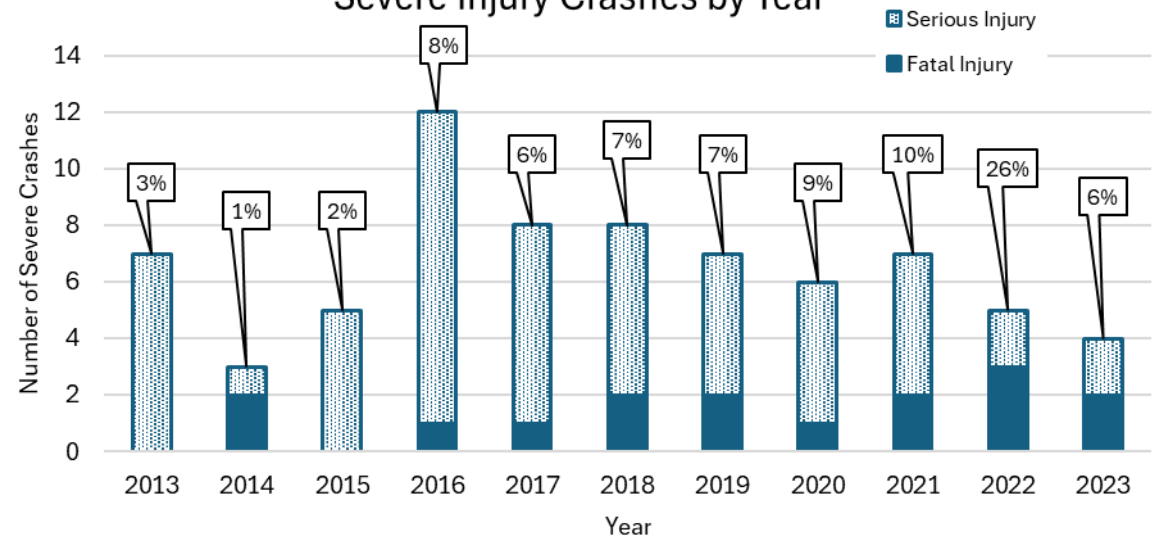


CBJ Crash Data

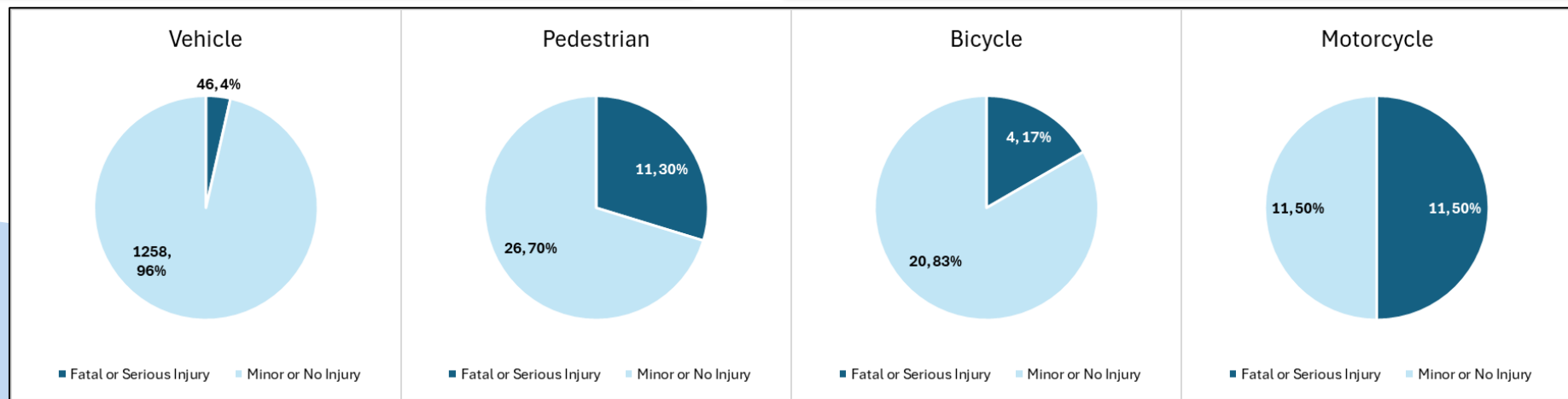
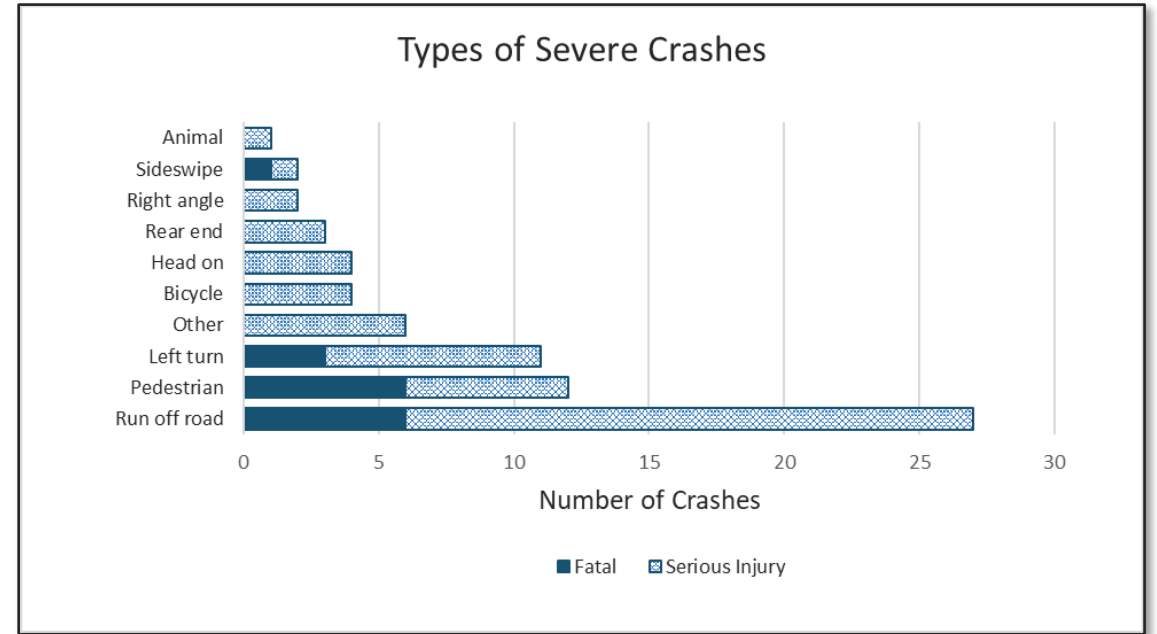
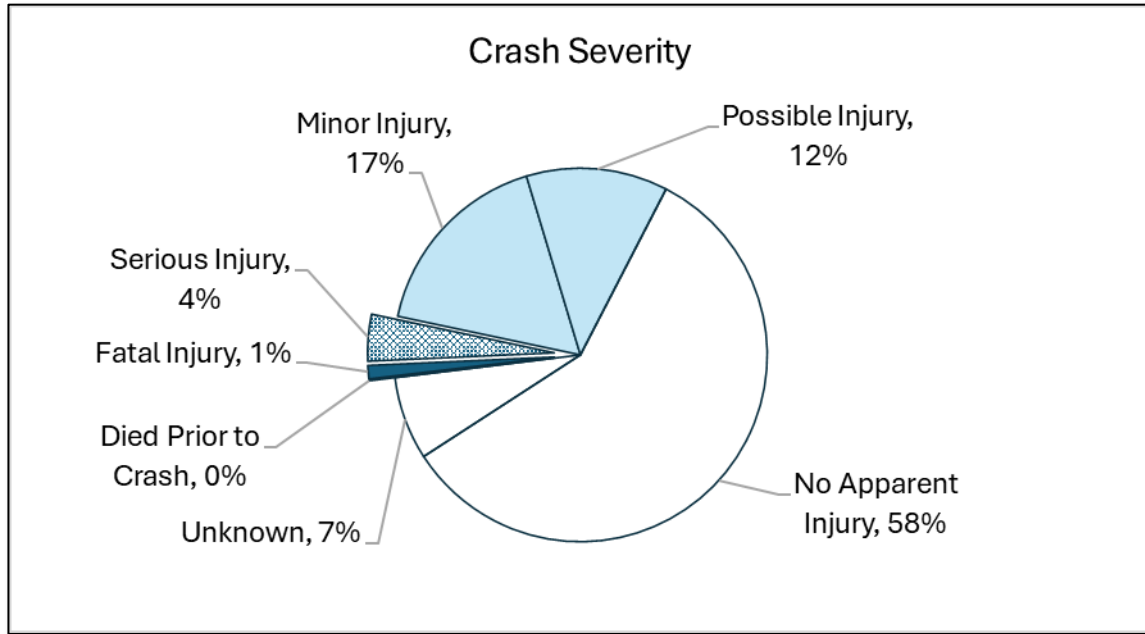
Crashes by Year



Severe Injury Crashes by Year



CBJ Crash Data (2013 to 2023)



High Severity Crash Types

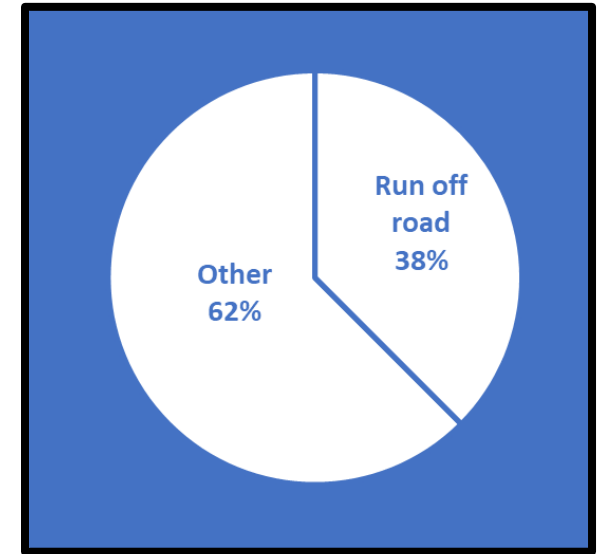
Run Off Road Crashes (27 severe)

Primary Factors

- Driver impairment (74%)
- No lighting (67%)
- Speed limit > 50 mph (60%)
- Roadside hazards (trees, boulders, cliffs)

Top Location

- Glacier Hwy North of Mendenhall Valley



Glacier Highway (Source: Google Earth)

Run Off Road Crash Countermeasures

- Rumble strips
- Wider edge lines
- Clear zone



Rumble strips (Source: Getty Images)



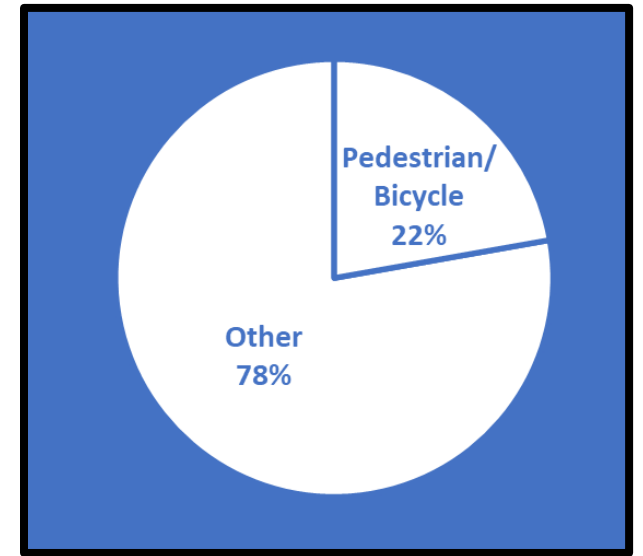
Wider (6 inch) edge lines (Source: FHA)

Pedestrian/Bicycle Crashes (16 severe)

- 4 bike crashes, 12 pedestrian crashes

Primary Factors

- Two-way stop control intersections -- one road has stop sign, other is free flowing (75%)
- Uncontrolled crosswalks (19%)
- Lack of adequate pedestrian infrastructure



*Uncontrolled crosswalk on Glacier Highway
(Source: Google Earth)*

Pedestrian Crash Countermeasures

- Pedestrian Hybrid Beacon (PHB)
- Rectangular Rapid Flashing Beacons
- High visibility crosswalks
- Lighted crosswalks
- Bike lanes



PHB above a crosswalk (Source: FHA)

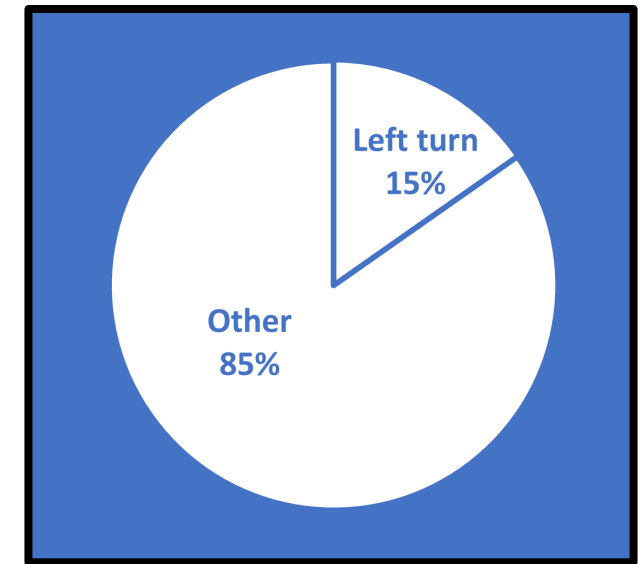
Left Turn Crashes (11 severe)

Primary Factors

- Motorcycles involved (36%)
- Two way stop controlled intersection (50%)

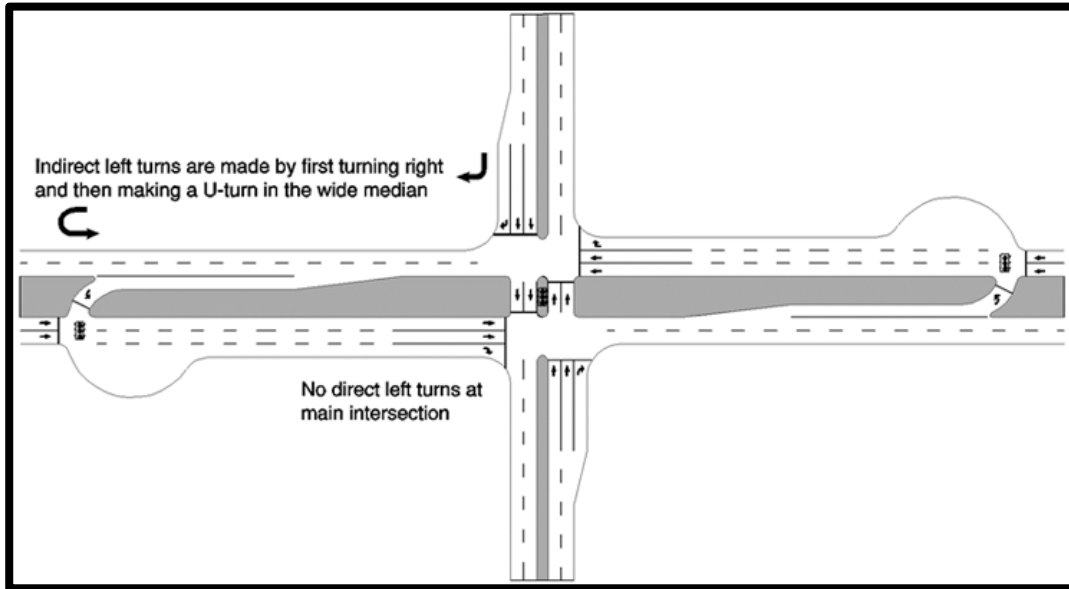
Top Locations

- Yandukin Drive & Glacier Hwy (3 crashes)



Yandukin Drive and Glacier Highway intersection (Source: Google Earth)

Left Turn Crash Countermeasures

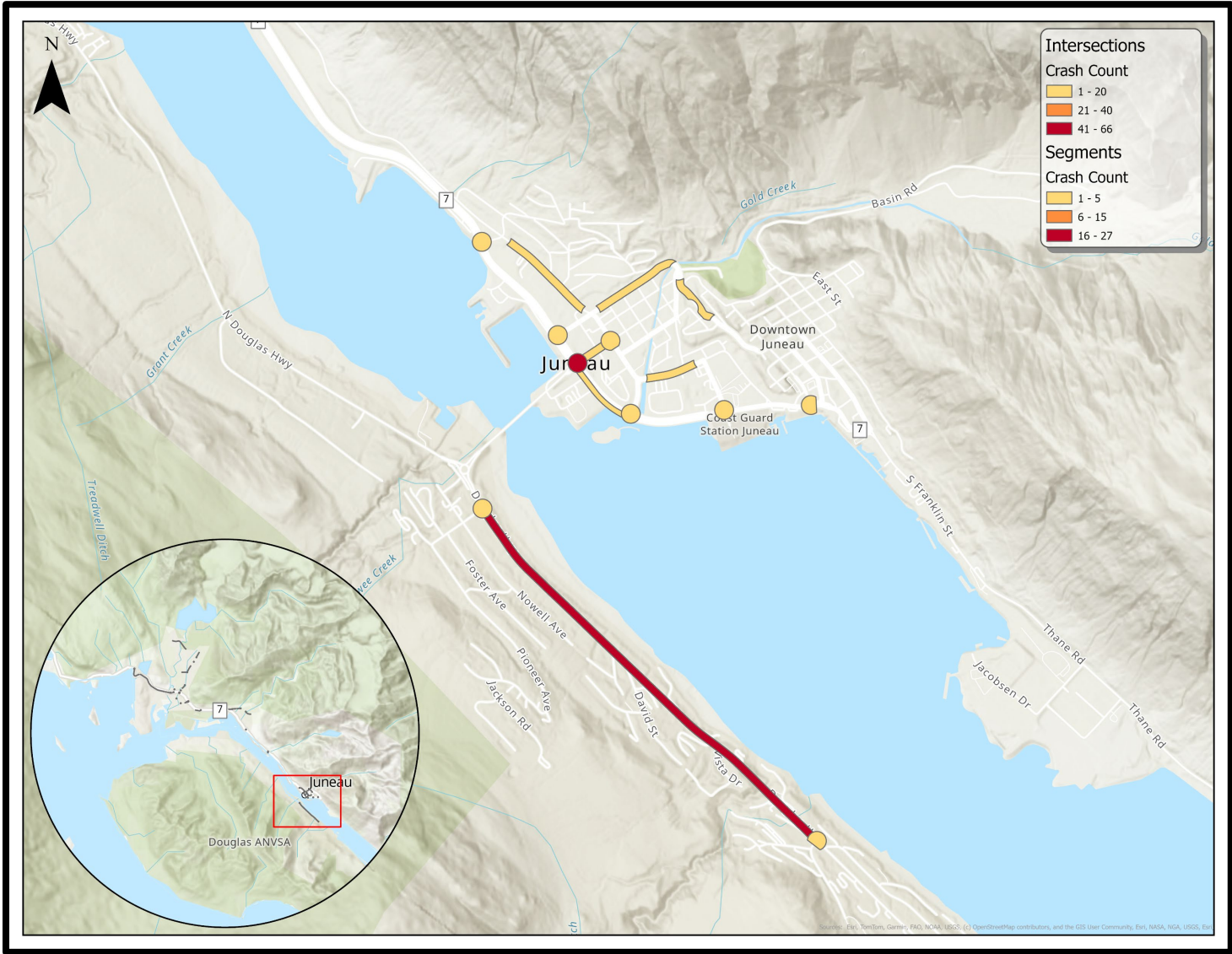


Restricted crossing U-turn diagram

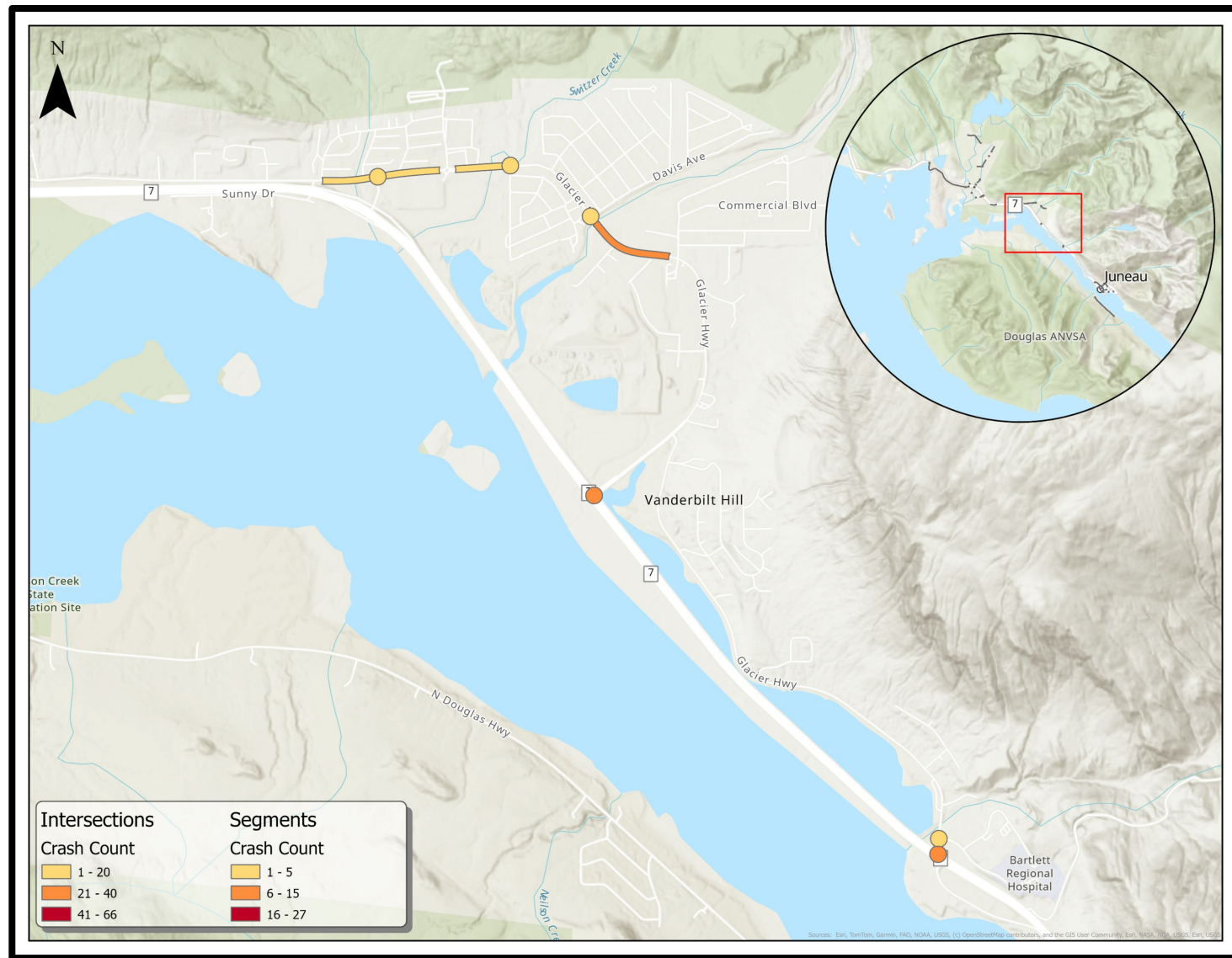
- Restricted crossing U-turn: changes left turn intersection into right turn + U-turn
- Left turn lanes

High Crash Locations

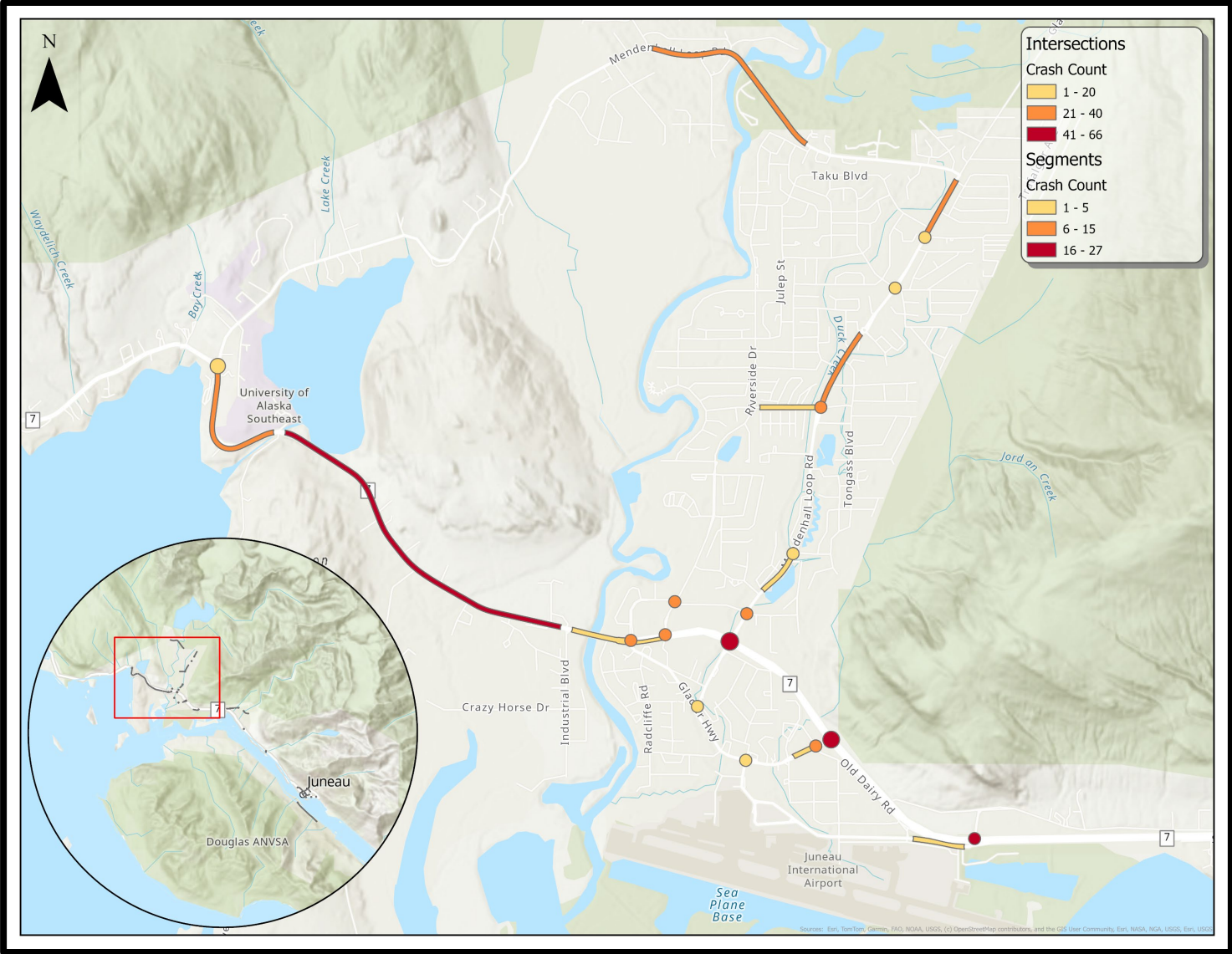
Downtown Juneau



Lemon Creek



Mendenhall Valley



Public Involvement Process

ONLINE

- Use the comment map to provide feedback
- Take the community survey
- Visit the project website

IN-PERSON

- Attend a workshop
- Review the draft plan
- Tell your story to the project team

Engagement Resources

WEBSITE



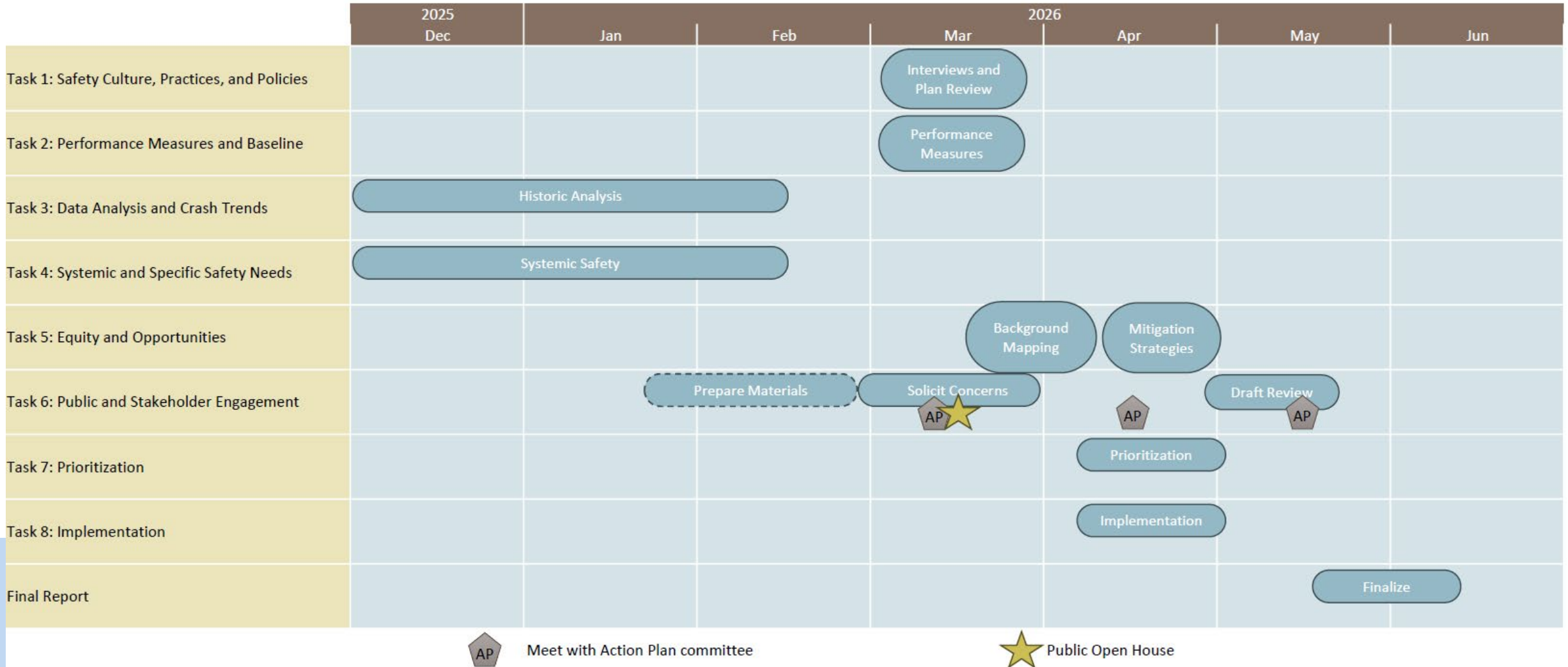
COMMENT MAP



SURVEY



Next Steps





Thank you!

Please stay in touch:

Project Contact: Jeffrey Thole, CBJ Public Works

Email: Jeffrey.thole@juneau.gov

Project Website: <https://bit.ly/CBJ-SS4A>