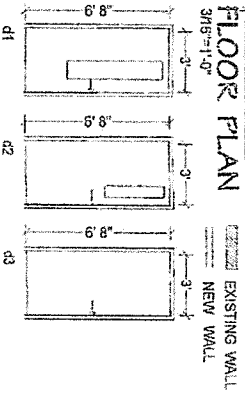
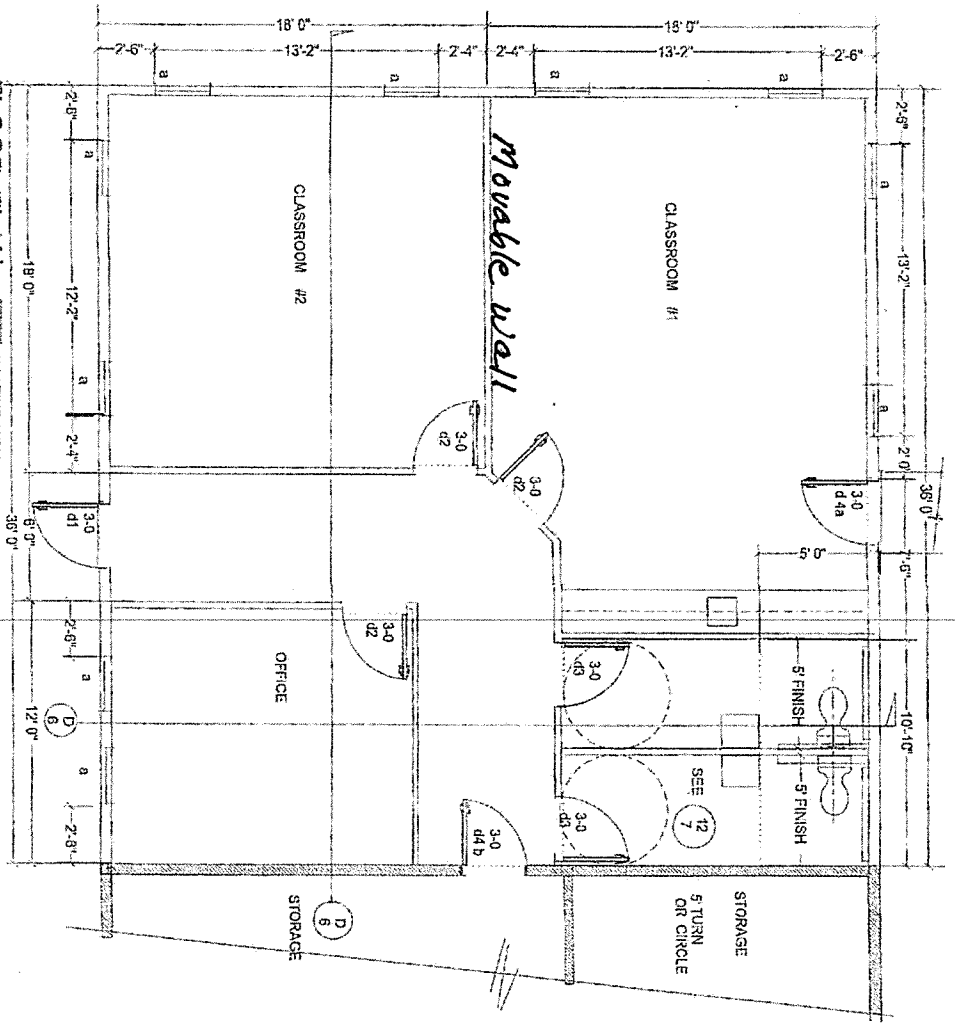


*Classrooms #1 and #2 for preschool/daycare
and shelter use either individually
or as one large room by opening movable wall*

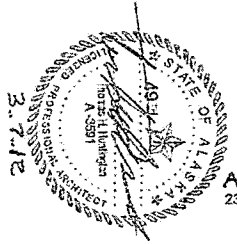


- DOOR SCHEDULE**
- d1. METAL INSL DOOR, WOOD JAMB, EXT WALL, LEVER KEY LOCK MASTER KEY, ADA, THREE-FOUR INSULATED SAFETY GLAZING, ADA CLOSER, BALL BEARING BUTTS
 - d2. SOLID CORE L. DOOR, WOOD JAMB, EXT WALL, LEVER KEY LOCK MASTER KEY WALL STOP, SAFETY GLAZING 5" X 20" VISION PANEL
 - d3. SAME AS d2, EXCEPT NO VISION PANEL, PRIVACY LEVER LOCK
 - d4a. EXISTING DOOR, RELOCATE TO CLASSROOM
 - d4b. NEW, DOOR-EXISTING OPENING, (d4a) WITH LEVER PASSAGE SET & WITH LEVER LOCK WALL STOP, SAFETY GLAZING 5" X 20"

WINDOW SCHEDULE
 A WINDOW, MATCH EXISTING ANDERSON OR APPROVED CASSEMENT, PROVIDE SCREEN, SAFETY GLASS (CODE INSULATED)

**ST. BRENDAN'S
 EPISCOPAL CHURCH
 4207 WENDANHALL LOOP ROAD
 JINEAU 769-3152**

3 of 7
 3.7.12



ABC/ THOMAS HUNTINGTON, ARCHITECT
 2314 Douglas Highway- Douglas, AK 99824-307-364-3636 & fax