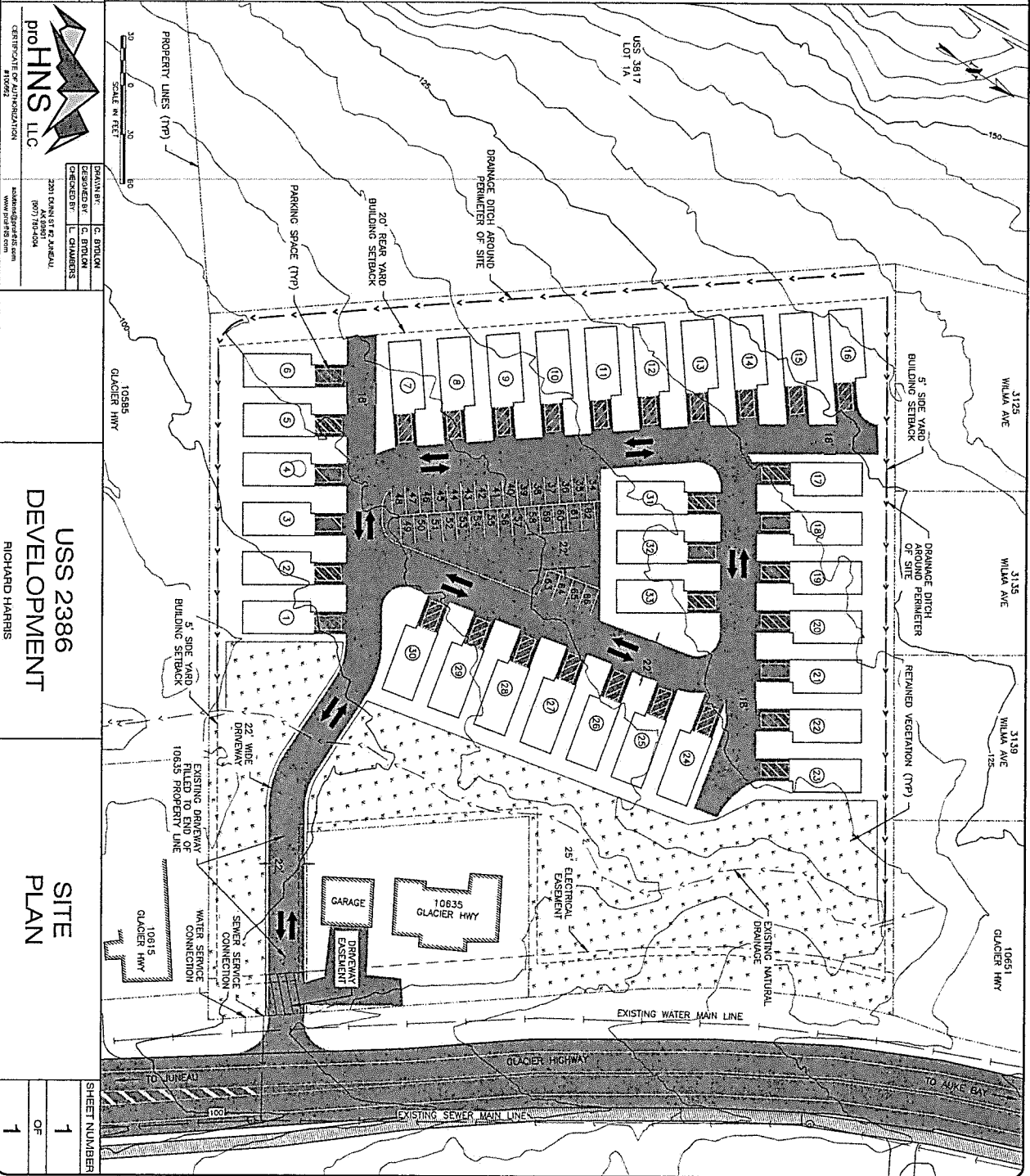


1 UNIT DETAIL
SCALE: NOT TO SCALE

- SHEET NOTES:**
1. THE PROPOSED DRIVEWAY WILL TAKE ACCESS FROM THE EXISTING DRIVEWAY AND BE LOCATED WITHIN THE EXISTING DRIVEWAY EASEMENT. APPROX. IS WITHIN AN EXISTING DRIVEWAY EASEMENT FOR MORE DETAILS ABOUT THIS EASEMENT.
 2. ALL PARKING SPACES ARE 17'x8.5'. PARKING SPACES #34-66 WILL BE GUEST PARKING DEMARKED WITH PARKING MARKINGS. PARKING SPACES #1-33 WILL BE VISITOR PARKING DEMARKED WITH VISITOR MARKINGS. PARKING SPACES #34-66 WILL NOT HAVE PARKING MARKINGS. ONE ADDITIONAL PARKING SPACE WILL BE PROVIDED INSIDE THE GARAGE OF EACH UNIT.
 3. EXISTING GROUND CONTOURS SHOWN ARE FROM CBU'S 2014 LIDAR DATA.

NO.	DATE	REVISIONS	BY



proHNS LLC
CENTRIFUGE OF AUTHORIZATION

2201 DAWN ST #2, ANCHORAGE, AK 99503
907.784.0444
www.prohns.com

DESIGNER	C. BRULIN
REVISOR	C. BRULIN
CHECKED BY	L. CHAMBERS

USS 2386 DEVELOPMENT
RICHARD HARRIS

SITE PLAN

1 OF 1
SHEET NUMBER