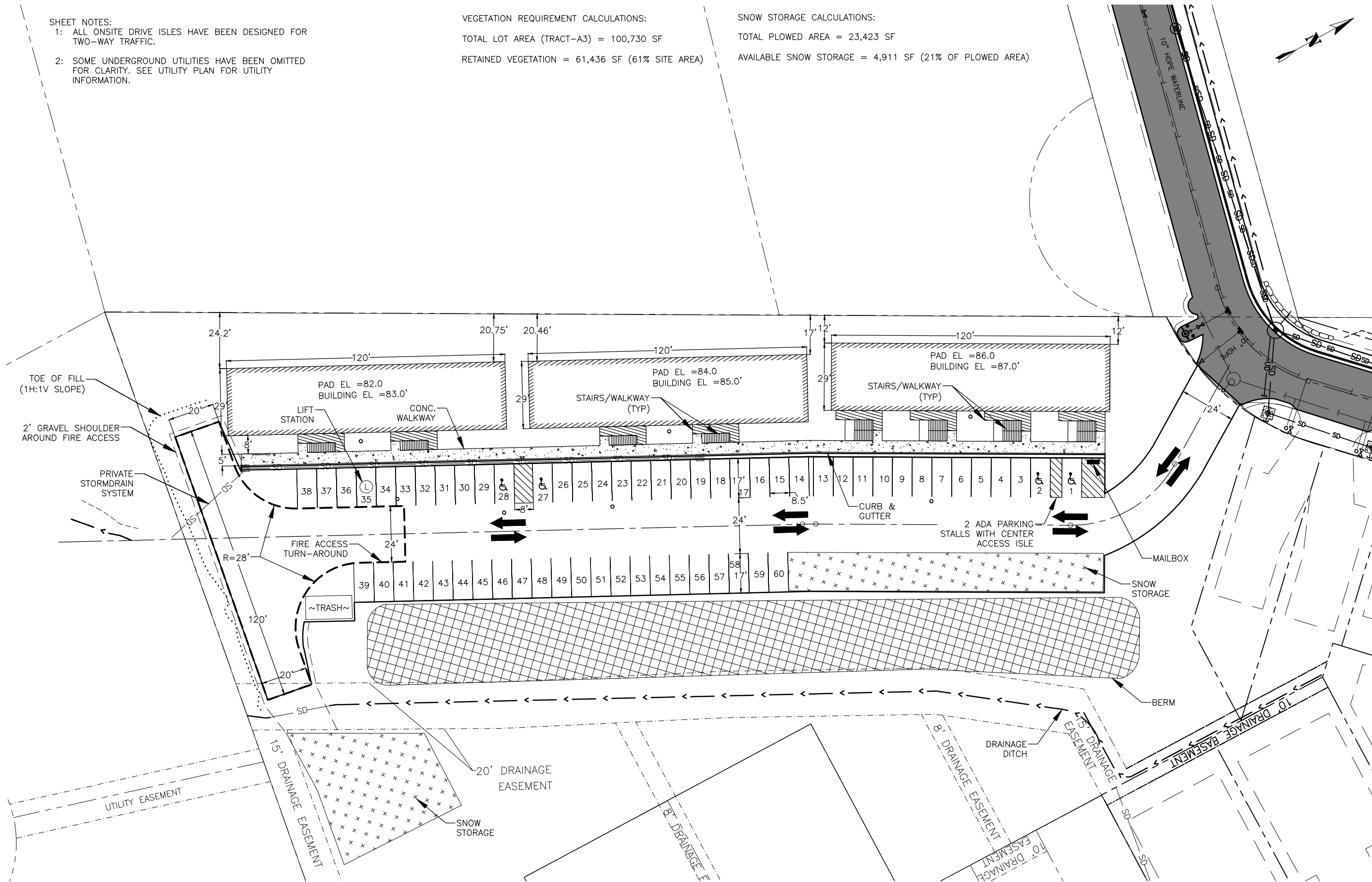
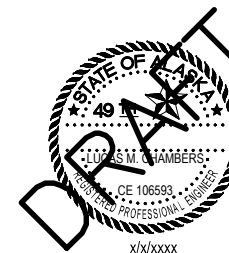


SHEET NOTES:  
 1: ALL ONSITE DRIVE ISLES HAVE BEEN DESIGNED FOR TWO-WAY TRAFFIC.  
 2: SOME UNDERGROUND UTILITIES HAVE BEEN OMITTED FOR CLARITY. SEE UTILITY PLAN FOR UTILITY INFORMATION.

VEGETATION REQUIREMENT CALCULATIONS:  
 TOTAL LOT AREA (TRACT-A3) = 100,730 SF  
 RETAINED VEGETATION = 61,436 SF (61% SITE AREA)

SNOW STORAGE CALCULATIONS:  
 TOTAL PLOWED AREA = 23,423 SF  
 AVAILABLE SNOW STORAGE = 4,911 SF (21% OF PLOWED AREA)



IF THE ABOVE DIMENSION DOES NOT MEASURE ONE INCH (1") EXACTLY, THIS DRAWING WILL HAVE BEEN ENLARGED OR REDUCED, AFFECTING ALL LABEL SCALES.

**CHILKAT VISTAS HOUSING**

JUNEAU, ALASKA

SHEET TITLE:  
 SITE PLAN

CHECKED	L. CHAMBERS
DRAWN	C. BYDLON
issue	date description

SHEET # C0.0

ISSUE DATE 8/8/2024