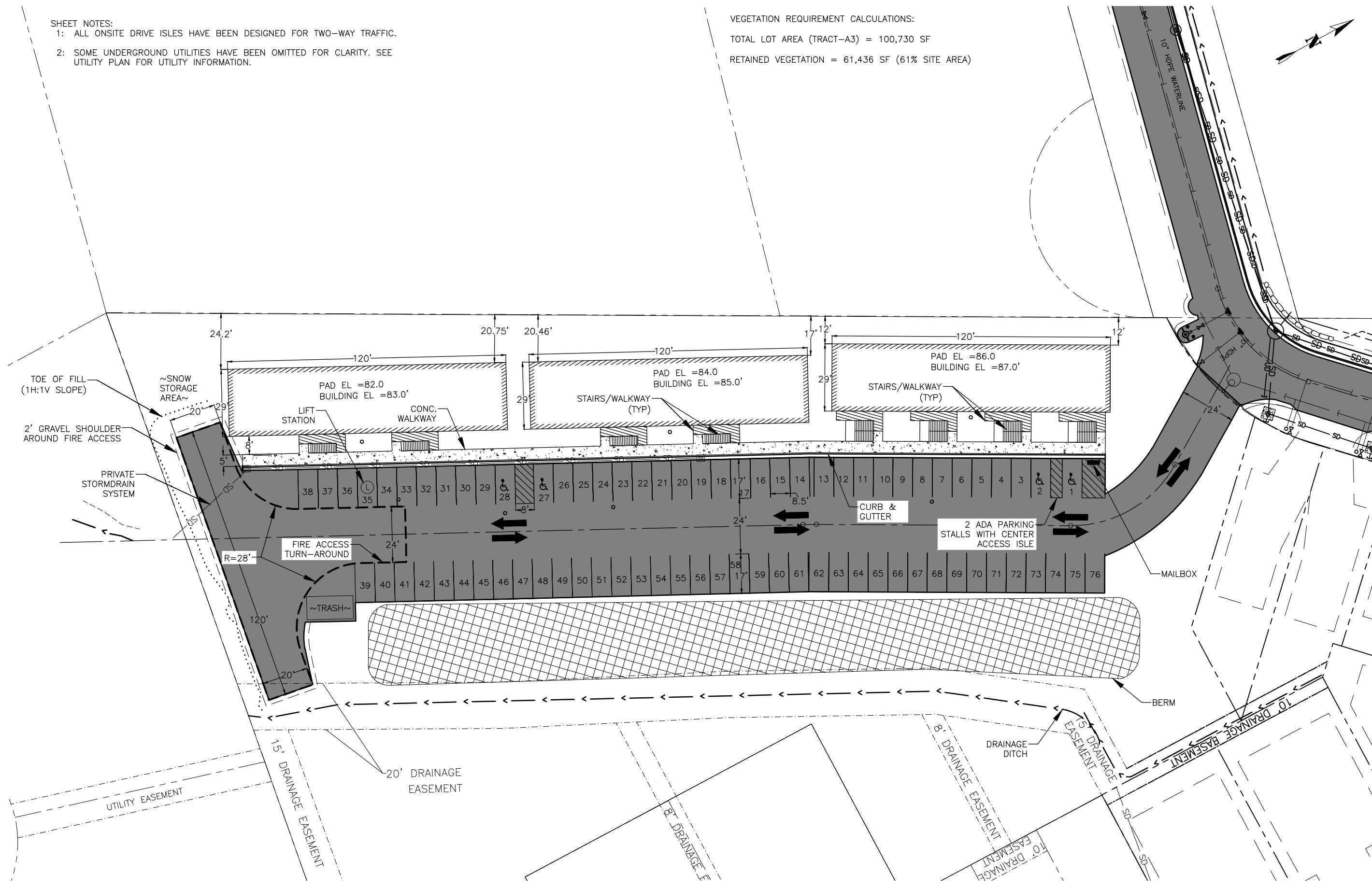
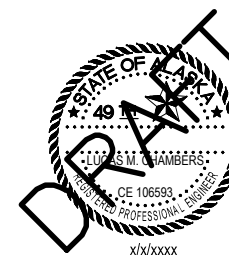


SHEET NOTES:
 1: ALL ONSITE DRIVE ISLES HAVE BEEN DESIGNED FOR TWO-WAY TRAFFIC.
 2: SOME UNDERGROUND UTILITIES HAVE BEEN OMITTED FOR CLARITY. SEE UTILITY PLAN FOR UTILITY INFORMATION.

VEGETATION REQUIREMENT CALCULATIONS:
 TOTAL LOT AREA (TRACT-A3) = 100,730 SF
 RETAINED VEGETATION = 61,436 SF (61% SITE AREA)



1"=ACTUAL
 IF THE ABOVE DIMENSION DOES NOT MEASURE ONE INCH (1") EXACTLY, THIS DRAWING WILL HAVE BEEN ENLARGED OR REDUCED, AFFECTING ALL LABEL SCALES.

CHILKAT VISTAS HOUSING

JUNEAU, ALASKA

SHEET TITLE:
SITE PLAN

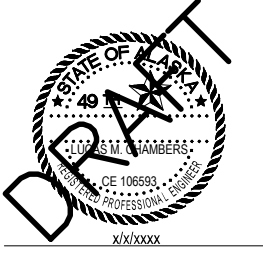
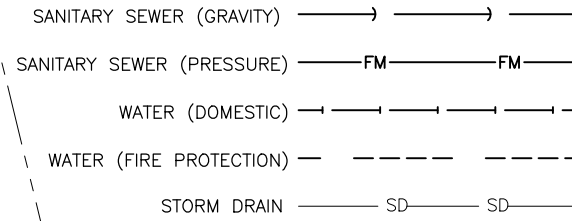
CHECKED	L. CHAMBERS
DRAWN	C. BYDLON
issue	date description

SHEET # **C0.0**

ISSUE DATE 8/8/2024

SHEET NOTES:
 1: ENERGY DISSIPATION DEVICES SHALL BE SIZED PER THE CBJ MANUAL OF STORMWATER BEST MANAGEMENT PRACTICES.

PIPE LEGEND



IF THE ABOVE DIMENSION DOES NOT MEASURE ONE INCH (1") EXACTLY, THIS DRAWING WILL HAVE BEEN ENLARGED OR REDUCED, AFFECTING ALL LABEL SCALES.

CHILKAT VISTAS HOUSING

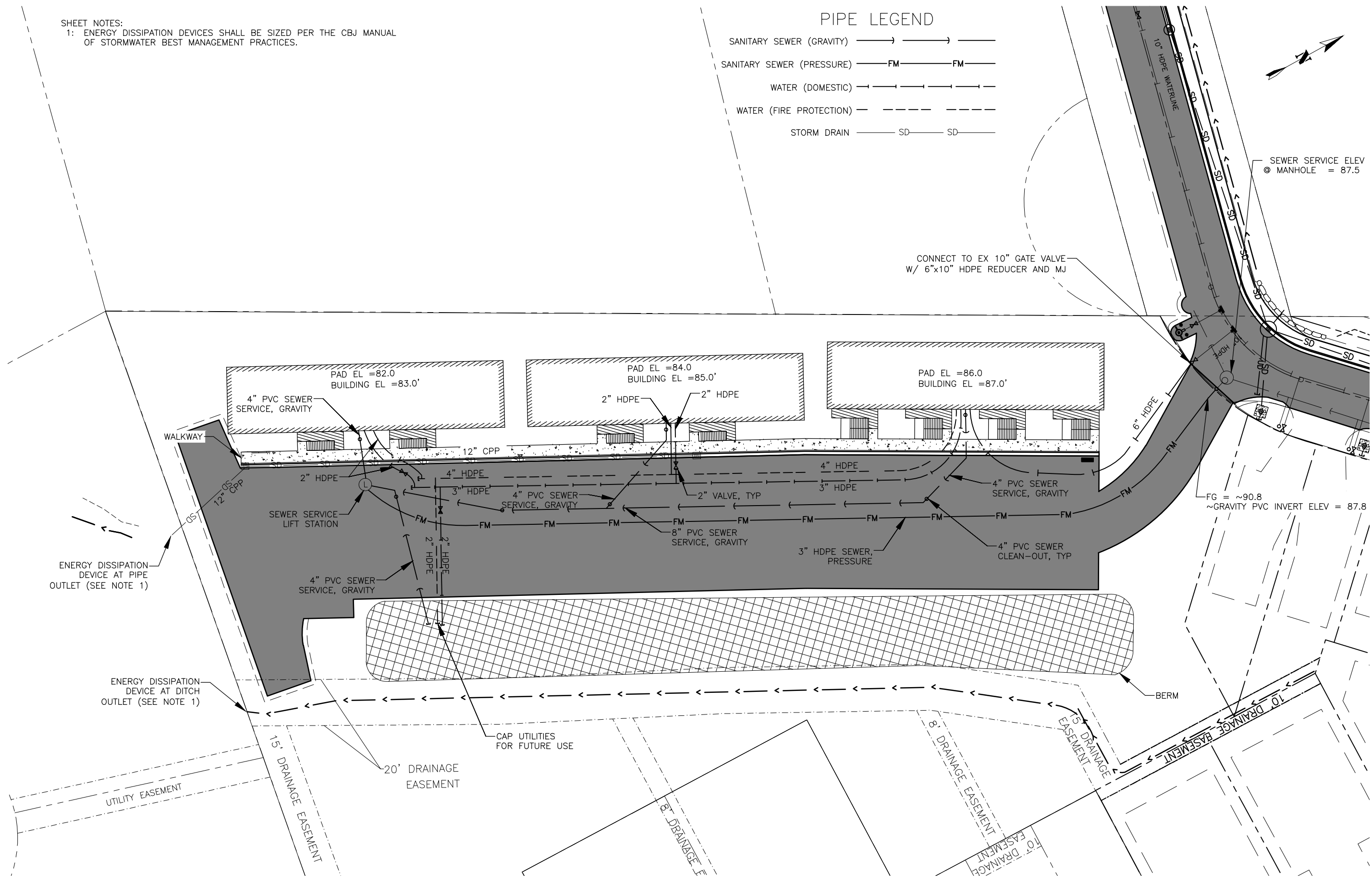
JUNEAU, ALASKA

SHEET TITLE:
 UTILITY PLAN

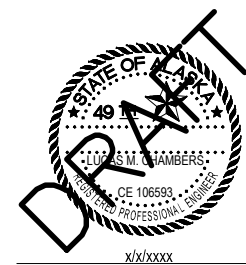
CHECKED	L. CHAMBERS
DRAWN	C. BYDLON
issue	date description

SHEET # C1.0

ISSUE DATE 8/8/2024

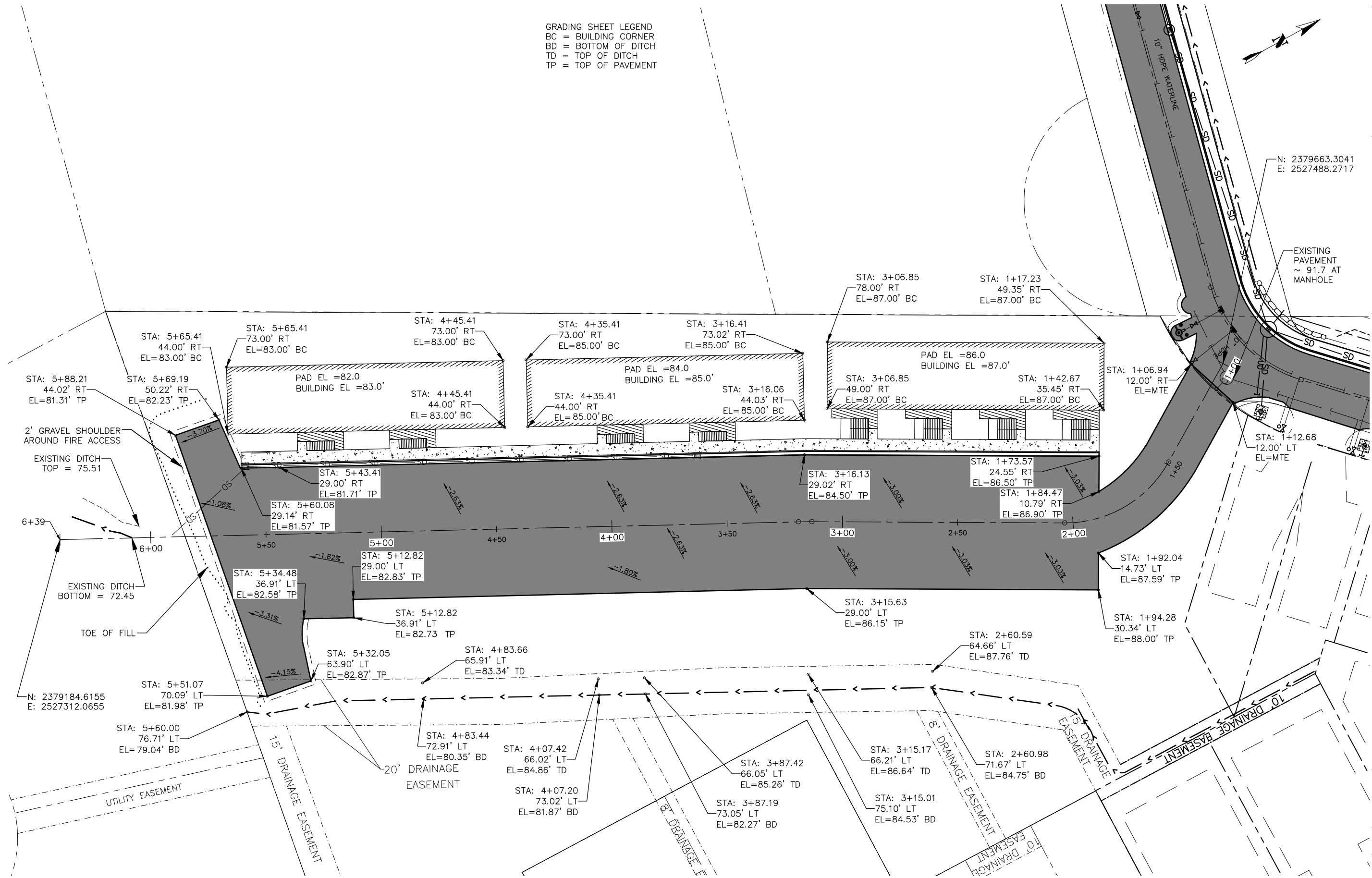


GRADING SHEET LEGEND
 BC = BUILDING CORNER
 BD = BOTTOM OF DITCH
 TD = TOP OF DITCH
 TP = TOP OF PAVEMENT



N: 2379663.3041
 E: 2527488.2717

IF THE ABOVE DIMENSION DOES NOT MEASURE ONE INCH (1") EXACTLY, THIS DRAWING WILL HAVE BEEN ENLARGED OR REDUCED, AFFECTING ALL LABEL SCALES.



CHILKAT VISTAS HOUSING

JUNEAU, ALASKA

SHEET TITLE:
GRADING PLAN

CHECKED L. CHAMBERS
 DRAWN C. BYDLON

issue date description

SHEET # **C2.0**

ISSUE DATE 8/8/2024