

JUNEAU WASTE 101



WHERE DO I...

**WHO DOES
WHAT?**

**WHO'S IN
CHARGE?**

CAPITAL DISPOSAL LANDFILL



OWNED & OPERATED BY



WASTE MANAGEMENT, INC



REGULATED BY



STATE - ADEC



FEDERALLY - EPA



**Environmental
matters are
regulated;**

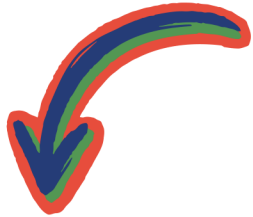
**Landfill prices
are not**

WASTE HAULING



OWNED & OPERATED BY

Alaska Waste



**Oversight
from the
Regulatory
Authority of
Alaska (RCA)**



**Rates are
regulated by
the State**

WHAT ABOUT CBJ?

WHAT ARE THEY ALLOWED TO DO WITH TRASH?



DIVERT MATERIALS



CONTRACT FOR SERVICES



HAUL RECYCLING



TELL THE LANDFILL WHAT TO DO



HAUL WASTE



CBJ PROGRAMS



**RECYCLING
DROP-OFF**

**CONTRACTED
THROUGH
WWM**



**HOUSEHOLD
HAZARDOUS
WASTE (HHW)**

**CONTRACTED
THROUGH
CleanHarbors®**



FOR-PROFIT PROGRAMS



**CURBSIDE
COMINGLED
RECYCLING**



**CURBSIDE & DROP-OFF
COMPOSTING**

**SKOOKUM
RECYCLING**



SCRAP METAL

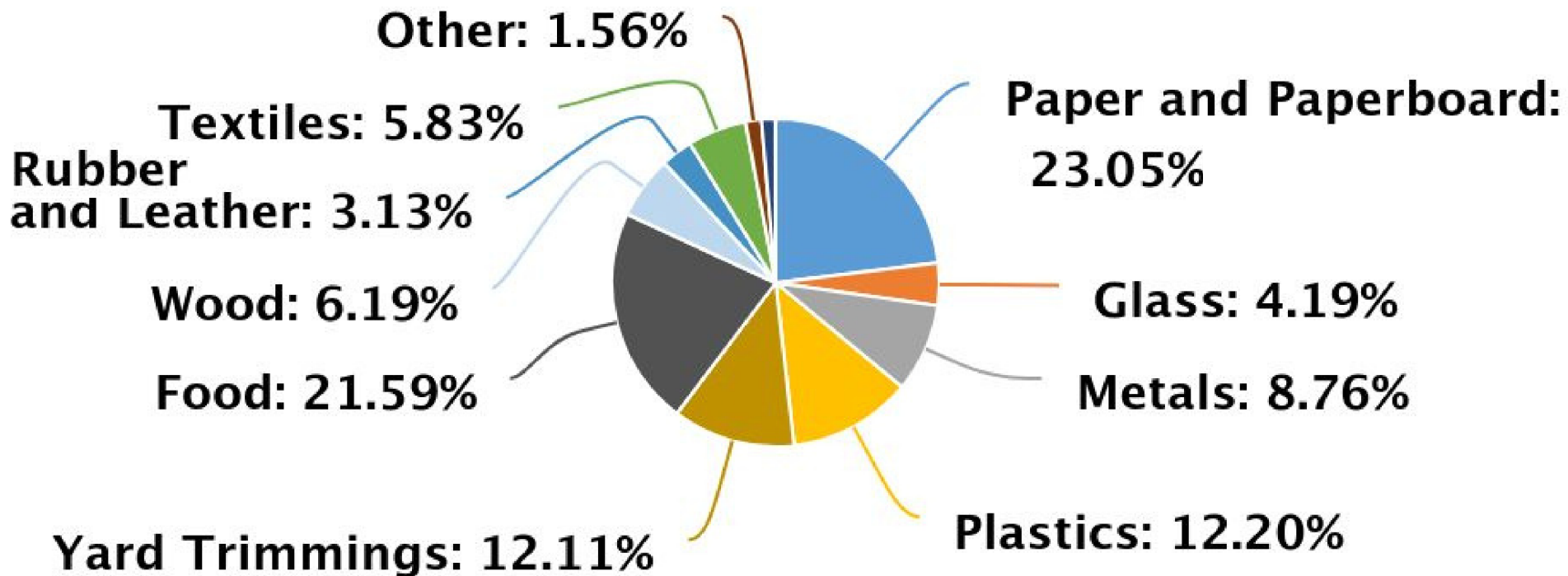
D&S RECYCLING



**LARGE BATTERIES &
NON-FERROUS METALS**

National Total MSW Generated by Material, 2018

292.4 million tons



Source: EPA

JUNEAU WASTE NUMBERS

In 2022, Juneau landfilled:

- 24,750 tons of municipal solid waste (MSW)
- 4,138 tons of construction and demolition waste (C&D)

In 2022, CBJ diverted:

- ~1,185 tons of recyclables (~5% of waste stream)
- ~355 tons of HHW (<2% of waste stream)

In 2022, Juneau Composts! diverted:

- ~250 tons of food waste (<2% of waste stream)

JUNEAU'S WASTE FUTURE

Capitol Disposal Landfill has ~10 – 15 years of life left at our current disposal volumes.

We are faced with a big question – what will we do with our trash in the future?

SHIP OUR
WASTE
SOUTH?

NEW
LANDFILL?

INCINERATOR/
THERMAL
SOLUTION?