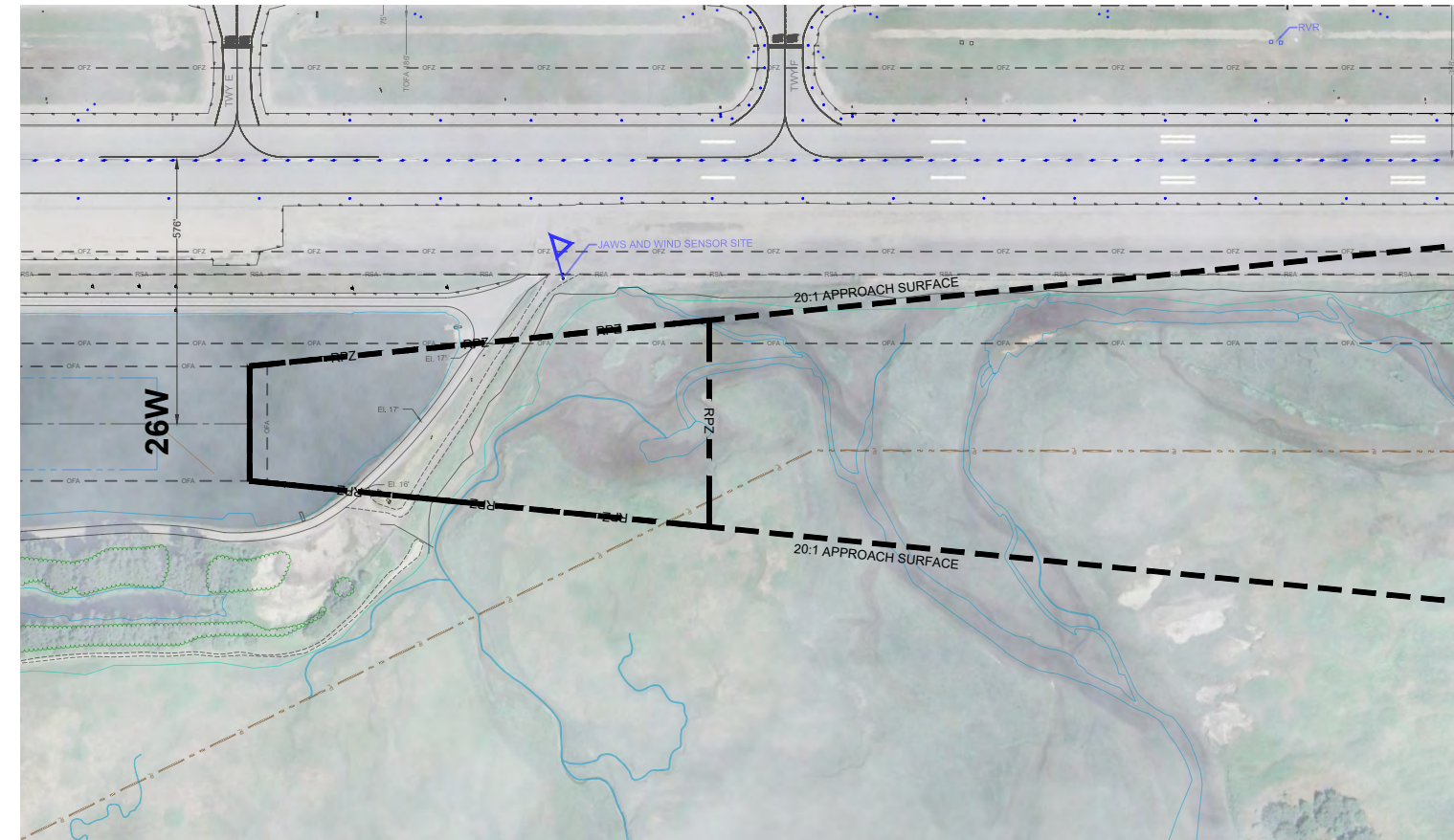
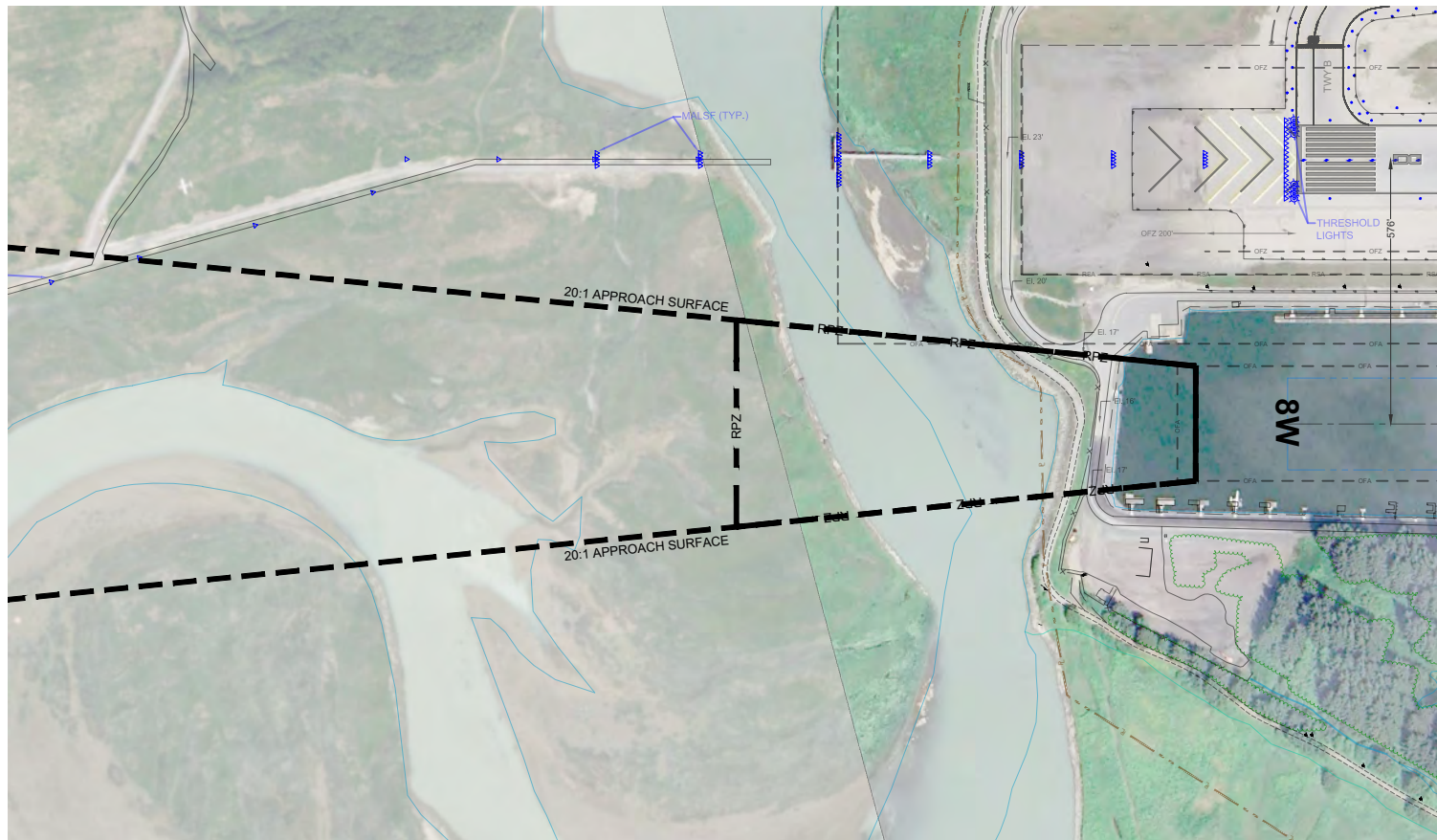
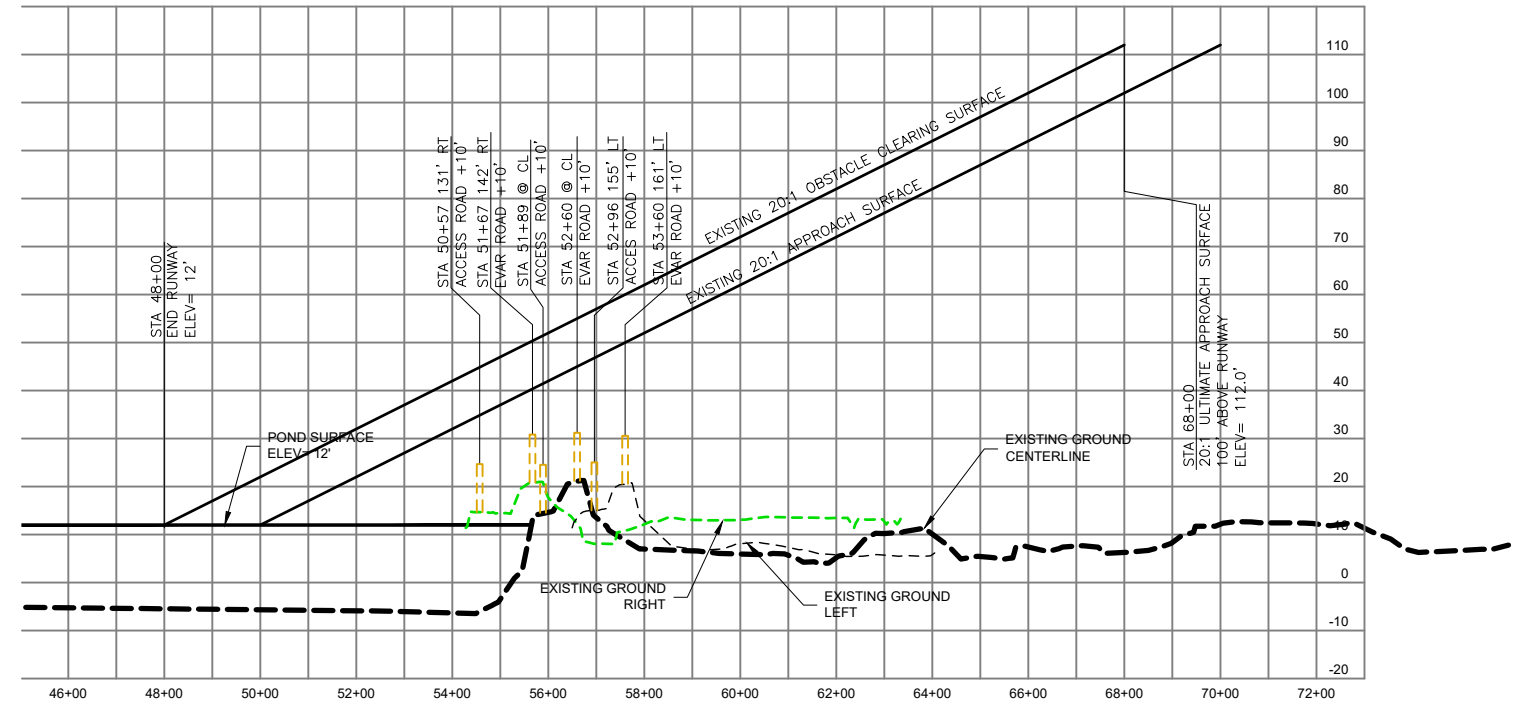
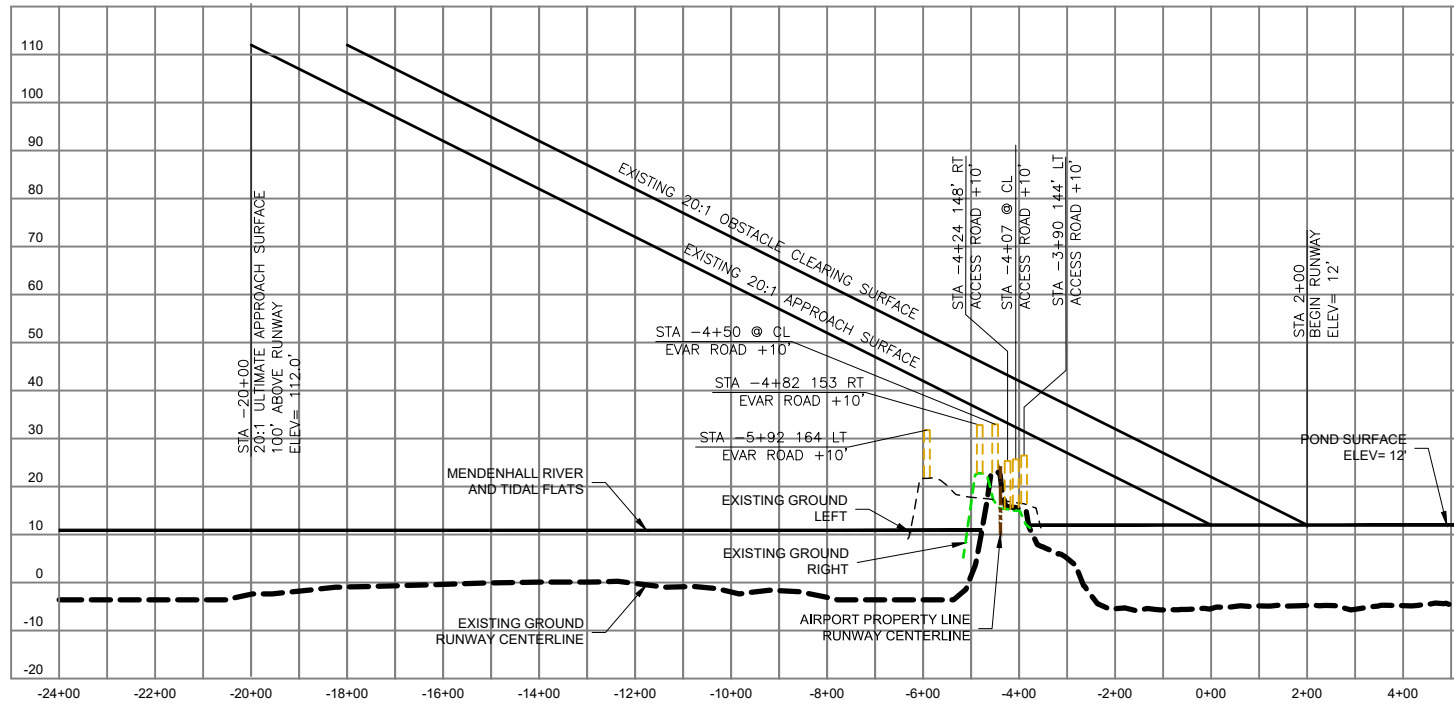


\\RED-FS\red-projects\23\15108-01\BSCAD\Aidion\ALP\ALP Drawings\JUN - Sheet 06 (Inner Approach Surface - 8W-26W).dwg PLOT DATE 2023-11-13 11:11 SAVED DATE 2023-11-13 11:08 USER



PLAN VIEW
PROFILE VIEW



NOTES

- ELEVATION IN FEET ABOVE MEAN SEA LEVEL (MSL) AT TOP OF OBJECT.
- TO CONVERT FROM NAVD88 HEIGHT TO MEAN LOWER LOW WATER (MLLW) ADD 3.72' TO THE NAVD88 HEIGHT. FOR EXAMPLE, JNUC AS LISTED IN THE SURVEY CONTROL SHEET HAS A MLLW ELEVATION OF 25.23' AND A NAVD88 HEIGHT OF 21.51'.

| RUNWAY 8W - 20:1 INNER APPROACH SURFACE OBSTRUCTIONS | | | | | | | | |
|--|-------------|-------------|--------------|--------------|---------|---------------|-------|-------------------|
| # | DESCRIPTION | SURVEY DATE | GROUND ELEV. | OBJECT ELEV. | SURFACE | SURFACE ELEV. | PNTR. | CORRECTIVE ACTION |
| - | NONE | | | | | | | |

| RUNWAY 26W - 20:1 INNER APPROACH SURFACE OBSTRUCTIONS | | | | | | | | |
|---|-------------|-------------|--------------|--------------|---------|---------------|-------|-------------------|
| # | DESCRIPTION | SURVEY DATE | GROUND ELEV. | OBJECT ELEV. | SURFACE | SURFACE ELEV. | PNTR. | CORRECTIVE ACTION |
| - | NONE | | | | | | | |

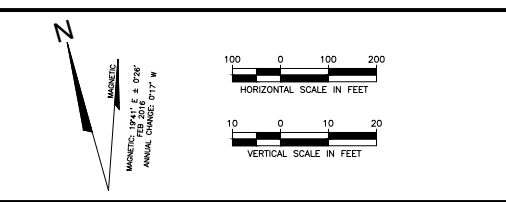
AECOM
1111 3rd AVENUE, SUITE 1600
SEATTLE, WA 98101
PHONE: 206-438-2700

PROJECT MANAGER: JJY
DESIGNED BY: RLO

DRAFTED BY: RLO
CHECKED BY: JJY

| # | REVISION | COMPANY | BY | DATE |
|---|----------------------------|---------|-----|------------|
| 1 | AS-BUILT CONDITIONS - 2023 | DOWL | BJM | 11/13/2023 |

THE PREPARATION OF THIS AIRPORT LAYOUT PLAN (ALP) WAS FINANCED IN PART THROUGH A PLANNING GRANT FROM THE FEDERAL AVIATION ADMINISTRATION (FAA) AS PROVIDED UNDER SECTION 505 OF THE AIRPORT AND AIRWAY IMPROVEMENT ACT OF 1982. THE CONTENTS DO NOT NECESSARILY REFLECT THE OFFICIAL VIEWS OR POLICIES OF THE FAA. ACCEPTANCE OF THIS ALP BY THE FAA DOES NOT IN ANY WAY CONSTITUTE A COMMITMENT ON THE PART OF THE UNITED STATES TO PARTICIPATE IN ANY DEVELOPMENT DEPICTED THEREIN NOR DOES IT IMPLY THAT THE PROPOSED DEVELOPMENT IS ENVIRONMENTALLY ACCEPTABLE IN ACCORDANCE WITH APPROPRIATE PUBLIC LAWS.



JUNEAU INTERNATIONAL AIRPORT
AIRPORT MASTER PLAN

**INNER APPROACH SURFACE
RUNWAY 8W-26W**

SCALE: VARIES
DATE: SEPTEMBER 2018

AIP NUMBER: MULTIPLE GRANTS
ASN: 2022-AAL-###-NRA
SHEET NUMBER: 6 OF 11