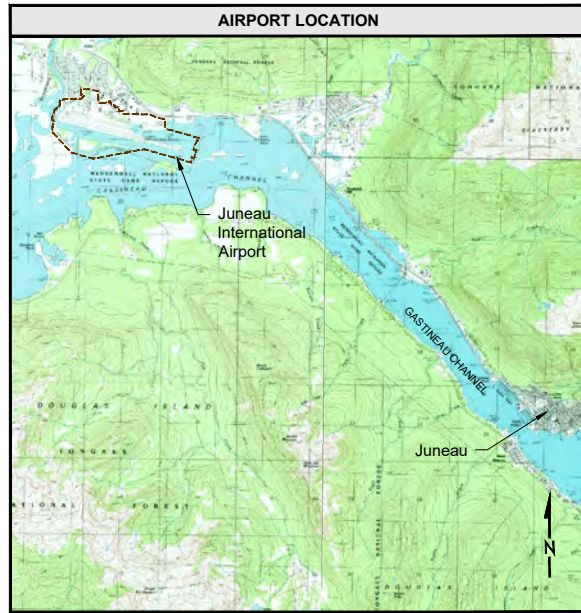
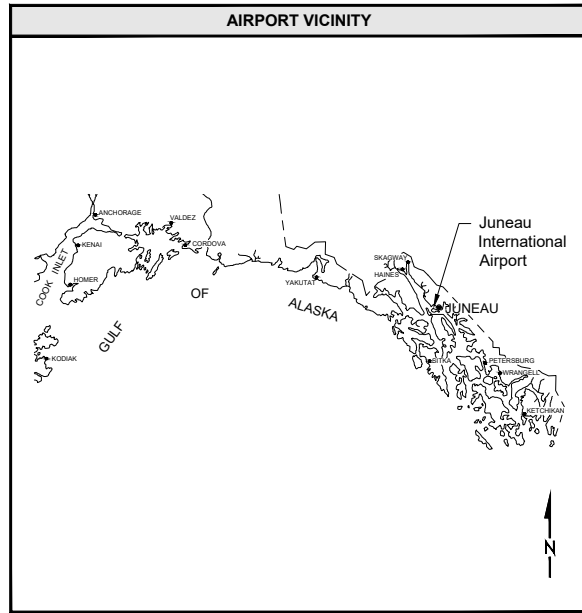


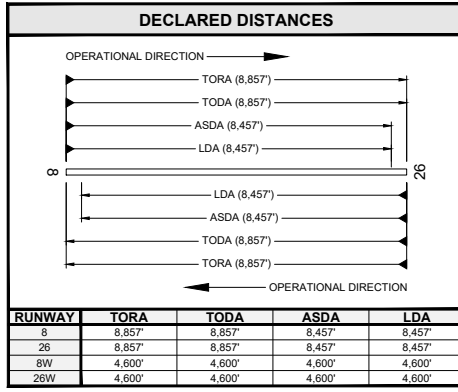
\\RED-FS\Red-projects\2315108-01\655CAD\Aviation\ALP\Drawings\JUNU - Sheet 02 (Airport Data Sheet).dwg PLOT DATE: 2023-11-13 11:54 SAVED DATE: 2023-11-13 11:53 USER: rtemplado



AIRPORT DATA TABLE with columns: ITEM, EXISTING, PROPOSED. Includes data for Airport Terminal Code (JNU), Elevation (25.3'), Reference Point (58° 21' 16.9625" N, 134° 34' 42.4939" W), etc.

MODIFICATION TO STANDARDS table with columns: DATE, AIRSPACE CASE NO., STANDARD MODIFIED, DESCRIPTION.

NON-STANDARD CONDITIONS table with columns: ITEM, STANDARD, EXISTING, ULTIMATE.

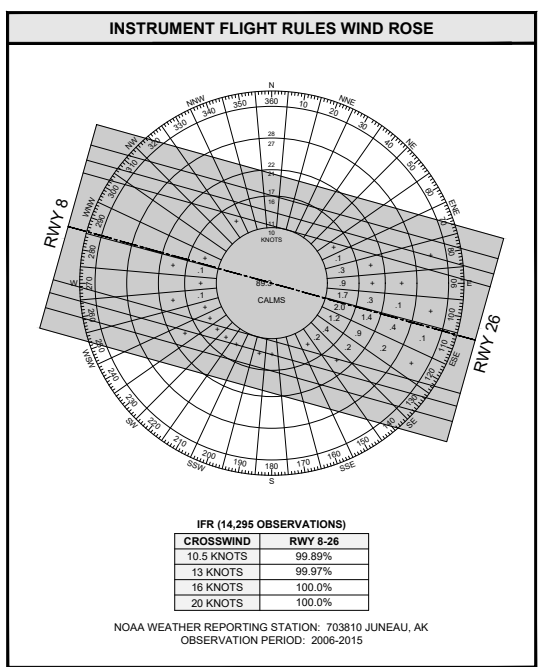
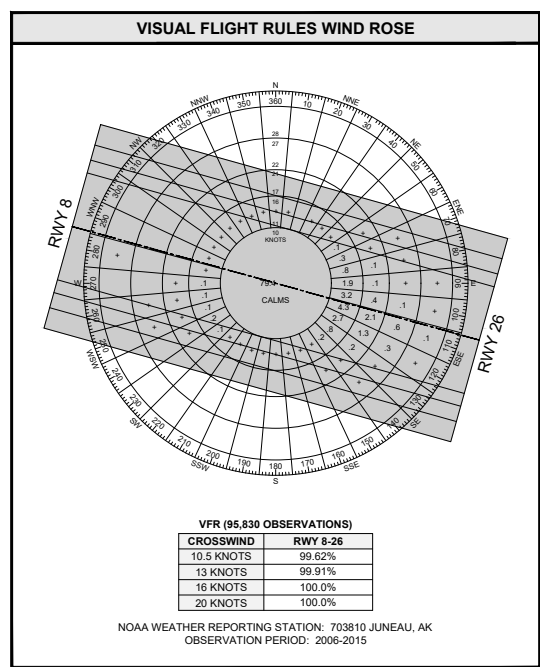
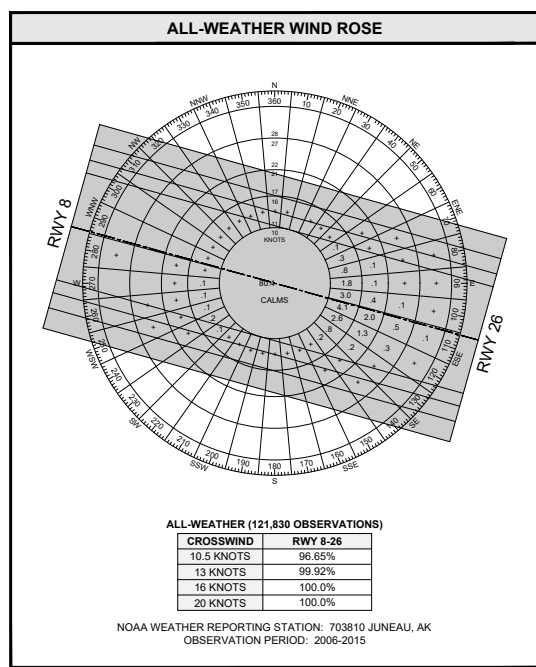


RUNWAY DATA TABLE with columns: ITEM, EXISTING, PROPOSED, EXISTING, PROPOSED. Includes data for Runway Identification, Design Code, Pavement Type, etc.

ABBREVIATIONS table with columns: ITEM, DEFINITION. Lists terms like ARFF, ARP, ASD-B, etc.

ABBREVIATIONS table with columns: ITEM, DEFINITION. Lists terms like NPI, NPIAS, NVG, etc.

TAXIWAY DATA TABLE with columns: ITEM, TAXIWAY A, TAXIWAY B, TAXIWAY B-1, TAXIWAY B-2, TAXIWAY C, etc. Includes data for taxiway widths and separations.



NOTES section containing three numbered items regarding datum, geoid heights, and NAVD88 height conversions.

APPROVAL: FEDERAL AVIATION ADMINISTRATION. Includes signature line for Jonathan Linquist, Community Planner, and a date field.

AECOM logo and contact information: 1111 3rd Avenue, Suite 1600, Seattle, WA 98101, Phone: 206-438-2700.

REVISION table with columns: #, REVISION, COMPANY, BY, DATE. Lists minor corrections and AS-BUILT conditions.

THE PREPARATION OF THIS AIRPORT LAYOUT PLAN (ALP) WAS FINANCED IN PART THROUGH A PLANNING GRANT FROM THE FEDERAL AVIATION ADMINISTRATION (FAA) AS PROVIDED UNDER SECTION 505 OF THE AIRPORT AND AIRWAY IMPROVEMENT ACT OF 1982.

APPROVAL: CITY/BOROUGH OF JUNEAU. Includes a signature line for Name / Title and a date field.



JUNEAU INTERNATIONAL AIRPORT AIRPORT MASTER PLAN. AIRPORT DATA SHEET. SCALE: DATE: SEPTEMBER 2018.

AIP NUMBER: MULTIPLE GRANTS. ASN: 2022-AAL-###-NRA. SHEET NUMBER: 2 OF 11.