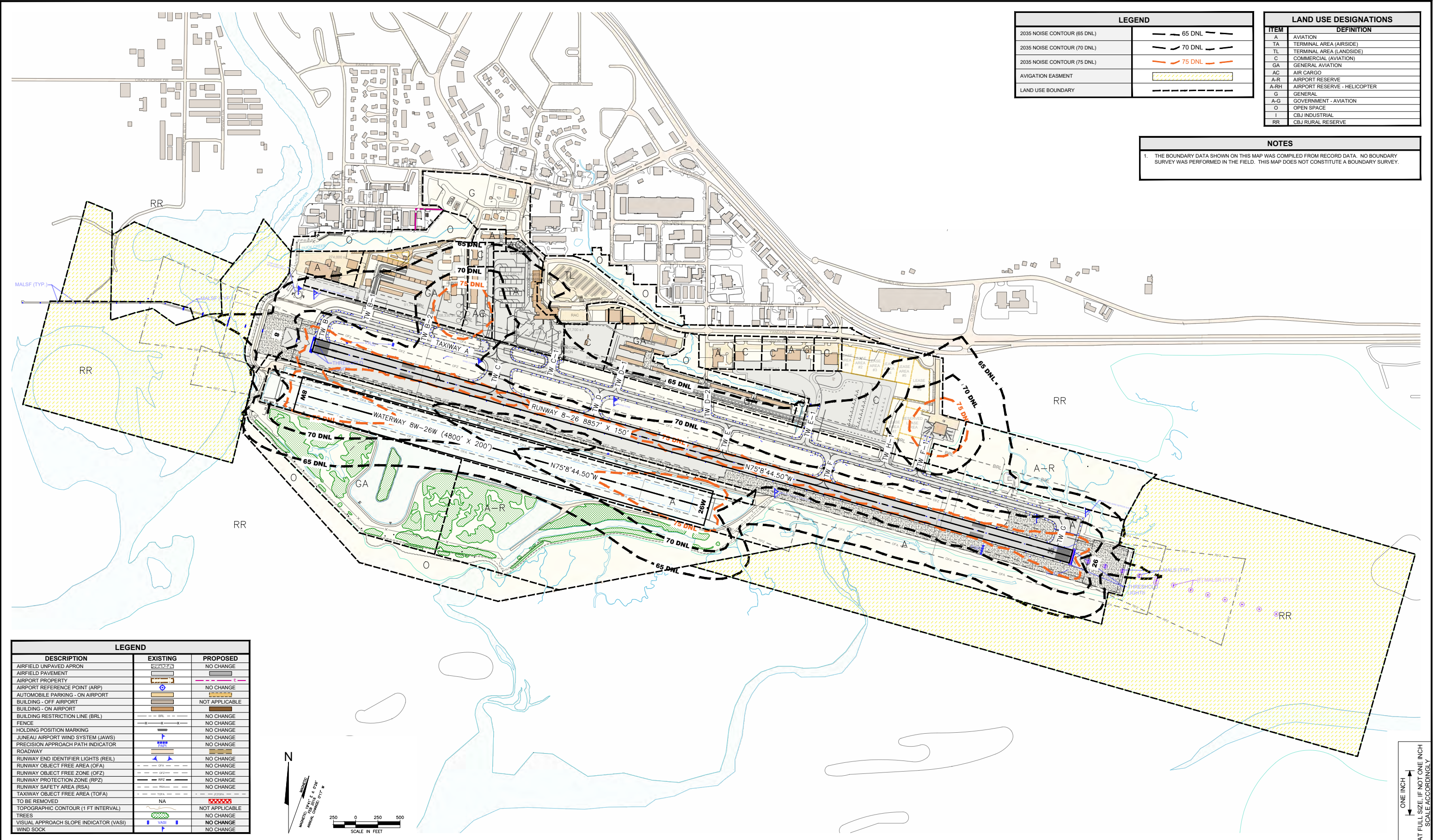


\\RED-FS\Red-projects\23\15108-01\65CAD\Aviation\ALP\ALP Drawings\JUNU - Sheet 10 (Land Use Drawing R072623.dwg PLOT DATE 2023-11-13 11:14 SAVED DATE 2023-11-13 10:50 USER: rtemplado



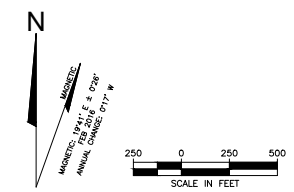
LEGEND	
2035 NOISE CONTOUR (65 DNL)	65 DNL
2035 NOISE CONTOUR (70 DNL)	70 DNL
2035 NOISE CONTOUR (75 DNL)	75 DNL
AVIGATION EASMENT	[Hatched Pattern]
LAND USE BOUNDARY	[Dashed Line]

LAND USE DESIGNATIONS	
ITEM	DEFINITION
A	AVIATION
TA	TERMINAL AREA (AIRSIDE)
TL	TERMINAL AREA (LANDSIDE)
C	COMMERCIAL (AVIATION)
GA	GENERAL AVIATION
AC	AIR CARGO
A-R	AIRPORT RESERVE
A-RH	AIRPORT RESERVE - HELICOPTER
G	GENERAL
A-G	GOVERNMENT - AVIATION
O	OPEN SPACE
I	CBJ INDUSTRIAL
RR	CBJ RURAL RESERVE

NOTES

1. THE BOUNDARY DATA SHOWN ON THIS MAP WAS COMPILED FROM RECORD DATA. NO BOUNDARY SURVEY WAS PERFORMED IN THE FIELD. THIS MAP DOES NOT CONSTITUTE A BOUNDARY SURVEY.

LEGEND		
DESCRIPTION	EXISTING	PROPOSED
AIRFIELD UNPAVED APRON	[Symbol]	NO CHANGE
AIRFIELD PAVEMENT	[Symbol]	NO CHANGE
AIRPORT PROPERTY	[Symbol]	NO CHANGE
AIRPORT REFERENCE POINT (ARP)	[Symbol]	NO CHANGE
AUTOMOBILE PARKING - ON AIRPORT	[Symbol]	NO CHANGE
BUILDING - OFF AIRPORT	[Symbol]	NOT APPLICABLE
BUILDING - ON AIRPORT	[Symbol]	NOT APPLICABLE
BUILDING RESTRICTION LINE (BRL)	[Symbol]	NO CHANGE
FENCE	[Symbol]	NO CHANGE
HOLDING POSITION MARKING	[Symbol]	NO CHANGE
JUNEAU AIRPORT WIND SYSTEM (JAWS)	[Symbol]	NO CHANGE
PRECISION APPROACH PATH INDICATOR	[Symbol]	NO CHANGE
ROADWAY	[Symbol]	NO CHANGE
RUNWAY END IDENTIFIER LIGHTS (REIL)	[Symbol]	NO CHANGE
RUNWAY OBJECT FREE AREA (OFA)	[Symbol]	NO CHANGE
RUNWAY OBJECT FREE ZONE (OFZ)	[Symbol]	NO CHANGE
RUNWAY PROTECTION ZONE (RPZ)	[Symbol]	NO CHANGE
RUNWAY SAFETY AREA (RSA)	[Symbol]	NO CHANGE
TAXIWAY OBJECT FREE AREA (TOFA)	[Symbol]	NO CHANGE
TO BE REMOVED	NA	[Symbol]
TOPOGRAPHIC CONTOUR (1 FT INTERVAL)	[Symbol]	NOT APPLICABLE
TREES	[Symbol]	NO CHANGE
VISUAL APPROACH SLOPE INDICATOR (VASI)	[Symbol]	NO CHANGE
WIND SOCK	[Symbol]	NO CHANGE



ONE INCH
AT FULL SIZE. IF NOT ONE INCH
SCALE ACCORDINGLY

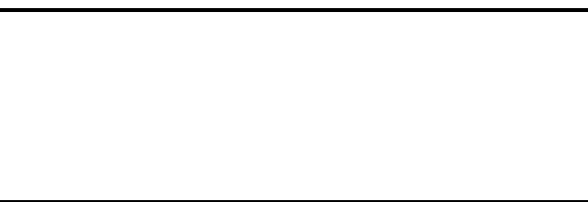
AECOM
1111 3rd AVENUE, SUITE 1600
SEATTLE, WA 98101
PHONE: 206-438-2700

PROJECT MANAGER: JJY
DESIGNED BY: RLO

DRAFTED BY: RLO
CHECKED BY: JJY

#	REVISION	COMPANY	BY	DATE
1	MINOR CORRECTIONS	DOWL	KSN	02/09/2022
2	AS-BUILT CONDITIONS - 2022	DOWL	KSN	05/05/2022
3	AS-BUILT CONDITIONS - 2023	DOWL	BJM	11/13/2023

THE PREPARATION OF THIS AIRPORT LAYOUT PLAN (ALP) WAS FINANCED IN PART THROUGH A PLANNING GRANT FROM THE FEDERAL AVIATION ADMINISTRATION (FAA) AS PROVIDED UNDER SECTION 505 OF THE AIRPORT AND AIRWAY IMPROVEMENT ACT OF 1982. THE CONTENTS DO NOT NECESSARILY REFLECT THE OFFICIAL VIEWS OR POLICIES OF THE FAA. ACCEPTANCE OF THIS ALP BY THE FAA DOES NOT IN ANY WAY CONSTITUTE A COMMITMENT ON THE PART OF THE UNITED STATES TO PARTICIPATE IN ANY DEVELOPMENT DEPICTED THEREIN NOR DOES IT IMPLY THAT THE PROPOSED DEVELOPMENT IS ENVIRONMENTALLY ACCEPTABLE IN ACCORDANCE WITH APPROPRIATE PUBLIC LAWS.



JUNEAU INTERNATIONAL AIRPORT
AIRPORT MASTER PLAN

LAND USE DRAWING

SCALE: 1" = 500'
DATE: SEPTEMBER 2018

AIP NUMBER: MULTIPLE GRANTS	10 OF 11
ASN: 2022-AAL-###-NRA	
SHEET NUMBER:	