

Montana Creek Recreation Area Master Plan

Community Meeting at Trail Mix Shop

December 7, 2022

5:30pm

Agenda

1. Introductions
2. Goals and Process Review
3. Plan Revision
4. Funding and Priorities
5. Management

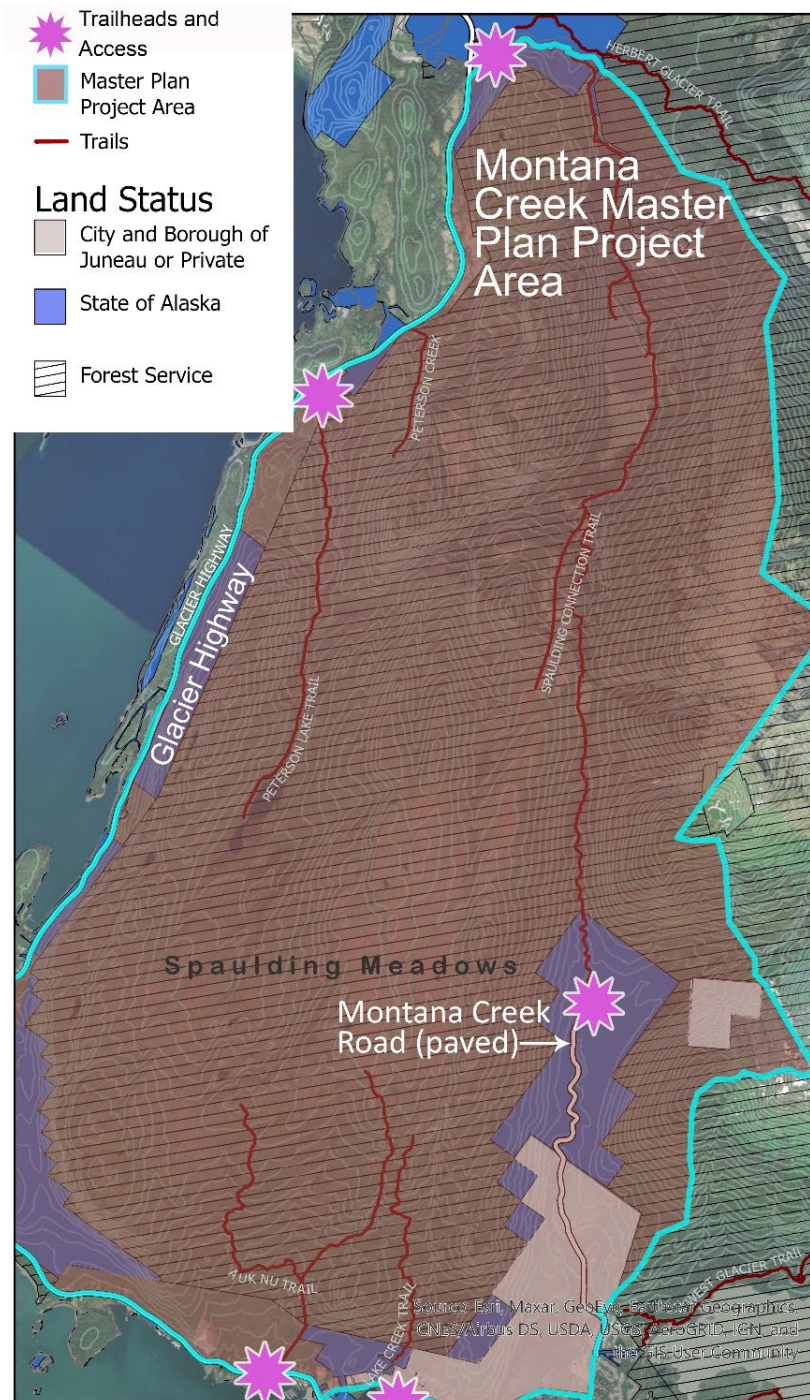


Project Goals

Create a master plan for the next ten years through a public process.

Identify recreational facilities to meet public needs.

Coordinate planning and management across land managing agencies, CBJ, DNR, USFS, and DOT.



Online Survey August 2021

- Survey Report and all comments available here:
<https://juneau.org/parks-recreation/project-list/entry/77110>



Public and Plan Process

User Group Meetings
Fall 2021

Design Charette with User Groups
Spring 2022

Community Meeting with First Draft of Plan
Summer 2022

User Groups Contacted:

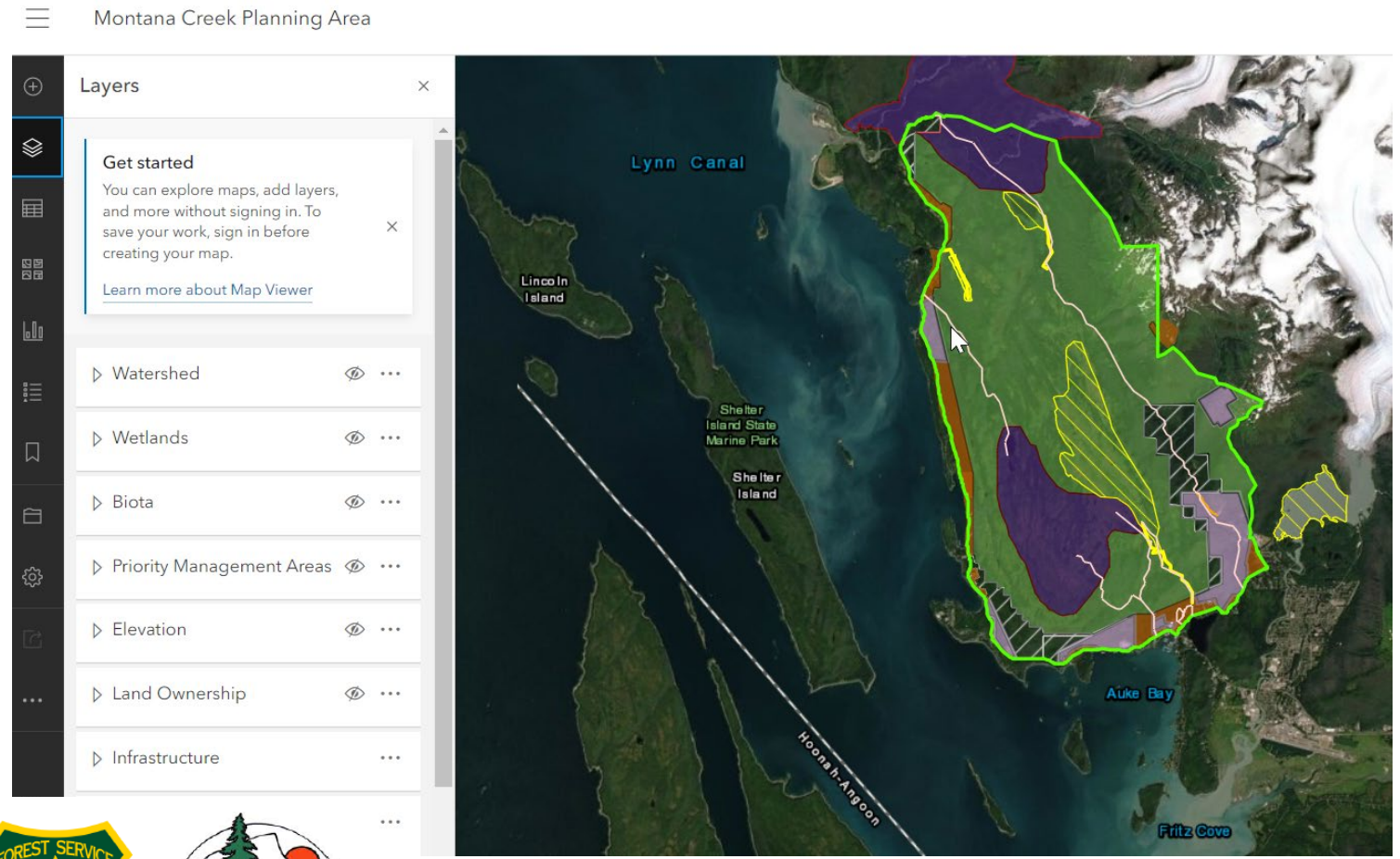
Juneau Audubon Society
Central Council Tlingit Haida
Douglas Indian Association
Sealaska Heritage Institute
Goldbelt Heritage
Discovery Southeast
Juneau Nordic Ski Club
Youth Nordic Ski Team
Lynn Canal Adventures
Juneau Mountain Bike Alliance (JMBA)
Juneau Trail and Road Runners
Juneau Alpine Club
Juneau Snowmobile Club
Juneau Off-Road Association (JORA)
Southeast Jeep Club
Hank Harmon Public Range (HHPR)
Juneau Archery Club
Territorial Sportsmen
Trout Unlimited
Southeast Alaska Independent Living (SAIL)
Southeast Alaska Watershed Coalition (SAWC)
Southeast Alaska Conservation Council (SEACC)



Public and Plan Process

Developed a public access GIS database of resource data.

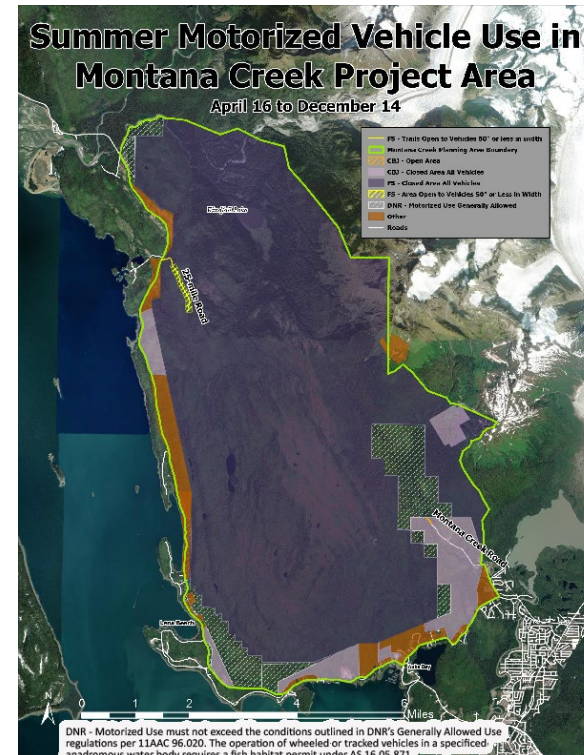
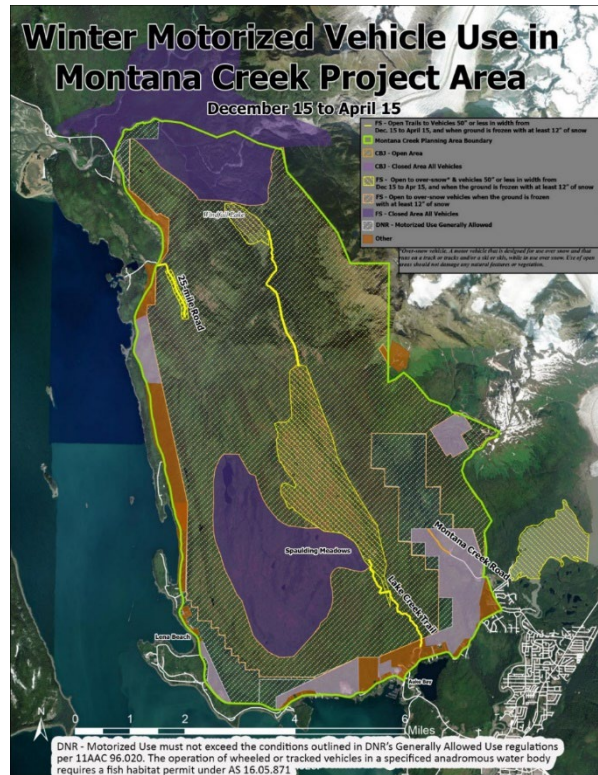
Gathered existing plans for the area and reviewed.



Created by Southeast Alaska Watershed Council

Public and Plan Process

Winter and Summer Existing Motorized Use Regulations



Revised Montana Creek Trail, Cabin and Access Plan

1A and 1B. Reconstruct Existing Trails from Montana Creek Road to Windfall Lake Access Road. Improve drainage and tread, construct alternate trail access away from creek where possible.

2A and 2B. Consider developing either the existing Lake Creek Trail or 25 Mile Road to the primary access for winter motorized use to Spaulding Meadows. Assess routes for topography and climate to determine the best shoulder season access to higher elevations. Consider a parking area at a higher elevation. Develop maintenance and management partnerships.

3. Construct new Mendenhall Glacier Area Access Trail to connect to Montana Creek Rd. Include winter connection along or near the road to the groomed trail to allow for continuous ski access. Work with partners on maintenance, management and grooming.



Revised Montana Creek Trail, Cabin and Access Plan

4. **Construct a new trail on the north east side of Montana Creek.** This trail could include a loop into the McGinnis Creek area. Further study this area for impacts to mountain goats, and creek system. Work with partners on design, maintenance, management and grooming.
5. **Construct new Montana Creek Road to Lake Creek/Spaulding Meadows connector trail.** Topographical and in the field analysis needed to identify if appropriate slopes can be constructed.
6. **Construct new John Muir- Auke Nu – Lake Creek Connector Loop trail.** Work with partners on design, maintenance, management and grooming.
7. **Construct new John Muir Cabin to Peterson Lake Cabin connector trail.** This trail could include a loop to the base of Auke Mountain. Work with partners on design, maintenance, management and grooming.



Revised Montana Creek Trail, Cabin and Access Plan

8. **Construct new Peterson Lake Trail to new cabin to Montana Creek Trail connector.**
9. **Construct trail extending from 25 Mile Road to connect to new cabin.** Work with partners to design, manage and maintain the trail for winter motorized use. See trail 2A and 2B for assessment of higher elevation primary access and parking.
10. **Construct University- Auke Lake – Auke Bay Elementary – Auke Nu Community connector trail.** Connect existing and social trails between community facilities and access points to neighborhoods. Work with the University of Alaska and the Juneau School District on trail design to ensure community connections.



Revised Montana Creek Trail, Cabin and Access Plan

Additional Items Recommended in Plan (from public comments)

- Consistent wayfinding and interpretive signage across land ownership. This may include speed limits or other considerations for multi-use where appropriate.
- Warming shelters and covered structures may be added, for example covered picnic tables or warming shelters in remote areas. Consider using proposed cabin as a daytime warming shelter.
- Bathrooms at trailheads if no public bathrooms are nearby.
- Repair and rehabilitate resource damaged areas due to human causes. Prioritize sensitive areas.
- Prioritize accessibility for trails, trailheads and facilities.



Funding and Priorities

- Agencies set priorities for construction of plan recommendations.
- USFS requests federal funding for proposed cabin.
- DOT, CBJ and private groups request funding through federal Transportation Alternatives Program for Montana Creek bridge replacement.
- CBJ develops funding plan for recommended trails on CBJ land.
- Continue discussions and look for funding for preliminary assessments of 25 Mile Road or Lake Creek Road higher elevation parking and access.



Management and Next Steps

- DNR and CBJ consider Cooperative Management Agreement for management of state lands around Montana Creek Road and Trail per the Juneau State Land Plan recommendation.
- DOT and CBJ pursue replacement of the Montana Creek Bridge and transfer of ownership of the bridge and road to CBJ.
- Agencies provide guidance in the final plan on how to apply for, fund, and construct trails or improvements per the plan on federal, state and city land.
- Agencies develop coordinated enforcement protocols with better communication and cooperation.



Questions?

Written **comments** will be accepted on Draft Plan
at Parks.Rec@juneau.org until December 21st at 5pm.

This slideshow and all of the background data presented on the project are located here:
<https://juneau.org/parks-recreation/project-list/entry/77110>

Thank you so much to all of the community groups and individuals who have participated and donated time to this effort. Many of you put in many hours of review, thought and discussion on this project and we really appreciate it!

