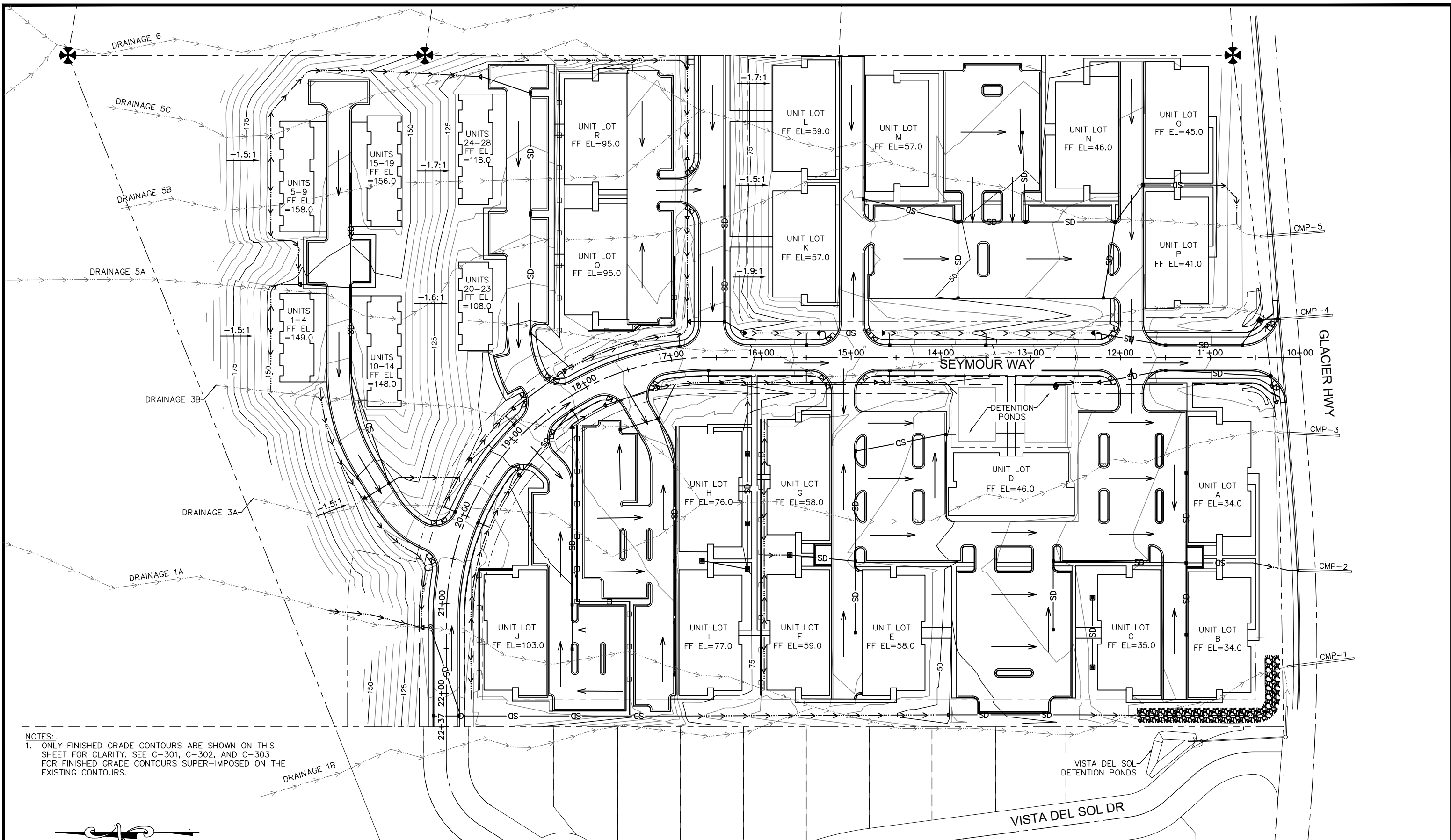
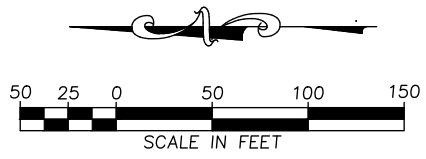


C:\Users\Toby\Homeshore LLC\Homeshore - Shared\Projects\22-007 Ridgeview Subdivision - PH 2\60 CAD\SC\_CS\_RD\_50SCALE\_22-007.dwg SAVED DATE: 2022-11-14 USER: TOBY



NOTES:  
 1. ONLY FINISHED GRADE CONTOURS ARE SHOWN ON THIS SHEET FOR CLARITY. SEE C-301, C-302, AND C-303 FOR FINISHED GRADE CONTOURS SUPER-IMPOSED ON THE EXISTING CONTOURS.



REVISION			
No.	DATE	DESCRIPTION.	BY



6035 Sunset Street  
 Juneau, Alaska 99801  
 907-463-5395  
 Toby Lockhart  
 toby@homeshorellc.com  
 Candy Sims  
 candy@homeshorellc.com



RIDGEVIEW SUBDIVISION  
 OVERALL GRADING AND  
 DRAINAGE PLAN

PROJECT 22-007  
 DATE 11/7/2022

SHEET  
**G-001**

C:\Users\Candy Sims\Homeshore LLC\Homeshore - Shared\Projects\22-007 Ridgeview Subdivision - PH 2\60 CAD\SC\_LD\_22-007.dwg SAVED DATE: 2022-11-14 USER: CANDY SIMS

# LEGEND

DESCRIPTION	EXISTING	PROPOSED
ADA TILE & RAMP		
AREA DRAIN		
CAP		
CATCH BASIN		
CURB & GUTTER		
DITCH CENTERLINE		
EASEMENT LINE		
EDGE OF ASPHALT		
FIRE HYDRANT		
FLAT BOTTOM DITCH		
HEADWALL		
MONUMENT		
PROPERTY LINE		
RETAINING WALL		
SANITARY SEWER CLEANOUT		
SANITARY SEWER GRAVITY PIPE		
SANITARY SEWER MANHOLE		
SHOULDER		
STORM DRAIN PIPE		
SURFACE FLOW		
WATER LINE PIPE		
WATER VALVE BOX		

# ABBREVIATIONS

BVCE	BEGIN VERTICAL CURVE ELEVATION
BVCS	BEGIN VERTICAL CURVE STATION
CB	CATCH BASIN
CL	CENTERLINE
CMP	CORRUGATED METAL PIPE
CPP	CORRUGATED POLYETHYLENE PIPE
ELEV	ELEVATION
GV	GATE VALVE
HDPE	HIGH DENSITY POLYETHYLENE PIPE
INV	INVERT
LT	LEFT
LVC	LENGTH OF VERTICAL CURVE
MH	MANHOLE
PVC	POLYVINYL CHLORIDE
PVI	POINT OF VERTICAL CURVE
ROW	RIGHT-OF-WAY
RT	RIGHT
SD	STORM DRAIN
SS	SANITARY SEWER
STA	STATION

REVISION			
No.	DATE	DESCRIPTION.	BY



6035 Sunset Street  
Juneau, Alaska 99801  
907-463-5395

Toby Lockhart  
toby@homeshorellc.com  
Candy Sims  
candy@homeshorellc.com



PLAN • CREATE • INNOVATE

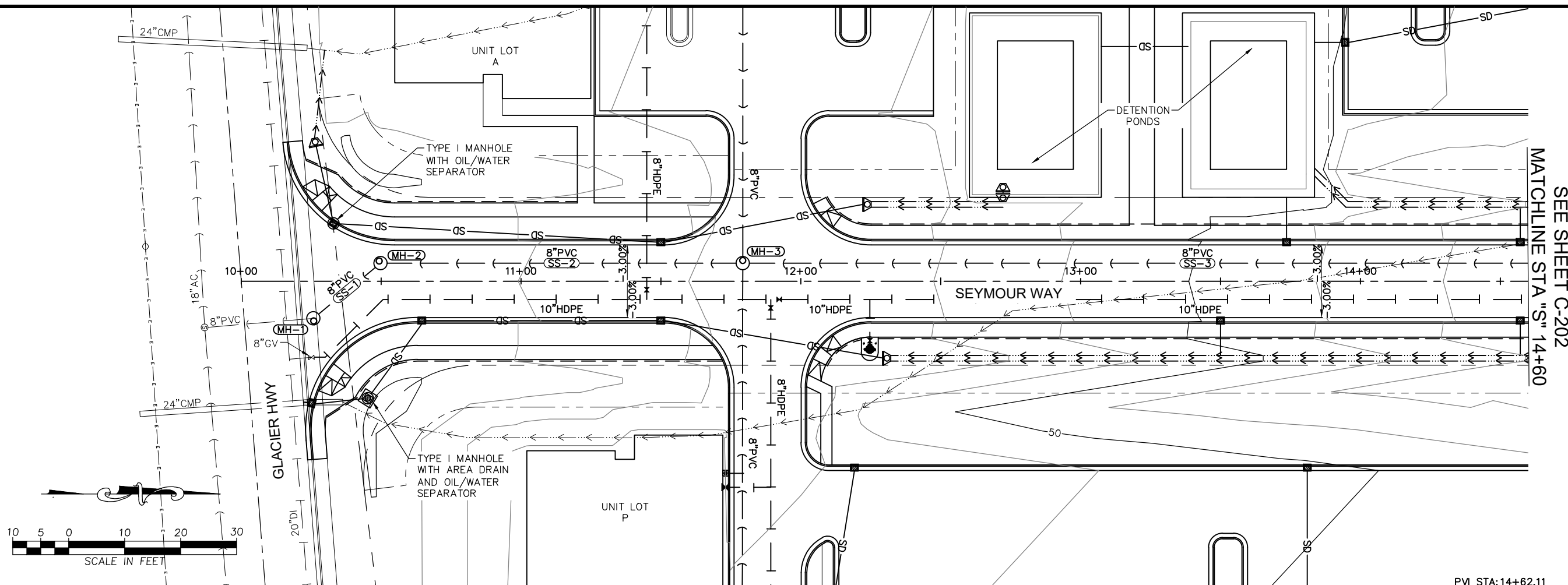
RIDGEVIEW SUBDIVISION

LEGEND, AND ABBREVIATIONS

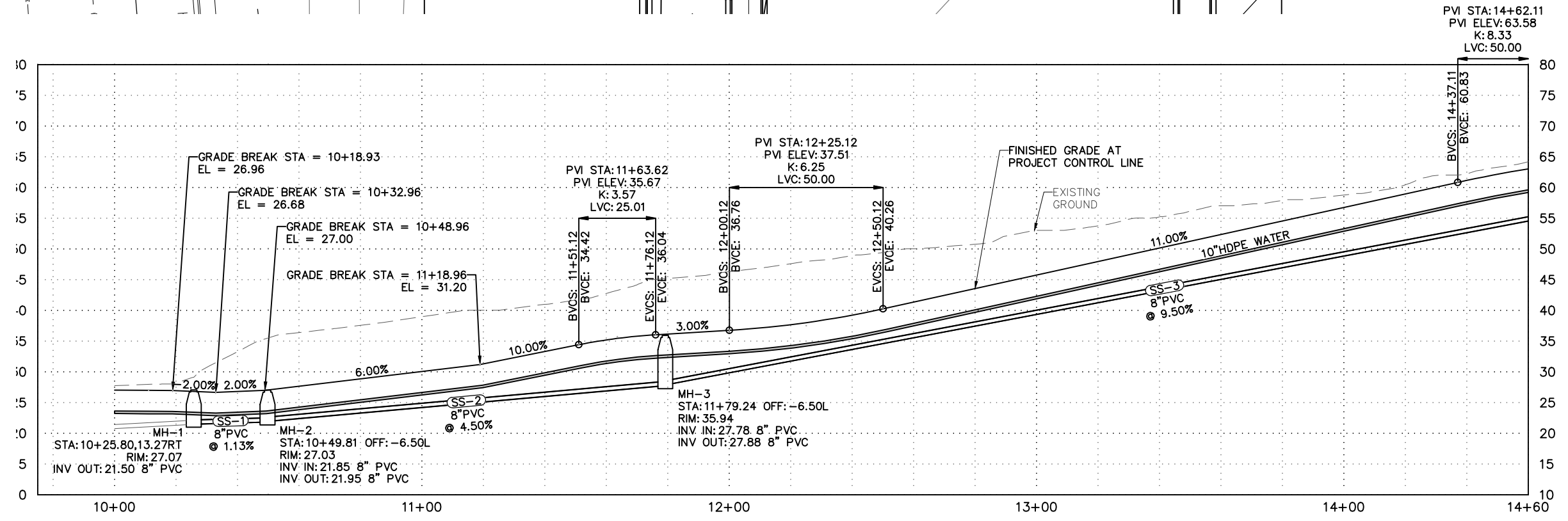
PROJECT 22-007  
DATE 11/7/2022

SHEET  
**G-002**

C:\Users\Toby\Homeshore LLC\Homeshore - Shared\Projects\22-007 Ridgeview Subdivision - PH 2\60 CAD\SC\_CS\_PP\_22-007.dwg SAVED DATE: 2022-11-14 USER: TOBY



SEE SHEET C-202  
MATCHLINE STA "S" 14+60



NOTES:  
1. STORM DRAIN NOT SHOWN IN PROFILE FOR CLARITY.

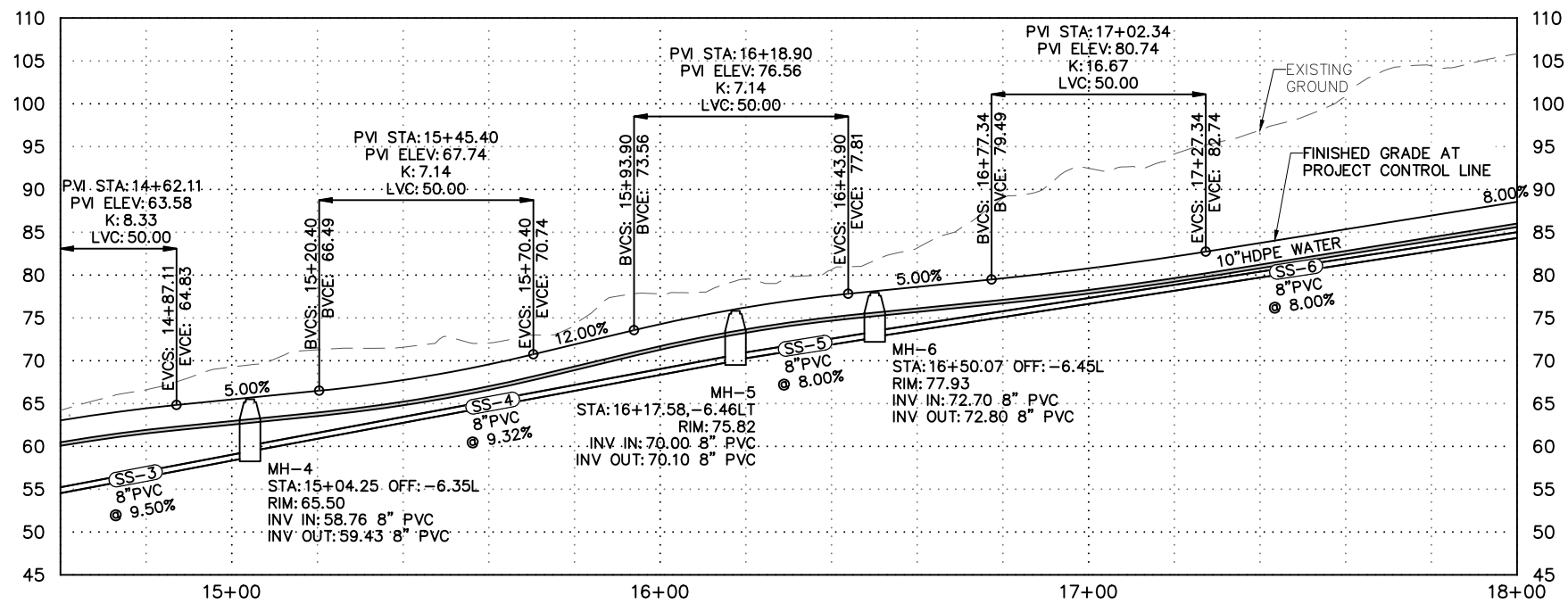
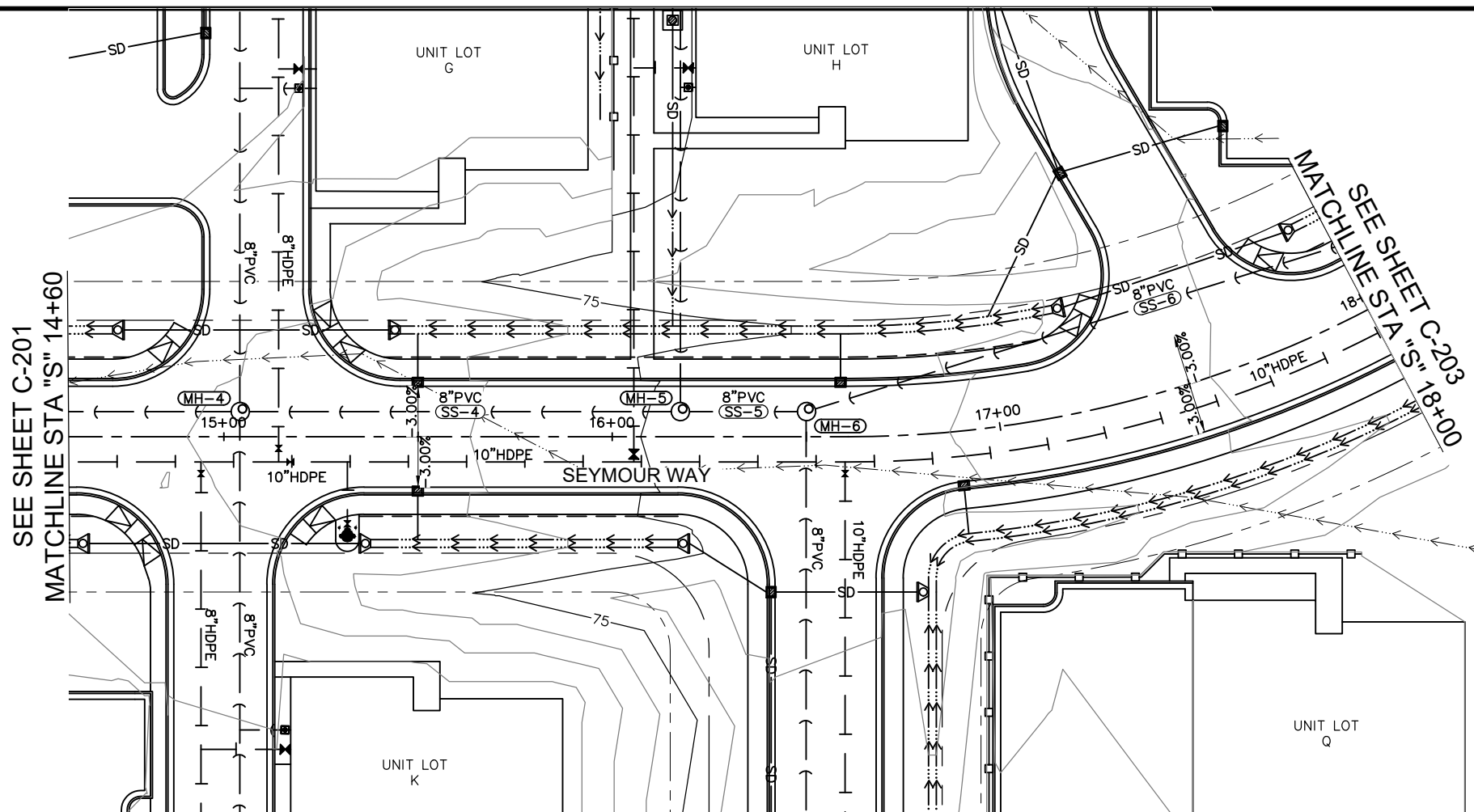
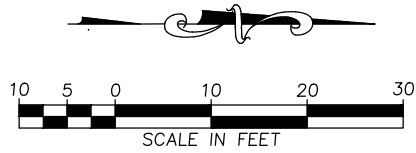
REVISION			
No.	DATE	DESCRIPTION	BY


  
 6035 Sunset Street  
 Juneau, Alaska 99801  
 907-463-5395  
 Toby Lockhart  
 toby@homeshorellc.com  
 Candy Sins  
 candy@homeshorellc.com


  
 PLAN • CREATE • INNOVATE

RIDGEVIEW SUBDIVISION  
  
 PLAN AND PROFILE  
 GLACIER HIGHWAY TO STA "S" 14+60

PROJECT 22-007  
 DATE 11/7/2022  
  
 SHEET  
**C-201**



NOTES:  
1. STORM DRAIN NOT SHOWN IN PROFILE FOR CLARITY.

REVISION			
No.	DATE	DESCRIPTION	BY



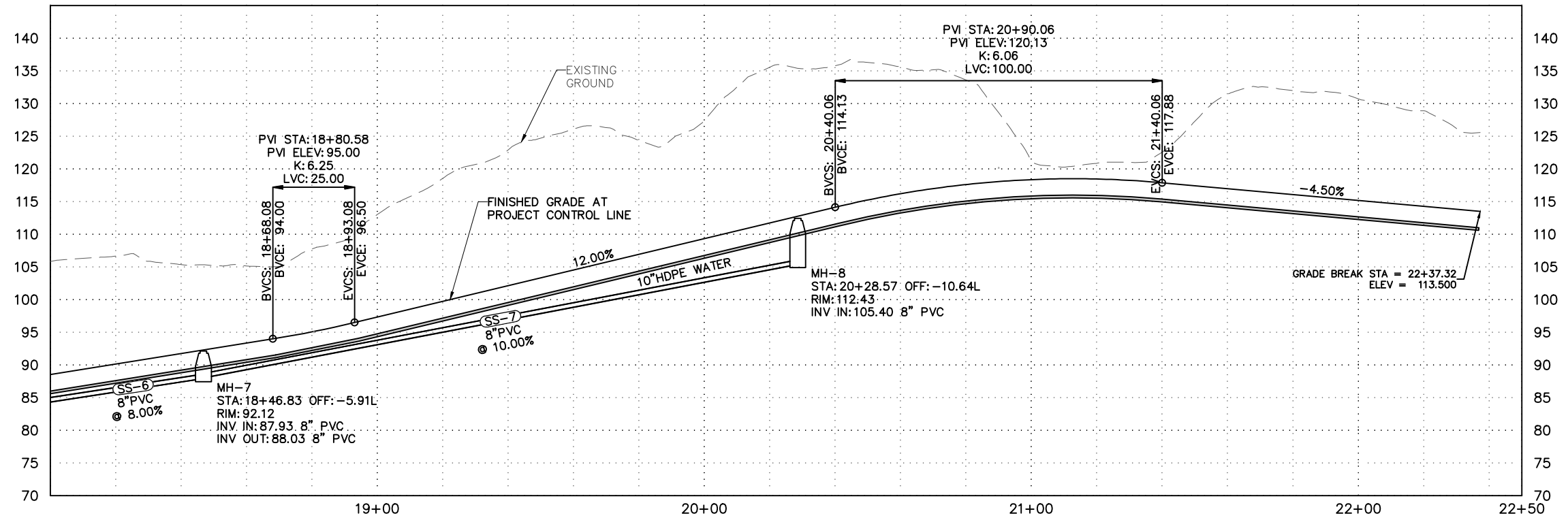
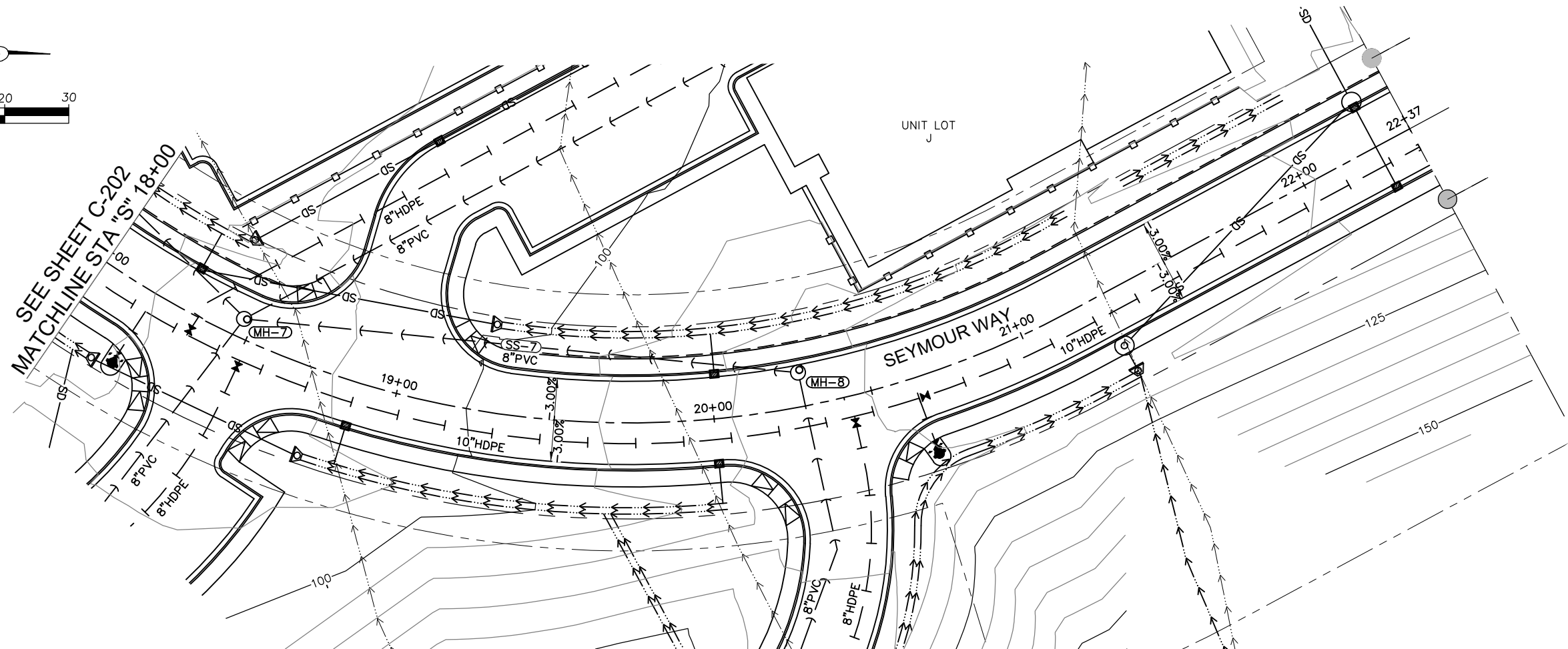
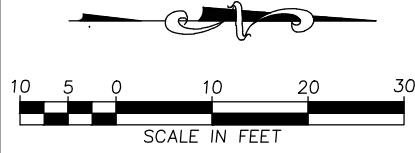
6035 Sunset Street  
Juneau, Alaska 99801  
907-463-5395  
Toby Lockhart  
toby@homeshorellc.com  
Candy Sims  
candy@homeshorellc.com



RIDGEVIEW SUBDIVISION  
PLAN AND PROFILE  
STA "S" 14+60 TO STA "S" 18+00

PROJECT 22-007  
DATE 11/7/2022

SHEET  
C-202



C:\Users\Toby\Homeshore LLC\Homeshore - Shared\Projects\22-007 Ridgeview Subdivision - PH 2\60 CAD\CAD\C\_S\_PP\_22-007.dwg SAVED DATE: 2022-11-14 USER: TOBY

REVISION			
No.	DATE	DESCRIPTION	BY

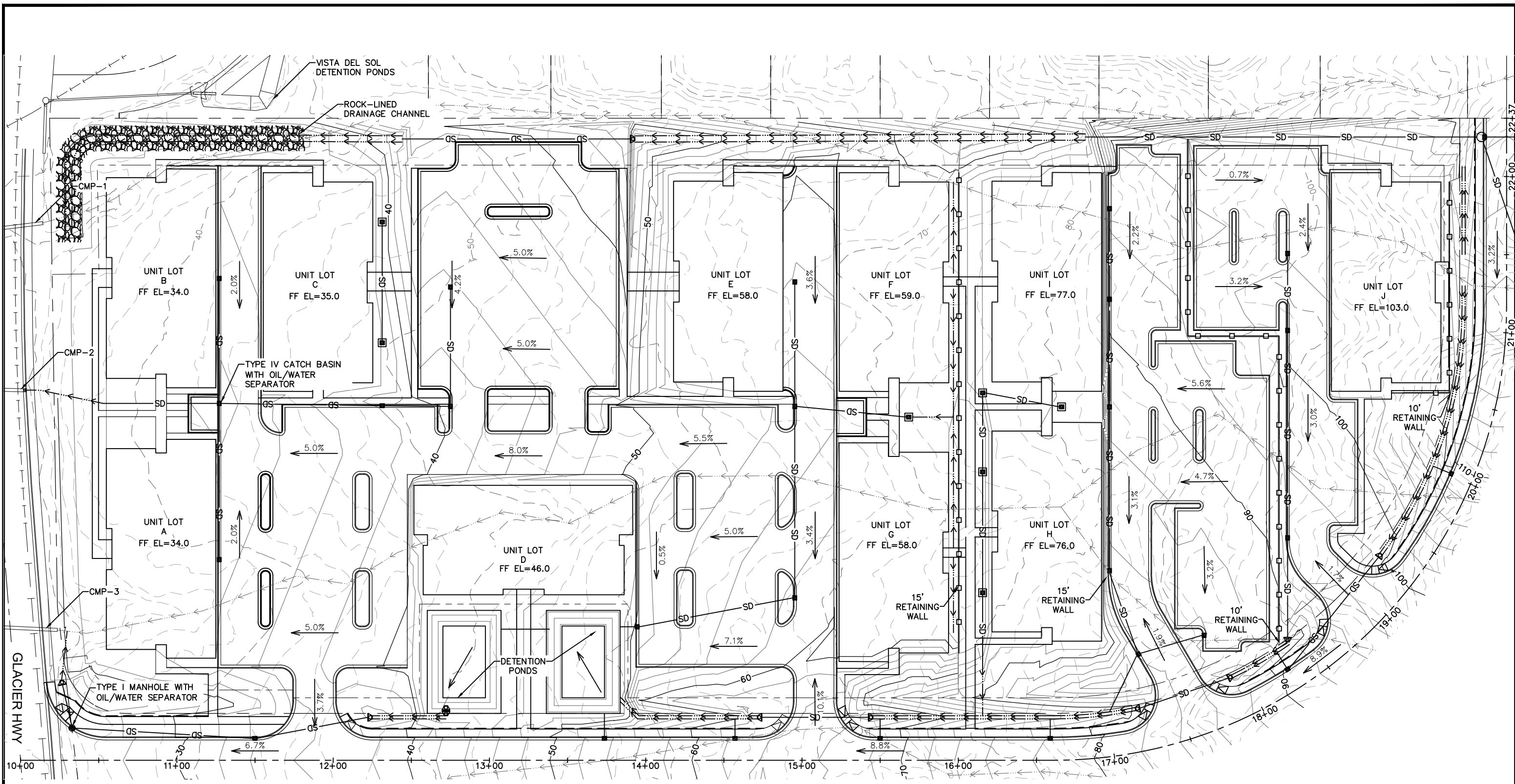
**HOMESHORE ENGINEERING, LLC**  
 6035 Sunset Street  
 Juneau, Alaska 99801  
 907-463-5395  
 Toby Lockhart  
 toby@homeshorellc.com  
 Candy Sins  
 candy@homeshorellc.com

**EPCI**  
 PLAN • CREATE • INNOVATE

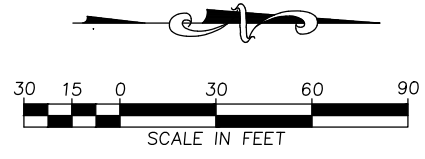
**RIDGEVIEW SUBDIVISION**  
 PLAN AND PROFILE  
 STA "S" 18+00 TO STA "S" 22+50

PROJECT 22-007  
 DATE 11/7/2022  
 SHEET  
**C-203**

C:\Users\Candy Sims\Homeshore LLC\Homeshore - Shared\Projects\22-007 Ridgeview Subdivision - PH 2\60 CAD\SC\_CS\_RD\_305SCALE\_22-007.dwg SAVED DATE: 2022-11-14 USER: CANDY SIMS



**SEYMOUR WAY**  
SEE SHEET C-302



REVISION			
No.	DATE	DESCRIPTION	BY

**HOMESHORE ENGINEERING, LLC**  
6035 Sunset Street  
Juneau, Alaska 99801  
907-463-5395  
Toby Lockhart  
toby@homeshorellc.com  
Candy Sims  
candy@homeshorellc.com

**EPCI**  
PLAN • CREATE • INNOVATE

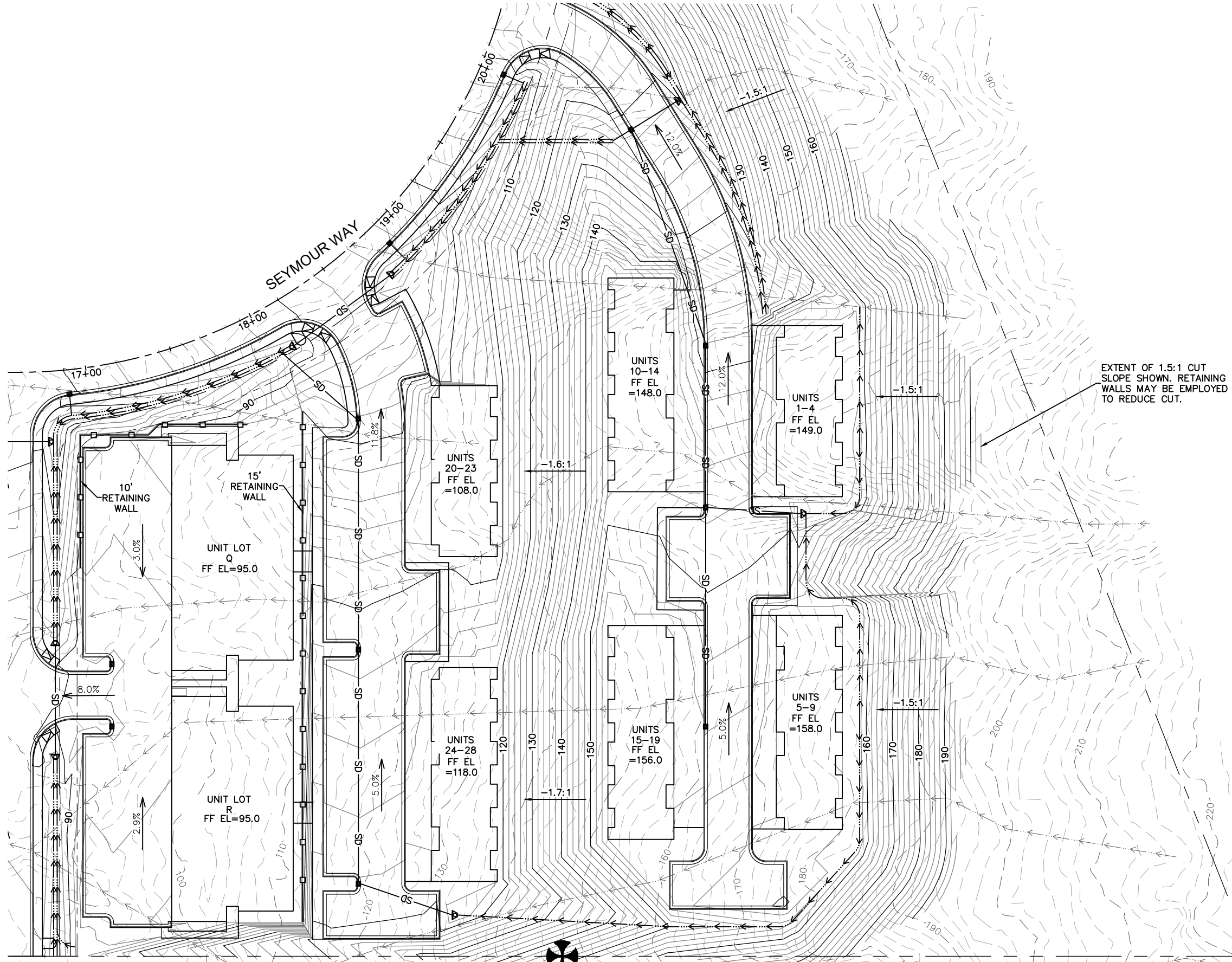
RIDGEVIEW SUBDIVISION  
PARENT LOT 1  
TOPOGRAPHIC INFORMATION  
AND DRAINAGE SCHEME

PROJECT 22-007  
DATE 11/7/2022

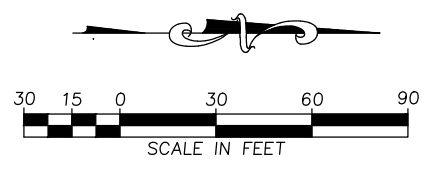
SHEET  
**C-301**



C:\Users\Candy Sims\Homeshore LLC\Homeshore - Shared\Projects\22-007 Ridgeview Subdivision - PH 2\60 CAD\SC\_CS\_RD\_30SCALE\_22-007.dwg SAVED DATE: 2022-11-14 USER: CANDY SIMS



SEE SHEET C-302



REVISION			
No.	DATE	DESCRIPTION.	BY

**HOMESHORE**  
ENGINEERING, LLC

6035 Sunset Street  
Juneau, Alaska 99801  
907-463-5395

Toby Lockhart  
toby@homeshorellc.com  
Candy Sims  
candy@homeshorellc.com

**EPCI**  
PLAN • CREATE • INNOVATE

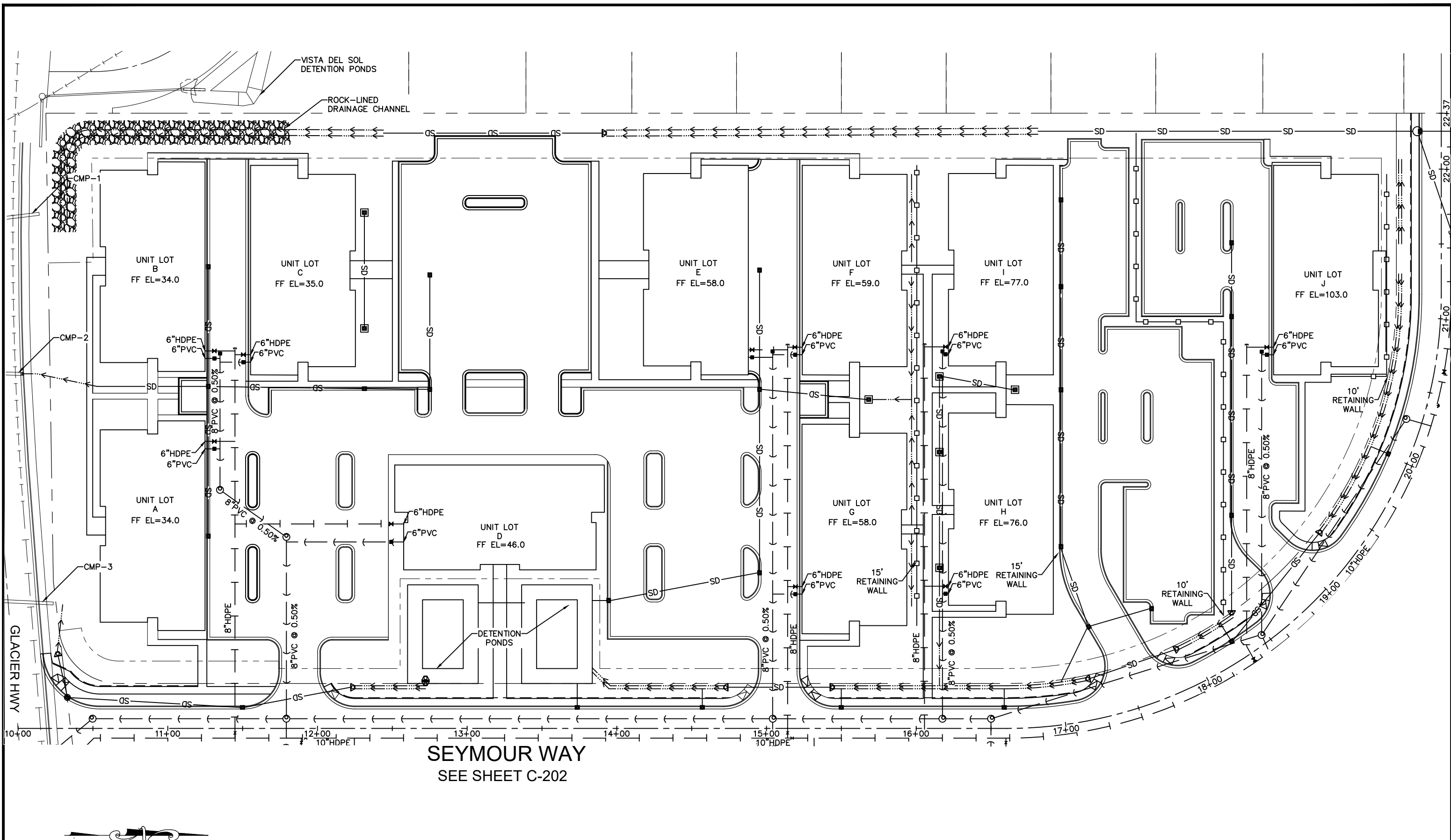
RIDGEVIEW SUBDIVISION  
PARENT LOT 3  
TOPOGRAPHIC INFORMATION  
AND DRAINAGE SCHEME

PROJECT 22-007  
DATE 11/7/2022

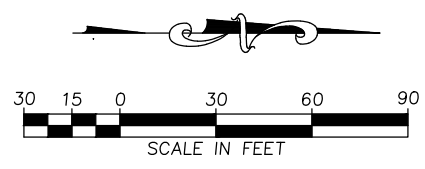
SHEET  
**C-303**



C:\Users\Candy Sims\HomeShore LLC\HomeShore - Shared\Projects\22-007 Ridgeview Subdivision - PH 2\60 CAD\SC\_CS\_RD\_305SCALE\_22-007.dwg SAVED DATE: 2022-11-14 USER: CANDY SIMS



**SEYMOUR WAY**  
SEE SHEET C-202



REVISION			
No.	DATE	DESCRIPTION	BY

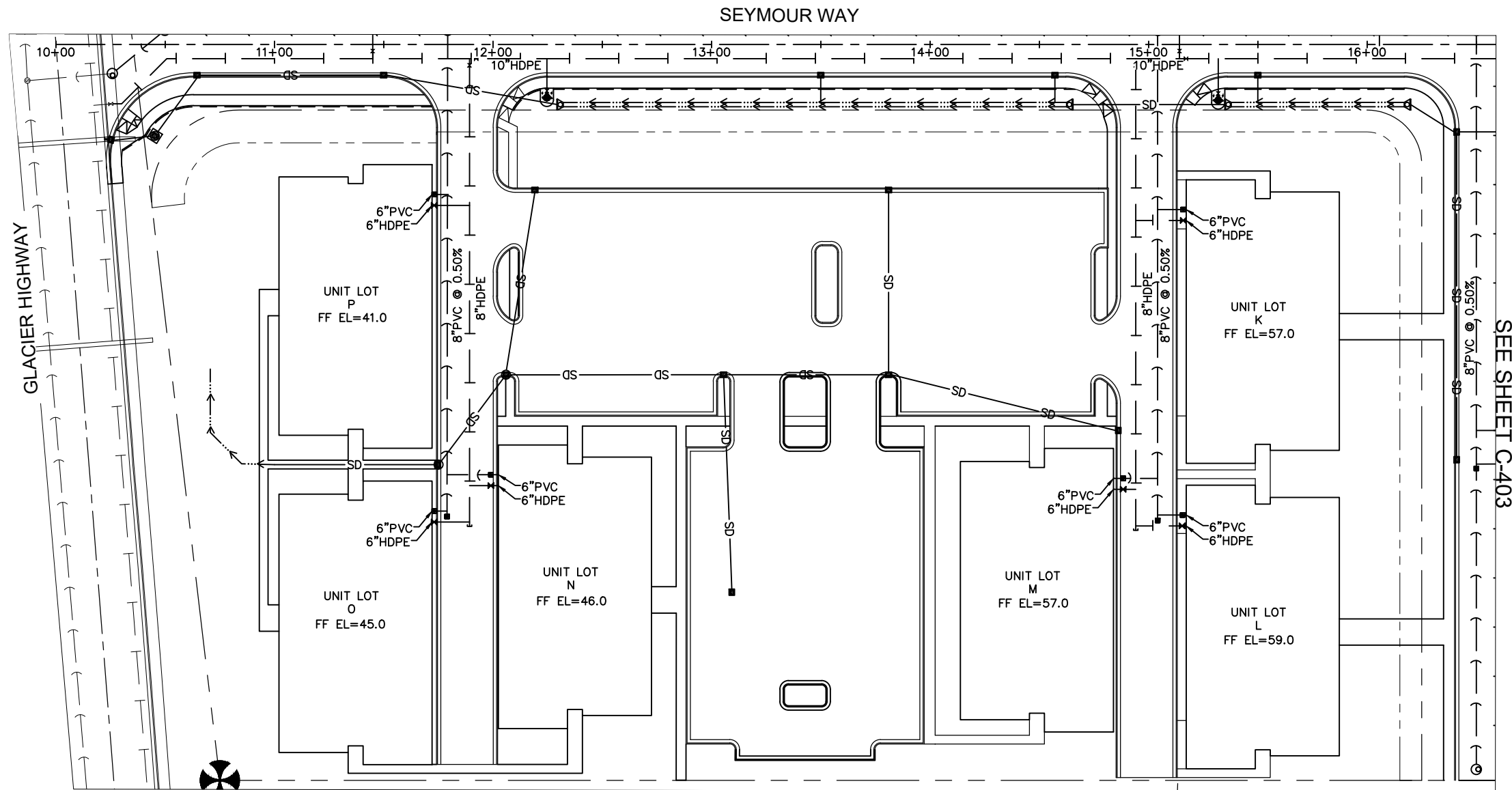
**HOMESHORE ENGINEERING, LLC**  
6035 Sunset Street  
Juneau, Alaska 99801  
907-463-5395  
Toby Lockhart  
toby@homeshorellc.com  
Candy Sims  
candy@homeshorellc.com

**EPCI**  
PLAN • CREATE • INNOVATE

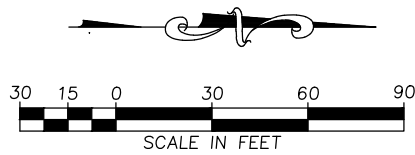
**RIDGEVIEW SUBDIVISION**  
  
**PARENT LOT 1**  
**WATER AND SANITARY SEWER**

PROJECT 22-007  
DATE 11/7/2022  
  
SHEET  
**C-401**

C:\Users\Candy Sims\Homeshore LLC\Homeshore - Shared\Projects\22-007 Ridgeview Subdivision - PH 2\60 CAD\SC\_CS\_RD\_305SCALE\_22-007.dwg SAVED DATE: 2022-11-14 USER: CANDY SIMS



SEE SHEET C-403



REVISION			
No.	DATE	DESCRIPTION	BY

**HOMESHORE ENGINEERING, LLC**  
6035 Sunset Street  
Juneau, Alaska 99801  
907-463-5395  
Toby Lockhart  
toby@homeshorellc.com  
Candy Sims  
candy@homeshorellc.com

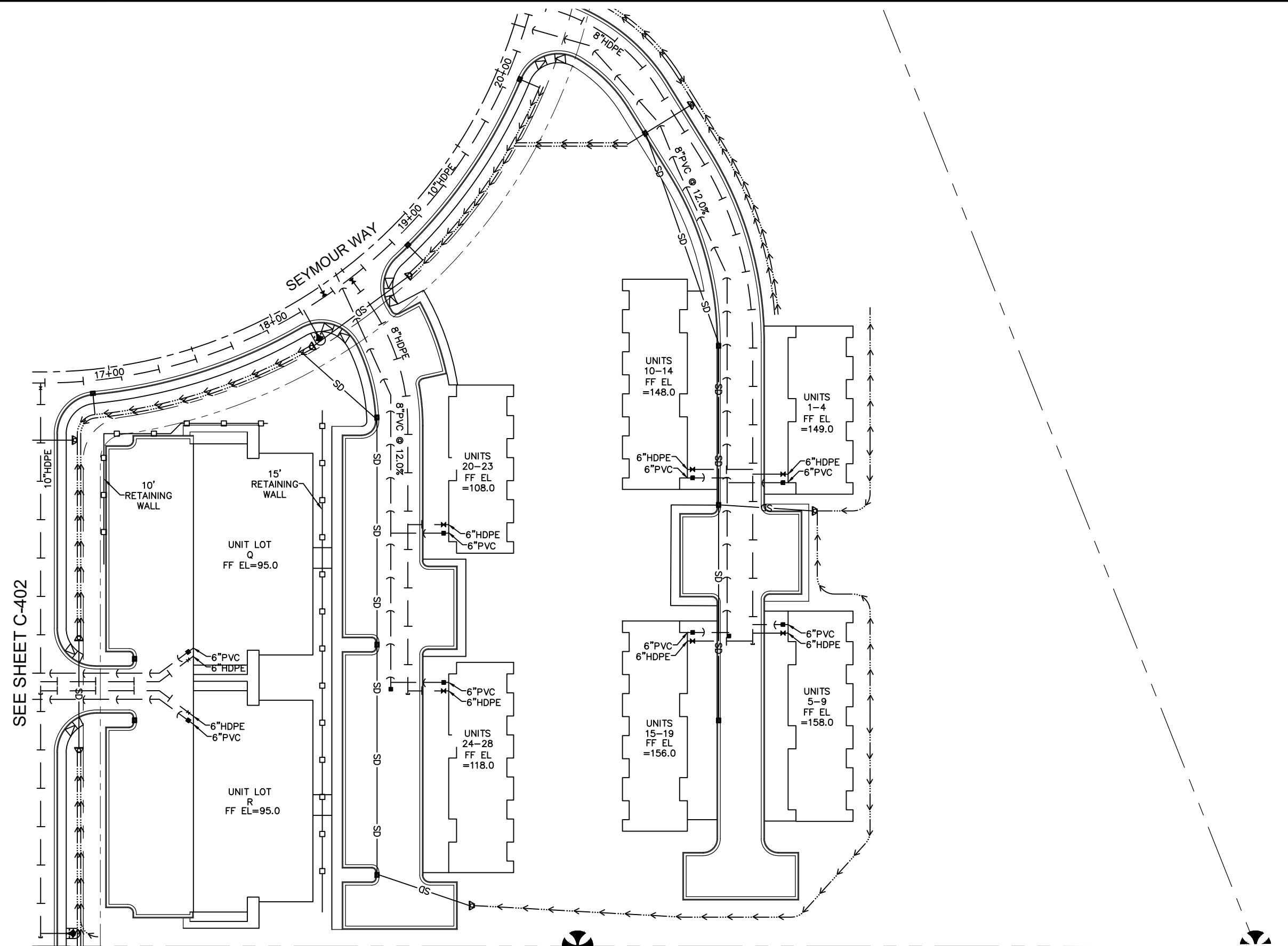
**EPCI**  
PLAN • CREATE • INNOVATE

RIDGEVIEW SUBDIVISION  
PARENT LOT 2  
WATER AND SANITARY SEWER

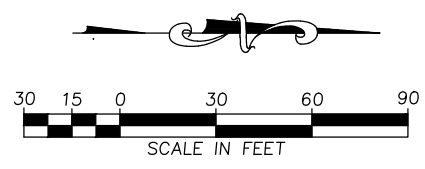
PROJECT 22-007  
DATE 11/7/2022

SHEET  
**C-402**

C:\Users\Candy Sims\Homeshore LLC\Homeshore - Shared\Projects\22-007 Ridgeview Subdivision - PH 2\60 CAD\SC\_CS\_RD\_30SCALE\_22-007.dwg SAVED DATE: 2022-11-14 USER: CANDY SIMS



SEE SHEET C-402



REVISION			
No.	DATE	DESCRIPTION	BY

6035 Sunset Street  
Juneau, Alaska 99801  
907-463-5395

Toby Lockhart  
toby@homeshorellc.com  
Candy Sims  
candy@homeshorellc.com

PLAN • CREATE • INNOVATE

RIDGEVIEW SUBDIVISION

PARENT LOT 3  
WATER AND SANITARY SEWER

PROJECT 22-007  
DATE 11/7/2022

SHEET  
**C-403**