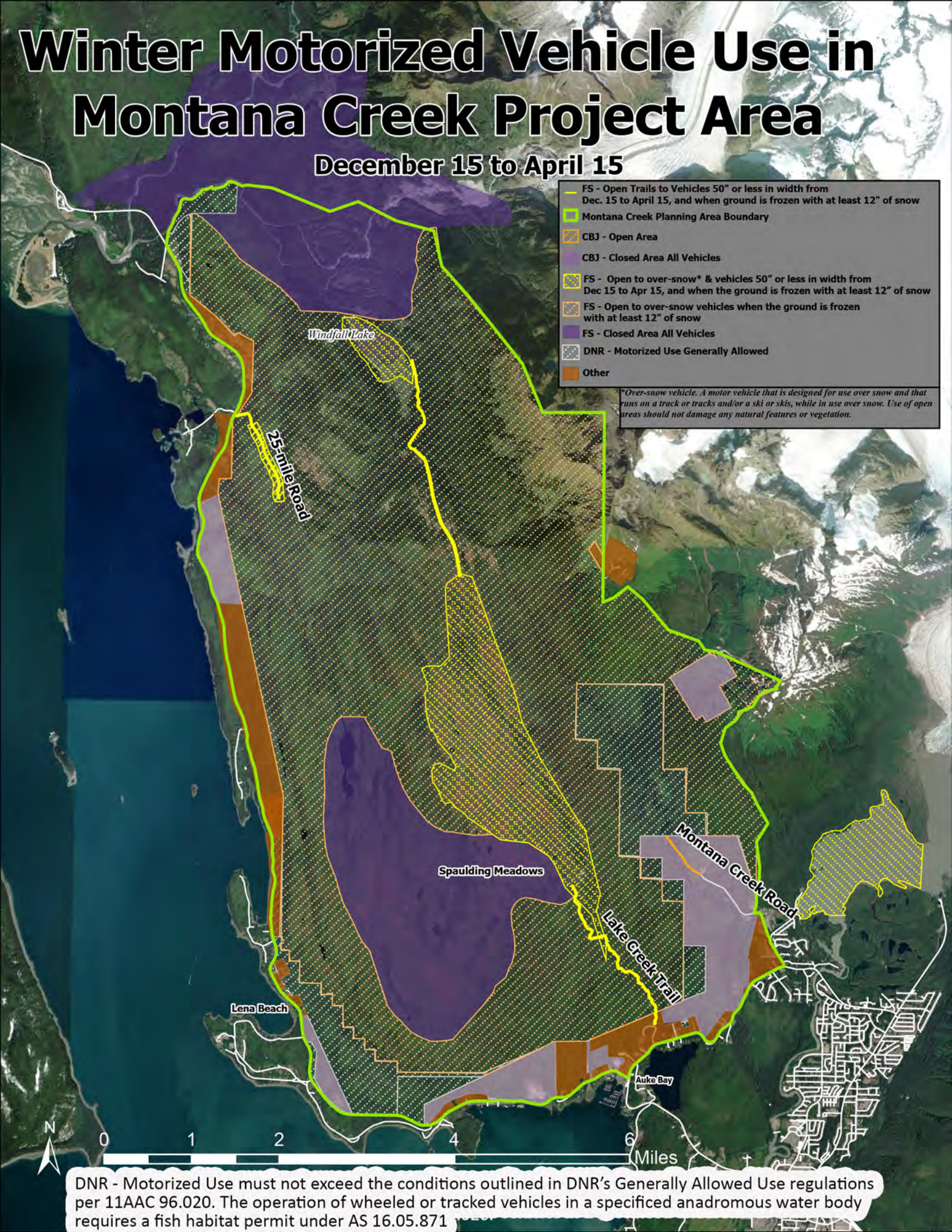


Winter Motorized Vehicle Use in Montana Creek Project Area

December 15 to April 15

- FS - Open Trails to Vehicles 50" or less in width from Dec. 15 to April 15, and when ground is frozen with at least 12" of snow
- Montana Creek Planning Area Boundary
- CBJ - Open Area
- CBJ - Closed Area All Vehicles
- FS - Open to over-snow* & vehicles 50" or less in width from Dec 15 to Apr 15, and when the ground is frozen with at least 12" of snow
- FS - Open to over-snow vehicles when the ground is frozen with at least 12" of snow
- FS - Closed Area All Vehicles
- DNR - Motorized Use Generally Allowed
- Other

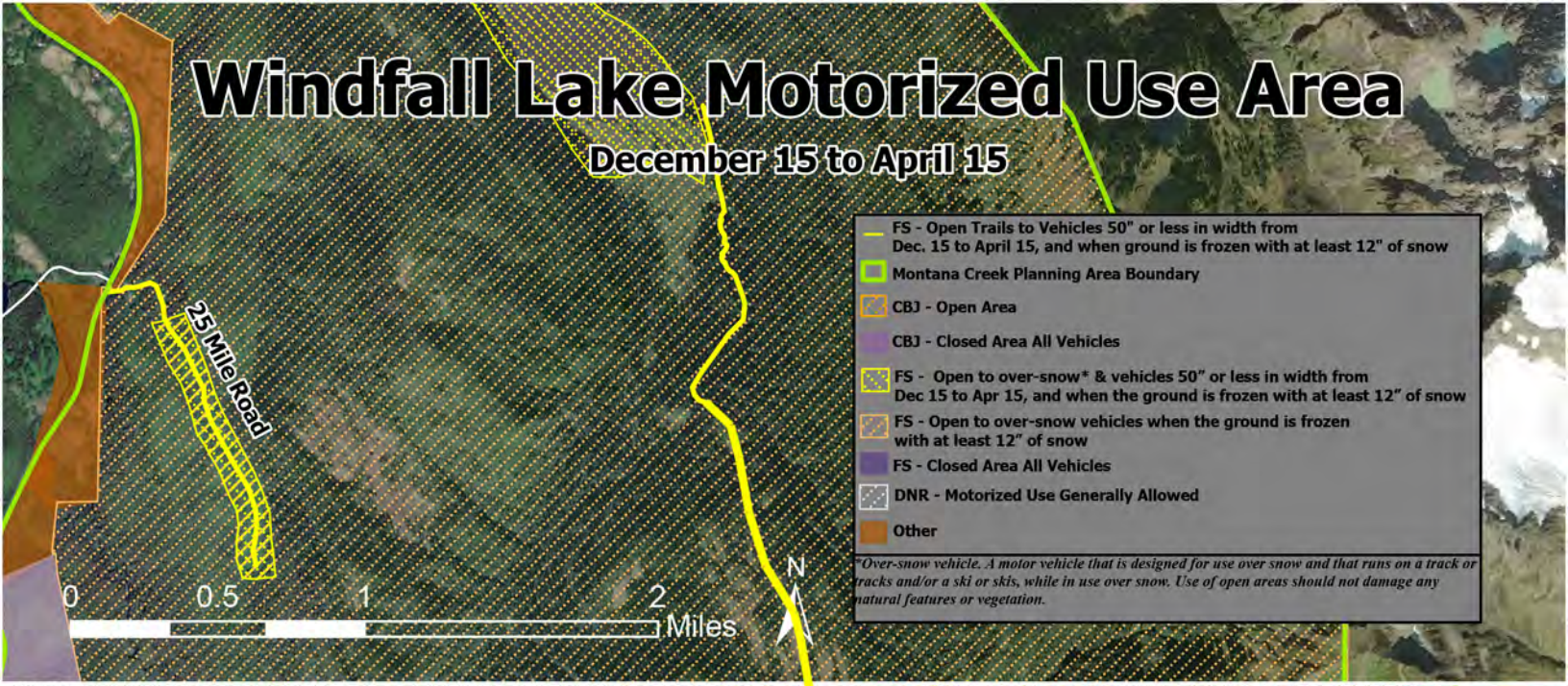
*Over-snow vehicle. A motor vehicle that is designed for use over snow and that runs on a track or tracks and/or a ski or skis, while in use over snow. Use of open areas should not damage any natural features or vegetation.



DNR - Motorized Use must not exceed the conditions outlined in DNR's Generally Allowed Use regulations per 11AAC 96.020. The operation of wheeled or tracked vehicles in a specified anadromous water body requires a fish habitat permit under AS 16.05.871

Windfall Lake Motorized Use Area

December 15 to April 15



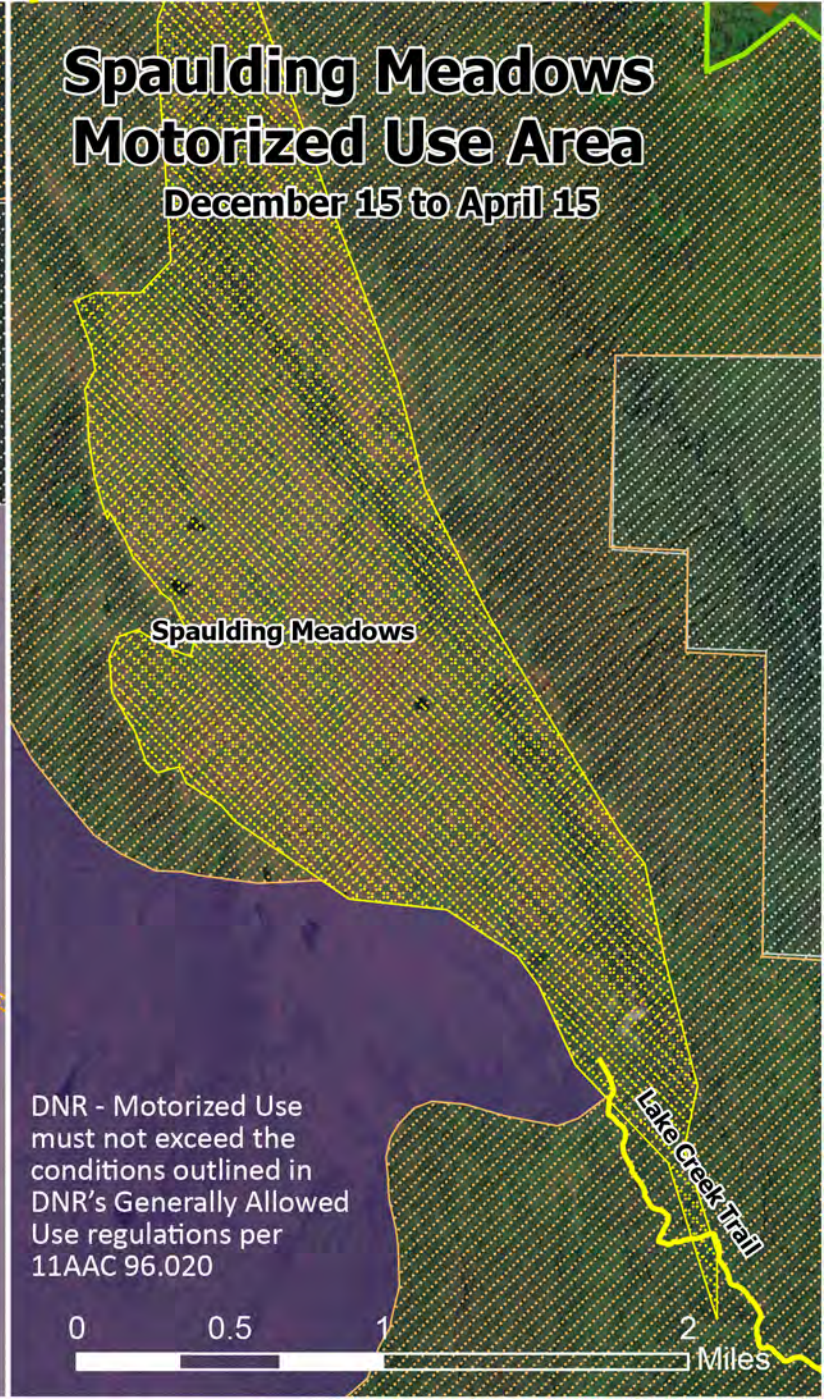
Montana Creek Motorized Use Area

December 15 to April 15



Spaulding Meadows Motorized Use Area

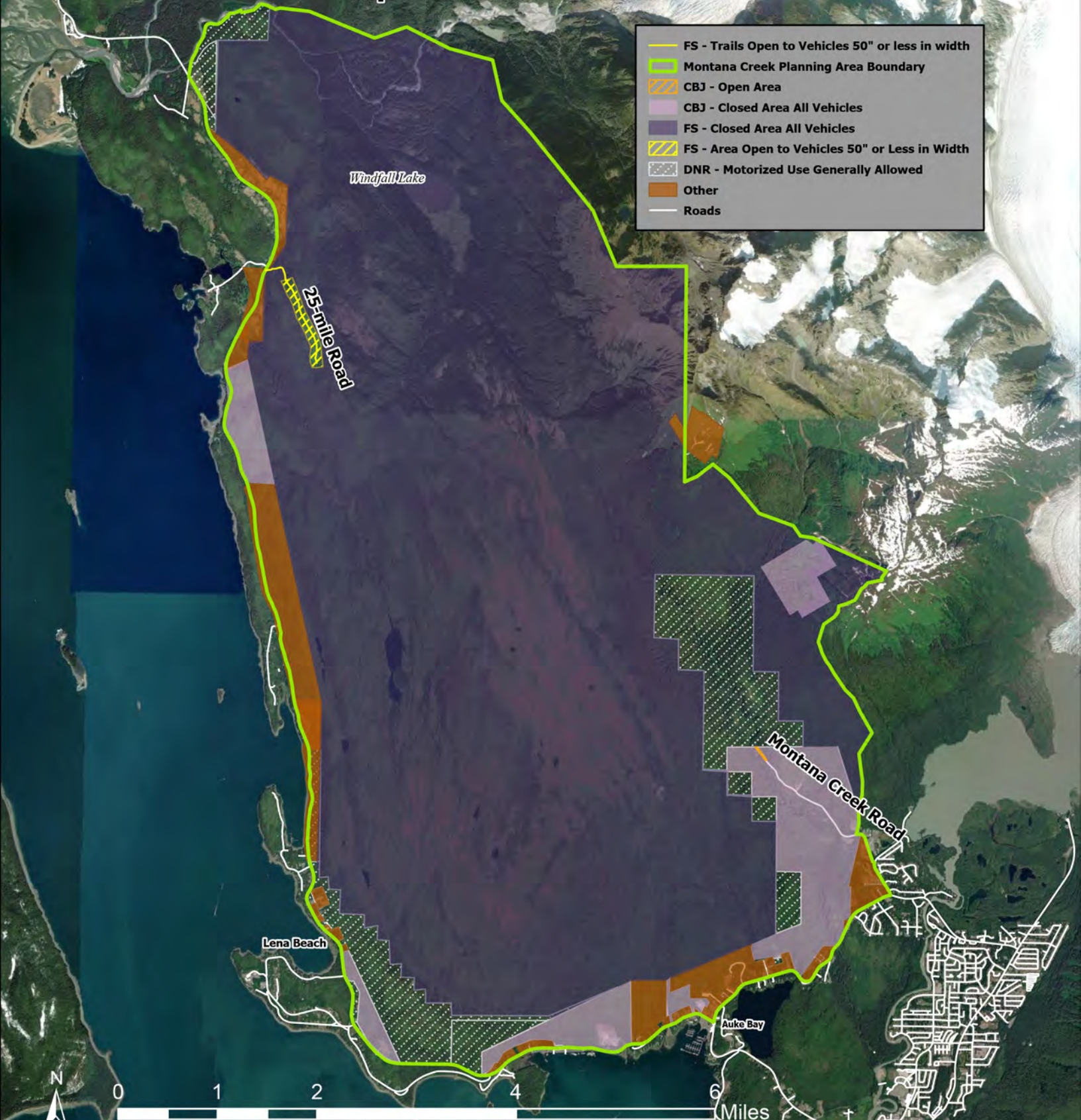
December 15 to April 15



Summer Motorized Vehicle Use in Montana Creek Project Area

April 16 to December 14

- FS - Trails Open to Vehicles 50" or less in width
- Montana Creek Planning Area Boundary
- CBJ - Open Area
- CBJ - Closed Area All Vehicles
- FS - Closed Area All Vehicles
- FS - Area Open to Vehicles 50" or Less in Width
- DNR - Motorized Use Generally Allowed
- Other
- Roads



DNR - Motorized Use must not exceed the conditions outlined in DNR's Generally Allowed Use regulations per 11AAC 96.020. The operation of wheeled or tracked vehicles in a specified anadromous water body requires a fish habitat permit under AS 16.05.871

Windfall Lake Motorized Use Area

April 16 to December 14

- FS - Trails Open to Vehicles 50" or less in width
- Montana Creek Planning Area Boundary
- CBJ - Open Area
- CBJ - Closed Area All Vehicles
- FS - Closed Area All Vehicles
- FS - Area Open to Vehicles 50" or Less in Width
- DNR - Motorized Use Generally Allowed
- Other
- Roads

0 0.5 1 2 Miles



Montana Creek Motorized Use Area

April 16 to December 14

Montana Creek Road

0 0.5 1 2 Miles

Spaulding Meadows Motorized Use Area

April 16 to December 14

Spaulding Meadows

0 0.5 1 2 Miles