



NAME: _____
AGE: _____

2022 PASSPORT TO PLAY!



Drop in for a FREE open swim - once at each pool! Up to two guardians can swim, too!



ASK A POOL ATTENDANT FOR A STAMP HERE!



JUNEAU PUBLIC LIBRARIES

Stop in at any of the libraries and find the fish. What color is the one with the Month of Play logo?

_____ COLOR

AUGUST 13 ONLY

TRUCKS N' STUFF

Dimond Park
Saturday
August 13
2 - 5 p.m.



ASK STAFF FOR A STAMP HERE!

DIMOND PARK

MARINE PARK

What are the two bicycle racks shaped like?

_____ SHAPE

_____ SHAPE

FREE admission to either:
Turf for Tots (ages 0-6) or
Track (ages 6+). 9 laps = a mile!



ASK FIELD HOUSE STAFF FOR A STAMP HERE!

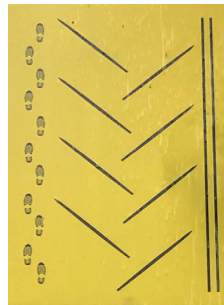
Hours: 9 a.m. - 1 p.m. T, W, Th

MELVIN PARK

Each field is identified by a painted number on the dug out. Match the number to its color.

- 1 BLUE
- 2 GREEN
- 3 RED

MONTANA CREEK TRAIL



Find this sign along the trail then draw the missing tracks.

Donate a non-perishable food item to their food drive.



ASK STAFF FOR A STAMP HERE!

Hours:
1 - 8 p.m. M-F
3 - 10 p.m. Sat



Show your Passport for a FREE Public Skate. Up to two guardians can skate, too!

ASK A RINK ATTENDANT FOR A STAMP HERE!



AUGUST 20 ONLY

COMMUNITY DAY



Amalga
Meadows Park
Saturday
August 20
12 - 3 p.m.

AMALGA MEADOWS

Show your Passport for FREE admission. Up to two guardians are FREE, too!



How old is the Jensen-Olson Arboretum?

_____ YEARS

WEST JUNEAU ROTARY PARK

Have a picnic at the park! How many picnic tables do _____ you see? TABLES

Explore the beach along the Rainforest Trail.
Tip: This is especially fun during low tide!

Submit a photo of your adventure and receive two (2) bonus tickets!
bit.ly/monthofplay2022bonus

BONUS ACTIVITY!



To receive tickets for completing the activities in the passport, your passport must be submitted online or in-person by August 31. Drawing will take place on Friday, September 2 in the Parks & Recreation office. Winners will be notified by email/phone and announced on Facebook.

SUBMIT YOUR PASSPORT BY AUGUST 31

Earn two (2) bonus tickets in the drawing by submitting a photo from the bonus activity. Photos should be submitted online by August 31 at bit.ly/monthofplay2022bonus.

BONUS TICKETS

- ONLINE:** Upload a photo of your Passport and staff will add your ticket(s) to the bin. If eligible, an admission pass will be mailed to you. Submit your passport at bit.ly/monthofplay2022passport.
 - 1. Choose a prize from the prize box!
 - 2. Add your ticket(s) to the drawing
 - 3. Receive your Admission Pass (if eligible)
- IN-PERSON:** Bring your Passport to the Parks & Recreation office in City Hall. Office Hours: 8 a.m. - 4:30 p.m. M-F.

SUBMIT YOUR PASSPORT

1 SUCCESSFULLY COMPLETED ACTIVITY = 1 TICKET
COMPLETE 10+ ACTIVITIES AND RECEIVE AN ADMISSION PASS!

Answer the questions, collect the stamps, and attend in-person events during the Month of Play. Activities are free and the more activities you complete the greater your chances of winning some awesome prizes!



PASSPORT TO PLAY!