

Montana Creek Recreation Area Master Plan

Community Meeting

August 10, 2022

5:30pm

Agenda

1. Introductions and Land Management Intent by CBJ, USFS, DNR, DOT, Trail Mix
2. Project Background, Process and Goals
3. Themes
4. Draft Plan
5. Next Steps

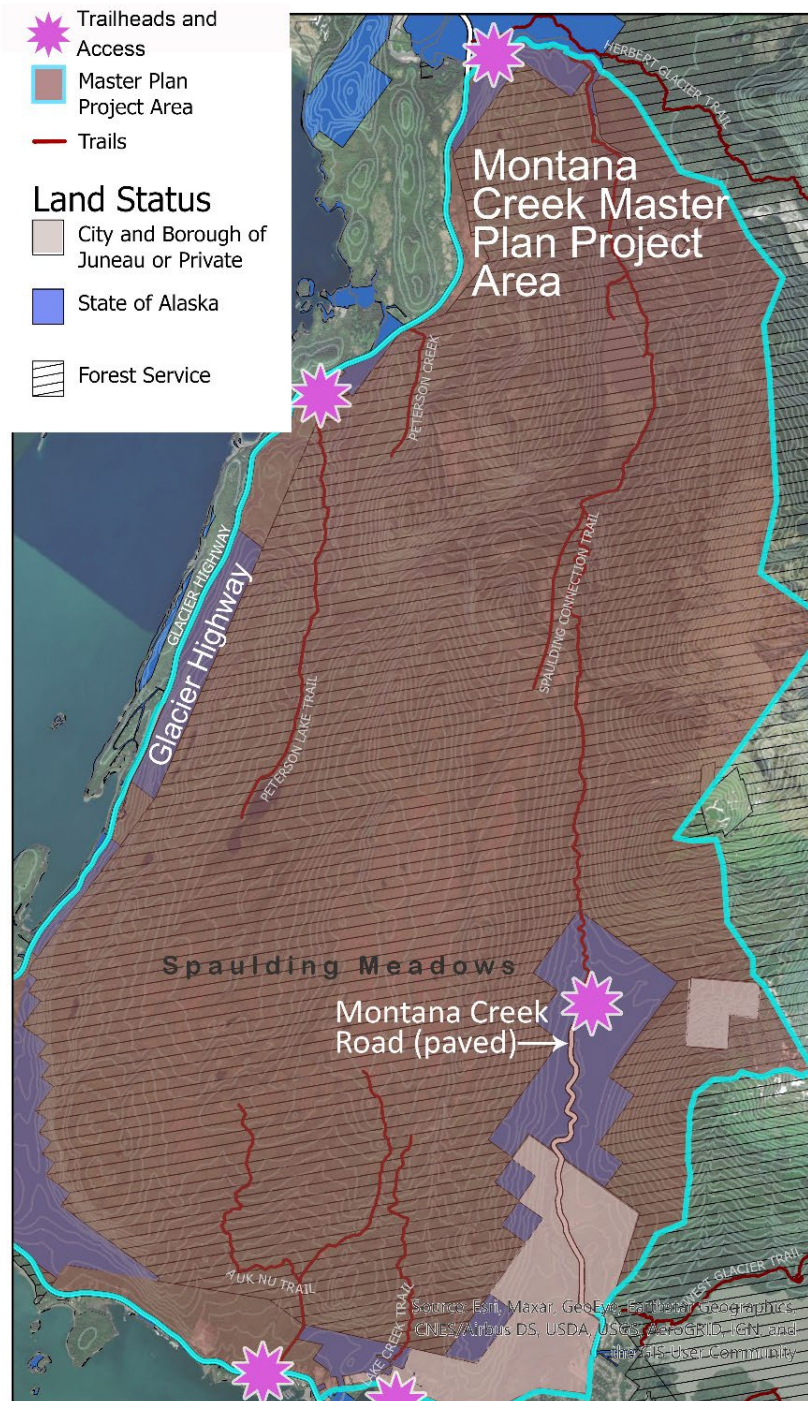


Land Management

United States Forest Service Land Management

2016 Tongass Land and Resource Management Plan

- Semi Remote Recreation
- Opportunities for independence, closeness to nature, self-reliance requiring challenging motorized or non-motorized transportation
- Interactions between users are infrequent
- Minimal facilities, rustic in appearance

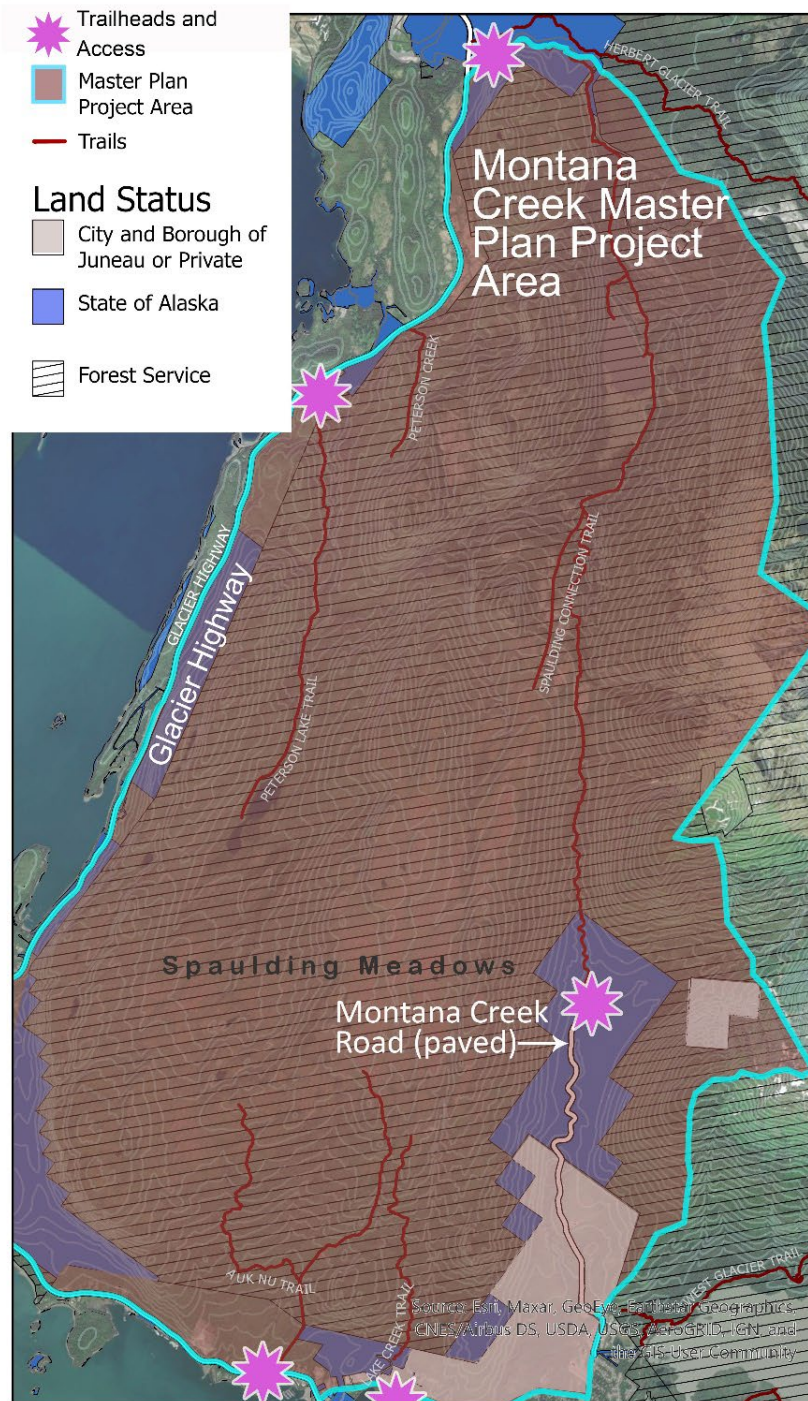


Land Management

State of Alaska Department of Natural Resources

Juneau State Land Plan, 1993

- Managed for high recreation, habitat and harvest values
- Primarily recreation, wildlife habitat, wild harvest, water resources uses
- Recommends transfer of management of some land in the Montana Creek valley to CBJ

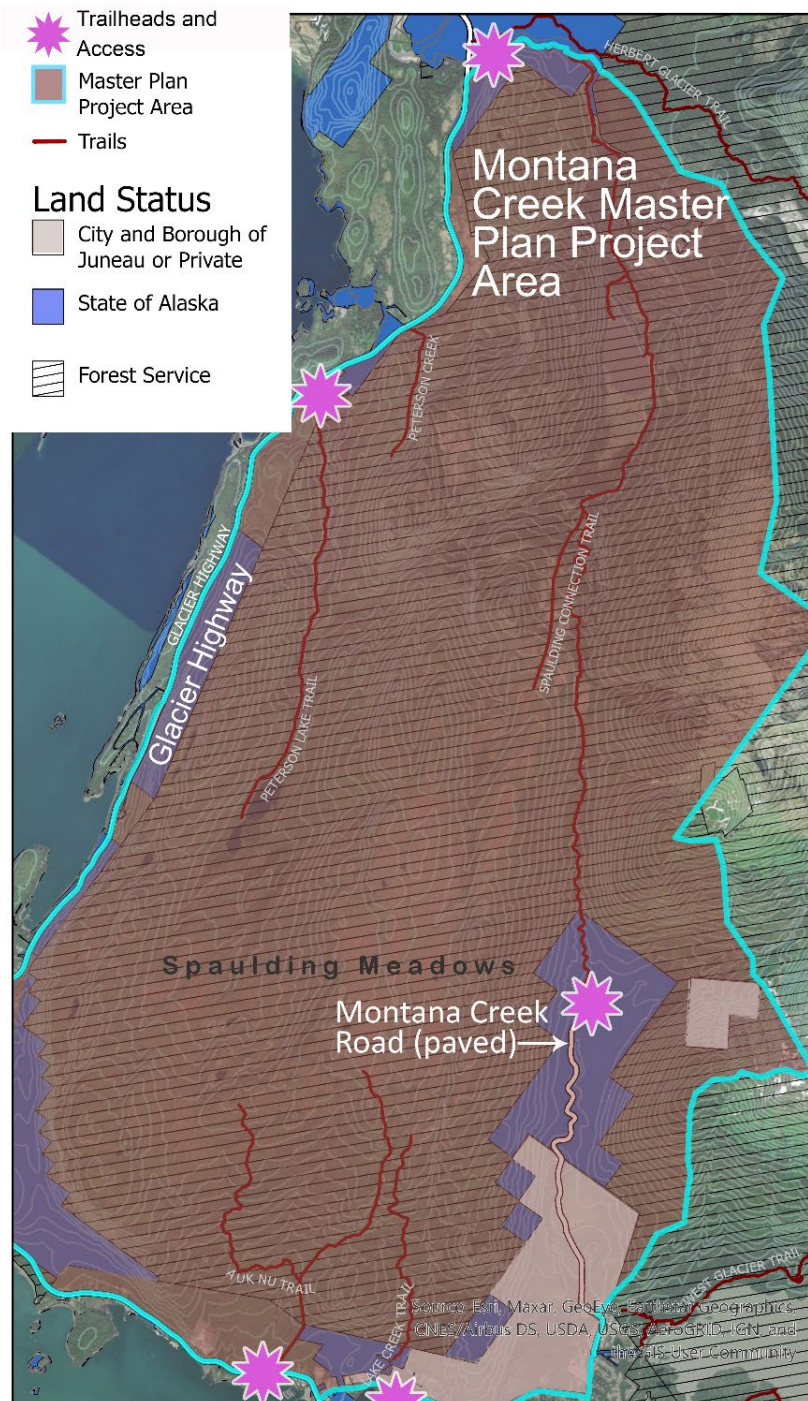


Land Management

City and Borough of Juneau

Parks and Recreation Master Plan, 2019

- Natural Area Park, Conservation Area
- Provides open space, access to water and opportunities for passive and dispersed recreation
- Recognized for high value environment
- Intent is to protect and manage the natural environment with recreation as a secondary objective



Project Background

Fall 2020

Request to close Montana Creek Road to motorized use in the winter for non motorized winter recreation.

The Parks and Recreation Department received 827 written comments about this issue both opposed and in favor.

The Parks and Recreation Advisory Committee (PRAC) voted in support of maintaining motorized use on the road.



Project Background

2020-2021

The public suggests many ideas for Montana Creek area including:

- Biathlon Range
- New Motorized Trails on State Land
- New Trails throughout project area
- New Cabins
- More Parking

CBJ, DNR, USFS, DOT, and Trail Mix start meeting about cooperative planning for the recreation area and set a project area boundary



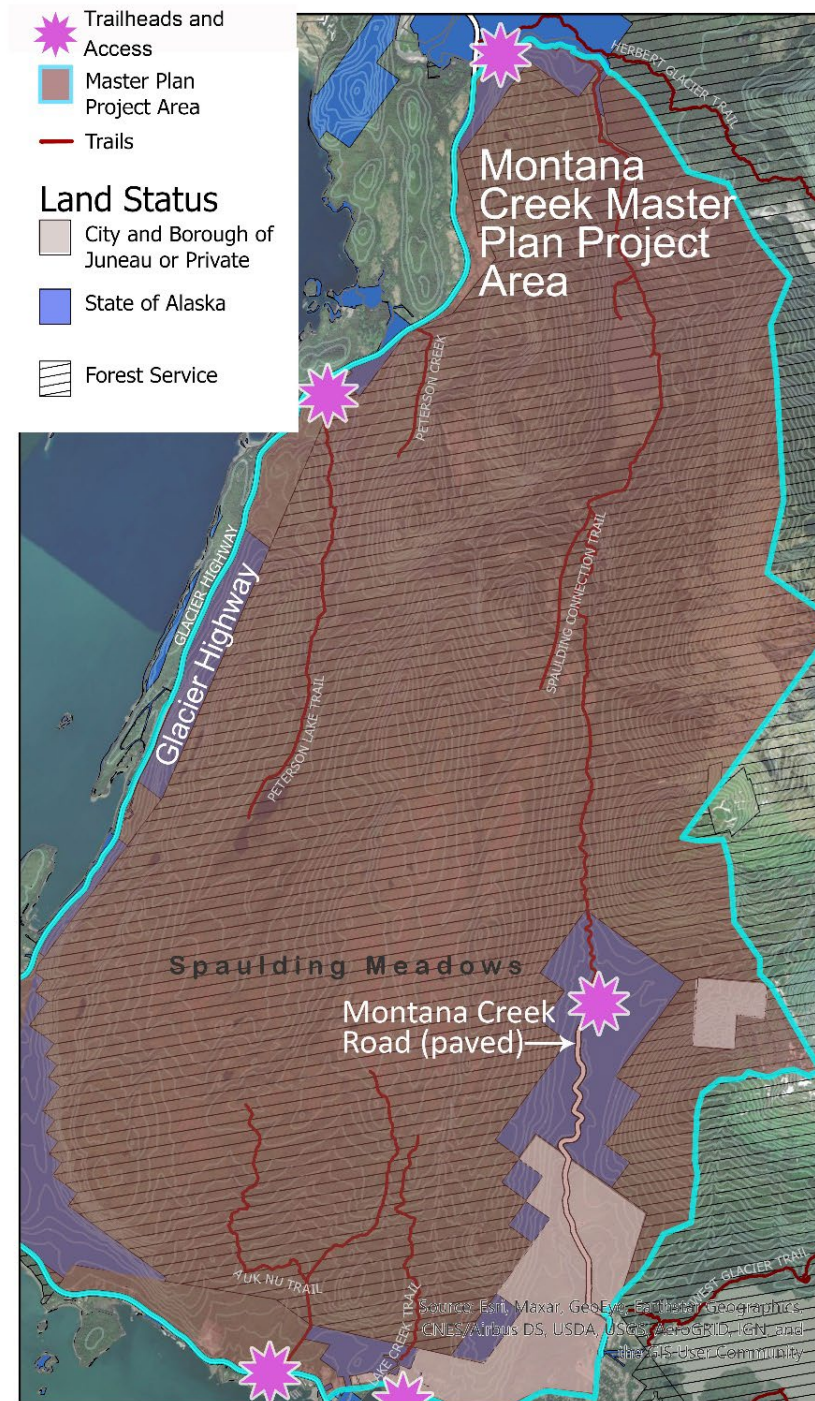
Photo Credit – JNSC Facebook Page

Project Goals

Create a master plan for the next ten years through a public process.

Identify recreational facilities to meet public needs.

Coordinate planning and management across land managing agencies, CBJ, DNR, USFS, and DOT.



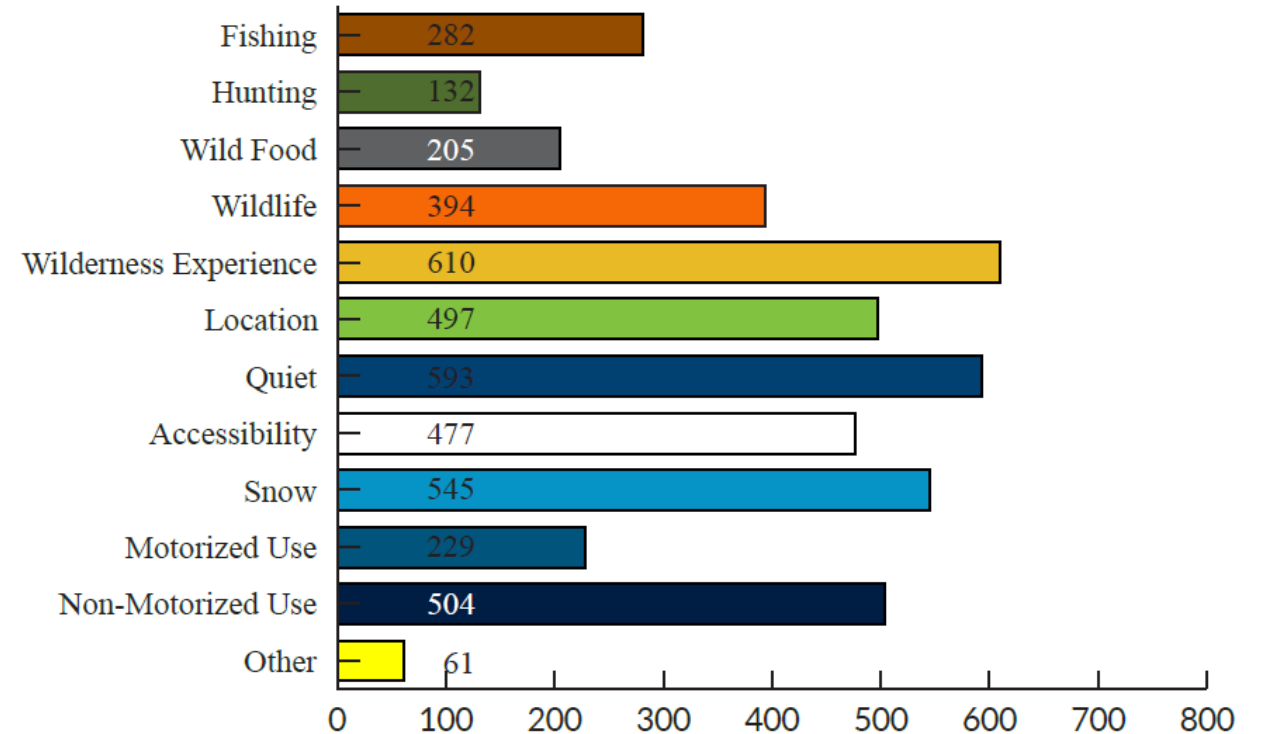
Public Outreach

Survey Results

Challenges

- Complex land management and regulation
- Safety concerns including bears, natural disasters, trail conditions, existing recreation, criminal behavior
- Feels remote
- User conflict, lack of trust
- Diverse ideas on shared, separated, exclusive use of the area

Values



Public Outreach

User Group Meetings Fall 2021

Central Council Tlingit Haida

Douglas Indian Association

Sealaska Heritage Institute

Goldbelt Heritage

Discovery Southeast

Juneau Nordic Ski Club

Youth Nordic Ski Team

Lynn Canal Adventures

Juneau Mountain Bike Alliance (JMBA)

Juneau Trail and Road Runners

Juneau Alpine Club

Juneau Snowmobile Club

Juneau Off-Road Association (JORA)

Southeast Jeep Club

Hank Harmon Public Range (HHPR)

Juneau Archery Club

Territorial Sportsmen

Trout Unlimited

Southeast Alaska Independent Living (SAIL)

Southeast Alaska Watershed Coalition (SAWC)

Southeast Alaska Conservation Council (SEACC)

Public Outreach

Themes from Survey and User Group Meetings

Connections

- Trails to facilities such as Mendenhall Glacier Recreation Area
- Montana Creek Trail from Backloop Road to project area
- Loop Trails

Access

- Expanded parking and trail connections
- Improve passage on difficult terrain (river, ridge, wetland)
- Extend Lake Creek Road to Spaulding Meadow
- More motorized access
- More Nordic Ski groomed trails

Shelters, Cabins, Camping and Day Use

Kids, Families, and Subsistence

- Support subsistence activities and recognize that cultural and natural uses are intertwined, don't draw a line between developed and undeveloped
- Safe recreation free from user conflicts

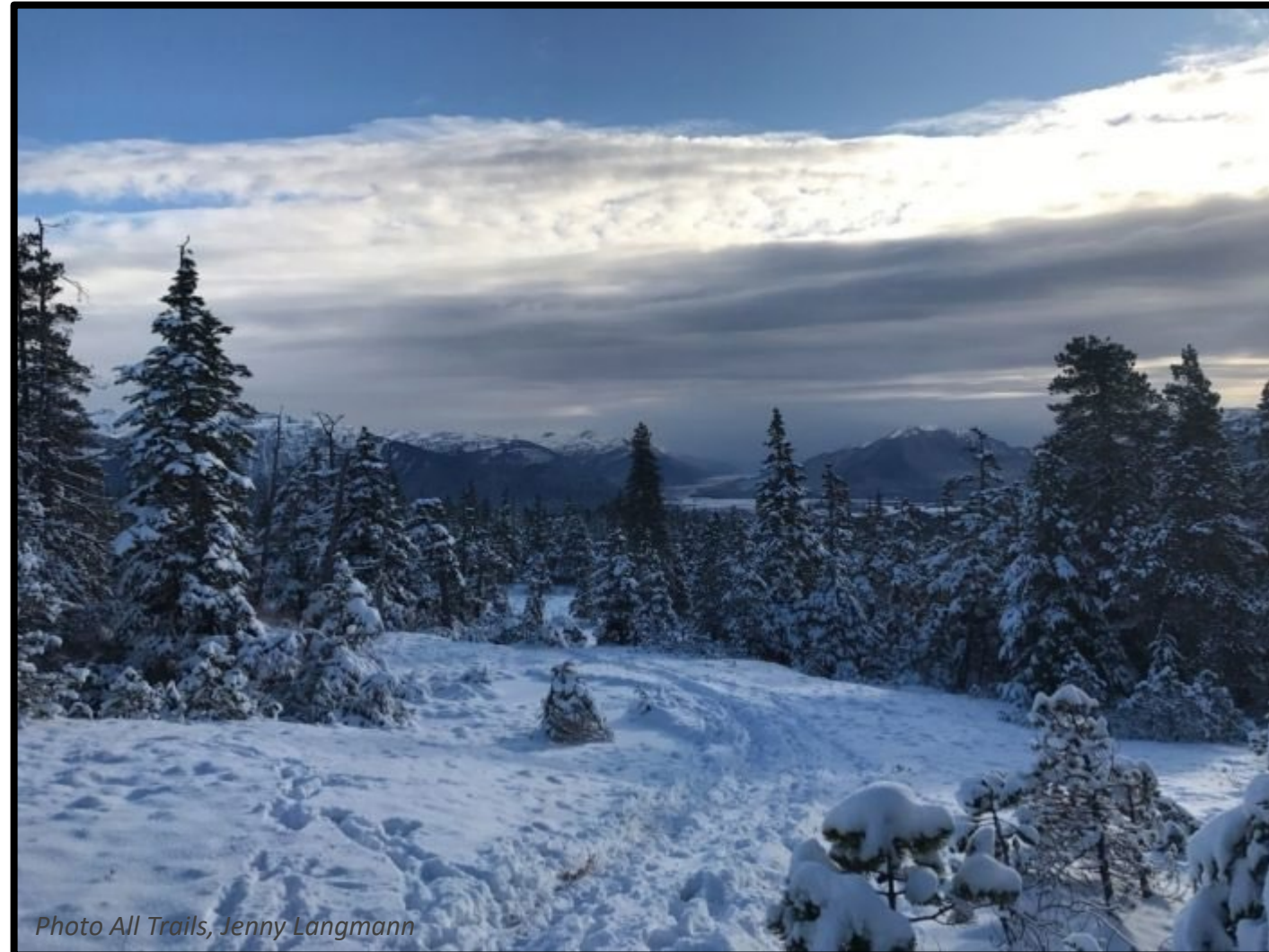


Photo All Trails, Jenny Langmann

Public Outreach

Themes from Survey and User Group Meetings

Maintenance and Rules

- More durable construction and materials
- Clear Rules, Signage and Enforcement

Separated and Shared Use of trails

Environmental Protection

- Very sensitive habitat
- Minimize impact of built structures
- Consider impacts of trails and development in riparian areas
- Relocate trails when possible away from riparian areas

Support Archery, Fishing, Hunting and Shooting

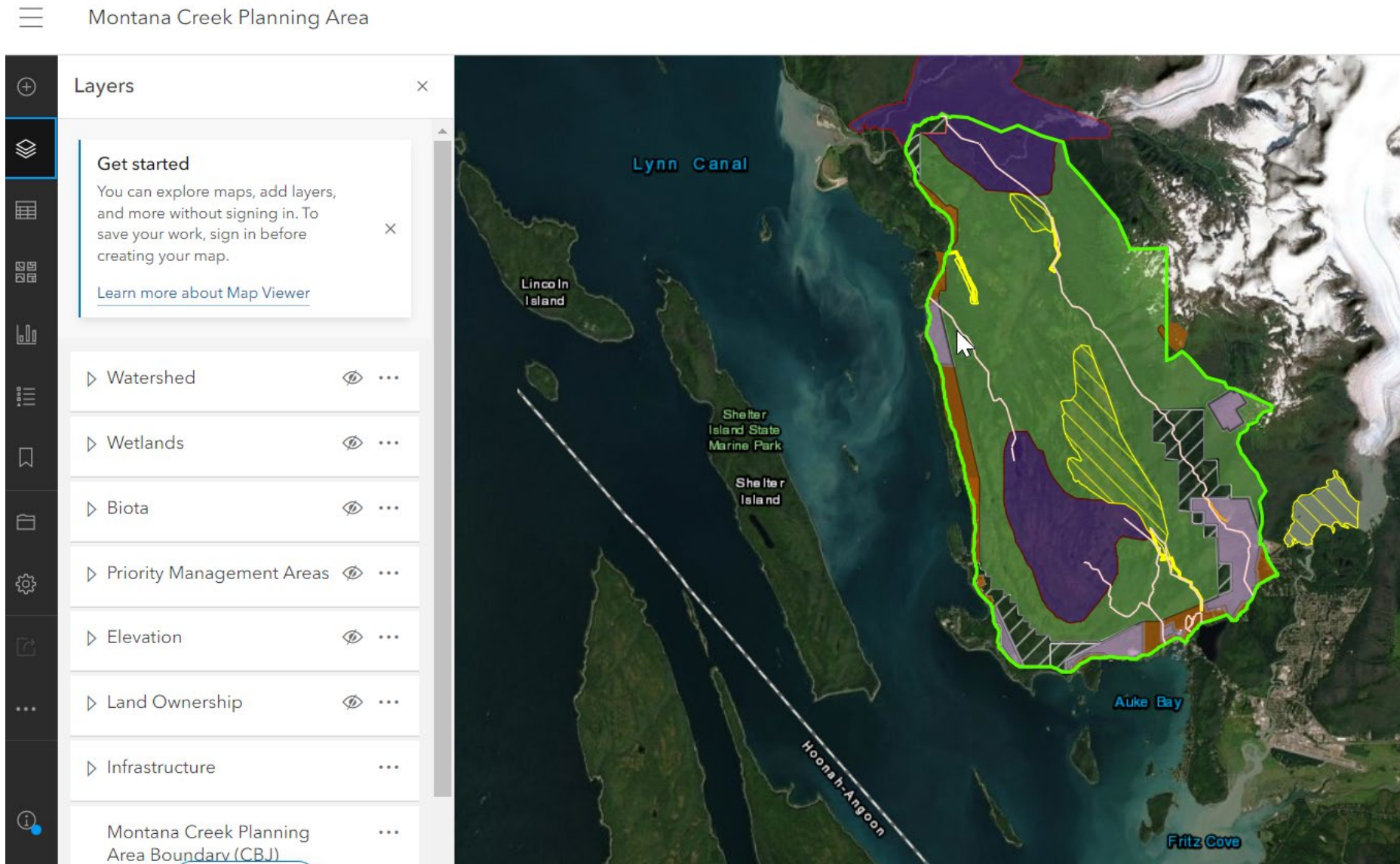


Data Gathering

Developed a public access GIS database of resource data.

Available on the project webpage:


<https://juneau.org/parks-recreation/project-list/entry/77110>



Data Gathering

THE JUNEAU TRAILS PLAN

FINAL PLAN



A COOPERATIVE PLANNING EFFORT
JANUARY 1993

2019
2029

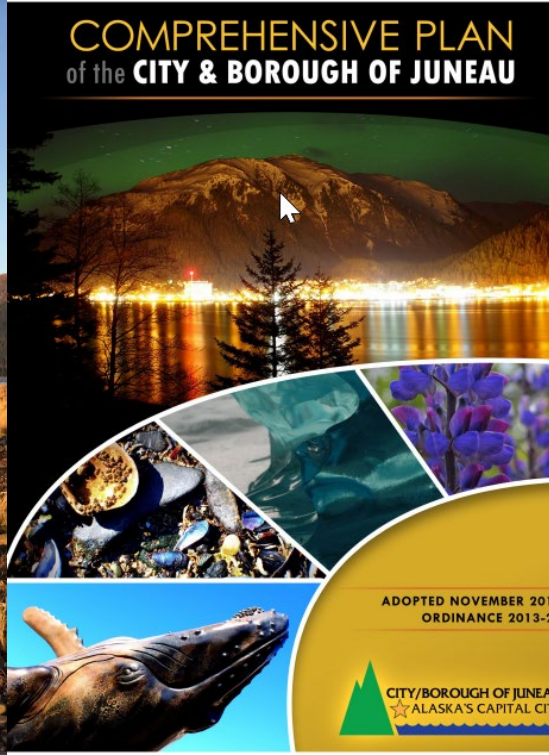
**Parks & Recreation
Master Plan**

[Click here to open PDF.](#)



**CITY AND BOROUGH OF
JUNEAU**
ALASKA'S CAPITAL CITY

**COMPREHENSIVE PLAN
of the CITY & BOROUGH OF JUNEAU**



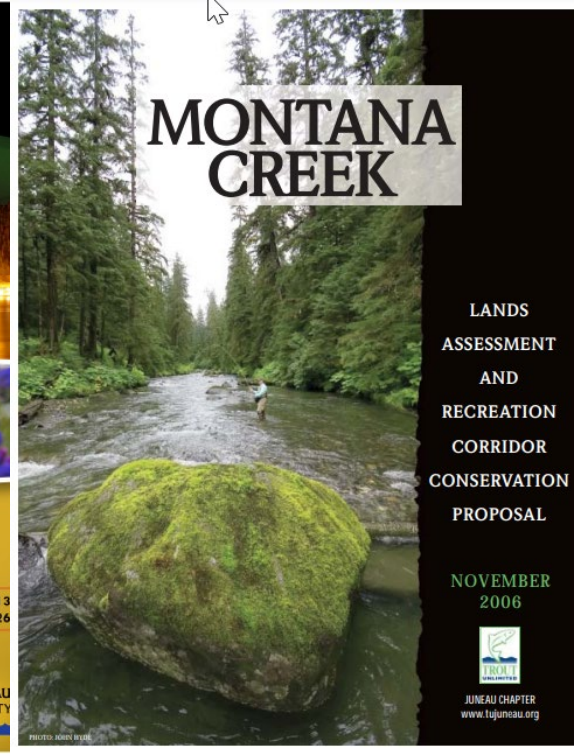
**ADOPTED NOVEMBER 2013
ORDINANCE 2013-26**

**CITY/BOROUGH OF JUNEAU
ALASKA'S CAPITAL CITY**

MONTANA CREEK

LANDS
ASSESSMENT
AND
RECREATION
CORRIDOR
CONSERVATION
PROPOSAL

NOVEMBER
2006



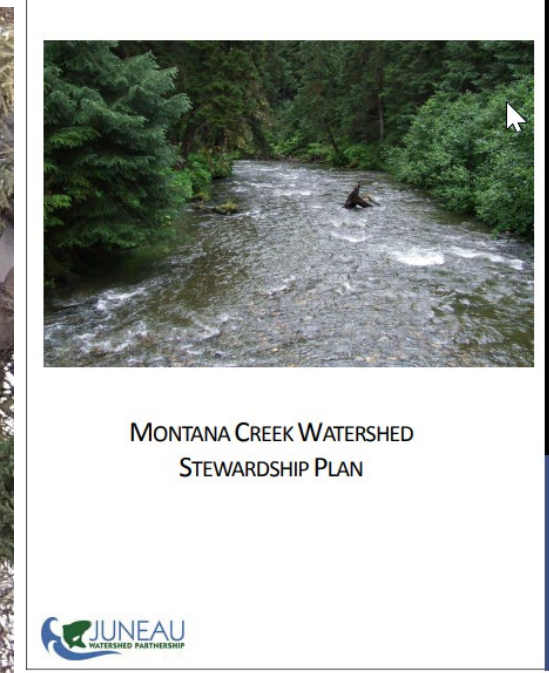
JUNEAU CHAPTER
www.tujuneau.org

**Kaxdigoowu Heen
watershed
scoping, 2010
updates, 2019&20**

*Richard Carstensen
Discovery Southeast*



2015



**MONTANA CREEK WATERSHED
STEWARDSHIP PLAN**

**JUNEAU
WATERSHED PARTNERSHIP**

**JUNEAU
STATE LAND PLAN**

ALASKA DEPARTMENT OF NATURAL RESOURCES
DIVISION OF LAND
RESOURCE ASSESSMENT & DEVELOPMENT

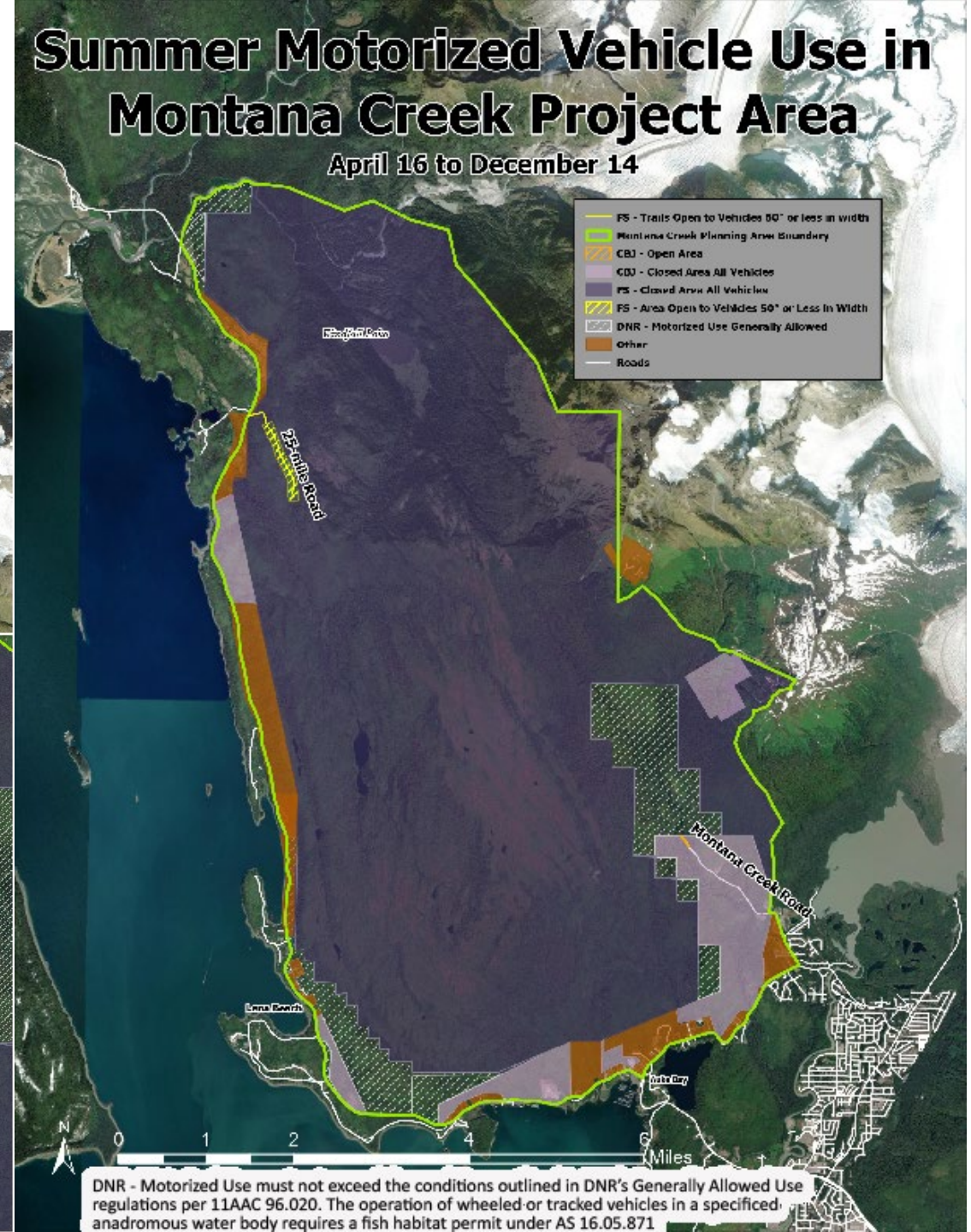
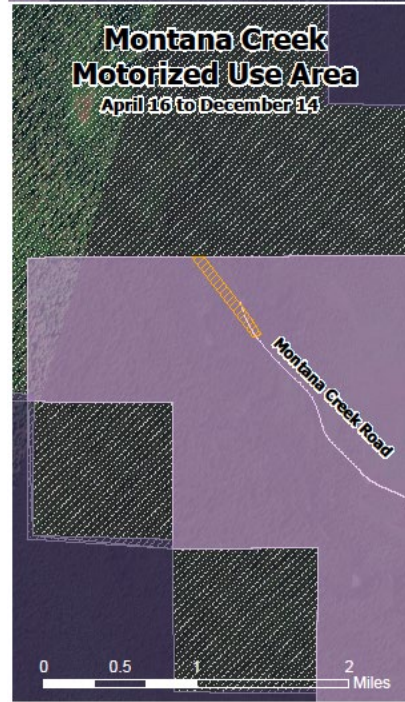
DECEMBER 1993

Data Gathering

Existing Regulations Motorized Use

Summer
April 16 - Dec 14

*USFS, CBJ and DNR
each have different
regulations for use on
their land*

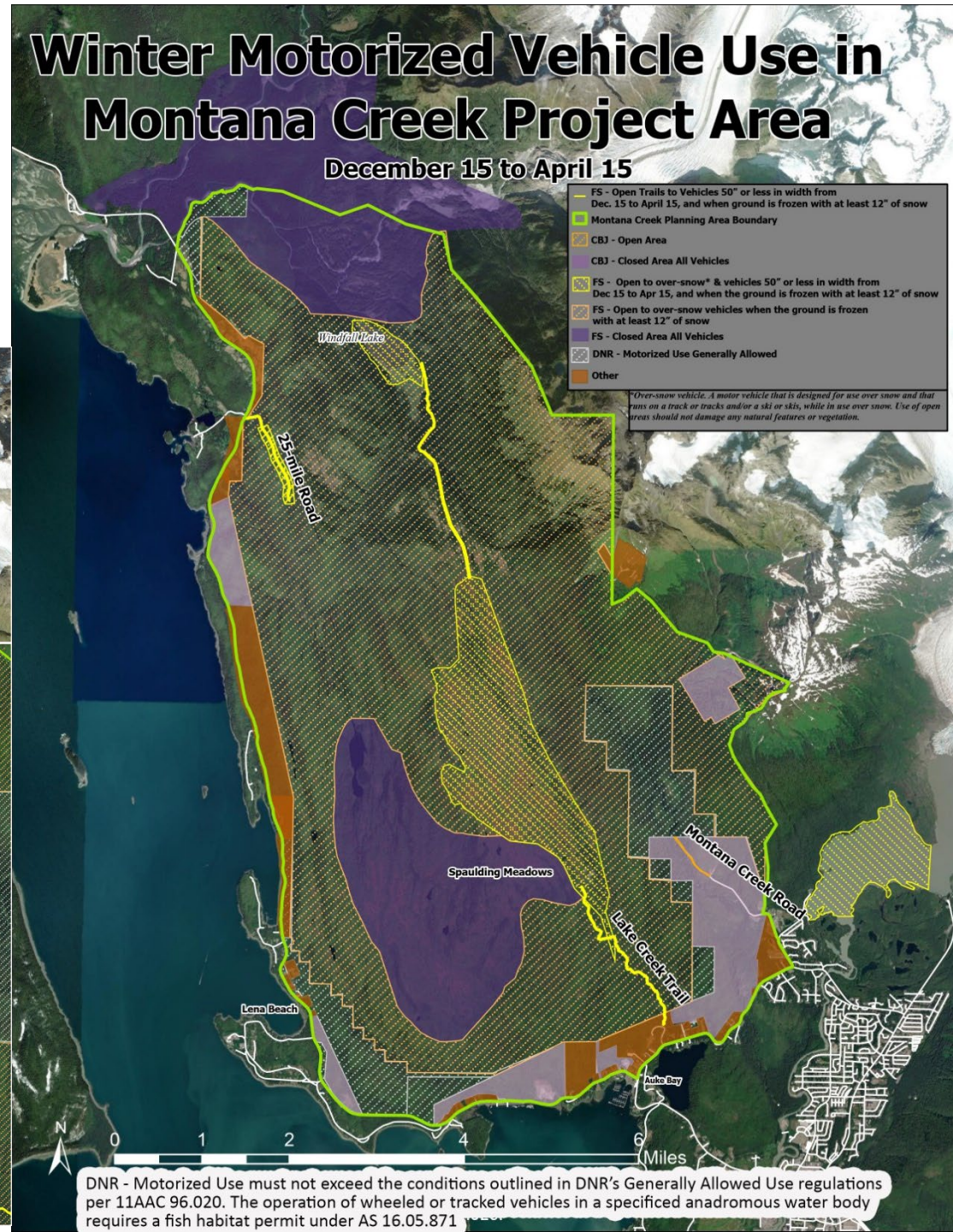
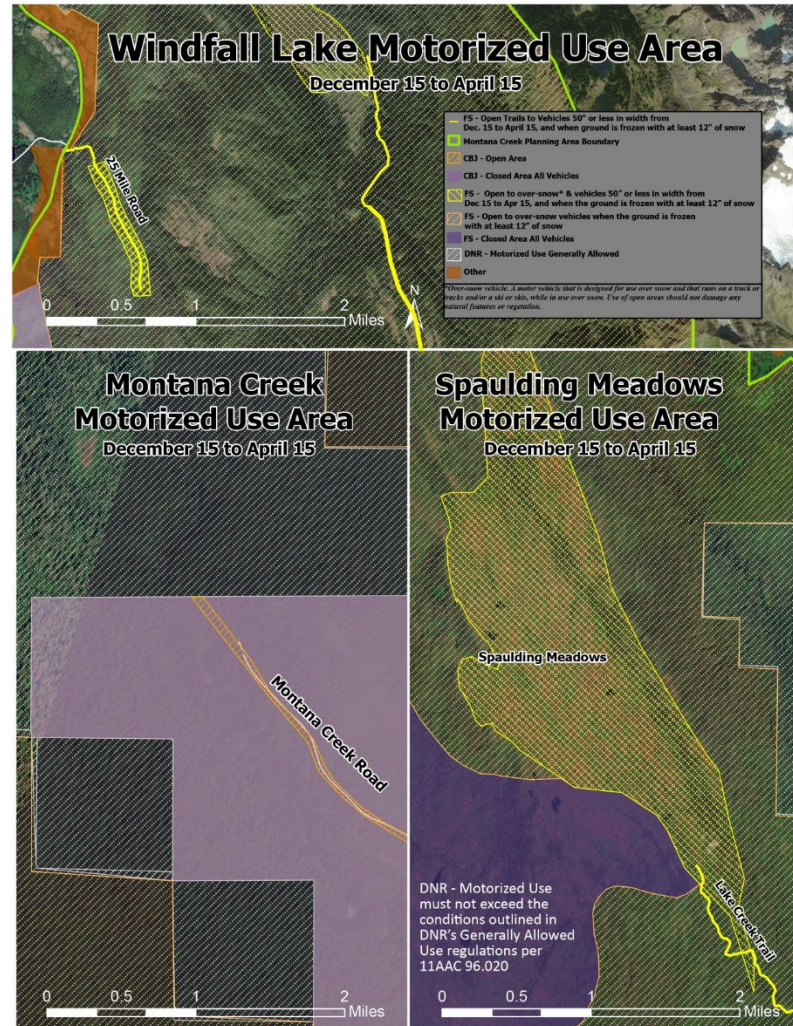


Data Gathering

Existing Regulations Motorized Use

Winter
Dec 15 – April 15

*USFS, CBJ and DNR
each have different
regulations for use on
their land*



Drafting a Plan

Input from August 2021 to August 2022:

- Public Survey Data and Comments
- User Group Meetings
- Resource Mapping
- Existing Plans
- User Group Design Workshop
- Agency Meetings



Photo by Trail Mix

Draft Plan – Winter Use*

Assumes no change in regulations

Improved Parking and Access into the Area

Loop trails

Hut to Hut system

Create Unified Signage System with Clear Regulations

Motorized Uses

Winter- Connects Lake Creek to 25 Mile Road with access to 3 cabins

Summer – Existing use under current regulations on Montana Creek Road, DNR land and 25 Mile Road

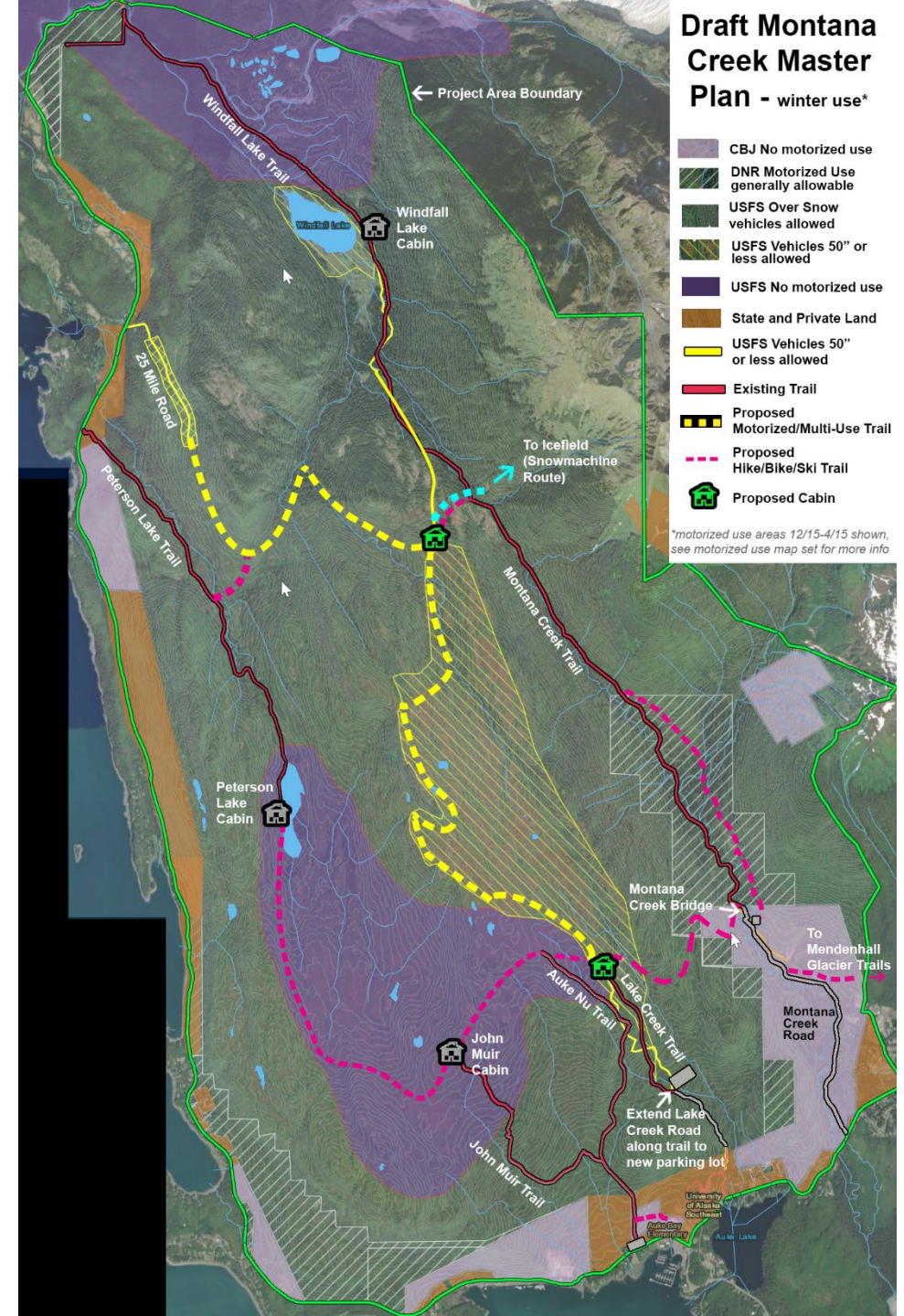
Non – Motorized uses

Winter- Creates parallel trail along Montana Creek Road and Trail dedicated to non-motorized use

Connects 5 cabins by trails via dedicated non motorized trail and shared use trail

Summer – Trails continue to be available for use

<https://juneau.org/parks-recreation/project-list/entry/77110>



Draft Plan – Winter Use*

Assumes no change in regulations

Access

Extend Lake Creek Road for vehicles to a new higher elevation parking area to extend seasonal use of meadow area

Increase parking at major entrances to area

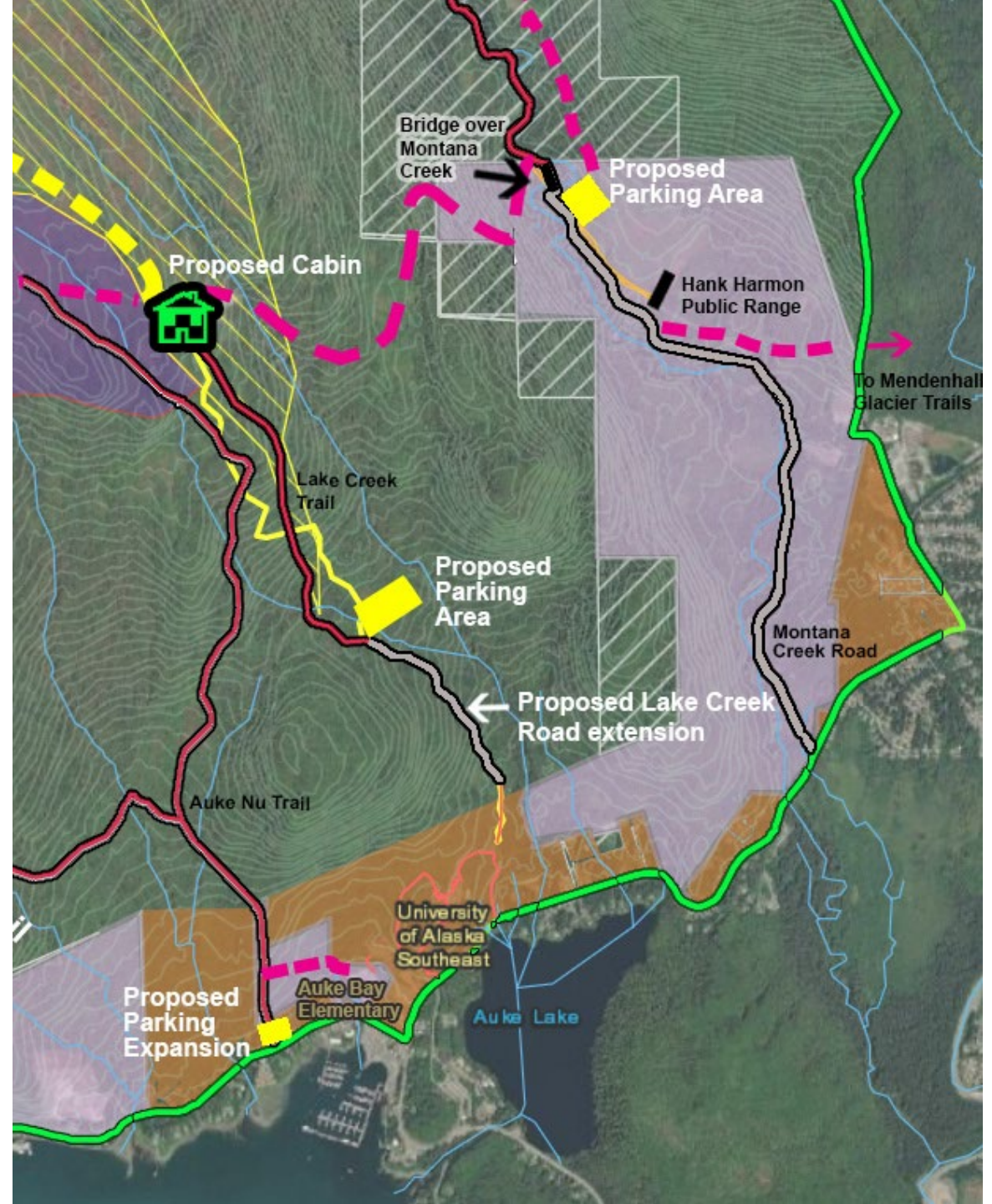
Make connections to other facilities including Mendenhall Glacier Recreation Area and Auke Bay Elementary

Environment

Move existing trails out of riparian area of creek where possible, keep new trails away from creeks

Keep facility development footprint minimal

Protect subsistence areas and activities



Questions?

Please submit **Questions** in the Q&A box below.

Written **comments** will be accepted on Draft Plans at Parks.Rec@juneau.org until September 10, 2022 at 5pm.



Comments and Next Steps

This is a Draft Plan, we need your comments and ideas to develop the plan.

Please send comments to Parks.Rec@juneau.org until September 10, 2022 at 5pm.

This slideshow and all of the background data presented on the project are located here:

<https://juneau.org/parks-recreation/project-list/entry/77110>

Thank you for your participation!

