



Docks & Harbors The Tide Line March 2022



Docks & Harbors Meetings

*All meetings will be
conducted via Zoom*

Finance Sub-Committee

Wednesday
March 9th
At 5:00 pm

Finance Sub-Committee

Tuesday
March 22nd
At 5:00 pm

Operations/Planning

Wednesday
March 23rd
At 5:00 pm

Regular Board

Thursday
March 31st
At 5:00 pm

Meetings
agendas and minutes
can be found at:
<https://bit.ly/3aRyTAD>

Port Director's Corner: As we transition into the spring, there are many happenings within Docks & Harbors worth mentioning. Firstly, we continue to solicit for new seasonal hires to support what, by most accounts, will be a busy summer along our Juneau waterfronts. Please encourage individuals looking for seasonal employment to strongly consider CBJ Docks & Harbors. The open positions are advertised at <https://juneau.org/human-resources/employment-opportunities>. As detailed in the February TIDE LINE, many of our openings are highly flexible, and in general, if you are willing to work (and are qualified) - we'll be able to find a schedule to meet your personal lifestyle.

Amendment to Long Range Waterfront Plan: The Assembly will take up an ordinance amending the LRWP at its March 14th regular meeting. The result of this Assembly decision will advance the plan from Norwegian Cruise Lines (NCL) to construct a new vessel berth in the vicinity of the Subport. Interested members of the public can submit comment to the Assembly at BoroughAssembly@juneau.org. There will also be an opportunity to provide public testimony at the March 14th Assembly meeting as part of the public hearing.

Regulation Changes: At the February 28th Assembly meeting, changes to Dockage Fees and a CPI (Consumer Price Index) linking most Docks & Harbors fees to annually adjust to the Urban Alaska - CPI was approved. Although some fees are adjusted on a calendar year basis, the implementation for most of these fees will commence on July 1st, 2022, which is the start of the Fiscal Year. The largest revenue generator for the Harbors Enterprise is the small boat moorage fees, which have been subject to CPI increment since its inception in 2007.

2022 Juneau ship schedule: The 2022 Juneau Cruise ship schedule is available at www.claalaska.com. Additionally the 2023 DRAFT schedule can be found at the same website. This is an attempt to be more transparent in advance as conditions allow, as was a recommendation of the Visitor Industry Task Force. We thank CLIA and CLAA for providing these updates.

TBMP 2022 Guidelines: The revised set of 2022 guidelines will be sent out on March 4th. There are very few changes from what was proposed after the 2019 season. Kirby Day will also send a list of substantive changes for 2022. Most modifications are grammatical in nature so I will not include those. The link for the 2022 guidelines will also be on the TBMP website www.tbmp.info in the coming days. [Thank you Kirby for sharing this and other information for use in this month's TIDE LINE.]

CBJ South Franklin Street stanchion project: CBJ Engineering will continue the pedestrian stanchion project this spring which will extend on both sides of South Franklin Street from the round-about in front of the parking garage to the Del Sol building at People's Wharf. This expands efforts to manage pedestrian traffic in the area, guide visitors and local residents to the crosswalks, and create a safer environment for both drivers and pedestrians.

CBJ Docks and Harbors permits: All businesses will need to be an active member of TBMP when applying for Docks and Harbors permits, including downtown and at Statter Harbor—loading zones, passenger for hire, special use permits which all require participation in TBMP. Permit applications can be found online at <https://juneau.org/harbors/applications-forms>. The permit process can take up to seven days so please plan ahead.

Docks & Harbors Annual Pre-season Meetings: Tour Broker operations, Statter Harbor, Peratrovich Plaza, Marine Park, Cruiseship Terminal, and the Columbia/Tram Lot policies and procedures for vehicles and vessels for the 2022 season will be provided by Docks and Harbors. Docks and Harbors preseason meetings are scheduled April 19th, 9am-1pm in Assembly Chambers. Please note these are required meetings by both Docks and Harbors and TBMP for at least one member of your related tour business to attend.

Bring a copy of the 2022 TBMP guidelines if you like for reference. Finally, please plan to sign up for TBMP at the meeting if you have not done so already.

Vendor Booth Permittees: 9:30 am - 10:00 am
Loading Zones - 10:00 am-11:00 am
Statter User Groups/TBMP overview - 11:00 am-1:00 pm

Friends of the Flags: TBMP and Travel Juneau have taken over the responsibility for hanging the state flags along Egan Drive (and taking them down after the season). They will be planning to hang the flags again in 2022, probably in early May. Stay tuned! We will need around 10-12 volunteers so TBMP will be reaching out in the spring for assistance. We will need help for both preparation of the flags and the hardware (a Friday 4p-6p), as well as on the day we put up the flags - a Sunday morning 7am-10:30am.

Office Hours:

Port Office

907-586-0292

Monday - Friday

8:00am - 4:30pm

Port/Field Office

907-586-5720

Closed for winter

Aurora Harbor

907-586-5255

Monday - Friday

8:00am - 4:30pm

Statter Harbor

907-789-0819

Monday - Friday

8:00am - 4:30pm

All Offices

Closed 12-1 for

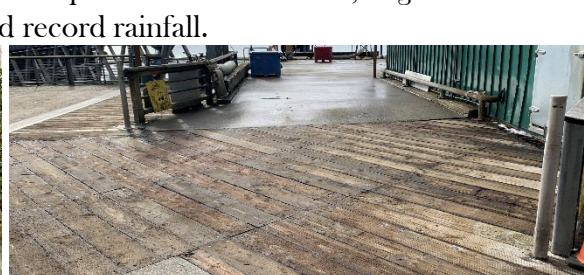
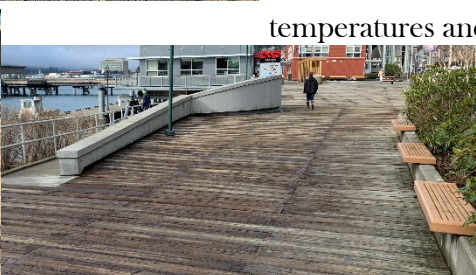
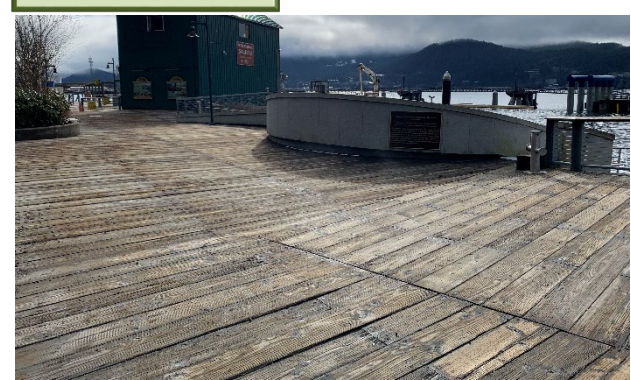
lunch

Help stop theft in our Harbors! If you see something, say something. Call suspicious activity to JPD Non-Emergency Line at 907-586-0600 and report to the Harbor Office at 907-586-5255.

D&H encourages electronic statements to make online bill pay at juneauharbors.com faster and easier! Please send an email to harbormaster@juneau.org to request electronic statements.

Launch Ramp Permits: Are enforced on a calendar year basis. Please purchase your 2022 launch ramp permit before heading out with your vessel. It's simple to do so online at: www.juneauharbors.com

Releveling Project Taku Seawalk: After arriving on site in mid-December, Island Contractors Inc. completed their work on the Taku Seawalk Releveling Project on January 31. CBJ Docks and Harbors has re-opened the seawalk between the Fisherman's Memorial and Taku Fisheries to pedestrian traffic. The project was required due to settlement and movement of the fill material in the area had caused the old deck to sag, creating unsafe grades, trip hazards and difficulty accessing the adjacent Fisherman's Memorial and Taku Dock. Under this Contract, the uneven timber deck was pulled up and salvaged, the old deck support beams were removed and salvaged, and new fill material was added and stabilized using geotextile fabric. A new concrete footing was poured to support the seaward side of the seawalk, and the salvaged decking and decking support beams were re-installed. Roughly half of the deck boards were re-used, while damaged or short deck boards were replaced with new boards. We thank users of the seawalk for their patience during this project, as well as Island Contractors Inc. for completing the work on schedule in spite of record snowfall, negative temperatures and record rainfall.



Pictures taken by Matthew Sill