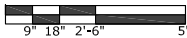


1 FOOD SERVICE PLAN



AGOSTI & ASSOCIATES
FOOD SERVICE CONSULTANTS
1901 WEST TUDOR ROAD
ANCHORAGE, ALASKA 99517
907-243-3556

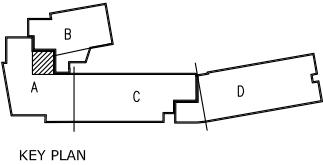
NorthWind
Architects LLC
119A 2ND ST.
JUNEAU, AK 99801
PH #907.586.6150
FX #907.586.6181
WWW.NORTHWINDARCH.COM

IF THE ABOVE DIMENSION DOES NOT
EQUAL EXACTLY 1", THIS DRAWING
HAS BEEN ENLARGED OR REDUCED,
AFFECTING ALL LABELLED SCALES

GASTINEAU ELEMENTARY SCHOOL
RENOVATION
CBJ Contract No. E11-157
JUNEAU, ALASKA

EQUIPMENT SCHEDULE			STATUS
ITEM NO	QTY	EQUIPMENT CATEGORY	
1	6	SHELVING, DRY STORAGE	D
2	1	FILTER SYSTEM, ICEMAKER	D
3	1	ICE MAKER W/ BIN	D
4	1	FREEZER, REACH-IN	D
5	1	REFRIGERATOR, REACH-IN	E
6	1	CART, UTILITY	D
7	-	- SPARE NUMBER -	-
8	1	SINK, HAND	A
9	1	BASE CABINETS WITH S/S COUNTER TOP	A
10	1	WALL CABINETS	A
11	1	WALL FLASHING	A
12	1	EXHAUST HOOD, CLASS ONE	A
13	1	RANGE, RESTAURANT, ELECTRIC	D
14	1	OVEN, CONVECTION, ELECTRIC	E
15	1	FIRE SUPPRESSION SYSTEM	A
16	1	MILK COOLER	D
17	1	CASHIER STATION	D
18	1	HOT FOOD STATION	D
19	-	- SPARE NUMBER -	-
20	2	ROLL DOWN COUNTER DOOR	C
21	1	PASS THRU COUNTER LEDGE	A
22	2	TRANSPORT CABINETS	D
23	1	GARBAGE DISPOSAL/SWITCH	A
24	1	SINK, 3 COMPARTMENT	A
25	1	POT RACK	D
26	1	WAREWASHER, UNDERCOUNTER, HIGH TEMP	A
27	1	COUNTER, PREPARATION WITH SINK	A
28	1	SHELF, TABLE MOUNTED	A
29	2	TRASH CAN	B
30	1	MICROWAVE OVEN, CONVECTION	D
31	-	- SPARE NUMBER -	-
32	1	WASHER/DRYER	B

EQUIPMENT STATUS SCHEDULE
A - BASE BID-PROVIDED/INSTALLED BY K.E.C.
B - OWNER FURNISHED/INSTALLED
C - PROVIDED/INSTALLED BY OTHERS
D - ALTERNATE BID 2-PROVIDED/INSTALLED BY K.E.C.
E - BASE BID-EXISTING EQUIPMENT/INSTALLED BY K.E.C.



SHEET TITLE:
FOOD SERVICE
PLAN AND
EQUIP. LIST
DATE: NOV. 15, 2010
REVISION:
CHECKED BY: .
DRAWN: TA
SHEET #
FS1.0

EQUIPMENT SCHEDULE																				
ITEM NO	QTY	EQUIPMENT CATEGORY	STATUS	AMPS	KW	HP	VOLTS	PHASE	DIRECT	PLUG	NEMA PLUG	COLD WATER SIZE (IN)	HOT WATER SIZE (IN)	DIRECT DRAIN SIZE (IN)	INDIR DRAIN SIZE (IN)	GAS SIZE (IN)	MBTUH	HVAC MAKE-UP CFM	HVAC EXHAUST CFM	EQUIPMENT REMARKS
1	6	SHELVING, DRY STORAGE	D																	
2	1	FILTER SYSTEM, ICEMAKER	D									1/2								
3	1	ICE MAKER W/ BIN	D	9.9		1/2	115	1	X		5-15P	1/2			3/4					FILTERED WATER; DRAIN TO FS
4	1	FREEZER, REACH-IN	D	10.4		1/2	115	1	X		5-15P									
5	1	REFRIGERATOR, REACH-IN	E	9.1		1/2	120	1	X		5-15P									
6	1	CART, UTILITY	D																	
7		- SPARE NUMBER -																		
8	1	SINK, HAND	A									1/2	1/2	1-1/2						
9	1	BASE CABINETS WITH S/S COUNTER TOP	A	20.0			120	1	X											CONVENIENCE OUTLETS
10	1	WALL CABINETS	A																	
11	1	WALL FLASHING	A																	
12	1	EXHAUST HOOD, CLASS ONE	A	15.0			120	1	X									1875		LIGHTS; 1.33" SP
13	1	RANGE, RESTAURANT, ELECTRIC	D	72.0	15.0		208	3	X											
14	1	OVEN, CONVECTION, ELECTRIC (TOP)	E	58.0	12.0	1/2	208	3	X											
	1	OVEN, CONVECTION, ELECTRIC (BOTTOM)	E	58.0	12.0	1/2	208	3	X											
15	1	FIRE SUPPRESSION SYSTEM	A	15.0			120	1	X											INTERCONNECT WITH FACP
16	1	MILK COOLER	D	9.1		1/2	120	1	X		5-15P									
17	1	CASHIER STATION	D				120	1	X		5-15P									
18	1	HOT FOOD STATION	D	25.0	3.0		120	1	X		5-50P				3/4					
19	-	- SPARE NUMBER -																		
20	2	ROLL DOWN COUNTER DOORS	C																	SEE ARCHITECTURAL DRAWINGS
21	1	PASS THRU COUNTER LEDGE	A																	
22	2	TRANSPORT CABINETS	D																	
23	1	GARBAGE DISPOSAL/SWITCH	A	5.1			208	1	X			1/2		1-1/2						WIRE SWITCH TO DISP. & SOLENOID
24	1	SINK, 3 COMPARTMENT	A									1/2	1/2	1-1/2						DRAIN THRU GREASE INTERCEPTOR
25	1	POT RACK	D																	
26	1	WAREWASHER, UNDERCOUNTER, HIGH TEMP	A	37.7			208	1	X				3/4		3/4					AIR GAP DRAIN CONNECTION
27	1	COUNTER, PREPARATION WITH SINK	A	20.0			120	1	X			1/2	1/2		1-1/2					GFI CONV OUTLETS; DRAIN TO FS
28	1	SHELF, TABLE MOUNTED	A																	
29	2	TRASH CAN	B																	
30	1	MICROWAVE OVEN, CONVECTION	D		3.3		208	1	X		6-20P									OUTLET MTD. UNDER SHELF
31		- SPARE NUMBER -																		
32	1	WASHER	B	10.0			120	1	X		5-15P	1/2	1/2		1-1/2					
	1	DRYER	B	35			240	1	X		6-50P									4" DRYER VENT

EQUIPMENT STATUS SCHEDULE
A - BASE BID-PROVIDED/INSTALLED BY K.E.C.
B - OWNER FURNISHED/INSTALLED
C - PROVIDED/INSTALLED BY OTHERS.
D - ALTERNATE BID 2-PROVIDED/INSTALLED BY K.E.C.
E - BASE BID-EXISTING EQUIPMENT/INSTALLED BY K.E.C.

KEC = KITCHEN EQUIPMENT CONTRACTOR
FS = FLOOR SINK
FD = FLOOR DRAIN
FACP = FIRE ALARM CONTROL PANEL



IF THE ABOVE DIMENSION DOES NOT EQUAL EXACTLY 1", THIS DRAWING HAS BEEN ENLARGED OR REDUCED, AFFECTING ALL LABELLED SCALES

GASTINEAU ELEMENTARY SCHOOL
RENOVATION
CBJ Contract No. E11-157
JUNEAU, ALASKA

SHEET TITLE:

FOOD SERVICE
EQUIPMENT
SCHEDULE

DATE: NOV. 15, 2010

REVISION:

CHECKED BY: .

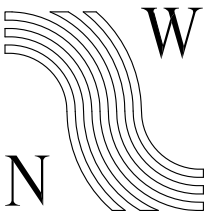
DRAWN: TA

SHEET #

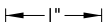
FS2.0



AGOSTI & ASSOCIATES
FOOD SERVICE CONSULTANTS
1901 WEST TUDOR ROAD
ANCHORAGE, ALASKA 99517
907-243-3556



NorthWind Architects LLC
119A 2ND ST.
JUNEAU, AK 99801
PH #907.586.6150
FX #907.586.6181
WWW.NORTHWINDARCH.COM



IF THE ABOVE DIMENSION DOES NOT EQUAL EXACTLY 1", THIS DRAWING HAS BEEN ENLARGED OR REDUCED, AFFECTING ALL LABELLED SCALES

GASTINEAU ELEMENTARY SCHOOL

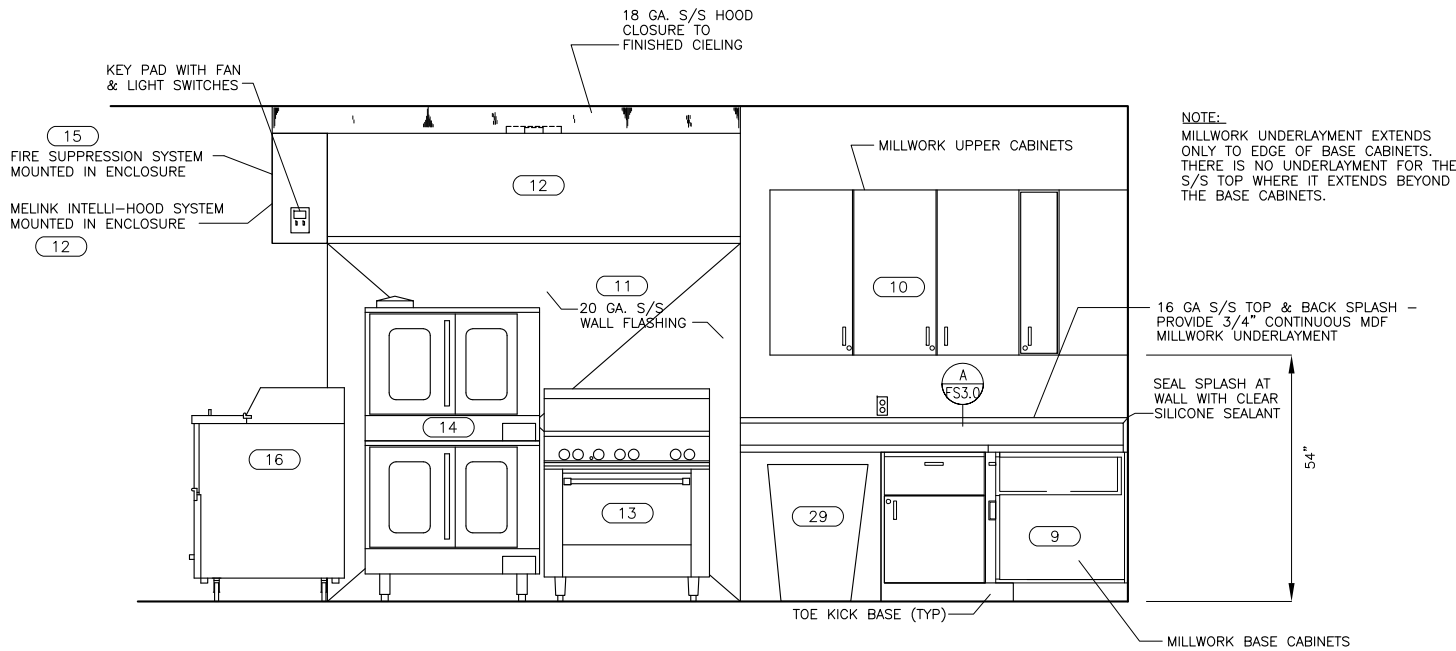
RENOVATION

CBJ Contract No. E11-157
JUNEAU, ALASKA

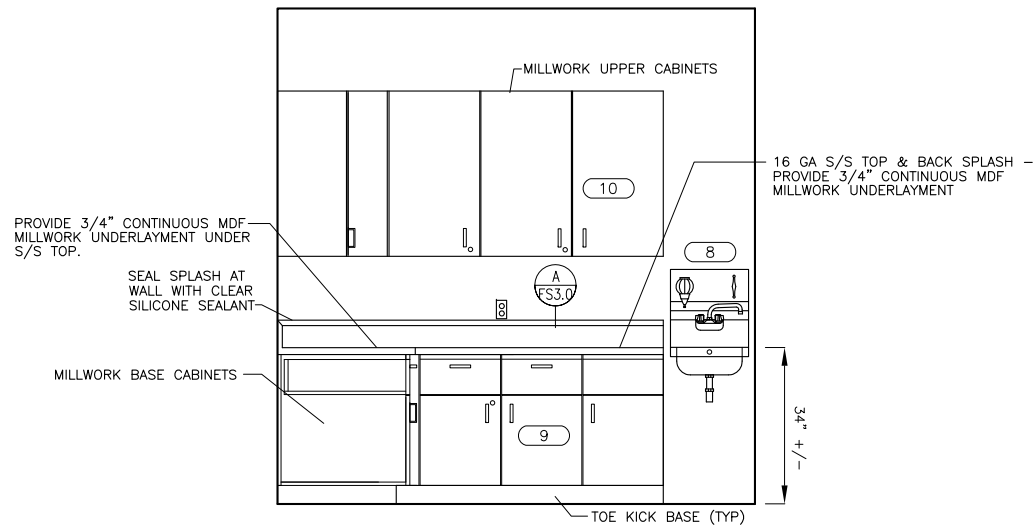
SHEET TITLE:
FOOD SERVICE ELEVATIONS

DATE: NOV. 15, 2010
REVISION:
CHECKED BY: .
DRAWN: TA

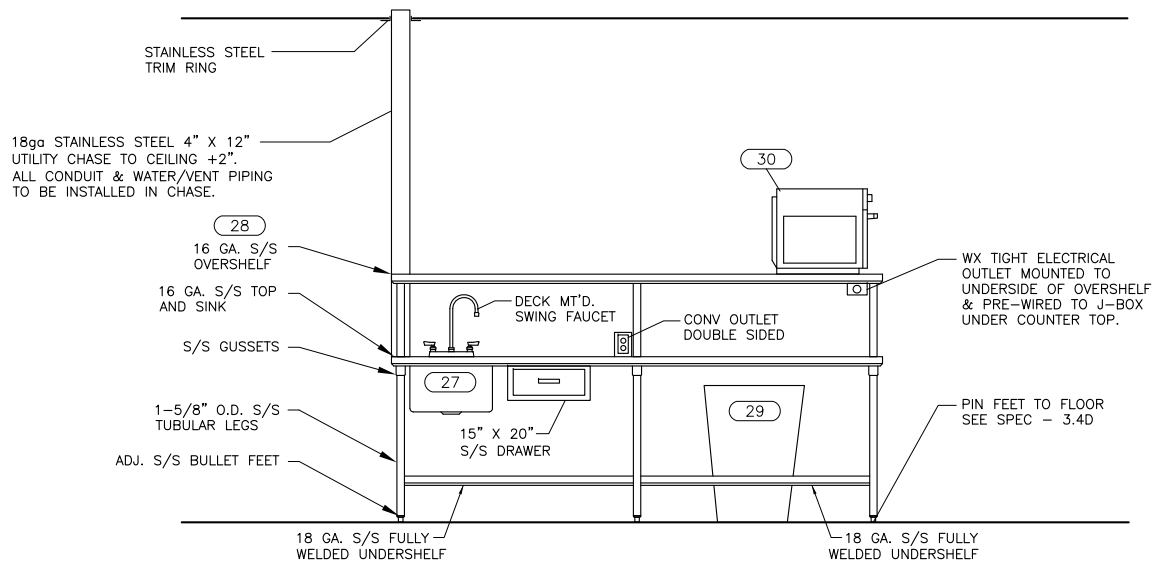
SHEET #
FS3.0



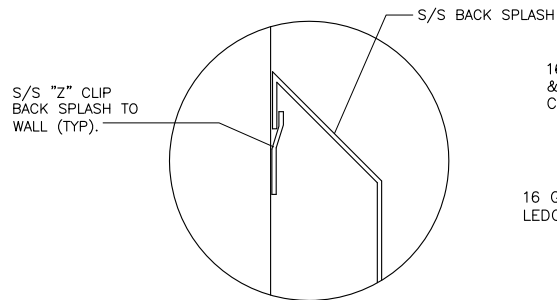
1 WEST ELEVATION
FS3.0 1/2" = 1' - 0"



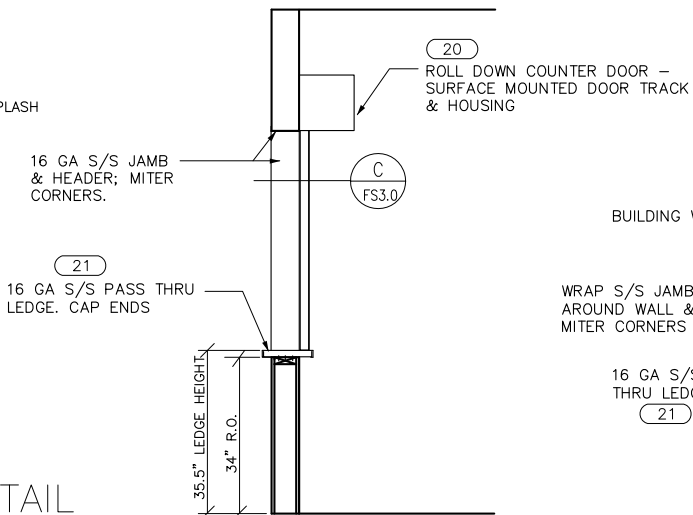
2 NORTH ELEVATION
FS3.0 1/2" = 1' - 0"



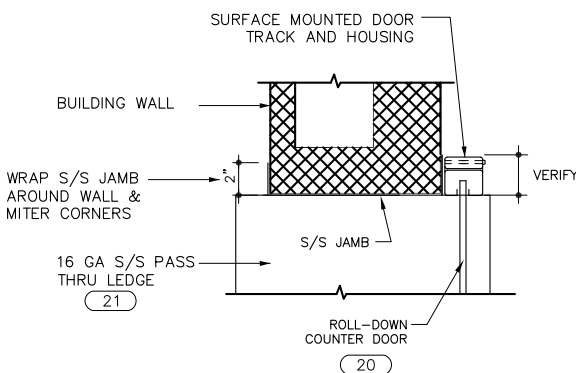
3 PREPARATION COUNTER
FS3.0 1/2" = 1' - 0"



A BACK SPLASH DETAIL
FS3.0



B PASS THRU SECTION
FS3.0 1/2" = 1' - 0"



C JAMB DETAIL
FS3.0 SCALE: NONE

