



## ADDENDUM TO THE CONTRACT

for the

### OUTER DRIVE FORCE MAIN CATHODIC PROTECTION

Contract No. BE20-082

**ADDENDUM NO.:** THREE

**CURRENT DEADLINE FOR BIDS:**

September 26, 2019

**PREVIOUS ADDENDA:** TWO

**ISSUED BY:**

City and Borough of Juneau  
ENGINEERING DEPARTMENT  
155 South Seward Street  
Juneau, Alaska 99801

**DATE ADDENDUM ISSUED:**

**September 23, 2019**

The following items of the contract are modified as herein indicated. All other items remain the same. This addendum has been issued and is posted online. Please refer to the CBJ Engineering Contracts Division webpage at: <http://www.juneau.org/engineeringftp/contracts/Contracts.php>

#### **DRAWINGS:**

Item No. 1 ***Replace*** SHEET 2 of 4 – FLANGE CONNECTION DETAILS  
***with*** the attached SHEET 2 of 4 – FLANGE CONNECTION DETAILS

By:   
Greg Smith,  
Contract Administrator

Total number of pages contained within this Addendum: 2

NOTES:

1.

ANODE WILL BE 94 LB. ALUMINUM FLUSH MOUNT ANODE (FARWEST CORROSION 94FM CORE OR EQUIVALENT).
2.

BOLTS WILL BE WRENCH TIGHT, 1-1/2 INCH X 3/8 INCH A193 GR B7. NUTS WILL BE A194 GR 2H.
3.

STUDS WILL BE 18 INCH X 1-1/8 INCH STAINLESS STEEL A320 GR B8M. NUTS WILL BE A194 GR 8M. WASHER WILL BE 316L. ~~TORQUE TO 424 FT-LBS.~~  
**LUBRICATE STUDS AND TORQUE TO 230 FT-LBS.**
4.

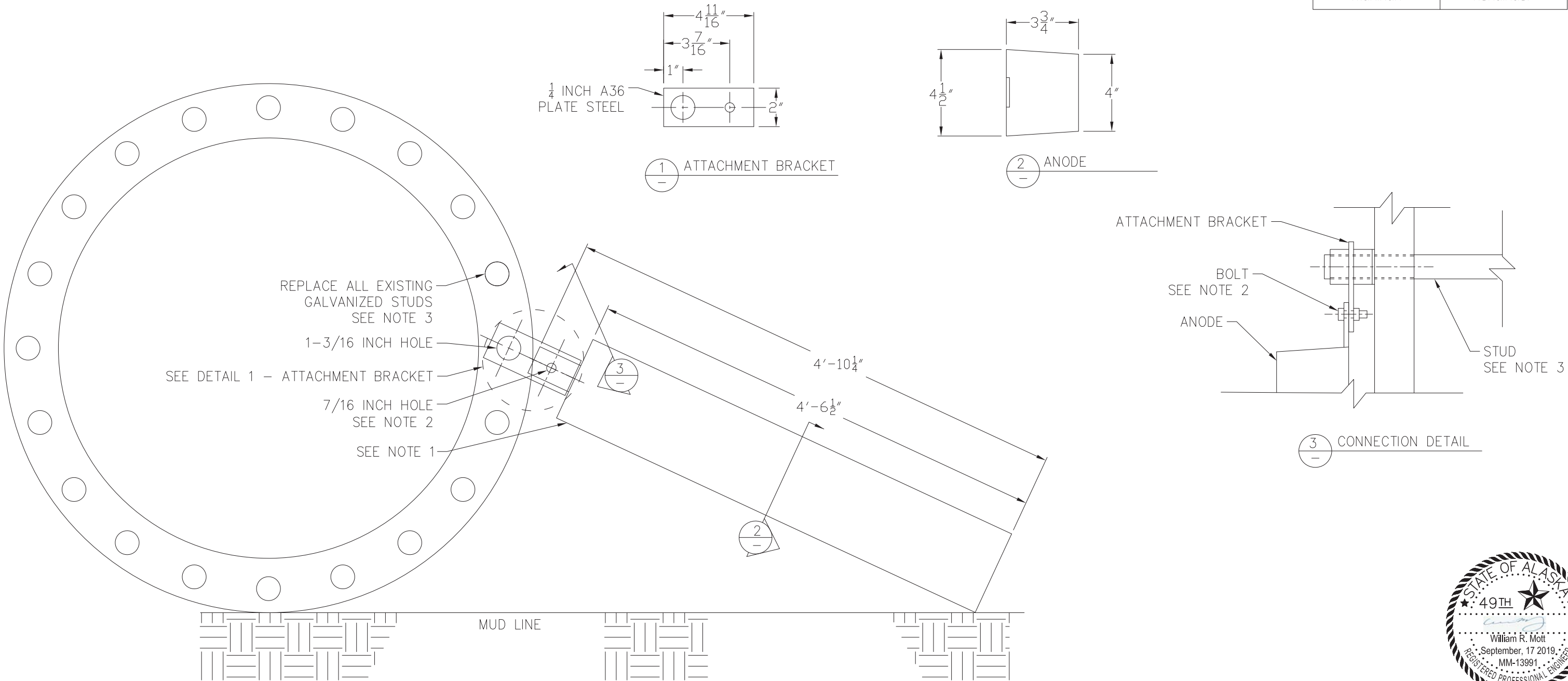
CONTRACTOR TO PROVIDE CLEAR VIDEO DOCUMENTATION OF ANODE INSTALLATIONS AND FLANGE CONDITIONS
5.

THE BOTTOM OF THE FLANGE MAY BE PARTIALLY BURIED IN SILT WHICH WILL NEED TO BE REMOVED TO CHANGE THE STUDS OUT.
6.

FLANGE LOCATIONS:  
-58.2968047°, -134.4060941°  
-58.2941755°, -134.4023500°  
-58.2916186°, -134.3985354°  
DEPTH: 100-110' FROM MLLW 0.0'
7.

BOLTS SHALL BE CHANGED OUT ONE AT A TIME

Anode Composition	
Element:	Percentage:
Indium (In)	0.016 to 0.02%
Zinc (Zn)	4.75 to 5.75%
Silicon (Si)	0.08 to 0.12%
Copper (Cu)	0.003% Max
Iron (Fe)	0.12% Max
Cadmium (Cd)	0.002% Max
Others, each	0.02% Max
Others, total	0.05% Max
Aluminum	Remainder



Revisions		
Date	Description	Intls.
9/17/19	Addendum No. 2	
9/23/19	Addendum No. 3	

Prepared by:

**Taku Engineering, llc**

**CITY AND BOROUGH OF JUNEAU**  
**ALASKA'S CAPITAL CITY**  
ENGINEERING DEPARTMENT

406 W. Fireweed Ln.  
Anchorage, AK 99503

**OUTER DRIVE FORCE MAIN**  
**CATHODIC PROTECTION**  
Contract No. BE20-082

**FLANGE CONNECTION**  
**DETAILS**

DESIGNED BY: MDM	CHECKED BY:	FILE:
DATE: 7/12/19	DRAWN BY: MDM	SCALE: As Shown