



INFORMATION TO PROPOSERS
for

**(C3) RFP No. E20-088
Capital Avenue Reconstruction
Willhoughby to Ninth**

ISSUED BY:

City and Borough of Juneau
ENGINEERING DEPARTMENT
155 South Seward Street
Juneau, Alaska 99801

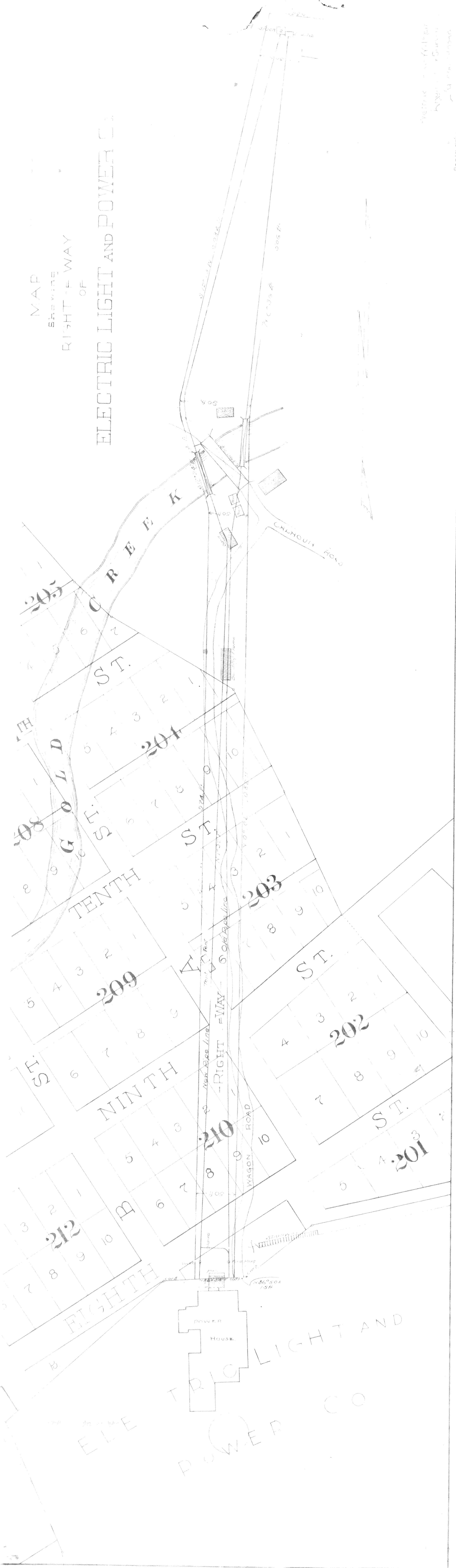
Date Issued: August 28, 2019

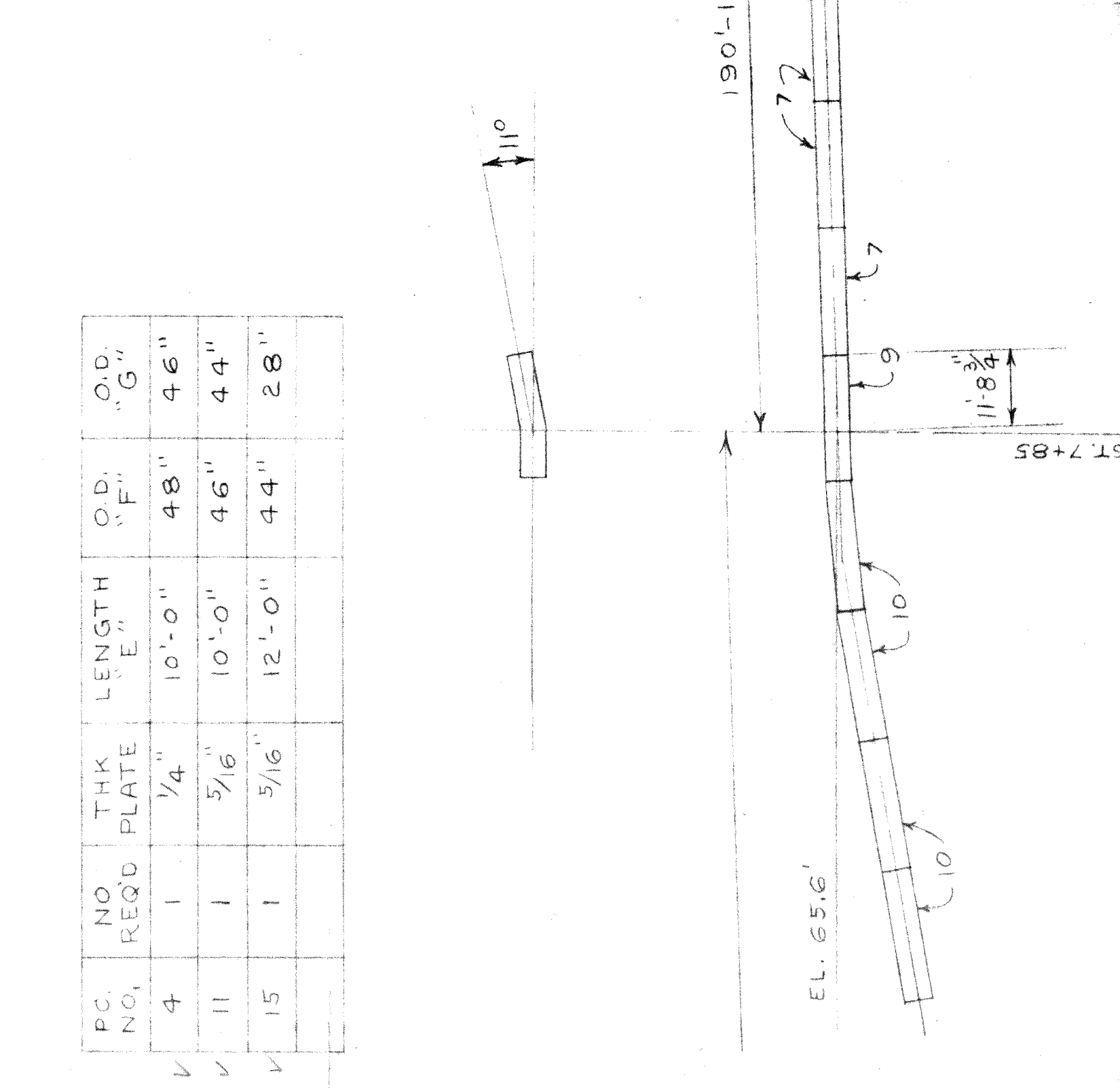
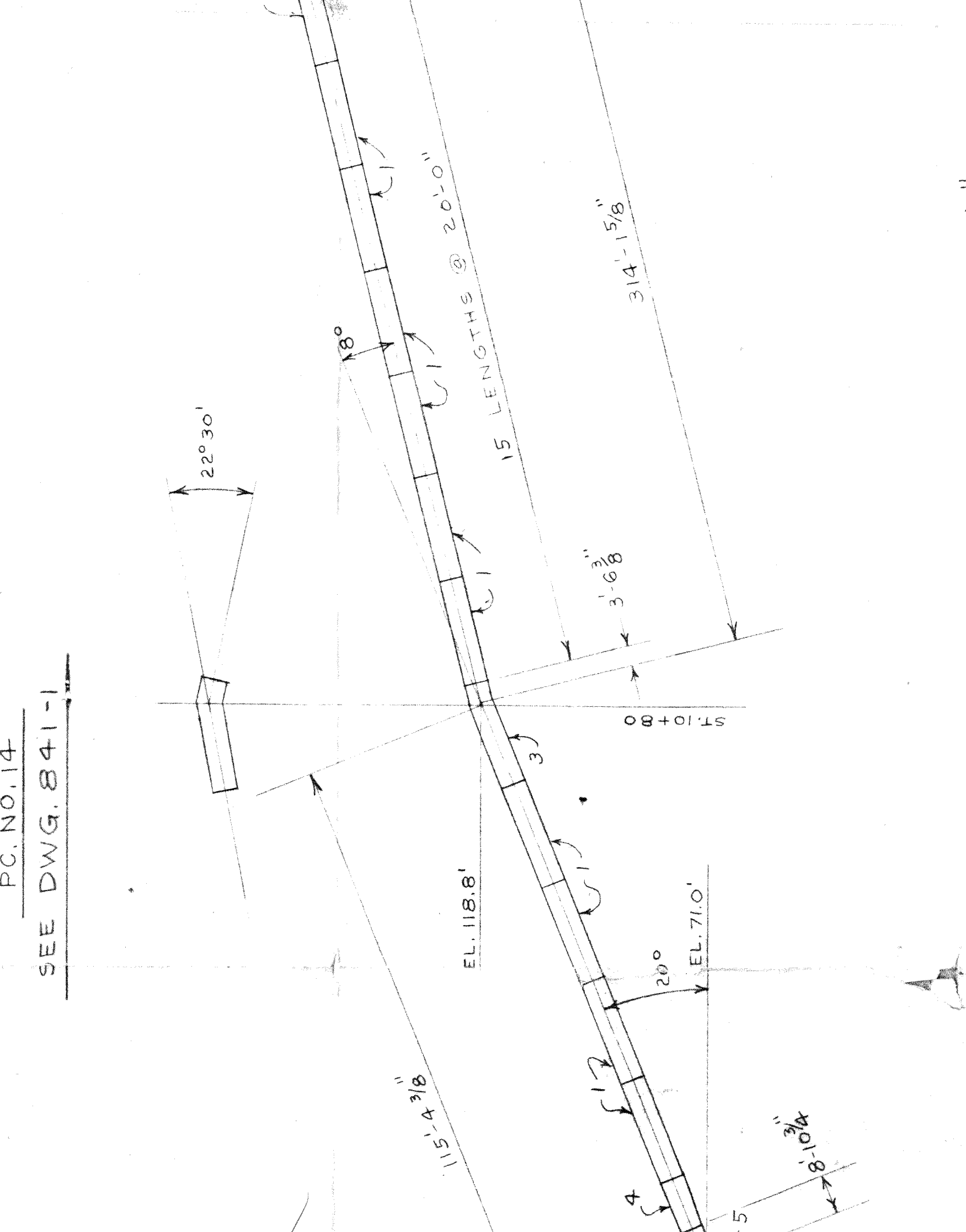
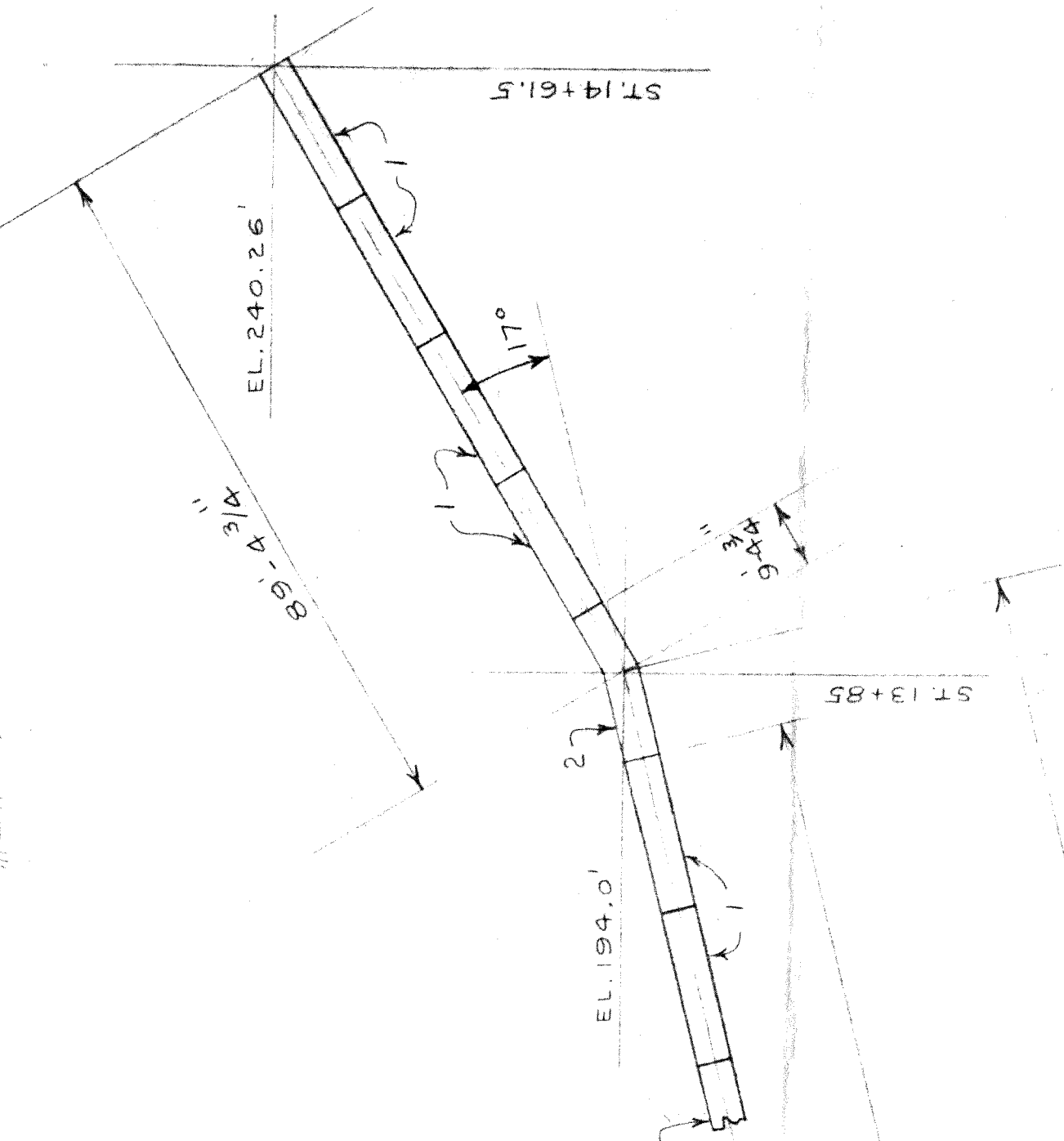
The following information is posted online. Please refer to the CBJ Engineering Contracts Division webpage at: <http://www.juneau.org/engineeringftp/contracts/Contracts.php>. This is **not** an addendum.

- ❖ For project area information only proposers are provided the attached drawings that were made available during the August 27, 2019 pre-proposal meeting.

MAP
SHOWING
RIGHT-OF-WAY
OF

ELECTRIC LIGHT AND POWER CO.







VICINITY MAP
SOURCE: U.S.G.S. QUADANGLE, JUNEAU (1921), ALASKA
SCALE: 1"=1 MILE
DATE: 1982
REV: 1987

SYMBOLS

- ORIGINAL G.L.O. (R.L.M. MONUMENT (RECOVERED))
- D.G.T. & P.T. MONUMENT (RECOVERED)
- A.T.S. NO. 2 BRASS STEM REFERENCE MONUMENT
- H.O.S. BRASS WASHER WITH CONCRETE NAIL (ESTABLISHED)
- H.O.S. SECONDARY MONUMENT - 1/4" PLASTIC SURV. CAP & REBAR (ESTABLISHED)
- 1/4" SECONDARY MONUMENT - 1/4" PLASTIC SURV. CAP & REBAR (RECOVERED)
- H.O.S. 1/2" IN CONCRETE (ESTABLISHED)
- 1/4" PRIMARY MONUMENT (RECOVERED)

GENERAL NOTES

- THE BASIS-OF-BEARING UTILIZED TO CONDUCT THIS SURVEY WAS THE LINE-OF-SIGHT BETWEEN RMC-16, ALASKA COAST AND SURVEY NO. 10, 1982, AND SECTION 10, SHEET NO. 3 OF RECORD 15, 58°29'45" N AS SHOWN ON SHEET NO. 3 OF SURVEY NO. 3 (041567E).
- WHERE RECORD COURSES (BEARINGS AND/OR DISTANCES) DIFFER FROM SURVEY COURSES MEASURED AND/OR COMPUTED BY THIS SURVEY, THE RECORD COURSE IS SHOWN WITHIN PARENTHESES, WHILE THE SURVEY COURSE IS SHOWN WITHIN THE SURVEY COURSE.
- ALL BEARINGS DENOTED BY THIS PLAT HAVE BEEN ROUNDED TO THE NEAREST 0°00'15" OF ARC.
- CAPITOL AVENUE RIGHT-OF-WAY, AS DENOTED BY THIS PLAT, NORTH OF LOT 8-B IS AS SHOWN ON SHEET NO. 6 OF 13 OF THE "CITY OF JUNEAU PLATS" PREPARED BY R.L. CHAM, CITY ENGINEER, AND DATED 1952.

SURVEYOR'S CERTIFICATE

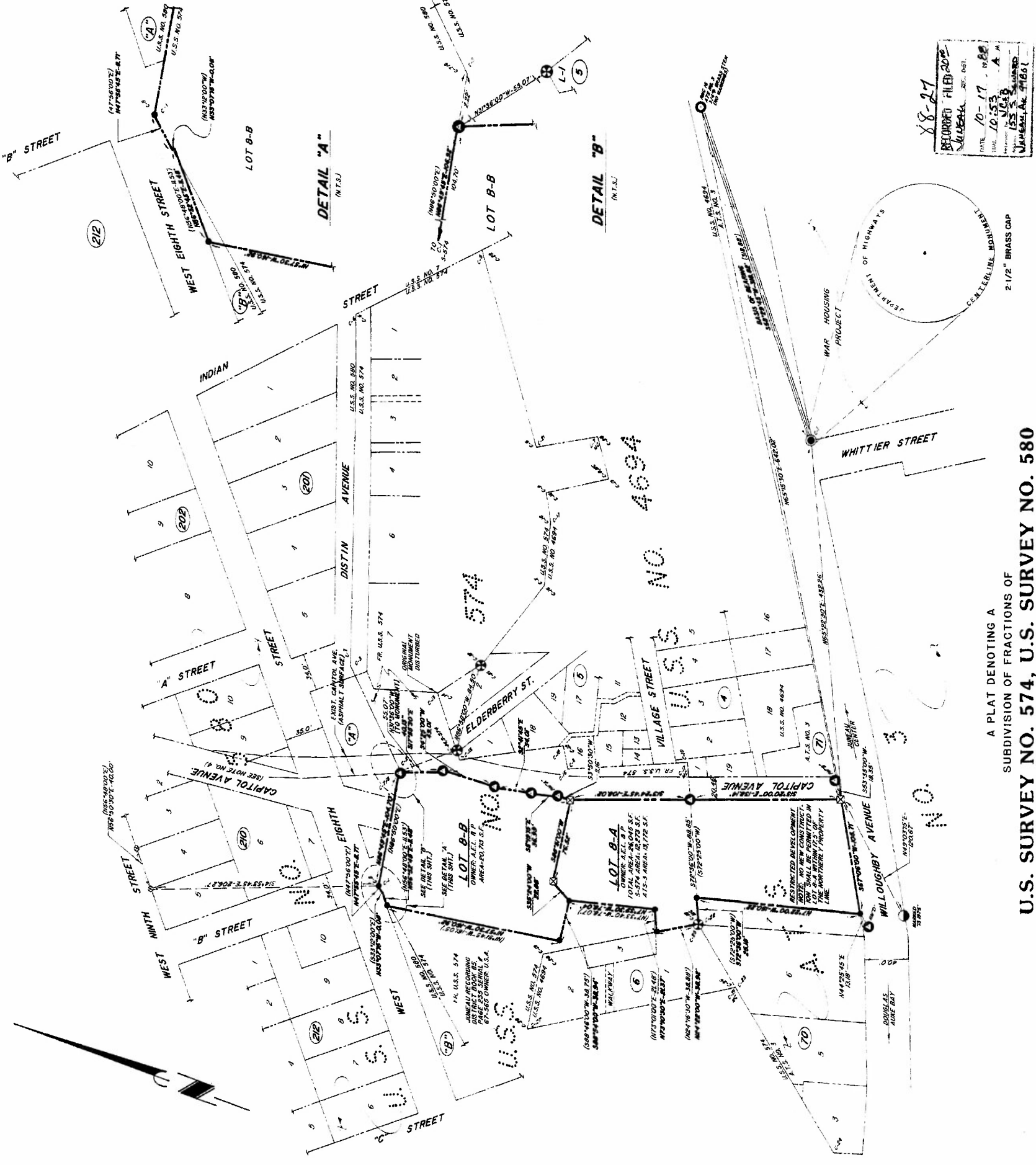
I HEREBY CERTIFY THAT I AM A PROFESSIONAL LAND SURVEYOR REGISTERED IN THE STATE OF ALASKA, AND THAT I HAVE PERSONALLY AND INDEPENDENTLY CONDUCTED THE SURVEY MADE BY ME OR UNDER MY DIRECT SUPERVISION, AND THAT THE ACCURACY OF THE SURVEY IS WITHIN THE LIMITS REQUIRED BY TITLE 4, COMMUNITY DEVELOPMENT REGULATIONS, AND THE BOROUGH OF JUNEAU, THAT ALL DIMENSIONAL AND RELATIVE BEARINGS ARE CORRECT AND THAT MONUMENTS ARE SET IN PLACE AND NOTED UPON THIS PLAT AS PRESENTED



A PLAT DENOTING A
SUBDIVISION OF FRACTIONS OF
U.S. SURVEY NO. 574, U.S. SURVEY NO. 580
LOT NO. 8, BLOCK 70, A.T.S. NO. 3

LOT 8-A AND LOT 8-B
AELP-ALP SUBDIVISION

CITY & BOROUGH OF JUNEAU
JUNEAU RECORDING DISTRICT
SUBDIVISION
ALASKA
ELEMENT
ALASKA ELECTRIC LIGHT & POWER CO.
P.O. BOX 44729
JUNEAU, ALASKA 99903



8-21
RECORDED FILED
JUNE 10-17 1988
JUNE 10-17 1988
JUNE 10-17 1988
JUNE 10-17 1988

A PLAT DENOTING A
SUBDIVISION OF FRACTIONS OF
U.S. SURVEY NO. 574, U.S. SURVEY NO. 580
AND
LOT NO. 8, BLOCK 70, A.T.S. NO. 3
INTO

LOT 8-A AND LOT 8-B
AELP-ALP SUBDIVISION

CITY & BOROUGH OF JUNEAU
ALASKA

SCALE: 1"=50'

CERTIFICATE OF OWNERSHIP

I, (WE) HEREBY CERTIFY THAT I AM (WE ARE) THE OWNERS OF THE PROPERTY SHOWN AND DESCRIBED HEREON AND THAT I (WE) HEREBY ADOPT THIS PLAT OF SUBDIVISION WITH MY (OUR) FREE CONSENT, AND DEDICATE ALL STREETS, ALLEYS, WALKS, PARKS AND OTHER OPEN SPACES TO PUBLIC OR PRIVATE USE AS NOTED:

DATED: Oct. 6, 1988
WITNESSES: *William K. Collins*
OWNER: *ALASKA ELECTRIC LIGHT & POWER CO.*

NOTARY'S ACKNOWLEDGEMENT

UNITED STATES OF AMERICA
STATE OF ALASKA
THIS IS TO CERTIFY THAT ON THIS 6th DAY OF October 1988, BEFORE ME, A NOTARY PUBLIC IN AND FOR THE STATE OF ALASKA, *William K. Collins* APPEARED, KNOWN TO ME, TO BE THE PERSON DESCRIBED IN AND WHO EXECUTED THE FOREGOING INSTRUMENT, AND ACKNOWLEDGED TO ME THAT HE SIGNED AND SEALED THE SAME FREELY AND VOLUNTARILY FOR THE USES AND PURPOSES THEREIN MENTIONED.

WITNESS MY HAND AND OFFICIAL SEAL THE DAY AND YEAR IN THIS CERTIFICATE FIRST ABOVE WRITTEN.
William K. Collins
NOTARY PUBLIC FOR ALASKA
MY COMMISSION EXPIRES: 6/30/90

CERTIFICATE OF APPROVAL

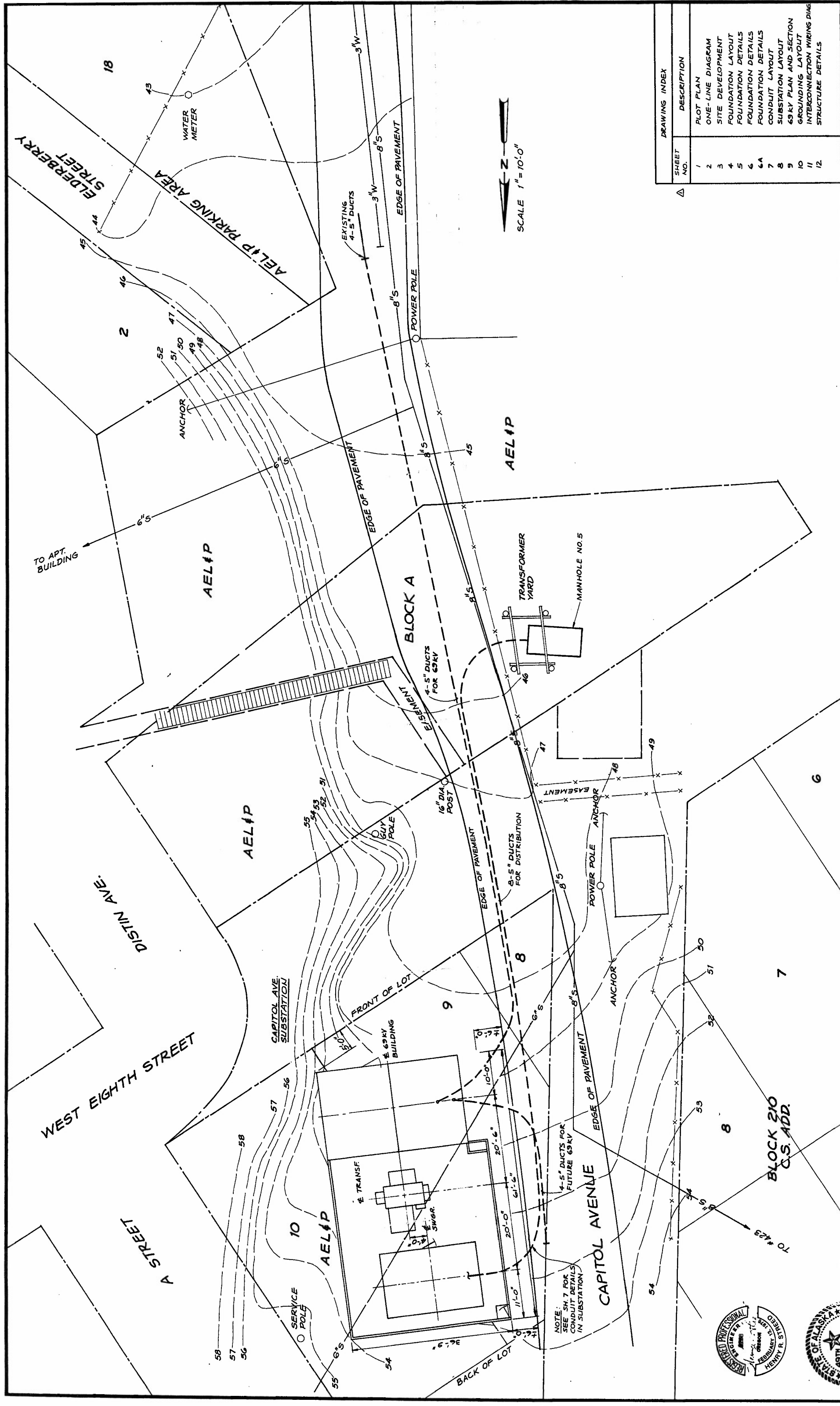
BY THE DIRECTOR:
I HEREBY CERTIFY THAT THE PLAT SHOWN HEREON HAS BEEN FOUND TO COMPLY WITH TITLE 4, COMMUNITY DEVELOPMENT REGULATIONS, AND TITLE 4B OF THE CODE OF THE CITY AND BOROUGH OF JUNEAU, AND IS APPROVED BY THE CITY AND BOROUGH OF JUNEAU DEPARTMENT OF COMMUNITY DEVELOPMENT, OR RECORDING IN THE OFFICE OF THE JUNEAU RECORDING DISTRICT JUNEAU, ALASKA

DATE: 10/14/1988
DIRECTOR: *Karen Bowman*
CITY AND BOROUGH OF JUNEAU
DEPARTMENT OF COMMUNITY DEVELOPMENT

ATTEST:

Patty Ann Polley
CLERK
CITY AND BOROUGH OF JUNEAU

NO.	DATE	REVISION
1	10/14/88	DETAILS, EXIST. CAPITOL AVE.
2	10/14/88	LOT 8-B, RESTRICTED DEVELOPMENT NOTE
3	10/14/88	REVISION
4	10/14/88	REVISION
5	10/14/88	REVISION
6	10/14/88	REVISION
7	10/14/88	REVISION
8	10/14/88	REVISION
9	10/14/88	REVISION
10	10/14/88	REVISION
11	10/14/88	REVISION
12	10/14/88	REVISION
13	10/14/88	REVISION
14	10/14/88	REVISION
15	10/14/88	REVISION
16	10/14/88	REVISION
17	10/14/88	REVISION
18	10/14/88	REVISION
19	10/14/88	REVISION
20	10/14/88	REVISION
21	10/14/88	REVISION
22	10/14/88	REVISION
23	10/14/88	REVISION
24	10/14/88	REVISION
25	10/14/88	REVISION
26	10/14/88	REVISION
27	10/14/88	REVISION
28	10/14/88	REVISION
29	10/14/88	REVISION
30	10/14/88	REVISION



SCALE 1"=10'-0"

DRAWING INDEX	
SHEET NO.	DESCRIPTION
1	PLOT PLAN
2	ONE-LINE DIAGRAM
3	SITE DEVELOPMENT
4	FOUNDATION LAYOUT
5	FOUNDATION DETAILS
6	FOUNDATION DETAILS
6A	FOUNDATION LAYOUT
7	CONDUIT LAYOUT
8	SUBSTATION LAYOUT
9	69 KV PLAN AND SECTION
10	GROUNDING LAYOUT
11	INTERCONNECTION WIRING DIAG
12	STRUCTURE DETAILS

CH2M HILL

DES. HRS
DR. LDW
CHK. *3/24*
APPD.

NO. 1119-E

REVISION

NO. DATE

11-9-77 REVISED AS CONST REV GRADE EL, MAIN GATE, DRAINAGE

10-18-77 CHANGED DWG. INDEX

DES. HRS

DR. LDW

CHK. *3/24*

APPD.

LDW

RE

HRS

BY APPD.

ALASKA ELECTRIC LIGHT & POWER CO

JUNEAU ALASKA

CAPITOL AVE. SUBSTATION

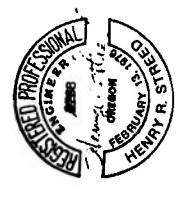
PLOT PLAN

SHEET 1

OF 12

DATE SEPT. 1977

DWG. NO. C10686-1





R & M ENGINEERING, INC.

NOTES:

- * CABLE TRENCH WILL BE BACKFILLED TO HISTORIC ELEVATIONS
- ** FINAL TRENCH TOP SURFACE WILL BE RESTORED TO LIKE HISTORIC TOP SURFACE (PAVING, SIDEWALK...AS-REQUIRED)

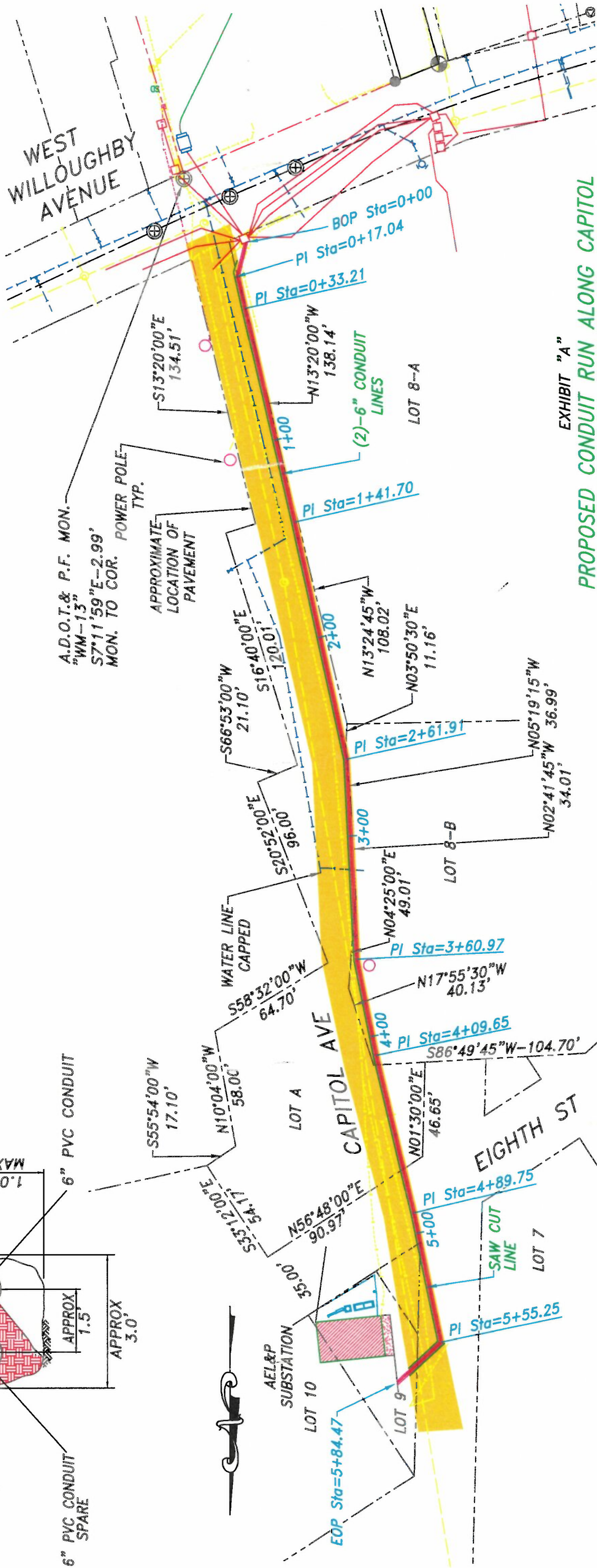
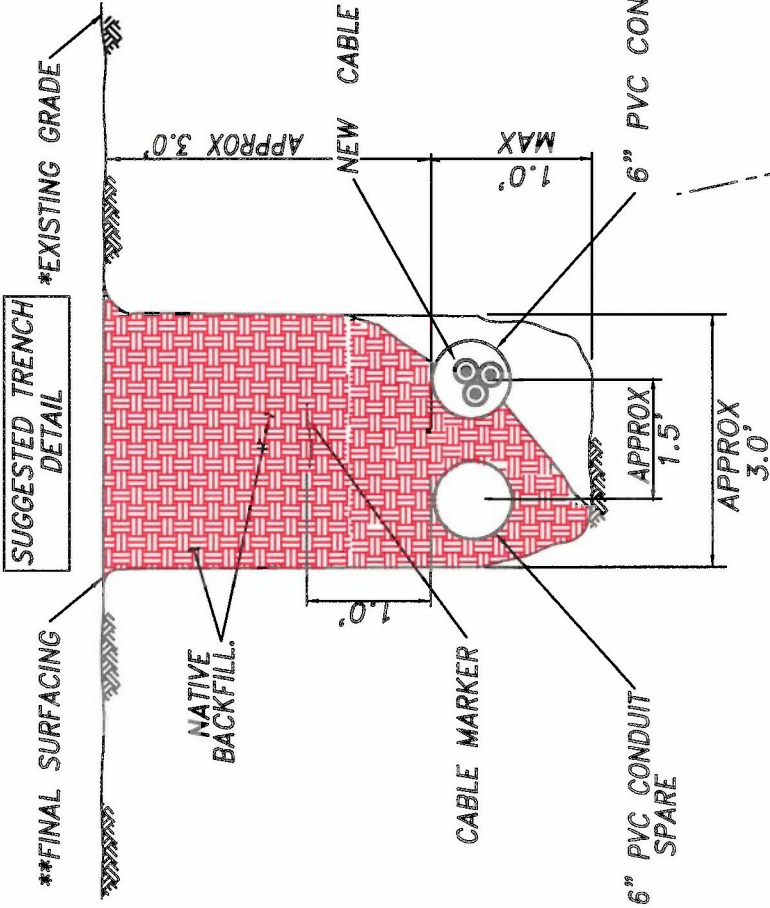


EXHIBIT "A"
PROPOSED CONDUIT RUN ALONG CAPITOL
AVENUE TO S.L.A.M PROJECT

CITY & BOROUGH OF JUNEAU, ALASKA

DATE	SCALE	DRAWN BY	CHECKED BY	PROJECT NO.	DRAWING NO.
4/02/2012	1"= 50'	JAF	CRC	121722	1-1