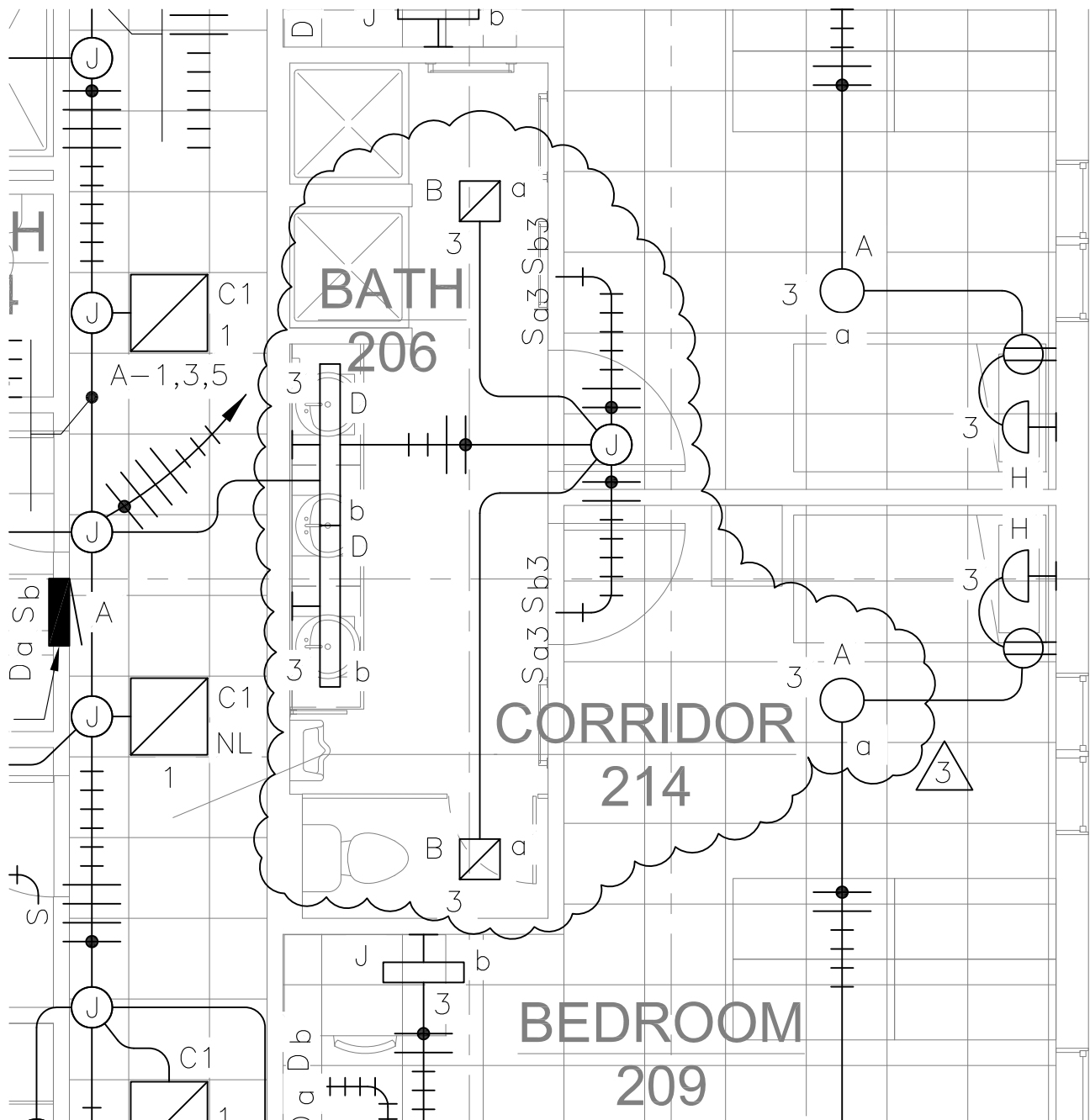
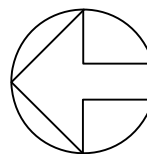


Total number of pages contained within this Addendum: 2



# 1 SECOND FLOOR LIGHTING PLAN

SCALE: 0 2' 4' 8'



217 2nd ST, STE 208, JUNEAU, AK 99801  
PH: (907) 586-5900 / FAX: (907) 586-5901



8-27-18

Project  
Glacier Fire Station Dorm  
Renovation

Drawing Number

SK-E301

Scale

1/4" = 1' 0"

Date

8-27-18