



ADDENDUM TO THE CONTRACT

for the

Juneau International Airport (JNU)
Runway Safety Area Improvements, Phase 2C Re-Bid

Contract No. BE18-213

ADDENDUM NO.: ONE

CURRENT DEADLINE FOR BIDS:
July 20, 2018

PREVIOUS ADDENDA: NONE

ISSUED BY: City and Borough of Juneau
ENGINEERING DEPARTMENT
155 South Seward Street
Juneau, Alaska 99801

DATE ADDENDUM ISSUED: July 13, 2018

The following items of the contract are modified as herein indicated. All other items remain the same. This addendum has been issued and is posted online. Please refer to the CBJ Engineering Contracts Division webpage at: <http://www.juneau.org/engineeringftp/contracts/Contracts.php>

CLARIFICATIONS:

Section 00 5420 – DBE Program, 2.C. Bidders may solicit DBE participation from areas throughout the state of Alaska. ***Solicitations should focus on subcontractors, services, material suppliers, and manufacturers that the Bidder intends to consider for use on the project.***

PROJECT MANUAL:

Item No. 1 NOTICE INVITING BIDS – 00 0300, COMPLETION OF WORK, ***change*** the completion date ***from*** June 30, 2019 ***to*** July 30, 2019.

Item No. 2 NOTICE INVITING BIDS – 00 0300 – BIDDING, CONTRACT, OR TECHNICAL QUESTIONS, ***delete*** the contact information for Greg Smith and ***replace*** with:

Janet Sanbei, Administrative Officer
CBJ Engineering Department, 3rd Floor Marine View Center
janet.sanbei@juneau.org
Telephone: (907) 586-0480
Fax: (907) 586-4530

Item No. 3 NOTICE INVITING BIDS – 00 0300 DBE GOAL, change the DBE goal percentage to 5%

DRAWINGS:

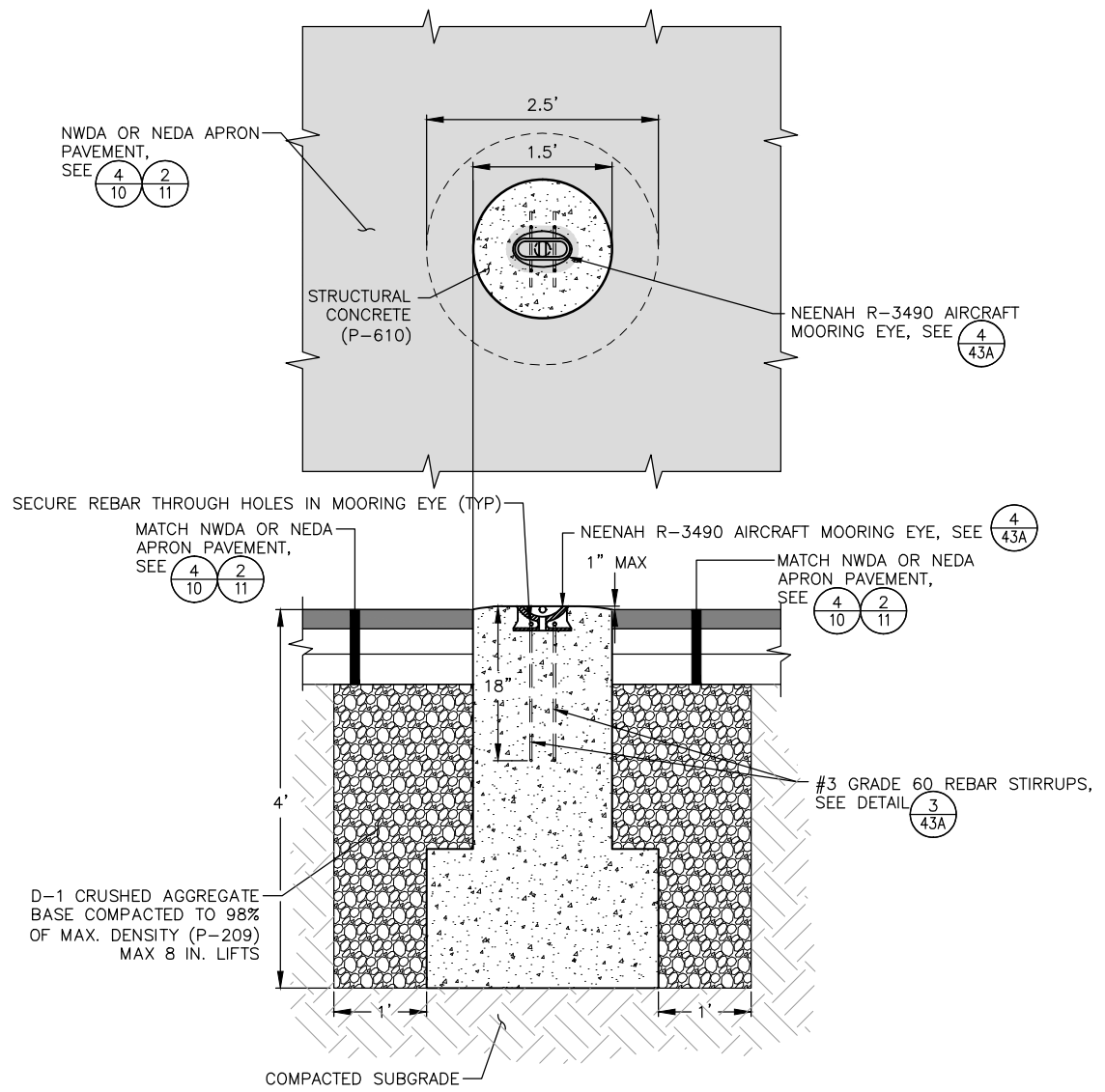
The following Sheet is labeled Addendum No. 1, dated 7/11/2018:

Item No. 1 SHEET 43 **Delete** Sheet 43 and **Replace** with the attached Sheet 43A.

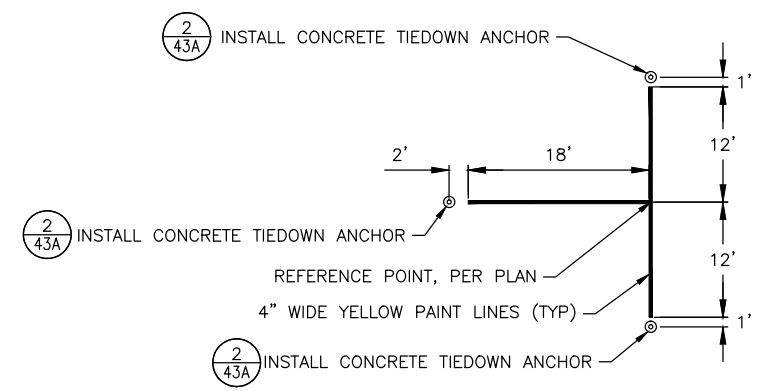
By: 
Greg Smith,
Contract Administrator

Total number of pages contained within this Addendum: 3

File: C:\Civil 3D Projects\2014\23\62033-01\Aviation\Design\SA14-AV-JNU-IC-DT.dwg
Script File:
Plot Date:
W. HOLDEN
S. OSGOOD
R. TEMPLADO
Designed By:
Checked By:
Drawn By:
DOWL File No. 232-89

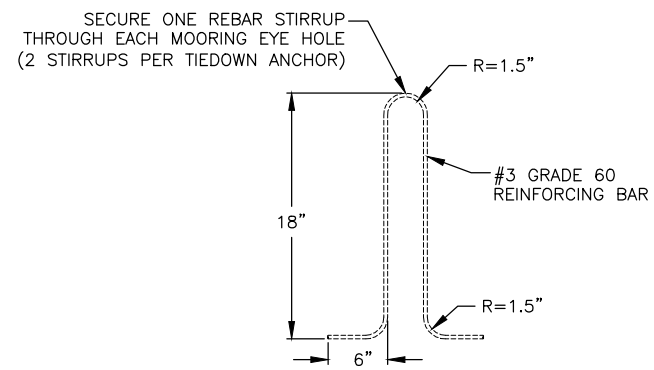


2
43A
NTS
CONCRETE TIEDOWN ANCHOR DETAIL

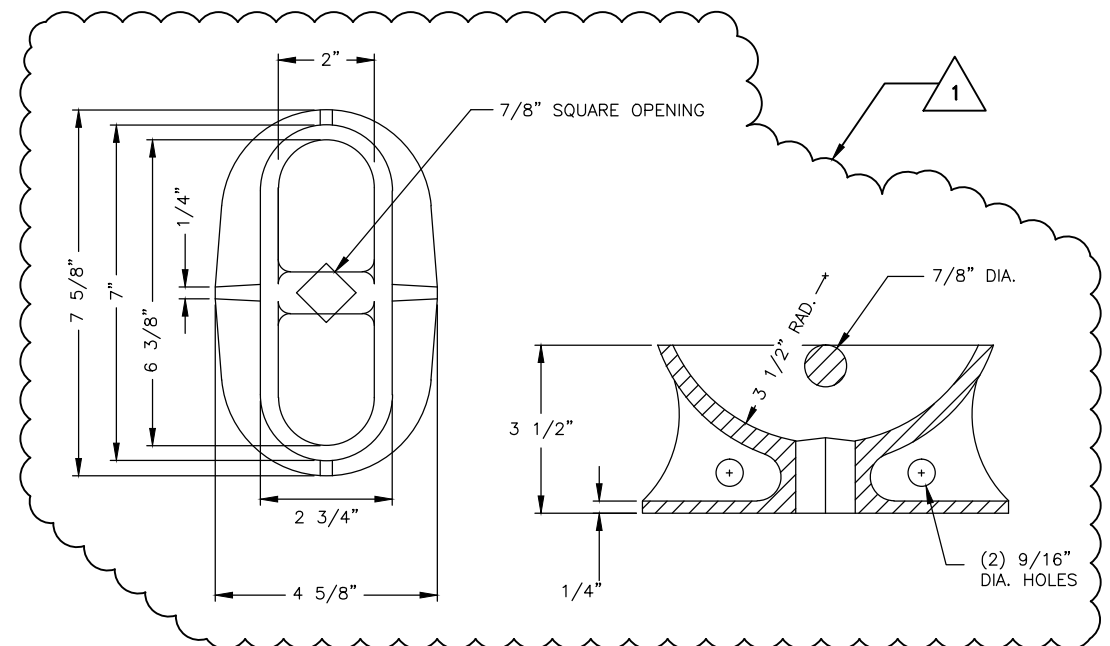


1
43A
NTS
TIEDOWN LAYOUT AND MARKING DETAIL

- TIEDOWN MOORING EYE ORIENTATION NOTES**
1. FOR TIEDOWN ANCHORS LOCATED AT AIRCRAFT WING, ORIENT MOORING EYE PERPENDICULAR TO AIRCRAFT CENTERLINE.
 2. FOR TIEDOWN ANCHOR LOCATED AT AIRCRAFT TAIL, ORIENT MOORING EYE PARALLEL TO AIRCRAFT CENTERLINE.



3
43A
NTS
REBAR STIRRUP DETAIL



4
43A
NTS
NEENAH FOUNDRY R-3490 AIRCRAFT MOORING EYE