



ADDENDUM TO THE CONTRACT

for the

**Valley Shop Renovation
Contract No. BE18-241**

ADDENDUM NO.: TWO

CURRENT DEADLINE FOR BIDS:

June 26, 2018

PREVIOUS ADDENDA: ONE

ISSUED BY: City and Borough of Juneau
ENGINEERING DEPARTMENT
155 South Seward Street
Juneau, Alaska 99801

DATE ADDENDUM ISSUED:

June 21, 2018

The following items of the contract are modified as herein indicated. All other items remain the same. This addendum has been issued and is posted online. Please refer to the CBJ Engineering Contracts Division webpage at: <http://www.juneau.org/engineeringftp/contracts/Contracts.php>

Clarifications:

Question 1: *Sheet E102 shows removing the SD's. Do they need to be replaced?*

Response: Yes, replace like in kind. A fire alarm system is not required for this building.

Question 2: *What is the mounting height for the high bay fixtures in the main shop?*

Response: Light fixtures in Main Shop 101 mount to structure. They are coordinated to be supported from the existing purlins.

Question 3: *Sheet A201 calls for a new concrete slab in Conf 105 matching the height of the slab in office 106. Can a slab thickness be called out for volume/bidding purposes?*

Response: Site visit provided contractor opportunity to confirm elevation gain and loss for subject area.

Question 4: *Is the SCADA Monitor contractor installed, contractor supplied?*

Response: The SCADA Monitor is Owner Supplied and Owner Installed.

PROJECT MANUAL:

Item No. 1 SECTION 081113 HOLLOW METAL DOORS AND FRAMES – 2.7 HARDWARE A.2, **Add** existing hardware: Best- 9K Locks Stainless Steel Finish.

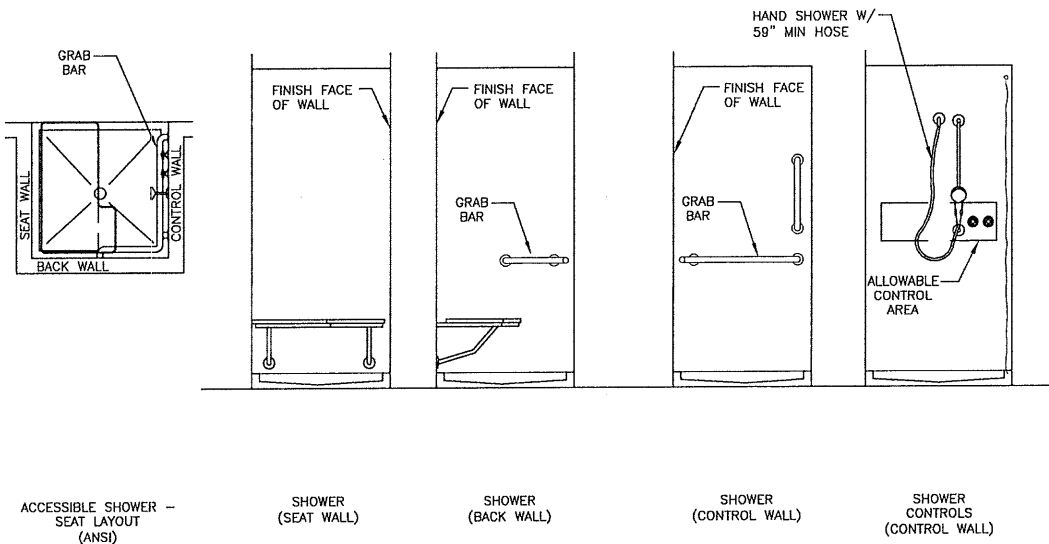
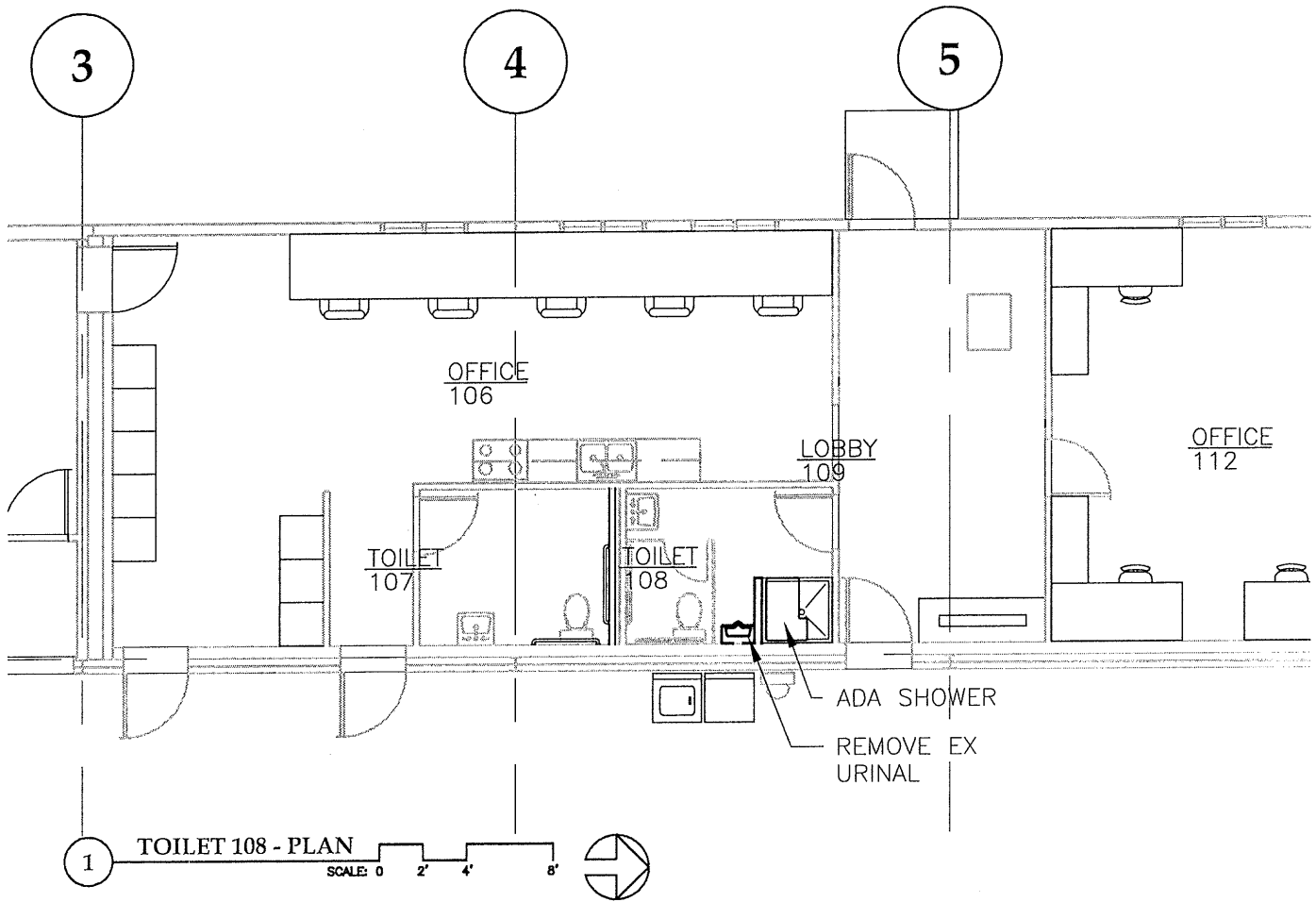
DRAWINGS:

- Item No. 1 Sheet A201 FLOOR PLAN, at toilet 108; **Delete** floor at gridline G4.5 "EXTENTS OF SV." - **Add:** "EXTENTS OF CONC SLAB AND SV"
- Item No. 2 Sheet A201 FLOOR PLAN, at Toilet 108; **Delete** shower at gridline G4.5
- Item No. 2 **Add** Sheet SK2 Shower Details/Elevations after Sheet A901 INTERIOR DETAILS
- Item No. 3 Sheet M301 SPECIFICATIONS, **Add** ADA Shower - basis of design - Freedom ADA Transfer Shower 39" x 38", **Model** APFQ3682BF625 to SECTION 15450 - PLUMBING FIXTURES AND TRIM

By: 

Greg Smith,
Contract Administrator

Total number of pages contained within this Addendum: 6



2 TYPICAL ELEVATIONS

NOT TO SCALE

Freedom ADA Transfer Shower 39" x 38"



Shown with optional accessories
Lifetime limited warranty

Handed by valve, left valve shown

Shower is ADA compliant when installed with available ADAAG accessories.

Model

APFQ3682BF625

39" x 37.5" x 82" OD
36" x 36" ID

5/8" threshold with pre-leveled and reinforced shower base for easy installation

Dual drywall receiver flange for easy installation

Durable, luxurious and easy to clean applied acrylic with smooth walls, and 2 molded soap ledges

Fully reinforced walls offers strength and easy installation of accessories

ADA accessories available:
Grab bars, folding shower seat, collapsible water retainer, weighted shower curtain and rod, slide bar with handheld shower, pressure balance valve, caulkless drain

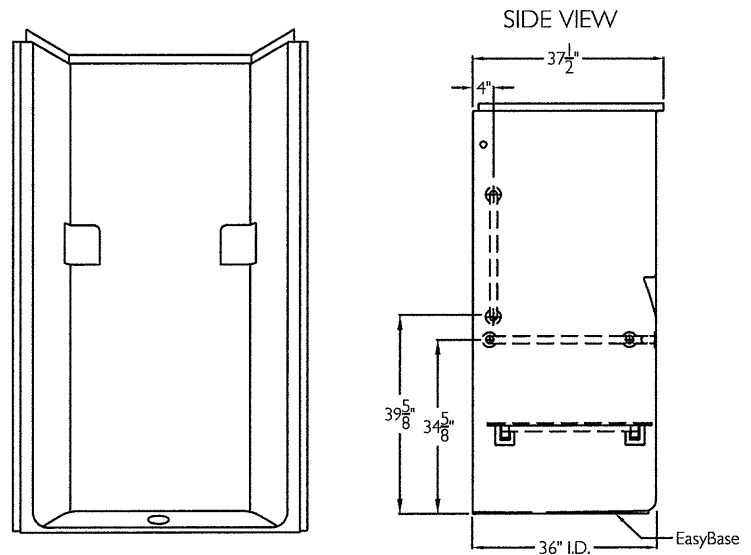
FREEOM SHOWERS

MODEL: APFQ3682BF625 ADA Transfer Shower

Submittal Data

Product Features

- 39" x 37.5" x 82"
- 5/8" barrier free threshold
- Dual drywall receiver flange
- Self-supporting and pre-leveled shower base eliminates mud setting
- Fully reinforced backing on walls
- Easy to clean applied acrylic
- Flat smooth walls
- Textured slip-resistant floor
- Center drain location
- Lifetime manufacturer limited warranty

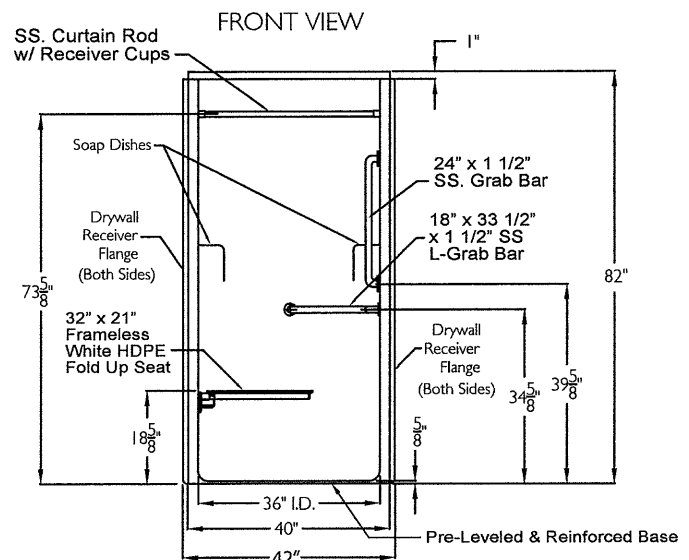


Code Compliance

- IPC International Plumbing Code
- UPC Uniform Plumbing Code
- ANSI Z124.2 Standards for Plastic Showers
- ADA Accessibility Guidelines for Buildings and Facilities
- ANSI A117.1 Accessible and Usable Buildings and Facilities
- CSA approved

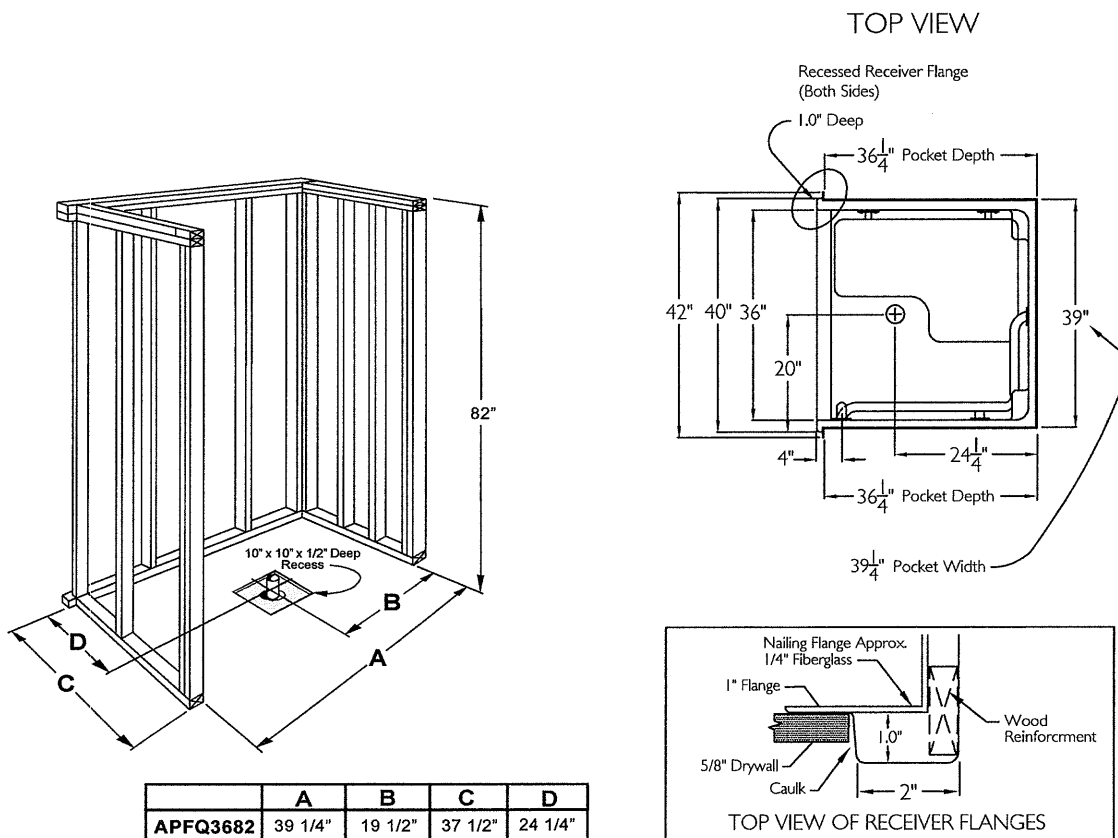
Optional Accessories

- Collapsible Water Retainer
- Folding Shower Seat
- Caulkless Drain
- Grab Bars
- Shower Rod and Curtain
- Pressure Balance Valve with hand-held Shower and Slide Bar

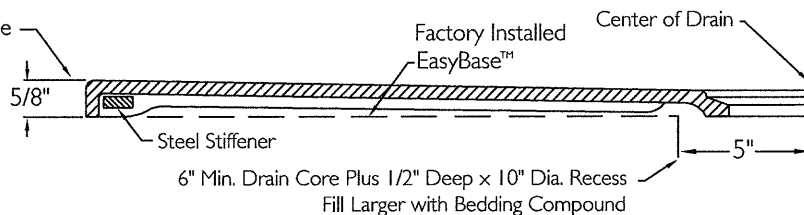


FREEOM SHOWERS

MODEL: APFQ3682BF625 ADA Transfer Shower Submittal Data - Installation



Coordinate Finished Floor Height For Code.
Finished Floor May Be No More Than 1/4\" Below The Top Of Compartment Threshold.



Detail Of Threshold