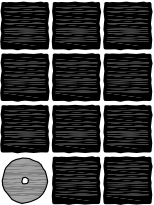


City and Borough of Juneau
Douglas Fire Hall/Library & Skate Park
Roof Replacement
CBJ Contract No. BE18-150
Juneau, Alaska
February 27, 2017

BASE BID

ALTERNATE BID

ARCHITECT JENSEN YORBA LOTT, INC 522 WEST 10TH STREET JUNEAU, ALASKA 99801 (907) 586-1070 FAX (907) 586-3959		SHEET INDEX - DOUGLAS ISLAND FIRE HALL & LIBRARY	SHEET INDEX - JUNEAU SKATE PARK	<div>STATE OF ALASKA 19TH ANTHONY V. YORBA Feb. 28, 18 NO. A 7597 REGISTERED PROFESSIONAL ARCHITECT</div> <div></div> <div>Jensen Yorba Lott Inc.</div> <div>522 West 10th Street Juneau, Alaska 99801 phone 907-586-1070 fax 907-586-3959 jensenyorbalott.com FILE: 16033</div> <div>A000</div>
		<u>Architectural</u> A001 COVER SHEET A101 SITE PLAN AD201 DEMOLITION ROOF PLAN AD301 DEMOLITION BUILDING SECTION AD801 DEMOLITION EXTERIOR DETAILS AD802 DEMOLITION EXTERIOR DETAILS A201 ROOF PLAN A301 BUILDING SECTION A801 EXTERIOR DETAILS A802 EXTERIOR DETAILS	<u>Architectural</u> A001 COVER SHEET A101 SITE PLAN AD201 DEMOLITION ROOF PLAN AD801 DEMOLITION EXTERIOR DETAILS A201 ROOF PLAN A301 BUILDING SECTION A801 EXTERIOR DETAILS A802 EXTERIOR DETAILS	

NOTE:
THESE DRAWINGS ARE BASED ON A LIMITED AMOUNT
OF INFORMATION ABOUT AN EXISTING BUILDING.
THE CONTRACTOR MUST FIELD VERIFY ALL INFORMATION
SHOWN AND NOTIFY THE ARCHITECT OF ANY
DISCREPANCY PRIOR TO MODIFICATION

City and Borough of Juneau
Juneau Skate Park
Roof Replacement
CBJ Contract No. BE18-150
Juneau, Alaska
February 27, 2018

ALTERNATE BID

ARCHITECT
JENSEN YORBA LOTT, INC

522 WEST 10TH STREET
JUNEAU, ALASKA 99801
(907) 586-1070
FAX (907) 586-3959

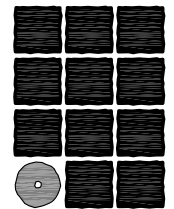
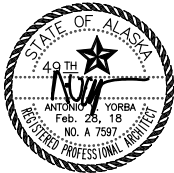
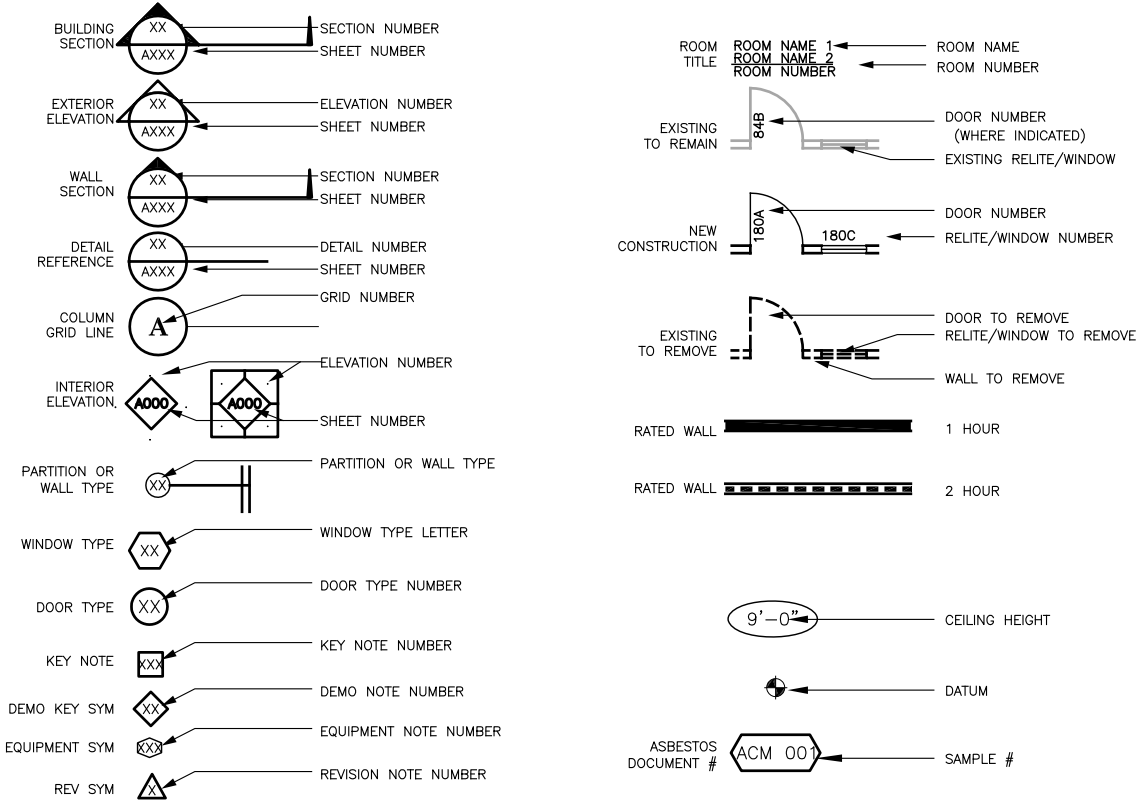
SHEET INDEX

A001 COVER SHEET
A101 SITE PLAN
AD201 DEMOLITION ROOF PLAN
AD801 DEMOLITION EXTERIOR DETAILS
A201 ROOF PLAN
A301 BUILDING SECTION
A801 EXTERIOR DETAILS

ABBREVIATIONS

L	ANGLE	EMER	EMERGENCY	LAM	LAMINATE	RH	ROBE HOOK	VEST	VESTIBULE
AC	ASPHALT CONCRETE	ENCL	ENCLOSURE	LAV	LAVATORY	RL	RAIN LEADER	VR	VAPOR RETARDER
ACM	ASBESTOS CONTAINING MATERIAL	EPDM	ETHYLENE PROPYLENE DIANE MONOMER	LB	POUND	RM	ROOM	VTR	VENT THROUGH ROOF
ACP	ACOUSTICAL CEILING PANEL	EPS	EXPANDED POLYSTYRENE	LT	LIGHT	RO	ROUGH OPENING	WB	WEATHER BARRIER
ADJ	ADJUSTABLE	EQ	EQUAL	MIR	MIRROR	RUB	RUBBER	WC	WATER CLOSET
AFF	ABOVE FINISH FLOOR	EQP	EQUIPMENT	MAX	MAXIMUM	SASU	SELF ADHERING SHEET	WD	WOOD
AIB	AIR INFILTRATION BARRIER	EX	EXISTING	MDO	MEDIUM DENSITY OVERLAID	SCD	SEAT COVER DISPENSER	WP	WATERPROOF
AL	ALUMINUM	EXT	EXTERIOR	MECH	MECHANICAL	SF	SCHEDULE	WR	WASTE RECEPTACLE
APPROX	APPROXIMATE	FA	FIRE ALARM	MEMB	MEMBRANE	SCHD	SCHEDULE	WSC	WAINSCOT
ARCH	ARCHITECTURAL	FD	FLOOR DRAIN	MFR	MANUFACTURER	SCH	SCHEDULE	WT	WEIGHT
ASB	ASBESTOS	FDN	FOUNDATION	MH	MANHOLE	SFRM	SPRAYED FIRE-RESISTIVE MATERIAL	WWF	WELDED WIRE FABRIC
BD	BOARD	FEC	FIRE EXTINGUISHER CABINET	MIN	MINIMUM	SHR	SHOWER		
BLDG	BUILDING	FF	FINISH FLOOR	MISC	MISCELLANEOUS	SHTH	SHEATHING		
BLKG	BLOCKING	FHC	FIRE HOSE CABINET	MTD	MOUNTED	SIM	SIMILAR		
BM	BEAM	FIN	FINISH	MTL	METAL	SND	SANITARY NAPKIN DISPENSER		
BOT	BOTTOM	FLASH	FLASHING	MUL	MULLION	SNR	SANITARY NAPKIN RECEPTACLE		
CAB	CABINET	FLR	FLOOR	NIC	NOT IN CONTRACT	SPEC	SPECIFICATIONS		
CB	CATCH BASIN	FOC	FACE OF CONCRETE/CURB	NO OR #	NUMBER	SQ	SQUARE		
CEM	CEMENT	FOF	FACE OF FINISH	NOM	NOMINAL	SQFT	SQUARE FOOT		
CG	CORNER GUARD	FOS	FACE OF STUD	NTS	NOT TO SCALE	SQYD	SQUARE YARD		
CI	CAST IRON	FRP	(GLASS) FIBER REINFORCED PLASTIC	OA	OVERALL	SS	STAINLESS STEEL		
CLG	CEILING	FR	FIRE RETARDANT	OC	ON CENTER	STA	STATION		
COL	COLUMN	FT	FOOT OR FEET	OD	OUTSIDE DIAMETER	STC	SOUND TRANSMISSION CLASS		
CONC	CONCRETE	FTG	FOOTING	OFCI	OWNER FURNISHED	STD	STANDARD		
CONT	CONTINUOUS	FURR	FURRING		CONTRACTOR INSTALLED	STL	STEEL		
CTR	CENTER				OWNER FURNISHED	STOR	STORAGE		
CTSK	COUNTERSUNK			OFOI	OWNER INSTALLED	STRUCT	STRUCTURAL		
		GA	GAUGE		OVERFLOW DRAIN	SUSP	SUSPENDED		
		GALV	GALVANIZED	OFD	OFFICE	SY	SQUARE YARD		
		GB	GRAB BAR	OFF	OFFICE				
DBL	DOUBLE	GL	GLASS	OPNG	OPENING	TB	TOWEL BAR		
DEPT	DEPARTMENT	GWB	GYPSON WALL BOARD	OPP	OPPOSITE	TC	TOP OF CURB		
DF	DRINKING FOUNTAIN	GYP	GYPSON	OSB	ORIENTED STRAND BOARD	TEL	TELEPHONE		
DET	DETAIL					TEMP	TEMPORARY		
DIA	DIAMETER					T&G	TONGUE & GROOVE		
DIM	DIMENSION	HB	HOSE BIBB	PL	PLATE	TOC	TOP OF CONCRETE		
DISP	DISPENSER	HOWD	HARDWOOD	PLAM	PLASTIC LAMINATE	TOD	TOP OF DECK		
DN	DOWN	HM	HOLLOW METAL	PLAS	PLASTER	TPD	TOILET PAPER DISPENSER		
DR	DOOR	HORIZ	HORIZONTAL	PC	PRE-CAST	TRD	TREAD		
DS	DOWNSPOUT	HR	HOUR	PF	PRE-FINISHED	TRTD	PRESSURE TREATED		
DWG	DRAWING	HT	HEIGHT	PR	PAIR	TOW	TOP OF WALL		
DWR	DRAWER	HW	HOT WATER	PWD	PLYWOOD	TYP	TYPICAL		
EA	EACH	ID	INSIDE DIAMETER	R	RISER				
EF	EXHAUST FAN	RAD	RADIUS	RD	ROOF DRAIN	UL	UNDERWRITERS LABORATORIES		
EFIS	EXTERIOR INSULATION & FINISH SYSTEM	REF	REFERENCE	REFR	REFRIGERATOR	UNF	UNFINISHED		
EJ	EXPANSION JOINT	REIN	REINFORCED	REQ	REQUIRED	UON	UNLESS OTHERWISE NOTED		
EL	ELEVATION	REIN	REINFORCED	REQ	REQUIRED	UR	URINAL		
ELEC	ELECTRICAL	RESIL	RESILIENT	VERT	VERTICAL				
ELEV	ELEVATOR								

SYMBOLS

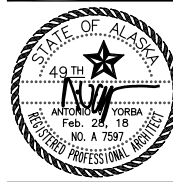


Jensen
Yorba
Lott
Inc.

522 West 10th Street
Juneau, Alaska 99801
phone 907-586-1070
fax 907-586-3959
jensenyorbalott.com

FILE: 17058

A001



City and Borough of Juneau
Juneau Skate Park
Roof Replacement
CBJ Contract No. BE18-150
Juneau, Alaska

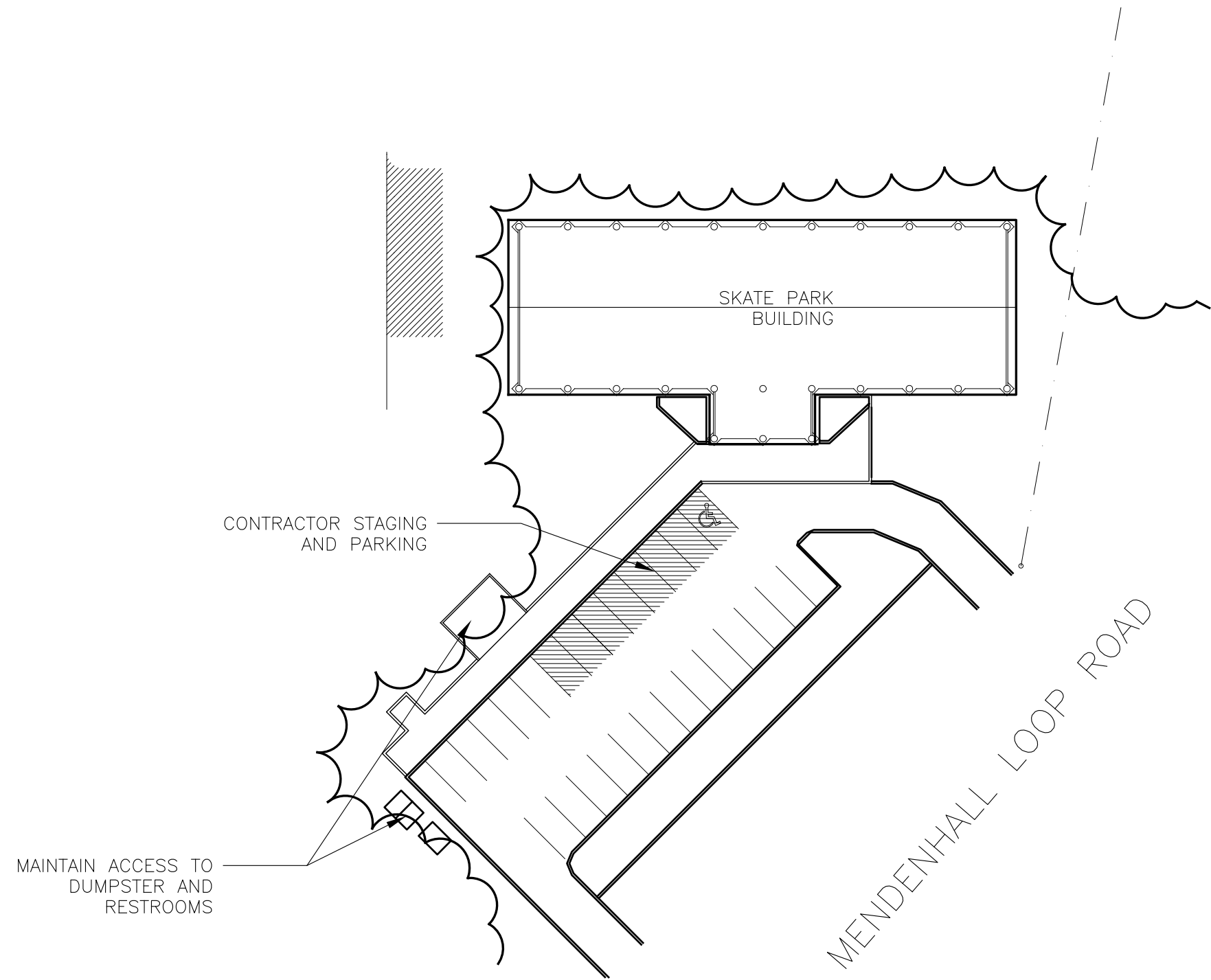
REVISIONS

△	.
△	.
△	.

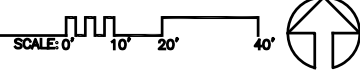
SHEET TITLE
SITE PLAN

DATE: February, 2018
FILE: 17058

NOTE:
THESE DRAWINGS ARE BASED ON A LIMITED AMOUNT
OF INFORMATION ABOUT AN EXISTING BUILDING.
THE CONTRACTOR MUST FIELD VERIFY ALL INFORMATION
SHOWN AND NOTIFY THE ARCHITECT OF ANY
DISCREPANCY PRIOR TO MODIFICATION



1 SITE PLAN

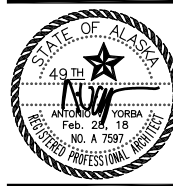


ALTERNATE BID



**Jensen
Yorba
Lott
Inc.**

522 West 10th Street
Juneau, Alaska 99801
phone 907-586-1070
fax 907-586-3959
jensenyorbalott.com



City and Borough of Juneau
Juneau Skate Park
Roof Replacement
CBJ Contract No. BE18-150
Juneau, Alaska

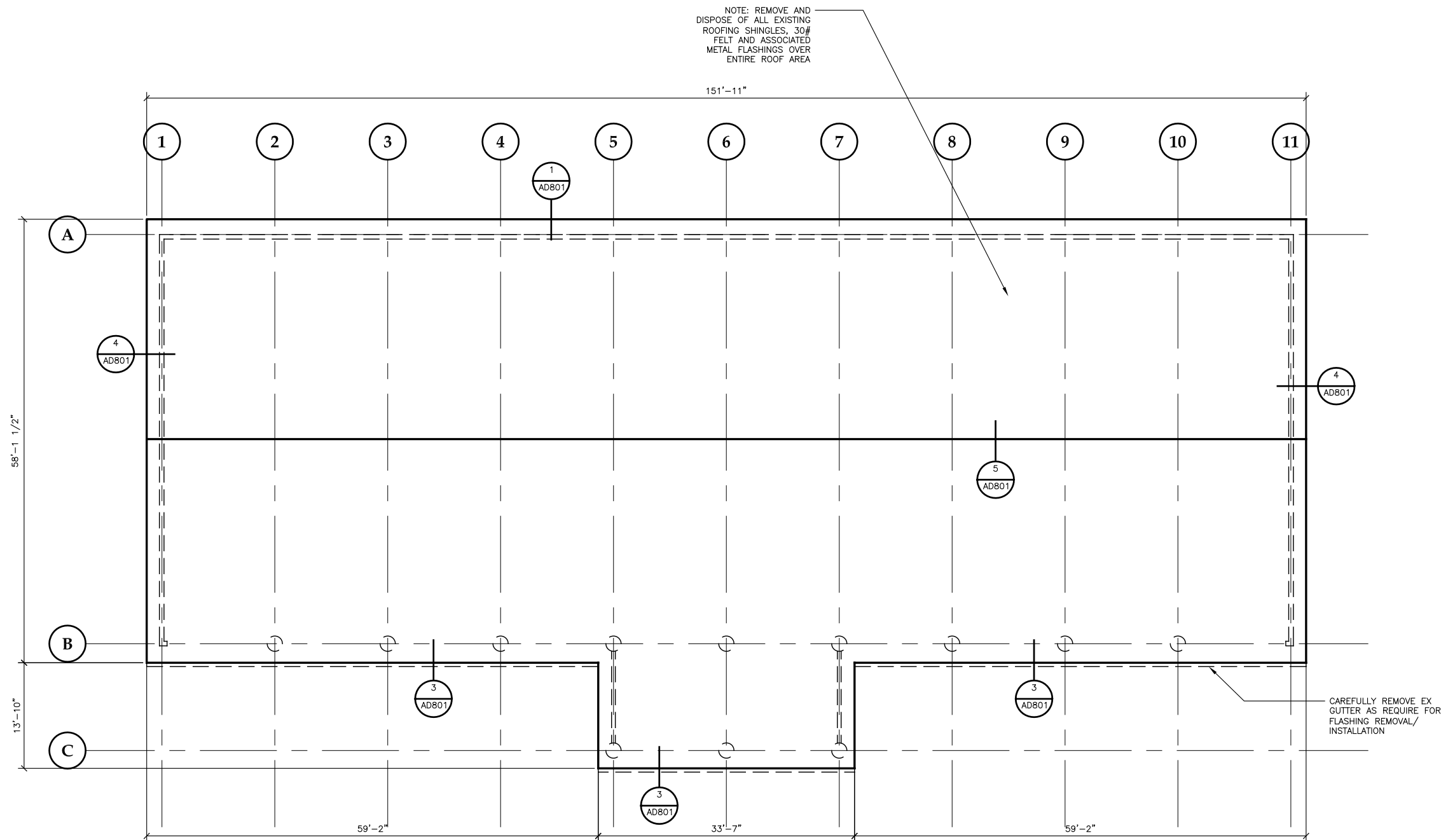
REVISIONS



SHEET TITLE
**DEMOLITION
ROOF PLAN**

DATE: February, 2018
FILE: 17058

AD201

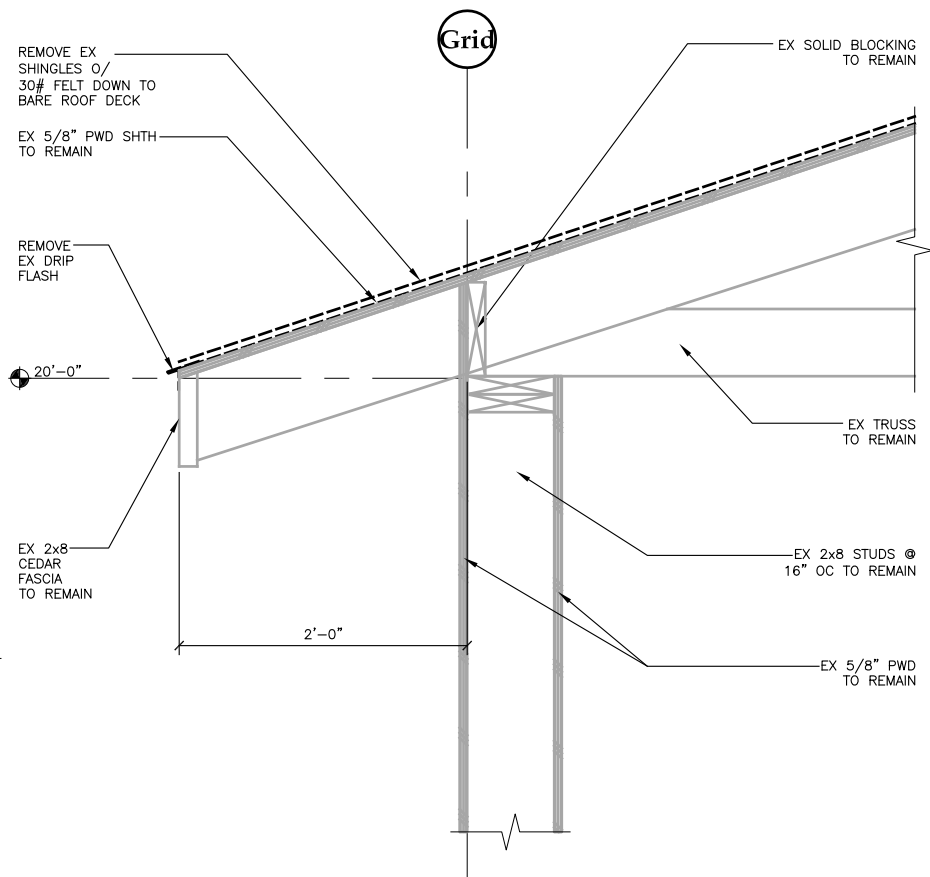


1 DEMOLITION ROOF PLAN

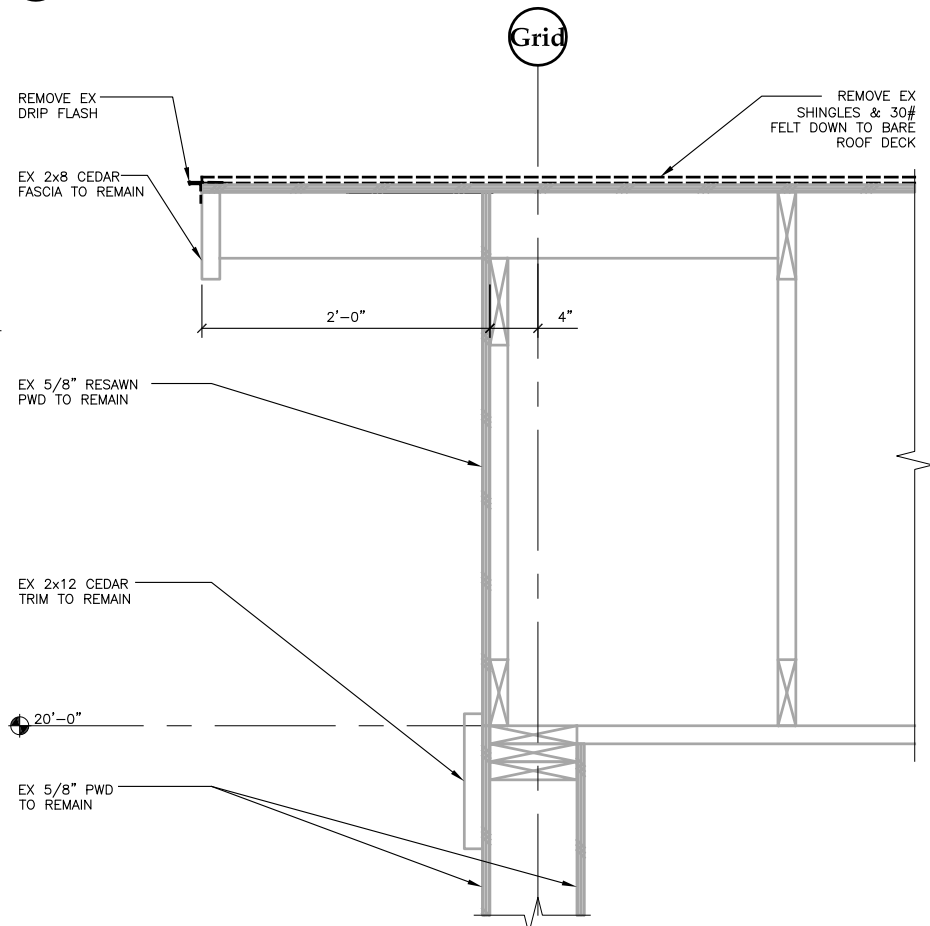
SCALE: 0 4' 8' 16'



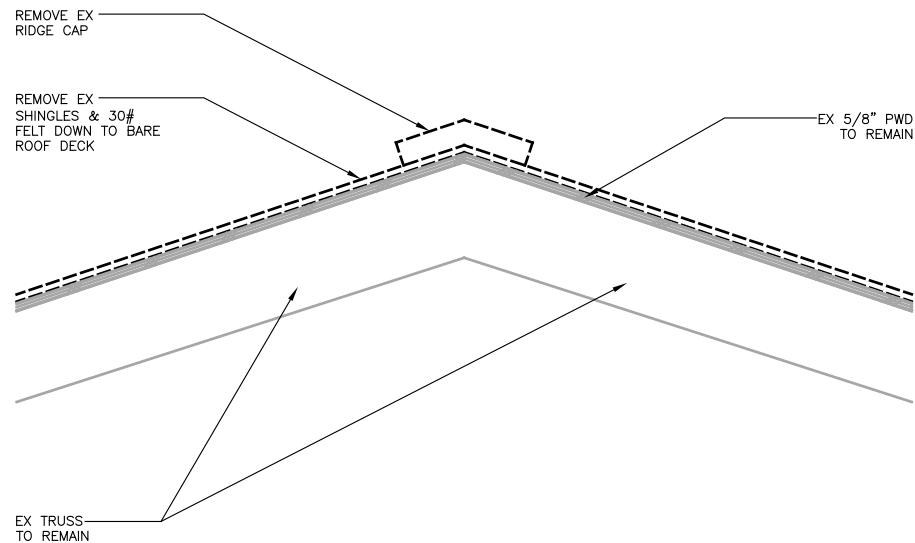
NOTE:
THESE DRAWINGS ARE BASED ON A LIMITED AMOUNT OF INFORMATION ABOUT AN EXISTING BUILDING. THE CONTRACTOR MUST FIELD VERIFY ALL INFORMATION SHOWN AND NOTIFY THE ARCHITECT OF ANY DISCREPANCY PRIOR TO MODIFICATION



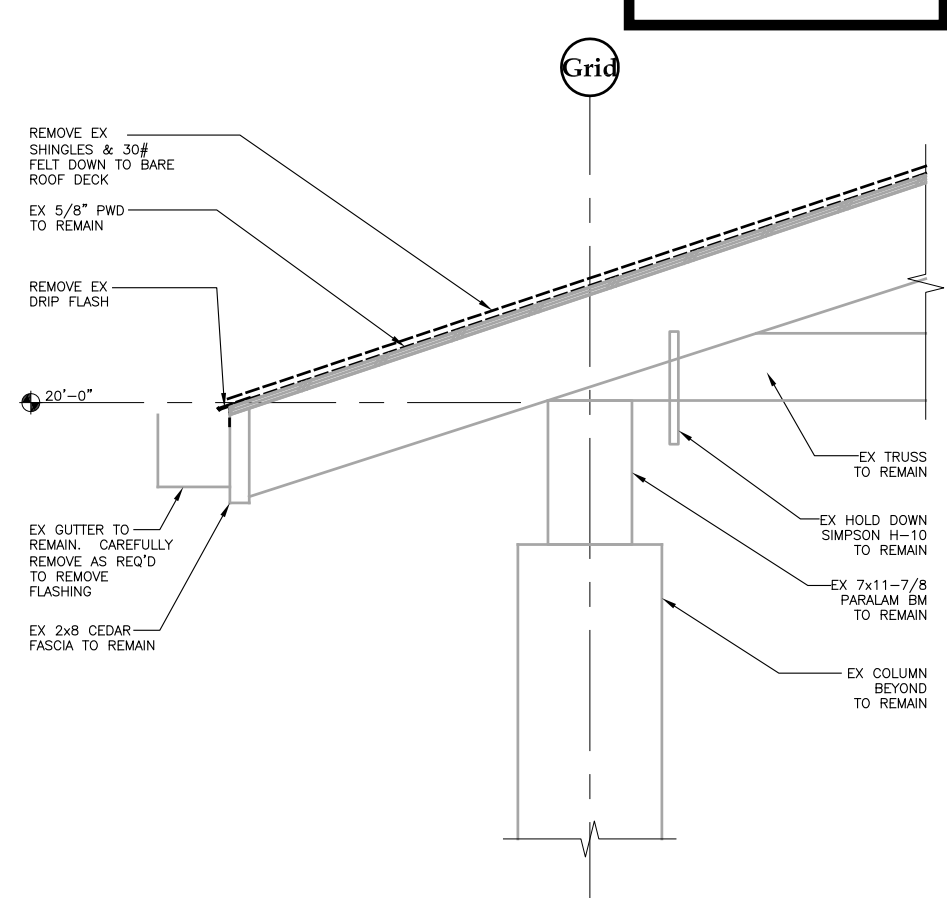
1 EAVE @ 2x8 WALL
17058/AD801-1
SCALE: 0 6" 1' 2'



4 RAKE
17058/AD801-4
SCALE: 0 6" 1' 2'

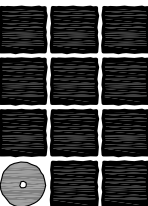


5 RIDGE
17058/AD801-5
SCALE: 0 6" 1' 2'



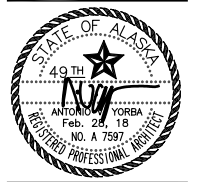
3 EAVE @ OPEN WALL
1705/AD801-3
SCALE: 0 6" 1' 2'

ALTERNATE BID



**Jensen
Yorba
Lott
Inc.**


522 West 10th Street
Juneau, Alaska 99801
phone 907-586-1070
fax 907-586-3959
jensenyorbalott.com



City and Borough of Juneau
Juneau Skate Park
Roof Replacement
CBJ Contract No. BE18-150
Juneau, Alaska

REVISIONS
△
△
△
SHEET TITLE
DEMOLITION EXTERIOR DETAILS
DATE: February, 2018
FILE: 17058

AD801



522 West 10th Street
 Juneau, Alaska 99801
 phone 907-586-1070
 fax 907-586-3959
 jensenyorbalott.com

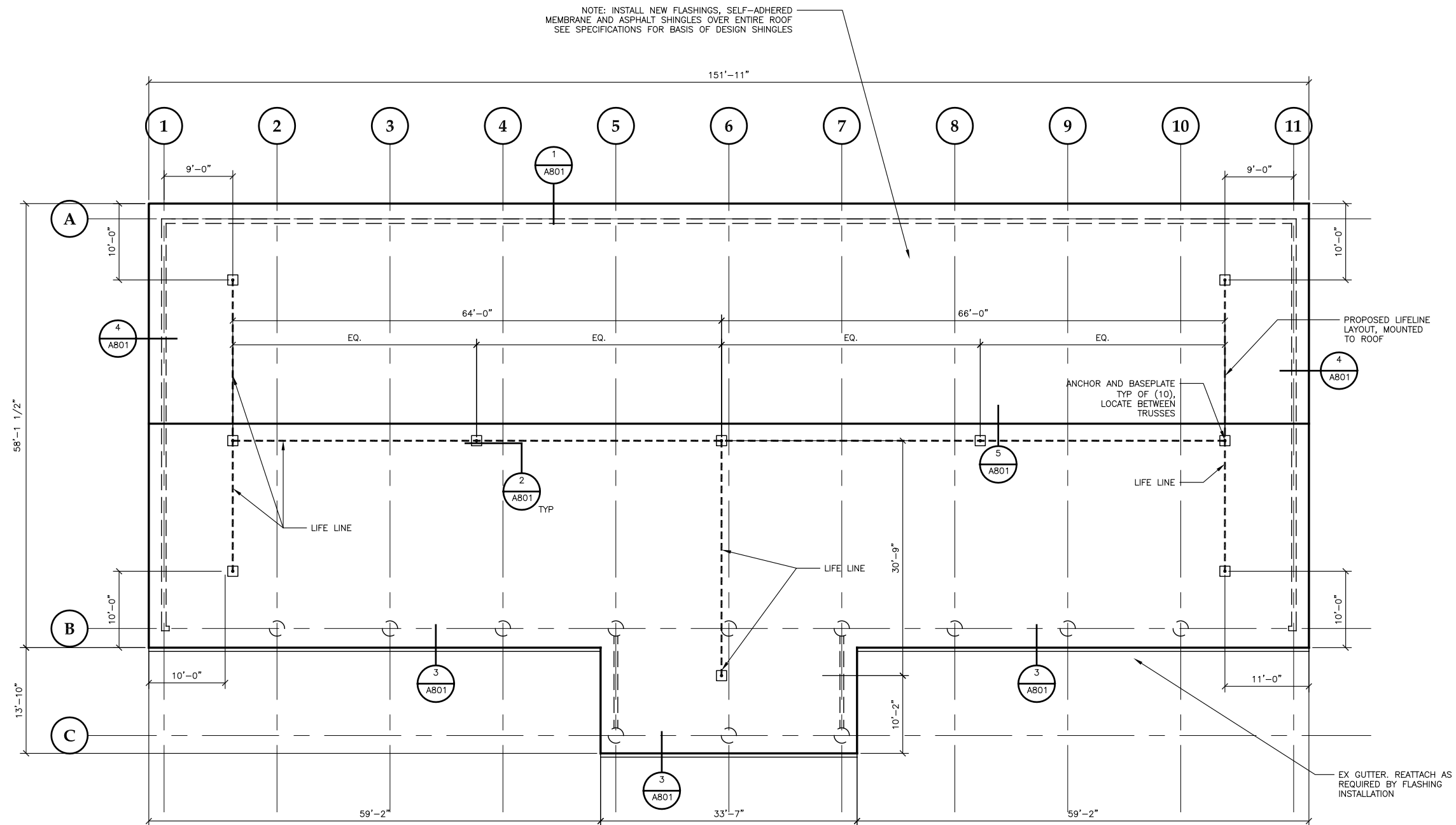


City and Borough of Juneau
Juneau Skate Park
Roof Replacement
CBJ Contract No. BE18-150
Juneau, Alaska

•
•
•

-
-
-

A201



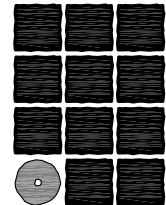
NOTE:
THESE DRAWINGS ARE BASED ON A LIMITED AMOUNT
OF INFORMATION ABOUT AN EXISTING BUILDING.
THE CONTRACTOR MUST FIELD VERIFY ALL INFORMATION
SHOWN AND NOTIFY THE ARCHITECT OF ANY
DISCREPANCY PRIOR TO MODIFICATION

1 ROOF PLAN

SCALE: 0 4' 8' 16'

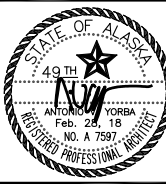


ALTERNATE BID



**Jensen
Yorba
Lott**
Inc.

522 West 10th Street
Juneau, Alaska 99801
phone 907-586-1070
fax 907-586-3959
jensenyorbalott.com



City and Borough of Juneau
Juneau Skate Park
Roof Replacement
CBJ Contract No. BE18-150
Juneau, Alaska

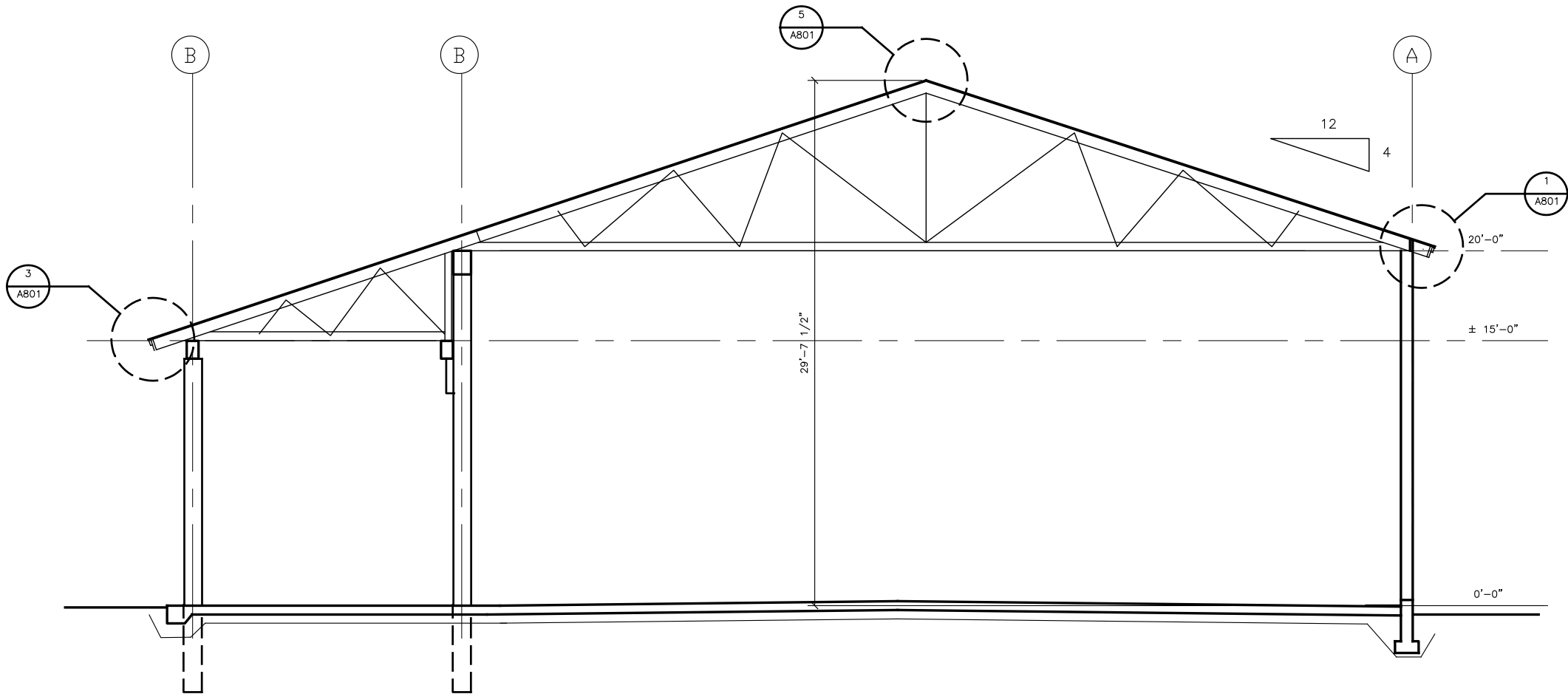
REVISIONS

△	.
△	.
△	.

SHEET TITLE
BUILDING SECTION

DATE: February, 2018
FILE: 17058

A301

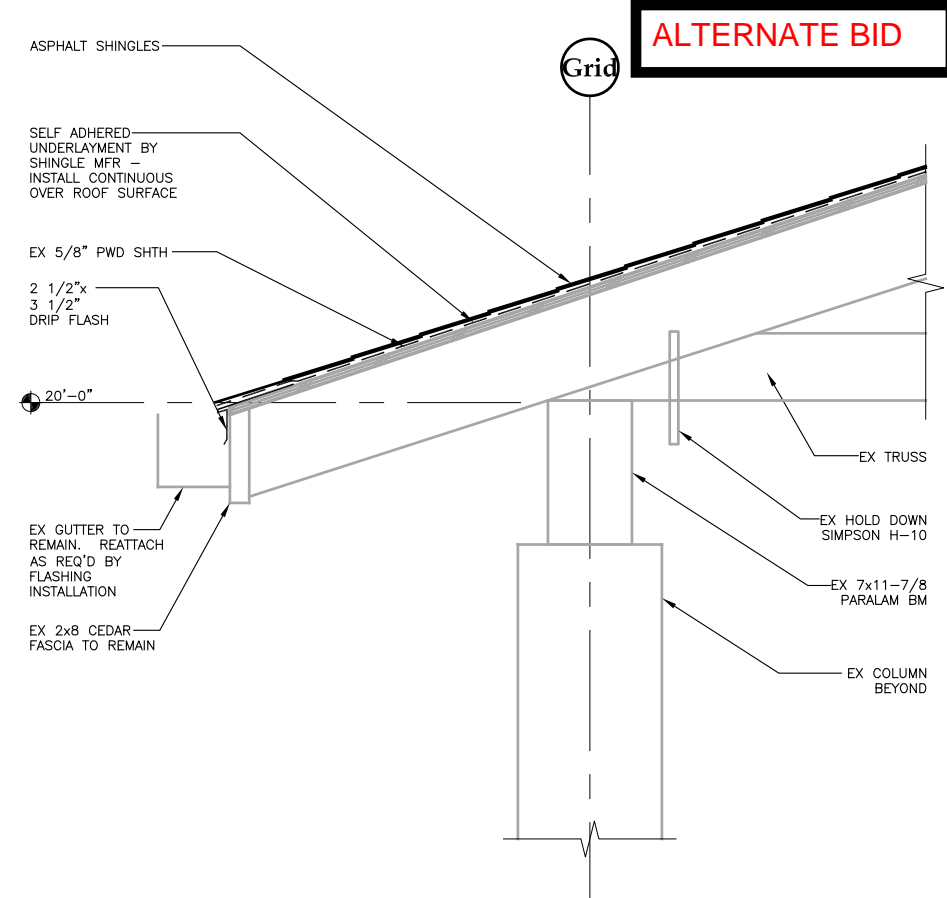
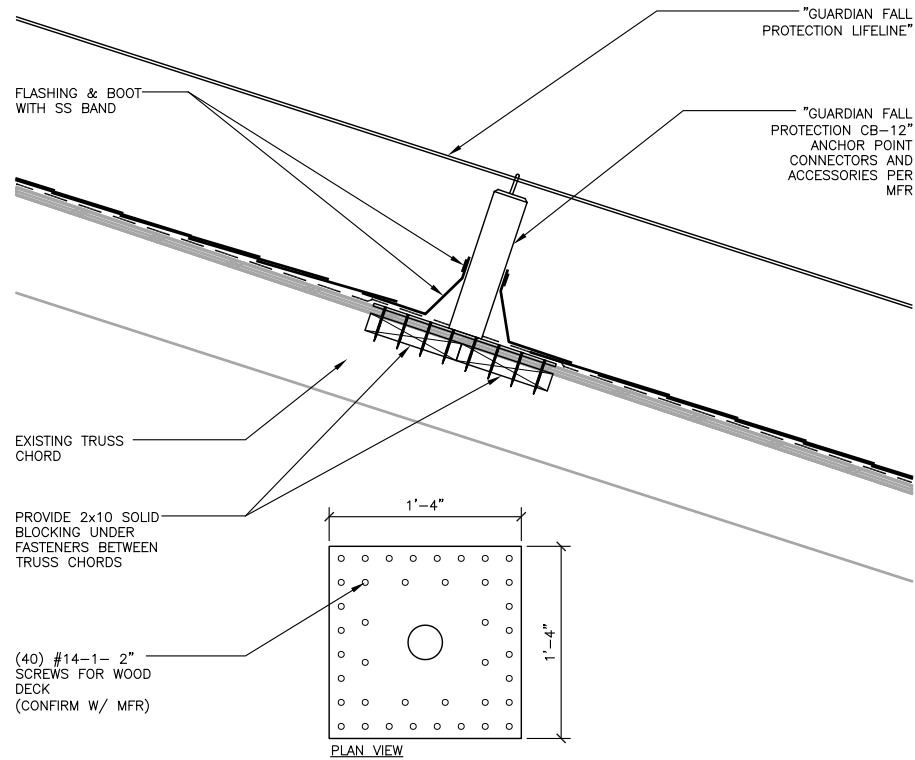
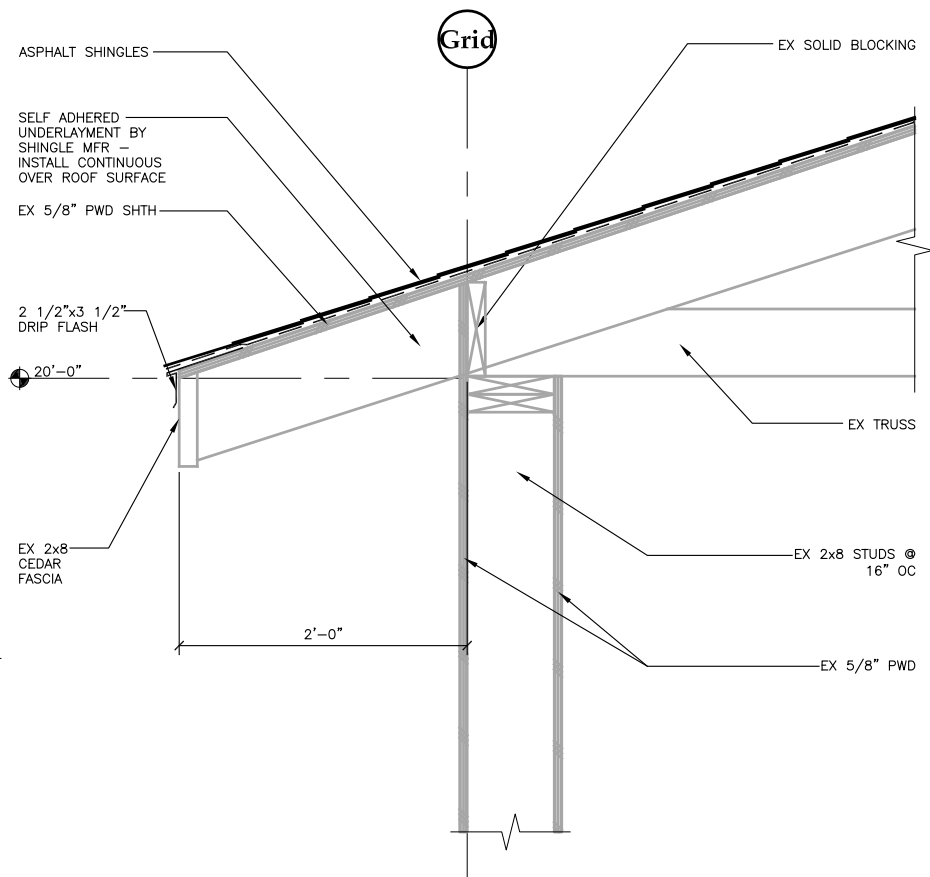


1 BUILDING SECTION

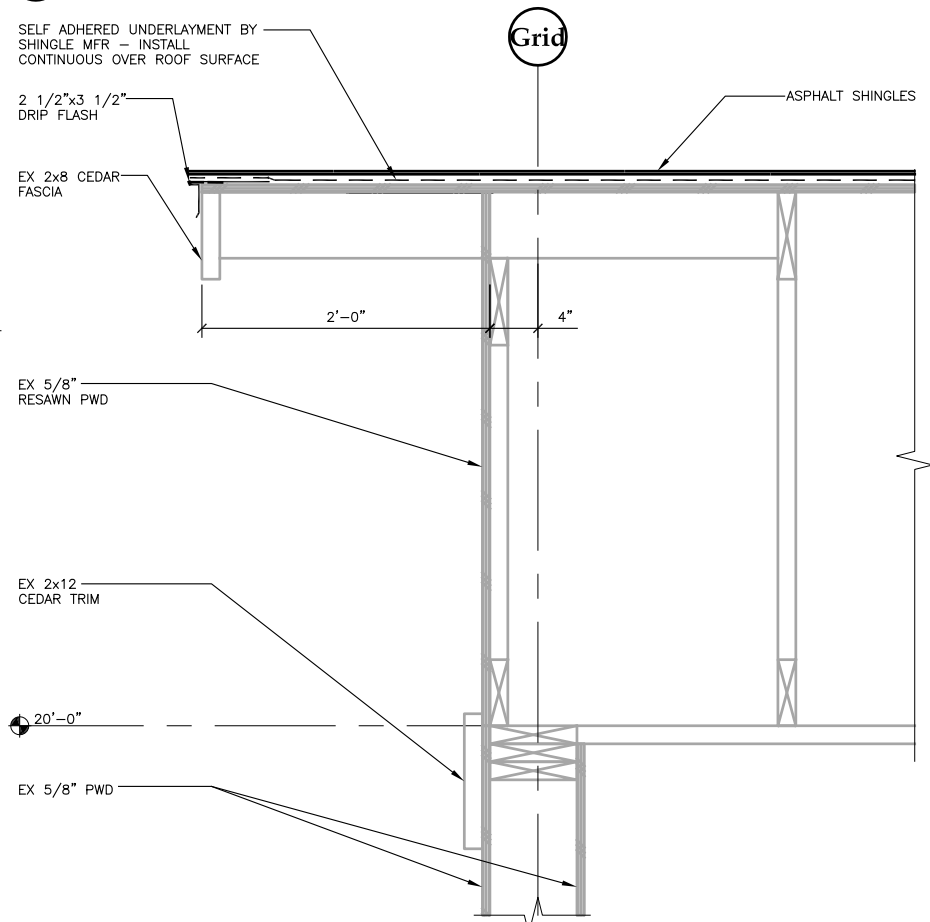
SCALE: 0 2' 4' 8'



NOTE:
THESE DRAWINGS ARE BASED ON A LIMITED AMOUNT
OF INFORMATION ABOUT AN EXISTING BUILDING.
THE CONTRACTOR MUST FIELD VERIFY ALL INFORMATION
SHOWN AND NOTIFY THE ARCHITECT OF ANY
DISCREPANCY PRIOR TO MODIFICATION

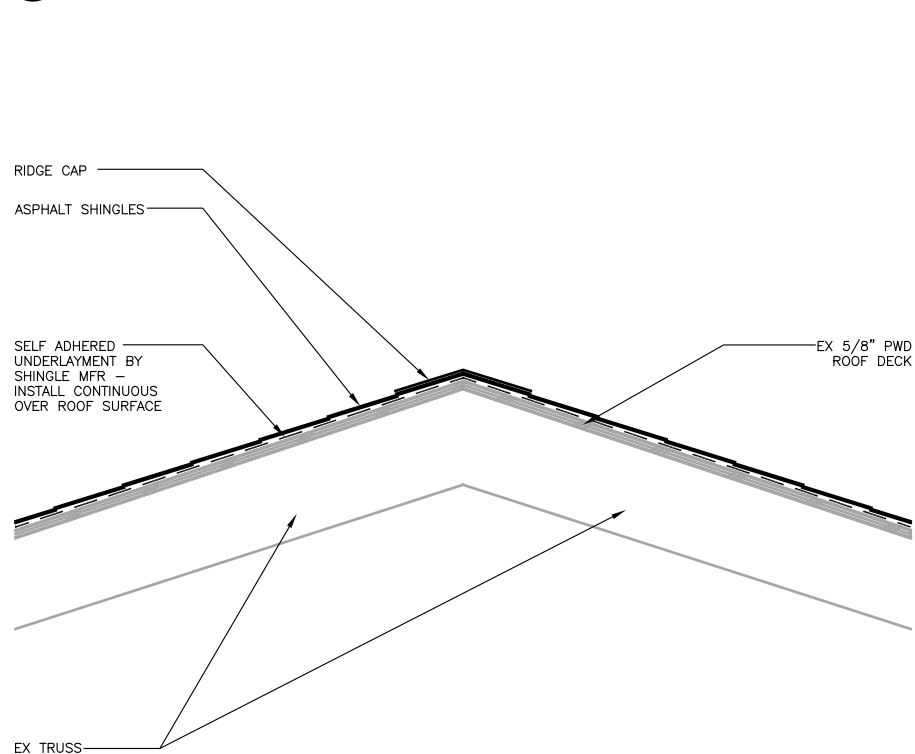


1 EAVE @ 2x8 WALL
17058/AD801-1
SCALE: 0 6" 1' 2'



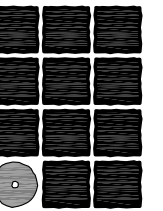
4 RAKE
17058/AD801-4
SCALE: 0 6" 1' 2'

2 FALL PROTECTION ANCHOR
17058/A801-2
SCALE: 0 6" 1' 2'



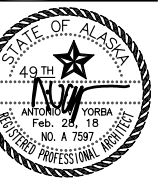
5 RIDGE
17058/AD801-5
SCALE: 0 6" 1' 2'

3 EAVE @ OPEN WALL
1705/AD801-3
SCALE: 0 6" 1' 2'



**Jensen
Yorba
Lott
Inc.**

522 West 10th Street
Juneau, Alaska 99801
phone 907-586-1070
fax 907-586-3959
jensenyorbalott.com



City and Borough of Juneau
Juneau Skate Park
Roof Replacement
CBJ Contract No. BE18-150
Juneau, Alaska

REVISIONS

△	
△	
△	

SHEET TITLE
**EXTERIOR
DETAILS**

DATE: February, 2018
FILE: 17058

A801

City and Borough of Juneau
Douglas Fire Hall and Library
Roof Renovation
CBJ Contract No. BE18-150
Juneau, Alaska
February 27, 2017

BASE BID

GENERAL NOTE

THESE IMAGES/DRAWINGS HAVE BEEN DIGITALLY REPRODUCED BASED ON INFORMATION AND MATERIALS SUBMITTED IN PART BY OTHERS. WHILE THIS INFORMATION IS BELIEVED TO BE RELIABLE, JENSEN YORBA LOTT, INC. IS NOT RESPONSIBLE FOR ITS ACCURACY NOR FOR THE ERRORS AND OMISSIONS WHICH MAY HAVE BEEN INCORPORATED INTO THIS DOCUMENT AS A RESULT. CONTRACTOR SHOULD SITE VERIFY EXISTING CONDITIONS PRIOR TO BEGINNING ANY WORK.

ARCHITECT
JENSEN YORBA LOTT, INC
522 WEST 10TH STREET
JUNEAU, ALASKA 99801
(907) 586-1070
FAX (907) 586-3959

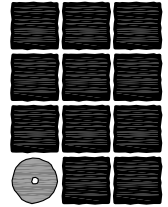
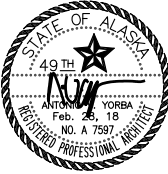
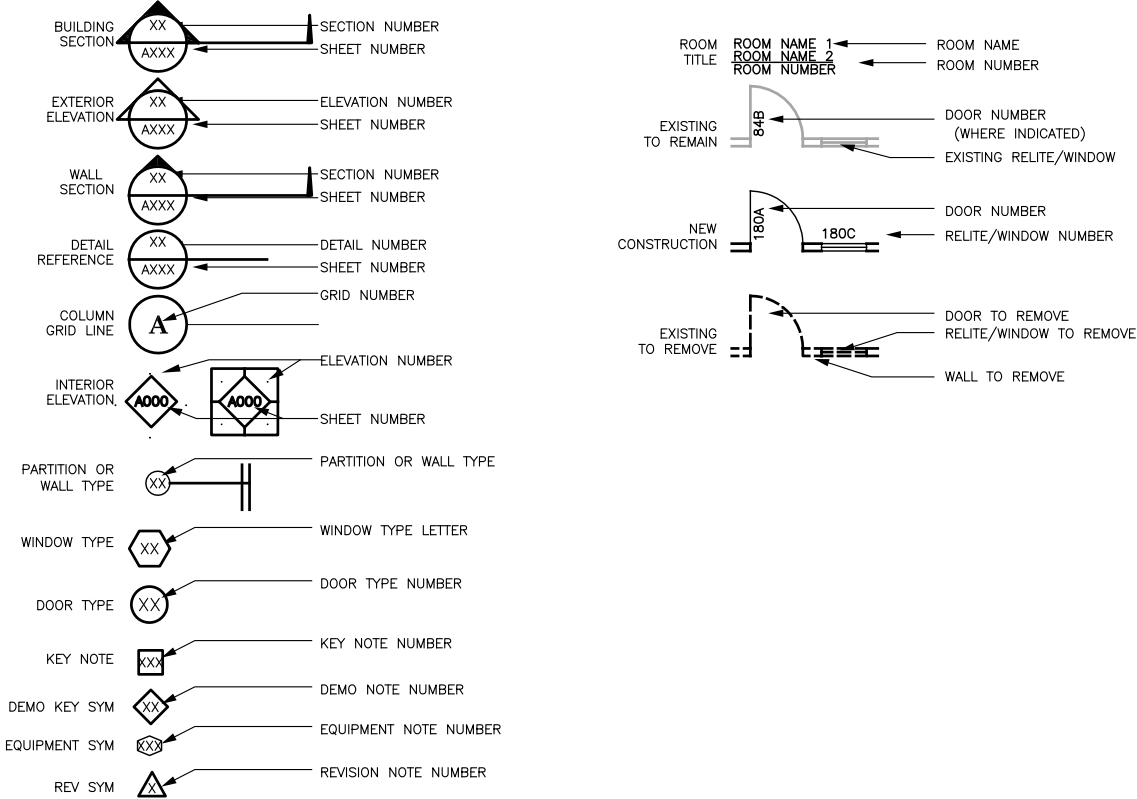
SHEET INDEX

A001 COVER SHEET
A101 SITE PLAN
AD201 DEMOLITION ROOF PLAN
AD301 DEMOLITION BUILDING SECTION
AD801 DEMOLITION EXTERIOR DETAILS
AD802 DEMOLITION EXTERIOR DETAILS
A201 ROOF PLAN
A301 BUILDING SECTION
A801 EXTERIOR DETAILS
A802 EXTERIOR DETAILS

ABBREVIATIONS

Z	ANGLE	EMER	EMERGENCY	JAN	JANITOR	REINF	REINFORCED	UR	URINAL
AC	ASPHALT CONCRETE	ENCL	ENCLOSURE	JT	JOINT	REQ	REQUIRED	VERT	VERTICAL
ACM	ASBESTOS CONTAINING MATERIAL	EPDM	ETHYLENE PROPYLENE DIANE MONOMER	LAB	LABORATORY	RESIL	RESILIENT	VEST	VESTIBULE
ACP	ACOUSTICAL CEILING PANEL	EQ	EQUAL	LAM	LAMINATE	RH	ROBE HOOK	VR	VAPOR RETARDER
ADJ	ADJUSTABLE	EQP	EQUAL EQUIPMENT	LAV	LAVATORY	RL	RAIN LEADER	VTR	VENT THROUGH ROOF
AFF	ABOVE FINISH FLOOR	EX	EXISTING	LB	POUND	RM	ROOM		
AIB	AIR INFILTRATION BARRIER	EXT	EXTERIOR	LT	LIGHT	RO	ROUGH OPENING		
AL	ALUMINUM			MIR	MIRROR	RUB	RUBBER	WB	WEATHER BARRIER
APPROX	APPROXIMATE	FA	FIRE ALARM	MAX	MAXIMUM			WC	WATER CLOSET
ARCH	ARCHITECTURAL	FD	FLOOR DRAIN	MDO	MEDIUM DENSITY OVERLAID	SASU	SELF ADHERING SHEET UNDERLAYMENT	WD	WOOD
ASB	ASBESTOS	FDN	FOUNDATION	MECH	MECHANICAL	SCD	SEAT COVER DISPENSER	WP	WATERPROOF
		FEC	FIRE EXTINGUISHER CABINET	MEMB	MEMBRANE	SCHED	SCHEDULE	WR	WASTE RECEPTACLE
BD	BOARD	FF	FINISH FLOOR	MFR	MANUFACTURER	SF	SQUARE FOOT	WSCT	WAINSCOT
BLDG	BUILDING	FHC	FIRE HOSE CABINET	MH	MANHOLE	SFRM	SPRAYED FIRE-RESISTIVE MATERIAL	WT	WEIGHT
BLKG	BLOCKING	FIN	FINISH	MIN	MINIMUM			WWF	WELDED WIRE FABRIC
BM	BEAM	FLASH	FLASHING	MISC	MISCELLANEOUS	SHR	SHOWER		
BOT	BOTTOM	FLR	FLOOR	MTD	MOUNTED	SHTH	SHEATHING		
		FOC	FACE OF CONCRETE/CURB	MTL	METAL	SIM	SIMILAR		
CAB	CABINET	FOS	FACE OF FINISH	MUL	MULLION	SND	SANITARY NAPKIN DISPENSER		
CB	CATCH BASIN	FRP	FACE OF STUD (GLASS) FIBER REINFORCED PLASTIC			SNR	SANITARY NAPKIN RECEPTACLE		
CEM	CEMENT			NIC	NOT IN CONTRACT	SPEC	SPECIFICATIONS		
CG	CORNER GUARD			NO OR #	NUMBER	SQ	SQUARE		
CI	CAST IRON			NOM	NOMINAL	SQFT	SQUARE FOOT		
CLG	CEILING			NTS	NOT TO SCALE	SQYD	SQUARE YARD		
COL	COLUMN	FR	FIRE RETARDANT			SS	STAINLESS STEEL		
CONC	CONCRETE	FT	FOOT OR FEET	OA	OVERALL	STA	STATION		
CONT	CONTINUOUS	FTG	FOOTING	OC	ON CENTER	STC	SOUND TRANSMISSION CLASS		
CTR	CENTER	FURR	FURRING	OD	OUTSIDE DIAMETER	STD	STANDARD		
CTSK	COUNTERSUNK			OFCI	OWNER FURNISHED CONTRACTOR INSTALLED	STL	STEEL		
		GA	GAUGE			STOR	STORAGE		
DBL	DOUBLE	GALV	GALVANIZED			STRUC	STRUCTURAL		
DEPT	DEPARTMENT	GB	GRAB BAR	OFOI	OWNER FURNISHED CONTRACTOR INSTALLED	SUSP	SUSPENDED		
DF	DRINKING FOUNTAIN	GL	GLASS			SY	SQUARE YARD		
DET	DETAIL	GWB	GYPSPUM WALL BOARD	OFD	OVERFLOW DRAIN				
DIA	DIAMETER	GYP	GYPSPUM	OFF	OFFICE	OPNG	OPENING		
DIM	DIMENSION			OSB	ORIENTED STRAND BOARD	OPP	OPPOSITE		
DISP	DISPENSER	HB	HOSE BIBB			OSB	ORIENTED STRAND BOARD		
DN	DOWN	HOWD	HARDWOOD			PL	PLATE		
DR	DOOR	HM	HOLLOW METAL			PLAM	PLASTIC LAMINATE		
DS	DOWNSPOUT	HORIZ	HORIZONTAL			PLAS	PLASTER		
DWG	DRAWING	HR	HOUR			PC	PRE-CAST		
DWR	DRAWER	HT	HEIGHT			PF	PRE-FINISHED		
		HW	HOT WATER			PR	PAIR		
EA	EACH					PWD	PLYWOOD		
EF	EXHAUST FAN	ID	INSIDE DIAMETER			R	RISER		
EFIS	EXTERIOR INSULATION & FINISH SYSTEM	INSUL	INSULATION			RAD	RADIUS		
EJ	EXPANSION JOINT	INT	INTERIOR			RD	ROOF DRAIN		
EL	ELEVATION	IRMA	INVERTED ROOF MEMBRANE ASSEMBLY			REF	REFERENCE		
ELEC	ELECTRICAL					REFR	REFRIGERATOR		
ELEV	ELEVATOR							UL	UNDERWRITERS LABORATORIES
								UNF	UNFINISHED
								UON	UNLESS OTHERWISE NOTED

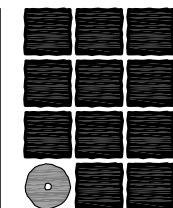
SYMBOLS



Jensen
Yorba
Lott
Inc.

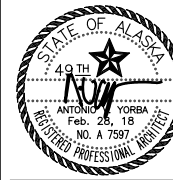
522 West 10th Street
Juneau, Alaska 99801
phone 907-586-1070
fax 907-586-3959
jensenyorbalott.com
FILE: 17036

A001



**Jensen
Yorba
Lott
Inc.**

522 West 10th Street
Juneau, Alaska 99801
phone 907-586-1070
fax 907-586-3959
jensenyorbalott.com



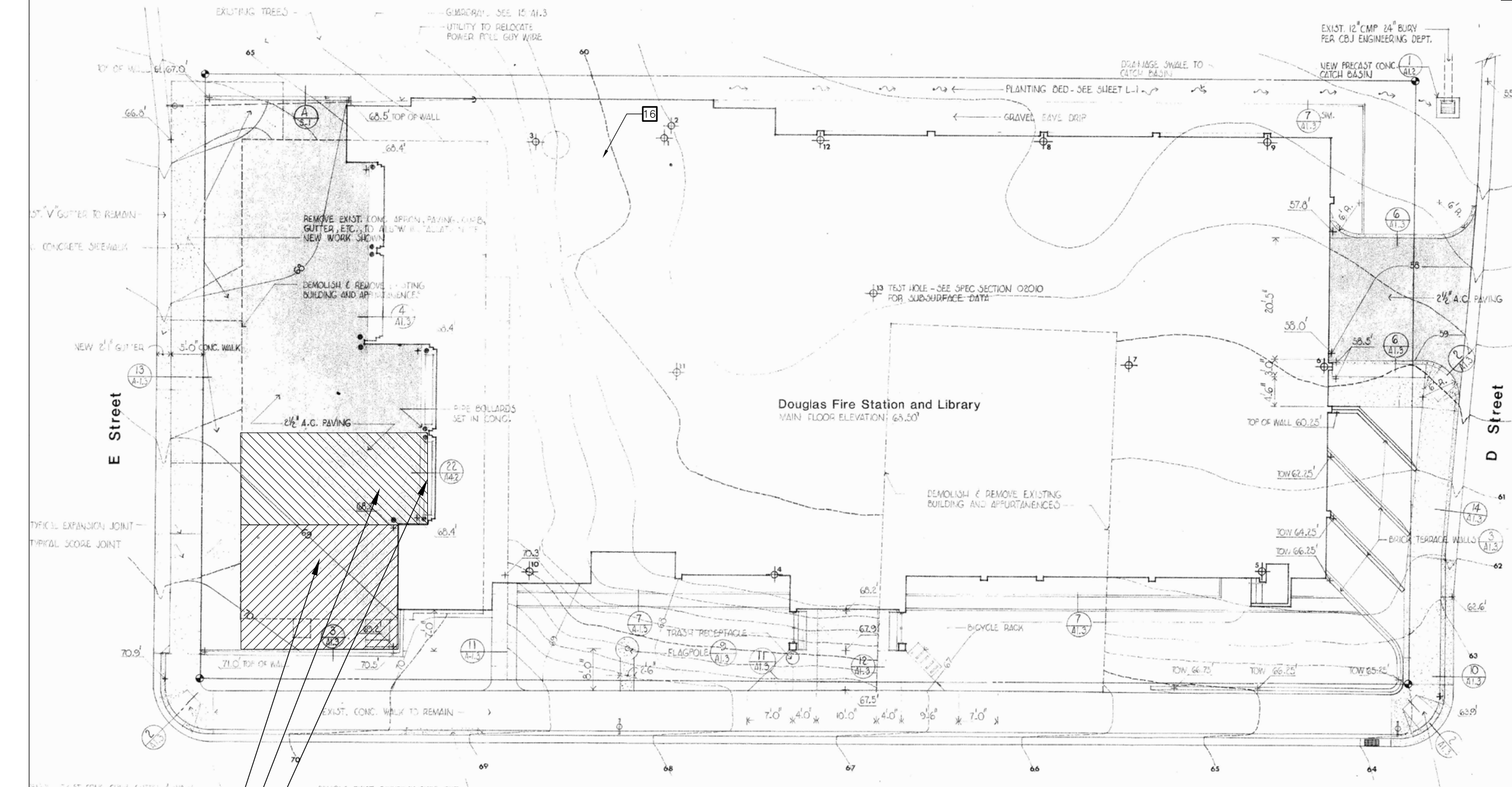
City and Borough of Juneau
Douglas Fire Hall and Library
Roof Renovation
CBJ Contract No. BE18-150
Juneau, Alaska

REVISIONS

SHEET TITLE
SITE PLAN

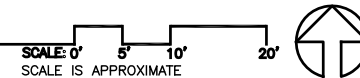
DATE: February 28, 2018
FILE: 17036

A101



CONTRACTOR STAGING
ALSO CONTRACTOR STAGING?
APPARATUS BAY DOOR

1 SITE PLAN



GENERAL NOTE

THESE IMAGES/DRAWINGS HAVE BEEN DIGITALLY REPRODUCED BASED ON INFORMATION AND MATERIALS SUBMITTED IN PART BY OTHERS. WHILE THIS INFORMATION IS BELIEVED TO BE RELIABLE, JENSEN YORBA LOTT, INC. IS NOT RESPONSIBLE FOR ITS ACCURACY NOR FOR THE ERRORS AND OMISSIONS WHICH MAY HAVE BEEN INCORPORATED INTO THIS DOCUMENT AS A RESULT. CONTRACTOR SHOULD SITE VERIFY EXISTING CONDITIONS PRIOR TO BEGINNING ANY WORK.

BASE BID

DEMOLITION KEY NOTES:

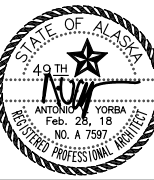
THE KEY NOTES LISTED BELOW ARE PROJECT SPECIFIC
AND MAY NOT BE SPECIFIC TO THIS SHEET.

- 1 REMOVE EXISTING CEDAR SHINGLES, FASTENERS & UNDERLAYMENT TO EX SASU
- 2 EXISTING SASU TO REMAIN
- 3 EXISTING 5/8" TRTD PLYWOOD TO REMAIN
- 4 EXISTING ROOF SUBSTRATE ASSEMBLY TO REMAIN
- 5 REMOVE EXISTING FLASHING & FASTENERS
- 6 EXISTING GUTTER, CAREFULLY REMOVE AS REQUIRED BY FLASHING REMOVAL & SALVAGE FOR REINSTALLATION
- 7 WOOD TRIM TO REMAIN
- 8 REMOVE & SALVAGE COPING FOR RE-INSTALLATION
- 9 METAL BACKING ANGLE TO REMAIN
- 10 EXISTING METAL SIDING & EDGE FLASHING TO REMAIN
- 11 REMOVE EXISTING ROOF TO WALL FLASHING & SALVAGE FOR RE-INSTALLATION
- 12 CUT \pm 17"x17" OPENING IN EXISTING ROOF DOWN TO BARE STEEL DECK FOR FALL PROTECTION SEE 2/A802
- 13 APPROXIMATE LOCATION OF ACCESS HATCH TO ATTIC, USE FOR INSTALLATION OF INSULATION SEE 1/A301
- 14 EXISTING ROOF MOUNTED MECHANICAL EQUIPMENT
- 15 EXISTING ROOF LADDER
- 16 EXISTING DOWNSPOUT AND ASSOCIATED HARDWARE.



Jensen
Yorba
Lott

522 West 10th Street
 Juneau, Alaska 99801
 phone 907-586-1070
 fax 907-586-3959
jensenyorbalott.com



City and Borough of Juneau
Douglas Fire Hall and Library
Roof Renovation
CBJ Contract No. BE18-150

GENERAL NOTE

THESE IMAGES/DRAWINGS HAVE BEEN DIGITALLY REPRODUCED
BASED ON INFORMATION AND MATERIALS SUBMITTED IN PART
BY OTHERS. WHILE THIS INFORMATION IS BELIEVED TO BE
RELIABLE, JENSEN YORBA LOTT, INC. IS NOT RESPONSIBLE
FOR ITS ACCURACY NOR FOR THE ERRORS AND OMISSIONS
WHICH MAY HAVE BEEN INCORPORATED INTO THIS DOCUMENT
AS A RESULT. CONTRACTOR SHOULD SITE VERIFY EXISTING
CONDITIONS PRIOR TO BEGINNING ANY WORK.

REVISIONS



DEMOLITION
ROOF PLAN

DATE: February 28, 2018

LE: 17036

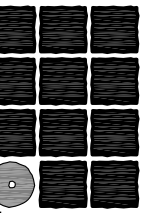
AD201

BASE BID

DEMOLITION KEY NOTES:

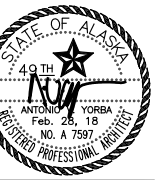
THE KEY NOTES LISTED BELOW ARE PROJECT SPECIFIC AND MAY NOT BE SPECIFIC TO THIS SHEET.

- 1 REMOVE EXISTING CEDAR SHINGLES, FASTENERS & UNDERLAYMENT TO EX SASU
- 2 EXISTING SASU TO REMAIN
- 3 EXISTING 5/8" TRTD PLYWOOD TO REMAIN
- 4 EXISTING ROOF SUBSTRATE ASSEMBLY TO REMAIN
- 5 REMOVE EXISTING FLASHING & FASTENERS
- 6 EXISTING GUTTER, CAREFULLY REMOVE AS REQUIRED BY FLASHING REMOVAL & SALVAGE FOR REINSTALLATION
- 7 WOOD TRIM TO REMAIN
- 8 REMOVE & SALVAGE COPING FOR RE-INSTALLATION
- 9 METAL BACKING ANGLE TO REMAIN
- 10 EXISTING METAL SIDING & EDGE FLASHING TO REMAIN
- 11 REMOVE EXISTING ROOF TO WALL FLASHING & SALVAGE FOR RE-INSTALLATION
- 12 CUT ± 17"x17" OPENING IN EXISTING ROOF DOWN TO BARE STEEL DECK FOR FALL PROTECTION SEE 2/A802
- 13 APPROXIMATE LOCATION OF ACCESS HATCH TO ATTIC, USE FOR INSTALLATION OF INSULATION SEE 1/A301
- 14 EXISTING ROOF MOUNTED MECHANICAL EQUIPMENT
- 15 EXISTING ROOF LADDER
- 16 EXISTING DOWNSPOUT AND ASSOCIATED HARDWARE.



**Jensen
Yorba
Lott
Inc.**

522 West 10th Street
Juneau, Alaska 99801
phone 907-586-1070
fax 907-586-3959
jensenyorbalott.com



City and Borough of Juneau
Douglas Fire Hall and Library
Roof Renovation
CBJ Contract No. BE18-150
Juneau, Alaska

REVISIONS



SHEET TITLE

DEMOLITION
BUILDING
SECTION

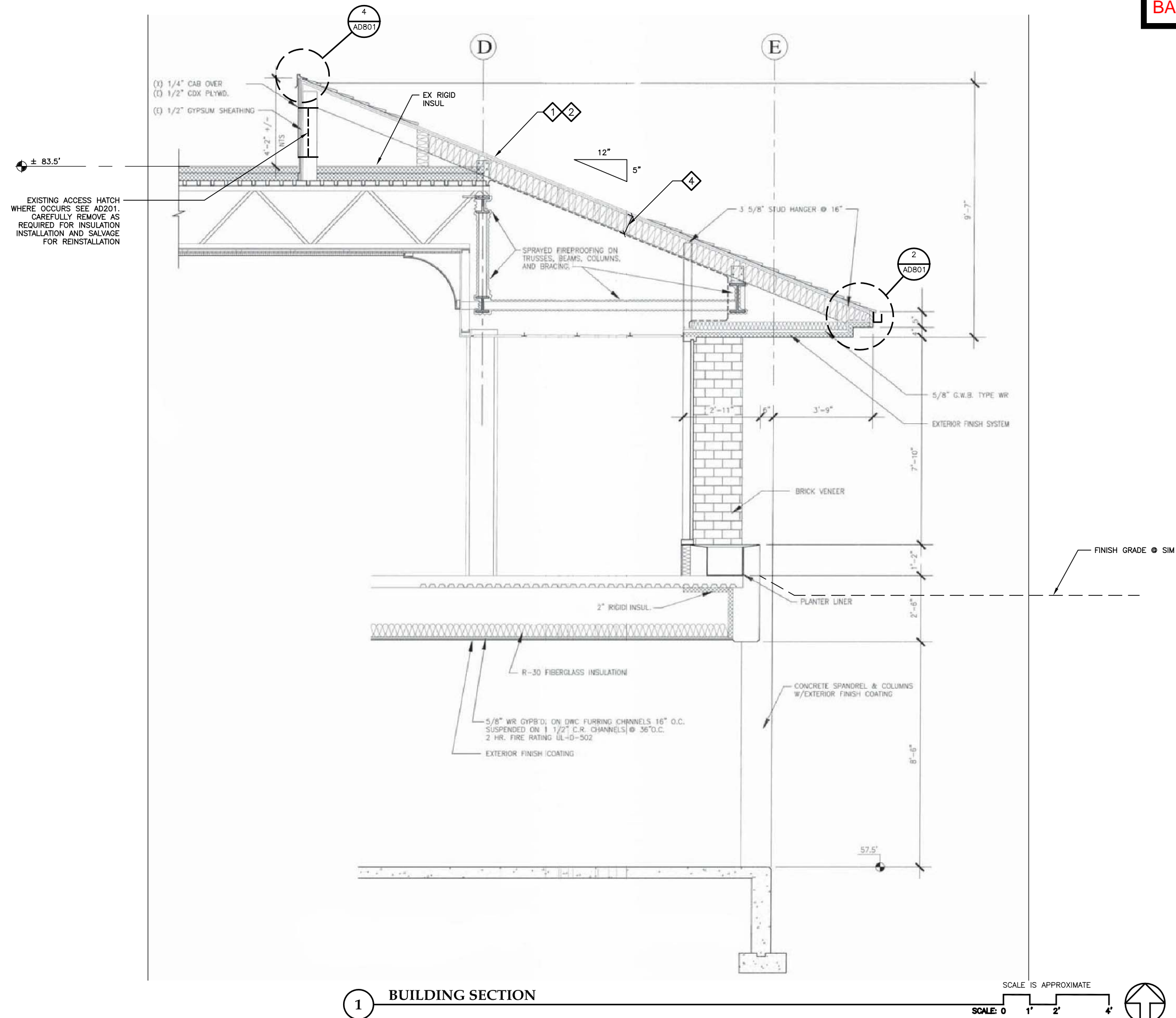
DATE: February 28, 2018

FILE: 17036

AD301

GENERAL NOTE

THESE IMAGES/DRAWINGS HAVE BEEN DIGITALLY REPRODUCED BASED ON INFORMATION AND MATERIALS SUBMITTED IN PART BY OTHERS. WHILE THIS INFORMATION IS BELIEVED TO BE RELIABLE, JENSEN YORBA LOTT, INC. IS NOT RESPONSIBLE FOR ITS ACCURACY NOR FOR THE ERRORS AND OMISSIONS WHICH MAY HAVE BEEN INCORPORATED INTO THIS DOCUMENT AS A RESULT. CONTRACTOR SHOULD SITE VERIFY EXISTING CONDITIONS PRIOR TO BEGINNING ANY WORK.

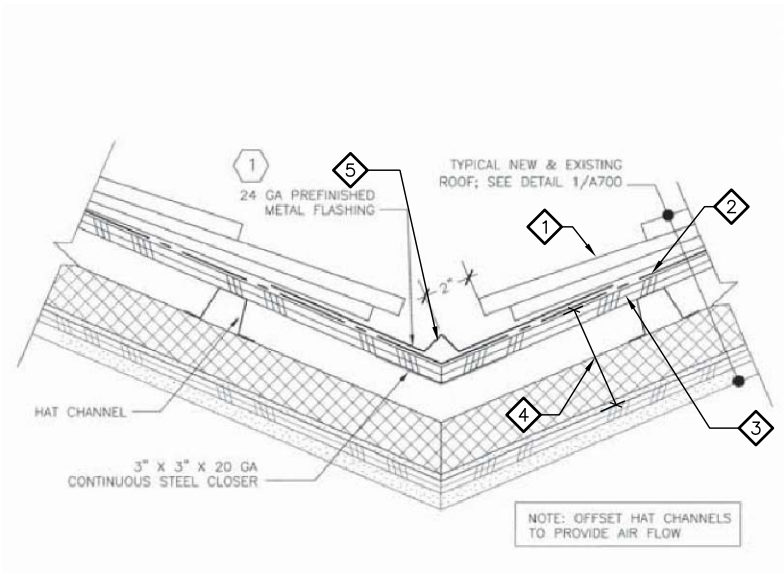


1 BUILDING SECTION

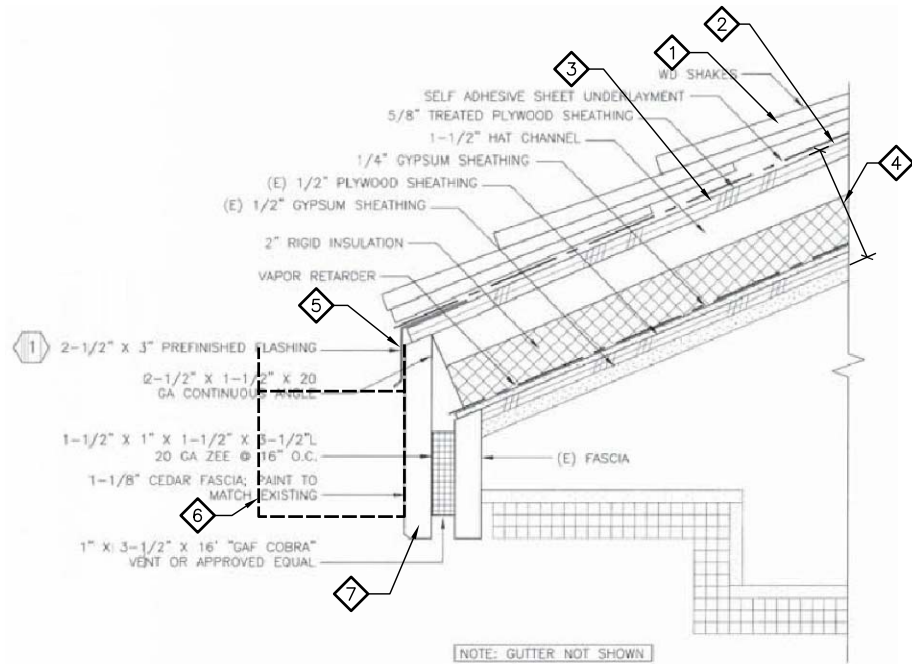
SCALE IS APPROXIMATE

SCALE: 0 1' 2' 4'

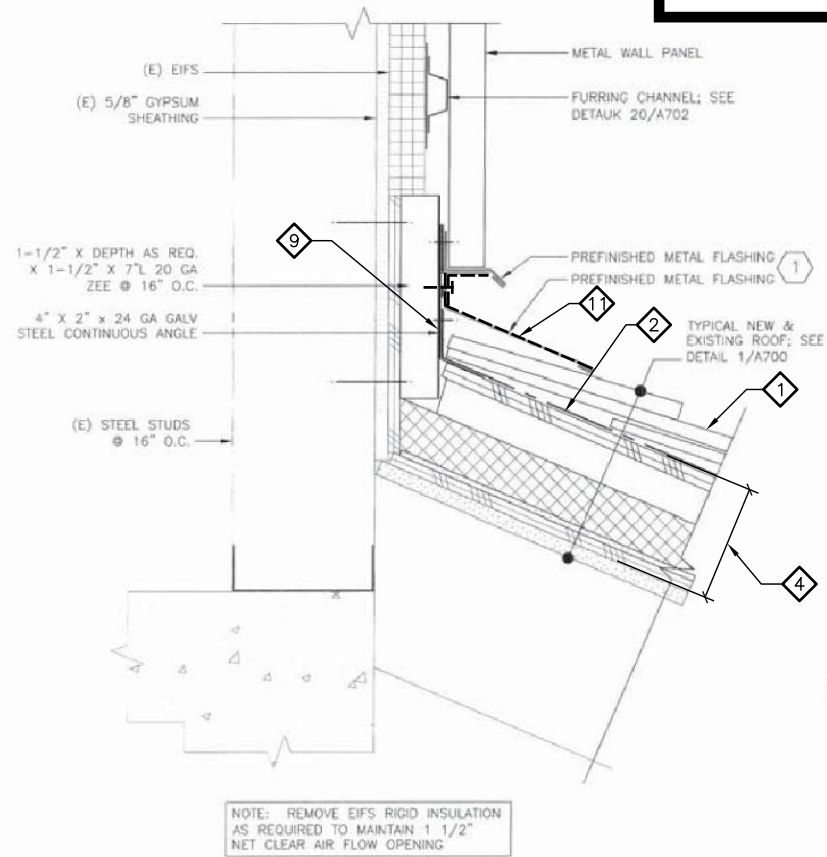




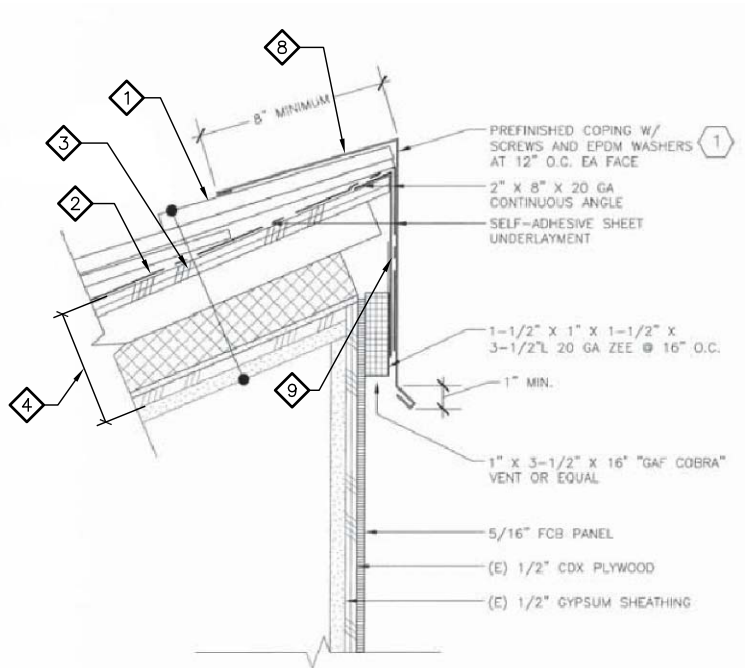
1 SHAKE ROOF VALLEY
17036
SCALE IS APPROXIMATE
SCALE: 0 3" 6" 1'



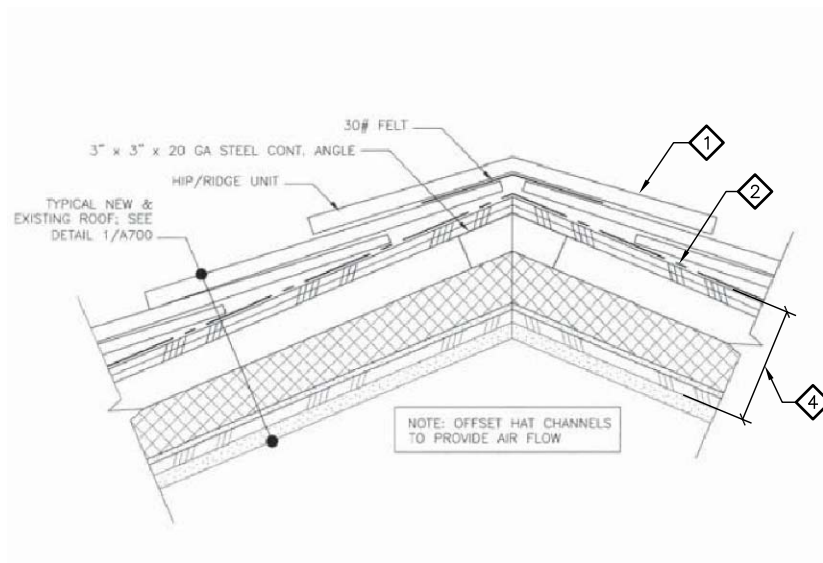
2 EAVE DETAIL
17036
SCALE IS APPROXIMATE
SCALE: 0 3" 6" 1'



3 ROOF TO WALL
17036
SCALE IS APPROXIMATE
SCALE: 0 3" 6" 1'



4 ROOF RAKE
17036
SCALE IS APPROXIMATE
SCALE: 0 3" 6" 1'



5 SHAKE ROOF RIDGE/HIP
17036
SCALE IS APPROXIMATE
SCALE: 0 3" 6" 1'

DEMOLITION KEY NOTES:

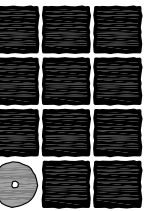
THE KEY NOTES LISTED BELOW ARE PROJECT SPECIFIC AND MAY NOT BE SPECIFIC TO THIS SHEET.

- 1 REMOVE EXISTING CEDAR SHINGLES, FASTENERS & UNDERLAYMENT TO EX SASU
- 2 EXISTING SASU TO REMAIN
- 3 EXISTING 5/8" TRTD PLYWOOD TO REMAIN
- 4 EXISTING ROOF SUBSTRATE ASSEMBLY TO REMAIN
- 5 REMOVE EXISTING FLASHING & FASTENERS
- 6 EXISTING GUTTER, CAREFULLY REMOVE AS REQUIRED BY FLASHING REMOVAL & SALVAGE FOR REINSTALLATION
- 7 WOOD TRIM TO REMAIN
- 8 REMOVE & SALVAGE COPING FOR RE-INSTALLATION
- 9 METAL BACKING ANGLE TO REMAIN
- 10 EXISTING METAL SIDING & EDGE FLASHING TO REMAIN
- 11 REMOVE EXISTING ROOF TO WALL FLASHING & SALVAGE FOR RE-INSTALLATION
- 12 CUT ± 17"x17" OPENING IN EXISTING ROOF DOWN TO BARE STEEL DECK FOR FALL PROTECTION SEE 2/A802
- 13 APPROXIMATE LOCATION OF ACCESS HATCH TO ATTIC, USE FOR INSTALLATION OF INSULATION SEE 1/A301
- 14 EXISTING ROOF MOUNTED MECHANICAL EQUIPMENT
- 15 EXISTING ROOF LADDER
- 16 EXISTING DOWNSPOUT AND ASSOCIATED HARDWARE.

GENERAL NOTE

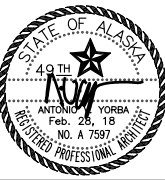
THESE IMAGES/DRAWINGS HAVE BEEN DIGITALLY REPRODUCED BASED ON INFORMATION AND MATERIALS SUBMITTED IN PART BY OTHERS. WHILE THIS INFORMATION IS BELIEVED TO BE RELIABLE, JENSEN YORBA LOTT, INC. IS NOT RESPONSIBLE FOR ITS ACCURACY NOR FOR THE ERRORS AND OMISSIONS WHICH MAY HAVE BEEN INCORPORATED INTO THIS DOCUMENT AS A RESULT. CONTRACTOR SHOULD SITE VERIFY EXISTING CONDITIONS PRIOR TO BEGINNING ANY WORK.

BASE BID



**Jensen
Yorba
Lott
Inc.**

522 West 10th Street
Juneau, Alaska 99801
phone 907-586-1070
fax 907-586-3959
jensenyorbalott.com



City and Borough of Juneau
Douglas Fire Hall and Library
Roof Renovation
CBJ Contract No. BE18-150
Juneau, Alaska

REVISIONS

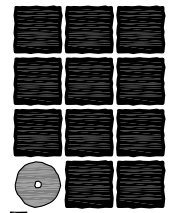


SHEET TITLE

DEMOLITION
EXTERIOR
DETAILS

DATE: February 28, 2018
FILE: 17036

AD801



**Jensen
Yorba
Lott
Inc.**

522 West 10th Street
Juneau, Alaska 99801
phone 907-586-1070
fax 907-586-3959
jensenyorbalott.com



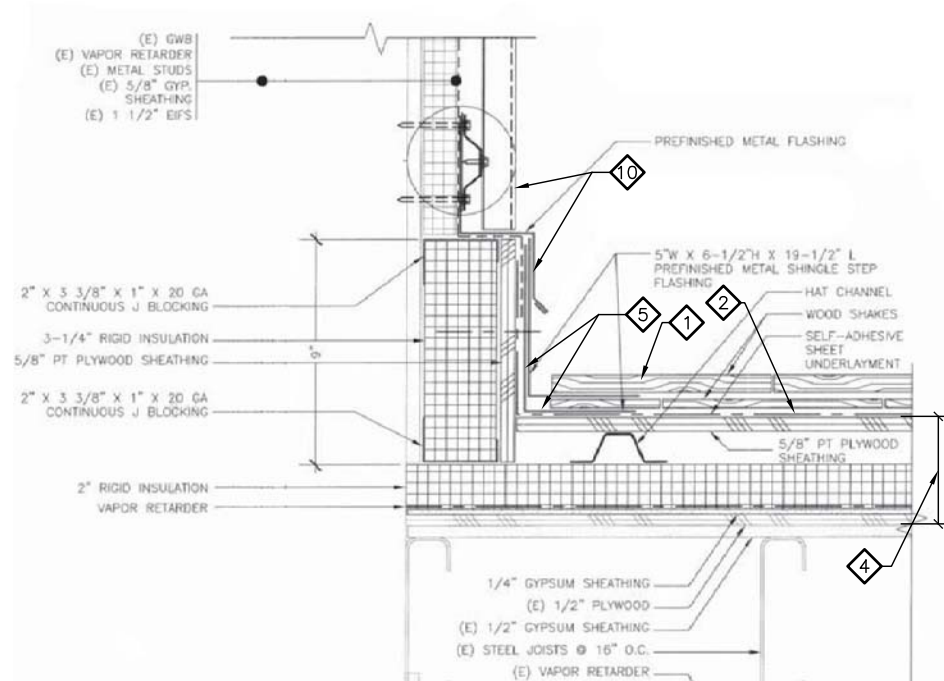
City and Borough of Juneau
Douglas Fire Hall and Library
Roof Renovation
CBJ Contract No. BE18-150
Juneau, Alaska

REVISIONS
△
△
△

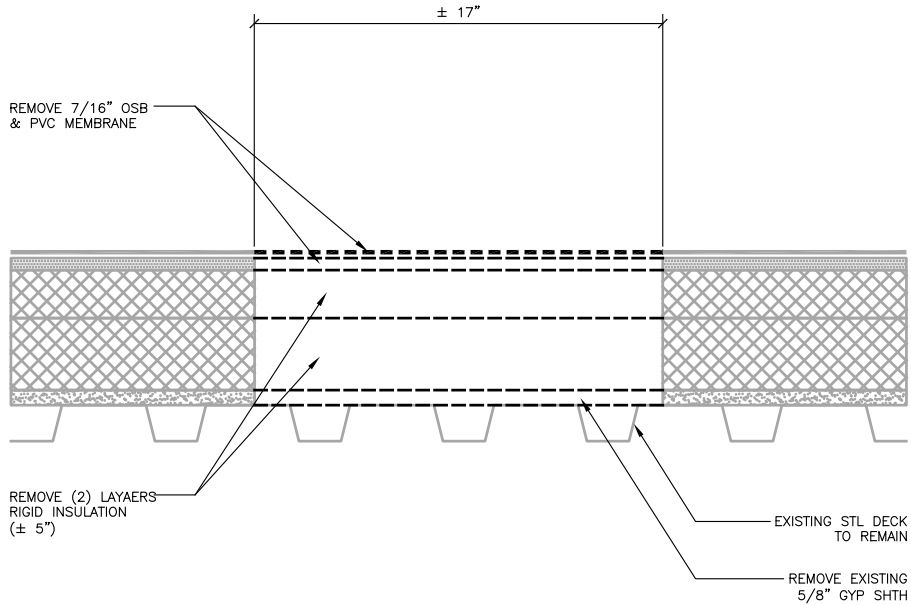
SHEET TITLE
**DEMOLITION
EXTERIOR
DETAILS**

DATE: February 28, 2018
FILE: 17036

AD802



1 ROOF TO WALL
17036
SCALE IS APPROXIMATE
SCALE: 0 3\"/>



2 DEMO @ FALL PROTECTION
17036/ AD802-2
SCALE: 0 3\"/>

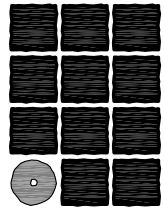
DEMOLITION KEY NOTES:

THE KEY NOTES LISTED BELOW ARE PROJECT SPECIFIC AND MAY NOT BE SPECIFIC TO THIS SHEET.

- 1 REMOVE EXISTING CEDAR SHINGLES, FASTENERS & UNDERLAYMENT TO EX SASU
- 2 EXISTING SASU TO REMAIN
- 3 EXISTING 5/8\"/>
- 4 EXISTING ROOF SUBSTRATE ASSEMBLY TO REMAIN
- 5 REMOVE EXISTING FLASHING & FASTENERS
- 6 EXISTING GUTTER, CAREFULLY REMOVE AS REQUIRED BY FLASHING REMOVAL & SALVAGE FOR REINSTALLATION
- 7 WOOD TRIM TO REMAIN
- 8 REMOVE & SALVAGE COPING FOR RE-INSTALLATION
- 9 METAL BACKING ANGLE TO REMAIN
- 10 EXISTING METAL SIDING & EDGE FLASHING TO REMAIN
- 11 REMOVE EXISTING ROOF TO WALL FLASHING & SALVAGE FOR RE-INSTALLATION
- 12 CUT ± 17\"/>
- 13 APPROXIMATE LOCATION OF ACCESS HATCH TO ATTIC, USE FOR INSTALLATION OF INSULATION SEE 1/A301
- 14 EXISTING ROOF MOUNTED MECHANICAL EQUIPMENT
- 15 EXISTING ROOF LADDER
- 16 EXISTING DOWNSPOUT AND ASSOCIATED HARDWARE.

GENERAL NOTE

THESE IMAGES/DRAWINGS HAVE BEEN DIGITALLY REPRODUCED BASED ON INFORMATION AND MATERIALS SUBMITTED IN PART BY OTHERS. WHILE THIS INFORMATION IS BELIEVED TO BE RELIABLE, JENSEN YORBA LOTT, INC. IS NOT RESPONSIBLE FOR ITS ACCURACY NOR FOR THE ERRORS AND OMISSIONS WHICH MAY HAVE BEEN INCORPORATED INTO THIS DOCUMENT AS A RESULT. CONTRACTOR SHOULD SITE VERIFY EXISTING CONDITIONS PRIOR TO BEGINNING ANY WORK.



Jensen
Yorba
Lott

Inc.

522 West 10th Street
Juneau, Alaska 99801
phone 907-586-1070
fax 907-586-3959
jensenyorbalott.com



City and Borough of Juneau
Douglas Fire Hall and Library
Roof Renovation
CBJ Contract No. BE18-150
Juneau, Alaska

REVISIONS



SHEET TITLE

ROOF PLAN

DATE: February 28, 2018
FILE: 17036

A201

KEY NOTES:

THE KEY NOTES LISTED BELOW ARE PROJECT SPECIFIC AND MAY NOT BE SPECIFIC TO THIS SHEET.

- 1 INSTALL SHINGLES OVER SASU. SEE SPECIFICATIONS FOR BASIS OF DESIGN. SECURED AS REQUIRED FOR ENHANCED 140 MPH WINDOW WARRANTY. INSTALL WITH FASTENERS COMPATIBLE WITH PRESSURE TREATED SUBSTRATE
- 2 EXISTING SASU - OVERLAY EXISTING SASU WITH ADDITIONAL LAYER OF SASU TO SEAL TEARS & VOIDS IN THE EXISTING UNDERLAYMENT. SASU TO BE MALARKEY "401 ARCTIC SEAL" SELF ADHERING UNDERLAYMENT OR APPROVED EQUAL
- 3 EXISTING PRESSURE TREATED PLYWOOD TO REMAIN
- 4 EXISTING VENTILATED ROOF SYSTEM TO REMAIN
- 5 MALARKEY "EZ RIDGE SHINGLES" OR EQUAL @ RIDGE & HIP CONDITIONS
- 6 REINSTALL EX GUTTER - SEE 3/A802
- 7 PRE-FINISHED STEP FLASHING 5"x6 1/2"x19 1/2" LONG - VERIFY WITH EXISTING CONDITIONS
- 8 RE-INSTALL EXISTING METAL COPING FLASHING. REPLACE EXISTING FASTENERS WITH #14x2 1/2" HEX HEAD SS FASTENERS & EPDM WASHERS IN EXISTING HOLES
- 9 INSTALL NEW SASU OVER EXISTING 2"x8" CONTINUOUS BACKING ANGLE
- 10 EXISTING METAL SIDING & EDGE FLASHING TO REMAIN
- 11 RE-INSTALL ROOF TO WALL FLASHING WITH #12x2" HEX HEAD SS FASTENERS WITH EPDM WASHERS IN EXISTING HOLES
- 12 FALL PROTECTION ANCHORS - SEE 2/A802
- 13 INSTALL 2" MINERAL WOOL INSULATION IN EXISTING ATTIC SPACE AS REQUIRED TO COVER EXISTING EXPOSED PLASTIC INSULATION. SEE 1/301. RE-INSTALL EXISTING ACCESS HATCHES
- 14 EXISTING ROOF MOUNTED EQUIPMENT TO REMAIN
- 15 EXISTING ROOF LADDER TO REMAIN
- 16 DIVERTER FLASHING @ EAVE TO WALL CONNECTION
- 17 RETROFIT NEW WALK MAT TO EX PVC ROOF
- 18 24" WIDE VALLEY FLASHING. OVERLAY EDGES W/ 16" WIDE SASU - SEE 1/A801
- 19 EX DOWNSPOUT

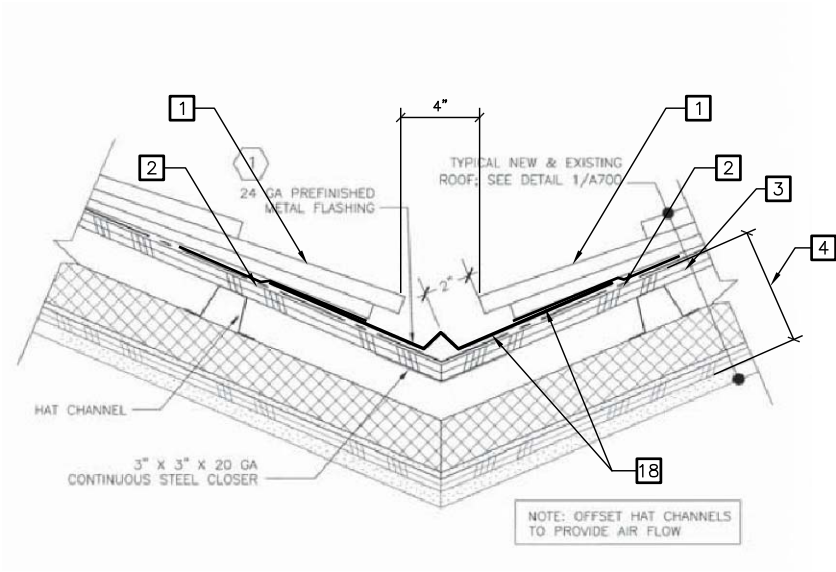
1 ROOF PLAN

SCALE: 0 4' 8' 16'

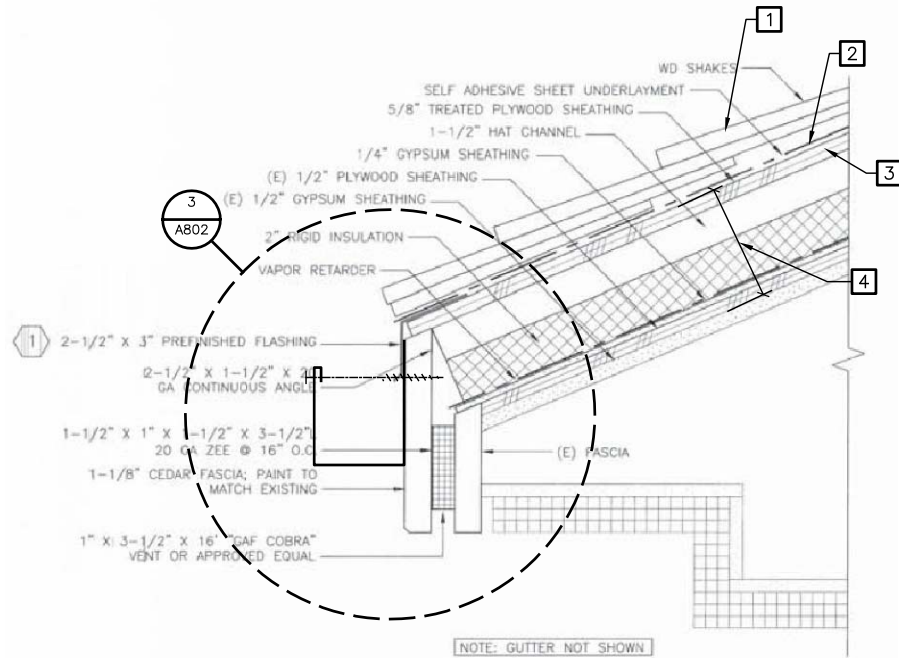


GENERAL NOTE

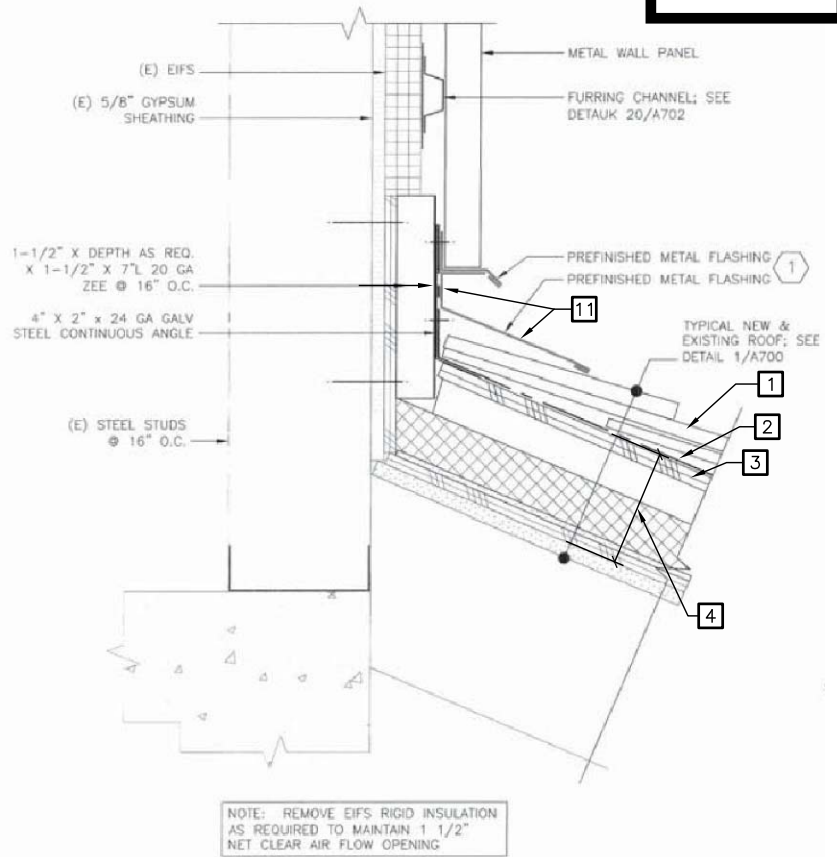
THESE IMAGES/DRAWINGS HAVE BEEN DIGITALLY REPRODUCED BASED ON INFORMATION AND MATERIALS SUBMITTED IN PART BY OTHERS. WHILE THIS INFORMATION IS BELIEVED TO BE RELIABLE, JENSEN YORBA LOTT, INC. IS NOT RESPONSIBLE FOR ITS ACCURACY NOR FOR THE ERRORS AND OMISSIONS WHICH MAY HAVE BEEN INCORPORATED INTO THIS DOCUMENT AS A RESULT. CONTRACTOR SHOULD SITE VERIFY EXISTING CONDITIONS PRIOR TO BEGINNING ANY WORK.



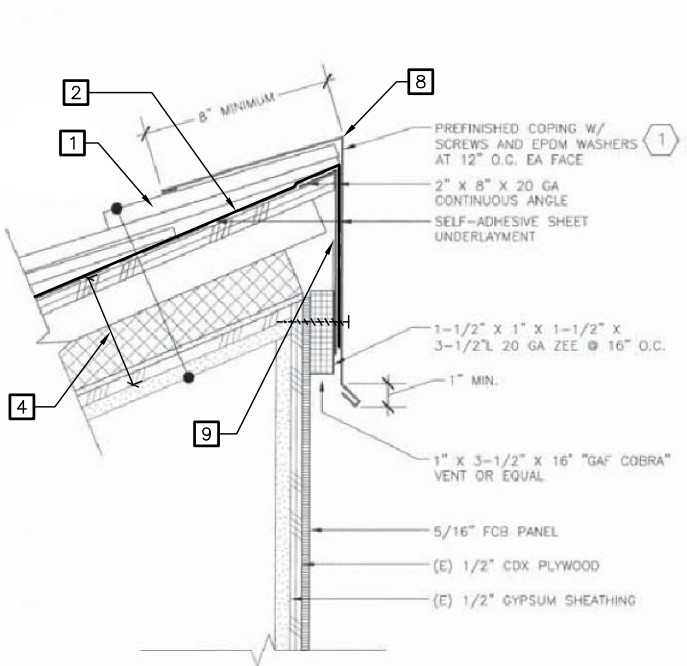
1 SHAKE ROOF VALLEY
17036
SCALE IS APPROXIMATE
SCALE: 0 3" 6" 1'



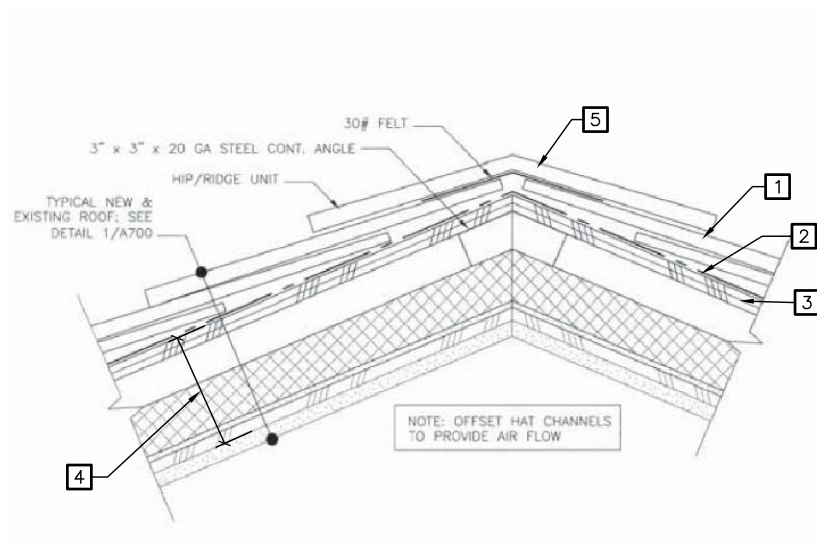
2 EAVE DETAIL
17036
SCALE IS APPROXIMATE
SCALE: 0 3" 6" 1'



3 FLASHING TO SHAKE ROOF
17036
SCALE IS APPROXIMATE
SCALE: 0 3" 6" 1'



4 ROOF AREA 2 PARAPET
17036
SCALE IS APPROXIMATE
SCALE: 0 3" 6" 1'



5 SHAKE ROOF RIDGE/HIP
17036
SCALE IS APPROXIMATE
SCALE: 0 3" 6" 1'

KEY NOTES:

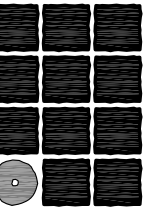
THE KEY NOTES LISTED BELOW ARE PROJECT SPECIFIC AND MAY NOT BE SPECIFIC TO THIS SHEET.

- 1 INSTALL SHINGLES OVER SASU. SEE SPECIFICATIONS FOR BASIS OF DESIGN. SECURED AS REQUIRED FOR ENHANCED 140 MPH WINDOW WARRANTY. INSTALL WITH FASTENERS COMPATIBLE WITH PRESSURE TREATED SUBSTRATE
- 2 EXISTING SASU — OVERLAY EXISTING SASU WITH ADDITIONAL LAYER OF SASU TO SEAL TEARS & VOIDS IN THE EXISTING UNDERLAYMENT. SASU TO BE MALARKEY "401 ARCTIC SEAL" SELF ADHERING UNDERLAYMENT OR APPROVED EQUAL
- 3 EXISTING PRESSURE TREATED PLYWOOD TO REMAIN
- 4 EXISTING VENTILATED ROOF SYSTEM TO REMAIN
- 5 MALARKEY "EZ RIDGE SHINGLES" OR EQUAL @ RIDGE & HIP CONDITIONS
- 6 REINSTALL EX GUTTER — SEE 3/A802
- 7 PRE-FINISHED STEP FLASHING 5"x6 1/2"x19 1/2" LONG — VERIFY WITH EXISTING CONDITIONS
- 8 RE-INSTALL EXISTING METAL COPING FLASHING. REPLACE EXISTING FASTENERS WITH #14x2 1/2" HEX HEAD SS FASTENERS & EPDM WASHERS IN EXISTING HOLES
- 9 INSTALL NEW SASU OVER EXISTING 2"x8" CONTINUOUS BACKING ANGLE
- 10 EXISTING METAL SIDING & EDGE FLASHING TO REMAIN
- 11 RE-INSTALL ROOF TO WALL FLASHING WITH #12x2" HEX HEAD SS FASTENERS WITH EPDM WASHERS IN EXISTING HOLES
- 12 FALL PROTECTION ANCHORS — SEE 2/A802
- 13 INSTALL 2" MINERAL WOOL INSULATION IN EXISTING ATTIC SPACE AS REQUIRED TO COVER EXISTING EXPOSED PLASTIC INSULATION. SEE 1/301. RE-INSTALL EXISTING ACCESS HATCHES
- 14 EXISTING ROOF MOUNTED EQUIPMENT TO REMAIN
- 15 EXISTING ROOF LADDER TO REMAIN
- 16 DIVERTER FLASHING @ EAVE TO WALL CONNECTION
- 17 RETROFIT NEW WALK MAT TO EX PVC ROOF
- 18 24" WIDE VALLEY FLASHING. OVERLAY EDGES W/ 16" WIDE SASU — SEE 1/A801
- 19 EX DOWNSPOUT

GENERAL NOTE

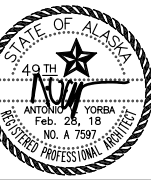
THESE IMAGES/DRAWINGS HAVE BEEN DIGITALLY REPRODUCED BASED ON INFORMATION AND MATERIALS SUBMITTED IN PART BY OTHERS. WHILE THIS INFORMATION IS BELIEVED TO BE RELIABLE, JENSEN YORBA LOTT, INC. IS NOT RESPONSIBLE FOR ITS ACCURACY NOR FOR THE ERRORS AND OMISSIONS WHICH MAY HAVE BEEN INCORPORATED INTO THIS DOCUMENT AS A RESULT. CONTRACTOR SHOULD SITE VERIFY EXISTING CONDITIONS PRIOR TO BEGINNING ANY WORK.

BASE BID



**Jensen
Yorba
Lott
Inc.**

522 West 10th Street
Juneau, Alaska 99801
phone 907-586-1070
fax 907-586-3959
jensenyorbalott.com



City and Borough of Juneau
Douglas Fire Hall and Library
Roof Renovation
CBJ Contract No. BE18-150
Juneau, Alaska

REVISIONS



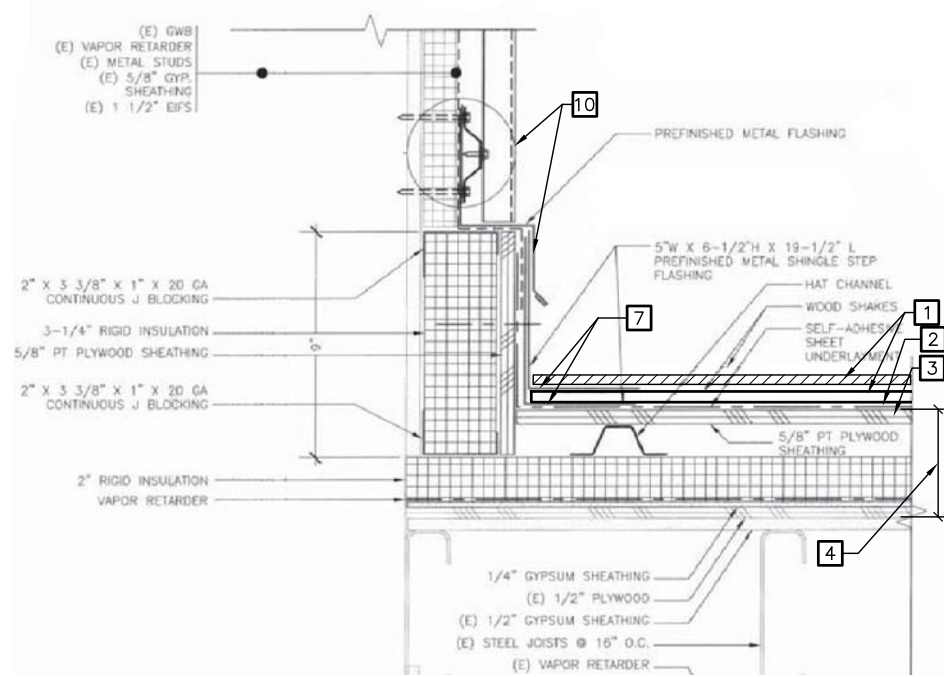
SHEET TITLE

**EXTERIOR
DETAILS**

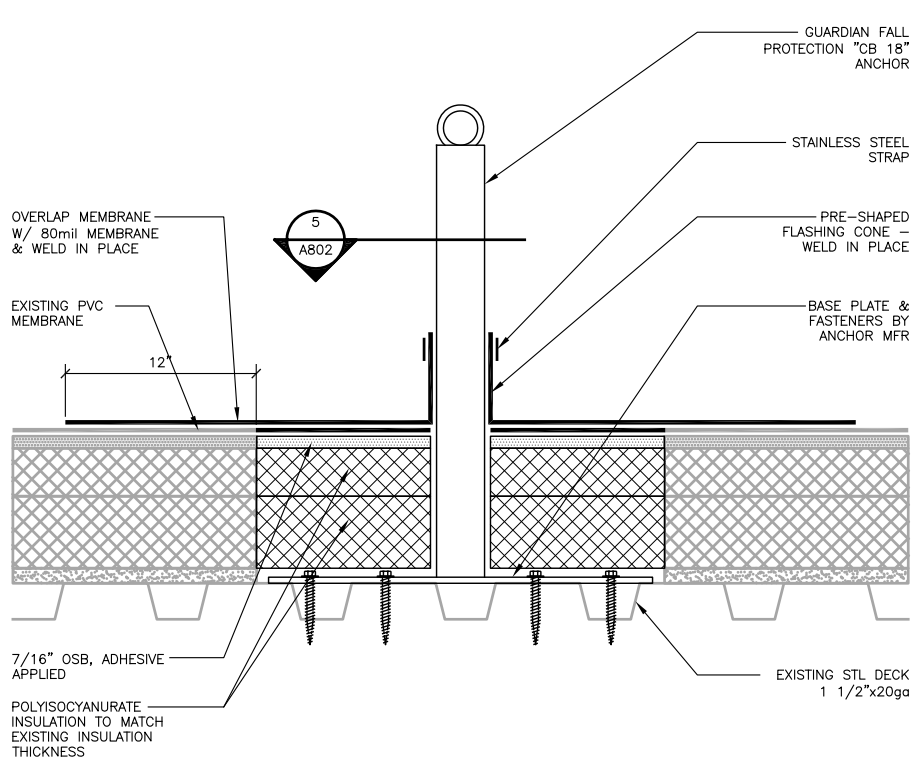
DATE: February 28, 2018

FILE: 17036

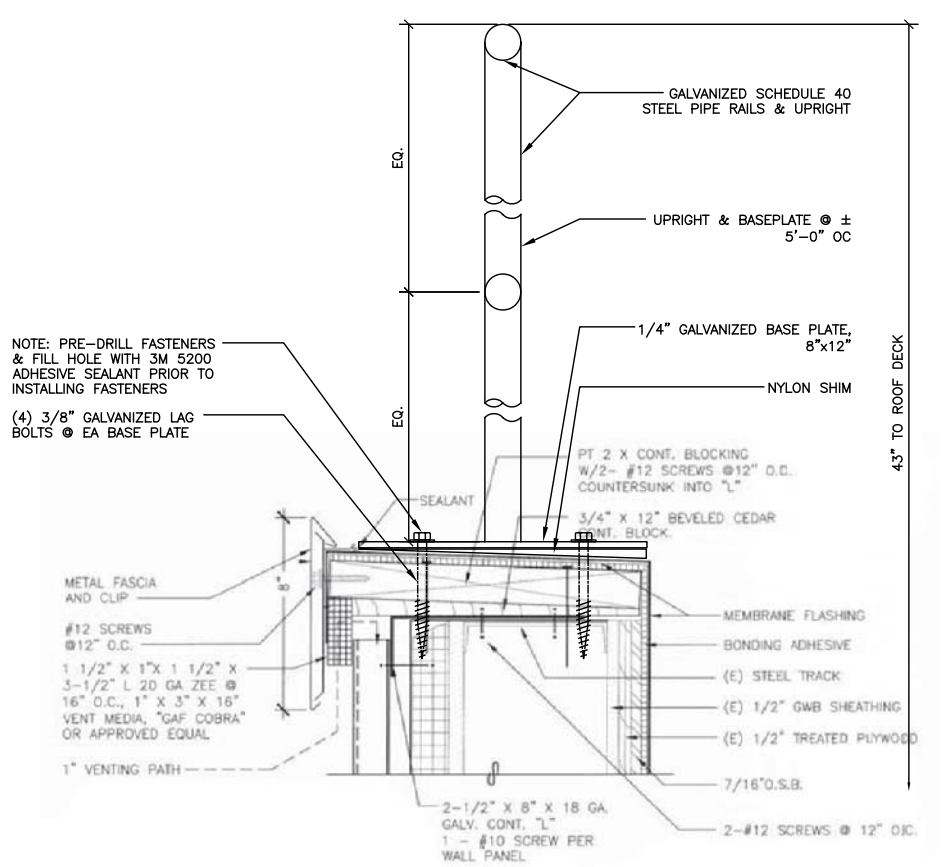
A801



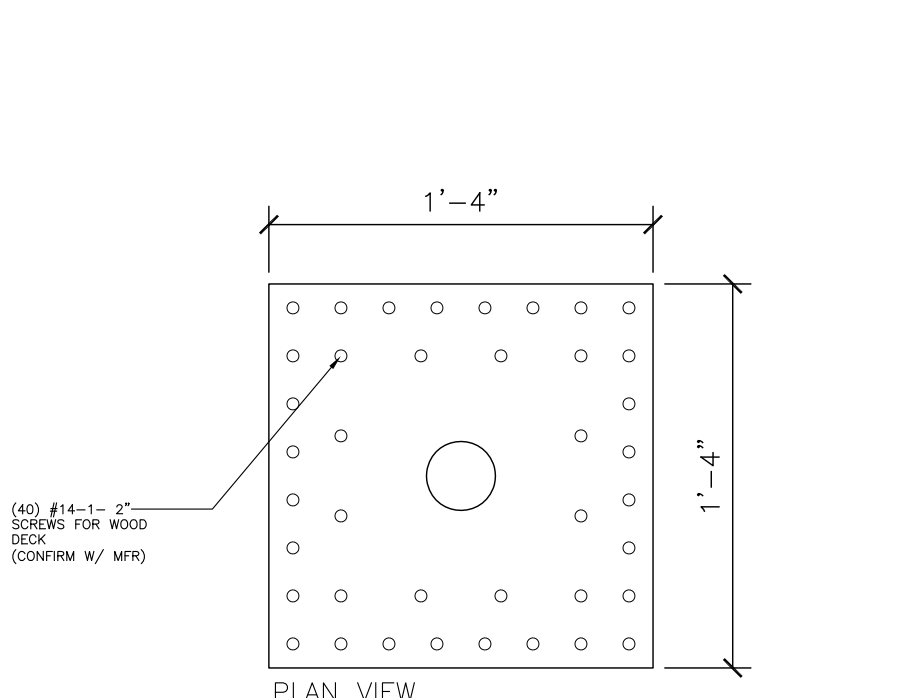
1 ROOF TO WALL
17036
SCALE IS APPROXIMATE
SCALE: 0 3" 6" 1'



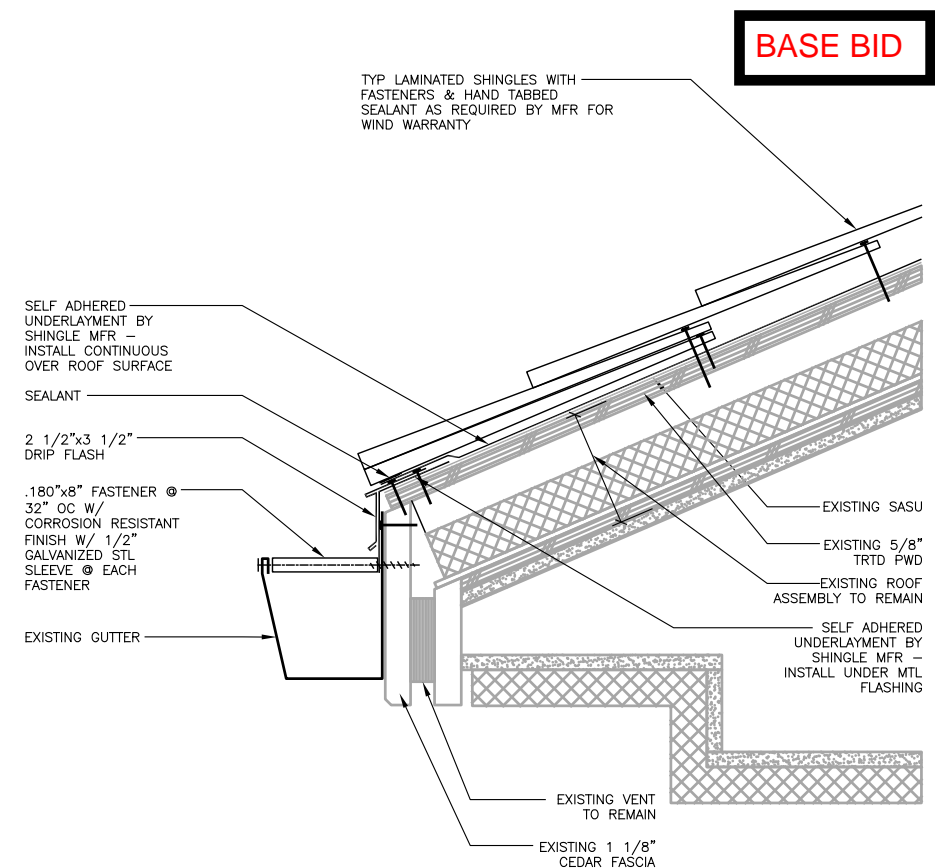
2 FALL PROTECTION
17036/ A802-2
SCALE: 0 3" 6" 1'



4 RAILS
17036
SCALE IS APPROXIMATE
SCALE: 0 3" 6" 1'



5 FALL PROTECTION (PLAN VIEW)
17036/ A802-5
SCALE: 0 3" 6" 1'

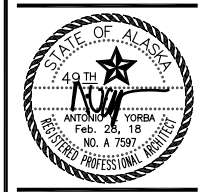


3 GUTTER
17036/A801-3
SCALE: 0 3" 6" 1'

- KEY NOTES:**
THE KEY NOTES LISTED BELOW ARE PROJECT SPECIFIC AND MAY NOT BE SPECIFIC TO THIS SHEET.
- 1 INSTALL SHINGLES OVER SASU. SEE SPECIFICATIONS FOR BASIS OF DESIGN. SECURED AS REQUIRED FOR ENHANCED 140 MPH WINDOW WARRANTY. INSTALL WITH FASTENERS COMPATIBLE WITH PRESSURE TREATED SUBSTRATE
 - 2 EXISTING SASU - OVERLAY EXISTING SASU WITH ADDITIONAL LAYER OF SASU TO SEAL TEARS & VOIDS IN THE EXISTING UNERLAYMENT. SASU TO BE MALARKEY "401 ARCTIC SEAL" SELF ADHERING UNDERLAYMENT OR APPROVED EQUAL
 - 3 EXISTING PRESSURE TREATED PLYWOOD TO REMAIN
 - 4 EXISTING VENTILATED ROOF SYSTEM TO REMAIN
 - 5 MALARKEY "EZ RIDGE SHINGLES" OR EQUAL @ RIDGE & HIP CONDITIONS
 - 6 REINSTALL EX GUTTER - SEE 3/A802
 - 7 PRE-FINISHED STEP FLASHING 5"x6 1/2"x19 1/2" LONG - VERIFY WITH EXISTING CONDITIONS
 - 8 RE-INSTALL EXISTING METAL COPING FLASHING. REPLACE EXISTING FASTENERS WITH #14x2 1/2" HEX HEAD SS FASTENERS & EPDM WASHERS IN EXISTING HOLES
 - 9 INSTALL NEW SASU OVER EXISTING 2"x8" CONTINUOUS BACKING ANGLE
 - 10 EXISTING METAL SIDING & EDGE FLASHING TO REMAIN
 - 11 RE-INSTALL ROOF TO WALL FLASHING WITH #12x2" HEX HEAD SS FASTENERS WITH EPDM WASHERS IN EXISTING HOLES
 - 12 FALL PROTECTION ANCHORS - SEE 2/A802
 - 13 INSTALL 2" MINERAL WOOL INSULATION IN EXISTING ATTIC SPACE AS REQUIRED TO COVER EXISTING EXPOSED PLASTIC INSULATION. SEE 1/301. RE-INSTALL EXISTING ACCESS HATCHES
 - 14 EXISTING ROOF MOUNTED EQUIPMENT TO REMAIN
 - 15 EXISTING ROOF LADDER TO REMAIN
 - 16 DIVERTER FLASHING @ EAVE TO WALL CONNECTION
 - 17 RETROFIT NEW WALK MAT TO EX PVC ROOF
 - 18 24" WIDE VALLEY FLASHING. OVERLAY EDGES W/ 16" WIDE SASU - SEE 1/A801
 - 19 EX DOWNSPOUT

GENERAL NOTE
THESE IMAGES/DRAWINGS HAVE BEEN DIGITALLY REPRODUCED BASED ON INFORMATION AND MATERIALS SUBMITTED IN PART BY OTHERS. WHILE THIS INFORMATION IS BELIEVED TO BE RELIABLE, JENSEN YORBA LOTT, INC. IS NOT RESPONSIBLE FOR ITS ACCURACY NOR FOR THE ERRORS AND OMISSIONS WHICH MAY HAVE BEEN INCORPORATED INTO THIS DOCUMENT AS A RESULT. CONTRACTOR SHOULD SITE VERIFY EXISTING CONDITIONS PRIOR TO BEGINNING ANY WORK.

Jensen Yorba Lott Inc.
522 West 10th Street
Juneau, Alaska 99801
phone 907-586-1070
fax 907-586-3959
jensenyorbalott.com



City and Borough of Juneau
Douglas Fire Hall and Library
Roof Renovation
CBJ Contract No. BE18-150
Juneau, Alaska

REVISIONS
△
△
△
SHEET TITLE
EXTERIOR DETAILS
DATE: February 28, 2018
FILE: 17036
A802