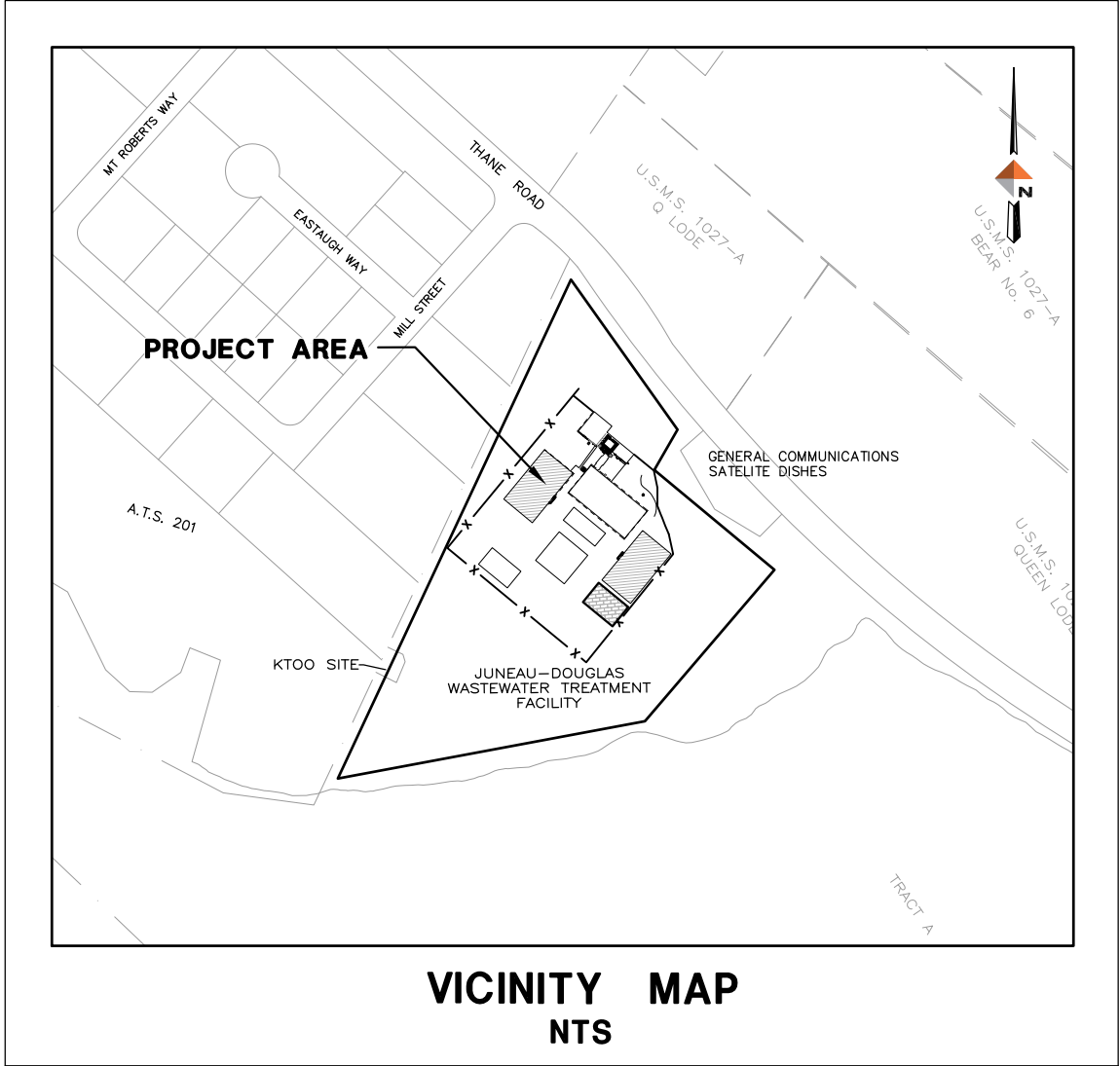


INDEX

DESCRIPTION	SHEET NO.
COVER SHEET	1 OF 8
LEGEND, ABBREVIATIONS, GENERAL NOTES & PROJECT AREA	2 OF 8
AS-BUILT BASINS	3 OF 8
AS-BUILT BASINS	4 OF 8
EXISTING SITE AT BASIN 2	5 OF 8
AERATION BASIN 2 PLAN AND GENERAL DETAILS	6 OF 8
SOUTH SUMP & FIXED SUCTION LINE DETAILS	7 OF 8
AUXILIARY PUMP SUMP DETAILS	8 OF 8

*JDWWTP AERATION BASIN
FLOOR OVERLAYS
CONTRACT NO. BE18-229*



Consulting Engineers • Land Surveyors • Construction Administration

PLANS DEVELOPED BY:
DOWL
5368 COMMERCIAL BOULEVARD
JUNEAU, ALASKA 99801
907-780-3533
AECL848

SHEET NO.

1
of
8

GENERAL NOTES:

1. THE LOCATION OF EXISTING EQUIPMENT SHOWN IS APPROXIMATE AND THE CONTRACTOR SHALL FIELD VERIFY PRIOR TO CONSTRUCTION. THE CONTRACTOR IS REQUIRED TO TAKE ALL PRECAUTIONARY MEANS TO PROTECT EXISTING EQUIPMENT AND THE BUILDING STRUCTURE.
2. WHERE CONDITIONS ARE ENCOUNTERED WHICH APPEAR DIFFERENT FROM THOSE INDICATED ON THE PLANS OR IN THE SPECIFICATIONS, THE CONTRACTOR SHALL NOTIFY THE ENGINEER PRIOR TO THE PERFORMANCE OF WORK.
3. ALL WORK AND MATERIALS NOT INCLUDED IN THE PROJECT SPECIFICATIONS SHALL CONFORM TO THE CITY AND BOROUGH OF JUNEAU STANDARD SPECIFICATIONS FOR CIVIL ENGINEERING PROJECTS AND SUBDIVISION IMPROVEMENTS DECEMBER 2003 EDITION INCLUDING ERRATA AND MODIFICATIONS THERETO. IN CASE OF A CONFLICT BETWEEN REGULATORY OR STANDARD SPECIFICATIONS, THE MORE STRINGENT REQUIREMENT WILL PREVAIL.
4. CONSTRUCTION SAFETY AND SANITATION FACILITIES FOR WORKERS SHALL BE PROVIDED BY THE CONTRACTOR AND MAINTAINED PER THE REQUIREMENTS OF AUTHORITIES HAVING JURISDICTION.
5. THE CONTRACTOR SHALL BE RESPONSIBLE FOR COORDINATING ANY AND ALL WORK IN THE AREA WITH THE PROJECT ENGINEER AND CBJ STAFF PRIOR TO BEGINNING ANY WORK ON THIS PROJECT.
6. THE CONTRACTOR SHALL COORDINATE WITH CBJ STAFF FOR LOCKOUT AND TAG OUT AND OPERATION OF EXISTING VALVES AND PUMPS AND ON OPERATIONAL ASPECTS OF PLANT IN OPERATION.
7. THE CONTRACTOR IS TO COMPLY WITH ALL PERMIT CONDITIONS AND RESTRICTIONS.
8. CONTRACTOR SHALL BE RESPONSIBLE FOR DUST CONTROL, USING WATER OR OTHER METHODS APPROVED BY THE REPRESENTATIVE.
9. CONTRACTOR SHALL BE RESPONSIBLE FOR MAINTAINING A SAFE SITE DURING BOTH WORKING & NON-WORKING HOURS.
10. REFER TO THE PROJECT SPECIFICATION (SECTION 01100) FOR EXISTING FACILITY SHUT DOWN ALLOWANCES AND CONSTRUCTION CONSTRAINTS.
11. CONTRACTOR SHALL ABIDE BY CBJ WWTP HOURS AND SECURITY ARRANGEMENTS AND SHALL GIVE 72 HOURS NOTICE IF WORK WILL OCCUR OUTSIDE NORMAL HOURS OF OPERATION OR WEEKENDS.

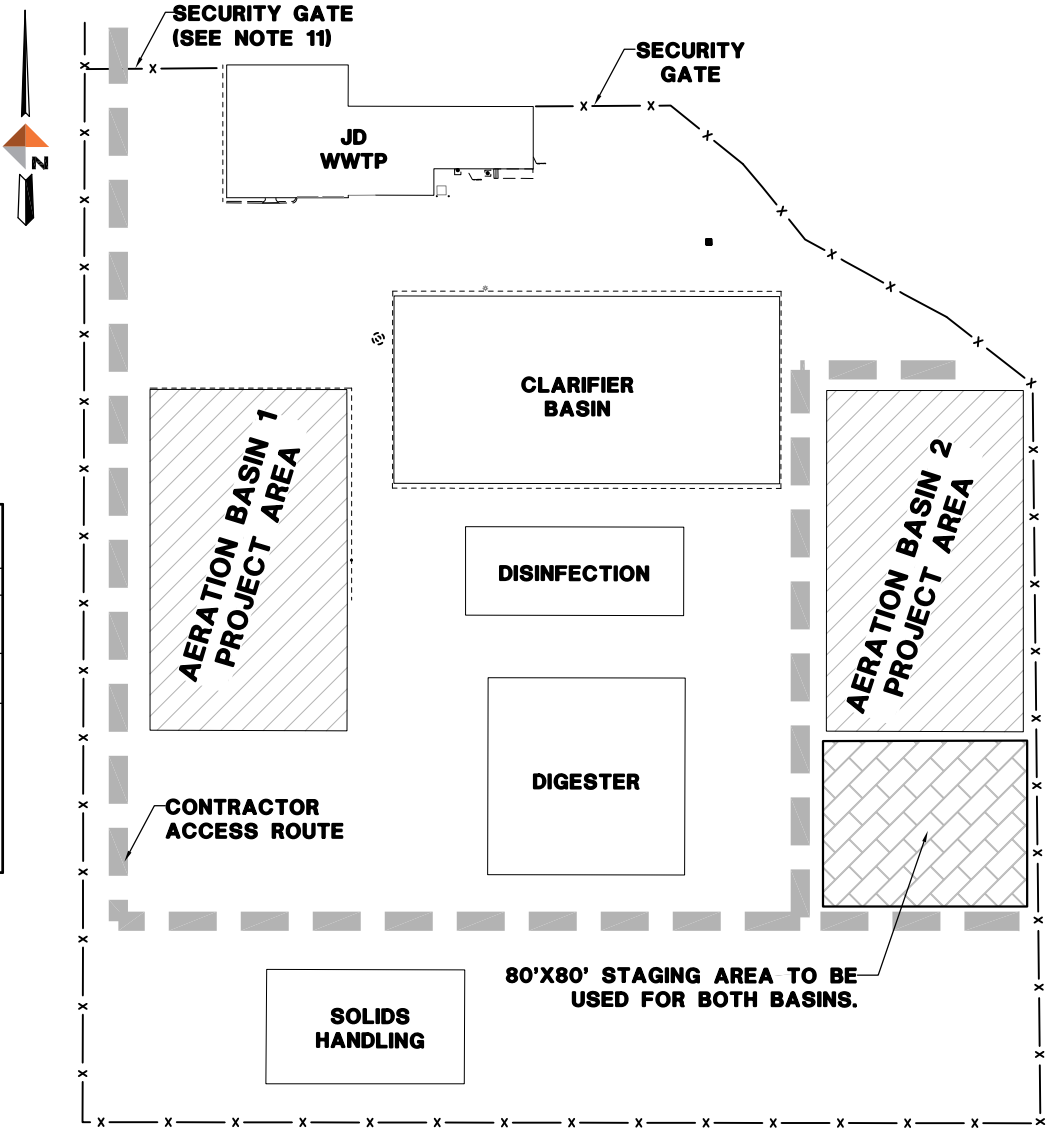
PROJECT DEADLINES AND SEQUENCING		
PERIOD	COMPLETION DATE	REQUIREMENTS
SUBSTANTIAL COMPLETION	NOV 30, 2018	THE SOUTH SUMP, AUXILLARY SUMP, AND BASIN FLOOR OVERLAY FOR BOTH BASINS SHALL BE READY FOR THEIR INTENDED USE (INCLUSIVE OF A 7-DAY CURING PERIOD FOR ALL CONCRETE).
FINAL	DEC 15, 2018	ALL WORK SHALL BE COMPLETE.

ADDITIONAL SEQUENCING NOTES AND REQUIREMENTS:

A WORK ON AERATION BASIN TWO SHALL BE COMPLETED BEFORE WORK ON AERATION BASIN ONE.

B THE EVACUATION OF WASTEWATER AND CLEANING OF AERATION BASINS ONE AND TWO WILL BE PERFORMED BY CBJ WASTEWATER PERSONNEL. BASIN TWO IS CURRENTLY EMPTY AND WILL REMAIN EMPTY UNTIL MAY 10, 2018. THE BASIN WILL BE FLOODED FOR THE SUMMER AND RE-EVACUATED BY OCTOBER 1, 2018.

C CBJ WASTEWATER PERSONNEL SHALL BE ALLOTTED 10 DAYS AFTER A 7-DAY CURING PERIOD FOR THE BASIN TWO OVERLAY TO FLOOD BASIN TWO AND CLEAN BASIN ONE BEFORE WORK MAY COMMENCE ON BASIN ONE.



GENERAL PROJECT LEGEND

EXISTING ITEMS		NEW ITEMS	
EXISTING CONTOUR (0.01' INTERVAL)	EXISTING LIGHT POLE	PROPOSED EQUIPMENT & PIPING	
EXISTING EDGE OF ASPHALT	EXISTING ELECTRIC METER	PROPOSED DISCHARGE PIPE	
EXISTING EDGE OF GRAVEL	EXISTING JUNCTION BOX	SAWCUT LINE	
EXISTING FENCE-BARBWIRE	EXISTING STORM CULVERT	GB GRADE BREAK	
EXISTING PROPERTY LINE	EXISTING SANITARY SEWER MAIN	SD STORM DRAIN	
EXISTING EASEMENT	EXISTING SANITARY SEWER MANHOLE		
EXISTING RAILROAD R.O.W.	EXISTING WATER MAIN		
SD EXISTING STORM DRAIN	EXISTING GATE VALVE		
EXISTING SIGN	EXISTING FIRE HYDRANT		
G EXISTING GAS LINE	EXISTING PIPE		
FO EXISTING FIBER OPTICS LINE	EXISTING EQUIPMENT TO BE REMOVED		
C EXISTING TELE/COMMUNICATION LINE	EXISTING EQUIPMENT TO BE RELOCATED		
EXISTING PEDESTAL	DEMOLITION LIMITS		
OE EXISTING OVERHEAD POWER			
E EXISTING BURIED POWER			
EXISTING UTILITY POLE			
EXISTING UTILITY ANCHOR			
EXISTING ROOF OVERHANG			

PROJECT AREA MAP

CBJ STAFF CONTACT INFORMATION:
NAME: RANDY BROWN
PHONE: (907) 321-3827

ENGINEER CONTACT INFORMATION:
NAME: JOHN SCOTT
PHONE: (907) 780-3533

ABBREVIATIONS

B.O.C.	BOTTOM OF CONCRETE	MH	MANHOLE
C.B.J.	CITY AND BOROUGH OF JUNEAU	MIN	MINIMUM
CL	CENTERLINE	MS	MECHANICAL SCREEN
CONC.	CONCRETE	MTE	MATCH TO EXISTING
CPP	CORRUGATED POLYETHYLENE PIPE	OC	OFF CENTER
CTR	CONTRACTOR	OL	OVERLOAD
D.I.	DUCTILE IRON PIPE	OP	OVERFLOW PIPE
DIA	DIAMETER	PFD	PROCESS FLOW DIAGRAM
DP	PUMP DISCHARGE PIPE	PLC	PROGRAMMABLE LOGIC
EA	EACH		CONTROLLER
EL	ELEVATION	PV	PLUG VALVE
F.C.A.	FLANGE COUPLING ADAPTER	PVC	POLYVINYL CHLORIDE PIPE
FIG	FIGURE	RGS	RIGID GALVANIZED STEEL
FL	FLANGE	S=	SLOPE
FT	FEET	SEQ.	SEQUENCING
GRV	GROOVED	SBR	SEQUENCING BATCH REACTOR
GND	GROUND	TBC	TOP BACK OF CURB
IC	INFLUENT CHANNEL	T.O.C.	TOP OF CONCRETE
I.E.	INVERT ELEVATION	T.O.S.	TOP OF SLAB
IP	SBR INFLUENT PIPE	TP	TOP OF PAVEMENT
INV.	INVERT	TSP	TWISTED SHIELD PAIR
LF	LINEAL FEET	(TYP)	TYPICAL
LT	LEVEL TRANSDUCER	VIC	VICTAULIC
MCC	MOTOR CONTROL CENTER	WC	WASHER COMPACTOR
MECH	MECHANICAL	WWM	WELDED WIRE MESH
		WWTP	WASTEWATER TREATMENT PLANT



DOWL

PLANS DEVELOPED BY:
DOWL
5368 COMMERCIAL BOULEVARD
JUNEAU, ALASKA 99801
907-780-3533
AECL848

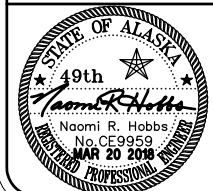
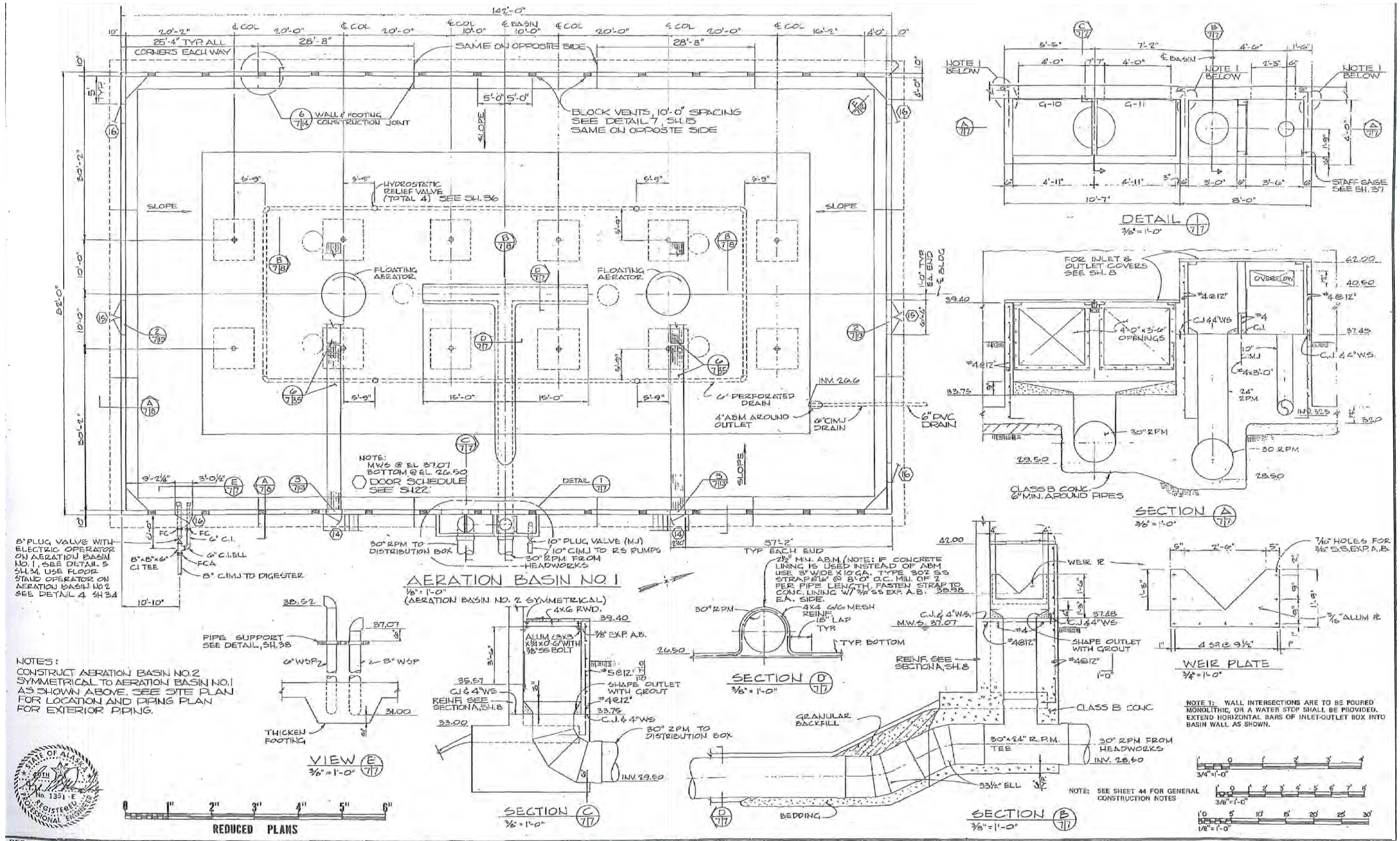
Consulting Engineers • Land Surveyors • Construction Administration

JOB No. J70926.02 DRAWN BY: STAFF DESIGNED BY: STAFF CHECKED BY: STAFF DATE: MAR. 2018



JDWWTP AERATION BASIN
FLOOR OVERLAYS
CONTRACT NO. BE18-229

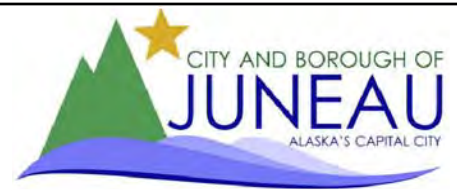
LEGEND, ABBREVIATIONS,
GENERAL NOTES AND PROJECT AREA



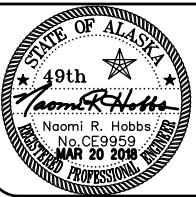
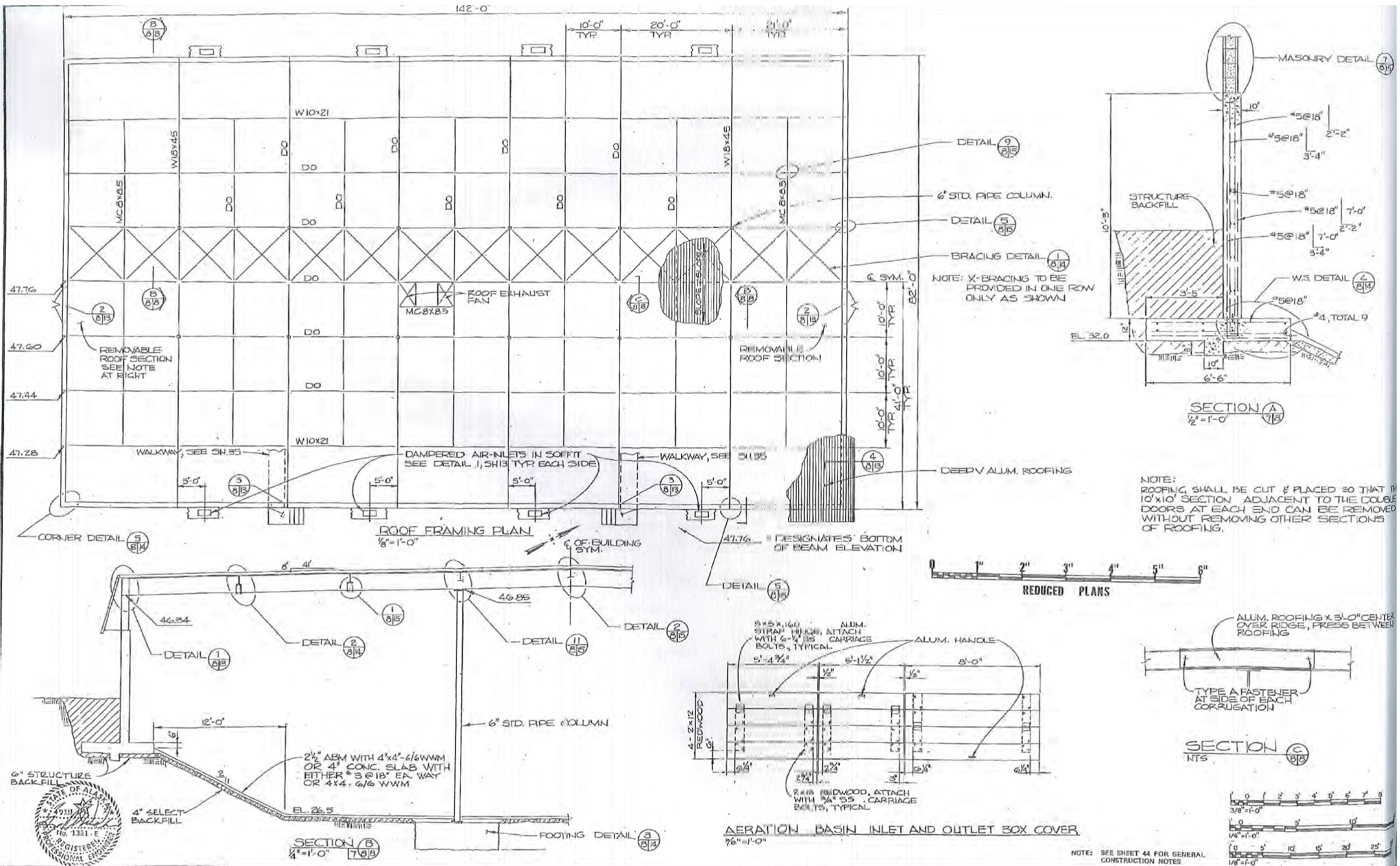
DOWL
Consulting Engineers • Land Surveyors • Construction Administration

PLANS DEVELOPED BY:
DOWL
5368 COMMERCIAL BOULEVARD
JUNEAU, ALASKA 99801
907-780-3533
AECL848

JOB NO. J70926.02 DRAWN BY: STAFF DESIGNED BY: STAFF CHECKED BY: STAFF DATE: MAR. 2018



**JDWWTP AERATION BASIN
FLOOR OVERLAYS
CONTRACT NO. BE18-229**



PLANS DEVELOPED BY:
DOWL
5368 COMMERCIAL BOULEVARD
JUNEAU, ALASKA 99801
907-780-3533
AECL848

Consulting Engineers • Land Surveyors • Construction Administration

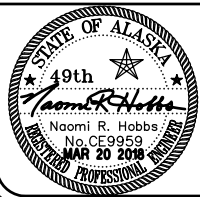
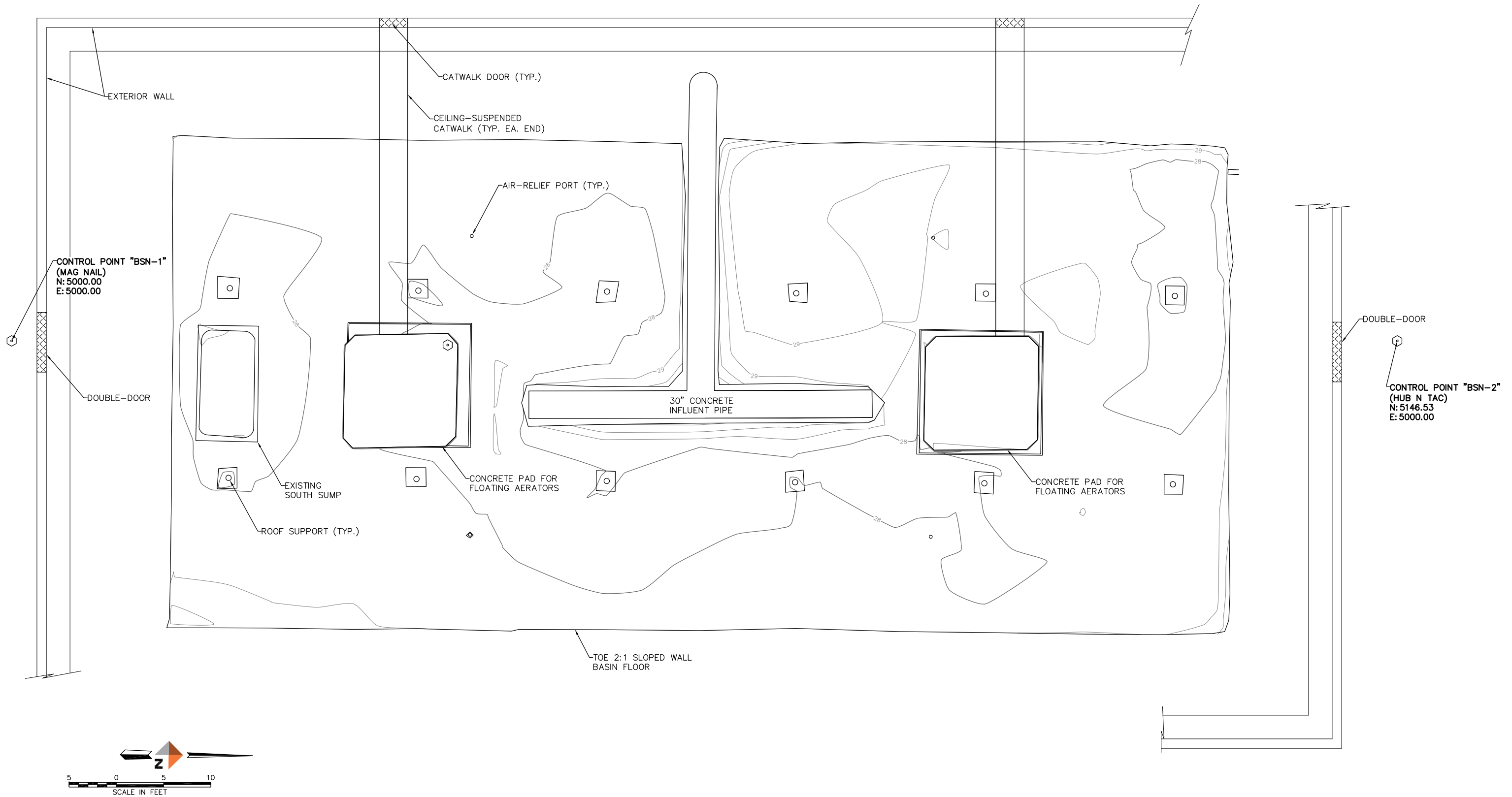
JOB No. J70926.02 DRAWN BY: STAFF DESIGNED BY: STAFF CHECKED BY: STAFF DATE: MAR. 2018



**JDWWTP AERATION BASIN
FLOOR OVERLAYS
CONTRACT NO. BE18-229**

AS-BUILT BASINS

\\JUNU-FS\\JUNU-projects\\30\\70926-02\\65CAD\\SC-CS-BA-70926.02.dwg 2018-3-19 17:35:54



Consulting Engineers • Land Surveyors • Construction Administration

JOB No. J70926.02 DRAWN BY: STAFF DESIGNED BY: STAFF CHECKED BY: STAFF DATE: MAR. 2018

PLANS DEVELOPED BY:
DOWL
5368 COMMERCIAL BOULEVARD
JUNEAU, ALASKA 99801
907-780-3533
AECL848



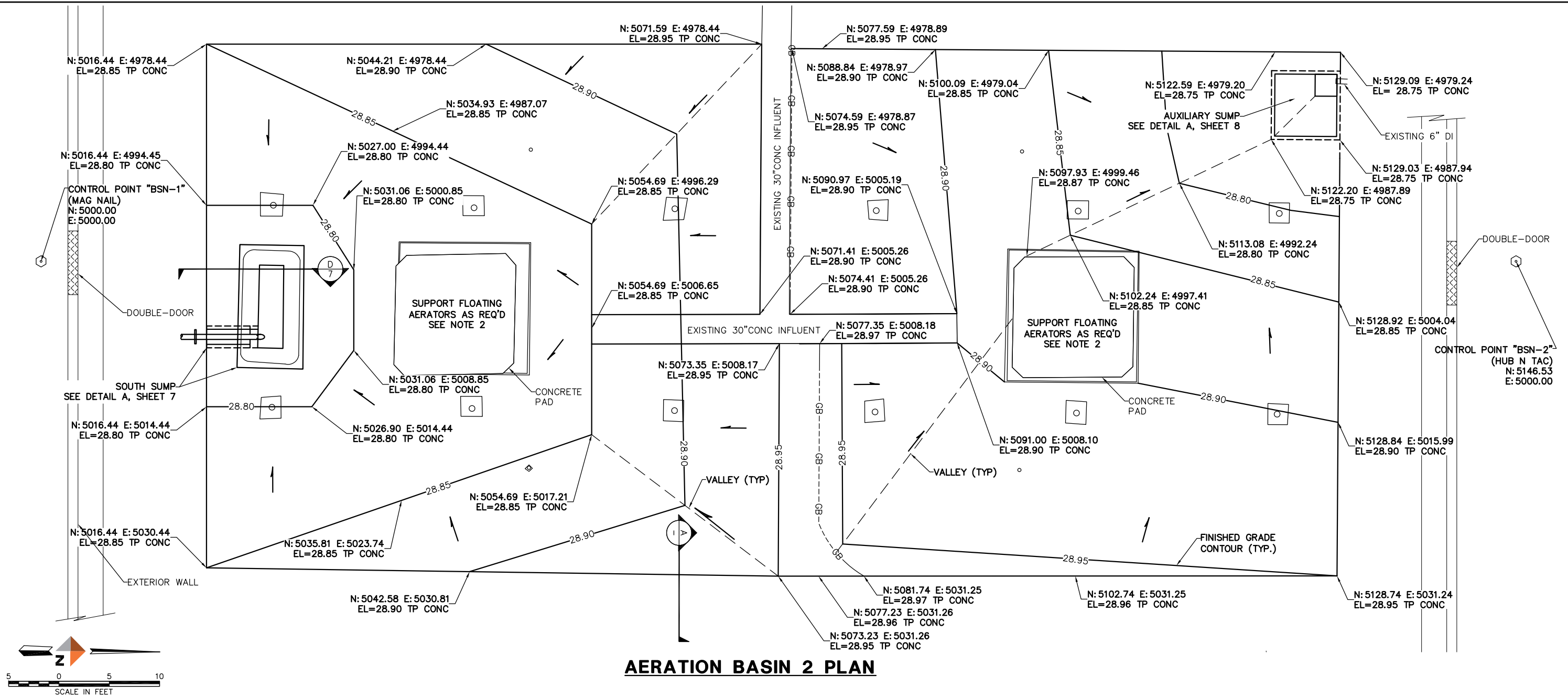
**JDWWTP AERATION BASIN
FLOOR OVERLAYS
CONTRACT NO. BE18-229**

**EXISTING SITE
AT BASIN 2**

SHEET NO.

**5
of
8**

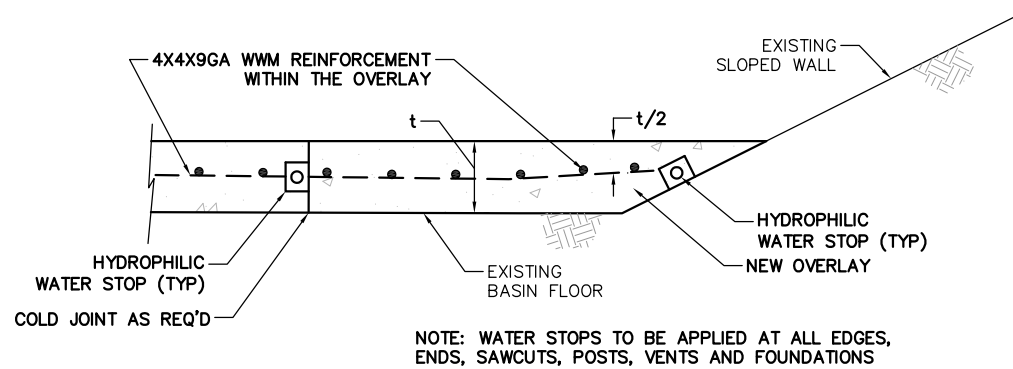
\\JUNU-FS\\unru-projects\\30\\70926-02\\65CAD\\SC-CS-BA-70926.02.dwg 2018-3-19 17:35:55



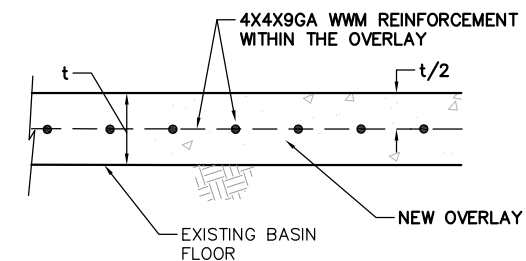
AERATION BASIN 2 PLAN

NOTES:

1. ALL JOINTS BETWEEN NEW AND OLD CONCRETE OR SEPARATE POURS OF NEW CONCRETE SHALL HAVE HYDROPHILIC WATER STOP. SEE DETAIL A, THIS SHEET.
2. CONTRACTOR WILL BE REQUIRED TO ELEVATE AND SUPPORT AERATION FLOATS AT EACH END OF BASIN DURING THE CONCRETE OVERLAY. THERE ARE TWO UNITS PER BASIN AS SHOWN AND EACH UNIT IS ESTIMATED AT 20,000 POUNDS, AND CONSISTS OF THREE RUBBER FLOATS ON THREE STEEL ARMS WITH AN AERATION PADDLE AND MOTOR IN THE CENTER. AN APPROXIMATE 3-FT WIDE CEILING-SUSPENDED CATWALK EXTENDS TO EACH AERATION ASSEMBLY FROM AN EXTERIOR DOOR AS SHOWN ON SHEET 5. THE BOTTOM OF CATWALK IS APPROXIMATELY 4-FT ABOVE THE BASIN FLOOR AND CAN SUPPORT NO MORE THAN 400-LBS.
3. CONCRETE FOR THE OVERLAY OF ONE BASIN IS ESTIMATED AT 70 CUBIC YARDS. ADDITIONAL CONCRETE WILL BE REQUIRED FOR THE TWO SUMPS PER BASIN.
4. AERATION BASIN ONE IS A MIRROR IMAGE OF AERATION BASIN TWO. VERIFY FINISHED GRADE CONTOURS FOR BASIN ONE WITH THE ENGINEER PRIOR TO POURING THE OVERLAY FOR BASIN ONE.
5. BOTH AERATION BASIN ROOFS LEAK. REMOVE STANDING WATER PRIOR TO POURING CONCRETE AND PROTECT CONCRETE DURING THE CURING PROCESS AS REQUIRED.

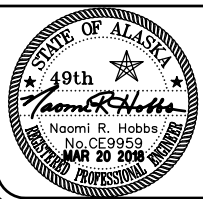


A WATER STOP
NTS



NOTE: OVERLAY THICKNESS VARIES BETWEEN 3" AND 5".
SEE FINISHED GRADE CONTOURS THIS SHEET FOR LAYOUT.

B OVERLAY TYPICAL SECTION
NTS



Consulting Engineers • Land Surveyors • Construction Administration

PLANS DEVELOPED BY:
DOWL
5368 COMMERCIAL BOULEVARD
JUNEAU, ALASKA 99801
907-780-3533
AECL848

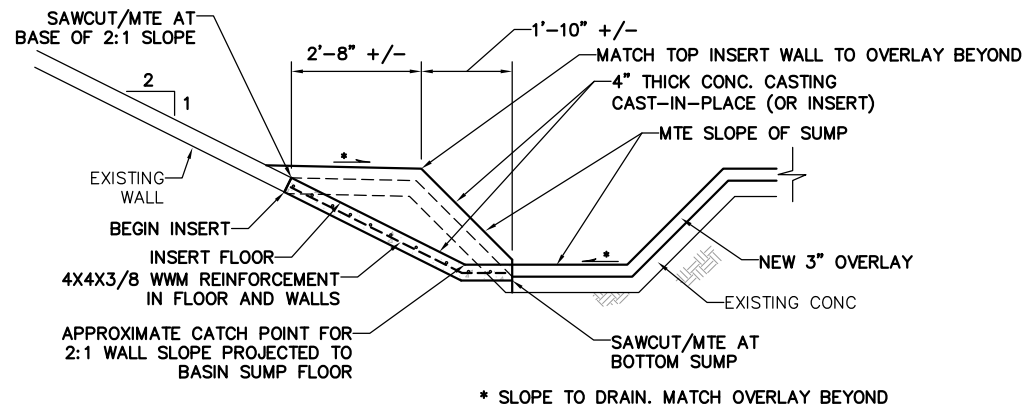


**JDWWTP AERATION BASIN
FLOOR OVERLAYS
CONTRACT NO. BE18-229**

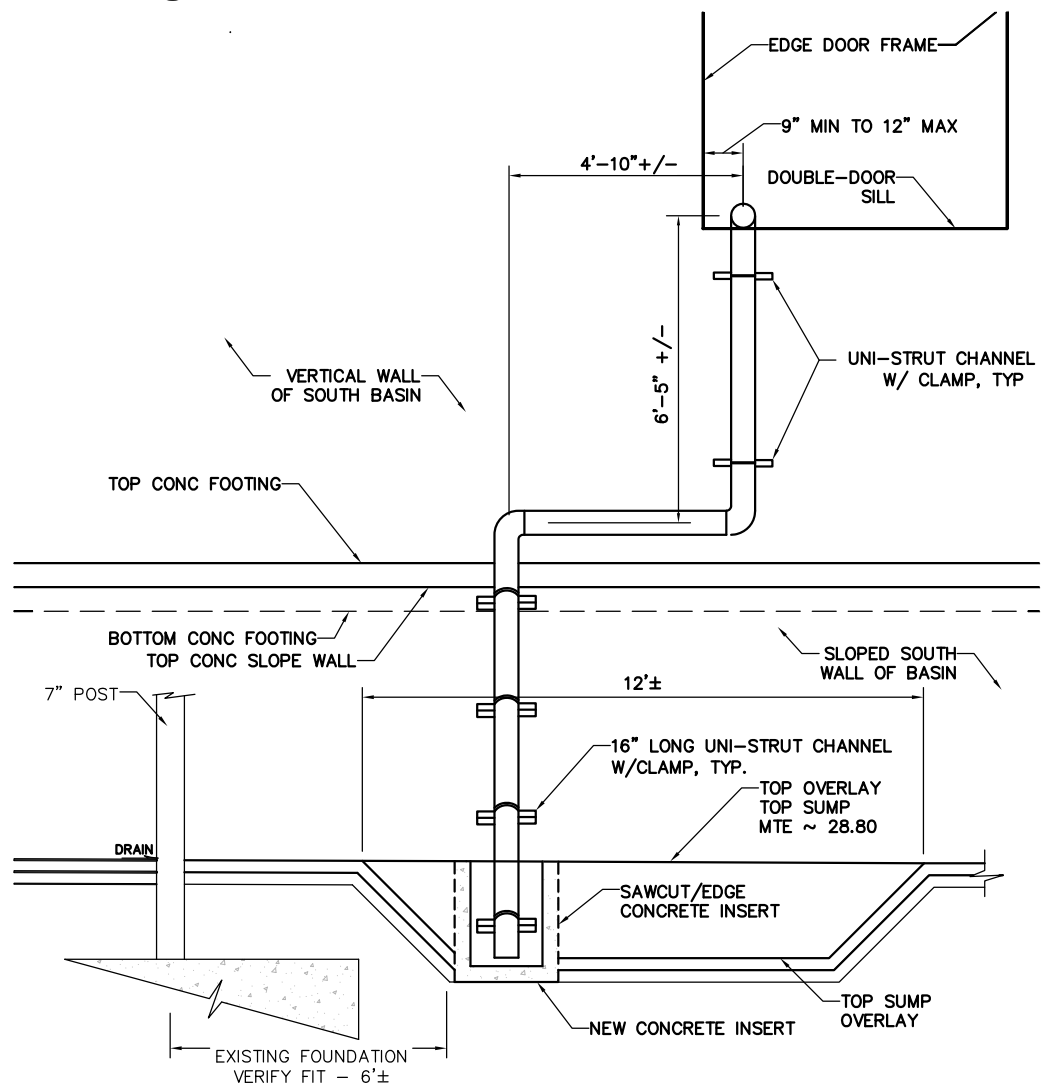
**AERATION BASIN 2 PLAN
AND GENERAL DETAILS**

SHEET NO.

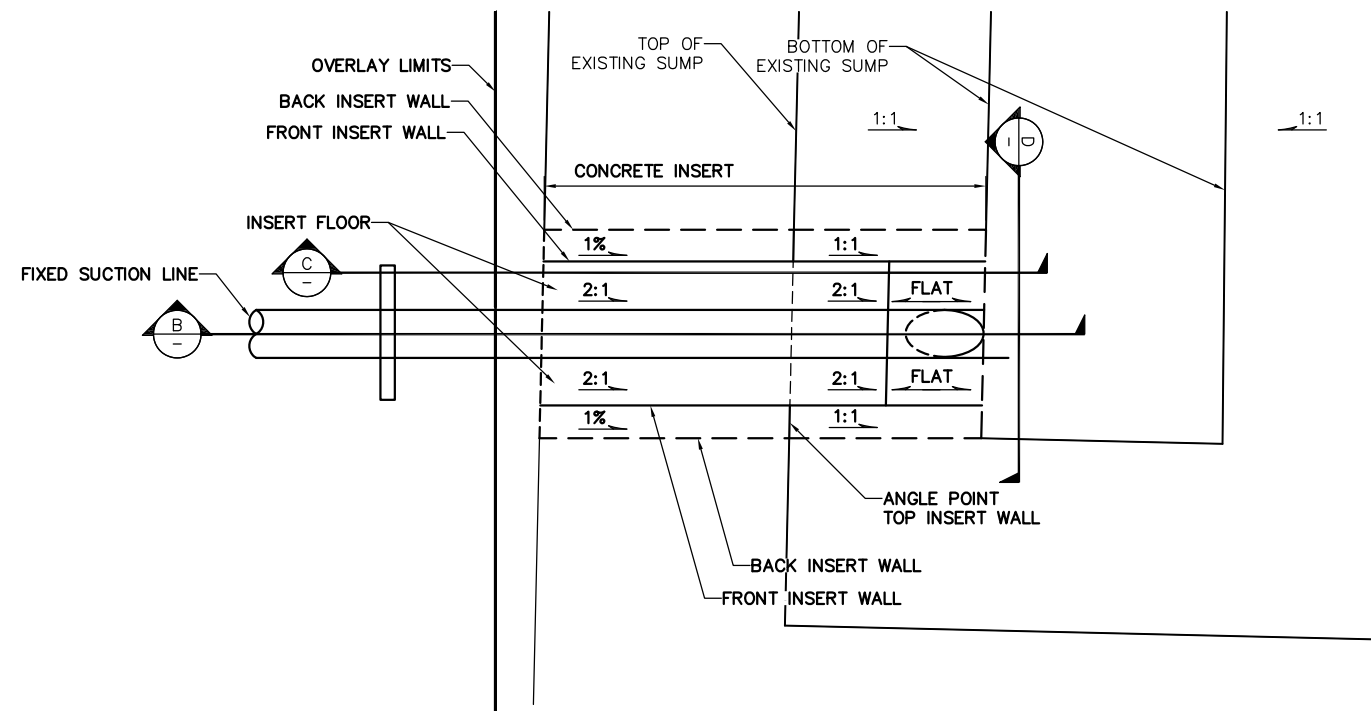
**6
of
8**



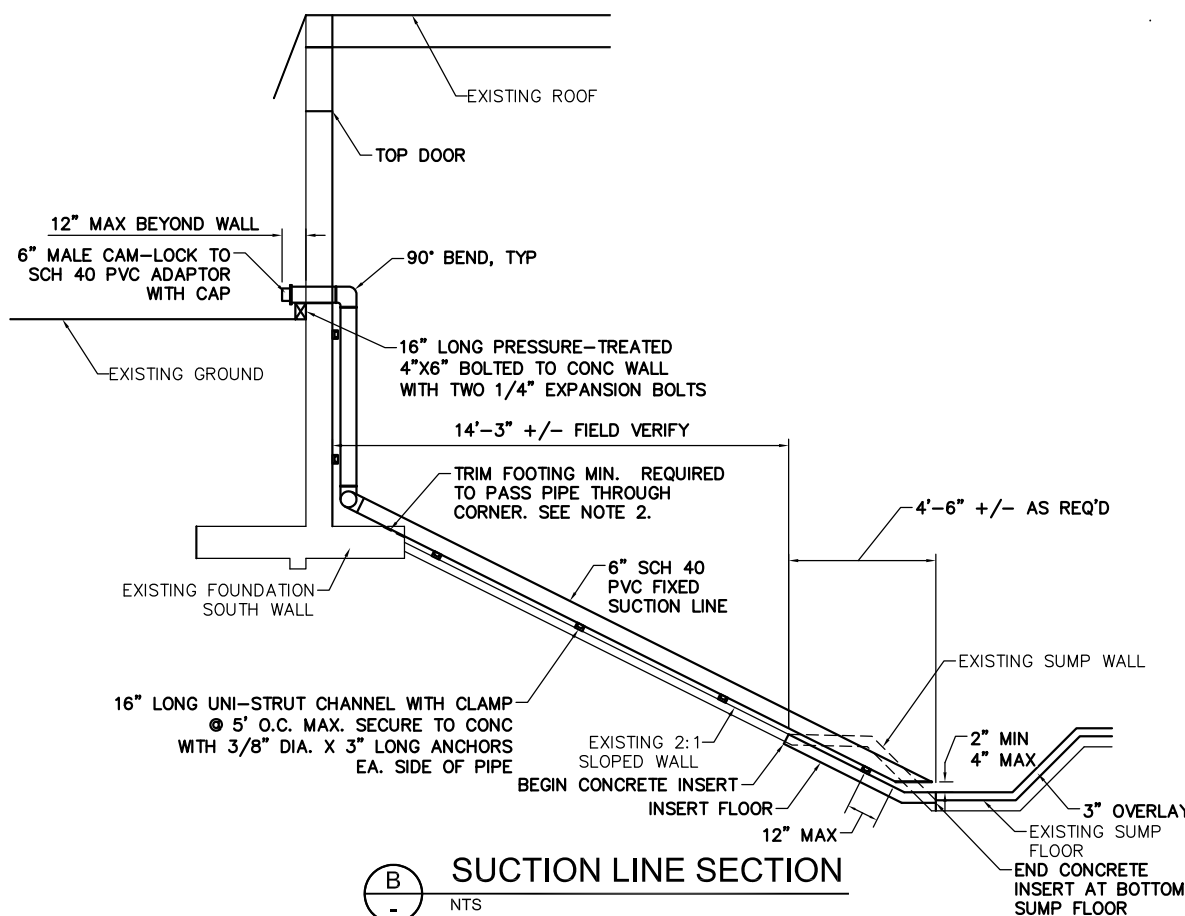
C
- NTS
CONCRETE INSERT - WEST ELEVATION



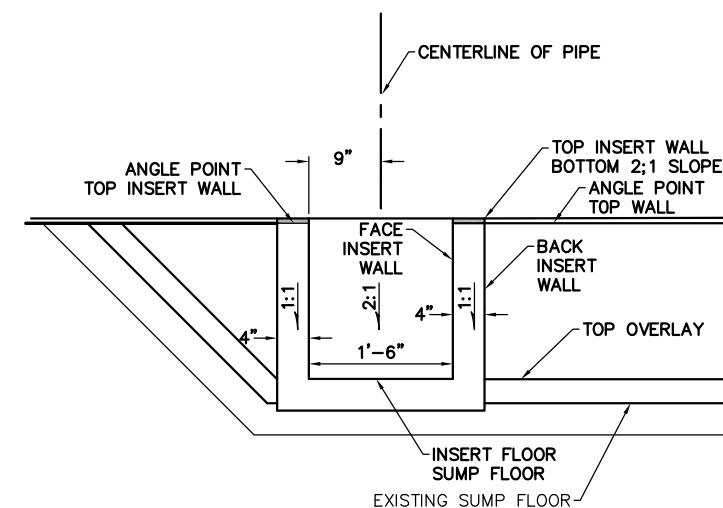
E
- NTS
SOUTH SUMP SUCTION LINE - SOUTH ELEVATION



A
6 NTS
SOUTH SUMP - PLAN ENLARGEMENT



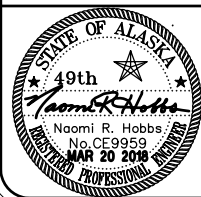
B
- NTS
SUCTION LINE SECTION



NOTE: WWM REINFORCEMENT FOR CONCRETE INSERT WALLS AND FLOOR SHALL BE 4X4X3/8. WWM NOT SHOWN FOR CLARITY.

D
- NTS
CONCRETE INSERT - SOUTH ELEVATION

- NOTES:
1. ALL JOINTS BETWEEN NEW AND OLD CONCRETE OR SEPARATE POURS OF NEW CONCRETE SHALL HAVE HYDROPHILIC WATER STOP. SEE DETAIL A, SHEET 6.
 2. REPAIR CONCRETE SURFACE EXPOSED BY TRIMMING OF FOOTING FOR SUCTION LINE WITH SPALL TXGEL BY HI-TECH SYS, OR APPROVED EQUAL.



Consulting Engineers • Land Surveyors • Construction Administration

PLANS DEVELOPED BY:
DOWL
5368 COMMERCIAL BOULEVARD
JUNEAU, ALASKA 99801
907-780-3533
AECL848



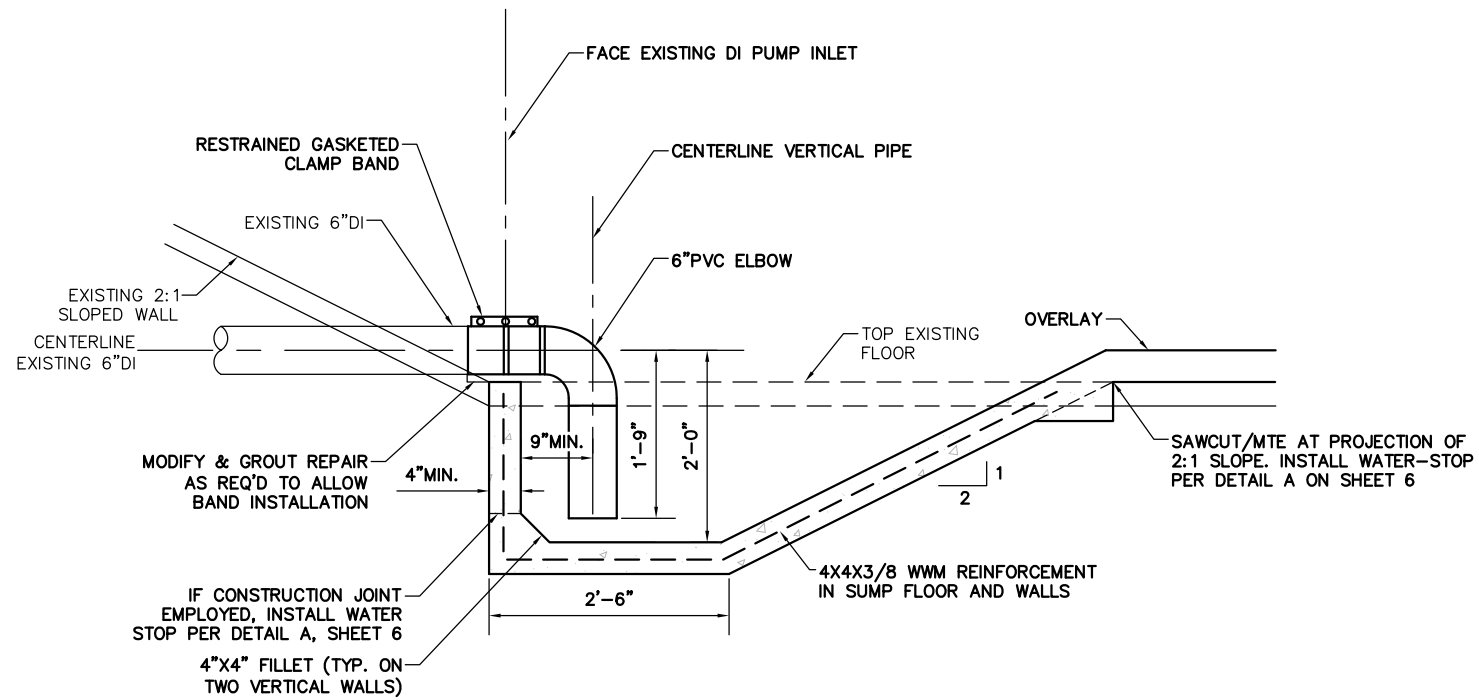
**JDWWTP AERATION BASIN
FLOOR OVERLAYS
CONTRACT NO. BE18-229**

**SOUTH SUMP DETAILS &
FIXED SUCTION LINE DETAILS**

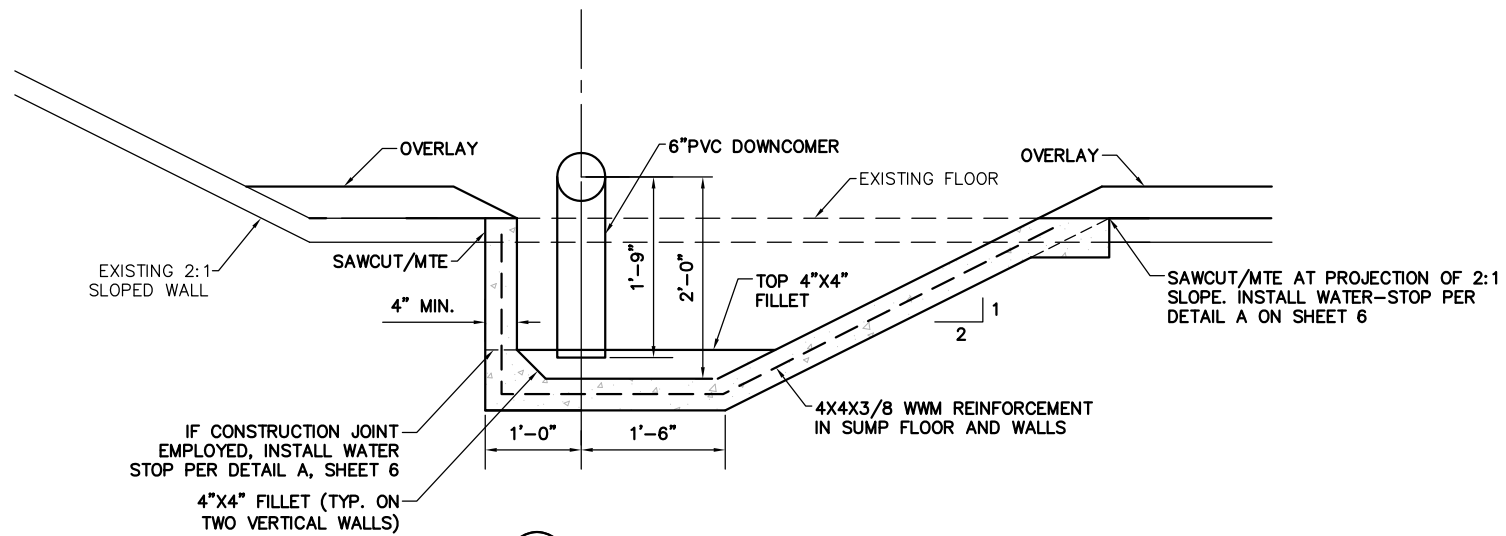
SHEET NO.
7
of
8

JOB No. J70926.02 DRAWN BY: STAFF DESIGNED BY: STAFF CHECKED BY: STAFF DATE: MAR. 2018

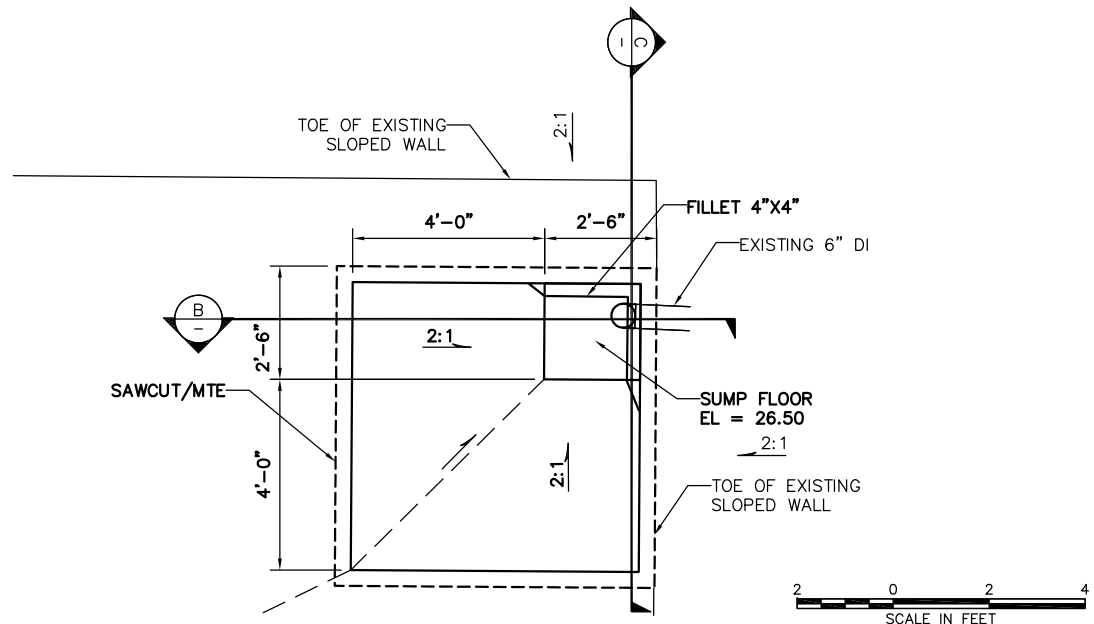
\\JUNU-FS\\JUNU-projects\\30\\70926-02\\65CAD\\SC-CS-DT-70926.02.dwg 2018-3-21 14:23:41



B SECTION
NTS

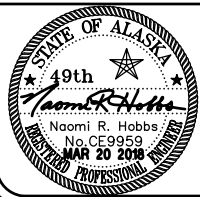


C SECTION
NTS



A AUXILIARY PUMP SUMP - PLAN ENLARGEMENT
NTS

- NOTES:
1. SUMP MAY BE PRE-CAST OR CAST-IN-PLACE.
 2. ALL JOINTS BETWEEN NEW AND OLD CONCRETE OR SEPARATE POURS OF NEW CONCRETE SHALL HAVE HYDROPHILIC WATER STOP. SEE DETAIL A, SHEET 6.



Consulting Engineers • Land Surveyors • Construction Administration

PLANS DEVELOPED BY:
DOWL
5368 COMMERCIAL BOULEVARD
JUNEAU, ALASKA 99801
907-780-3533
AECL848



**JDWWTP AERATION BASIN
FLOOR OVERLAYS
CONTRACT NO. BE18-229**

AUXILIARY PUMP SUMP DETAILS

SHEET NO.

8
of
8