

# SAYÉIK GASTINEAU COMMUNITY SCHOOL

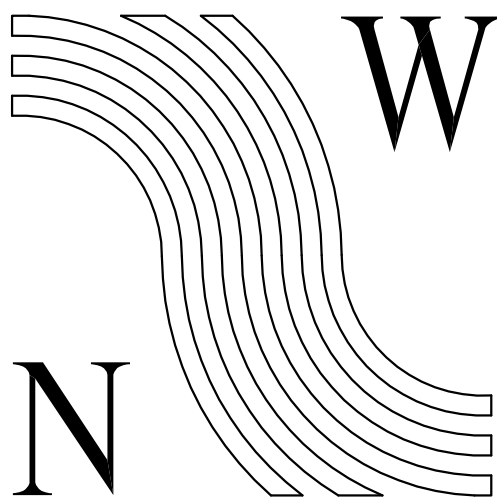
---

# NATIVE BURIAL GROUNDS MONUMENT

CBJ Contract No. BE18-081

Douglas Indian Association  
(T̥aaku Kw̥aan Tribal Government)  
City and Borough of Juneau  
Juneau School District  
Juneau, Alaska

OCTOBER 30, 2017



NorthWind  
Architects LLC  
Architecture & Construction Administration  
126 Seward Street  
Juneau, AK 99801  
907.586.6150

## SHEET INDEX

<u>GENERAL</u>	
G0.0	COVER
G0.1	NOTES
G0.2	ARCHITECTURAL SITE PLAN
<u>ARCHITECTURAL</u>	
A1.0	SITE 1 – PLAZA PANELS
A1.1	SITE 1 – PLAZA PANELS
A1.2	SITE 1 – PLAZA PANELS
A1.3	SITE 1 – PLAZA PANELS
A1.4	SITE 1 – PLAZA PANELS
A2.0	SITE 2 – RIVER PATH AND MEMORIAL
A2.1	SITE 2 – MEMORIAL DETAILS
A3.0	SITE 3 – SITE PROTECTION

SHEET SPECIFICATION:

- CONCRETE:
- CUTTING & REMOVAL. CLEANLY SAW-CUT EXISTING SLAB TO DEPTH OF 1.5” ALONG PRE-MARKED LINES. DO NOT OVER-CUT AT CORNERS. REMOVE CONCRETE TO DEPTH OF –1.5” BETWEEN CUTS. FULL LENGTH OF PANEL INSTALLATION. SAW-CUT EDGES  $\frac{1}{8}$ ” WITH GRINDER. PROTECT SURROUNDING CONCRETE.
  - CEMENTITIOUS MORTARS FOR BRONZE PANEL INSTALLATION: NON-METALIC, NON-SHRINKING, NON-ABSORPTIVE GROUT.

- MONUMENTAL STONE:
- SOURCE REGIONALLY. NATURAL AND SPLIT FACE SHAPES IN HIGH DENSITY, FRACTURE FREE MATERIAL – GREAY-GREEN COLOR. DRILL AS INDICATED FOR CONCEALED ELECTRICAL AND FIXTURE MOUNTING. DRILL AS REQUIRED FOR ART BRONZE MOUNTING. MILL AS REQUIRED TO CREATE FLAT BOTTOM SURFACE.

- BARRIER STONE:
- SOURCE REGIONALLY. NATURAL AND SPLIT FACE SHAPES ROUGHLY RECTILINEAR, IN HIGH DENSITY, FRACTURE FREE MATERIAL – GREAY-GREEN COLOR.

- PATHWAY STONE:
- COLLECT PAVING STONES IN COORDINATION WITH OWNER. GENERALLY DESCRIBED IN THE DETAILS AS THREE DIFFERENT SIZES: BORDER STONE, LARGE FLAGSTONE, SMALL RIVER STONE. INSTALLER TO SUBMIT WRITTEN STATEMENT OF UNDERSTANDING OF ARTISTIC INTENT, CONFIRMATION OF METHODOLOGY AND MATERIAL, AND STONE SAMPLES. BED IN SAND OVER COMPACTED D-1 BASE. COMPACT STONES TO FLUSH WITH ONE-ANOTHER, FILL UPPER 2” OF JOINTS BETWEEN STONES WITH POLYMERIC SAND. AVOID CUTTING TREE ROOTS TO THE EXTENT ROOTS MAY PROTRUDE NATURALLY INTO STONE ARRANGEMENT.

- ACCESSORY MATERIAL:
- D1 – COMPACTION FILL
  - BEDDING SAND
  - POLYMERIC SAND
  - GEOTEXTILE/WEED BARRIER FABRIC

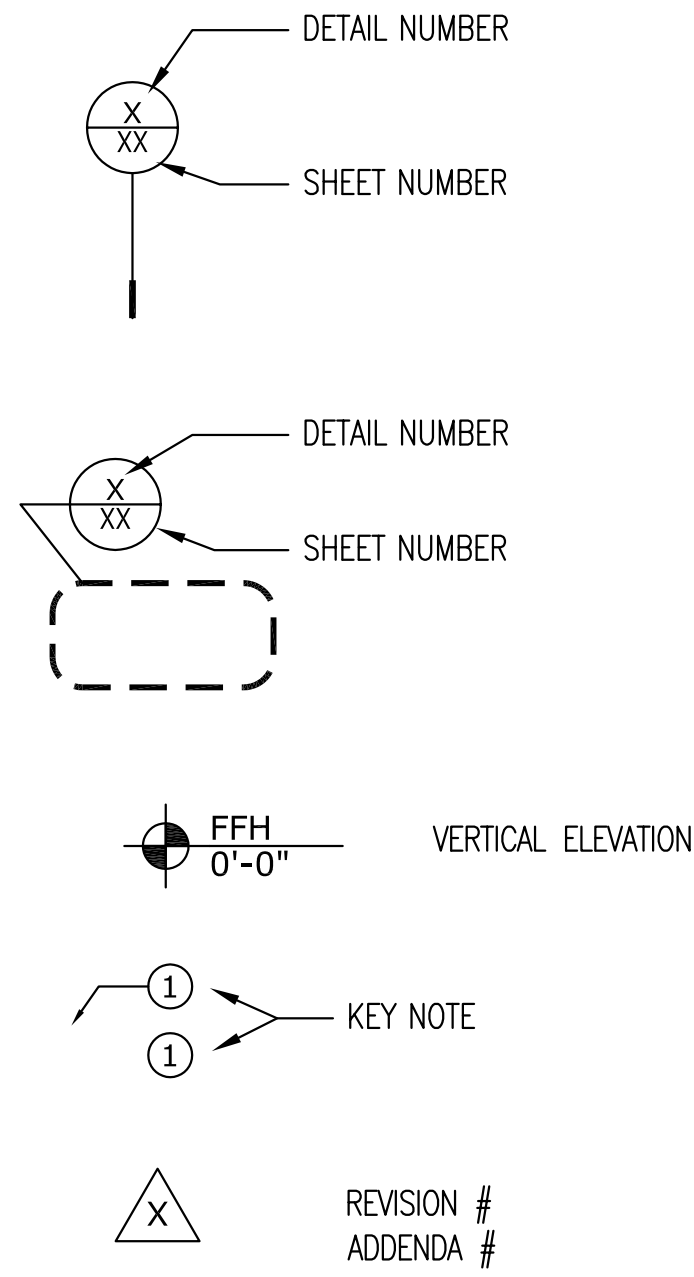
- CAST METALS:
- SILICON BRONZE, WEATHERED COPPER PATINA FINISH. 95% COPPER, 4% SILICONE, 1% MANGANESE, TYP. EVERDUR, PRODUCT 4951 BY BELMONT, OR AS APPROVED.
- DIGITALLY REPRODUCED IMAGE FOR FLAT BRONZE PANELS, INSET INTO CONCRETE PLAZA AND SURFACE MOUNTED TO MONUMENTAL STONE
  - INVESTMENT CASTING FOR "FIRE DISH" ART ELEMENT – NIC
- SUBMIT ALLOY SUBSTITUTIONS FOR REVIEW AND APPROVAL PRIOR TO CASTING
- SUBMIT PATINA SAMPLE FOR REVIEW AND APPROVAL PRIOR TO CASTING.
- SUBMIT FINAL SHOP DRAWINGS WITH ALL MATERIAL AND FINISH SPECIFICATION FOR REVIEW AND APPROVAL PRIOR TO CASTING.

- FOUNDRIES INCLUDE, BUT ARE NOT LIMITED TO:
- FRASER BRONZE WWW.FRASERBRONZE.COM (877) 264-1064 (SAND CASTING)
  - ARTWORKS FOUNDRY WWW.ARTWORKSFOUNDRY.COM (510)644-2735 (INVESTMENT CASTING)
  - VALLEY BRONZE WWW.VALLEBRONZE.COM (541) 432-7551
  - PORT TOWNSEND FOUNDRY WWW.PORTTOWNSENDFOUNDRY.COM (360) 385-6425
  - CASCADE BRONZE WWW.CASCADEBRONZE.COM (541)-360-8140

- ART DEVELOPMENT:
- "FIRE DISH" SHALL BE COMPLETED BY ARTIST TO PRODUCE PIECE AS GENERALLY DEFINED BY CONSTRUCTION DOCUMENTS. THIS ART IS NIC – FIRE DISH SHALL BE PRODUCED AND PROVIDED BY OTHERS FOR INSTALLATION BY CONTRACTOR. COORDINATION OF INSTALLATION METHOD SHALL OCCUR DURING PROCUREMENT AND PREPARATION OF STONE.

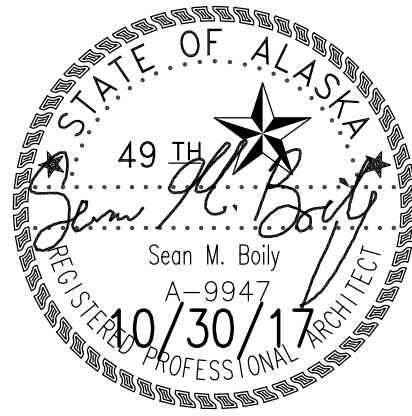
- ELECTRICAL: LIGHT FOR FIRE DISH:
- LINE-VOLTAGE POWER WILL BE ACCESSED AT EXISTING ILLUMINATED SIGN TO THE NORTH OF MONUMENT INSTALLATION. WEATHERPROOF AND SECURABLE TRANSFORMER BOX TO BE INSTALLED ON BACK SIDE OF CONCRETE WALL. SUB-GRADE RATED LOW VOLTAGE WIRE WILL BE EXTENDED FROM TRANSFORMER TO STONE MONUMENT TO SERVE LED WELL-LIGHT INTEGRATED INTO THE ART.
- TRANSFORMER: WET LISTED STAINLESS STEEL OR PLASTIC HOUSING, WATTAGE RATING SUITABLE FOR FIXTURE, CABLING AND DISTANCE TO FIXTURE.
  - WELL LIGHT: PURPOSE-BUILT 12V LED, 2700K-3000K COLOR TEMPERATURE, 7W. SEALED UNIT, WET LABEL, WITH BRONZE FACE FLANGE AND EITHER NONFERROUS METALLIC OR PLASTIC BODY. 2"-3" DIAMETER, TYPICAL. BORE OUT ROCK FACE TO FIT BODY. BASIS OF DESIGN: SPJ LIGHTING, SPJ-MW 1000-P-SH
  - CONTRACTOR TO PREPARE AND SUBMIT SUBMITTAL DATA FOR REVIEW BY OWNER TO ENSURE INTENT OF THE DESIGN IS MET..

DRAWING SYMBOLS LEGEND



GENERAL NOTES

1. THE CONTRACTOR IS RESPONSIBLE FOR THE FABRICATION AND INSTALLATION OF ALL MATERIALS AND EQUIPMENT IN ACCORDANCE WITH THE INTERNATIONAL BUILDING CODE (IBC 2009 EDITION, AS AMENDED BY THE CBJ) AND ALL ITS RELATED DOCUMENTS AND AMENDMENTS. ALL MATERIALS SHALL BE STORED, HANDLED, AND INSTALLED PER MANUFACTURERS' OR MATERIAL ASSOCIATIONS' INSTRUCTIONS AND RECOMMENDATIONS.
2. THE CONTRACTOR SHALL COORDINATE AND VERIFY ALL CONDITIONS AFFECTING THE PROJECT SCOPE OF WORK, AND WILL NOTIFY THE OWNER OF ANY DISCREPANCIES, AND/OR VARYING CONDITIONS. THE CONTRACTOR SHALL COORDINATE ALL CONSTRUCTION RELATED ACTIVITIES WITH THE OWNER PRIOR TO EXECUTING ANY WORK OF THIS CONTRACT.
3. CONTRACTOR IS TO PROVIDE A LIMITED SITE SURVEY TO NOTE PROPERTY BOUNDARY AND SITE FEATURES, AND PLACE DESIGN ELEMENTS RELATIVE TO DESIGN DOCUMENTS. SITE SURVEY WITH COMPONENTS OF THE WORK SHALL BE SUBMITTED FOR REVIEW AND APPROVAL PRIOR TO COMMENCEMENT OF THE WORK. EXISTING PROPERTY BOUNDARY SURVEY IS AVAILABLE FROM THE OWNER.
4. ALL ARCHITECTURAL ELEVATIONS ARE BASED FROM REFERENCE DATUM ELEVATION OF 0'-0" FROM TOP OF CONCRETE AT TOP OF STAIRS UP TO MAIN PLAZA.
5. CONTRACTOR SHALL PROTECT EXISTING CONCRETE SLABS AND SITE LANDSCAPE FEATURES AND SURFACES FROM DAMAGE DURING CONSTRUCTION. SITE SLABWORK, STAIRS AND CURBS SHALL NOT BE OVERLOADED OR SCARRED BY EQUIPMENT DURING CONSTRUCTION.
6. UTILITIES: OWNER WILL FURNISH ELECTRICAL POWER (120V) FOR EQUIPMENT AND LIGHTING. CONTRACTOR IS REQUIRED TO FURNISH ALL TEMPORARY SERVICES, CONSTRUCTION LIGHTING AND HEAT. CONTRACTOR SHALL PROVIDE AND MAINTAIN SEPARATE TOILET FACILITIES DURING CONSTRUCTION.
7. USE OF THE SITE: CONTRACTOR WILL BE RESPONSIBLE FOR CONSTRUCTION AREA SECURITY THROUGH THE DURATION OF THE CONTRACT'S CONSTRUCTION. CONTRACTOR MAY PROVIDE AND INSTALL TEMPORARY CHAIN-LINK OR PLASTIC SAFETY FENCING BETWEEN SCHOOL AND THE WORK AREA, BUT SHALL AT ALL TIMES PRESERVE ACCESS TO THE FRONT DOOR OF THE SCHOOL FROM ONE OF THE TWO STREETS.
8. INSPECTION: THE CONTRACTOR IS TO NOTIFY OWNER OF DAMAGED MATERIALS OBSERVED DURING CONSTRUCTION. REPLACE DAMAGED MATERIALS AS DIRECTED AND AUTHORIZED BY THE OWNER. WORK OUTSIDE THE SCOPE OF THIS CONTRACT SHALL, ON THE AUTHORIZATION OF THE OWNER, BE REPLACED AT ADDITIONAL NEGOTIATED COST TO THE CONTRACT.
9. THE CONTRACTOR SHALL ENSURE COORDINATION OF TRADES AND CONFIRM ALL CONDITIONS NECESSARY TO PROCEED WITH ANY COMPONENT OF THE WORK, INCLUDING PREPARATION OF ANY EXISTING MATERIAL OR SURFACE TO RECEIVE FINISHES OR EQUIPMENT.
10. ALL ITEMS IDENTIFIED IN THESE CONSTRUCTION DOCUMENTS ARE NEW AND TO BE PROVIDED AS A PART OF THIS CONTRACT, UNLESS OTHERWISE NOTED.
11. THIS PROJECT IS A MEMORIAL TO HONOR INDIVIDUALS, FAMILIES, AND THE TLINGET COMMUNITY OF DOUGLAS ISLAND, WHOSE ANCESTORS WERE BURIED ON THIS SITE. AS SUCH THE SITE HAS BEEN IDENTIFIED AS HAVING HUMAN REMAINS BURIED WITHIN ITS BOUNDARY. SPECIAL CONSIDERATION SHALL BE GIVEN TO MINIMIZING DISTURBANCES OF GRADE BEYOND INDICATED DEPTHS IN THE AREA OF THE WORK. THE INTENT IS TO EXECUTE THE WORK OF THIS CONTRACT WITH MINIMAL GRADE EXCAVATION AND SITE DISTURBANCE. EXCAVATION SHALL BE NO MORE THAN 6" IN AREAS NOT ALREADY EXCAVATED AS A PART OF THE RECENT SCHOOL RENOVATION PROJECT, SO AS TO LEAVE SUBSURFACE UNDISTURBED. SHOULD EVIDENCE OF GRAVE SITE OR HUMAN REMAINS BE UNCOVERED, THE WORK SHALL BE STOPPED AND THE OWNER NOTIFIED IMMEDIATELY. THE OWNER SHALL CONTACT THE APPROPRIATE AUTHORITIES AND COORDINATE PROCEDURES DEEMED NECESSARY TO ADDRESS THE FINDINGS. THE CONTRACTOR SHALL MAKE REASONABLE ACCOMMODATIONS FOR SUCH PROCEDURES. AN ARCHAEOLOGIST SHALL BE ENGAGED BY THE CONTRACTOR TO PROVIDE EXCAVATION SUPERVISION OF ANY AREAS WITH AN EXCAVATION DEPTH OF MORE THAN 6" INTO UNDISTURBED MATERIALS.
12. DRAWING SCALE: THIS SET OF DRAWINGS HAS BEEN PRODUCED WITH SCALE INDICATORS AND BARS TO PRINT FULL SIZE 22"x34" SHEET SETS. FOR THE PURPOSE OF CLARITY, 22"x34" DRAWING SETS WILL BE IDENTIFIED AS "FULL-SIZE" SETS, AND 11"x17" DRAWING SETS WILL BE REFERRED TO AS "HALF-SIZE" SETS. FOR THE PURPOSE OF ACCURACY, VERIFY ALL MEASURED DIMENSIONS WITH SCALE BARS PROVIDED FOR AND THE SCALE VERIFICATION BAR IN THE ARCHITECTURAL TITLE BLOCK.
13. SUBMITTAL REQUIREMENTS: CONTRACTOR TO PREPARE TO SCALE MEASURED SHOP DRAWINGS AND PRODUCT DATA FOR EACH OF THE KEY ELEMENTS, WITH SAMPLES AS INDICATED, INCLUDING:
  - MONUMENT STONE, INCLUDING MILLING AND DRILLING AS REQUIRED FOR LIGHTING INSTALL AND BRONZE ELEMENT MOUNTING (SHOP DRAWING AND STONE SAMPLE).
  - BRONZE PLAZA PANELS COORDINATED AND SUBMITTED WITH A CONCRETE CUTTING PLAN FOR THE PLAZA SLAB (SHOP DRAWINGS AND BRONZE SAMPLE, WITH PATINA AND SURFACE TREATMENT)
  - MONUMENT PANEL AND MOUNTING BRACKET (SHOP DRAWINGS)
  - MONUMENT LIGHTING (SHOP DRAWING AND PRODUCT DATA)
  - PATH PAVER LAYOUTS (SHOP DRAWINGS – TWO-TIER REVIEW)



**NorthWind Architects LLC**

126 SEWARD ST.  
JUNEAU, AK 99801  
PH #907.586.6150  
F x #907.586.6181  
WWW.NORTHWINDARCH.COM

IF THE ABOVE DIMENSION DOES NOT EQUAL EXACTLY 1", THIS DRAWING HAS BEEN ENLARGED OR REDUCED, AFFECTING ALL LABELED SCALES

**SAYÉIK GASTINEAU COMMUNITY SCHOOL**

**Native Burial Grounds Monument**

Douglas Indian Association  
(Taaku Kwään Tribal Government)  
City and Borough of Juneau  
CBJ Engineering Contract No. BE18-081

SHEET TITLE:	
NOTES	
DATE:	Oct. 30, 2017
REVISION:	reissue
CHECKED BY:	SB
DRAWN:	SB
SHEET #	

GO.1

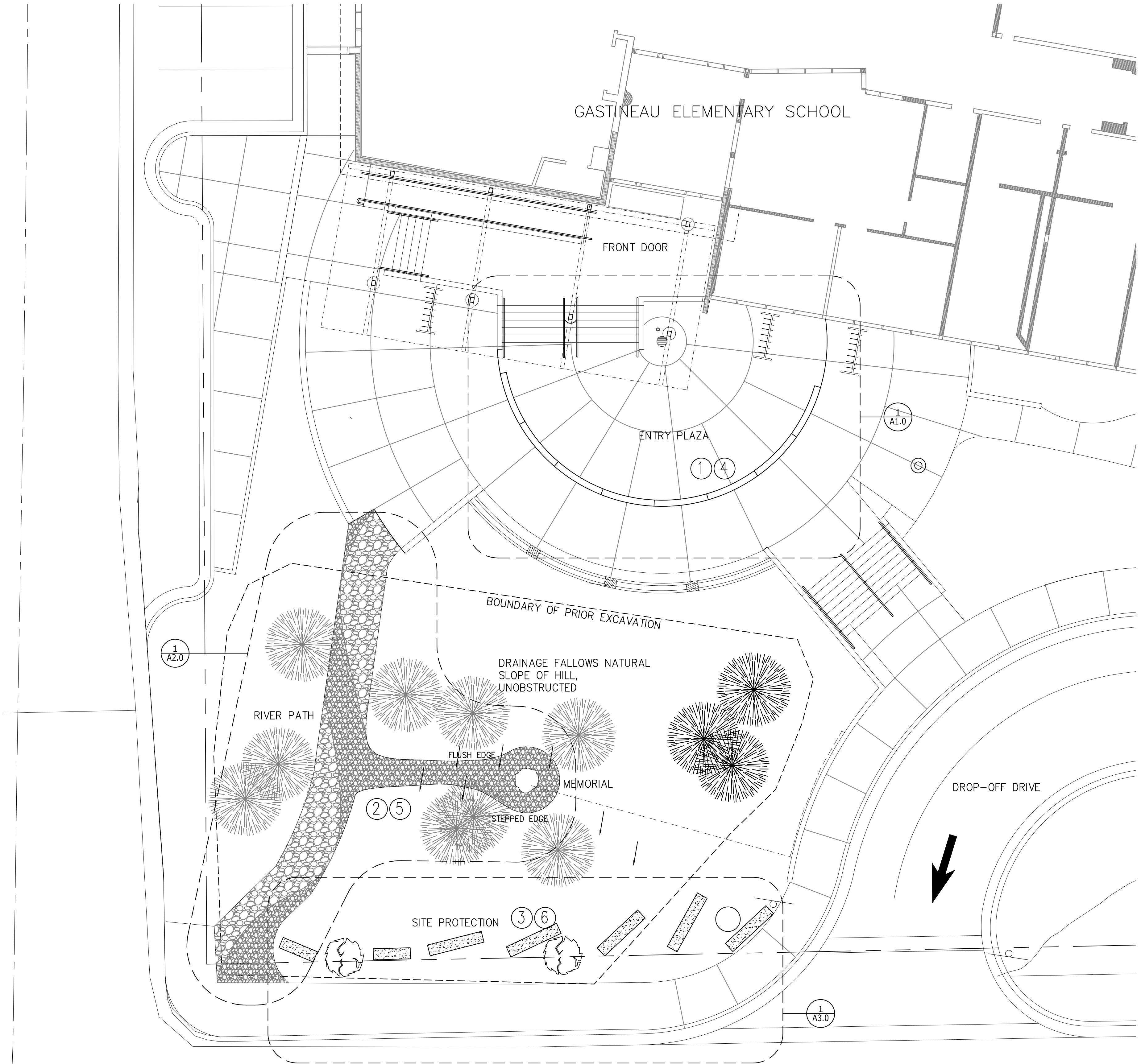


SITE GENERAL NOTES:

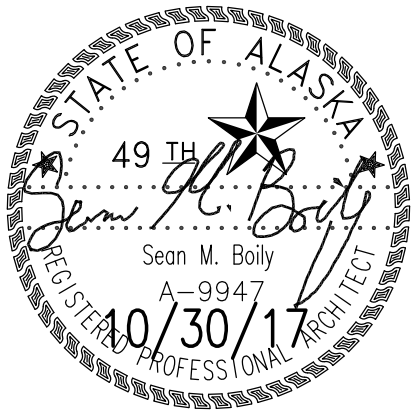
1. INSTALLATION OF SITE 1 WORK SHALL INCLUDE CAREFUL MASKING OF EXISTING CONCRETE SLABS AND PARTIAL CUTTING, WITH REMOVAL OF MATERIAL TO A DEPTH OF 1.5". DO NOT CUT REINFORCING STEEL. DO NOT OVER-CUT JOINTS.
2. INSTALLATION OF WORK AT SITE 2 INVOLVES MINIMAL EXCAVATION. REMOVE NO MORE THAN 4" TOP SOIL AT THE AREAS OF WORK AND PROTECT SURROUNDING GRADE AND TREE ROOTS. INSTALL LAYER OF GEOTEXTILE MATERIAL AND 4"-6" CRUSHED ROCK FILL MATERIAL, COMPACTED, AS BASE FOR FLAGSTONE-LAYED PATH. PROVIDE COMPACT FILL FLUSH TO TOP OF STONE PAVING AT MONUMENT BASE, TO RECEIVE MONUMENT STONE.
3. INSTALLATION OF WORK AT SITE 3 INVOLVES MINIMAL EXCAVATION, ONLY TO ESTABLISH LEVEL PLACEMENT. STONE ELEMENTS ARE TO BE PLACED DIRECTLY ON GRADES.

SITE PLAN KEY NOTES:

- ① SITE 1 – SHEET A1.0. BRONZE PANEL EMBED AT PLAZA
- ② SITE 2 – SHEET A2.0 – PATH AND FIRE DISH MONUMENT
- ③ SITE 3 – SHEET A3.0 – SITE PROTECTION AT STREET
- ④ MASK AND PROTECT EXISTING CONCRETE SLABS WHEN CUTTING AND REMOVING CONCRETE, AND WHEN PLACING BRONZE PANELS. CLEAN ANY AND ALL MORTAR OVERSPILL. EASE CONCRETE EDGES WITH GRINDER. BRONZE INSTALLED FLUSH WITH TOP OF ADJACENT SLABS.
- ⑤ PATH AND MONUMENT BASE PREP: 4" MAXIMUM TOPSOIL EXCAVATION. NOTE IN AREA OF MONUMENT BUILD UP ON THE DOWN-HILL EDGE OF PATH MAY BE REQUIRED TO LIMIT CROSS-SLOPE OF STONE PAVING.
- ⑥ MONOLITHIC STONE: PLACE WITH MINIMAL EXCAVATION.



① ARCHITECTURAL SITE PLAN - ENLARGED SITE IDENTIFICATION  
1/8" = 1'-0"



**NorthWind Architects LLC**  
126 SEWARD ST.  
JUNEAU, AK 99801  
PH #907.586.6150  
FX #907.586.6181  
WWW.NORTHWINDARCH.COM

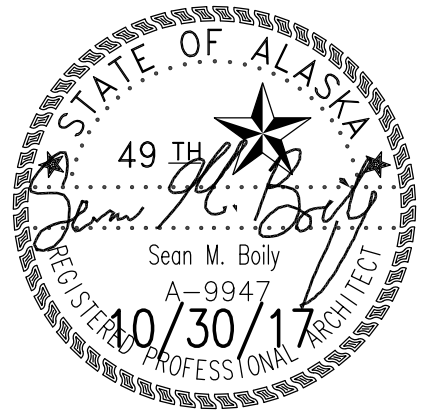
IF THE ABOVE DIMENSION DOES NOT EQUAL EXACTLY 1", THIS DRAWING HAS BEEN ENLARGED OR REDUCED, AFFECTING ALL LABELED SCALES

**SAYÉIK GASTINEAU COMMUNITY SCHOOL**  
Native Burial Grounds Monument  
Douglas Indian Association  
(Taaku Kwään Tribal Government)  
City and Borough of Juneau  
C&J Engineering Contract No. BE18-081

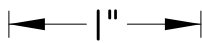
SHEET TITLE:  
**ARCHITECTURAL SITE PLAN**

DATE: Oct. 30, 2017  
REVISION: reissue  
CHECKED BY: SB  
DRAWN: SB

SHEET #  
**GO.2**



126 SEWARD ST.  
JUNEAU, AK 99801  
PH #907.586.6150  
FX #907.586.6181  
WWW.NORTHWINDARCH.COM



IF THE ABOVE DIMENSION DOES NOT  
EQUAL EXACTLY 1", THIS DRAWING  
HAS BEEN ENLARGED OR REDUCED,  
AFFECTING ALL LABELED SCALES

SAYÉIK GASTINEAU COMMUNITY SCHOOL

Native Burial Grounds Monument

Douglas Indian Association  
(Taakú Kwáan Tribal Government)  
City and Borough of Juneau  
CBJ Engineering Contract No. BE18-081

SHEET TITLE:

SITE 1  
PLAZA PANELS

DATE: Oct. 30, 2017

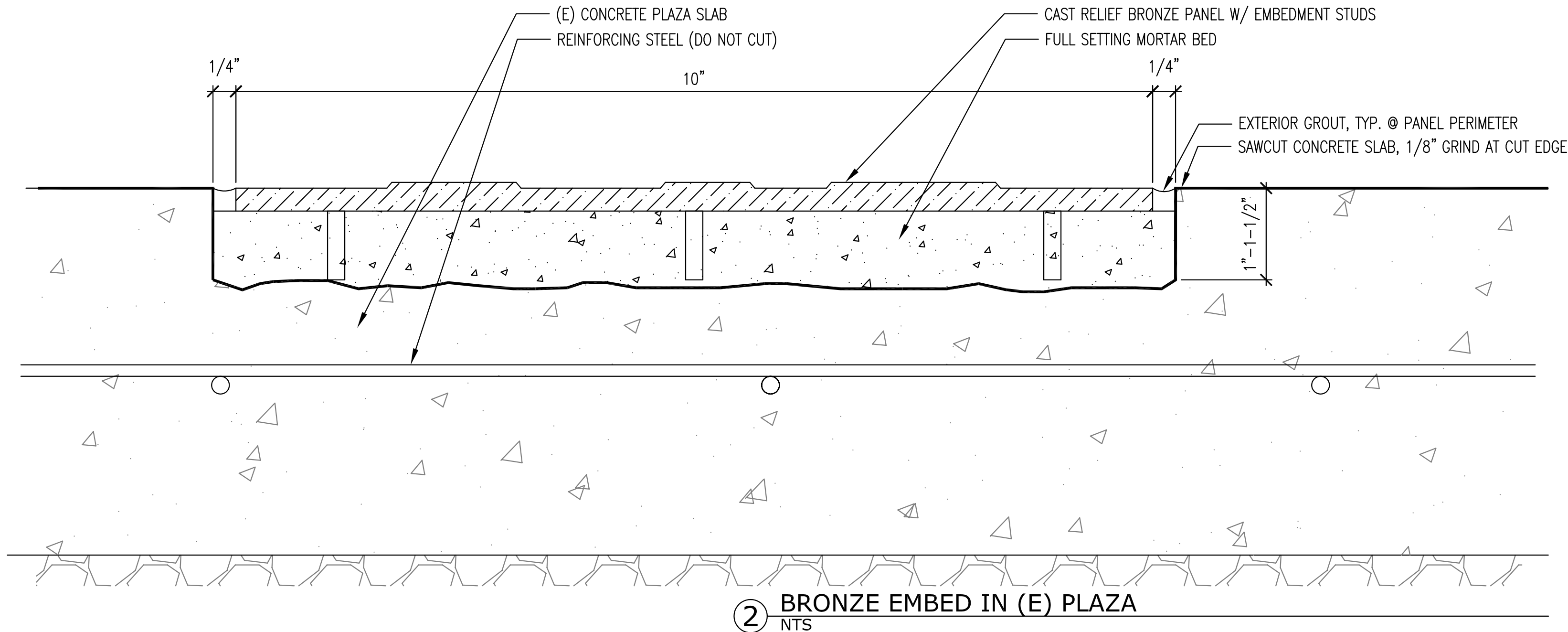
REVISION: reissue

CHECKED BY: SB

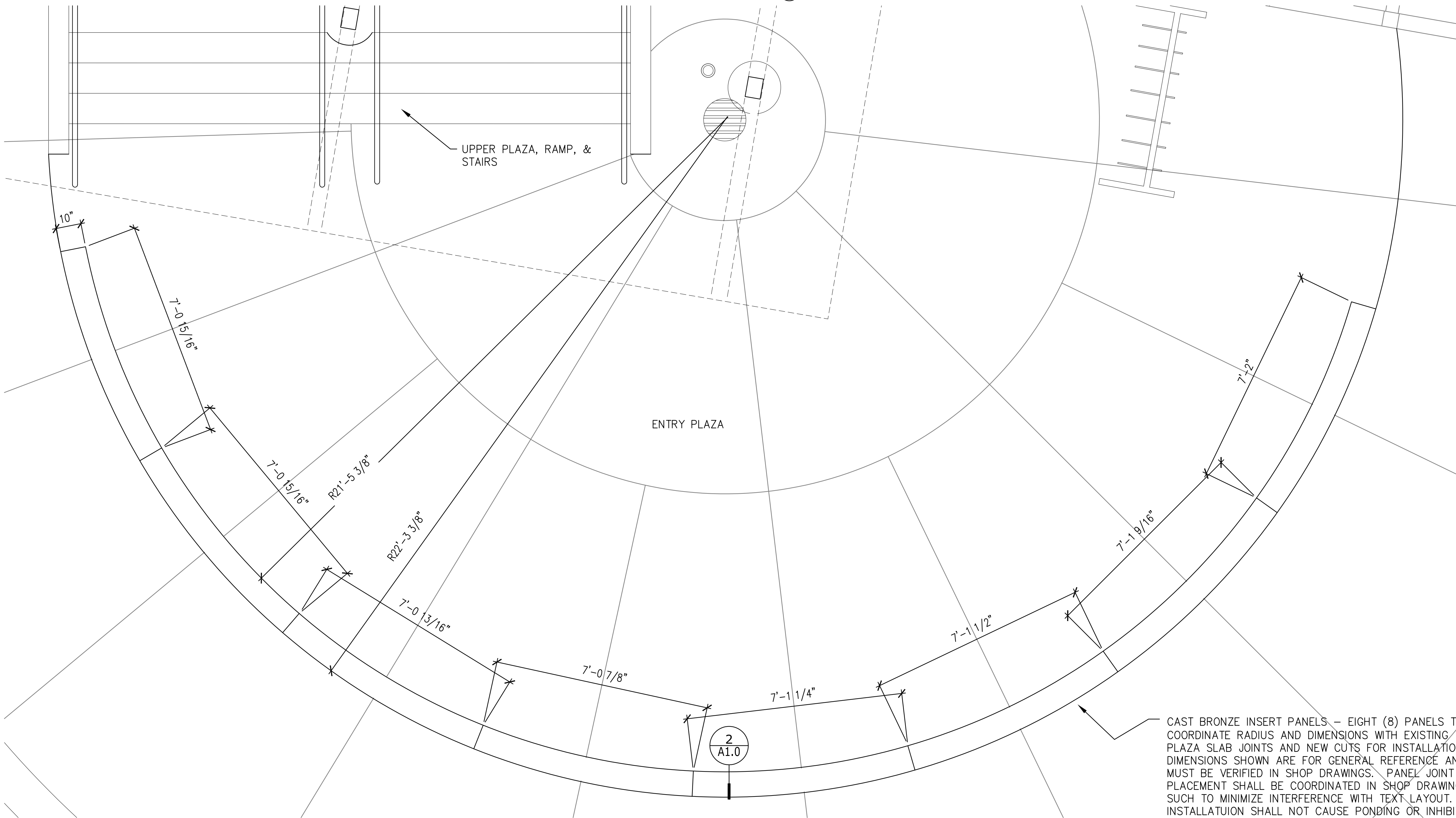
DRAWN: SB

SHEET #

A1.0

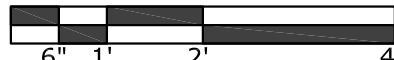


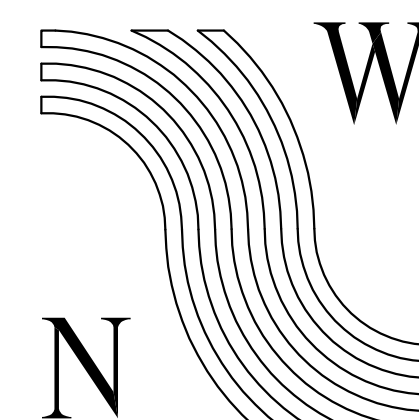
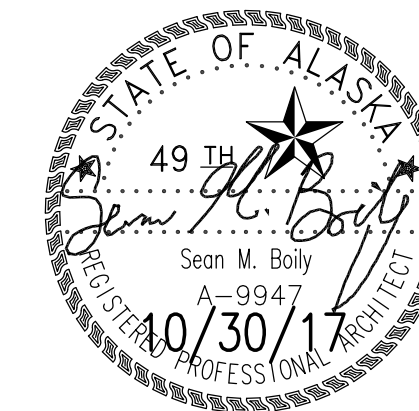
2 BRONZE EMBED IN (E) PLAZA  
NTS



1 PLAZA STORY PANELS  
1/2" = 1'-0"

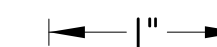
CAST BRONZE INSERT PANELS – EIGHT (8) PANELS TOTAL.  
COORDINATE RADIUS AND DIMENSIONS WITH EXISTING  
PLAZA SLAB JOINTS AND NEW CUTS FOR INSTALLATION.  
DIMENSIONS SHOWN ARE FOR GENERAL REFERENCE AND  
MUST BE VERIFIED IN SHOP DRAWINGS. PANEL JOINT  
PLACEMENT SHALL BE COORDINATED IN SHOP DRAWINGS  
SUCH TO MINIMIZE INTERFERENCE WITH TEXT LAYOUT.  
INSTALLATION SHALL NOT CAUSE PONDING OR INHIBIT  
DRAINAGE OF PLAZA





NorthWind  
Architects LLC

126 SEWARD ST.  
JUNEAU, AK 99801  
PH #907.586.6150  
FX #907.586.6181  
WWW.NORTHWINDARCH.CO



IF THE ABOVE DIMENSION DOES NOT  
EQUAL EXACTLY 1", THIS DRAWING  
HAS BEEN ENLARGED OR REDUCED  
AFFECTING ALL LABELED SCALES

**SAYEIK GASTNEAU COMMUNITY SCHOOL**

## Native Burial Grounds Monument

Douglas Indian Association  
(Taḡu Kwān Tribal Government)  
City and Borough of Juneau  
CBJ Engineering Contract No. BE18-081

SHEET TITLE:

SITE 1  
PLAZA PANELS

DATE: Oct. 30, 2017

REVISION: reissue

CHECKED BY: SB

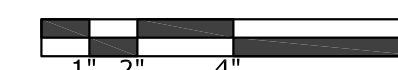
DRAWN: SB

SHEET #

## A1.1

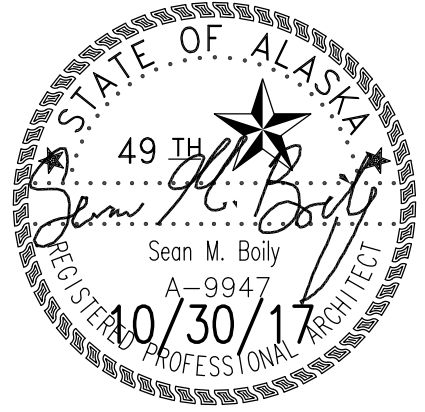
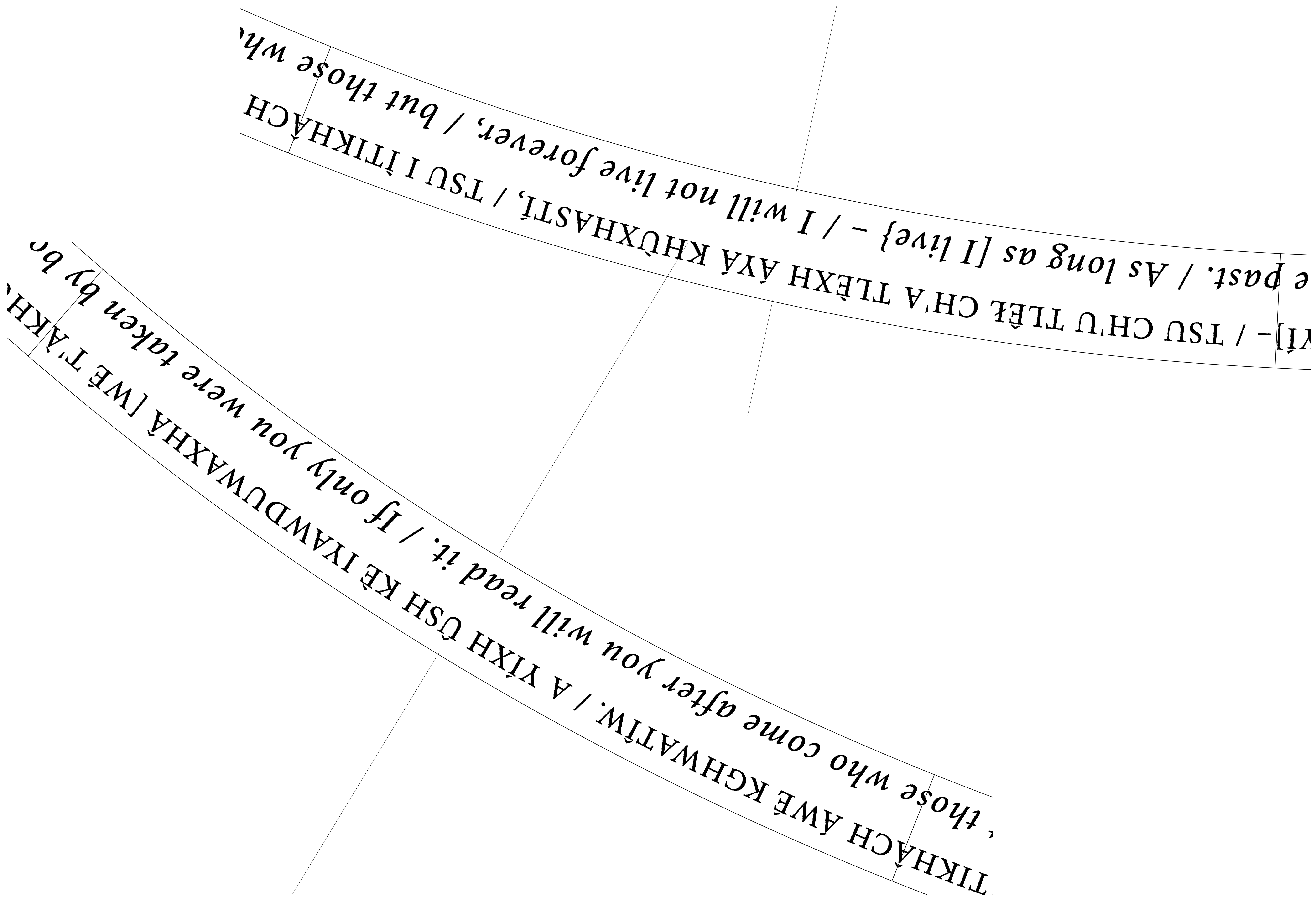
① BRONZE PANEL SAMPLES  
3" = 1'-0"

ARCHITECT WILL PROVIDE DIGITAL PDF FILES OF PANELS COORDINATED WITH SHOP DRAWING/DIMENSION COORDINATION BY CONTRACTOR. THESE WILL BE REQUIRED BY FOUNDRY FOR MANUFACTURE. PANELS WILL BE SET IN MORTAR BED IN CUT-OUT IN PLAZA SLAB.



© NorthWind Architects, LLC  
NWA-1517 DOUGLAS NATIVE BURIAL MONUMENT





**N**  
**NorthWind**  
**Architects LLC**  
126 SEWARD ST.  
JUNEAU, AK 99801  
PH #907.586.6150  
FX #907.586.6181  
WWW.NORTHWINDARCH.COM

IF THE ABOVE DIMENSION DOES NOT  
EQUAL EXACTLY 1", THIS DRAWING  
HAS BEEN ENLARGED OR REDUCED,  
AFFECTING ALL LABELED SCALES

**SAYÉIK GASTINEAU COMMUNITY SCHOOL**  
**Native Burial Grounds Monument**  
Douglas Indian Association  
(Taaku Kwään Tribal Government)  
City and Borough of Juneau  
CBJ Engineering Contract No. BE18-081

SHEET TITLE:  
**SITE 1**  
**PLAZA PANELS**

DATE: Oct. 30, 2017  
REVISION: reissue  
CHECKED BY: SB  
DRAWN: SB

SHEET #  
**A1.2**