

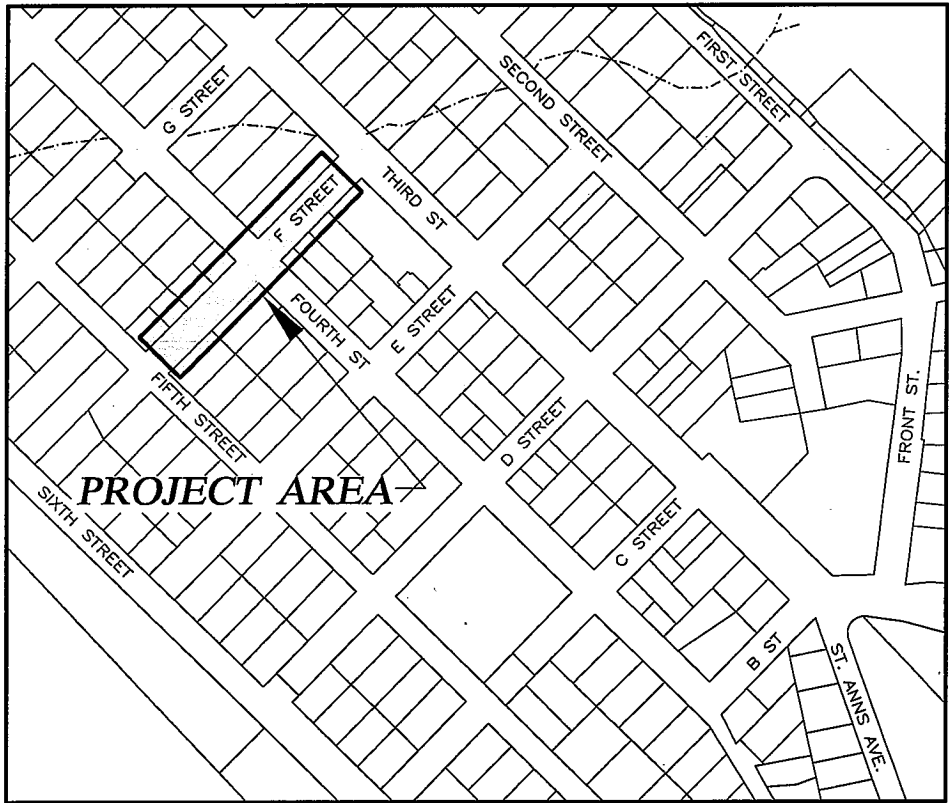
# F STREET RECONSTRUCTION

CONTRACT NO. BE17-215



## INDEX

DESCRIPTION	SHEET NO.
COVER SHEET	1 OF 9
LEGEND, ABBREVIATIONS, AND GENERAL NOTES	2 OF 9
TYPICAL SECTION AND DETAILS	3 OF 9
DETAILS	4 OF 9
F STREET - HORIZONTAL AND VERTICAL CONTROL, CURB AND GUTTER LAYOUT AND GRADES	5 OF 9
F STREET - HORIZONTAL AND VERTICAL CONTROL, CURB AND GUTTER LAYOUT AND GRADES	6 OF 9
PLAN - F STREET BOP TO STA 13+00	7 OF 9
PLAN - F STREET STA 13+00 TO STA 15+35	8 OF 9
PLAN - F STREET STA 15+35 TO EOP	9 OF 9



CITY AND BOROUGH OF JUNEAU  
★ ALASKA'S CAPITAL CITY  
ENGINEERING DEPARTMENT

LEGEND

DESCRIPTION	EXISTING	REMOVE	PROPOSED
BURIED ELECTRICAL UTILITIES			
CABLE TV			
POWER			
TELEPHONE			
CATCH BASIN			
CURB & GUTTER			
FIRE HYDRANT			
MAILBOX			
PROJECT CENTERLINE			
PROPERTY LINE			
POWER POLE			
SANITARY SEWER			
SANITARY SEWER MANHOLE			
STORM DRAIN			
SURVEY MONUMENT			
VALLEY GUTTER			
WATER LINE			
WATER VALVE BOX			

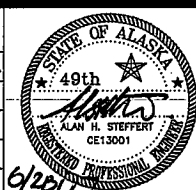
ABBREVIATIONS

AC	ASPHALT PAVMENT
CB	CATCH BASIN
CMP	CORRUGATED METAL PIPE
CPP	CORRUGATED POLYETHYLENE PIPE
CONC	CONCRETE
CTE	CONNECT TO EXISTING
DI	DUCTILE IRON
DIA	DIAMETER
DT	DITCH
FG	FINISHED GRADE
INV	INVERT
LG	LIP OF GUTTER
LT	LEFT
MH	MANHOLE
NTS	NOT TO SCALE
PVC	POLYVINYL CHLORIDE PIPE
RT	RIGHT
SHLD	SHOULDER
STA	STATION
STD	STANDARD
TBG	TOP BACK OF GUTTER
TP	TOP OF PAVEMENT
TSW	TOP OF SIDEWALK
UD	UNDERDRAIN


GENERAL NOTES

1. LARGE BOULDERS, STUMPS, LOGS, ORGANICS AND GROUND WATER MAY BE ENCOUNTERED AT VARIOUS DEPTHS DURING EXCAVATION OPERATIONS.
2. CONTRACTOR SHALL ASSURE GARBAGE PICKUP AND DAILY MAIL SERVICE WILL BE UNINTERRUPTED TO ALL RESIDENCES AFFECTED BY THIS PROJECT.
3. CBJ ENGINEERING STANDARD DETAILS BOOK, 4TH EDITION, DATED AUGUST, 2011 IS MADE PART OF THIS CONTRACT, WITH CURRENT REVISIONS AS APPLICABLE.
4. EXISTING PIPE LOCATIONS ARE DERIVED FROM CBJ AS-BUILTS OR FIELD LOCATED. ACTUAL LOCATIONS MAY VARY FROM THOSE SHOWN. DEPTH OF THE EXISTING PIPES SHOWN ON THE ELEVATIONS ARE ASSUMED. CONTRACTOR SHALL FIELD VERIFY THE LOCATION OF EACH EXISTING SERVICE PIPE PRIOR TO INSTALLING THE RESPECTIVE SEWER, WATER OR STORM MAIN. DIAL BEFORE YOU DIG 586-1333. ACS LOCATES, CALL 811.
5. GRADING AND ALIGNMENT ARE SUBJECT TO MINOR REVISIONS BY THE ENGINEER.
6. LOCATION OF STORM CURB INLETS, PIPING AND PIPE LENGTHS ARE SUBJECT TO MINOR REVISIONS BY THE ENGINEER.
7. PROPERTY LINE LOCATIONS USED IN THESE PLANS ARE DERIVED FROM RECORD PLATS AND DO NOT REPRESENT BOUNDARY SURVEY. EXISTING RECORD PLATS DO NOT CLOSE WITH EACH OTHER IN SOME CASES. THE PROPERTY LINES SHOWN ON THESE PLANS ARE A BEST FIT APPROXIMATION OF CLOSURE.
8. ALL ITEMS DESIGNATED TO BE REMOVED SHALL BE DISPOSED OF AT AN APPROVED DISPOSAL SITE, EXCEPT AS NOTED IN THE CONTRACT DOCUMENTS.
9. CONTRACTOR SHALL REFERENCE ALL EXISTING PROPERTY CORNER MONUMENTS (I.E. REBARS, CONCRETE NAILS, BRASS CAP MONUMENT AND ETC.) PRIOR TO CONSTRUCTION AND REMONUMENT AFTER SURFACING IS REPLACED. ALL WORK SHALL BE DONE BY, OR UNDER THE DIRECTION OF, AN ALASKA REGISTERED LAND SURVEYOR.
10. ALL ASPHALT PAVEMENT TO BE REMOVED AND DISPOSED OF SHALL BE DELIVERED TO A STOCKPILE AREA AT THE LEMON CREEK CITY PIT TO BE DESIGNATED BY THE ENGINEER. CONTACT THE ENGINEER FOR THE EXACT LOCATION OF THE STOCKPILE.
11. THE PLAN SHEETS DO NOT SHOW MOST OF THE TREES AND OTHER VEGETATION THAT WILL BE ENCOUNTERED DURING CONSTRUCTION ACTIVITIES. NO TREES OR OTHER VEGETATION ARE TO BE REMOVED OR DAMAGED, UNLESS SHOWN ON THE DRAWINGS OR DIRECTED BY THE ENGINEER.
12. THE CONTRACTOR SHALL NOT STORE MATERIALS OR EQUIPMENT, OR OPERATE EQUIPMENT WITH ITS TRACKS OR WHEELS PLACED ON PRIVATE PROPERTY, WITHOUT WRITTEN APPROVAL OF THE PROPERTY OWNER.

Revisions		
Date	Description	Intls.



Prepared by:

CITY AND BOROUGH OF JUNEAU

★ ALASKA'S CAPITAL CITY

ENGINEERING DEPARTMENT

F STREET RECONSTRUCTION

CONTRACT NO. BE17-215

LEGEND, ABBREVIATIONS AND GENERAL NOTES

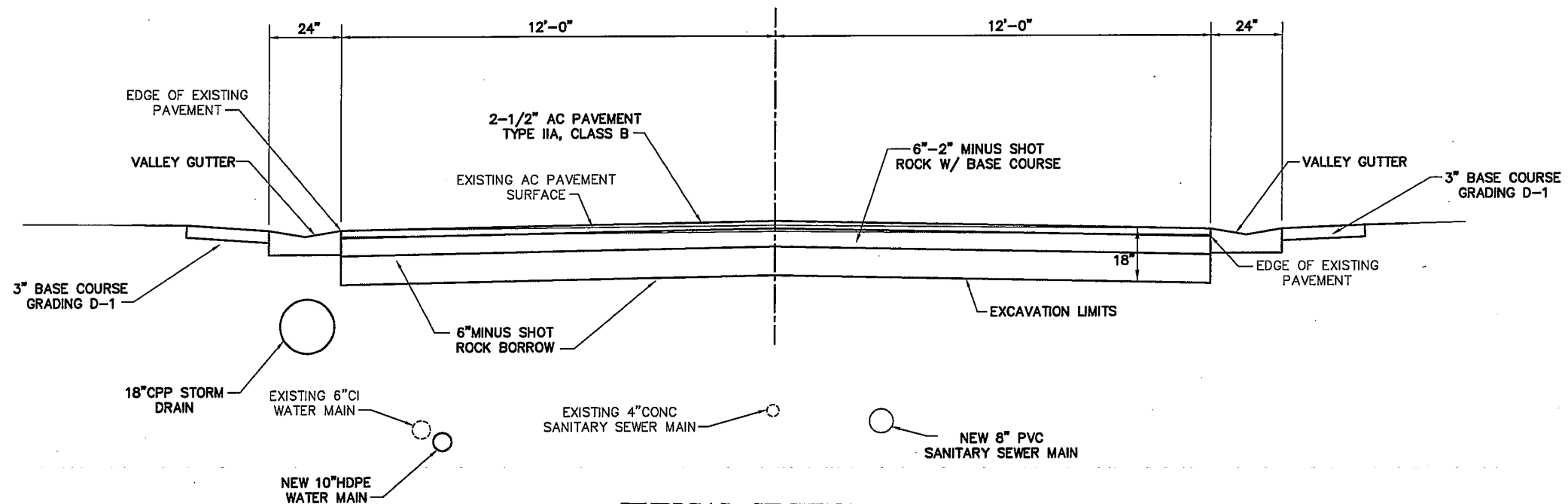
DATE: 6/14/17

DRAWN BY: STAFF

SCALE: AS SHOWN

SHEET:

2 of 9

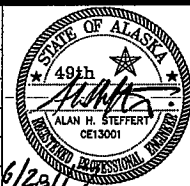


### TYPICAL SECTION

NTS

#### Revisions

Date	Description	Intls.



Prepared by:  
CITY AND BOROUGH OF JUNEAU  
★ ALASKA'S CAPITAL CITY  
ENGINEERING DEPARTMENT

## F STREET RECONSTRUCTION

CONTRACT NO. BE17-215

### TYPICAL SECTION AND DETAILS

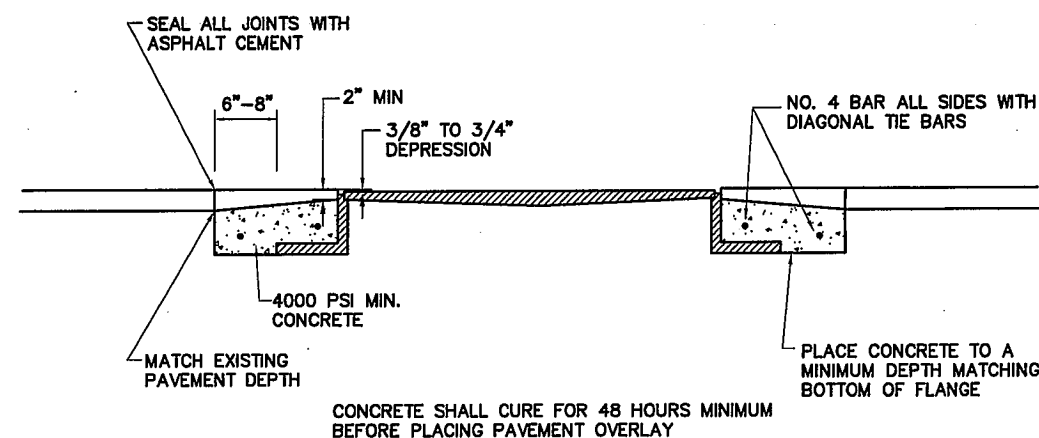
DATE: 6/14/17

DRAWN BY: STAFF

SCALE: AS SHOWN

SHEET:

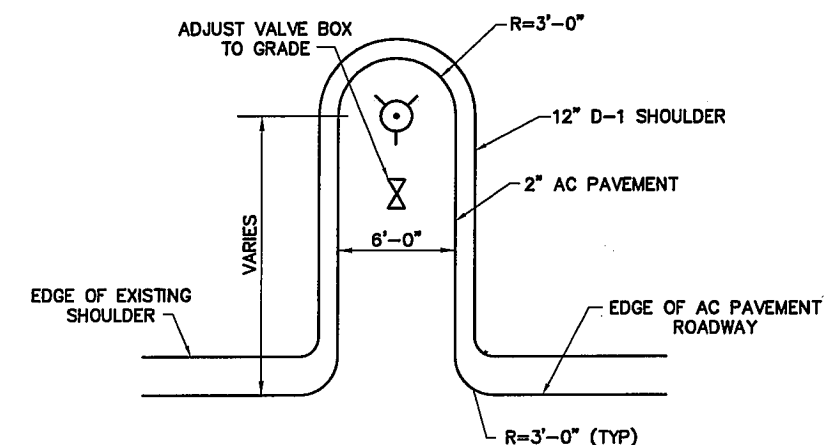
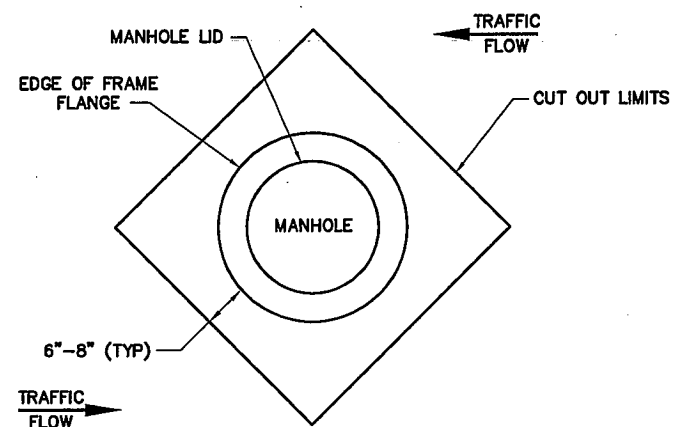
3 of 9



### CONCRETE TRANSITION SLAB DETAILS

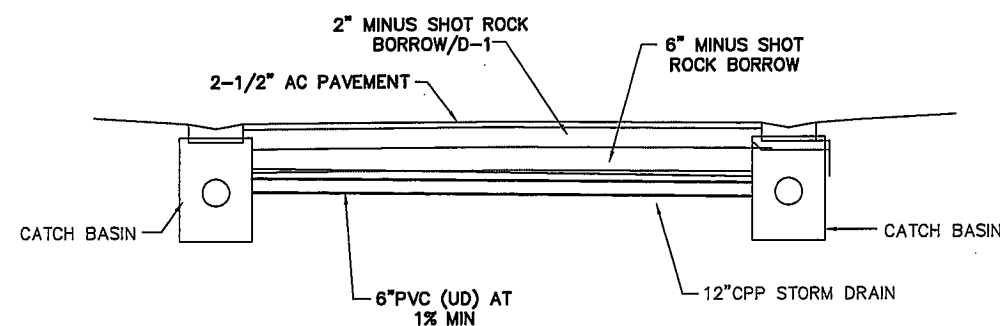
NTS

MANHOLE FRAME SHALL BE RAISED TO FINISH GRADE PRIOR TO PAVING OPERATIONS. IF NOT WITHIN ALLOWABLE TOLERANCES AFTER PAVING OPERATION THE ABOVE DETAILS SHALL BE USED.



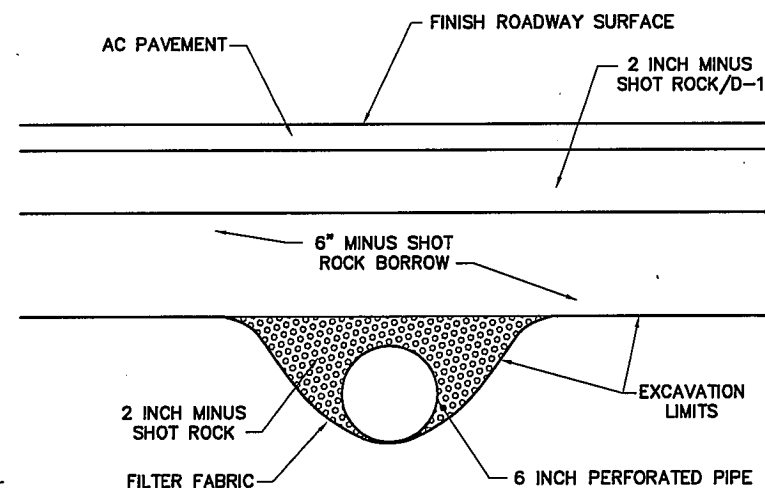
### FIRE HYDRANT ACCESS PAD

NTS

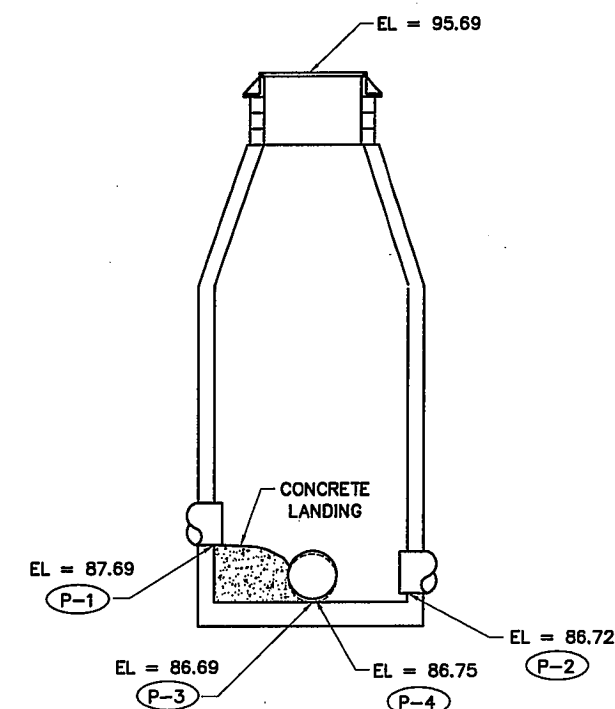


### 6 INCH CPP UNDERDRAIN

NTS



\*ADJUST DEPTH AS REQUIRED TO MAINTAIN 1% MINIMUM GRADIENT

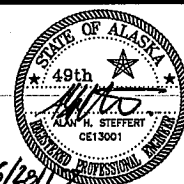


### MANHOLE 1

NTS

#### Revisions

Date	Description	Intls.



Prepared by:  
CITY AND BOROUGH OF JUNEAU  
★ ALASKA'S CAPITAL CITY  
ENGINEERING DEPARTMENT

## F STREET RECONSTRUCTION

CONTRACT NO. BE17-215

### DETAILS

DATE: 6/14/17

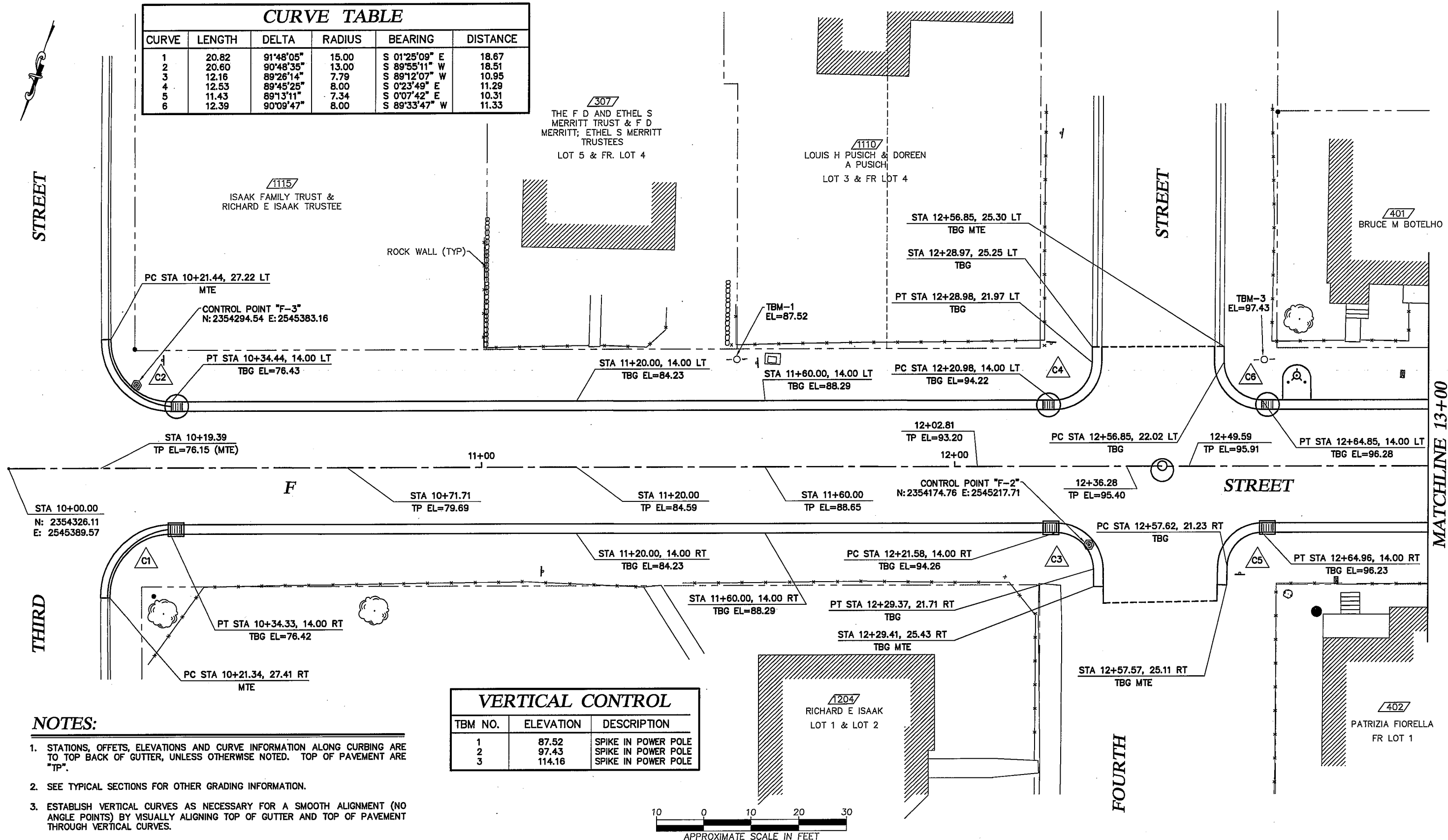
DRAWN BY: STAFF

SCALE: AS SHOWN

SHEET:

4 of 9

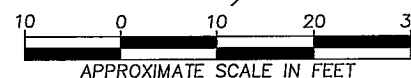
CURVE TABLE					
CURVE	LENGTH	DELTA	RADIUS	BEARING	DISTANCE
1	20.82	91°48'05"	15.00	S 01°25'09" E	18.67
2	20.60	90°48'35"	13.00	S 89°55'11" W	18.51
3	12.16	89°26'14"	7.79	S 89°12'07" W	10.95
4	12.53	89°45'25"	8.00	S 0°23'49" E	11.29
5	11.43	89°13'11"	7.34	S 0°07'42" E	10.31
6	12.39	90°09'47"	8.00	S 89°33'47" W	11.33



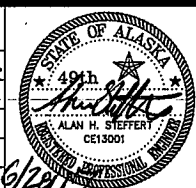
**NOTES:**

1. STATIONS, OFFSETS, ELEVATIONS AND CURVE INFORMATION ALONG CURBING ARE TO TOP BACK OF GUTTER, UNLESS OTHERWISE NOTED. TOP OF PAVEMENT ARE "TP".
2. SEE TYPICAL SECTIONS FOR OTHER GRADING INFORMATION.
3. ESTABLISH VERTICAL CURVES AS NECESSARY FOR A SMOOTH ALIGNMENT (NO ANGLE POINTS) BY VISUALLY ALIGNING TOP OF GUTTER AND TOP OF PAVEMENT THROUGH VERTICAL CURVES.

VERTICAL CONTROL		
TBM NO.	ELEVATION	DESCRIPTION
1	87.52	SPIKE IN POWER POLE
2	97.43	SPIKE IN POWER POLE
3	114.16	SPIKE IN POWER POLE



Revisions		
Date	Description	Intls.



Prepared by:  
CITY AND BOROUGH OF JUNEAU  
★ ALASKA'S CAPITAL CITY  
ENGINEERING DEPARTMENT

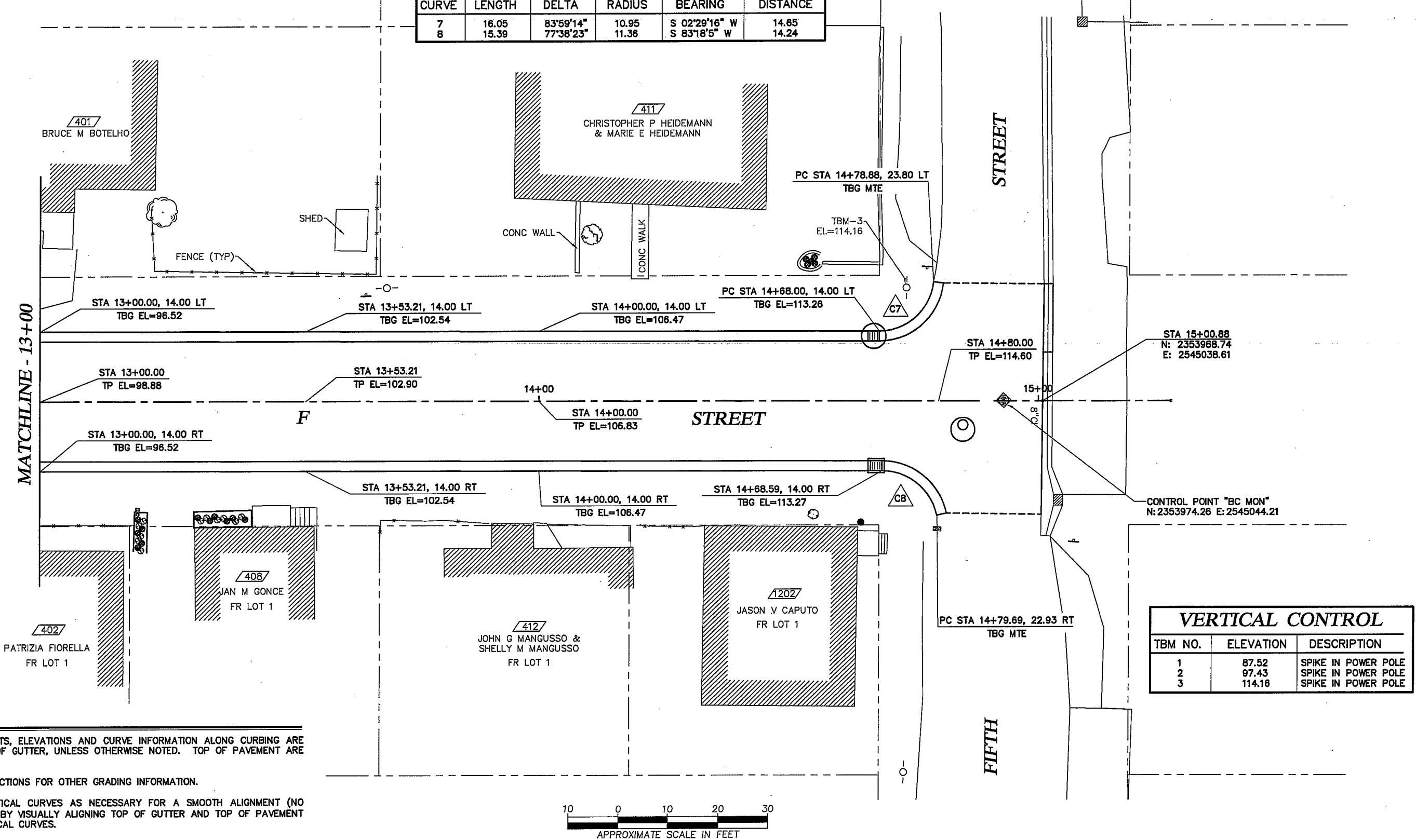
**F STREET RECONSTRUCTION**  
CONTRACT NO. BE17-215

**F STREET - HORIZONTAL AND VERTICAL CONTROL, CURB AND GUTTER LAYOUT AND GRADES**

DATE: 6/14/17      DRAWN BY: STAFF      SCALE: AS SHOWN

SHEET:  
5 of 9

CURVE TABLE					
CURVE	LENGTH	DELTA	RADIUS	BEARING	DISTANCE
7	16.05	83°59'14"	10.95	S 02°29'16" W	14.65
8	15.39	77°38'23"	11.36	S 83°18'5" W	14.24



NOTES:

- 1. STATIONS, OFFSETS, ELEVATIONS AND CURVE INFORMATION ALONG CURBING ARE TO TOP BACK OF GUTTER, UNLESS OTHERWISE NOTED. TOP OF PAVEMENT ARE "TP".
- 2. SEE TYPICAL SECTIONS FOR OTHER GRADING INFORMATION.
- 3. ESTABLISH VERTICAL CURVES AS NECESSARY FOR A SMOOTH ALIGNMENT (NO ANGLE POINTS) BY VISUALLY ALIGNING TOP OF GUTTER AND TOP OF PAVEMENT THROUGH VERTICAL CURVES.

VERTICAL CONTROL		
TBM NO.	ELEVATION	DESCRIPTION
1	87.52	SPIKE IN POWER POLE
2	97.43	SPIKE IN POWER POLE
3	114.16	SPIKE IN POWER POLE

Revisions		
Date	Description	Intls.



Prepared by:  
CITY AND BOROUGH OF JUNEAU  
★ ALASKA'S CAPITAL CITY  
ENGINEERING DEPARTMENT

# F STREET RECONSTRUCTION

## CONTRACT NO. BE17-215

# F STREET - HORIZONTAL AND VERTICAL CONTROL, CURB AND GUTTER LAYOUT AND GRADES

DATE: 6/14/17

DRAWN BY: STAFF

SCALE: AS SHOWN

THIRD STREET

FOURTH STREET

MATCHLINE 13+00

STORM DRAINAGE PIPE SUMMARY				
PIPE	DIA	LENGTH	TYPE	SLOPE
S-1	18"	33.0	CPP	0.059
S-2	12"	25.9	CPP	0.029
S-3	18"	184.2	CPP	0.097
S-4	12"	25.9	CPP	0.020
S-5	12"	17.4	CPP	0.056
S-6	18"	46.2	CPP	0.011
S-7	12"	25.9	CPP	0.020
S-8	12"	16.6	CPP	0.019
S-9	18"	200.8	CPP	0.082

CB-1 EXISTING TYPE I	
STA 10+03.05, 18.37 LT	
FG	EL = 75.91
S-1	EL = 70.97

CB-2 TYPE I	
STA 10+35.61, MATCH GUTTER	
FG	EL = 76.26
S-1	EL = 72.90
S-2	EL = 73.00
S-3	EL = 73.00
6"CPP	EL = 73.25
SUMP	16" MIN

CB-4 TYPE I	
STA 12+19.81, MATCH GUTTER	
FG	EL = 93.98
S-3	EL = 90.85
S-4	EL = 90.95
S-6	EL = 91.00
SUMP	16" MIN

CB-9 TYPE I	
STA 12+19.81, MATCH GUTTER	
FG	EL = 96.11
S-6	EL = 91.51
S-7	EL = 91.61
S-9	EL = 91.61
SUMP	16" MIN

MH-1	
STA 12+43.83, .83 RT	
FG	EL = 95.68
P-1	EL = 87.38
P-2	EL = 86.38
P-3	EL = 86.35
P-4	EL = 86.35

CB-3 TYPE III	
STA 10+35.50, MATCH GUTTER	
FG	EL = 76.25
S-2	EL = 73.75
6"PVC	EL = 74.00
SUMP	16" MIN

CB-5 TYPE III	
STA 12+20.39, MATCH GUTTER	
FG	EL = 93.98
S-4	EL = 91.47
S-5	EL = 91.57
SUMP	16" MIN

CB-6 EXISTING	
MATCH GUTTER	
FG	EL = 94.63
S-5	EL = 91.88

CB-7 EXISTING	
MATCH GUTTER	
FG	EL = 95.26
S-8	EL = 92.54

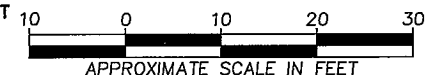
MH-1 TYPE I	
STA 12+43.83, 0.83 RT	
FG	EL = 95.69
P-1	EL = 87.69
P-2	EL = 86.72
P-3	EL = 86.69
P-4	EL = 86.75

SANITARY SEWER PIPE SUMMARY				
PIPE	DIA	LENGTH	TYPE	SLOPE
P-1	8"	206.6	PVC	MTE
P-2	8"	241.1	PVC	VARIES
P-3	8"	25.0	PVC	MTE
P-4	8"	24.3	PVC	MTE

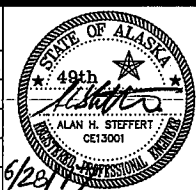
CB-8 TYPE III	
STA 12+66.12, MATCH GUTTER	
FG	EL = 96.06
S-7	EL = 92.13
S-8	EL = 92.23
6"PVC	EL = 92.50
6"PVC	EL = 92.50
SUMP	16" MIN

NOTES:

1. PROVIDE ALL ADAPTERS, ELBOWS AND OTHER FITTINGS NECESSARY TO CONNECT TO DISSIMILAR PIPE SIZES, MATERIALS AND DEPTHS. CONNECT TO EXISTING
2. PIPE LENGTHS ARE TO CENTER OF STRUCTURES, PIPE SLOPES ARE TO ENDS OF PIPES.
3. VERIFY SEWER SERVICE ELEVATIONS PRIOR TO INSTALLING SERVICE WYE ONTO NEW MAINLINE.
4. ABANDON OR REMOVE AND DISPOSE EXISTING PIPE/STRUCTURE AT CONTRACTORS OPTION.
5. ALL EXISTING STORM DRAINAGE PIPING AND STRUCTURES WITHIN THE PROJECT AREA SHALL BE REMOVED AND DISPOSED OF UNLESS NOTED ON THE PLANS FOR THE OPTION TO ABANDON IN PLACE.



Revisions		
Date	Description	Intls.



Prepared by:  
CITY AND BOROUGH OF JUNEAU  
ALASKA'S CAPITAL CITY  
ENGINEERING DEPARTMENT

**F STREET RECONSTRUCTION**  
CONTRACT NO. BE17-215

**PLAN - F STREET**  
B.O.P. TO STA 13+00

DATE: 6/14/17    DRAWN BY: STAFF    SCALE: AS SHOWN

SHEET:  
7 of 9

401  
BRUCE M BOTELHO

STORM DRAINAGE PIPE SUMMARY				
PIPE	DIA	LENGTH	TYPE	SLOPE
S-9	SEE SHEET 7			
S-10	12"	25.9	CPP	0.020
S-11	18"	40.9	CPP	0.020
S-12	18"	153.0	CPP	0.138

CB-10 TYPE I	
STA 14+66.83, MATCH GUTTER	
FG	EL = 113.10
S-9	EL = 107.95
S-10	EL = 110.00
S-11	EL = 108.05
SUMP	16" MIN

411  
CHRISTOPHER P HEIDEMANN  
& MARIE E HEIDEMANN

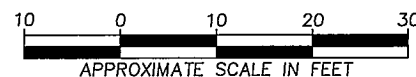
CB-12 TYPE II	
STA 15+07.70, 12.62 LT	
FG	EL = 114.57
S-11	EL = 108.87
S-12	EL = 108.97
12" CMP (N)	EL = 109.09
12" CMP (S)	EL = 109.08
8" CMP	EL = 109.09
SUMP	24" MIN

MATCHLINE 13+00

MATCHLINE 15+35

### NOTES:

1. PROVIDE ALL ADAPTERS, ELBOWS AND OTHER FITTINGS NECESSARY TO CONNECT TO DISSIMILAR PIPE SIZES, MATERIALS AND DEPTHS. CONNECT TO EXISTING
2. PIPE LENGTHS ARE TO CENTER OF STRUCTURES, PIPE SLOPES ARE TO ENDS OF PIPES.
3. VERIFY SEWER SERVICE ELEVATIONS PRIOR TO INSTALLING SERVICE WYE ONTO NEW MAINLINE.
4. ABANDON OR REMOVE AND DISPOSE EXISTING PIPE/STRUCTURE AT CONTRACTORS OPTION.
5. ALL EXISTING STORM DRAINAGE PIPING AND STRUCTURES WITHIN THE PROJECT AREA SHALL BE REMOVED AND DISPOSED OF UNLESS NOTED ON THE PLANS FOR THE OPTION TO ABANDON IN PLACE.



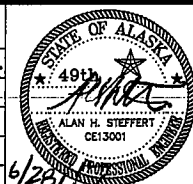
CB-11 TYPE III	
STA 14+67.43, MATCH GUTTER	
FG	EL = 113.10
S-10	EL = 110.60
SUMP	16" MIN

MH-2 TYPE I	
STA 14+84.86, 5.73 RT	
FG	EL = 114.60
P-2	EL = 109.30
P-5	EL = 109.50

SANITARY SEWER PIPE SUMMARY				
PIPE	DIA	LENGTH	TYPE	SLOPE
P-2	SEE SHEET 7			
P-5	8"	9.0	PVC	MTE

### Revisions

Date	Description	Intls.



Prepared by:  
CITY AND BOROUGH OF JUNEAU  
★ ALASKA'S CAPITAL CITY  
ENGINEERING DEPARTMENT

## F STREET RECONSTRUCTION

CONTRACT NO. BE17-215

## PLAN - F STREET

STA 13+00 TO STA 15+35

DATE: 6/14/17

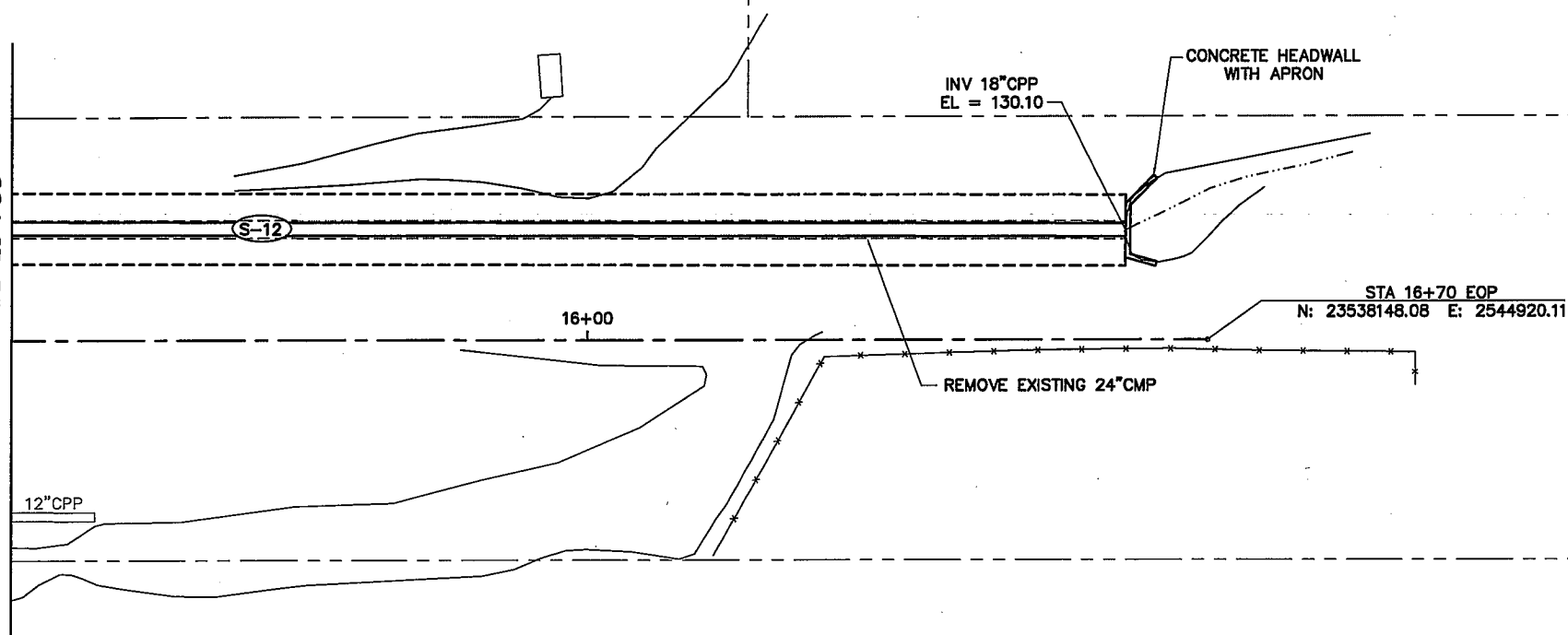
DRAWN BY: STAFF

SCALE: AS SHOWN

SHEET:  
8 of 9

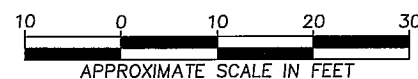


MATCHLINE 15+35



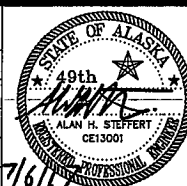
**NOTES:**

1. PROVIDE ALL ADAPTERS, ELBOWS AND OTHER FITTINGS NECESSARY TO CONNECT TO DISSIMILAR PIPE SIZES, MATERIALS AND DEPTHS. CONNECT TO EXISTING
2. PIPE LENGTHS ARE TO CENTER OF STRUCTURES, PIPE SLOPES ARE TO ENDS OF PIPES.



**Revisions**

Date	Description	Intls.



Prepared by:  
CITY AND BOROUGH OF JUNEAU  
★ ALASKA'S CAPITAL CITY  
ENGINEERING DEPARTMENT

**F STREET RECONSTRUCTION**  
CONTRACT NO. BE17-215

**PLAN - F STREET**  
**STA 15+35 TO EOP**

DATE: 6/14/17

DRAWN BY: STAFF

SCALE: AS SHOWN

SHEET:

9 of 9