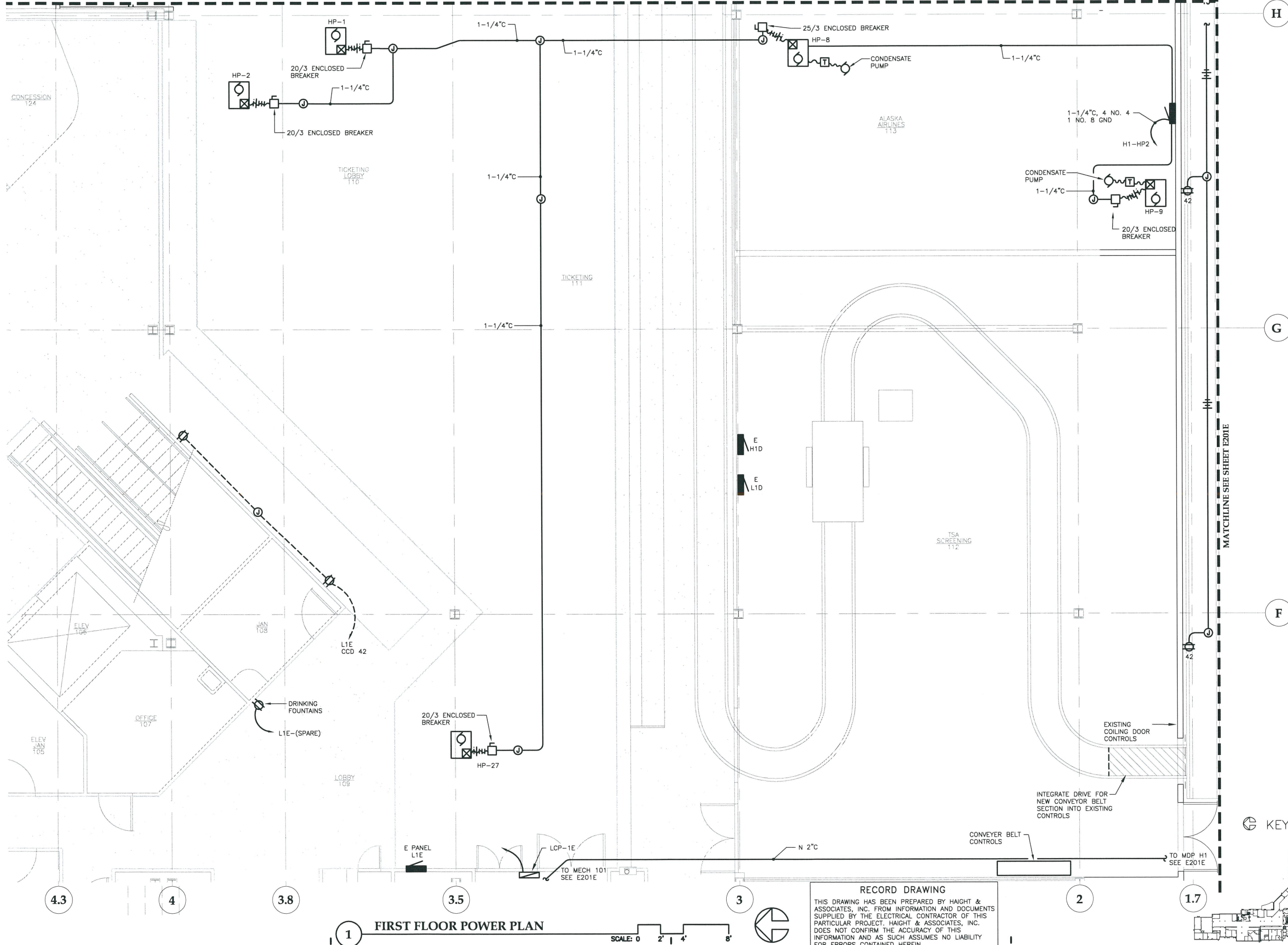


Sep 19, 2012 - 11:49am  
F:\Projects\100 Jensen Yorba Lott Inc\206 JJA Terminal Renovation\Drawings\Phase II\As-Built-September 2012\E201C.dwg (Layout) tab

MATCHLINE SEE SHEET E201B

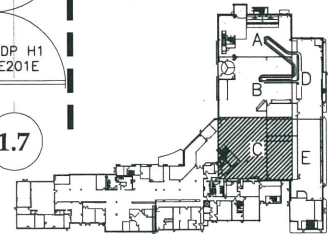


**FIRST FLOOR POWER PLAN**

SCALE: 0 2' 4' 8'

**RECORD DRAWING**  
THIS DRAWING HAS BEEN PREPARED BY HAIGHT & ASSOCIATES, INC. FROM INFORMATION AND DOCUMENTS SUPPLIED BY THE ELECTRICAL CONTRACTOR OF THIS PARTICULAR PROJECT. HAIGHT & ASSOCIATES, INC. DOES NOT CONFIRM THE ACCURACY OF THIS INFORMATION AND AS SUCH ASSUMES NO LIABILITY FOR ERRORS CONTAINED HEREIN.

KEY PLAN



**Jensen Yorba Lott Inc.**  
522 West 10th Street  
Juneau, Alaska 99801  
phone 907-586-1070  
fax 907-586-3959  
jensenyorbалott.com

**HAIGHT & ASSOCIATES**  
CONSULTING ELECTRICAL ENGINEERS  
526 Main Street  
Juneau, Alaska 99801  
(907) 586-9788  
Sep 19, 2012

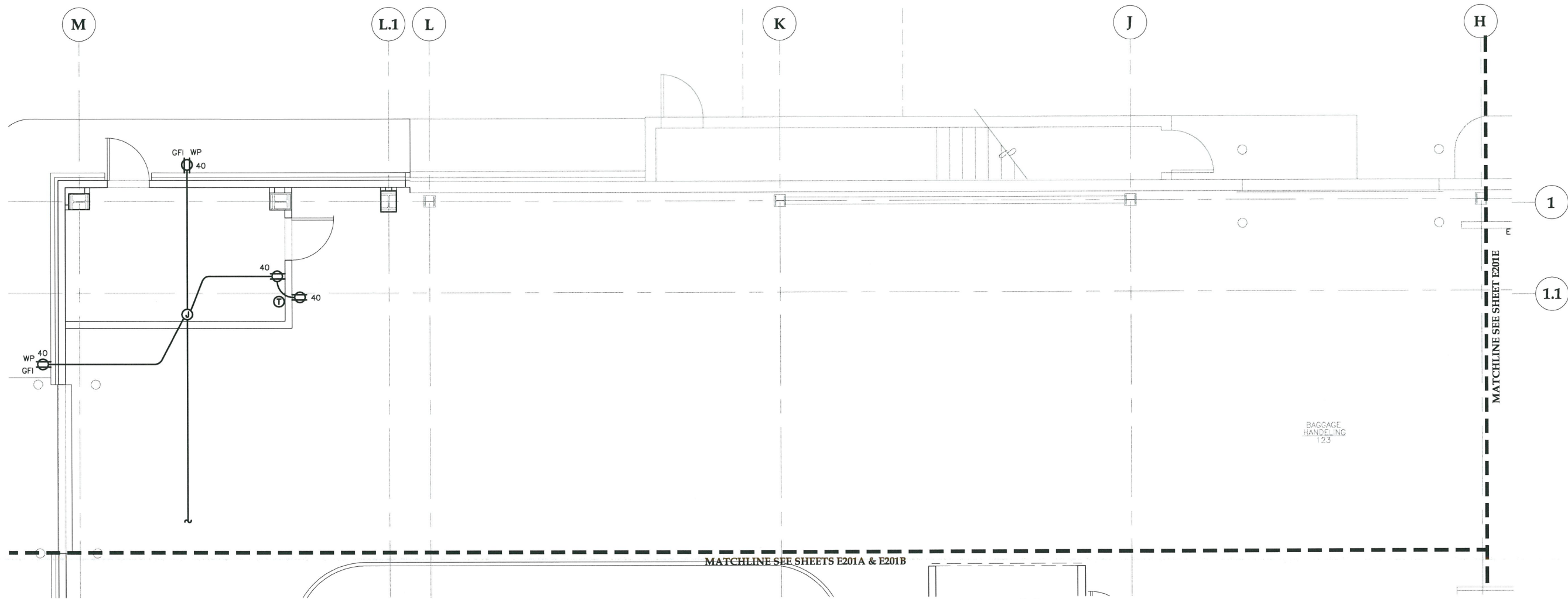


**City & Borough of Juneau International Airport Terminal Renovation**  
CBJ Contract No. E09-021  
Juneau, Alaska

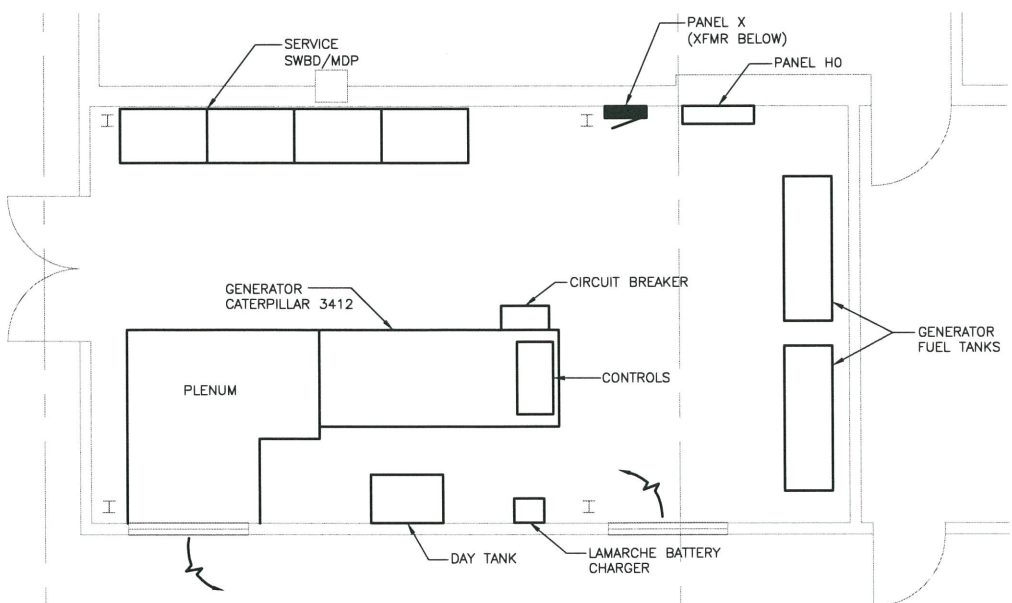
ASBUILT 2012
REVISIONS
△ February 02, 2009
△ CONFORMED
△ November 5, 2009
△
SHEET TITLE
<b>FIRST FLOOR POWER</b>
DATE: December 18, 2008
FILE: 0657

**E201C**

Sep 19, 2012 - 11:50am  
 F:\Projects\100 Jensen Yorba Lott, Inc\206 JJA Terminal Renovation\Drawings\Phase II\As-Built-September 2012\E201D.dwg (Layout1.tbx)



**1 FIRST FLOOR POWER PLAN**  
 SCALE: 0 2' 4' 8'

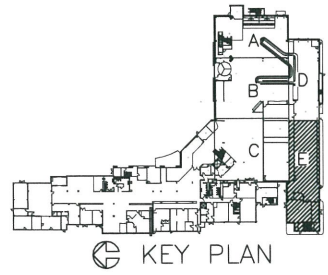


**2 ENLARGED PLAN - GENERATOR ROOM**  
 SCALE: 0 2' 4' 8'

MECHANICAL EQUIPMENT SCHEDULE - MECH 101 (SEE E201E)															
DESIGNATION			LOAD					CIRCUITING				CONTROL		REMARKS	
ITEM	DESCRIPTION	LOCATION	HP	KW	AMPS	VOLTS	PHASE	NO.	RATING	CONDUCTORS	DISCONNECT SWITCH	FUSE	STARTER SIZE		CONTROL
GSP-1	GROUND SOURCE PUMP	MECH 101	7 1/2	--	11	480	3	H1M-1,3,5	30/3	3 NO. 10, 1 NO. 12 G	--	--	1	H-O-A	VFD-MECH
GSP-2	GROUND SOURCE PUMP	MECH 101	7 1/2	--	11	480	3	H1M-2,4,6	30/3	3 NO. 10, 1 NO. 12 G	--	--	1	H-O-A	VFD-MECH
GLYCOL PUMP	GLYCOL PUMP	MECH 101	1/2	--	10	120	1	REF-41	20/1	2 NO. 12, 1 NO. 12 G	--	--	0	MANUAL	
CNTL	CONTROLS	MECH 101	--	--		120	1	REF-42	20/1	2 NO. 12, 1 NO. 12 G	--	--	--	--	

HD = HEAVY DUTY    GD = GENERAL DUTY    SW = SWITCH

**RECORD DRAWING**  
 THIS DRAWING HAS BEEN PREPARED BY HAIGHT & ASSOCIATES, INC. FROM INFORMATION AND DOCUMENTS SUPPLIED BY THE ELECTRICAL CONTRACTOR OF THIS PARTICULAR PROJECT. HAIGHT & ASSOCIATES, INC. DOES NOT CONFIRM THE ACCURACY OF THIS INFORMATION AND AS SUCH ASSUMES NO LIABILITY FOR ERRORS CONTAINED HEREIN.



**Jensen Yorba Lott Inc.**  
 522 West 10th Street  
 Juneau, Alaska 99801  
 phone 907-586-1070  
 fax 907-586-3959  
 jensenyorbaltott.com

JUNU AIRPORT  
 CITY/BOROUGH OF JUNEAU  
 ALASKA'S CAPITAL CITY

**HAIGHT & ASSOCIATES**  
 CONSULTING ELECTRICAL ENGINEERS  
 526 Main Street  
 Juneau, Alaska 99801  
 (907) 586-8788  
 Sep 19, 2012

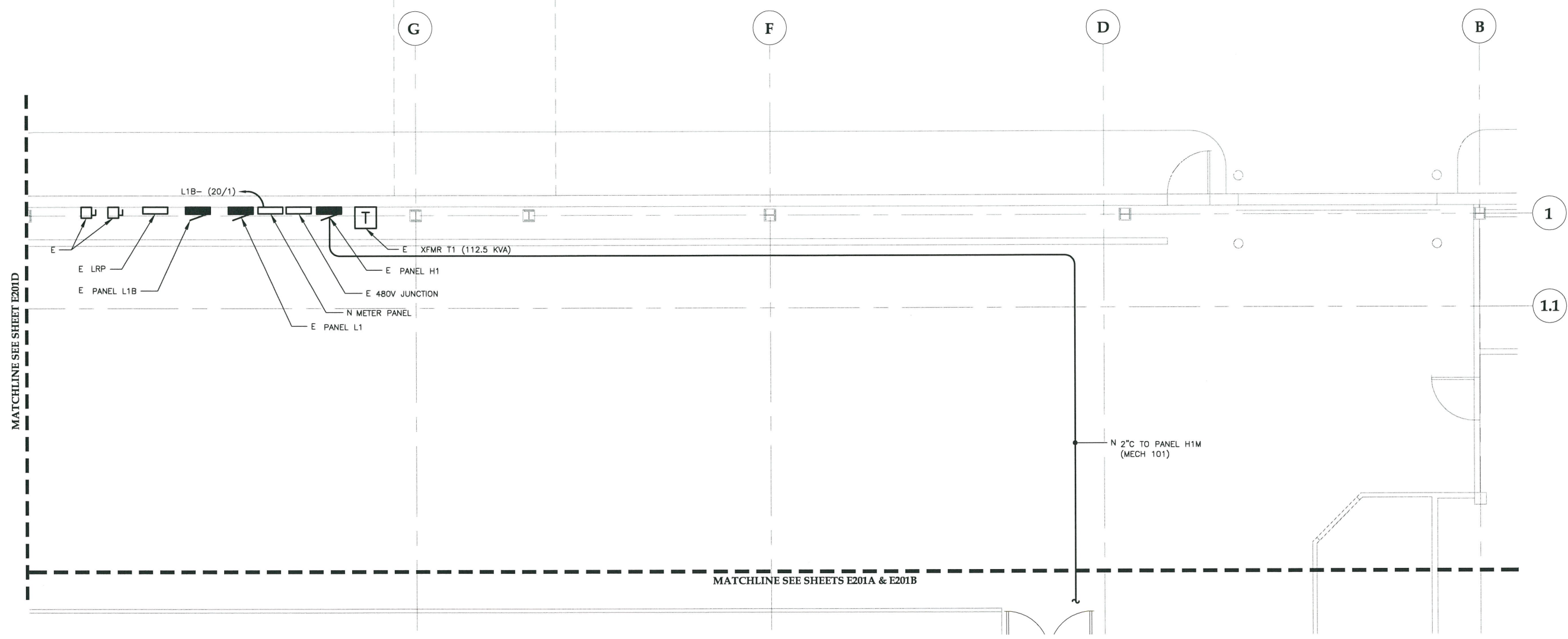


City & Borough of Juneau  
 Juneau International Airport  
 Terminal Renovation  
 CBJ Contract No. E09-021  
 Juneau, Alaska

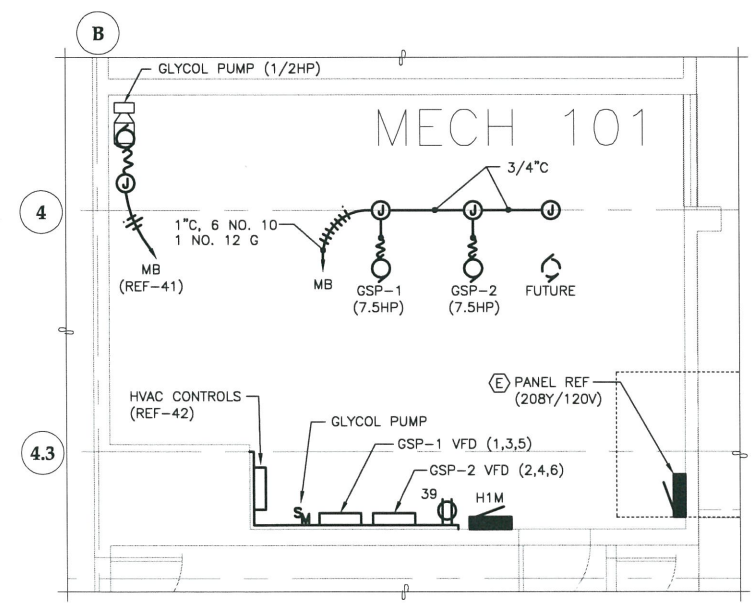
- ASBUILT 2012
- REVISIONS  
 ▲ February 02, 2009  
 ▲ CONFORMED  
 ▲  
 ▲
- SHEET TITLE  
**FIRST FLOOR POWER MECH 101 EQUIP SCHEDULE**  
 DATE: December 18, 2008  
 FILE: 0657

**E201D**

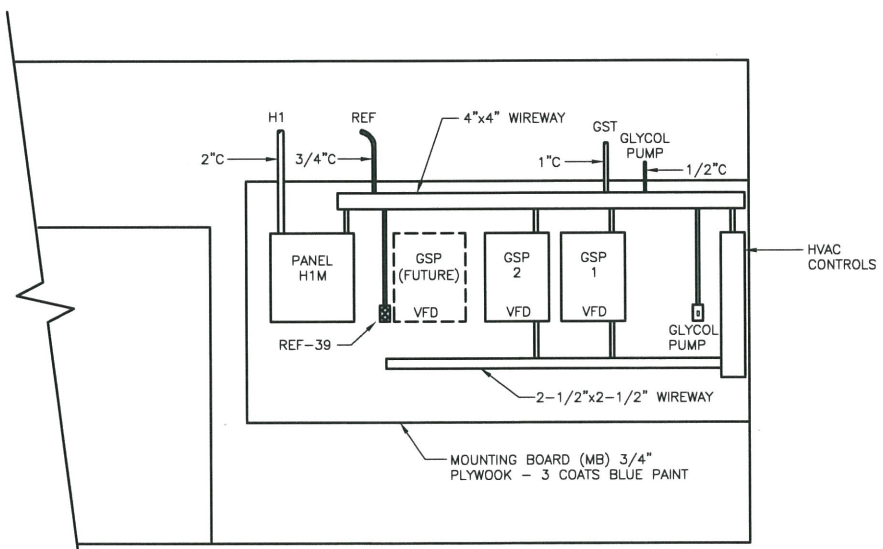
Sep 19, 2012 - 11:50am  
 F:\Projects\100\_Jensen Yorba Lott Inc\206 JJA Terminal Renovation\Drawings\Phase I\As-Built September 2012\E201E.dwg (Layout tab)



**1 FIRST FLOOR POWER PLAN**  
 SCALE: 0 2' 4' 8'

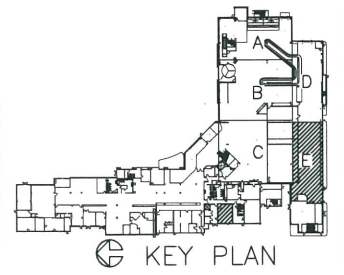


**2 ENLARGED PLAN - MECH 101**  
 SCALE: 0 2' 4' 8'



**3 ELEVATION - MECH 101 HVAC CONTROLS**  
 NO SCALE

**RECORD DRAWING**  
 THIS DRAWING HAS BEEN PREPARED BY HAIGHT & ASSOCIATES, INC. FROM INFORMATION AND DOCUMENTS SUPPLIED BY THE ELECTRICAL CONTRACTOR OF THIS PARTICULAR PROJECT. HAIGHT & ASSOCIATES, INC. DOES NOT CONFIRM THE ACCURACY OF THIS INFORMATION AND AS SUCH ASSUMES NO LIABILITY FOR ERRORS CONTAINED HEREIN.



**Jensen Yorba Lott Inc.**  
 522 West 10th Street  
 Juneau, Alaska 99801  
 phone 907-586-1070  
 fax 907-586-3959  
 jensenyorbalo.com

**HAIGHT & ASSOCIATES**  
 CONSULTING ELECTRICAL ENGINEERS  
 526 Main Street  
 Juneau, Alaska 99801  
 (907) 586-8788  
 Sep 19, 2012



**City & Borough of Juneau  
 Juneau International Airport  
 Terminal Renovation  
 CBJ Contract No. E09-021  
 Juneau, Alaska**

ASBUILT 2012
REVISIONS
▲ February 02, 2009
▲
▲
▲
SHEET TITLE
<b>FIRST FLOOR        POWER        MECH 101</b>
DATE: December 18, 2008
FILE: 0657

**E201E**