

Sep 19, 2012 - 11:38am  
 F:\Projects\100 Jensen Yorba Lott Inc\206 JJA Terminal Renovation\Drawings\Phase II\As-Built-September 2012\E001.dwg (Layout1 tab)

- FLAG NOTES:**
- 1 MATCH EXISTING CIRCUIT RATING AND SIZE.
  - 2 REMOVE CONDUCTORS.
  - 3 UTILIZE (2) SPARE CONDUITS FOR THE NEW FEEDER TO H3.
  - 4 EXISTING CONDUITS ARE NEAR THE NEW FOUNDATION. ADJUST TO AVOID CONFLICT WITH THE NEW FOUNDATION.
  - 5 PROVIDE A NEW HANDHOLE TO FACILITATE EXISTING LIGHTING CIRCUITS. EXISTING HANDHOLE IS IN FOOTPRINT OF THE NEW ADDITION.
  - 6 PROVIDE 2" DIA. HOLE IN BOTTOM FOR DRAINAGE.
  - 7 (2) EXISTING 4°C, AND (2) EXISTING 2°C CURRENTLY PASS THROUGH THE FOOTPRINT OF THE NEW ADDITION. REMOVE THE (2) 2°C AND CONTAINED TELEPHONE CABLES. REPLACE THE (2) 4°C AS SHOWN AND SPLICE INTO EXISTING 4°C ON EACH END.
  - 8 REMOVE EXISTING VAULT. REMOVE ABANDONED CONDUITS TO THE EDGE OF THE PROJECT SITE.

**LEGEND:** NOTE: ALL DEVICE HEIGHTS TO CENTER, UON.

**ABBREVIATIONS:**

AFF	ABOVE FINISHED FLOOR
AFG	ABOVE FINISHED GRADE
C.O.	CONDUIT ONLY
FACP	FIRE ALARM CONTROL PANEL
GFI	GROUND FAULT INTERRUPTED
RSC	RIGID STEEL CONDUIT
HR	HOME RUN
LV	LOW VOLTAGE
LCP	LIGHTING CONTROL PANEL
LRP	LIGHTING RELAY PANEL
MB	MOUNTING BOARD
OC	ON CENTER
PE	PHOTOELECTRIC
TB	TERMINAL BOARD
TVSS	TRANSIENT VOLTAGE SURGE SUPPRESSOR
UON	UNLESS OTHERWISE NOTED
WP	WEATHERPROOF
XFMR	TRANSFORMER
(E)	EXISTING
(N)	NEW
(R)	RELOCATE
(X)	REMOVE

**CONTROLS:**

S	SINGLE POLE SWITCH, 48" AFF
S <sub>0</sub>	SUBSCRIPT DENOTES LUMINAIRE SWITCHED, 48" AFF
S <sub>2</sub>	DOUBLE POLE SWITCH, 48" AFF
\$LV	LOW VOLTAGE SWITCH, 48" AFF
\$M	MANUAL STARTER
NS	NON SWITCHED
PE	PHOTOELECTRIC CELL
R	RELAY
◇ W	OCCUPANCY SENSOR: W-WALL, U-ULTRASONIC, D-DUAL TECH
◇ P	OCCUPANCY POWER PACK
◇	EQUIPMENT CONTROL STATION

**LIGHTING:**

	SURFACE OR SUSPENDED FLUORESCENT LUMINAIRE
	RECESSED FLUORESCENT LUMINAIRE
	SURFACE OR PENDANT MOUNTED LUMINAIRE (INCANDESCENT OR LED)
	RECESSED DOWNLIGHT LUMINAIRE
	RECESSED WALLWASH LUMINAIRE
	WALL MOUNTED LUMINAIRE (FLUORESCENT OR LED)
	CEILING MOUNTED EXIT LUMINAIRE
	WALL MOUNTED EXIT LUMINAIRE
	TRACK LIGHTING
	FLUORESCENT STRIP LUMINAIRE
	EXTERIOR SOFFIT MOUNTED LUMINAIRE
	EXTERIOR WALL MOUNTED LUMINAIRE
	EXTERIOR POLE MOUNTED LUMINAIRE

**POWER:**

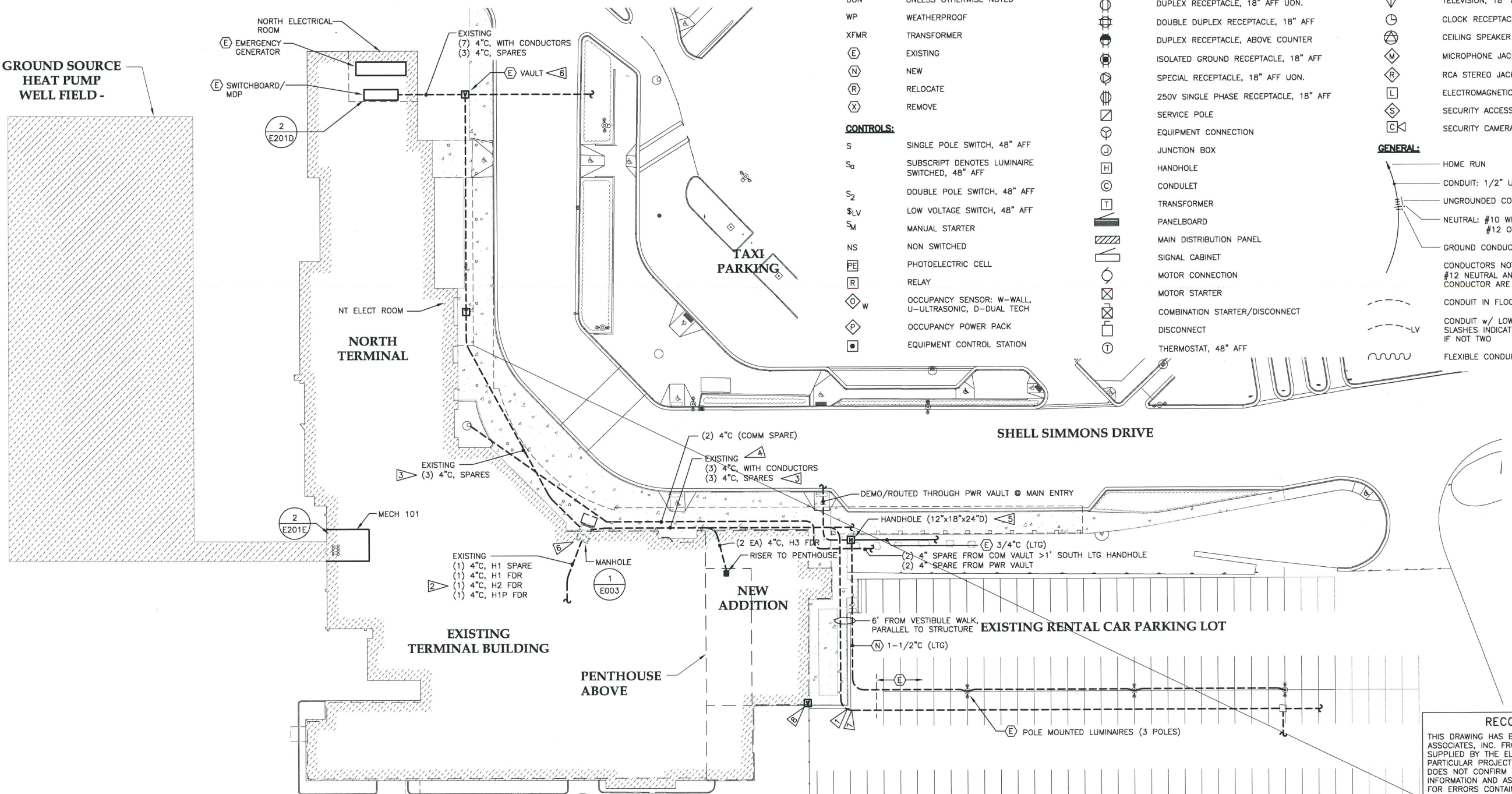
	DUPLEX RECEPTACLE, 18" AFF UON.
	DOUBLE DUPLEX RECEPTACLE, 18" AFF
	DUPLEX RECEPTACLE, ABOVE COUNTER
	ISOLATED GROUND RECEPTACLE, 18" AFF
	SPECIAL RECEPTACLE, 18" AFF UON.
	250V SINGLE PHASE RECEPTACLE, 18" AFF
	SERVICE POLE
	EQUIPMENT CONNECTION
	JUNCTION BOX
	HANDHOLE
	CONDUIT
	TRANSFORMER
	PANELBOARD
	SIGNAL CABINET
	MOTOR CONNECTION
	MOTOR STARTER
	COMBINATION STARTER/DISCONNECT
	DISCONNECT
	THERMOSTAT, 48" AFF

**LOW VOLTAGE:**

	SMOKE DETECTOR
	HEAT DETECTOR
	SMOKE DAMPER
	DUCT DETECTOR
	MANUAL PULL STATION, 48" AFF
	FIRE ALARM HORN/STROBE, 80" AFF TO BASE
	FIRE ALARM STROBE ONLY, 80" AFF TO BASE
	END-OF-LINE DEVICE
	SPRINKLER TAMPER SWITCH
	SPRINKLER PRESSURE SWITCH
	SPRINKLER FLOW SWITCH
	ADDRESSABLE DEVICE MODULE
	DATA & COMMS, 18" AFF UON., X = NO. OF CABLES & TERMINALS, C = MOUNTED IN CEILING, L = MOUNTED IN CEILING FOR LIGHTING DMX CIRCUIT
	TELEVISION, 18" AFF UON.
	CLOCK RECEPTACLE, 90" AFF
	CEILING SPEAKER
	MICROPHONE JACK, 18" AFF UON
	RCA STEREO JACK, 18" AFF UON
	ELECTROMAGNETIC DOOR LOCK
	SECURITY ACCESS SWITCH
	SECURITY CAMERA

**GENERAL:**

	HOME RUN
	CONDUIT: 1/2" UON.
	UNGROUND CONDUCTORS
	NEUTRAL: #10 WITH DOT #12 OTHERWISE
	GROUND CONDUCTOR
	CONDUCTORS NOT SHOWN WHERE ONLY #12 NEUTRAL AND UNGROUNDED CONDUCTOR ARE REQUIRED
	CONDUIT IN FLOOR, SLAB OR GROUND
	CONDUIT w/ LOW VOLTAGE CONDUCTORS, SLASHES INDICATE NO. OF CONDUCTORS IF NOT TWO
	FLEXIBLE CONDUIT OR MC CABLE



**RECORD DRAWING**  
 THIS DRAWING HAS BEEN PREPARED BY HAIGHT & ASSOCIATES, INC. FROM INFORMATION AND DOCUMENTS SUPPLIED BY THE ELECTRICAL CONTRACTOR OF THIS PARTICULAR PROJECT. HAIGHT & ASSOCIATES, INC. DOES NOT CONFIRM THE ACCURACY OF THIS INFORMATION AND AS SUCH ASSUMES NO LIABILITY FOR ERRORS CONTAINED HEREIN.

**Jensen Yorba Lott Inc.**  
 522 West 10th Street  
 Juneau, Alaska 99801  
 phone 907-586-1070  
 fax 907-586-3959  
 jensenyorbalo.com

**HAIGHT & ASSOCIATES**  
 CONSULTING ELECTRICAL ENGINEERS  
 526 Main Street  
 Juneau, Alaska 99801  
 (907) 586-8788

Sep 19, 2012

**City & Borough of Juneau International Airport Terminal Renovation**  
 CBJ Contract No. E09-021  
 Juneau, Alaska

ASBUILT 2012

REVISIONS

△	CONFORMED
△	
△	
△	

SHEET TITLE  
 LEGEND,  
 SITE PLAN

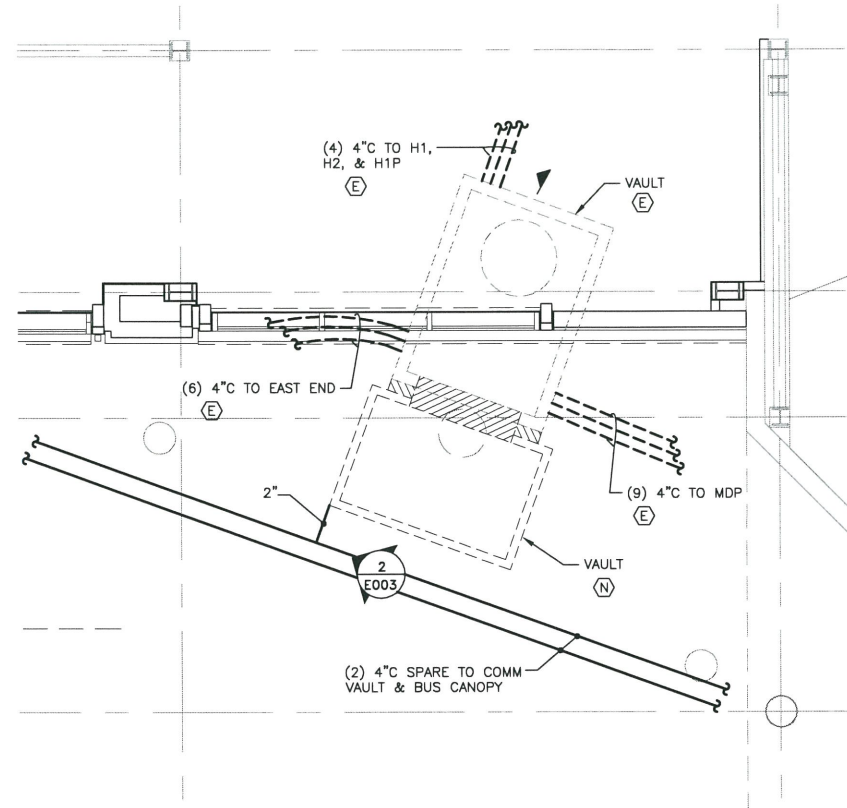
DATE: December 18, 2008  
 FILE: 0657

1 SITE PLAN

E001

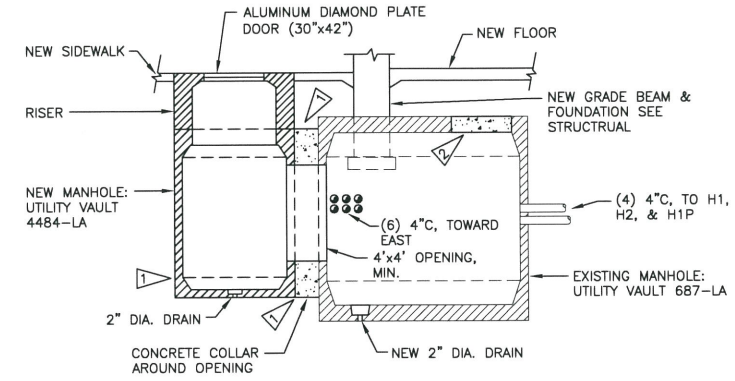


Sep 19, 2012 11:40am  
F:\Projects\100 Jensen Yorba Lot Inc\206 JIA Terminal Renovation\Drawings\Phase I\As-Built September 2012\E003.dwg (Layout tab)

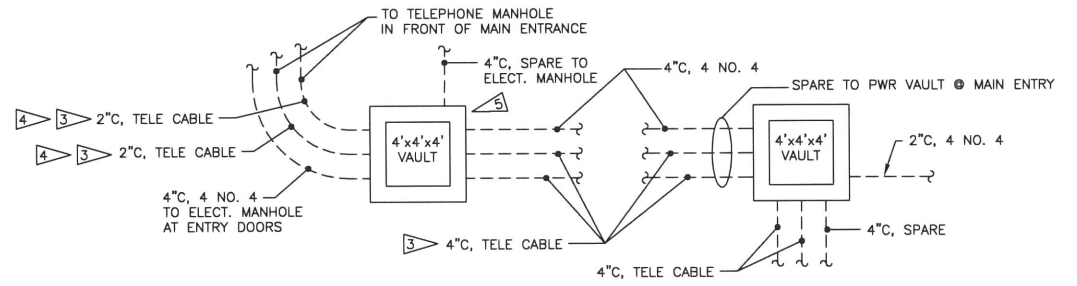


**1 PARTIAL PLAN - EXISTING AND NEW MANHOLES** SCALE: 0 2' 4' 8'

- FLAG NOTES:
- 1 APPLY CAULKING AT ALL SEAMS.
  - 2 REMOVE EXISTING RISER, AND MANHOLE COVER. PLUG OPENING IN THE TOP OF THE VAULT.
  - 3 REMOVE CABLES BACK TO TELEPHONE MANHOLE.
  - 4 REMOVE 2\"/>



**2 SECTION - EXISTING AND NEW MANHOLE** SCALE: 0 2' 4' 8'



**3 PARTIAL PLANS - RENTAL CAR PARKING VAULTS** SCALE: 0 2' 4' 8'

**RECORD DRAWING**

THIS DRAWING HAS BEEN PREPARED BY HAIGHT & ASSOCIATES, INC. FROM INFORMATION AND DOCUMENTS SUPPLIED BY THE ELECTRICAL CONTRACTOR OF THIS PARTICULAR PROJECT. HAIGHT & ASSOCIATES, INC. DOES NOT CONFIRM THE ACCURACY OF THIS INFORMATION AND AS SUCH ASSUMES NO LIABILITY FOR ERRORS CONTAINED HEREIN.

**Jensen Yorba Lott Inc.**

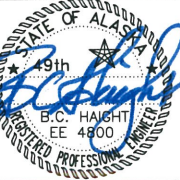
522 West 10th Street  
Juneau, Alaska 99801  
phone 907-586-1070  
fax 907-586-3959  
jensenyorbalo.com



**HAIGHT & ASSOCIATES**  
CONSULTING ELECTRICAL ENGINEERS

526 Main Street  
Juneau, Alaska 99801  
(907) 586-8788

Sep 19, 2012



City & Borough of Juneau  
Juneau International Airport  
Terminal Renovation  
CBJ Contract No. E09-021  
Juneau, Alaska

ASBUILT 2012

REVISIONS

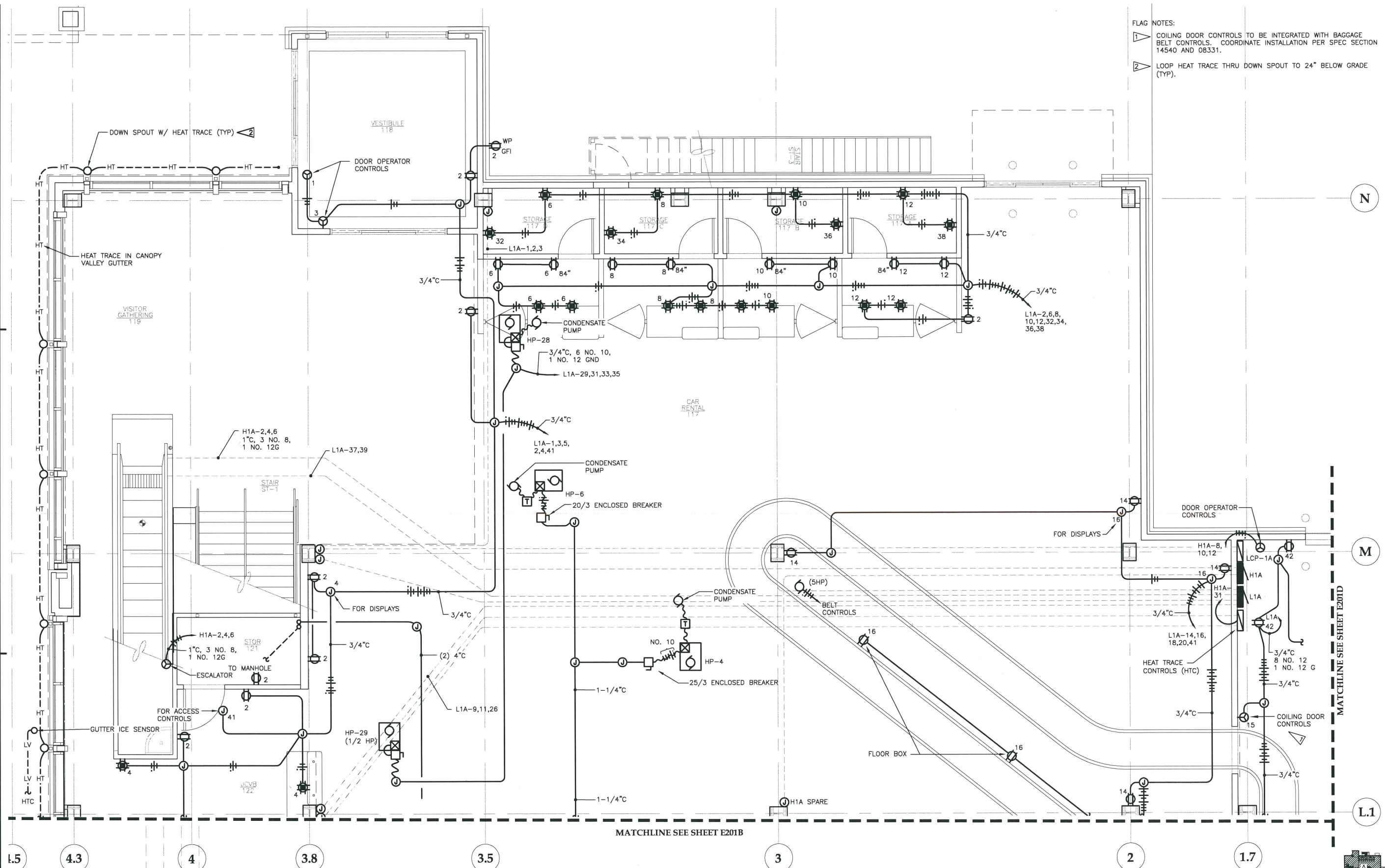
△	CONFORMED
△	
△	
△	

SHEET TITLE  
**PARTIAL PLANS  
MANHOLES AND  
VAULTS**

DATE: December 18, 2008  
FILE: 0657

**E003**

Oct 01, 2012 - 1:36pm  
 F:\Projects\100 Jensen Yorba Lott Inc\206 JJA Terminal Renovation\Drawings\Phase 1\As-Built October 2012\New Bound\201A.dwg (Layout tab)



FLAG NOTES:  
 1 COILING DOOR CONTROLS TO BE INTEGRATED WITH BAGGAGE BELT CONTROLS. COORDINATE INSTALLATION PER SPEC SECTION 14540 AND 08331.  
 2 LOOP HEAT TRACE THRU DOWN SPOUT TO 24" BELOW GRADE (TYP).

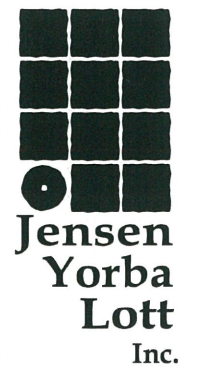
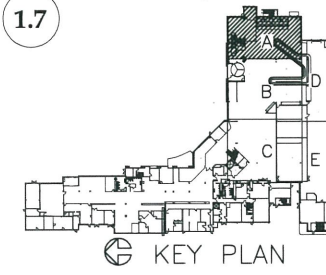
MATCHLINE SEE SHEET E201B

MATCHLINE SEE SHEET E201D

**1 FIRST FLOOR POWER PLAN**

SCALE: 0 2' 4' 8'

**RECORD DRAWING**  
 THIS DRAWING HAS BEEN PREPARED BY HAIGHT & ASSOCIATES, INC. FROM INFORMATION AND DOCUMENTS SUPPLIED BY THE ELECTRICAL CONTRACTOR OF THIS PARTICULAR PROJECT. HAIGHT & ASSOCIATES, INC. DOES NOT CONFIRM THE ACCURACY OF THIS INFORMATION AND AS SUCH ASSUMES NO LIABILITY FOR ERRORS CONTAINED HEREIN.



522 West 10th Street  
 Juneau, Alaska 99801  
 phone 907-586-1070  
 fax 907-586-3959  
 jensenyorbalo.com



528 Main Street  
 Juneau, Alaska 99801  
 (907) 586-8788

Sep 19, 2012



**City & Borough of Juneau  
 Juneau International Airport  
 Terminal Renovation  
 CBJ Contract No. E09-021  
 Juneau, Alaska**

ASBUILT 2012

REVISIONS
△ February 02, 2009
△ CONFORMED
△ November 05, 2009
△ December 21, 2009

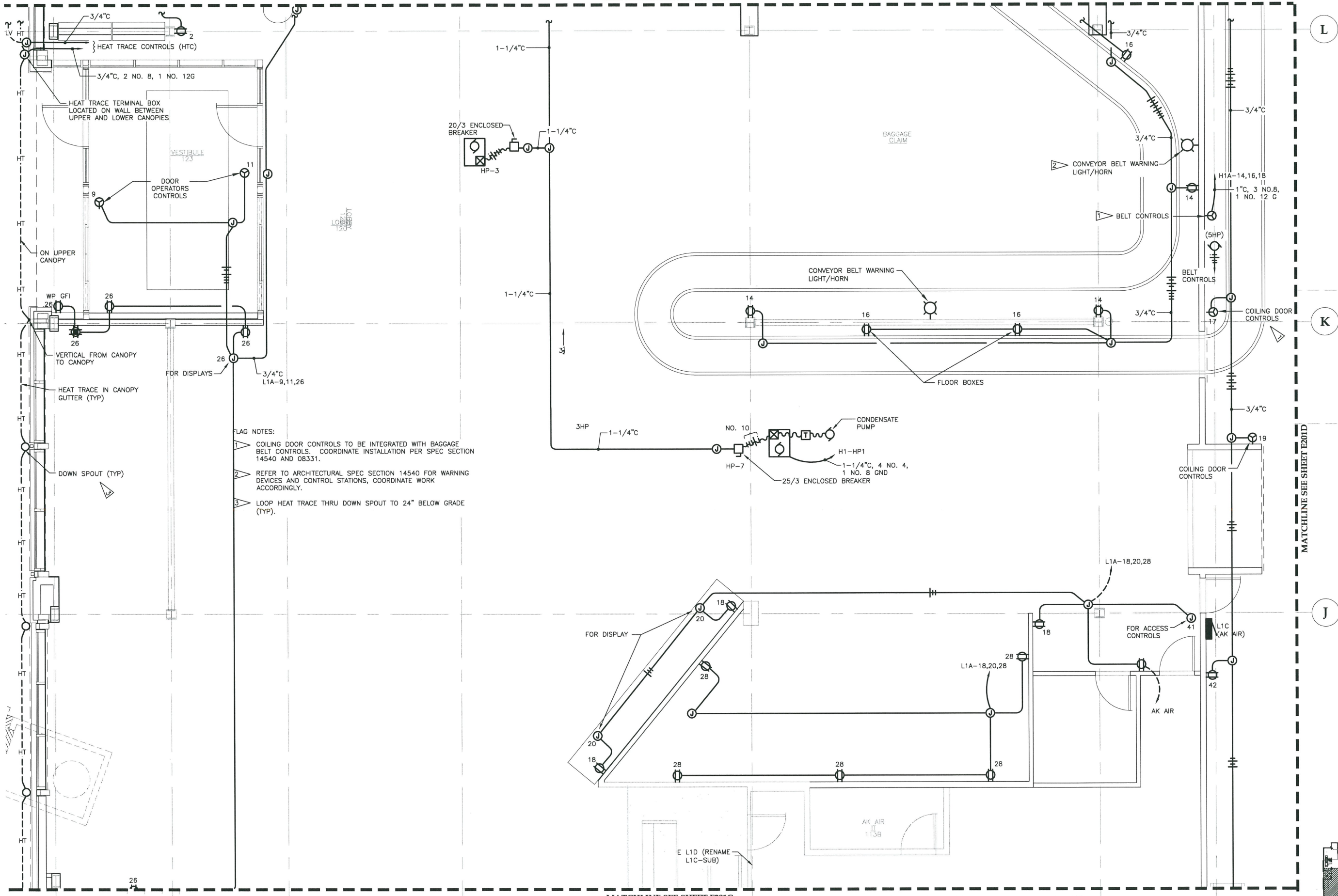
SHEET TITLE  
**FIRST FLOOR POWER**

DATE: December 18, 2008  
 FILE: 0657

**E201A**



MATCHLINE SEE SHEET E201A

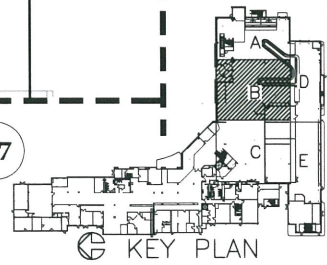


- FLAG NOTES:
- 1 COILING DOOR CONTROLS TO BE INTEGRATED WITH BAGGAGE BELT CONTROLS. COORDINATE INSTALLATION PER SPEC SECTION 14540 AND 08331.
  - 2 REFER TO ARCHITECTURAL SPEC SECTION 14540 FOR WARNING DEVICES AND CONTROL STATIONS, COORDINATE WORK ACCORDINGLY.
  - 3 LOOP HEAT TRACE THRU DOWN SPOUT TO 24" BELOW GRADE (TYP).

**RECORD DRAWING**

THIS DRAWING HAS BEEN PREPARED BY HAIGHT & ASSOCIATES, INC. FROM INFORMATION AND DOCUMENTS SUPPLIED BY THE ELECTRICAL CONTRACTOR OF THIS PARTICULAR PROJECT. HAIGHT & ASSOCIATES, INC. DOES NOT CONFIRM THE ACCURACY OF THIS INFORMATION AND AS SUCH ASSUMES NO LIABILITY FOR ERRORS CONTAINED HEREIN.

SCALE: 0 2' 4' 8'



Sep 19, 2012 - 11:49am  
 F:\Projects\100 Jensen Yorba Lott Inc\206 JJA Terminal Renovation\Drawings\Phase II\As-Built\September 2012\E201B.dwg (Layout1 tab)

**Jensen Yorba Lott Inc.**

522 West 10th Street  
 Juneau, Alaska 99801  
 phone 907-586-1070  
 fax 907-586-3959  
 jensenyorbalott.com



**HAIGHT & ASSOCIATES**  
 CONSULTING ELECTRICAL ENGINEERS

526 Main Street  
 Juneau, Alaska 99801  
 (907) 586-6788

Sep 19, 2012



**City & Borough of Juneau  
 Juneau International Airport  
 Terminal Renovation  
 CBJ Contract No. E09-021  
 Juneau, Alaska**

ASBUILT 2012

REVISIONS

▲	February 02, 2009
▲	CONFORMED
▲	November 5, 2009
▲	

SHEET TITLE  
**FIRST FLOOR POWER**

DATE: December 18, 2008  
 FILE: 0657

**E201B**