



ADDENDUM TO THE CONTRACT

for the

**Dimond Park Aquatic Center
Contract No. BE17-185**

ADDENDUM NO.: ONE

**CURRENT DEADLINE FOR BIDS:
March 16, 2017**

PREVIOUS ADDENDA: NONE

ISSUED BY: City and Borough of Juneau
ENGINEERING DEPARTMENT
155 South Seward Street
Juneau, Alaska 99801

DATE ADDENDUM ISSUED: March 28, 2017

The following items of the contract are modified as herein indicated. All other items remain the same. This addendum has been issued and is posted online. Please refer to the CBJ Engineering Contracts Division webpage at: <http://www.juneau.org/engineering ftp/contracts/Contracts.php>

DRAWINGS:

- Item No. 1 M002 MECHANICAL SPECIFICATIONS, ***Delete and replace with the attached*** M002 MECHANICAL SPECIFICATIONS, labeled Addendum No. 1, dated 2/2017. Specifications have been revised for epoxy coatings.
- Item No. 2 M500 MECHANICAL ENLARGED PLAN – AHU-1(E) ***Delete and replace with the attached*** M500 MECHANICAL ENLARGED PLAN – AHU-1(E) labeled Addendum No. 1, dated 2/2017. Sheet Note 6 has been revised.
- Item No. 3 M602 MECHANICAL DETAILS AND PHOTOS – AHU-1(E) ***Delete and replace with the attached*** M602 MECHANICAL DETAILS AND PHOTOS – AHU-1(E), labeled Addendum No. 1, dated 2/2017. Detail 1- Drain Pan Detail has been revised.

By: 

Greg Smith,
Contract Administrator

Total number of pages contained within this Addendum: 4

File: J:\JobData\20701.03_Cb1_Dimond_Aquatic_Center_Ahu-1_Upgrade\00_CADD\01_Working_Sat\06_Mechanical\20701.03_Mechanical_Specifications.dwg PLOT DATE: 2/28/2017 11:51 AM

GENERAL:

THE INFORMATION SHOWN ON THIS DRAWING IS TAKEN FROM AS-BUILT DRAWINGS AND A NON-DESTRUCTIVE WALK THROUGH OF THE FACILITY. THE CONTRACTOR SHALL FIELD VERIFY ALL ITEMS SCHEDULED FOR DEMOLITION PRIOR TO START OF WORK.

PLANS – THE CONTRACTOR SHALL PROVIDE ALL MATERIALS AND LABOR NECESSARY FOR A COMPLETE AND OPERABLE SYSTEM. THE DRAWINGS ARE PARTLY DIAGRAMMATIC, NOT NECESSARILY SHOWING ALL OFFSETS OR EXACT LOCATIONS OF PIPING AND DUCTS, UNLESS SPECIFICALLY DIMENSIONED.

PERMITS – OWNER SHALL SECURE AND PAY FOR GENERAL PERMIT. ALL OTHER PERMITS AND FEES SHALL BE THE RESPONSIBILITY OF THE CONTRACTOR TO OBTAIN.

CODE – ALL WORK SHALL BE DONE IN ACCORDANCE WITH THE LATEST ADOPTED EDITION OF THE INTERNATIONAL BUILDING CODE (IBC), INTERNATIONAL MECHANICAL (IMC), UNIFORM PLUMBING CODE (UPC) AND THE NATIONAL ELECTRICAL CODE (NEC) AS AMENDED BY THE STATE OF ALASKA AND THE CITY AND BOROUGH OF JUNEAU (CBJ). SHEET METAL WORK SHALL BE DONE IN ACCORDANCE WITH SMACNA STANDARDS.

INSURANCE – WORKER'S COMPENSATION INSURANCE, AND GENERAL LIABILITY INSURANCE AT ALL TIMES WHILE WORKING ON THIS PROJECT.

ELECTRICAL WORK – ALL ELECTRICAL WORK IS TO BE PERFORMED BY A LICENSED ELECTRICIAN. IN ACCORDANCE WITH THE NATIONAL ELECTRICAL CODE, NEC.

EQUIPMENT SUBSTITUTIONS – ALL EQUIPMENT LISTED IS REPRESENTATIVE OF THE STANDARD OF QUALITY AND PERFORMANCE REQUIRED, OR EQUAL SUBSTITUTIONS WILL BE CONSIDERED IF THE SUBSTITUTE CATALOG CUTS ARE SUBMITTED AND ARE SHOWN TO BE EQUAL OR BETTER QUALITY, INCLUDING EFFICIENCY OF PERFORMANCE, SIZE AND WEIGHT.

OPERATION AND MAINTENANCE MANUAL – PROVIDE THE OWNER WITH AN OPERATING AND MAINTENANCE MANUAL, TO INCLUDE WARRANTY DOCUMENTS OPERATION AND MAINTENANCE DATA FINAL AS-BUILT TUBING LAYOUT DRAWINGS CONTROL DRAWINGS AND OTHER INFORMATION AS REQUIRED BY DIVISION 01 SPECIFICATIONS.

WARRANTY – ALL WORK PERFORMED UNDER THIS CONTRACT TO BE FREE FROM DEFECTS IN MATERIALS AND WORKMANSHIP FOR A PERIOD OF ONE YEAR FROM ACCEPTANCE. ANY FAULTY MATERIALS OR WORKMANSHIP SHALL BE REPAIRED OR REPLACED TO THE SATISFACTION OF THE OWNER DURING THE GUARANTEE PERIOD.

MATERIALS – ALL MATERIALS OTHER THAN OWNER SUPPLIED SHALL BE NEW AND UNUSED, INSTALLED IN ACCORDANCE WITH THE MANUFACTURER'S DIRECTIONS AND IN THE BEST PRACTICE OF THE CRAFT. OBTAIN OWNER'S APPROVAL OF ALL PRODUCTS PRIOR TO ORDERING OR INSTALLING ANY PART OF ANY SYSTEM.

SUBMITTALS – ELECTRONIC SUBMITTALS ARE PREFERRED. BOOKLET IS ACCEPTABLE. THE DATA SHALL BE ARRANGED AND INDEXED IN THE SAME ORDER AS THE SCHEDULE SHEETS. IF BOOKLET FORM ARE SUBMITTED PROVIDE THREE (3) COPIES. PROVIDE SUBMITTALS AS ONE COMPLETE PACKAGE. INCOMPLETE SUBMITTALS WILL NOT BE REVIEWED. REQUIRED SUBMITTALS INCLUDE: DUCT SEALANT, DRAIN PAN CONSTRUCTION AND SHOP DRAWINGS, CONTROL DAMPER, THERMOSTAT, LOUVER, PIPE, AND FITTINGS.

ACCESS – PROVIDE WORKABLE ACCESS TO ALL SERVICEABLE AND/OR OPERABLE EQUIPMENT.

SCHEDULE: ALL WORK TO BE COORDINATED WITH OWNER. WORK TO BE SCHEDULED TO MINIMIZE DOWN TIME OF AIR HANDLER AHU-1(E) TO FULLEST EXTENT POSSIBLE. COORDINATE WORK TO BE DONE DURING ANNUAL SPRING MAINTENANCE SHUT DOWN OF UNIT. COORDINATE WITH OWNER FOR ACTUAL TIMES OF SPRING SHUT DOWN SCHEDULE PRIOR TO START OF WORK.

EQUIPMENT INSTALLATION – INSTALL ALL EQUIPMENT WHERE NOTED ON THE DRAWINGS IN ACCORDANCE WITH THE MANUFACTURER'S INSTRUCTIONS. PROVIDE MISCELLANEOUS APPURTENANCES, ACCESSORIES, SUPPORTS AND CONTROL CONNECTIONS REQUIRED FOR COMPLETE AND OPERATING SYSTEMS. MAINTAIN MANUFACTURER'S RECOMMENDED CLEARANCES.

TRAINING – INSTRUCT THE OWNER'S PERSONNEL IN THE OPERATION, CARE AND MAINTENANCE OF ALL SYSTEMS AND EQUIPMENT PROVIDED. PROVIDE A MINIMUM OF ONE (1) HOUR OF ON SITE INSTRUCTION TO THE OWNER DESIGNATED PERSONNEL.

SEISMIC RESTRAINT – ALL PIPING, AND EQUIPMENT INSTALLED UNDER THIS PROJECT SHALL BE SEISMICALLY RATED AND RESTRAINED FOR A SEISMIC EVENT IN ACCORDANCE WITH THE LATEST ADOPTED EDITION OF THE INTERNATIONAL BUILDING CODE AND ASCE 7. SEISMIC CATEGORY D, COMPONENT IMPORTANCE FACTOR 1.0.

PENETRATIONS OF FIRE BARRIERS – PENETRATIONS SHALL BE PROTECTED BY AN APPROVED FIRESTOP SYSTEM INSTALLED AND TESTED IN ACCORDANCE WITH ASTM E199 OR ASTM E814. SYSTEMS SHALL HAVE AN F RATING NOT LESS THAN THE REQUIRED FIRE-RESISTANCE RATING OF THE ASSEMBLY BEING PENETRATED.

INSTALL FIRESTOPPING IN ACCORDANCE WITH THE MANUFACTURERS RECOMMENDATIONS.

PIPE IDENTIFICATION – FACTORY FABRICATED PLASTIC PIPE MARKERS, FLEXIBLE, SEMI- RIGID PLASTIC, PREFORMED TO FIT AROUND PIPE OR PIPE COVERING; MINIMUM INFORMATION INDICATING FLOW DIRECTION ARROW AND FLUID BEING CONVEYED, CONFORMING WITH ASME A13.1.

AT ALL TIMES DURING THE COURSE OF THE WORK, THE CONTRACTOR SHALL KEEP THE SITE CLEAN AND FREE OF UNNECESSARY MATERIALS AND DEBRIS. THE CONTRACTOR SHALL, AT THE DIRECTION OF THE OWNER, CLEAR ANY DESIGNATED AREAS OR AREA OF MATERIALS AND DEBRIS. AFTER COMPLETION OF ANY PORTION OF THE WORK, THE CONTRACTOR SHALL REMOVE FROM THE SITE ALL TOOLS AND MACHINERY AND ALL DEBRIS OCCASIONED BY THE WORK, LEAVING THE SITE FREE OF ALL OBSTRUCTIONS AND HINDRANCES.

TESTING – ALL SYSTEMS TO BE TESTED TO THE OWNERS SATISFACTION. MAKE SYSTEM ADJUSTMENTS AS NECESSARY TO ENSURE SYSTEM ARE FULLY OPERATIONAL.

INSULATION

INSULATION – RIGID FIBER BOARD – ASTM C612 TYPE IB, 'K' VALUE OF 0.23 AT 75°F, 3.0 LB./CU. FT. DENSITY. 0.00035 INCH FOIL SCRIM FACING. MINIMUM THERMAL RESISTANCE SHALL BE R=4.3. CERTAINTED CERTAPRO CB 300 OR EQUAL.

DUCTWORK AND ACCESSORIES

LOW AND MEDIUM PRESSURE DUCTWORK – FABRICATE AND SUPPORT IN ACCORDANCE WITH SMACNA HVAC DUCT CONSTRUCTION STANDARDS AND ASHRAE HANDBOOKS, EXCEPT AS INDICATED.

DUCTWORK – PROVIDE GALVANIZED SHEET METAL RECTANGULAR WHERE CALLED OUT ON THE PLANS. SEAL ALL DUCT SEAMS AND JOINTS AIRTIGHT. ALL SHEET METAL WORK TO BE CONSTRUCTED, INSTALLED, TESTED AND BALANCED IN ACCORDANCE WITH SMACNA STANDARDS. SUPPORT LOW AND MEDIUM PRESSURE DUCTWORK PER SMACNA GUIDELINES.

HIGH PRESSURE DUCT SEALANT: SEALANT TO CREATE A PERMANENT FLEXIBLE SEAL SUITABLE FOR USE IN LOW, MEDIUM, AND MEDIUM PRESSURE APPLICATIONS. DUCT SEALANT TO BE HYBRID POLYURETHANE, NSF R2 LISTED, WATER AND SALT SPRAY RESISTANT, UV RESISTANT, NON TOXIC, LOW VOC CONTENT. 24 HOUR CURE TIME. 3M ADHESIVE SEALANT 740UV.

ALL COMPARTMENTS IN AIR HANDLING UNIT, AHU-1(E), CLEANED OF SCALE BUILDUP AND CORROSION.

PRIOR TO TO APPLICATION OF SEALANT, AHU-1(E) COMPARTMENTS TO BE CLEAN, DRY, AND FREE OF DIRT, DEBRIS, AND CORROSION.

CONTRACTOR TO DOCUMENT AND VERIFY ALL MANUFACTURER REQUIRED CURING TIMES AND APPLICATION TEMPERATURES ARE MAINTAINED.

VOLUME DAMPER – FABRICATE IN ACCORDANCE WITH SMACNA HVAC DUCT CONSTRUCTION STANDARDS. INSTALL VOLUME DAMPERS WHERE SHOWN ON THE DRAWINGS.

DUCT ACCESS DOORS – FABRICATE DUCT ACCESS DOORS IN ACCORDANCE WITH SMACNA HVAC DUCT CONSTRUCTION STANDARDS.

SPIRAL ROUND DUCT – DIAMETERS LESS THAN 6" SHALL BE 24 GAUGE GALVANIZED STEEL DUCT. DIAMETERS 6" AND LARGER SHALL BE 22 GAUGE GALVANIZED STEEL DUCT. ALL FITTINGS TO BE PROVIDED WITH SMOOTH OBSTRUCTION FREE INTERIOR, FABRICATED A MINIMUM OF 2 GAUGES HEAVIER THEN DUCT GAUGES AND BE PROVIDED WITH ALL SEAMS WELDED SOLID. ALL JOINTS ARE TO BE SEALED AIRTIGHT.

CONTROL DAMPERS – OUTSIDE AIR DUCT: FABRICATE IN ACCORDANCE WITH SMACNA HVAC DUCT CONSTRUCTION STANDARDS. GALVANIZED STEEL 16 GAUGE FRAME. GALVANIZED STEEL 14 GAUGE BLADE. CLOSED CELL NEOPRENE FOAM DAMPER SEAL SHALL PERFORM TO CLASS 1A LEAKAGE STANDARDS AT 1" W.G. RUSKIN CD60 OR EQUAL. PROVIDE WITH BELIMO ACTUATOR, 120V, 60HZ, SPRING RETURN ACTUATOR SET TO FAIL OPEN, DIRECT COUPLED. BELIMO AFBUP OR EQUAL.

INSTALL DAMPERS IN ACCORDANCE WITH MANUFACTURER'S INSTRUCTIONS. PROVIDE CONTROL DAMPERS AT LOCATIONS INDICATED.

FILTER RACK – FABRICATE IN ACCORDANCE WITH SMACNA HVAC DUCT CONSTRUCTION STANDARDS. HINGED DOOR, ACCOMMODATES STANDARD FILTERS, SIZE 12X12X1.

FILTER CARTRIDGE – CARDBOARD FRAME, STANDARD PLEAT STYLE, COTTON-POLYESTER MEDIA, 14 PLEATS PER FOOT, MERV 8 EFFICIENCY. FILTER SIZE 12X12X1. FILTRETTE 300 MERV 8 DUST REDUCTION 12X12X1 MANUFACTURED BY 3M OR EQUAL.

PIPING

DRAIN PIPING, ABOVE GRADE – STAINLESS STEEL PIPE: ASTM A312, SCHEDULE 40. FITTINGS: ASTM A312. JOINTS: THREADED OR AWS D1.1 WELDED.

REAM PIPE AND TUBE ALL CUT ENDS AND THOROUGHLY CLEAN PIPE ENDS AND FITTINGS FOR SOLDERING. REMOVE ALL BURRS, KEEP OPEN ENDS OF PIPE FREE FROM SCALE AND DIRT. PROTECT WITH TEMPORARY CAPS OR PLUGS.

PIPING SUPPORTS AND HANGERS – SIZED AND SPACED IN ACCORDANCE WITH THE UPC AND NFPA 31. INSTALLED AS PER THE MANUFACTURERS INSTRUCTIONS.

UNIONS, AND FLANGES – DIELECTRIC CONNECTIONS: UNION WITH GALVANIZED OR PLATED STEEL THREADED END, COPPER SOLDER END, WATER IMPERVIOUS ISOLATION BARRIER.

FLANGES – CLASS 150, SLIP-ON STAINLESS STEEL FLANGES.

VALVES

SWING CHECK VALVES – UP TO 2 INCHES: CLASS 150, STAINLESS STEEL DISC, SWING TYPE, FLANGED ENDS.

PLUMBING SPECIALTIES

DRAIN PAN: DRAIN PAN TO BE FABRICATED TO FIT OVER EXISTING FLOOR WITH 3" DEPTH MINIMUM. DRAIN PAN TO BE EPOXY COATED TYPE 316 STAINLESS STEEL, MINIMUM 18 GAUGE. PAN TO BE WELDED WATER TIGHT WITH CONTINUOUS 0.05" FILLET WELD AT LAP SEAM. ALL WELDS TO BE GROUND SMOOTH. DRAIN TO SLOPE 1/8" PER FOOT TO DRAIN CONNECTION TO PREVENT ACCUMULATION OF STANDING WATER. DRAIN PAN TO BE INSULATED.

CONTRACTOR TO CONFIRM ALL DIMENSIONS PRIOR TO FABRICATION OF DRAIN PANS.

EPOXY COATING: MAXIMUM OPERATING TEMPERATURE OF 300°F. 5000 HOURS CORROSION RESISTANCE. 24 HOUR CURING TIME. 3M SCOTCHKOTE EPOXY HT LINING HTX 517 OR APPROVED EQUAL.

ALL LEAKAGE POINTS BETWEEN COMPARTMENTS TO BE SEALED WITH EPOXY SEALANT PRIOR TO INSTALLATION. COAT ALL EXPOSED COMPARTMENT WALLS AND DRAIN PAN TO FULLEST EXTENT POSSIBLE.

ALL EDGES OF DRAIN PAN TO BE SEALED WATERTIGHT TO PREVENT LEAKAGE AND CONDENSATION BENEATH PAN. AHU-1(E) TO BE SHUT DOWN DURING INSTALLATION ALL COMPARTMENTS SURFACES TO BE CLEAN, DRY, AND FREE OF ALL DIRT AND CORROSION PRIOR TO INSTALLATION OF DRAIN PANS. CONTRACTOR TO DOCUMENT AND VERIFY PROPER CURING TIMES AND APPLICATION TEMPERATURES ARE MAINTAINED IN ACCORDANCE WITH MANUFACTURER'S REQUIREMENTS.

PUMPS

IN-LINE CIRCULATORS – MAINTENANCE FREE, SELF-LUBRICATED, 3 SPEED, INDUSTRIAL/COMMERCIAL SINGLE STAGE DIRECT DRIVE CIRCULATOR. STAINLESS STEEL PUMP HOUSING, TYPE 304 STAINLESS STEEL IMPELLER, UPPER AND LOWER RADIAL BEARING TO BE OXIDE CERAMIC TUNGSTEN CARBIDE SHAFT BEARING SURFACES STAINLESS STEEL WITH 430F SHAFT.

DDC CONTROLS

MODIFICATIONS TO THE EXISTING DDC SYSTEM IN THE FACILITY SHALL BE PROVIDED BY THE LOCAL OFFICES OR SIEMENS BUILDING TECHNOLOGIES IN ACCORDANCE WITH CITY AND BOROUGH OF JUNEAU DESIGN STANDARDS. NO SUBSTITUTIONS ARE ALLOWED. CONTACT SIEMENS DIRECTLY AT (907) 563-2242.

INSTRUMENTATION

THERMOSTAT – WALL MOUNTED LINE VOLTAGE THERMOSTAT. SPST SWITCH ACTION TO CLOSE ON RISE. CONTROL RANGE: 30°F TO 110°F. 120 VAC 16.0 FLA. UL OR CSA LISTED. HONEYWELL MODEL T4054A OR APPROVED EQUAL.

DOOR BOTTOM SWEEP AND THRESHOLD

FACE MOUNTED DOOR BOTTOM SWEEP WITH NYLON BRUSH. PEMKO MODEL 18137_NB OR APPROVED EQUAL.

STAINLESS STEEL SADDLE TYPE THRESHOLD. PEMKO MODEL 175SS OR APPROVED EQUAL.

SEQUENCE OF OPERATIONS

WHIRLPOOL MECHANICAL INTAKE DAMPER: CONTROL DAMPER TO BE NORMALLY CLOSED. WHEN TEMPERATURE IN SPACE EXCEEDS SETPOINT, 75°F (ADJUSTABLE), INTAKE CONTROL DAMPER TO OPEN TO SATISFY COOLING. PROVIDE A 5F DEAD BAND. WHEN COOLING IS SATISFIED, CONTROL DAMPER TO CLOSE.

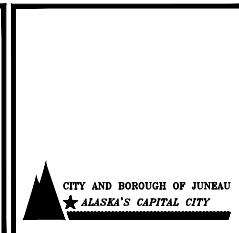
DRAIN PUMPS (CP-A, CP-B, CP-C) : DRAIN PUMP IS TO BE ENABLED WHEN HIGH WATER LEVEL IS DETECTED BY THE HIGH WATER LEVEL PROBE. DRAIN PUMP IS TO BE DISABLED WHEN LOW WATER LEVEL IS DETECTED BY THE LOW WATER LEVEL PROBE.

ADDENDUM 1



REVISION			
REV	DATE	DESCRIPTION	BY
0	02/2017	ISSUED FOR CONSTRUCTION	TLM
1	02/2017	REVIEW COMMENT CHANGES	TLM
2	02/2017	ADDENDUM NO 1	TLM

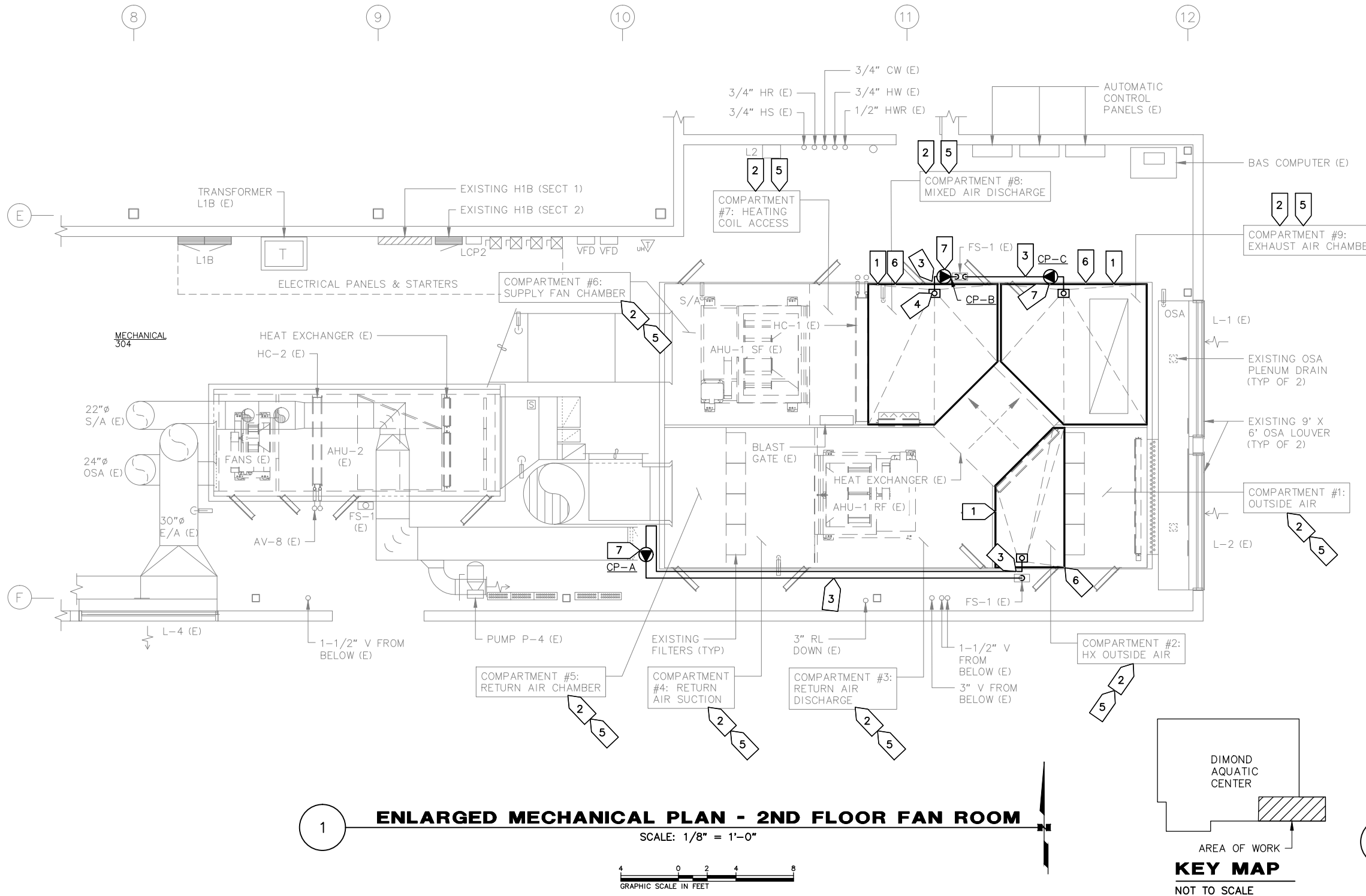
REVISION			
REV	DATE	DESCRIPTION	BY



SCALE	HOR. N/A VER. N/A
DESIGNED BY	TLM
DRAWN BY	WTP
CHECKED BY	TLM
APPROVED BY	TLM

PROJECT NO: 20701.03	DIMOND PARK AQUATIC CENTER WHIRLPOOL HVAC AND AHU-1 UPGRADES	PROJECT NO. 20701.03
MECHANICAL SPECIFICATIONS		CITY GRID
CITY AND BOROUGH OF JUNEAU, AK		WATER GRID
STATUS: ISSUED FOR CONSTRUCTION		SEWER GRID
DATE: 02/2017		SHEET MO02 OF 12

File: J:_JobData\20701.03 Cb\Dimond Aquatic Center Ahu-1 Upgrades\00 CADD\01 Working Set\06 Mechanical\20701.03_Mechanical Enlarged Plan - Air Handling.dwg PLOT DATE: 2/28/2017 11:49 AM

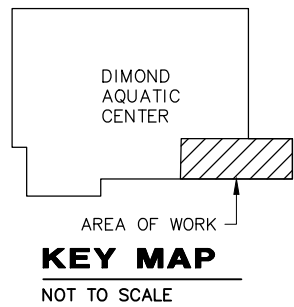


1 ENLARGED MECHANICAL PLAN - 2ND FLOOR FAN ROOM
 SCALE: 1/8" = 1'-0"
 GRAPHIC SCALE IN FEET

- GENERAL NOTES:**
- MECHANICAL DRAWINGS ARE GENERALLY DIAGRAMMATIC, CONTRACTOR TO FIELD LOCATE ALL PIPING, MECHANICAL EQUIPMENT, AND ASSOCIATED APPURTENANCES TO AVOID CONFLICTS TO ALL EXISTING EQUIPMENT, PIPING, AND ELECTRICAL CLEARANCES.
- SHEET NOTES:**
- CUSTOM FABRICATED NEW DRAIN PAN TO BE INSTALLED, FOR DETAIL SEE 1/M602.
 - ALL COMPARTMENTS (#1 - #9) TO BE CLEAN OF SCALED BUILDUP AND CORROSION. EXISTING WALLS FLOORS AND WALL ARE 304 STAINLESS STEEL.
 - ROUTE 1-1/2" DRAINAGE PIPING THROUGH BASE CHANNEL TO DRAIN PUMPS, FOR DETAIL SEE 2/M602.
 - DEMOLISHED 1-1/4" (E) DRAIN PIPING AND INSTALL NEW 1-1/2" DRAIN PIPING TO PUMP, CP-B.
 - REMOVE EXISTING DUCT SEALANT IN ALL COMPARTMENTS. AFTER COMPARTMENTS ARE CLEANED OF ALL SCALED BUILDUP AND CORROSION APPLY NEW HIGH PRESSURE DUCT SEALANT IN ACCORDANCE WITH MANUFACTURER'S APPLICATION INSTRUCTIONS AT ALL SEAMS AND PENETRATIONS.
 - APPLY NEW EPOXY COATING, TO WALLS OF AHU-1(E) IN COMPARTMENTS #2, #8, AND #9.
 - INSTALL NEW PUMPS, CP-A, CP-B, AND CP-C, AT THIS LOCATION. PUMPS ARE TO BE INSTALLED IN ACCORDANCE WITH MANUFACTURER'S INSTRUCTIONS.
 - FOR DRAIN PAN DETAIL SEE 1/M602.
 - FOR DRAIN PIPING DETAIL SEE 2/M602.
- ADDENDUM 1**
- APPLY NEW EPOXY COATING, TO WALLS OF AHU-1(E) IN COMPARTMENTS #2, #8, AND #9.

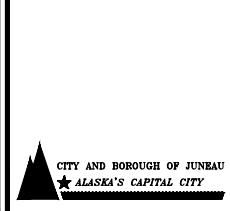


2 EXHIBIT PHOTO - EXISTING FLOOR SINK COMPARTMENT #2
 SCALE: NOT TO SCALE



REVISION			
REV	DATE	DESCRIPTION	BY
0	02/2017	ISSUED FOR CONSTRUCTION	TLM
1	02/2017	REVIEW COMMENT CHANGES	TLM
2	02/2017	ADDENDUM NO 1	TLM

REVISION			
REV	DATE	DESCRIPTION	BY

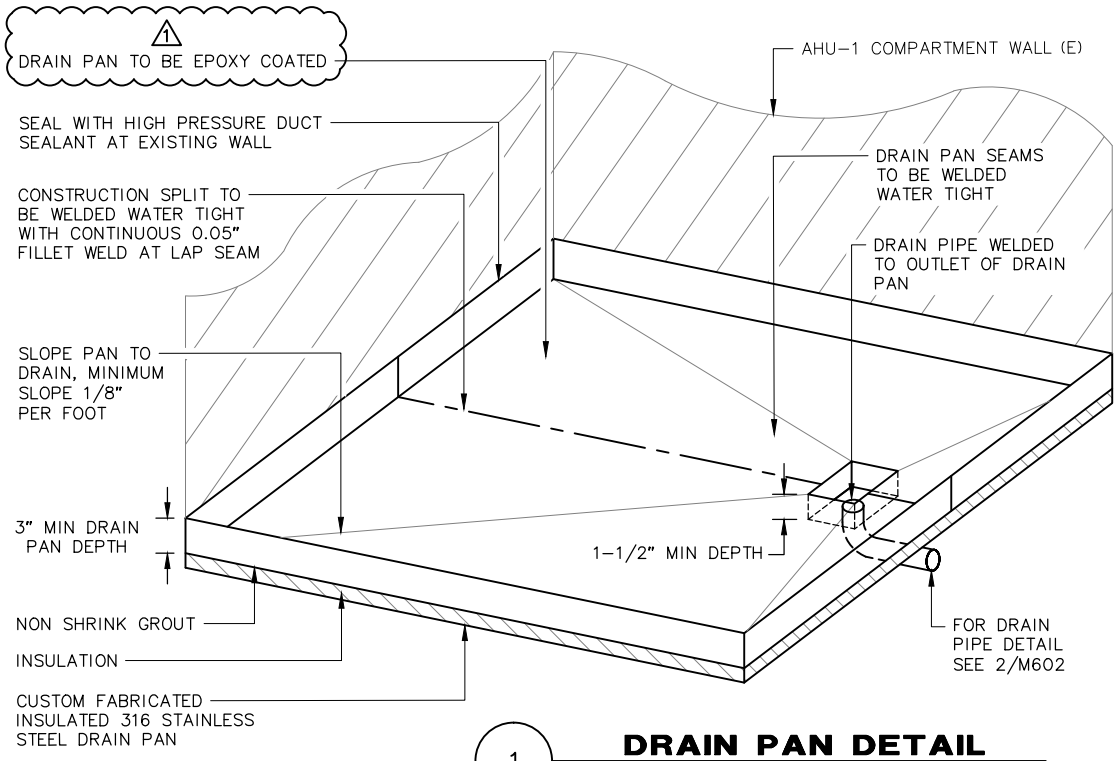


SCALE	HOR. PER PLANS VER. N/A
DESIGNED BY	TLM
DRAWN BY	WTP
CHECKED BY	TLM
APPROVED BY	TLM

PROJECT NO: 20701.03	DIMOND PARK AQUATIC CENTER WHIRLPOOL HVAC AND AHU-1 UPGRADES
MECHANICAL ENLARGED PLAN - AHU-1(E)	
CITY AND BOROUGH OF JUNEAU, AK	
STATUS: ISSUED FOR CONSTRUCTION	DATE: 02/2017

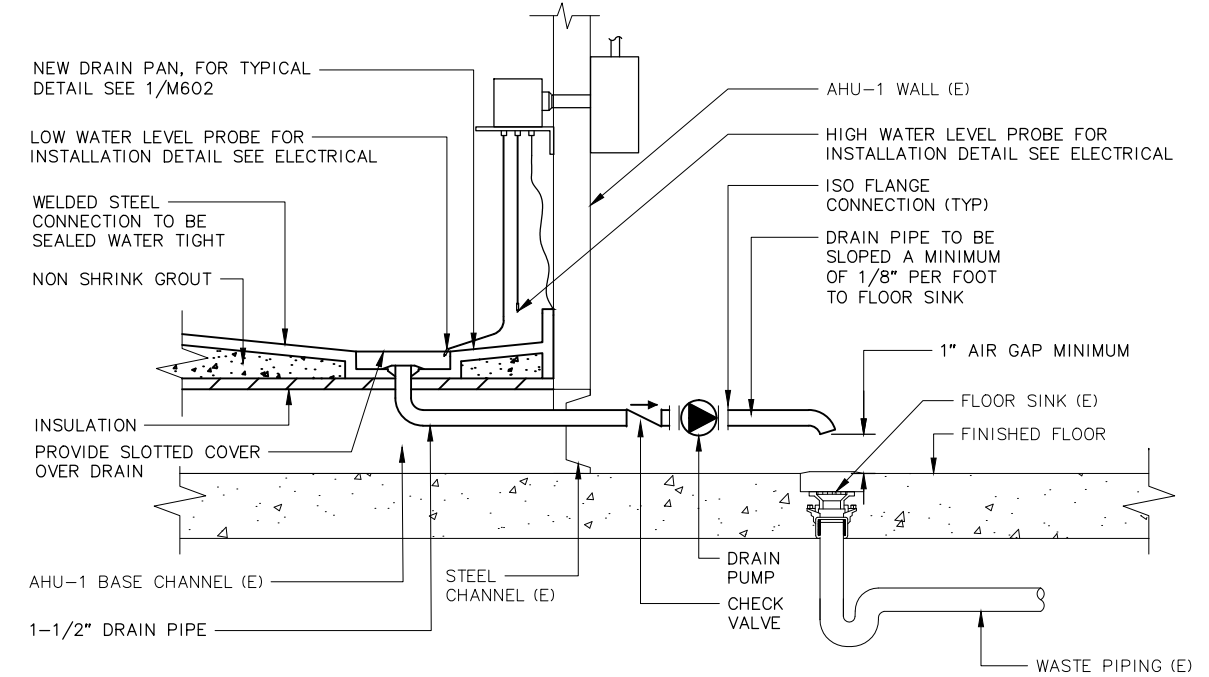
PROJECT NO.	20701.03
CITY GRID	
WATER GRID	
SEWER GRID	
SHEET	M500
OF	12

File: J:\JebData\20701.03_CbJ_Diamond_Aquatic_Center_Ahu-1_Upgrade\00_CADD\01_Working_Sett\06_Mechanical\20701.03_Mechanical_Details.dwg PLOT DATE: 2/28/2017 11:13 AM

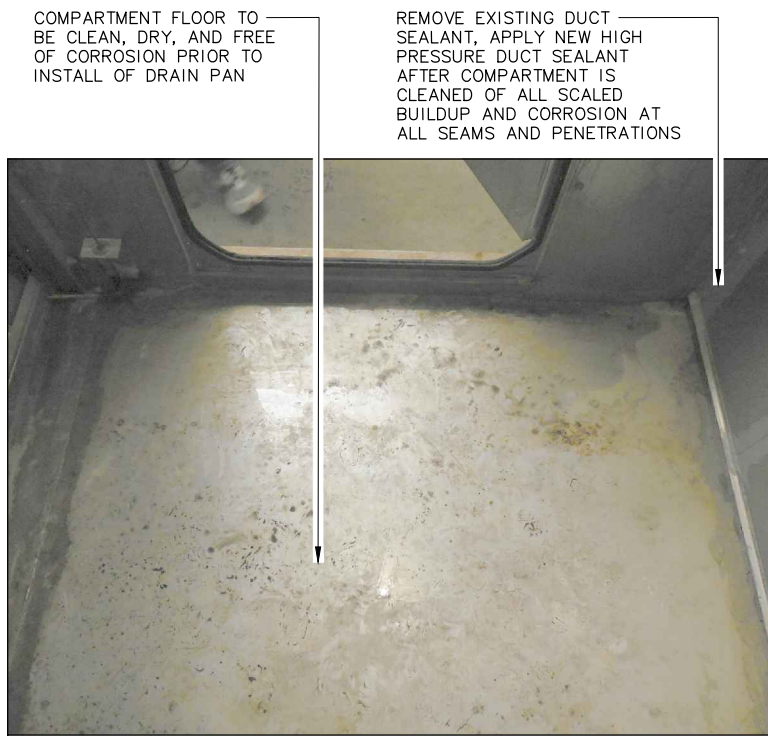


1 DRAIN PAN DETAIL
SCALE: NOT TO SCALE

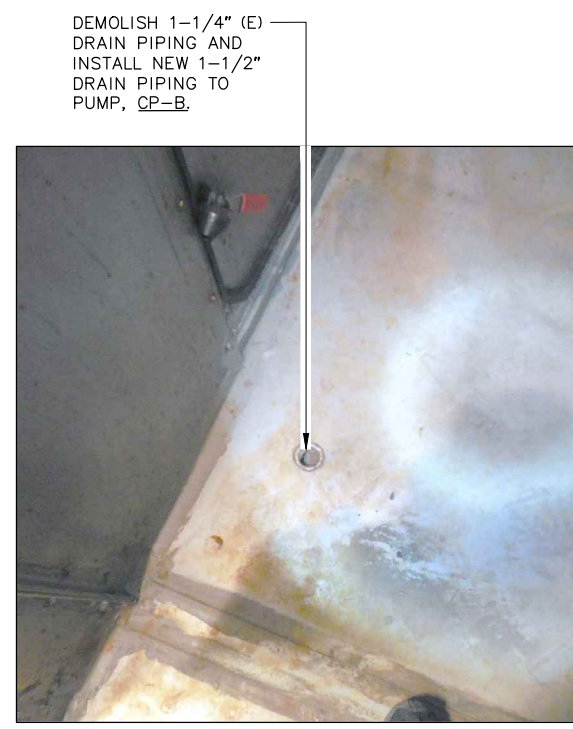
- DETAIL NOTES:**
1. PRIOR TO INSTALLATION OF DRAIN PAN, SEAL COMPARTMENT TO PREVENT TRANSFER OF AIR AND DEBRIS DURING INSTALLATION.
 2. WATER TEST PAN FOR LEAKS AFTER INSTALLATION. TEST IS TO BE PERFORMED BY PLUGGING THE DRAIN PAN OUTLET AND FILLING THE PAN WITH WATER TO A DEPTH OF 1". AFTER A PERIOD OF 1 HOUR, THE WATER LEVEL IN THE PAN IS TO BE VERIFIED TO CONFIRM THAT NO LEAKAGE HAS OCCURED.
 3. THIS IS A TYPICAL DETAIL. SHOP DRAWING DOES NOT DETAIL ACTUAL CONSTRUCTION OF DRAIN PAN FOR EACH COMPARTMENT. CONTRACTOR TO VERIFY ALL DIMENSIONS PRIOR TO FABRICATION OF DRAIN PAN.



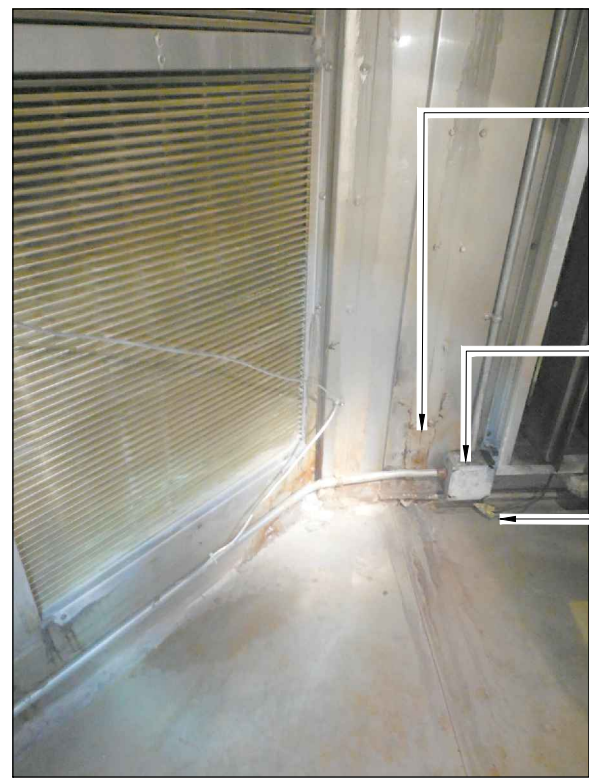
2 DRAIN PIPING DETAIL
SCALE: NOT TO SCALE



3 EXHIBIT PHOTO - COMPARTMENT #2 HX OUTSIDE AIR
SCALE: NOT TO SCALE



4 EXHIBIT PHOTO - COMPARTMENT #8 MIXED AIR DISCHARGE
SCALE: NOT TO SCALE



5 EXHIBIT PHOTO - COMPARTMENT #8 MIXED AIR DISCHARGE
SCALE: NOT TO SCALE

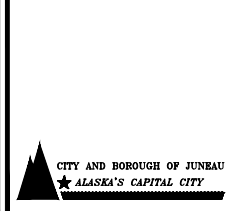


6 EXHIBIT PHOTO - COMPARTMENT #9 EXHAUST AIR
SCALE: NOT TO SCALE



REVISION			
REV	DATE	DESCRIPTION	BY
0	02/2017	ISSUED FOR CONSTRUCTION	TLM
1	02/2017	ADDENDUM NO 1	TLM

REVISION			
REV	DATE	DESCRIPTION	BY



SCALE	HOR. N/A VER. N/A
DESIGNED BY	TLM
DRAWN BY	WTP
CHECKED BY	TLM
APPROVED BY	TLM

PROJECT NO: 20701.03
DIMOND PARK AQUATIC CENTER WHIRLPOOL
HVAC AND AHU-1 UPGRADES
MECHANICAL DETAILS AND PHOTOS - AHU-1(E)
CITY AND BOROUGH OF JUNEAU, AK
STATUS: ISSUED FOR CONSTRUCTION DATE: 02/2017

PROJECT NO.	20701.03
CITY GRID	
WATER GRID	
SEWER GRID	
SHEET	M602
OF	12