

**NorthWind Architects LLC**  
 126 Seward Street  
 Juneau, AK 99801  
 907.586.6150

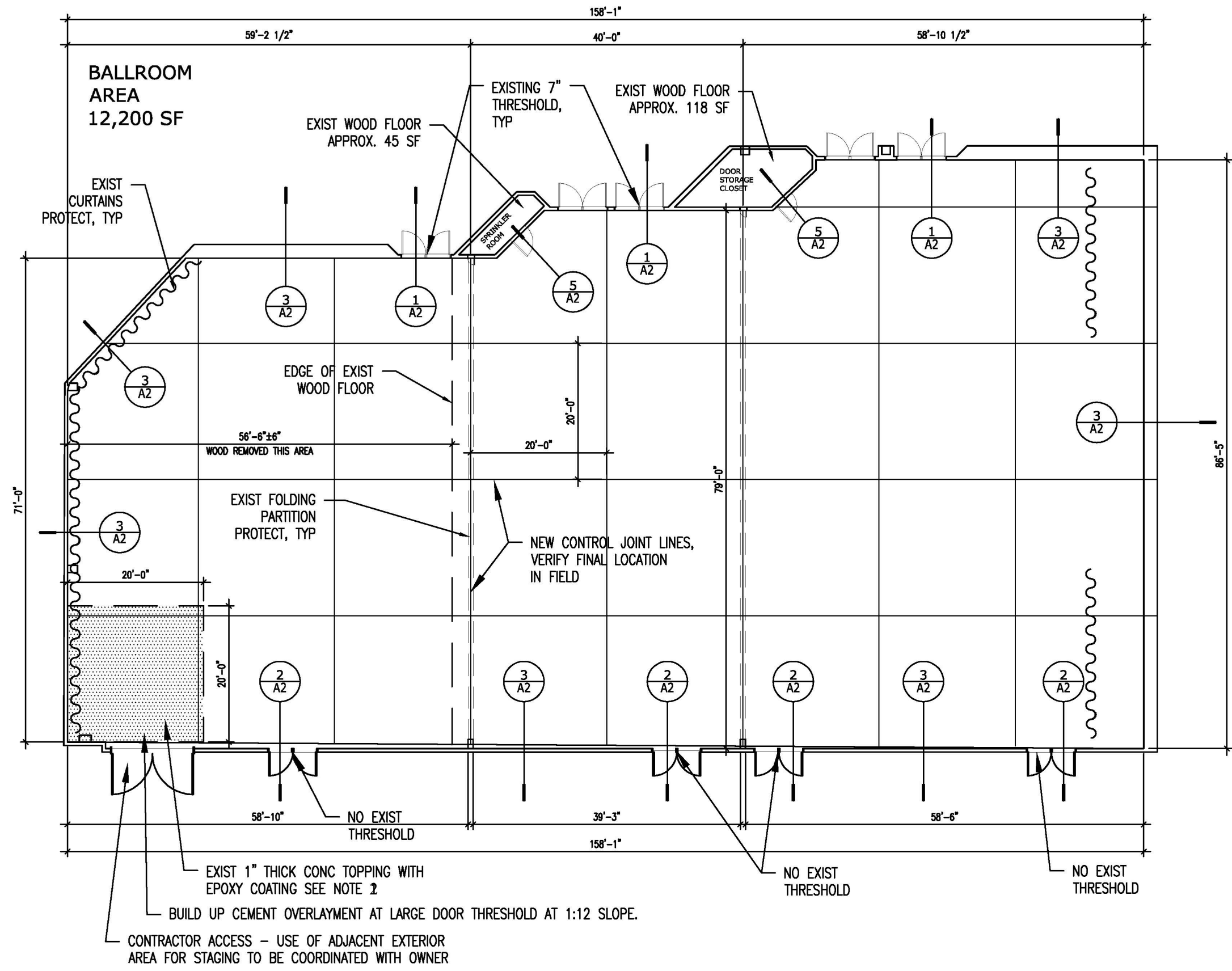
CONSTRUCTION DOCUMENTS  
**CENTENNIAL HALL  
 FLOOR RENOVATION**  
 CITY & BOROUGH OF JUNEAU  
 JUNEAU, ALASKA

SHEET TITLE:  
**OVERALL BALLROOM PLAN**  
 DATE: OCTOBER 2016  
 CHECKED BY: GRG  
 DRAWN: GRG  
 SHEET #

**A1**

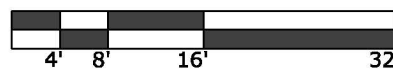
**CONSTRUCTION NOTES:**

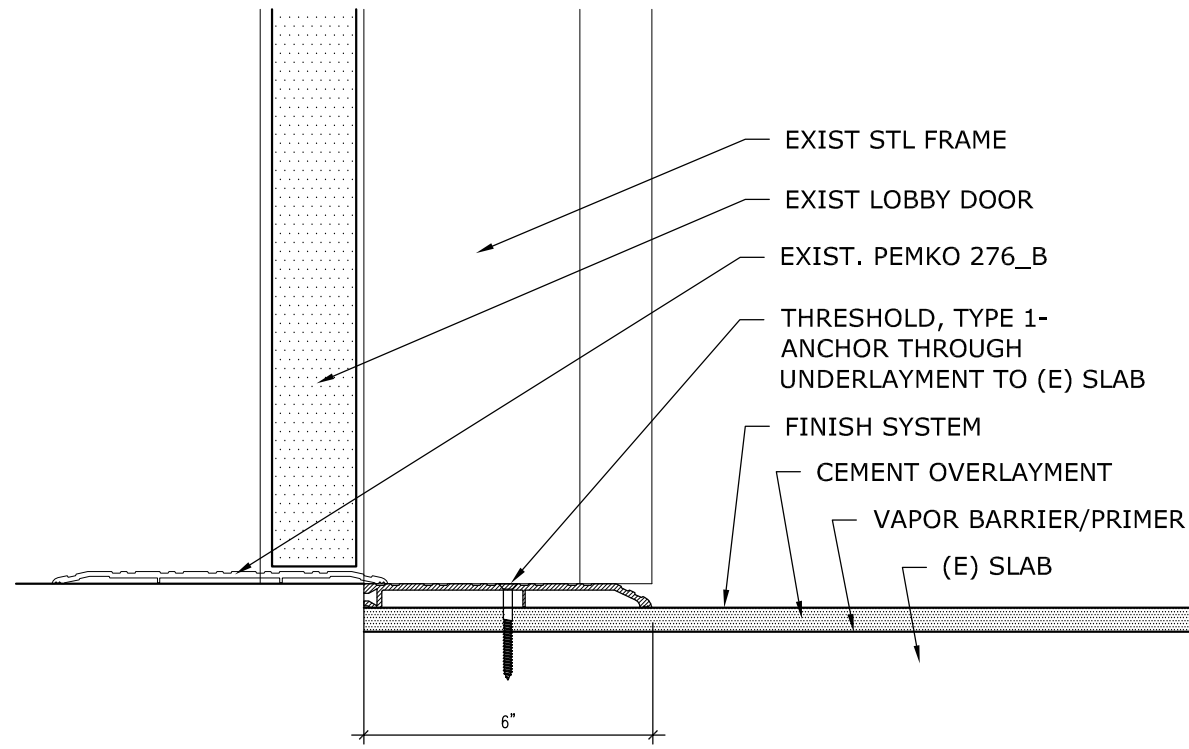
- PROJECT LIMITS: WORK AND CONTRACTOR ACCESS SHALL BE LIMITED TO BALLROOM AREA DEFINED ON THIS SHEET EXCEPT FOR CONTRACTOR RESTROOM ACCESS.
- REMOVE CEMENT TOPPING AREA WITH EPOXY COATING, ~20' x 20'
- EXISTING FLOOR: WOOD FLOORING HAS BEEN REMOVED BY OWNER IN SOME AREAS. REMOVE 1" THICK WOOD FLOORING IN ALL OTHER AREAS, PREP SLAB.
- REMOVE, REPLACE AND RESET FLOOR CLEAN-OUT COVER (6" COVER) WHERE OCCURS. ASSUME (2) LOCATIONS. MFR: ZURN ZN1400 6" OR EQUAL, BRASS CLEAN OUT, ADJUSTABLE FLUSH FLOOR FITTING.
- REMOVE AND REINSTALL OR PROTECT IN-PLACE ALL MECHANICAL, ELECTRICAL AND ARCHITECTURAL COMPONENTS INSTALLED ON OR IN WALLS TO ALLOW INSTALLATION OF NEW BLOCKING, GWB AND CUSTOM BASE. MOVE (E) COMPONENTS THE MINIMUM DISTANCE NECESSARY WHERE CONFLICTING WITH NEW BLOCKING. SCRIBE AND CUT NEW GWB AND BASE AS REQUIRED TO ACCOMMODATE EXISTING COMPONENTS. WHERE NECESSARY, EXTEND COMPONENTS BY ADDITION OF MUD RINGS, ETC TO POSITION FLUSH WITH FACE OF NEW FINISHES.
- NEW CONTROL JOINTS SHOWN HERE ARE FOR BID QUANTIFICATION PURPOSES ONLY. FINAL NEW CONTROL JOINT LOCATIONS SHALL BE ESTABLISHED BASED ON CONTRACTOR'S EXISTING CONDITION SURVEY TO BE CONDUCTED IMMEDIATELY UPON REMOVAL OF THE EXISTING WOOD FLOORING SYSTEM.



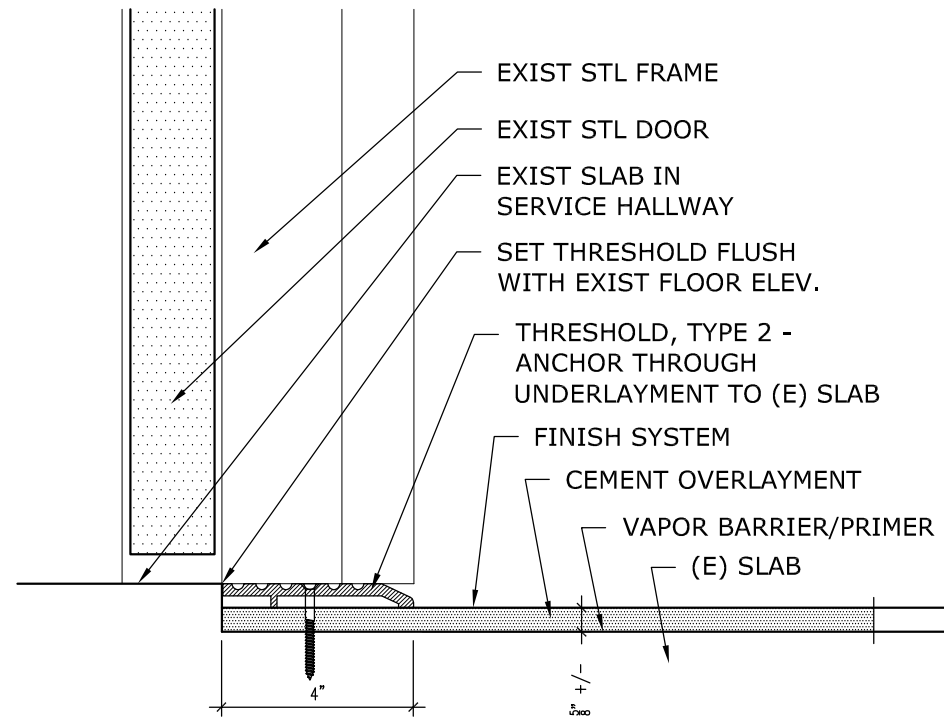
© NorthWind Architects, LLC  
 NWA-1642 Centennial Hall Floor

**1 OVERALL BALLROOM PLAN**  
 1/16" = 1'-0"





1 LOBBY DOOR THRESHOLD  
3" = 1'-0"



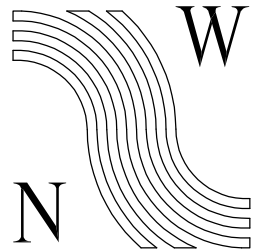
2 SERVICE CORRIDOR THRESHOLD  
3" = 1'-0"

CONSTRUCTION NOTES:

1. REMOVE AND REINSTALL OR PROTECT IN-PLACE ALL MECHANICAL, ELECTRICAL AND ARCHITECTURAL COMPONENTS INSTALLED ON OR IN WALLS TO ALLOW INSTALLATION OF NEW BLOCKING, GWB AND CUSTOM BASE. MOVE (E) COMPONENTS THE MINIMUM DISTANCE NECESSARY WHERE CONFLICTING WITH NEW BLOCKING. SCRIBE AND CUT NEW GWB AND BASE AS REQUIRED TO ACCOMMODATE EXISTING COMPONENTS. WHERE NECESSARY, EXTEND COMPONENTS BY ADDITION OF MUD RINGS, ETC TO POSITION FLUSH WITH FACE OF NEW FINISHES.

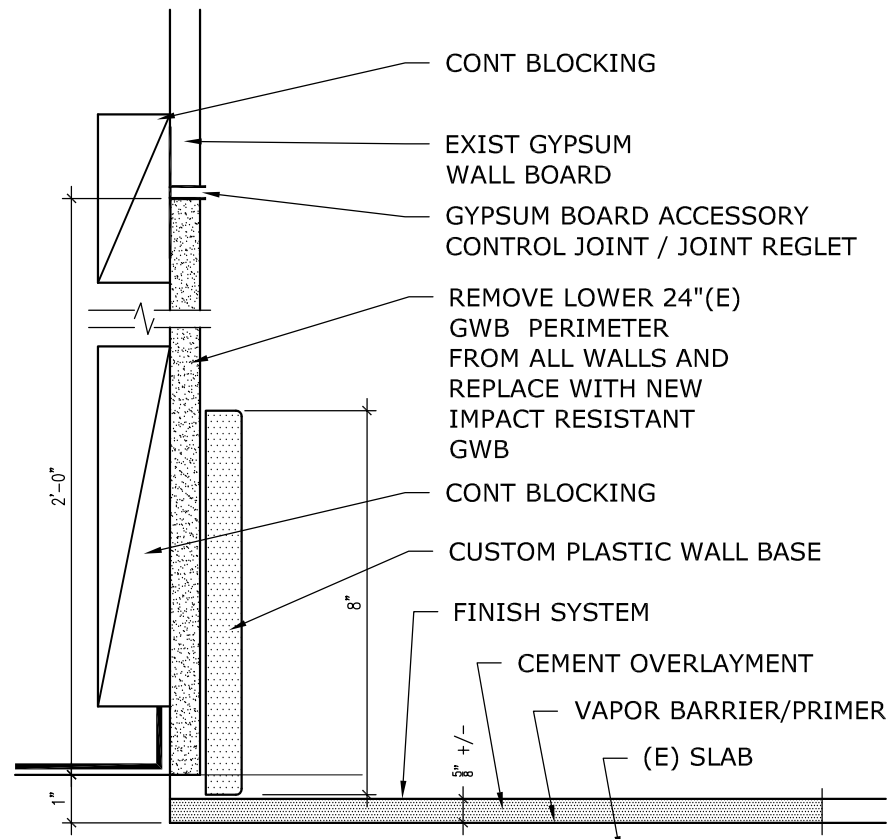


09/29/2016



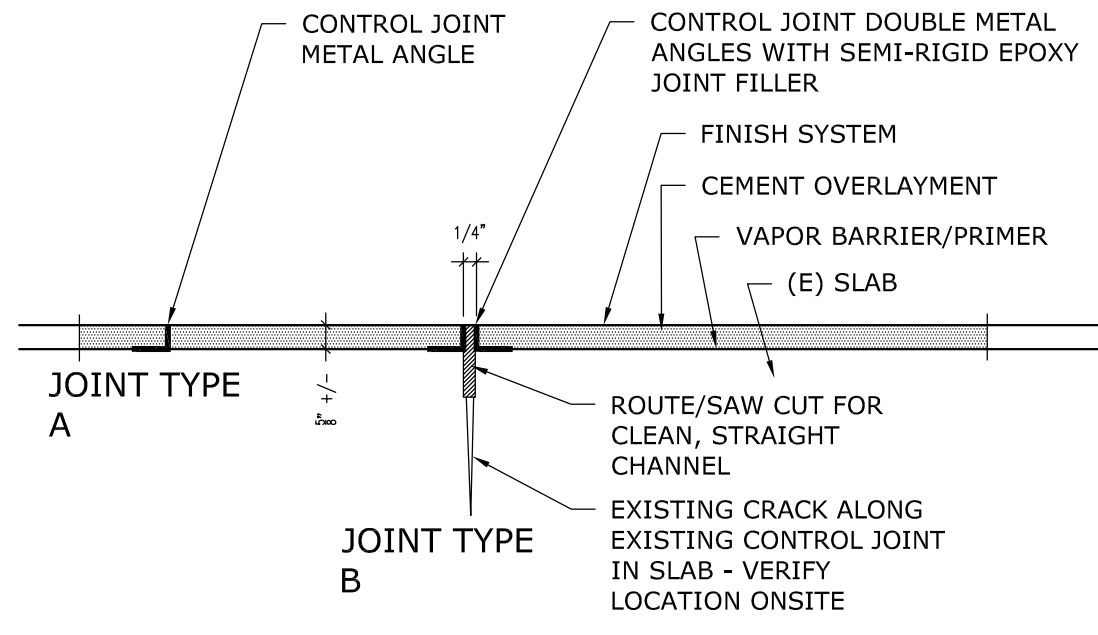
NorthWind  
Architects LLC

126 Seward Street  
Juneau, AK 99801  
907.586.6150

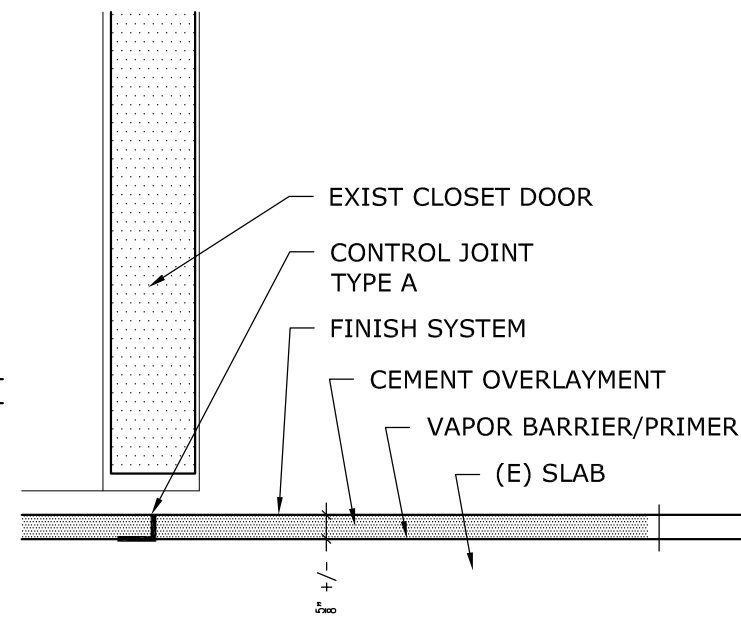


AT EXT WALLS, REPAIR AND/OR REPLACE EXISTING VAPOR RETARDER AND INSULATION WHERE DAMAGED OR MISSING

3 WALL TO FLOOR TRANSITION  
3" = 1'-0"



4 CONTROL JOINTS  
3" = 1'-0"



5 CLOSET DOOR TRANSITION  
3" = 1'-0"

CONSTRUCTION DOCUMENTS

CENTENNIAL HALL  
FLOOR RENOVATION

CITY & BOROUGH OF JUNEAU  
JUNEAU, ALASKA

SHEET TITLE:  
FLOOR &  
WALL  
DETAILS

DATE: OCTOBER 2016  
CHECKED BY: GRG  
DRAWN: GRG

SHEET #

A2