



ADDENDUM TO THE CONTRACT

for the

**Bartlett Regional Hospital (BRH)
Tomosynthesis Renovation
Contract No. BE17-032**

ADDENDUM NO.: ONE

**CURRENT DEADLINE FOR BIDS:
November 1, 2016**

PREVIOUS ADDENDA: NONE

ISSUED BY: City and Borough of Juneau
ENGINEERING DEPARTMENT
155 South Seward Street
Juneau, Alaska 99801

DATE ADDENDUM ISSUED: October 20, 2016

The following items of the contract are modified as herein indicated. All other items remain the same. This addendum has been issued and is posted online. Please refer to the CBJ Engineering Contracts Division webpage at: <http://www.juneau.org/engineering ftp/contracts/Contracts.php>

DRAWINGS:

Item No. 1 HOLOGIC Drawings, **Delete** Drawings: 1.0 COVER/TITLE, 2.0 PRELIMINARY ROOM PLAN (OPTION 1), 3.0 ELECTRICAL NOTES, 4.0 GENERAL NOTES and **replace** with the following attached drawings:

- 1.0 COVER/TITLE
- 2.0 FINAL ROOM PLAN
- 2.1 STRUCTURAL PLAN
- 3.0 ELECTRICAL LEGEND
- 3.1 ELECTRICAL PLAN
- 3.2 ELECTRICAL DETAILS
- 3.3 ELECTRICAL NOTES
- 4.0 GENERAL NOTES
- 4.1 EQUIPMENT DETAILS

By: 
Greg Smith,
Contract Administrator

HOLOGIC, INC.

FINAL 'SELENIA DIMENSIONS' ROOM PLANS

BARTLETT REGIONAL HOSPITAL

ROOM 1305/1306

JUNEAU, AK

DRAWING LEGEND

SHEET	DESCRIPTION
1.0	COVER / TITLE
2.0	FINAL ROOM PLAN
2.1	STRUCTURAL PLAN
3.0	ELECTRICAL LEGEND
3.1	ELECTRICAL PLAN
3.2	ELECTRICAL DETAILS
3.3	ELECTRICAL NOTES
4.0	GENERAL NOTES
4.1	EQUIPMENT DETAILS

HOLOGIC

Hologic, Inc.,
35 Crosby Drive,
Bedford, MA 01730

REV. 0.1

DOCUMENT NUMBER

DATE

DATE

DATE

DATE

REV. 0.1

DOCUMENT NUMBER

DATE

DATE

DATE

DATE

THIS DOCUMENT CONTAINS PROPRIETARY DATA OF HOLOGIC, INC. AND SHALL NOT BE USED FOR PURPOSES OTHER THAN THOSE AGREED UPON BETWEEN HOLOGIC AND ITS CUSTOMER. THIS DRAWING IS NOT TO BE USED FOR CONSTRUCTION PURPOSES.

BARTLETT REGIONAL HOSP.
FINAL ROOM PLAN
JUNEAU, AK

THESE DRAWINGS ARE FOR
REVIEWING PURPOSES ONLY

DATE: 04-05-16
SCALE: 3/8"=1'-0"
DRAWN BY: GRF
PURCHASE ORDER:

PROJECT NO:
16376F

SHEET NO:
1.0

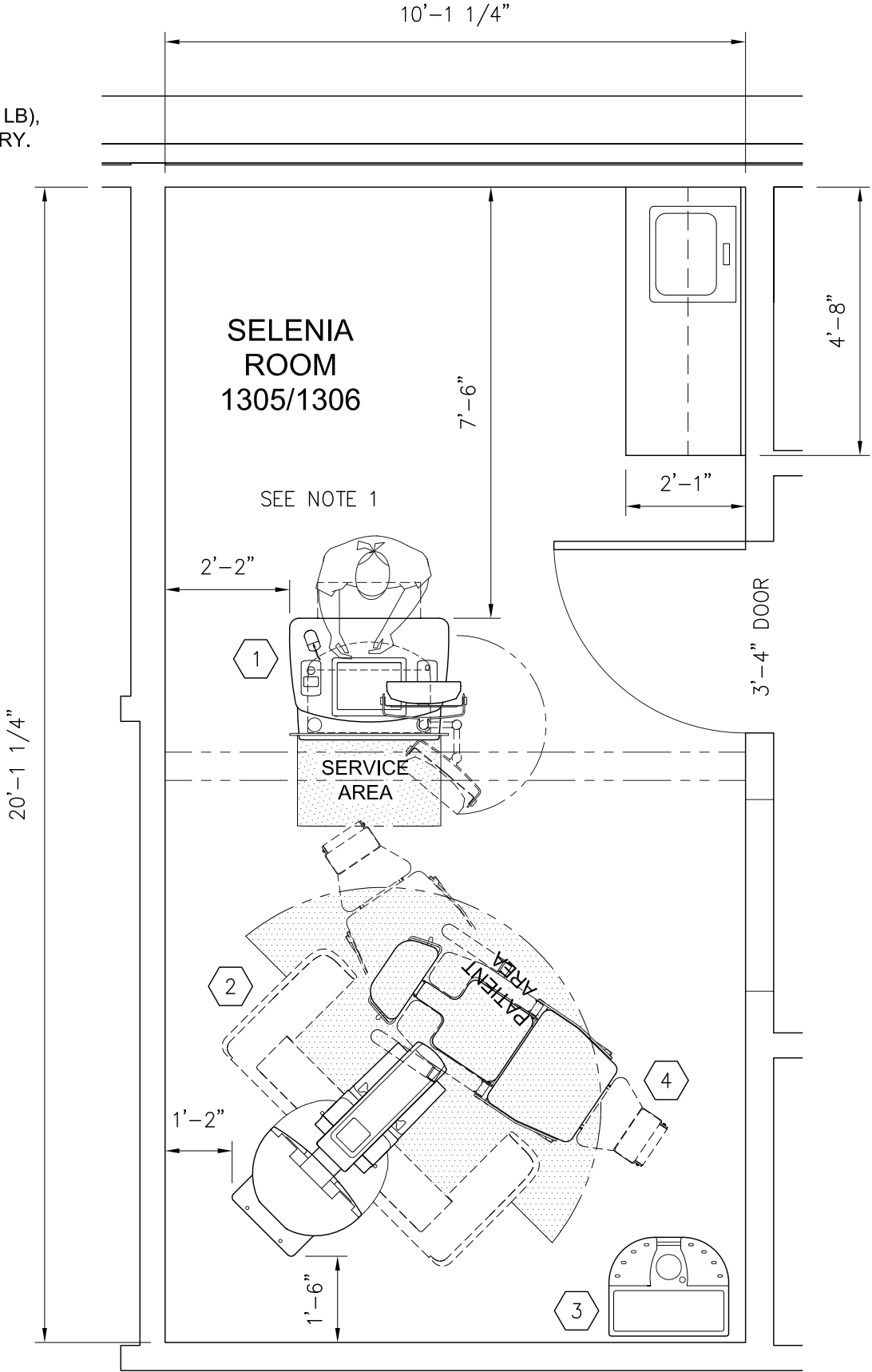
EQUIPMENT LEGEND						
N/A = NOT AVAILABLE						
ITEM	DESCRIPTION	BTU/HR	WT/LBS	WIDTH	DEPTH	HEIGHT
1	HOLOGIC 'SELENIA DIMENSIONS' UNIVERSAL ACQUISITION WORKSTATION (WITH SHIELD)	4,740 TYPICAL	460 209kg	36.9"/ 53.4" 93.8cm	25.4"/ 48.4" 122cm	80.3" 204cm
2	HOLOGIC 'SELENIA DIMENSIONS' GANTRY WITH C-ARM	6,800 MAX.	897 * 407kg	26"/66.5" 66/173cm	51.6" 138cm	87.8" 223cm
3	SUROS ATEC BREAST BIOPSY AND EXCISION SYSTEM (OPTIONAL – VERIFY)	N/A	100 45kg	25" 63cm	21" 53cm	37" 93cm
4	AKRUS 5010 MAMMOGRAPHY POSITIONING CHAIR (OPTIONAL – VERIFY)	–	209.4 95kg	29.9" 76cm	66.1" 168cm	56.7" 144cm

- NOTE 1: ALL RADIATION PROTECTION TO BE DESIGNED BY, OR APPROVED BY CUSTOMER'S LICENSED RADIATION PHYSICIST.
- NOTE 2: EQUIPMENT INSTALLERS WILL USE EXISTING WIREWAYS WHEREVER POSSIBLE. HOSPITAL ENGINEERING DEPARTMENT TO PROVIDE HOLOGIC SITE PLANNING OFFICE WITH AS BUILT DRAWINGS, SHOWING WIREWAY LOCATIONS AND ROUTING ABOVE CEILING AND BELOW FLOOR.
- NOTE 3: HOLOGIC STRONGLY RECOMMENDS REMOTE ACCESS VIA HOLOGIC CONNECT TO THE ACQUISITION WORKSTATION FOR REMOTE DIAGNOSTIC SUPPORT. CONSULT WITH HOLOGIC CONNECTIVITY SPECIALIST REGARDING REQUIREMENTS. RECOMMENDATION: SWITCH GIGABIT ETHERNET (1000 BASE-T).
- NOTE 4: 'SELENIA DIMENSIONS' GANTRY POWER IS TO BE PERMANENTLY WIRED. HOLOGIC STRONGLY RECOMMENDS AGAINST USE OF PLUG AND RECEPTACLE FOR GANTRY POWER.
- NOTE 5: IN ACCORDANCE WITH IEC-60601-1, A MINIMUM CLEARANCE OF 50CM (20") MUST BE MAINTAINED BETWEEN THE TUBE HEAD AT ANY POSITION OF ROTATION, AND ANY STATIONARY OBJECT (EXCLUDING FLOOR). IF THIS REQUIREMENT IS NOT MET, AUTO C-ARM ROTATION MUST BE DISABLED AT THE TIME OF INSTALLATION.

SITE CONDITIONS FOR SELENIA DIMENSIONS SYSTEM	
MINIMUM RECOMMENDED ROOM SIZE	9'-0" X 12'-0"
MINIMUM CEILING HEIGHT	8'-0" A.F.F.
RECOMMENDED CEILING HEIGHT	9'-0" A.F.F.
OPERATING TEMPERATURE RANGE (MAINTAIN TEMPERATURE RANGE 24 HRS./DAY, 7 DAYS/WK.)	68 – 86° F (20–30° C) 77° F – ROOM TEMP FOR OPTIMAL PERFORMANCE. MAXIMUM ALLOWABLE TEMPERATURE CHANGE RATE OF 10° C PER HOUR.
OPERATING HUMIDITY RANGE	20 – 80% , NON CONDENSING.
STORAGE TEMPERATURE (SYSTEM POWERED DOWN OR IN STORAGE)	50 – 104° F – GANTRY, EXCLUDING DETECTOR ASSY. 59 – 86° F – DETECTOR ASSEMBLY 14 – 104° F – ACQUISITION WORKSTATION
ELECTROMAGNETIC INTERFERENCE	REFER TO SITE PLANNING GUIDE FOR SPECIFICATIONS
EQUIPMENT ENTRY REQUIREMENTS	
GANTRY SHIPPING CRATE	38" x 66" x 88" (97 cm x 168 cm x 224 cm)
ACQUISITION WORKSTATION SHIPPING CRATE	N/A
MINIMUM ENTRANCE	2'-6" x 7'-0" (76 cm x 213 cm)

NOTE: THE EQUIPMENT LAYOUT, ROOM DIMENSIONS, ELECTRICAL AND MECHANICAL DETAILS, ARE BASED ON THE BEST INFORMATION AVAILABLE FROM THE SITE, IN ADDITION TO THE CUSTOMER'S KNOWN REQUIREMENTS. ARCHITECTURAL OR ELECTRICAL CHANGES, INCLUDING RELOCATION OF EQUIPMENT ILLUSTRATED IN THIS DRAWING, ARE ALLOWED ONLY WITH NOTIFICATION IN WRITING, AND REVIEW BY HOLOGIC SERVICE DEPT.. HOLOGIC RESERVES THE RIGHT TO MAKE CHANGES BASED ON CUSTOMER'S WISHES, CONSTRUCTION PROBLEMS, ETC.

* INCLUDES AFFIRM
(APPROXIMATELY 15 LB),
ATTACHED TO GANTRY.



'SELENIA DIMENSIONS' EQUIPMENT PLAN
OPTION 1 SELECTED WITH REVISIONS.

NOTE:
THE AFFIRM DEVICE, AKRUS CHAIR AND SUROS DEVICE ARE ADDED. PRIOR TO INSTALLATION, THIS ROOM MUST BE TESTED FOR POTENTIAL ELECTROMAGNETIC INTERFERENCE.

PROPOSED Hologic, Inc., 35 Crosby Drive, Bedford, MA 01730		REV. 0.1	
REV. AUTHORED BY	DATE	DOCUMENT NUMBER	
REV. DRAFTED BY	DATE		
REV. RELEASE DATE		SIZE B	ARCH

THIS DOCUMENT CONTAINS PROPRIETARY DATA OF HOLOGIC, INC. AND SHALL NOT BE USED FOR PURPOSES OTHER THAN THOSE AGREED UPON BETWEEN HOLOGIC AND ITS CUSTOMER. THIS DRAWING IS NOT TO BE USED FOR CONSTRUCTION PURPOSES.

BARTLETT REGIONAL HOSP.

FINAL ROOM PLAN

JUNEAU, AK




THESE DRAWINGS ARE FOR
REVIEWING PURPOSES ONLY

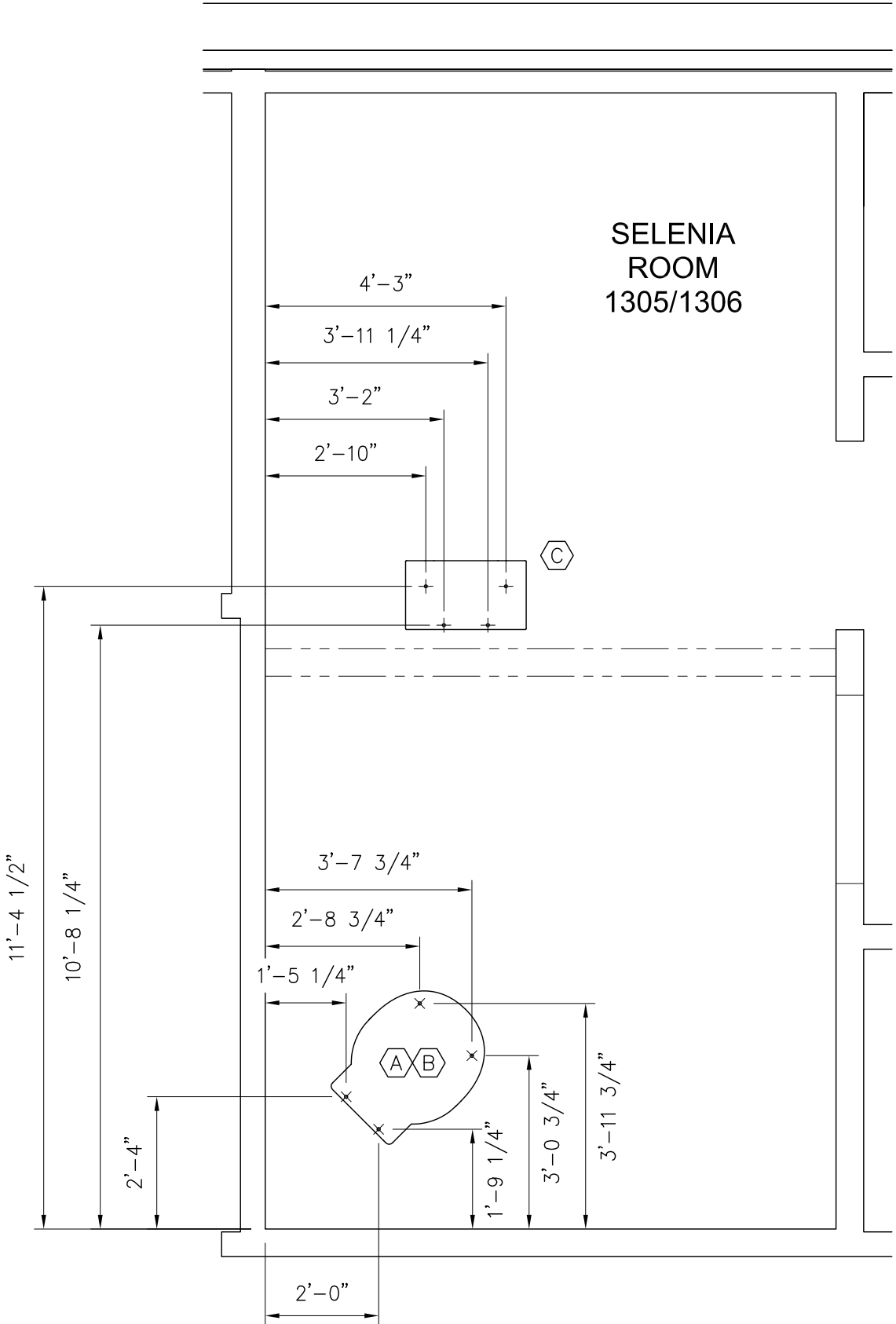
DATE: 04-05-16	SCALE: 3/8"=1'-0"	DRAWN BY: GRF	PURCHASE ORDER:
PROJECT NO: 16376F			
SHEET NO: 2.0			

NOTE:
BOLT HOLE LOCATIONS ARE APPROXIMATE, AND REPRESENT THE RECOMMENDED LOCATIONS FOR EQUIPMENT PLACEMENT. CUSTOMER IS RESPONSIBLE FOR ENSURING FLOOR CONDITIONS DO NOT PREVENT EQUIPMENT ANCHORAGE AS SHOWN. ACTUAL LOCATION MAY CHANGE DUE TO SITE CONDITIONS, CUSTOMER PREFERENCES, OR OTHER FACTORS.

IT IS THE RESPONSIBILITY OF THE CUSTOMER, OR THEIR AGENTS TO VERIFY THAT THE FLOOR IS CAPABLE OF SUPPORTING THE EQUIPMENT FLOOR LOADING, AND ANCHORAGE REQUIREMENTS. ADDITIONAL BLOCKING OR BRACING MAY BE REQUIRED WHEN WOOD FLOORS ARE PRESENT. HOLOGIC IS NOT LIABLE FOR ANY DAMAGE OR INJURY CAUSED BY INSTALLATION IN ANY LOCATION WITH INADEQUATE FLOOR LOADING CONDITIONS.

STRUCTURAL LEGEND

FUTURE	
EXISTING	
* INSTALLED BY CUSTOMER/CONTRACTOR	
* FURNISHED BY CUSTOMER/CONTRACTOR	
INSTALLED BY XRAY EQUIPMENT VENDOR	
FURNISHED BY XRAY EQUIPMENT VENDOR.	
ITEM	DESCRIPTION
	FOOT PRINT OF 'SELENIA DIMENSIONS' GANTRY BASE. GANTRY BASE SUPPLIED AND INSTALLED BY HOLOGIC, INC. (4X) 11/16" DIA. MOUNTING HOLES. MINIMUM GANTRY FLOOR LOADING: 210 LB/FT ²
	FLOOR SURFACE TO BE LEVELED TO WITHIN .+OR- 1/16" OVER LENGTH OF 'SELENIA DIMENSIONS' BASE PLATE.
	FOOT PRINT OF ACQUISITION WORKSTATION BASE. CONSOLE BASE SUPPLIED AND INSTALLED BY HOLOGIC, INC. (4X) 5/8" DIA. MOUNTING HOLES. MINIMUM CONSOLE FLOOR LOADING: 210 LB/FT ²
SEISMIC CALCULATION DOCUMENTS ARE AVAILABLE ON REQUEST FOR ADDITIONAL FLOOR LOADING INFORMATION. CONTACT HOLOGIC SITE PLANNING DEPARTMENT, REGIONAL INSTALLATION COORDINATOR, SALES REPRESENTATIVE, OR LOCAL FIELD ENGINEER TO OBTAIN THIS INFORMATION.	
* (TO BE SUPPLIED AND INSTALLED BY HOSPITAL'S GENERAL CONTRACTOR.)	




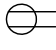






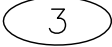
STRUCTURAL PLAN

THIS DOCUMENT CONTAINS PROPRIETARY DATA OF HOLOGIC, INC. AND SHALL NOT BE USED FOR PURPOSES OTHER THAN THOSE AGREED UPON BETWEEN HOLOGIC AND ITS CUSTOMER. THIS DRAWING IS NOT TO BE USED FOR CONSTRUCTION PURPOSES.

BARTLETT REGIONAL HOSP.
FINAL ROOM PLAN
JUNEAU, AK
THESE DRAWINGS ARE FOR REVIEWING PURPOSES ONLY

ELECTRICAL LEGEND

SUPPLIED AND INSTALLED BY HOSPITAL’S ELECTRICAL CONTRACTOR

ITEM	DESCRIPTION
CB1	DEDICATED CIRCUIT BREAKER/DISCONNECT WITH REMOTE EMERGENCY OFF SHUNT TRIP. (SHUNT TRIP USED ONLY WHERE REQUIRED BY LOCAL CODE OR CUSTOMER) SUPPLY 200–240 VAC, 50–60 HZ, SINGLE PHASE, 40 AMP, HIGH MAGNETIC (HM) TYPE, HACR 489 RATED CIRCUIT BREAKER/DISCONNECT. PROVIDE 3 CONDUCTOR #8 AWG WIRES FROM 'CB1' TO 'WH1' WITH 36” NON–TERMINATED PIGTAIL EXTENDING FROM THE END OF 'FD1'. PROVIDE CONDUIT TO 'WH1', SIZED PER CODE. MAXIMUM LINE IMPEDANCE NOT TO EXCEED: 0.20 OHMS FOR 208, 220, 230, 240VAC, 0.16 OHMS FOR 200VAC (IEC 601–2–7, TABLE 101). SEE ELECTRICAL SPECIFICATIONS SHEET 3.2. LOCATE PER LOCAL CODE. GANTRY TO BE PERMANENTLY WIRED. HOLOGIC STRONGLY RECOMMENDS AGAINST THE USE OF PLUG AND RECEPTACLE FOR GANTRY POWER.
CO1	2” DIA. GROMMETED CUTOUT IN END FITTING, OR COVER OF 'WH1'.
WH1	HORIZONTAL SURFACE WIREWAY, 1 3/4” x 4 3/4” WIREMOLD 4000 SERIES OR EQUAL, DIVIDED, WITH REMOVABLE COVERS, BOTTOM OF WIREWAY AT 12” A.F.F.. PROVIDE FULL ACCESS TO 'WV1', AND 'WV2'.
WV1,WV2	VERTICAL SURFACE WIREWAY, 1 3/4” x 4 3/4” WIREMOLD 4000 SERIES OR EQUAL, DIVIDED, WITH REMOVABLE COVERS. PROVIDE FULL ACCESS TO 'WH1', AND CORRESPONDING FLOOR DUCT (WV1 TO FD1/WV2 TO FD2).
FD1	HORIZONTAL SURFACE WIREWAY, 1 3/4” x 4 3/4” WIREMOLD 4000 SERIES OR EQUAL, DIVIDED, WITH REMOVABLE COVERS, PROVIDE FULL ACCESS TO 'WV1'. PROVIDE 3/4” FLEXIBLE METALLIC CONDUIT (SEALTITE OR EQUAL) TO GANTRY, AND GROMMETED OPEN END.
FD2	HORIZONTAL SURFACE WIREWAY, 1 3/4” x 4 3/4” WIREMOLD 4000 SERIES OR EQUAL, DIVIDED, WITH REMOVABLE COVERS, PROVIDE FULL ACCESS TO 'WV2'. PROVIDE GROMMETED OPEN END.
	DEDICATED 120V, 20 AMP HOSPITAL GRADE DUPLEX OUTLET. (ACQUISITION WORKSTATION / SUROS ATEC). ** 120V OUTLET AND NETWORK OUTLETS FOR AWS CONSOLE MAY BE INSTALLED IN COVER OF 'FD2' NEAR END.
	120V, 20 AMP DUPLEX OUTLET. (FOR SERVICE/TEST EQUIPMENT).
	WALL OUTLET BOX FOR CAT 5 CABLE. (HOSPITAL NETWORK CONNECTION). RECOMMEND HOLOGIC CONNECT FOR REMOTE DIAGNOSTIC SERVICE, SWITCH GIGABIT ETHERNET (1000 BASE–T).
	DEDICATED OUTSIDE PHONE LINE (CUSTOMER TO DETERMINE REQUIREMENT/LOCATION)
	REMOTE EMERGENCY OFF SHUNT TRIP SWITCH, LOCATE PER CODE. SEE DETAIL ON SHEET 3.1. (USED ONLY WHERE REQUIRED BY LOCAL CODE OR CUSTOMER PREFERENCE).
	WARNING LIGHTS. SEE DETAIL SHEET 3.1 (USED ONLY WHERE REQUIRED BY LOCAL CODE OR CUSTOMER PREFERENCE).
	PROVIDE CONDUIT AS REQUIRED TO CIRCUIT BREAKER 'CB1' FROM INCOMING POWER SOURCE. SIZE PER CODE.
	PROVIDE CONDUIT FROM 'CB1' TO 'WH1'. SIZE PER CODE.
	PROVIDE 3/4” DIAMETER FLEXIBLE METALLIC CONDUIT (SEALTITE OR EQUAL) FROM END OF 'FD1' TO BACK OF GANTRY. USE ELBOW FITTING IN END OF 'FD1'. LENGTH SHOULD ALLOW FOR A 12 – 18” SERVICE LOOP.

NOTE: HOLOGIC INSTALLERS WILL UTILIZE EXISTING WIREWAYS, CONDUITS, POWER LOCATIONS, ETC., WHENEVER FEASIBLE. RECOMMEND ELECTRICAL CONTRACTOR COORDINATE WITH THE LOCAL HOLOGIC INSTALLER AND/OR INSTALLATION COORDINATOR, AND REFER TO NATIONAL AND LOCAL CODES, TO VERIFY SUITABILITY OF EXISTING ELECTRICAL FEATURES FOR THE INSTALLATION OF EQUIPMENT SHOWN.

Hologic, Inc.,
35 Crosby Drive,
Bedford, MA 01730

PROPOSED

HOLOGIC

REV. 0.1

REV. 0.1

DOCUMENT NUMBER

REV. 0.1

DATE

REV. 0.1

DATE

REV. 0.1

DATE

THIS DOCUMENT CONTAINS PROPRIETARY DATA OF HOLOGIC, INC. AND SHALL NOT BE USED FOR PURPOSES OTHER THAN THOSE AGREED UPON BETWEEN HOLOGIC AND ITS CUSTOMER. THIS DRAWING IS NOT TO BE USED FOR CONSTRUCTION PURPOSES.

BARTLETT REGIONAL HOSP.

FINAL ROOM PLAN

JUNEAU, AK

THESE DRAWINGS ARE FOR REVIEWING PURPOSES ONLY

DATE: 04-05-16

SCALE: 3/8"=1'-0"

DRAWN BY: GRF

PURCHASE ORDER:

PROJECT NO: 16376F

SHEET NO: 3.0



REV. 0.1	DOCUMENT NUMBER	REV.
REV. AUTHORED BY	DATE	B ARCH
REV. DRAFTED BY	DATE	
REV. RELEASE DATE	SIZE	

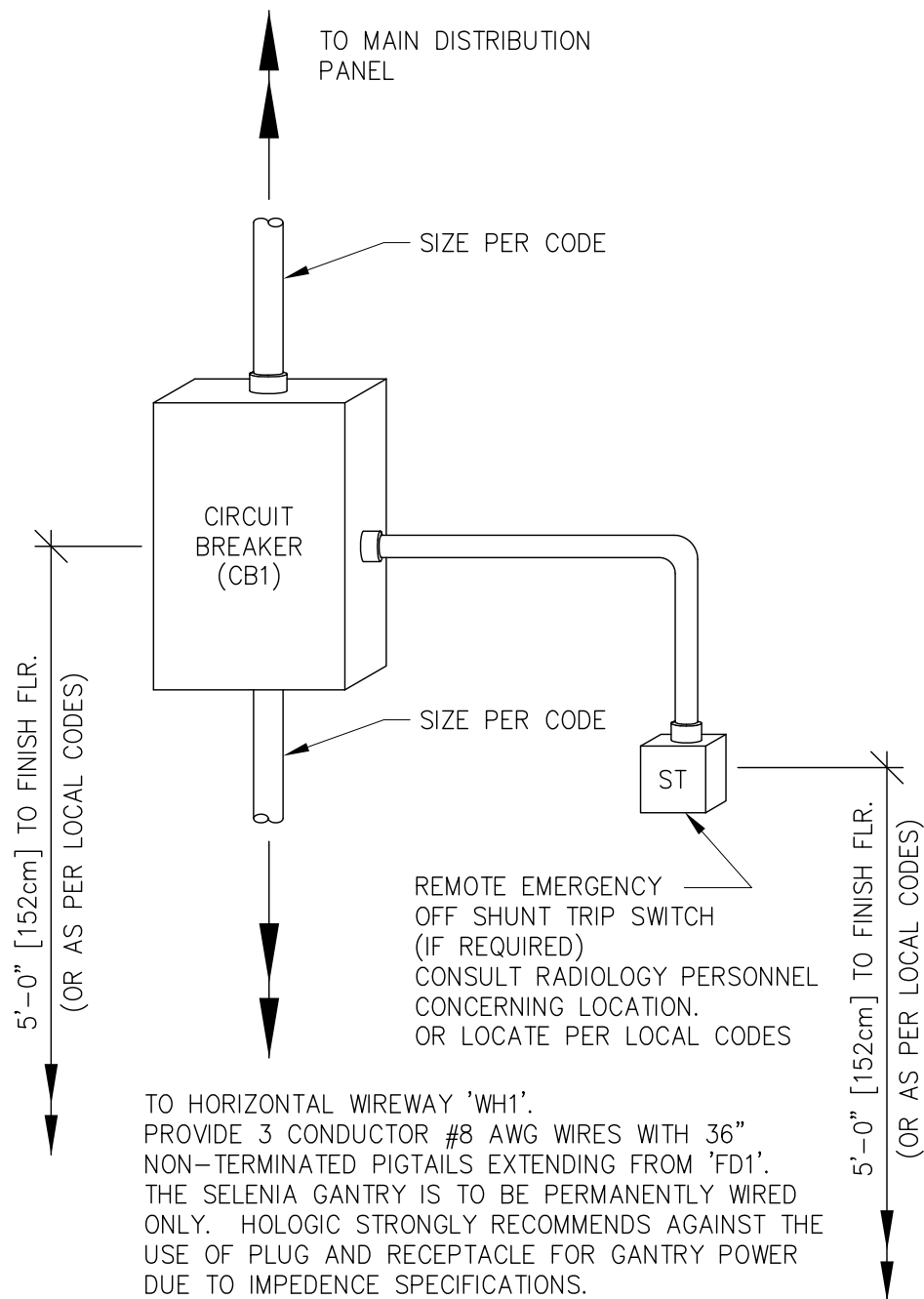
THIS DOCUMENT CONTAINS PROPRIETARY DATA OF HOLOGIC, INC. AND SHALL NOT BE USED FOR PURPOSES OTHER THAN THOSE AGREED UPON BETWEEN HOLOGIC AND ITS CUSTOMER. THIS DRAWING IS NOT TO BE USED FOR CONSTRUCTION PURPOSES.

BARTLETT REGIONAL HOSP.
FINAL ROOM PLAN

JUNEAU, AK

THESE DRAWINGS ARE FOR
REVIEWING PURPOSES ONLY

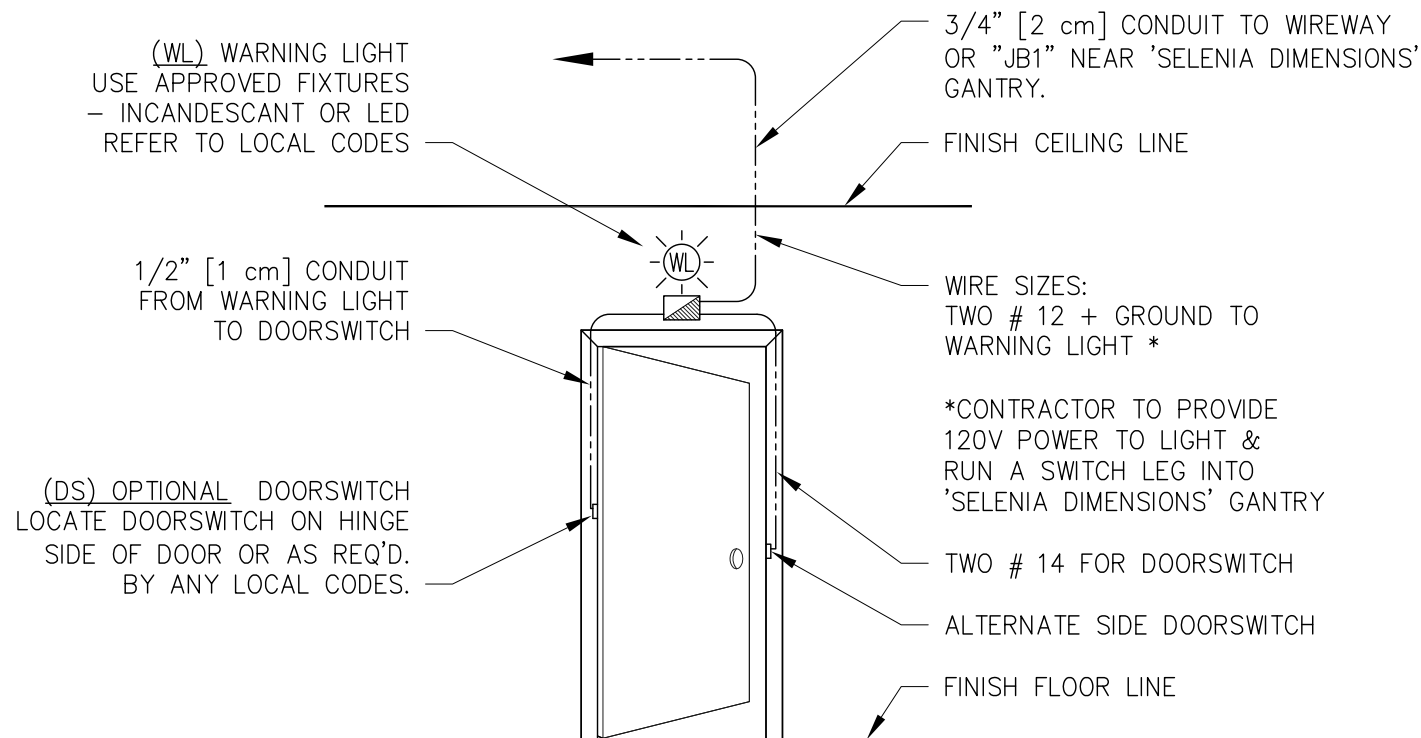
DATE:	04-05-16	SCALE:	3/8"=1'-0"	DRAWN BY:	GRF	PURCHASE ORDER:
PROJECT NO:						
16376F		SHEET NO:				
3.1						



TYPICAL CIRCUIT BREAKER DIAGRAM

CUSTOMER MAY HAVE TO STEP-UP EXISTING INCOMING POWER WITH TRANSFORMER TO MEET HOLOGIC'S POWER SPECIFICATIONS. MUST MEET ALL ELECTRICAL SPECIFICATIONS PER SHEET 3.0, 3.2. PLEASE VALIDATE PRIOR TO INSTALLATION, AND/OR CONSULT WITH LOCAL HOLOGIC FIELD ENGINEER OR INSTALLATION COORDINATOR PRIOR TO INSTALLATION.

IF STEP-UP TRANSFORMER IS USED FOR THIS APPLICATION TRANSFORMER MUST HAVE LESS THAN .15 OHMS OF IMPEDANCE.



TYPICAL DOOR SWITCH / WARNING LIGHT DETAIL
(ONLY USED WHERE REQUIRED BY LOCAL CODE OR CUSTOMER PREFERENCE)

DESCRIPTION:
WARNING LIGHT = 4" [10cm] STANDARD BOX WITH "X-RAY ON" OR RED WARNING LAMP OVER DOOR. USE APPROVED FIXTURES - INCANDESCENT OR LED. REFER TO LOCAL CODES.
(SUPPLIED & INSTALLED BY HOSPITAL'S ELECTRICAL CONTRACTOR.)

HOSPITAL'S ELECTRICAL CONTRACTOR TO PROVIDE POWER TO THE LAMP, AND A SWITCH LEG TO THE 'SELENIA DIMENSIONS' GANTRY FOR CONTACT CLOSURE ONLY. AN XRAY EXPOSURE WILL CLOSE THE CONTACT, ENERGIZING THE LIGHT.

THE CONTACT RELAYS ARE RATED AT: 250VAC, 10 AMP NORMALLY OPEN, AND 10 AMP, 30VDC NORMALLY OPEN.

OPTIONAL DOORSWITCH = MICROSWITCH IN DOOR JAMB TO ENABLE "ROOM IN USE" LIGHT OR "X-RAY SYSTEM POWER ON" INDICATOR.
NOTE: CUSTOMER MAY USE A WALL SWITCH FOR THIS PURPOSE IF DESIRED.
(TYPICALLY USED ONLY WHERE REQUIRED BY CODE, OR CUSTOMER PREFERENCE)

Hologic, Inc., 35 Crosby Drive, Bedford, MA 01730		DATE	DATE	REV. 0.1
HOLOGIC	REV. AUTHORED BY	DOCUMENT NUMBER	REV. DRAFTED BY	REV. RELEASE DATE
				SIZE B ARCH

THIS DOCUMENT CONTAINS PROPRIETARY DATA OF HOLOGIC, INC. AND SHALL NOT BE USED FOR PURPOSES OTHER THAN THOSE AGREED UPON BETWEEN HOLOGIC AND ITS CUSTOMER. THIS DRAWING IS NOT TO BE USED FOR CONSTRUCTION PURPOSES.

BARTLETT REGIONAL HOSP.
FINAL ROOM PLAN
JUNEAU, AK
THESE DRAWINGS ARE FOR REVIEWING PURPOSES ONLY

DATE: 04-05-16	SCALE: 3/8"=1'-0"	DRAWN BY: GRF	PURCHASE ORDER:
----------------	-------------------	---------------	-----------------

PROJECT NO: 16376F

SHEET NO: 3.2

ELECTRICAL USE REQUIREMENTS		
REQUIREMENT INPUT LINE VOLTAGE INPUT CURRENT FREQUENCY NUMBER OF PHASES	GANTRY 200, 208, 220, 230, 240VAC, 50–60 HZ, SINGLE PHASE 40 AMP, HIGH MAGNETIC (HM) TYPE, HACR 489 RATED CIRCUIT BREAKER/DISCONNECT. GANTRY IS TO BE PERMANENTLY WIRED. HOLOGIC STRONGLY RECOMMENDS AGAINST PLUG AND RECEPTACLE	ACQUISITION WORKSTATION 100, 120 VAC/220, 230, 240VAC 3.5 A/2.0A 50–60 HZ, SINGLE PHASE HOSPITAL GRADE RECEPTACLE REQUIRED
PHYSICAL AND ENVIRONMENTAL REQUIREMENTS		
OPERATING TEMPERATURE RANGE (MAINTAIN TEMPERATURE RANGE 24 HRS./DAY, 7 DAYS/WK.)	68 – 86° F (20–30° C) / 77° F – ROOM TEMP FOR OPTIMAL PERFORMANCE MAXIMUM ALLOWABLE TEMPERATURE CHANGE RATE OF 10° C PER HOUR.	
OPERATING HUMIDITY RANGE	20 – 80% , NON CONDENSING.	
STORAGE TEMPERATURE (SYSTEM POWERED DOWN, OR IN STORAGE)	50 – 104° F (10 – 40° C) – GANTRY, EXCLUDING DETECTOR ASSEMBLY 59 – 86° F (15 – 30° C) – DETECTOR ASSEMBLY 14 – 104° F (–10 – 40° C) – ACQUISITION WORKSTATION	
ELECTROMAGNETIC INTERFERENCE	REFER TO SITE PLANNING GUIDE FOR SPECIFICATIONS	
MAXIMUM SEPARATION FROM IMAGE RECEPTOR	N/A	12.2M (40')
OVERALL DIMENSIONS	26"W x 35"D x 88"H * C–ARM SPANS 68"W * (66cm x 89cm x 224cm)	53.4"W x 48.4"D x 80.3"H (135.6cm x 122cm x 204cm)

NETWORKING NOTES:	
SUPPLYING AND INSTALLING NETWORK CONNECTIONS BETWEEN DIAGNOSTIC IMAGING EQUIPMENT AND OTHER NODE CONNECTIONS SHALL BE THE CUSTOMER'S RESPONSIBILITY. CUSTOMER MUST SPECIFY, SUPPLY AND INSTALL PROPER RECEPTACLES, AUI TRANSCEIVERS, CABLING, REPEATERS, ROUTERS, MODEMS, ETC. WHICH ARE CONSISTENT WITH THE SITE NEEDS AND SOUND NETWORK IMPLEMENTATION PRACTICES. ALSO INCLUDED, BUT NOT LIMITED TO, THE CUSTOMER'S RESPONSIBILITY IS THE PURCHASE AND INSTALLATION OF CONDUITS, RACEWAYS FOR CONTAINMENT AND ROUTING OF NETWORKING CABLES, AS DETERMINED BY SITE CONDITIONS, OR REQUIRED BY PREVAILING CODES.	

MAMMOGRAPHY SYSTEM SPECIFICATIONS:		C-ARM ASSEMBLY	
SYSTEM		VERTICAL TRAVEL ROTATION	71 CM TO 142 CM (27.8" TO 56") MOTORIZED +195° TO –155° CONVENTIONAL MAMMOGRAPHY +180° TO –140° BIOPSY, TOMOSYNTHESIS
INPUT LINE	200–240VAC, (±10%), 65 AMP MAX. FOR 5 SECOND DURATION AT 208VAC, 50–60HZ	SID PATIENT FACE SHIELD	70 CM REMOVABLE, RETRACTABLE
GENERATOR		COMPRESSION MODES (OPERATOR SELECTABLE)	
TYPE	CONSTANT POTENTIAL HIGH FREQUENCY, INVERTER TYPE	PRE–COMPRESSION FULL COMPRESSION DUAL COMPRESSION	70 TO 134 NEWTON, [N] (15.7 TO 30LBS) MOTORIZED 89 TO 178 NEWTON [N] (20 TO 40LBS) MOTORIZED FIRST ACTIVATION PROVIDES PRE–COMPRESSION FORCE; INCREMENTAL INCREASE OF COMPRESSION WITH EACH SUBSEQUENT ACTIVATION UP TO FULL COMPRESSION
RATING kV RANGE mAs RANGE mA RANGE	7.0 kW, MAX. (ISOWATT), 200 mA AT 35 kV 20 kV TO 49 kV IN 1 kV INCREMENTS 3.0 mAs TO 500 mAs 10 mA TO 200 mA, LARGE FOCAL SPOT 10 mA TO 50 mA, SMALL FOCAL SPOT	MANUAL COMPRESSION	300 N (67.4 LBS) MAXIMUM
X-RAY TUBE		EXPOSURE MODES	
ANODE TYPE ANODE DESIGN ANODE SPEED TARGET–TUBE ANGLE	TUNGSTEN, ROTATING BI–ANGULAR HIGH–SPEED (9500 RPM) 16" (LARGE FOCAL SPOT 10" (SMALL FOCAL SPOT)	MANUAL AUTO–TIME AUTO kV AUTO FILTER	OPERATOR SELECTS ALL PARAMETERS SYSTEM SELECTS mAS, OPERATOR SELECTS FILTER, kV SYSTEM SELECTS kV, mAS, OPERATOR SELECTS FILTER SYSTEM SELECTS FILTER, kV, AND mAS
HEAT CAPACITY FOCAL SPOT SIZE FILTRATION	300,000 HU (222 kJoules) 0.1 MM (SMALL), 0.3 MM (LARGE) 0.050 MM RHODIUM (Rh); 0.050 MM SILVER– (Ag); 0.70 MM ALUMINUM (Al)3 BERYLLIUM	MAGNIFICATION	
PORT RADIATION SHIELD		FACTOR	1.5x;; 1.8x
H x W LEAD EQUIVALENCE MATERIAL		COLLIMATION SYSTEM	
		TYPE	FULLY AUTOMATIC, OR USER SELECTABLE

UL LISTING NOTE

THE 'SELENIA DIMENSIONS' SYSTEM IS UL APPROVED 'AS A SYSTEM'. THE GANTRY AND CONSOLE ARE NOT CONSIDERED TO BE INDEPENDANT COMPONENTS (BY UL). A SINGLE UL CERTIFICATION LABEL HAS BEEN PROVIDED BY UL, AND IS AFFIXED TO THE AWS CONSOLE.

SUPPLEMENTAL NOTES

ALL ITEMS LISTED BELOW ARE TO BE PROVIDED / DESIGNED BY THE ARCHITECT. THE ARCHITECT SHALL CONSULT WITH THE CUSTOMER FOR ANY ADDITIONAL INFORMATION.

1. RECOMMEND INCANDESCENT AS WELL AS FLORESCENT LIGHT FIXTURES. THE INCANDESCENT FIXTURES ARE TO BE DISTRIBUTED AROUND THE ROOM. INCANDESCENT FIXTURES SHOULD BE PROVIDED WITH DIMMER CONTROLS. THE DIMMER CONTROLS SHOULD BE LOCATED NEAR THE ROOM ENTRANCES AND IN THE CONTROL AREAS.
2. IT IS RECOMMENDED THAT ALL DIAGNOSTIC ROOMS SHOULD HAVE TILE OR VINYL FLOORING.
3. A TILE DROP CEILING IS RECOMMENDED FOR ANY DIAGNOSTIC ROOMS.
4. ALL CABINETRY WORK IS TO BE DESIGNED AND PROVIDED BY THE ARCHITECT. RECOMMEND ALL COUNTERS HAVE ROUNDED CORNERS.

GROUNDING NOTES

* FIELD VERIFY ACTUAL APPLICATION WITH LOCAL LICENCED ELECTRICIAN.

THE SOURCE GROUND CONNECTION FOR THIS SYSTEM WILL BE THE GROUND SIDE OF THE NEUTRAL TO GROUND BONDING POINT FOR THE POWER DELIVERED TO THIS SYSTEM. THE SOURCE WILL BE EITHER THE MAIN SERVICE ENTRANCE PANEL OR A SEPARATELY DERIVED SOURCE, SUCH AS AN ISOLATION TRANSFORMER. SYSTEM LOCALIZED COLD WATER PIPING OR BUILDING STEEL ARE NOT ACCEPTABLE GROUND SOURCE CONNECTION POINTS. THE SOURCE GROUND CONDUCTOR SHALL BE OF THE SAME SIZE AND TYPE AS THE PHASE CONDUCTORS SUPPLYING THE SYSTEM. REFER TO LOCAL AND NATIONAL ELECTRICAL CODES FOR GROUNDING REQUIREMENTS.

WIRING NOTES

ELECTRICAL CONTRACTOR SHALL FURNISH AND INSTALL ALL CONDUITS, WIRE, WIREWAYS, DISTRIBUTION TRANSFORMERS, JUNCTION BOXES, ENCLOSURES, CIRCUIT BREAKERS, ETC. ALL WIRES TO BE THHN TYPE, STRANDED COPPER UNLESS OTHERWISE SPECIFIED. THE ELECTRICAL CONTRACTOR SHALL SUPPLY LUG PAIRS OF #8 OR GREATER FOR ALL CABLES LISTED WITHIN THE SCOPE OF THIS WORK. CONDUIT AND DUCT RUNS ARE SHOWN SCHEMATICALLY. ACTUAL BUILDING CONDITIONS WILL DETERMINE CONDUIT AND DUCT ROUTES. CONDUIT TURNS TO HAVE LARGE SWEEPING BENDS WITH MINIMUM RADIUS AS SPECIFIED IN NEC ART. 346–10. IF LARGE BENDS IN CONDUIT ARE NOT POSSIBLE, USE SERVICE ENTRANCE ELBOW CONNECTORS TO AVOID DAMAGE TO CABLE. ELECTRICAL CONTRACTOR TO PROVIDE 10'–0" TAILS FOR ALL WIRES UNLESS OTHERWISE SPECIFIED AND IDENTIFY BOTH ENDS OF ALL WIRES. ELECTRICAL CONTRACTOR SHALL MAKE EVERY EFFORT TO ENSURE THAT POINT TO POINT CONDUIT RUNS ARE AS SHORT AS FIELD CONDITIONS ALLOW. LEAVE PULL WIRE IN EMPTY CONDUITS. WORK SHALL COMPLY WITH REGULATORY AGENCIES OF JURISDICTION ALL SUCH AGENCIES SUPERSEDE THESE DRAWINGS AND MUST BE ADHERED TO. THE ELECTRICAL CONTRACTOR SHALL BE RESPONSIBLE FOR SCRUTINIZING THESE DRAWINGS AND SHALL MAKE CORRECTIONS ACCORDING TO PREVAILING CODES. NOTE: CONDUITS MAY BE INCREASED IN SIZE BUT NEVER DECREASED WITHOUT CONSENT FROM THE EQUIPMENT REPRESENTATIVES. ELECTRICAL CONTRACTOR SHALL BE RESPONSIBLE FOR INSTALLING THE PATIENT GROUNDING NETWORK PER NATIONAL ELECTRIC CODE ARTICLE 517 AND NFPA 70. ALL CONDUIT SHALL BE RIGID TYPE UNLESS SPECIFIED OTHERWISE IN THIS DRAWING SET. ALL CONDUIT RUNS EXPOSED TO WET ENVIRONMENTS SHALL BE MADE LIQUID TIGHT. (e.g. UNDERGROUND, ETC.) ALL FLUSH MOUNTED ELECTRICAL BOXES AND WIRE TROUGHS SHALL HAVE OVERSIZED COVER PLATES. ALL FLUSH MOUNTED ELECTRICAL BOXES AND WIRE TROUGHS EXPOSED TO A WET ENVIRONMENT SHALL BE MADE LIQUID TIGHT. (e.g. IN FLOOR, ETC.) THE ELECTRICAL CONTRACTOR SHALL INSTALL, PROVIDE POWER TO AND CONNECT THE FOLLOWING IF REQUIRED: THE "X–RAY IN USE" WARNING SIGN; THE 120VAC, 15AMP RECEPTACLE; THE DOOR INTERLOCK SWITCH; THE EMERGENCY OFF SWITCH; AND THE 120VAC, DUPLEX OUTLETS FOR SERVICE AND HOUSEKEEPING.

Hologic, Inc.,
35 Crosby Drive,
Bedford, MA 01730

PROPOSED

HOLOGIC

REV. AUTHORED BY
DATE

DOCUMENT NUMBER
01730

REV. 0.1

REV. DRAFTED BY
DATE

REV. RELEASE DATE

SIZE
B

ARCH

THIS DOCUMENT CONTAINS PROPRIETARY DATA OF HOLOGIC, INC. AND SHALL NOT BE USED FOR PURPOSES OTHER THAN THOSE AGREED UPON BETWEEN HOLOGIC AND ITS CUSTOMER. THIS DRAWING IS NOT TO BE USED FOR CONSTRUCTION PURPOSES.

BARTLETT REGIONAL HOSP.

FINAL ROOM PLAN

JUNEAU, AK

THESE DRAWINGS ARE FOR REVIEWING PURPOSES ONLY

DATE:
04–05–16

SCALE:
3/8"=1'–0"

DRAWN BY:
GRF

PURCHASE ORDER:

PROJECT NO:
16376F

SHEET NO:
3.3

GENERAL NOTES

THE DRAWINGS AND SPECIFICATIONS CONTAINED IN THIS PACKAGE ARE DESIGNED TO CONFORM TO STRUCTURAL FEATURES AND EQUIPMENT REQUIREMENTS PRESENTED AT THE TIME OF THEIR PREPARATION. HOWEVER, SINCE THESE FACTORS ARE SUBJECT TO DESIGN MODIFICATIONS, THE DRAWINGS ARE NOT TO BE USED AS CONSTRUCTION DOCUMENTS. CONSTRUCTION PLANS ARE THE RESPONSIBILITY OF THE CUSTOMER'S ARCHITECT OR ENGINEER, WHO SHALL SEE THAT ALL APPLICABLE CODES AND REGULATIONS ARE COMPLIED WITH. ANY CHANGES MUST BE BROUGHT TO THE ATTENTION OF THE HOLOGIC PLANNING OFFICE OR THE OFFICE OF THE MANUFACTURER'S REPRESENTATIVE SUPERVISING THE PRE-INSTALLATION WORK SITE. ALL FINAL DRAWINGS MUST BE SUBMITTED TO HOLOGIC FOR REVIEW.

ALL DIMENSIONS ARE GIVEN FROM FINISHED SURFACES. WHERE DIMENSIONS ARE NOT GIVEN, FIELD MEASUREMENTS SHOULD BE TAKEN. ALL EXISTING CONDITIONS ARE TO BE VERIFIED BY THE CUSTOMER'S CONTRACTOR, AND ANY DISCREPANCIES SHOULD BE BROUGHT TO THE ATTENTION OF THE HOLOGIC PLANNING OFFICE.

EQUIPMENT PURCHASER SHALL, AT HIS EXPENSE, PROVIDE THE NECESSARY LABOR AND MATERIAL FOR ANY PLUMBING, CARPENTRY, STRUCTURAL AND ELECTRICAL WORK SUCH AS REINFORCEMENT, CONDUITS, WIREWAYS, SWITCHES, ETC., WHICH MAY BE REQUIRED FOR THE INSTALLATION OF X-RAY ROOM EQUIPMENT. HOLOGIC ASSUMES NO RESPONSIBILITY FOR ANY CONSTRUCTION COSTS WHETHER OR NOT RELATED TO THE INSTALLATION OF OUR EQUIPMENT. NO WORK MAY BE PERFORMED OR MATERIALS FURNISHED AT OUR EXPENSE, UNLESS AUTHORIZED BY A SIGNED, FORMAL HOLOGIC PURCHASE ORDER

THE CUSTOMER, AT HIS EXPENSE, SHALL EMPLOY A REGISTERED PHYSICIST TO SPECIFY RADIATION PROTECTION.

THE CUSTOMER'S ARCHITECT SHALL VERIFY THAT ALL DOOR AND PASSAGE SIZES ARE ADEQUATE FOR DELIVERY OF EQUIPMENT FROM EXTERIOR, INTO THE ROOM. IF PROFESSIONAL RIGGING SERVICES ARE REQUIRED, THESE SHALL BE PROVIDED AT THE CUSTOMER'S EXPENSE.

ALL NEW FINISHED FLOOR SURFACES SHOULD BE LEVEL. THE FLOOR AREA UNDER THE EQUIPMENT BASES, EXTENDING 3'-0" IN ALL DIRECTIONS AROUND EACH BASE, MUST BE LEVELLED, USING A CARPENTER'S LEVEL OF APPROPRIATE LENGTH, TO WITHIN 1/16".

THE CUSTOMER'S CONTRACTOR SHALL OBTAIN ALL PERMITS NECESSARY FOR CONSTRUCTION.

THE DELIVERY AND INSTALLATION OF RADIOLOGY EQUIPMENT, SHALL NOT COMMENCE UNTIL HOLOGIC HAS RECEIVED NOTIFICATION BY THE CUSTOMER OR HIS ARCHITECT, THAT THE CONSTRUCTION PHASE HAS BEEN COMPLETED AND THE ENVIRONMENT IS CLEAN AND DUST FREE.

ALL BUILDING UTILITIES SERVICING THE SITE SHALL BE OPERATIONAL.

THE CUSTOMER AND A HOLOGIC REPRESENTATIVE SHALL INSPECT AND ACCEPT THE ROOM BEFORE WORK BEGINS ON THE INSTALLATION OF EQUIPMENT. IF ROOM PREPARATION IS INCOMPLETE OR INCORRECT, THE CUSTOMER'S CONTRACTOR IS RESPONSIBLE FOR THE COST OF CORRECTING ANY PROBLEMS.

AS THIS DRAWING CONTAINS CONFIDENTIAL AND PROPRIETARY INFORMATION, THE CUSTOMER, IN ACCEPTING THIS DRAWING, AGREES NOT TO REPRODUCE, OR DISTRIBUTE IT TO OTHERS, OR TO USE THE INFORMATION CONTAINED THEREIN, IN ANY MANNER DETRIMENTAL TO HOLOGIC SYSTEMS DIVISION.

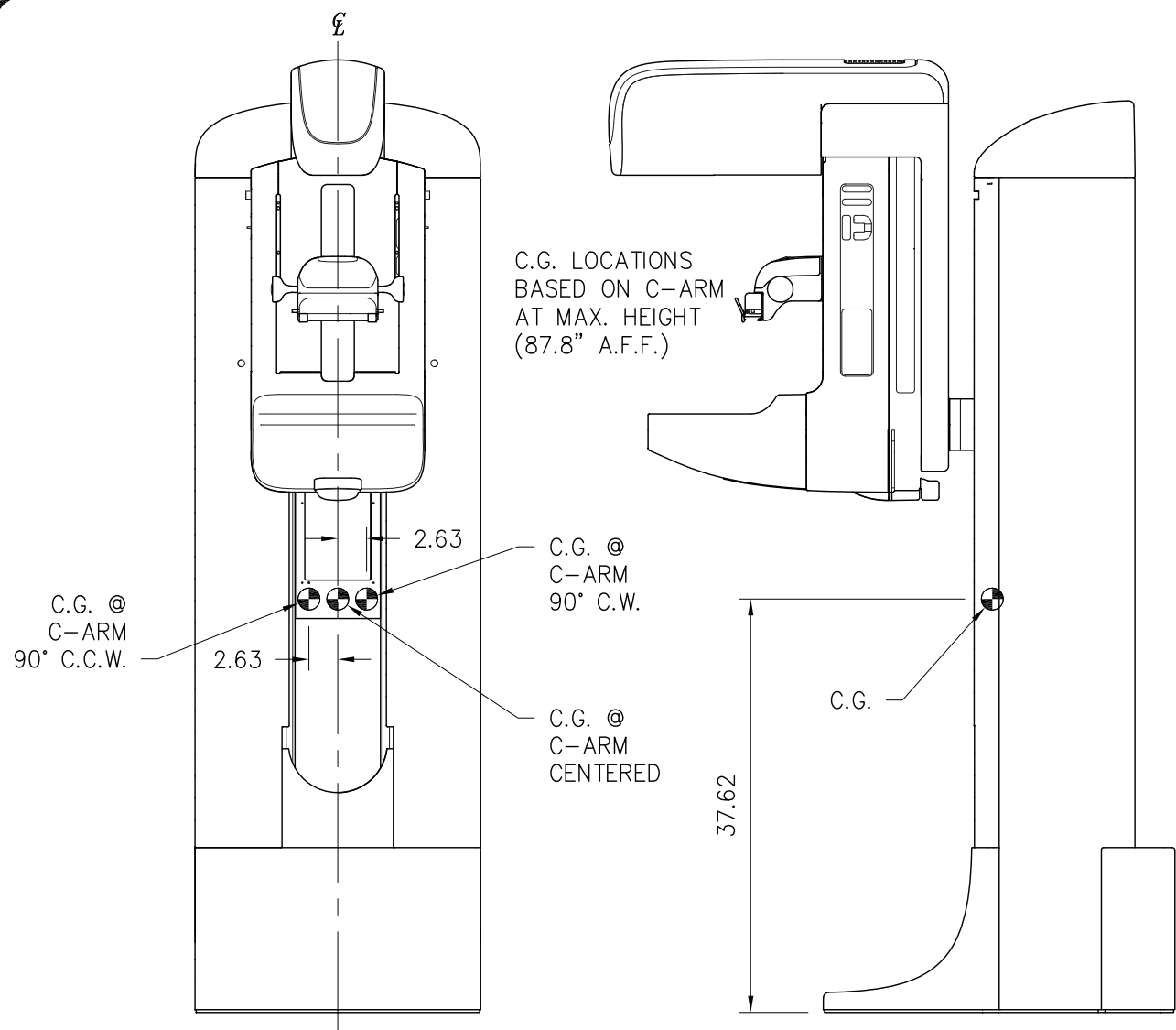
ARCHITECTURAL NOTES

1. THIS SET OF DRAWINGS ARE FOR THE PURPOSE OF A LAYOUT PLAN ONLY – NOT FOR CONSTRUCTION. THESE DRAWINGS ARE FOR THE BENEFIT OF PURCHASER'S ARCHITECT OF CHOICE. THE ARCHITECT AND BUILDING CONTRACTORS SHALL CONVERT THIS LAYOUT INTO WORKING AND CONSTRUCTION DRAWINGS OBSERVING ALL PREVAILING CODES. THESE DRAWINGS ARE INTENDED TO PROVIDE THE CONSTRUCTION PARTICIPANTS WITH SPECIFICATION AND CONCEPTUAL INFORMATION ONLY. EVERY EFFORT HAS BEEN MADE TO CONFORM DETAILS TO THE ACTUAL EQUIPMENT EXPECTED TO BE INSTALLED. THIS FLOOR PLAN WAS SCALED FROM PRINTS DRAWN BY OTHERS. ALL CONSTRUCTION PARTICIPANTS SHALL VERIFY AND ADJUST DIMENSIONS. CRITICAL DIMENSIONAL RELATIONSHIPS HAVE BEEN SUPPLIED. IT IS THE RESPONSIBILITY OF ALL CONSTRUCTION PARTICIPANTS TO ADHERE TO THESE DISTANCES. ALL DIMENSIONS ARE FROM FINISHED SURFACES UNLESS OTHERWISE NOTED. ARCHITECT SHALL VERIFY THAT ALL DOOR AND PASSAGEWAY SIZES ARE ADEQUATE FOR TRANSPORTING EQUIPMENT FROM EXTERIOR OF BUILDING INTO RESPECTIVE ROOMS. RECOMMEND COVERING OR REMOVING THRESHOLDS. THE EQUIPMENT REPRESENTATIVES OR THEIR DESIGNER ARE NOT RESPONSIBLE OR LIABLE FOR ANY ERRORS OR OMISSIONS. THOSE MAKING USE OF OR RELYING ON THIS MATERIAL ASSUMES ALL RISKS AND LIABILITY ARISING FROM SUCH USE OR RELIANCE. ALL CONSTRUCTION SHALL COMPLY WITH BUILDING CODES AND REGULATIONS THAT HAVE JURISDICTION.
2. ALL SUPPLY DIFFUSERS SHALL NOT CAUSE DIRECT AIR CURRENTS ON PATIENTS OR OPERATORS. RECOMMEND 2' x 4' LAY-IN CEILING PANELS OF MATERIAL ACCEPTABLE TO CUSTOMER AND APPROVED BY PREVAILING CODES. LIGHTING FIXTURES, VENTS, ETC. TO BE FLUSH WITH FINISHED CEILING. DIMMERS SHOULD BE USED TO CONTROL LIGHT LEVELS, ESPECIALLY IN CONTROL AND EXAM AREAS. LOCATE DIMMERS CONVENIENT TO CONTROL AREA.
3. ARCHITECT AND ENGINEERS SHALL USE EXISTING ELECTRICAL AND STRUCTURAL ITEMS WHEN FEASIBLE.
4. ALL WORK EXCEPT INSTALLATION OF DIAGNOSTIC IMAGING EQUIPMENT IS TO BE DONE BY OTHERS THAN THE EQUIPMENT REPRESENTATIVES.
5. SOME CONVENIENCES MAY BE REQUIRED BY CODE OR DESIRED BY CUSTOMER IN EACH RESPECTIVE ROOM (i.e., CASSETTE STORAGE, ILLUMINATORS, CABINETS, SINKS AND COUNTER SPACE). PLEASE CONSULT WITH CUSTOMER WITH REGARDS TO DESIRED CONVENIENCES.
6. ELECTRICAL POWER FOR X-RAY EQUIPMENT REQUIRES HIGH CURRENTS FOR SHORT DURATION WHILE THE SUPPLY VOLTAGE MUST REMAIN STABLE.
REFER TO ELECTRICAL NOTES. GROUNDING MUST CONFORM TO THE CURRENT REQUIREMENTS FOR ELECTRICALLY SUSCEPTIBLE PATIENT AREAS.
7. NO ATTENTION HAS BEEN GIVEN TO SPECIFIC PLUMBING OR HVAC CONSIDERATIONS AFFECTED BY THE SCOPE OF THIS WORK. ENGINEERING DRAWINGS TO BE DONE BY OTHERS. ELECTRICAL AND MECHANICAL DESIGNERS SHALL BE REQUIRED TO REVIEW THESE DRAWINGS TO HELP THEM GAIN AN UNDERSTANDING OF THE CONCEPT OF THIS WORK AND TO HELP MINIMIZE CONFLICTING CONSTRUCTION EFFORTS. NO ATTENTION HAS BEEN GIVEN TO SPECIFIC BUILDING STRUCTURAL INTEGRITY. A PROFESSIONAL STRUCTURAL ENGINEER SHALL INSPECT FIELD CONDITIONS TO ENSURE THAT THE FACILITY SUPPORT STRUCTURE (e.g. WALLS, FLOORS, CEILINGS) CAN PROVIDE ADEQUATE SUPPORT FOR THE DIAGNOSTIC IMAGING EQUIPMENT DESCRIBED IN THE EQUIPMENT SCHEDULE. NO ATTENTION HAS BEEN GIVEN TO SPECIFIC SEISMIC ANCHORAGE CONSIDERATIONS AFFECTED BY THE SCOPE OF THIS WORK. ALL EXPENSES ASSOCIATED WITH SEISMIC TESTING AND COMPLIANCE SHALL BE THE RESPONSIBILITY OF THE CUSTOMER (END USER) OR THEIR RESPECTIVE CONTRACTORS OF CHOICE. IT IS STRONGLY RECOMMENDED THAT THE CUSTOMER CONSULTS WITH A PROFESSIONAL STRUCTURAL ENGINEER FAMILIAR WITH ALL PREVAILING SEISMIC REQUIREMENTS. ENGINEERING DRAWINGS BY OTHERS.
8. THE EQUIPMENT REPRESENTATIVES PRIOR TO CHANGES MUST APPROVE DEVIATION FROM THESE PLANS IN WRITING.

DATE: 04-05-16 SCALE: 3/8" = 1'-0" DRAWN BY: GRF		BARTLETT REGIONAL HOSP. FINAL ROOM PLAN JUNEAU, AK		THESE DRAWINGS ARE FOR REVIEWING PURPOSES ONLY	
PROJECT NO: 16376F		SHEET NO: 4.0			

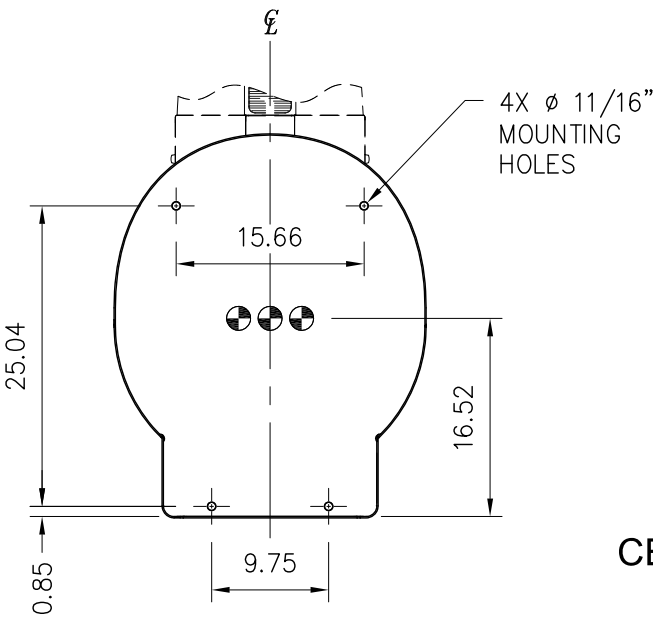
HOLOGIC Hologic, Inc., 35 Crosby Drive, Bedford, MA 01730				
REV AUTHORED BY	DATE	DOCUMENT NUMBER	REV.	
REV DRAFTED BY	DATE		0.1	
REV RELEASE DATE			SIZE	B ARCH

THIS DOCUMENT CONTAINS PROPRIETARY DATA OF HOLOGIC, INC. AND SHALL NOT BE USED FOR PURPOSES OTHER THAN THOSE AGREED UPON BETWEEN HOLOGIC AND ITS CUSTOMER. THIS DRAWING IS NOT TO BE USED FOR CONSTRUCTION PURPOSES.



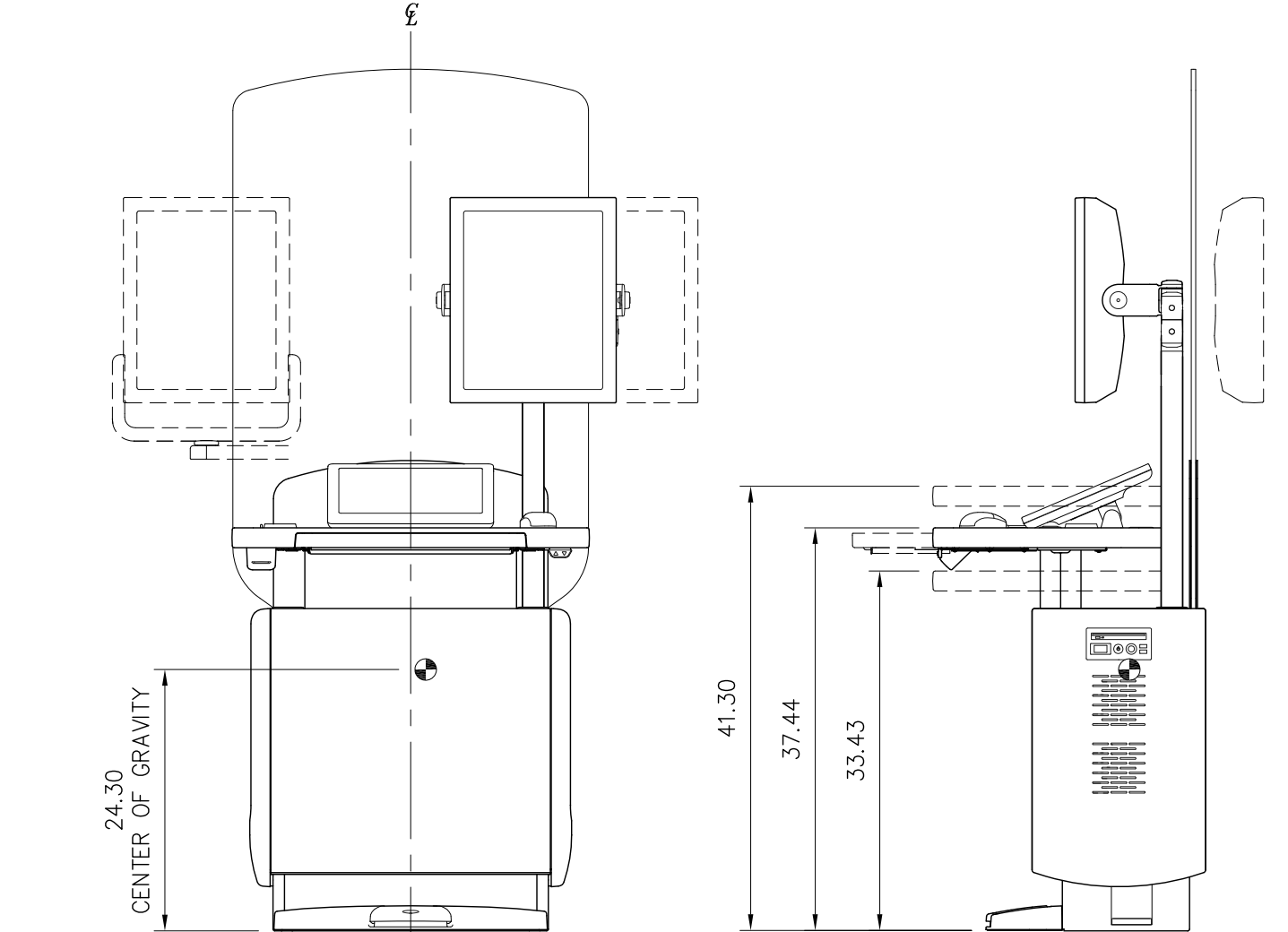
GANTRY FRONT VIEW

GANTRY SIDE VIEW



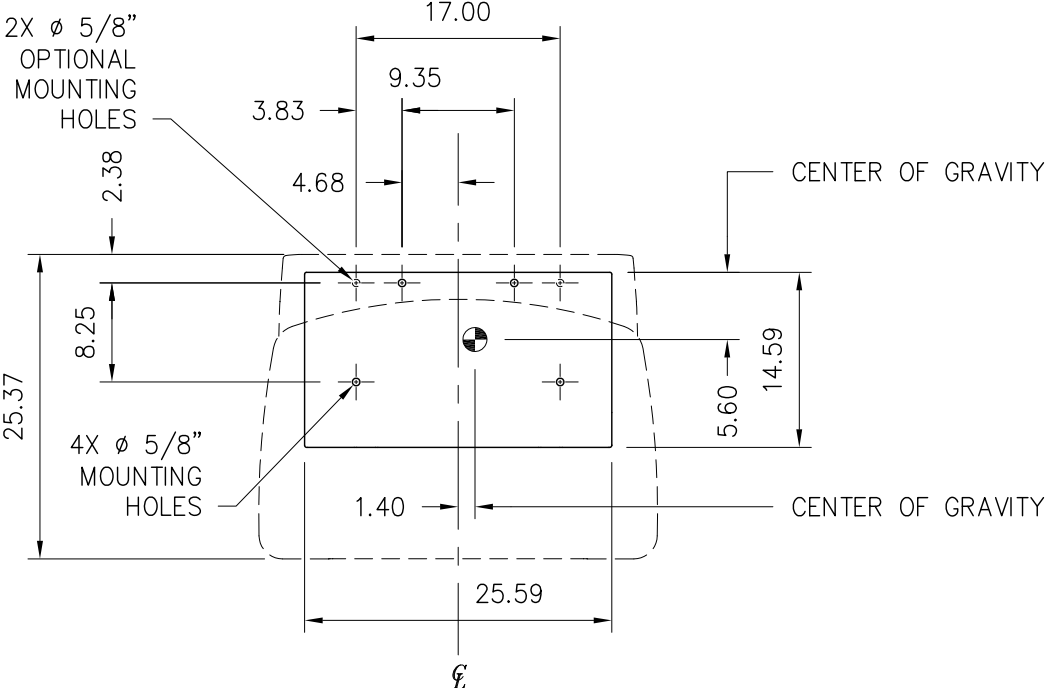
GANTRY BASEPLATE

EQUIPMENT DETAILS
CENTER OF GRAVITY LOCATIONS,
BASEPLATE DETAILS



AWS CONSOLE FRONT VIEW

AWS CONSOLE SIDE VIEW



AWS CONSOLE BASEPLATE PLAN VIEW

Hologic, Inc., PROPOSED 35 Crosby Drive, Bedford, MA 01730		REV. 0.1 DOCUMENT NUMBER
REV. AUTHORED BY DATE	REV. DRAFTED BY DATE	REV. RELEASE DATE SIZE B ARCH
THIS DOCUMENT CONTAINS PROPRIETARY DATA OF HOLOGIC, INC. AND SHALL NOT BE USED FOR PURPOSES OTHER THAN THOSE AGREED UPON BETWEEN HOLOGIC AND ITS CUSTOMER. THIS DRAWING IS NOT TO BE USED FOR CONSTRUCTION PURPOSES.		
BARTLETT REGIONAL HOSP. FINAL ROOM PLAN JUNEAU, AK THESE DRAWINGS ARE FOR REVIEWING PURPOSES ONLY		
DATE: 04-05-16 SCALE: 3/4"=1'-0" PROJECT NO: 16376F	DRAWN BY: GRF PURCHASE ORDER:	SHEET NO: 4.1