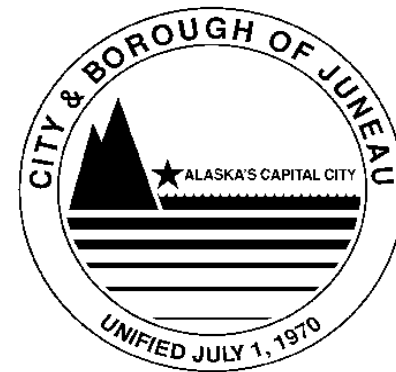


WEST DOUGLAS PIONEER ROAD

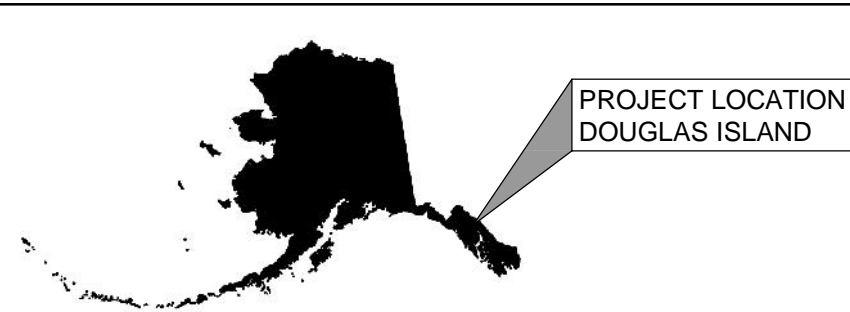
VOLUME II of II

Contract No. BE17-039

File No. 1708

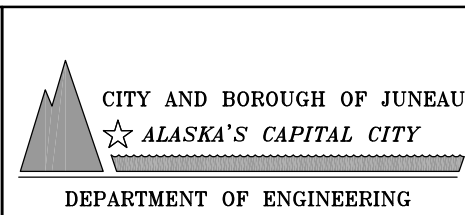
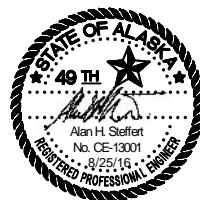
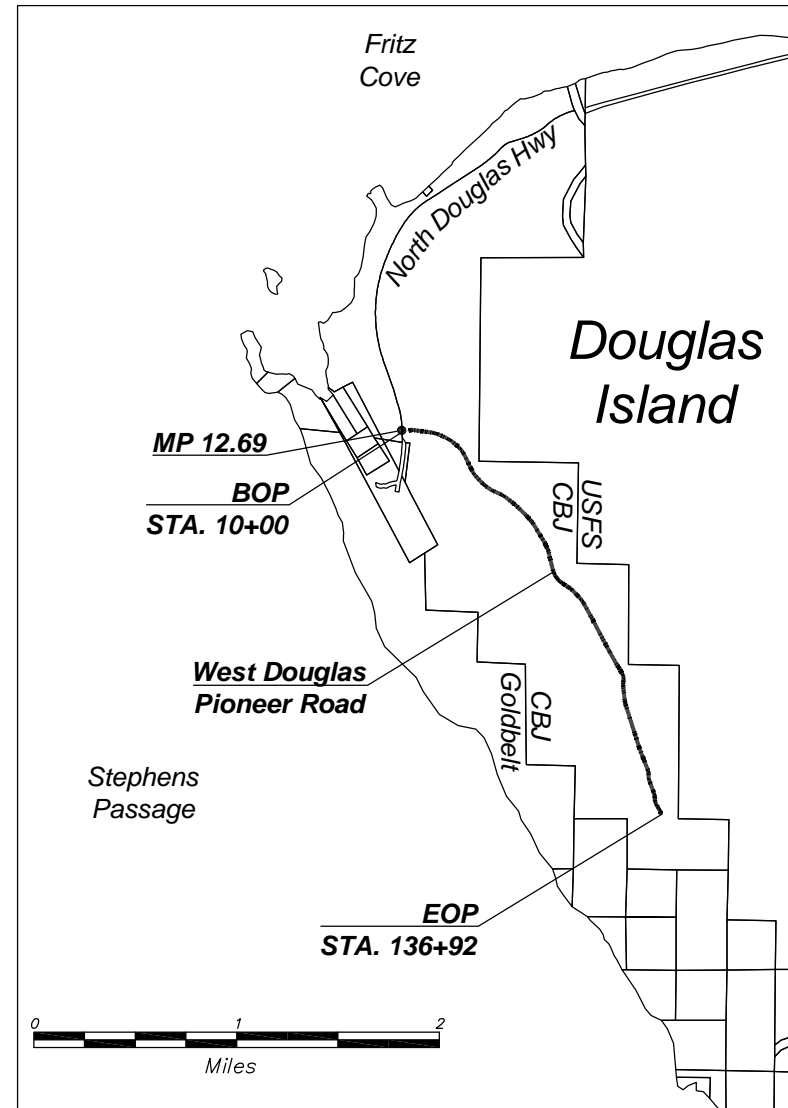


ENGINEERING DEPARTMENT



DRAWING INDEX

SHEET NO.	SHEET TITLE
1.	LOCATION MAP & DRAWING INDEX
2.	PLAN & PROFILE - BOP TO 37+00
3.	PLAN & PROFILE - 37+00 TO 64+00
4.	PLAN & PROFILE - 64+00 TO 91+00
5.	PLAN & PROFILE - 91+00 TO 118+00
6.	PLAN & PROFILE - 118+00 TO EOP
7.	ROAD TYPICAL SECTIONS AND NOTES
8.	TURNOUT AND WIDENED FILL DETAILS
9.	SOFT GROUND CONSTRUCTION DETAILS
10.	PARKING AREA & ACCESS DRIVEWAY - PLAN AND NOTES
11.	PARKING AREA & ACCESS DRIVEWAY - TYPICAL SECTIONS
12.	GATE AND FENCE DETAILS
13.	NON-FISH STREAM CULVERT DETAILS
14.	CULVERT DETAILS
15.	FISH PASSAGE CULVERT: STA 29+00 - STREAM PLAN AND PROFILE
16.	FISH PASSAGE CULVERT: STA 29+00 - SECTIONS AND DETAILS
17.	MAJOR STREAM CULVERT: STA 59+50 - STREAM PLAN AND PROFILE
18.	MAJOR STREAM CULVERT: STA 59+50 - SECTIONS AND DETAILS
19.	BRIDGE CROSSING: STA 97+00 - STREAM AND ROAD PLAN AND PROFILE
20.	BRIDGE CROSSING: STA 97+00 - STREAM SECTION
21.	CULVERT SUMMARY TABLES
22.	CULVERT SUMMARY TABLES
23.	BASIS OF ESTIMATE



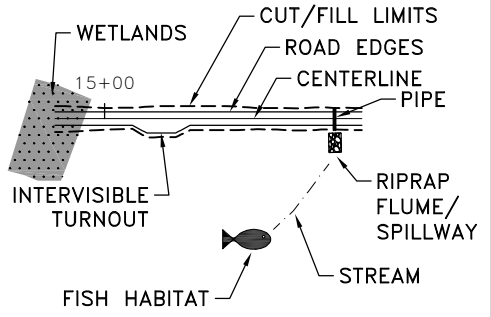
WEST DOUGLAS PIONEER ROAD
CBJ CONTRACT BE17-039

LOCATION MAP AND DRAWING INDEX

SHEET NO.
1 / 23



LEGEND

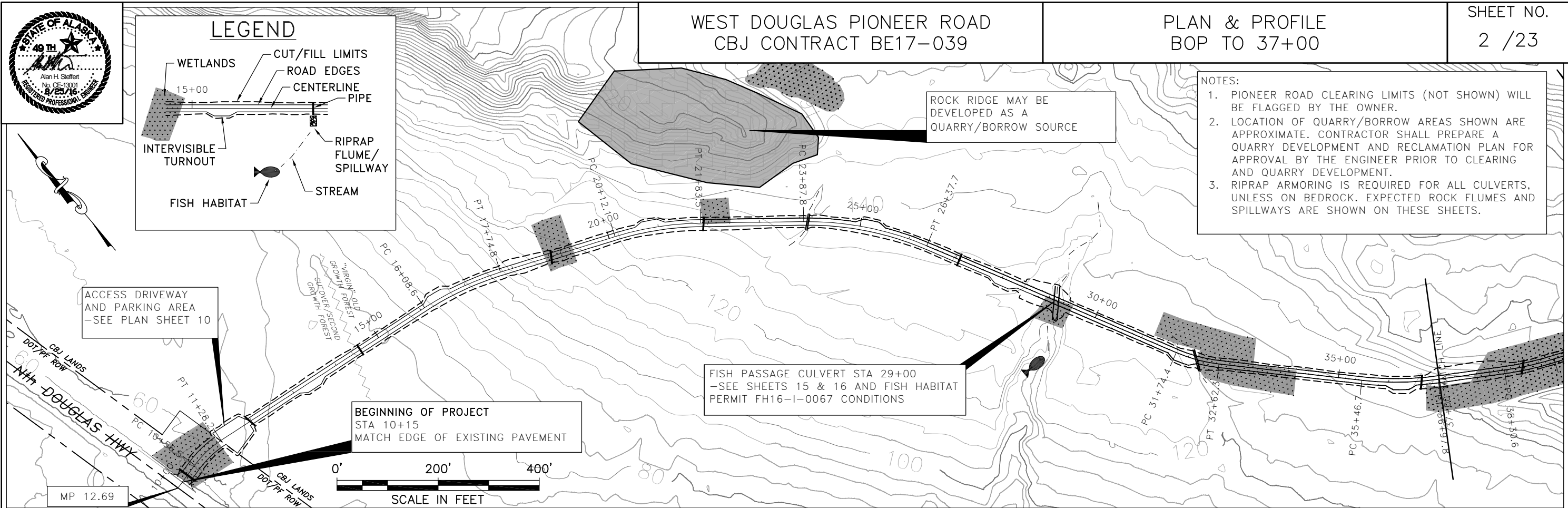


**WEST DOUGLAS PIONEER ROAD
CBJ CONTRACT BE17-039**

**PLAN & PROFILE
BOP TO 37+00**

SHEET NO.
2 / 23

- NOTES:**
1. PIONEER ROAD CLEARING LIMITS (NOT SHOWN) WILL BE FLAGGED BY THE OWNER.
 2. LOCATION OF QUARRY/BORROW AREAS SHOWN ARE APPROXIMATE. CONTRACTOR SHALL PREPARE A QUARRY DEVELOPMENT AND RECLAMATION PLAN FOR APPROVAL BY THE ENGINEER PRIOR TO CLEARING AND QUARRY DEVELOPMENT.
 3. RIPRAP ARMORING IS REQUIRED FOR ALL CULVERTS, UNLESS ON BEDROCK. EXPECTED ROCK FLUMES AND SPILLWAYS ARE SHOWN ON THESE SHEETS.

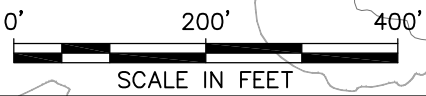


ACCESS DRIVEWAY AND PARKING AREA
-SEE PLAN SHEET 10

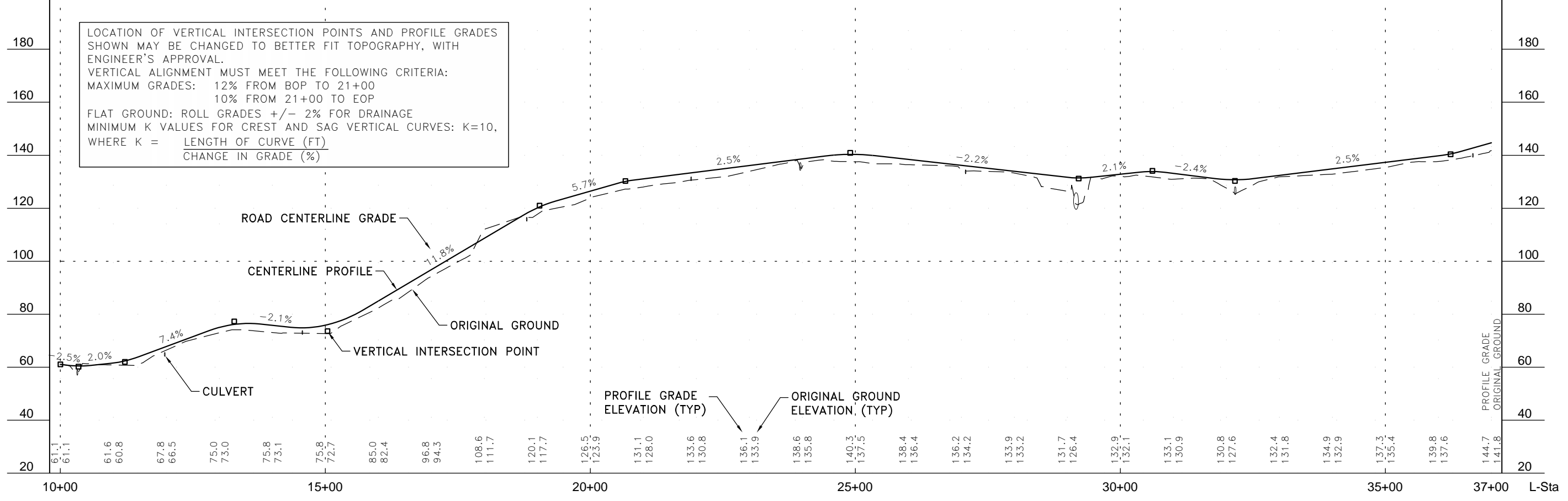
BEGINNING OF PROJECT
STA 10+15
MATCH EDGE OF EXISTING PAVEMENT

FISH PASSAGE CULVERT STA 29+00
-SEE SHEETS 15 & 16 AND FISH HABITAT PERMIT FH16-I-0067 CONDITIONS

ROCK RIDGE MAY BE DEVELOPED AS A QUARRY/BORROW SOURCE



LOCATION OF VERTICAL INTERSECTION POINTS AND PROFILE GRADES SHOWN MAY BE CHANGED TO BETTER FIT TOPOGRAPHY, WITH ENGINEER'S APPROVAL.
VERTICAL ALIGNMENT MUST MEET THE FOLLOWING CRITERIA:
MAXIMUM GRADES: 12% FROM BOP TO 21+00
10% FROM 21+00 TO EOP
FLAT GROUND: ROLL GRADES +/- 2% FOR DRAINAGE
MINIMUM K VALUES FOR CREST AND SAG VERTICAL CURVES: K=10,
WHERE $K = \frac{\text{LENGTH OF CURVE (FT)}}{\text{CHANGE IN GRADE (\%)}}$

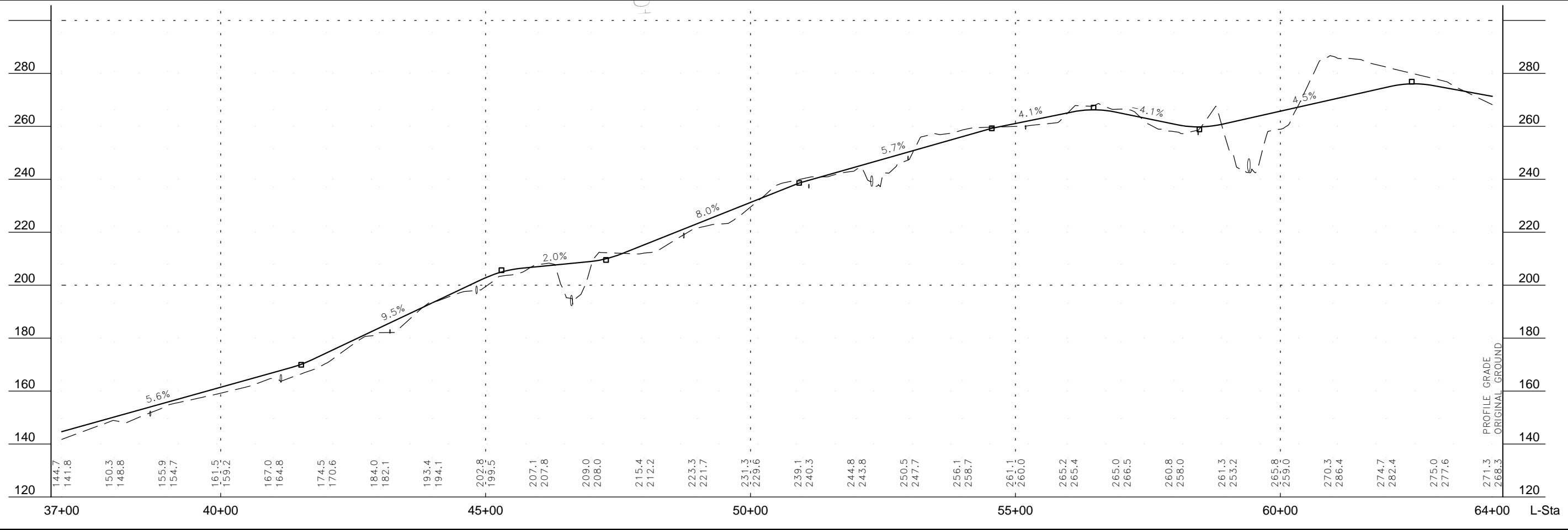
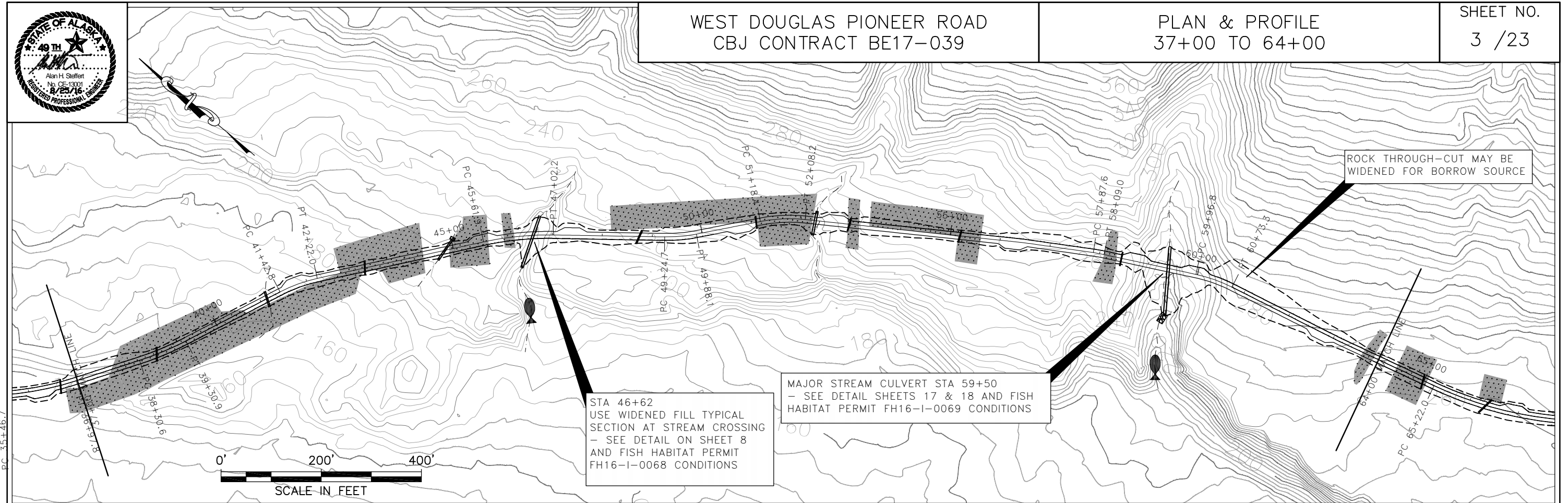




WEST DOUGLAS PIONEER ROAD
CBJ CONTRACT BE17-039

PLAN & PROFILE
37+00 TO 64+00

SHEET NO.
3 / 23

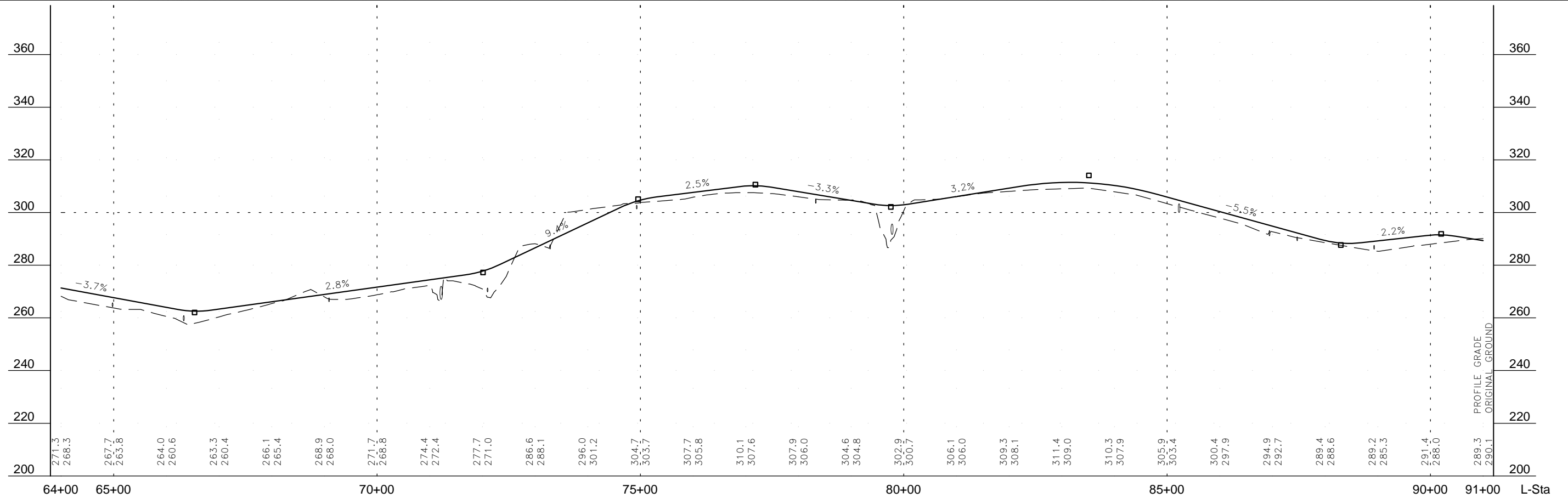
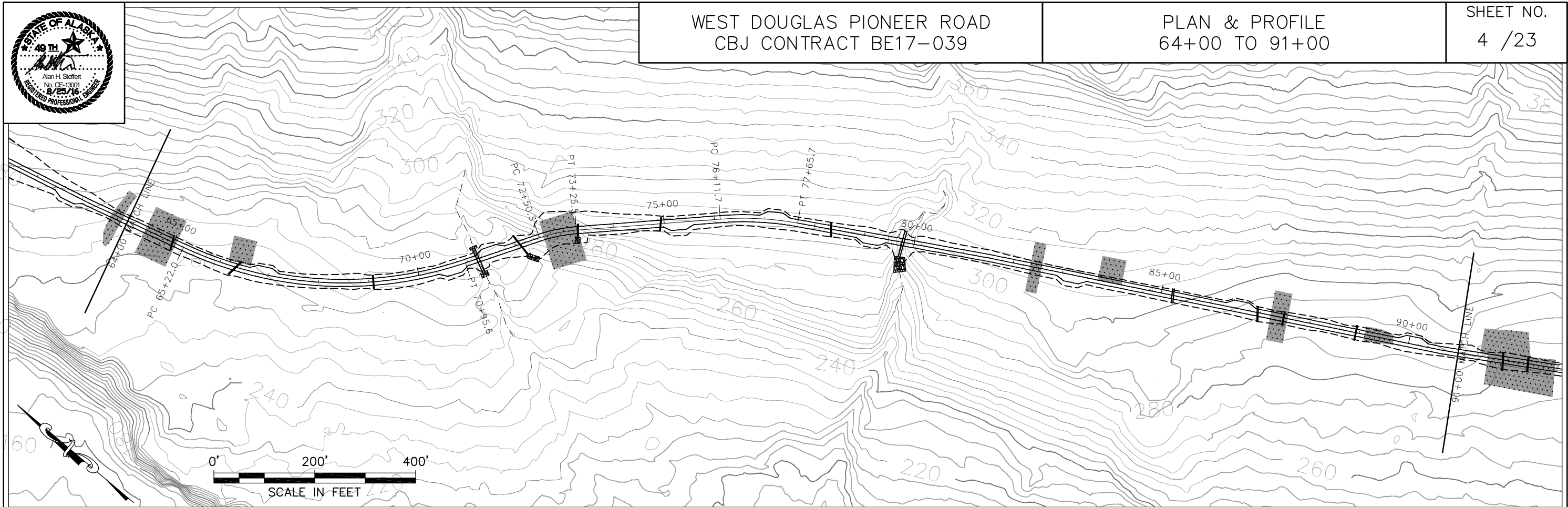




WEST DOUGLAS PIONEER ROAD
CBJ CONTRACT BE17-039

PLAN & PROFILE
64+00 TO 91+00

SHEET NO.
4 / 23



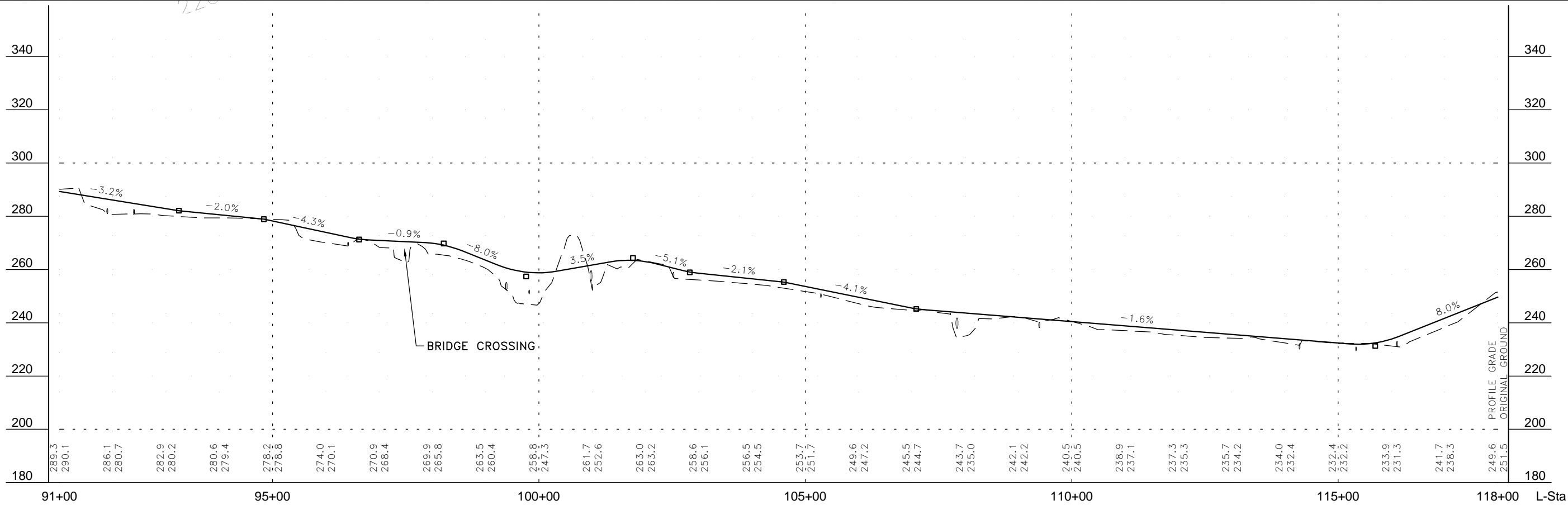
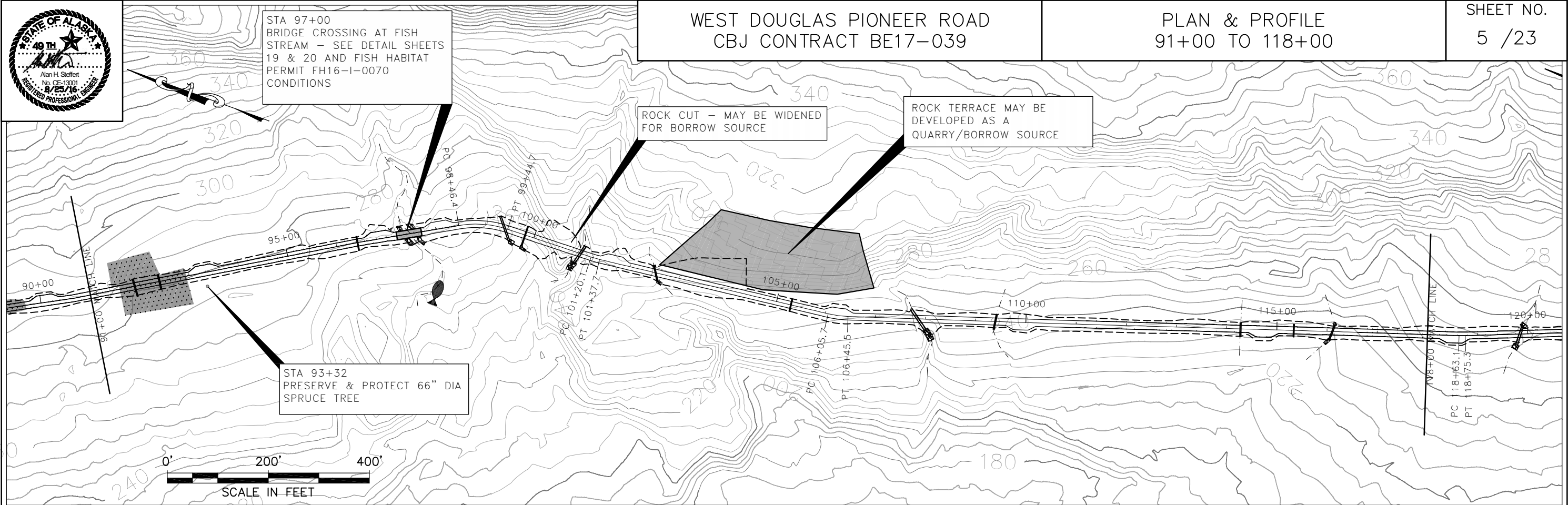


STA 97+00
BRIDGE CROSSING AT FISH
STREAM - SEE DETAIL SHEETS
19 & 20 AND FISH HABITAT
PERMIT FH16-1-0070
CONDITIONS

WEST DOUGLAS PIONEER ROAD CBJ CONTRACT BE17-039

PLAN & PROFILE 91+00 TO 118+00

SHEET NO.
5 / 23





WEST DOUGLAS PIONEER ROAD
CBJ CONTRACT BE17-039

PLAN & PROFILE
118+00 TO EOP

SHEET NO.
6 /23

