



ADDENDUM TO THE CONTRACT

for the

GLACIER FIRE STATION KITCHEN AND CLASSROOM RENOVATION

Contract No. E16-181

ADDENDUM NO.: ONE

CURRENT DEADLINE FOR BIDS:
May 19, 2016

PREVIOUS ADDENDA: NONE

ISSUED BY: City and Borough of Juneau
ENGINEERING DEPARTMENT
155 South Seward Street
Juneau, Alaska 99801

PREVIOUS DEADLINE FOR BIDS:
May 12, 2016

DATE ADDENDUM ISSUED: May 6, 2016

The following items of the contract are modified as herein indicated. All other items remain the same. This is a faxed addendum. A confirming copy will not be mailed to you. This addendum has been issued and is posted online. Please refer to the CBJ Engineering Contracts Division webpage at: <http://www.juneau.org/engineering ftp/contracts/Contracts.php>

GENERAL INFORMATION & CLARIFICATIONS

1. **Electrical:** The Wiremold shown on Sheet E3, Note 12, is for cable management only, as requested by the Fire Department. No devices are to be relocated or installed, all existing to remain.
2. **Electrical:** The switch shown as existing to remain by the southeast exterior door on both Sheets E2 and E3 is a single-pole device and is to remain as shown.

PROJECT MANUAL:

Item No. 1 SECTION 00030 - NOTICE INVITING BIDS. DEADLINE FOR BIDS.

Change the date of the Deadline for Bids **from** May 12, 2016, **to** May 19, 2016. The time remains the same.

Item No. 2 SECTION 064116 – PLASTIC LAMINATE-FACED ARCHITECTURAL CABINETS. **Add** the attached Section 064116 – Plastic Laminate-Faced Architectural Cabinets, labeled Addendum No. 1.

DRAWINGS:

- Item No. 3 Sheet A1 – DEMO FLOOR PLAN PRODUCT SPECIFICATIONS. **Delete** in its entirety, and **replace** with the attached Sheet A1 – DEMO FLOOR PLAN PRODUCT SPECIFICATIONS, labeled Addendum No. 1.
- Item No. 4 Sheet A2 – NEW FLOOR PLAN DETAILS. **Delete** in its entirety, and **replace** with the attached Sheet A2 – NEW FLOOR PLAN DETAILS, labeled Addendum No. 2.
- Item No. 5 Sheet S1 – STRUCTURAL DETAILS, ALTERNATE NO. 1. **Delete** in its entirety, and **replace** with the attached Sheet S1 – STRUCTURAL DETAILS, ALTERNATE NO. 1, labeled Addendum No. 1.
- Item No. 6 Sheet M1 – LEGEND, NOTES, ABBREVIATIONS, SCHEDULES. **Delete** in its entirety, and **replace** with the attached Sheet M1 – LEGEND, NOTES, ABBREVIATIONS, SHCEDULES, labeled Addendum No. 1.
- Item No. 7 Sheet M2 – PLUMBING PLANS: DEMOLITION & NEW WORK; DETAILS. **Delete** in its entirety, and **replace** with the attached Sheet M2 – PLUMBING PLANS: DEMOLITION & NEW WORK; DETAILS, labeled Addendum No. 1.
- Item No. 8 Sheet E2 – POWER/SIGNAL AND LIGHTING DEMOLITION PLANS & NOTES. **Delete** in its entirety, and **replace** with the attached Sheet E2 – POWER/SIGNAL AND LIGHTING DEMOLITION PLANS & NOTES, labeled Addendum No. 1.

By: 
Fu Greg Smith,
Contract Administrator

Total number of pages contained within this Addendum: 14

SECTION 064116 – PLASTIC-LAMINATE-FACED ARCHITECTURAL CABINETS

PART 1 - GENERAL

1.1 RELATED DOCUMENTS

- A. Drawings and general provisions of the Contract, including General and Supplementary Conditions and Division 01 Specification Sections, apply to this Section.

1.2 SUMMARY

- A. Section Includes:
 - 1. Plastic-laminate-faced architectural cabinets.

1.3 ACTION SUBMITTALS

- A. Product Data: For high-pressure decorative laminate, adhesive for bonding plastic laminate, and cabinet hardware and accessories.
- B. Shop Drawings: Show location of each item, dimensioned plans and elevations, large-scale details, attachment devices, and other components.
 - 1. Show details full size.
 - 2. Show locations and sizes of furring, blocking, and hanging strips, including concealed blocking and reinforcement specified in other Sections.
 - 3. Show locations and sizes of cutouts and holes for plumbing fixtures, faucets, electrical switches and outlets and other items installed in architectural plastic-laminate cabinets.
- C. Samples for Initial Selection:
 - 1. Plastic laminates.
 - 2. PVC edge material.
 - 3. Thermoset decorative panels.
- D. Samples for Verification:
 - 1. Plastic laminates, for each type, color, pattern, and surface finish, with one sample applied to core material and specified edge material applied to one edge.
 - 2. Thermoset decorative panels, for each color, pattern, and surface finish, with edge banding on one edge.
 - 3. Exposed cabinet hardware and accessories, one unit for each type and finish.

1.4 INFORMATIONAL SUBMITTALS

- A. Woodwork Quality Standard Compliance Certificates: AWI Quality Certification Program certificates.

SECTION 064116 – PLASTIC-LAMINATE-FACED ARCHITECTURAL CABINETS

1.5 QUALITY ASSURANCE

- A. Fabricator Qualifications: Shop that employs skilled workers who custom fabricate products similar to those required for this Project and whose products have a record of successful in-service performance. Shop is a certified participant in AWI's Quality Certification Program.
- B. Installer Qualifications: See "Product Specifications" on Sheet A1.

1.6 DELIVERY, STORAGE, AND HANDLING

- A. Do not deliver cabinets until painting and similar operations that could damage woodwork have been completed in installation areas. If cabinets must be stored in other than installation areas, store only in areas where environmental conditions comply with requirements specified in "Field Conditions" Article.

1.7 FIELD CONDITIONS

- A. Field Measurements: Where cabinets are indicated to fit to other construction, verify dimensions of other construction by field measurements before fabrication, and indicate measurements on Shop Drawings.
 - 1. Locate concealed framing, blocking, and reinforcements that support cabinets by field measurements before being enclosed, and indicate measurements on Shop Drawings.
- B. Established Dimensions: Where cabinets are indicated to fit to other construction, establish dimensions for areas where cabinets are to fit. Provide allowance for trimming at site, and coordinate construction to ensure that actual dimensions correspond to established dimensions.

1.8 COORDINATION

- A. Coordinate sizes and locations of framing, blocking, furring, reinforcements, and other related units of Work specified in other Sections to ensure that cabinets can be supported and installed as indicated.

PART 2 - PRODUCTS

2.1 PLASTIC-LAMINATE-FACED ARCHITECTURAL CABINETS

- A. Quality Standard: Unless otherwise indicated, comply with the "Architectural Woodwork Standards" for grades of architectural plastic-laminate cabinets indicated for construction, finishes, installation, and other requirements.
 - 1. Provide labels and certificates from AWI certification program indicating that woodwork complies with requirements of grades specified.
- B. Grade: Custom.

SECTION 064116 – PLASTIC-LAMINATE-FACED ARCHITECTURAL CABINETS

- C. Type of Construction: Frameless.
- D. Cabinet, Door, and Drawer Front Interface Style: Flush overlay.
- E. High-Pressure Decorative Laminate: NEMA LD 3, grades as indicated or if not indicated, as required by woodwork quality standard.
 - 1. Formica Corporation
 - 2. Wilsonart
- F. Laminate Cladding for Exposed Surfaces:
 - 1. Horizontal Surfaces: HGS.
 - 2. Postformed Surfaces: HGP.
 - 3. Vertical Surfaces: HGS.
 - 4. Edges: PVC edge banding, 0.12 inch (3 mm) thick.
- G. Materials for Semiexposed Surfaces:
 - 1. Surfaces Other Than Drawer Bodies: High-pressure decorative laminate, NEMA LD 3, Grade VGS.
 - a. Edges of Plastic-Laminate Shelves: PVC edge banding, 0.12 inch (3 mm) thick, matching laminate in color, pattern, and finish.
 - b. Edges of Thermoset Decorative Panel Shelves: PVC or polyester edge banding.
 - c. For semiexposed backs of panels with exposed plastic-laminate surfaces, provide surface of high-pressure decorative laminate, NEMA LD 3.
 - 2. Drawer Sides and Backs: Hardwood plywood.
 - 3. Drawer Bottoms: Hardwood plywood.
- H. Concealed Backs of Panels with Exposed Plastic-Laminate Surfaces: High-pressure decorative laminate, NEMA LD 3, Grade BKL.
- I. Drawer Construction: Fabricate with exposed fronts fastened to subfront with mounting screws from interior of body.
 - 1. Join subfronts, backs, and sides with glued rabbeted joints supplemented by mechanical fasteners.
- J. Colors, Patterns, and Finishes: Provide materials and products that result in colors and textures of exposed laminate surfaces complying with the following requirements:
 - 1. Solid colors, matte finish.

2.2 WOOD MATERIALS

- A. Wood Products: Provide materials that comply with requirements of referenced quality standard for each type of woodwork and quality grade specified unless otherwise indicated.

SECTION 064116 – PLASTIC-LAMINATE-FACED ARCHITECTURAL CABINETS

1. Wood Moisture Content: 5 to 10 percent.
- B. Composite Wood Products:
 1. Medium-Density Fiberboard: ANSI A208.2, Grade 130.
 2. Veneer-Faced Panel Products (Hardwood Plywood): HPVA HP-1.
 3. Thermoset Decorative Panels: Particleboard or medium-density fiberboard finished with thermally fused, melamine-impregnated decorative paper and complying with requirements of NEMA LD 3, Grade VGL, for test methods 3.3, 3.4, 3.6, 3.8, and 3.10.

2.3 CABINET HARDWARE AND ACCESSORIES

- A. Frameless Concealed Hinges (European Type): BHMA A156.9, B01602, 110 degrees of opening, self-closing.
- B. Back-Mounted Pulls: BHMA A156.9, B02011.
- C. Wire Pulls: Back mounted, solid metal 5 inches long, 2-1/2 inches deep, and 5/16 inch (8 mm) in diameter.
- D. Catches: Magnetic catches, BHMA A156.9, B03141.
- E. Adjustable Shelf Standards and Supports.
- F. Shelf Rests: BHMA A156.9, B04013; metal, one-pin type with shelf hold-down clip.
- G. Drawer Slides: BHMA A156.9, B05091:
 1. Grade 1HD-100 and Grade 1HD-200: Side mounted; full-extension type; zinc-plated, steel ball-bearing slides, 75 lbf.
- H. Door and Drawer Silencers: BHMA A156.16, L03011.
- I. Exposed Hardware Finishes: For exposed hardware, provide finish that complies with BHMA A156.18 for BHMA finish number indicated.
 1. Satin Stainless Steel: BHMA 630.
- J. For concealed hardware, provide manufacturer's standard finish that complies with product class requirements in BHMA A156.9.

2.4 MISCELLANEOUS MATERIALS

- A. Furring, Blocking, Shims, and Hanging Strips: Softwood or hardwood lumber, kiln dried to less than 15 percent moisture content.
- B. Anchors: Select material, type, size, and finish required for each substrate for secure anchorage. Provide metal expansion sleeves or expansion bolts for post-installed anchors. Use nonferrous-metal or hot-dip galvanized anchors and inserts at inside face of exterior walls and at floors.

SECTION 064116 – PLASTIC-LAMINATE-FACED ARCHITECTURAL CABINETS

- C. Adhesives: Do not use adhesives that contain urea formaldehyde.
- D. Adhesive for Bonding Plastic Laminate: Contact cement.
 - 1. Adhesive for Bonding Edges: Hot-melt adhesive.

2.5 FABRICATION

- A. Fabricate cabinets to dimensions, profiles, and details indicated.
- B. Complete fabrication, including assembly and hardware application, to maximum extent possible before shipment to Project site. Disassemble components only as necessary for shipment and installation. Where necessary for fitting at site, provide ample allowance for scribing, trimming, and fitting.
 - 1. Trial fit assemblies at fabrication shop that cannot be shipped completely assembled. Install dowels, screws, bolted connectors, and other fastening devices that can be removed after trial fitting. Verify that various parts fit as intended and check measurements of assemblies against field measurements before disassembling for shipment.
- C. Shop-cut openings to maximum extent possible to receive hardware, appliances, electrical work, and similar items. Locate openings accurately and use templates or roughing-in diagrams to produce accurately sized and shaped openings. Sand edges of cutouts to remove splinters and burrs.

PART 3 - EXECUTION

3.1 PREPARATION

- A. Before installation, condition cabinets to average prevailing humidity conditions in installation areas.
- B. Before installing cabinets, examine shop-fabricated work for completion and complete work as required.

3.2 INSTALLATION

- A. Grade: Install cabinets to comply with same grade as item to be installed.
- B. Assemble cabinets and complete fabrication at Project site to the extent that it was not completed in the shop.
- C. Install cabinets level, plumb, true, and straight. Shim as required with concealed shims. Install level and plumb to a tolerance of 1/8 inch in 96 inches.

SECTION 064116 – PLASTIC-LAMINATE-FACED ARCHITECTURAL CABINETS

- D. Scribe and cut cabinets to fit adjoining work, refinish cut surfaces, and repair damaged finish at cuts.
- E. Anchor cabinets to anchors or blocking built in or directly attached to substrates. Secure with countersunk, concealed fasteners and blind nailing. Use fine finishing nails or finishing screws for exposed fastening, countersunk and filled flush with woodwork.
- F. Cabinets: Install without distortion so doors and drawers fit openings properly and are accurately aligned. Adjust hardware to center doors and drawers in openings and to provide unencumbered operation. Complete installation of hardware and accessory items as indicated.
 - 1. Install cabinets with no more than 1/8 inch in 96-inch sag, bow, or other variation from a straight line.
 - 2. Fasten wall cabinets through back, near top and bottom, and at ends not more than 16 inches o.c. with No. 10 wafer-head screws sized for not less than 1-inch penetration into wood framing, blocking, or hanging strips.

3.3 ADJUSTING AND CLEANING

- A. Repair damaged and defective cabinets, where possible, to eliminate functional and visual defects; where not possible to repair, replace woodwork. Adjust joinery for uniform appearance.
- B. Clean, lubricate, and adjust hardware.
- C. Clean cabinets on exposed and semi-exposed surfaces.

END OF SECTION 064116

PRODUCT SPECIFICATIONS

CONTRACTOR NOTES

SELECT MANUFACTURERS LISTED OR APPROVED EQUALS (BY PROJECT REPRESENTATIVE).

SHOP DRAWINGS AND MFR. SUBMITTALS REQUIRED FOR ALL PRODUCTS.

CONTRACTOR TO REVIEW ALL SUBMITTALS AND SHOP DRAWINGS FOR COMPLIANCE WITH THE DRAWINGS AND SPECIFICATIONS BEFORE ORDERING MATERIALS.

FOLDING PARTITION:

"MODERNFOLD, INC., SOUNDMASTER #8 ACCORDION FOLDING PARTITION", MANUAL OPERATION, PARTITION FINISH, PATTERN AND COLOR AS SELECTED BY PROJECT REPRESENTATIVE. FOLLOW MANUFACTURER'S PRODUCT AND INSTALLATION SPECIFICATIONS.

CONCRETE FLOOR CEMENTIOUS, DECORATIVE COATING:

PRODUCTS:

"SKIMSTONE" BY RUDD COMPANY, INC., 1141 NW 50TH ST., SEATTLE, WA 98107, PHONE (800) 444-7833. WWW.SKIMSTONE.COM.

"ARDEX SD-M, DESIGNER FLOOR FINISH BY ARDEX, WWW.ARDEX.COM, 888-512-7339.

BASE COAT & FINISH COAT & POSSIBLE 3RD COAT DEPENDING ON FINISH & TEXTURE, TROWEL-APPLIED, CEMENTIOUS, DECORATIVE COATING FOR EXISTING CONCRETE FLOOR. PROTECTED BY CONCRETE SEALER, BY COATING MANUFACTURER, AS RECOMMENDED FOR KITCHEN APPLICATIONS. COLOR AS SELECTED BY PROJECT REPRESENTATIVE. FOLLOW MANUFACTURER'S PRODUCT AND INSTALLATION SPECIFICATIONS.

INSTALLER OF CONCRETE FLOOR COATING MUST SUBMIT, IN WRITING AT TIME OF BID, PROOF OF A MINIMUM OF TWO (2) SUCCESSFUL INSTALLATIONS OF SPECIFIED PRODUCT TO BE USED. SUBMITTAL LETTER TO INCLUDE LOCATION, DATE, SIZE AND PROVIDE PROJECT OWNER'S REFERENCE PHONE OR EMAIL. FAILURE TO MEET MIN. QUALIFICATIONS WILL CAUSE THE BID TO BE NON-RESPONSIVE. THE ARCHITECT AND OWNER SHALL BE THE SOLE JUDGE OF PRODUCT EQUIVALENCY AND PAST INSTALLATION SUBMITTALS AND THEIR DECISION WILL BE FINAL.

KITCHEN CASEWORK:

SEE SPECIFICATIONS SEC. 064116 PLASTIC-LAMINATE-FACED ARCHITECTURAL CABINETS.

COUNTERTOPS:

"CORIAN" BY DUPONT, 1/2" SOLID POLYMER TOP, APPLIED BACKSPLASH, DOUBLE ROUND EDGE, STYLE AND COLOR AS SELECTED BY PROJECT REPRESENTATIVE. FOLLOW MANUFACTURER'S PRODUCT AND INSTALLATION SPECIFICATIONS. COORD. COUNTERTOP PENETRATIONS WITH MECHANICAL DWGS.

FLOOR BASE:

"JOHNSONITE", 4" RUBBER IN CLASSROOM 109 AND DAY ROOM 119, 6" RUBBER IN KITCHEN.

VINYL WAINSCOT:

"CONSTRUCTION SPECIALTIES, ACROVYN" 0.060" HIGH IMPACT RIGID SHEETS, STANDARD PEBBLETTE TEXTURE. USE MFR'S STANDARD 3/8" VERTICAL JOINT, INSIDE AND OUTSIDE CORNER TRIM PIECES. USE MFR'S ADHESIVE. SUPPLY AND INSTALL 3/8" PLYWOOD SUBSTRATE. COLOR AS SELECTED BY PROJECT REPRESENTATIVE. FOLLOW MANUFACTURER'S PRODUCT AND INSTALLATION SPECIFICATIONS.

PAINT:

GWB = SEMI-GLOSS, 1 COAT LATEX PRIMER, 2 COATS LATEX FINISH, TEXTURE AS DETERMINED BY PROJECT REPRESENTATIVE.

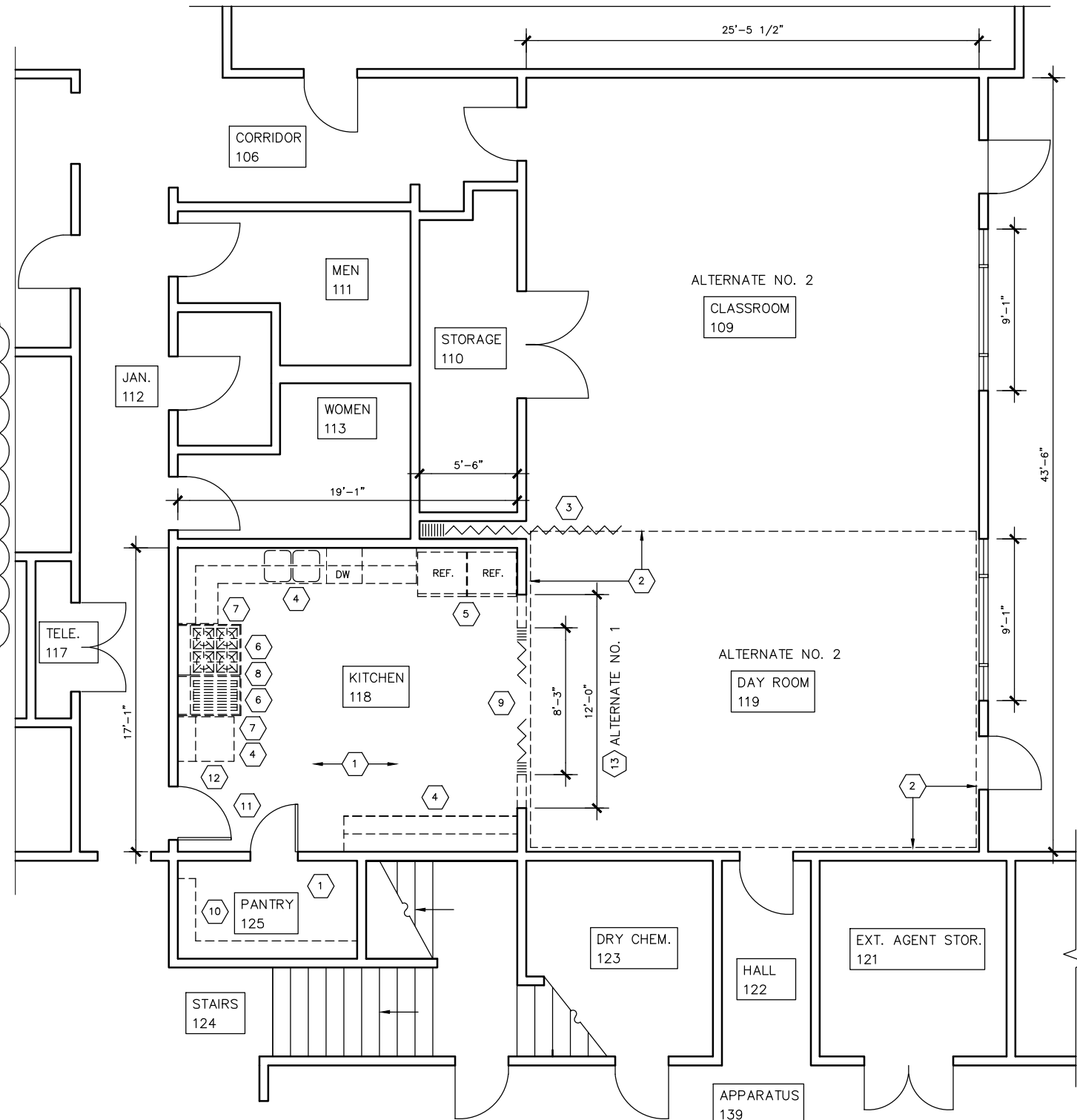
PLYWD = FLAT, 1 COAT INTERIOR ALKYD ENAMEL UNDERCOAT, 1 COAT LATEX ENAMEL.

METAL = SEMI-GLOSS, 1 COAT RUST-INHIBITING PRIMER (IF REQUIRED), 2 COATS LATEX ENAMEL.

NOTE: ALL COLORS AS SELECTED BY OWNER.

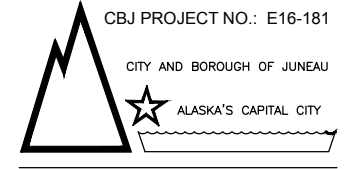
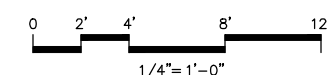
DEMOLITION BY CONTRACTOR

- 1 REMOVE EXISTING S.V. FLOOR FINISH & BASE. PREPARE CONCRETE SURFACE FOR NEW FLOOR FINISH.
- 2 REMOVE EXISTING CARPET & FLOOR BASE (EXTENT AS SHOWN ON DWGS.). PREPARE CONCRETE SURFACE FOR NEW FLOOR FINISH.
- 3 REMOVE EXISTING FOLDING PARTITION AND TRACK.
- 4 REMOVE EXISTING UPPER AND BASE CASEWORK INCL. SINK, DISHWASHER, COUNTERTOPS, UNDER CABINET LIGHTING, ETC. SALVAGE FOR OWNER'S REUSE.
- 5 REMOVE AND SALVAGE REFRIGERATORS FOR REINSTALLATION.
- 6 REMOVE AND SALVAGE GRILL AND BURNERS FOR REINSTALLATION.
- 7 REMOVE EXISTING SHEET METAL HEAT SHIELDS AT CASEWORK. SALVAGE FOR REINSTALLATION.
- 8 EXHAUST HOOD TO REMAIN IN PLACE.
- 9 REMOVE EXISTING ACCORDION DOORS.
- 10 REMOVE EXISTING PEGBOARD & SHELVING. SALVAGE OR REINSTALLATION.
- 11 REMOVE EXISTING WALL CLOCK AND FIRE EXTINGUISHER. REINSTALL AFTER NEW PAINTING.
- 12 REMOVE EXISTING ALARM SYSTEM LOUD SPEAKER.
- 13 WIDEN OPENING (SEE SHT. S1). ALT. NO. 1.



A DEMOLITION FLOOR PLAN
SCALE: 1/4" = 1'-0" D:\CAD\1308

- (FE) FIRE EXTINGUISHER
- EXIST. CONSTRUCTION
- - - - - ITEMS TO BE REMOVED
- ▭ EXISTING ITEMS TO REMAIN



CBJ Bldg. Permit No. _____

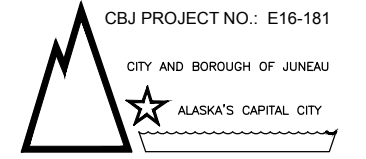
CONSTRUCTION DOCUMENTS
GLACIER FIRE STATION KITCHEN & CLASSROOM RENOVATION
 ADDENDUM NO. 1
 1700 Crest Avenue
 Juneau, Alaska 99801

Number	Date	By	Description of Revisions
1	MAY 6, 2016	AER	VARIOUS ITEMS

Sheet Title
DEMO. FLOOR PLAN
PRODUCT SPECIFICATIONS

Scale AS SHOWN (HALF SCALE AT 11X17)
Designed AER Drawn AER
Date APRIL 1, 2016 Checked AER
Approved By AER Job Number 1308

Sheet Number



CBJ Bldg. Permit No. _____

CONSTRUCTION DOCUMENTS
GLACIER FIRE STATION KITCHEN & CLASSROOM RENOVATION
 ADDENDUM NO. 1
 1700 Crest Avenue
 Juneau, Alaska 99801

Number	Date	By	Description of Revisions
1	MAY 6, 2016	AER	VARIOUS ITEMS

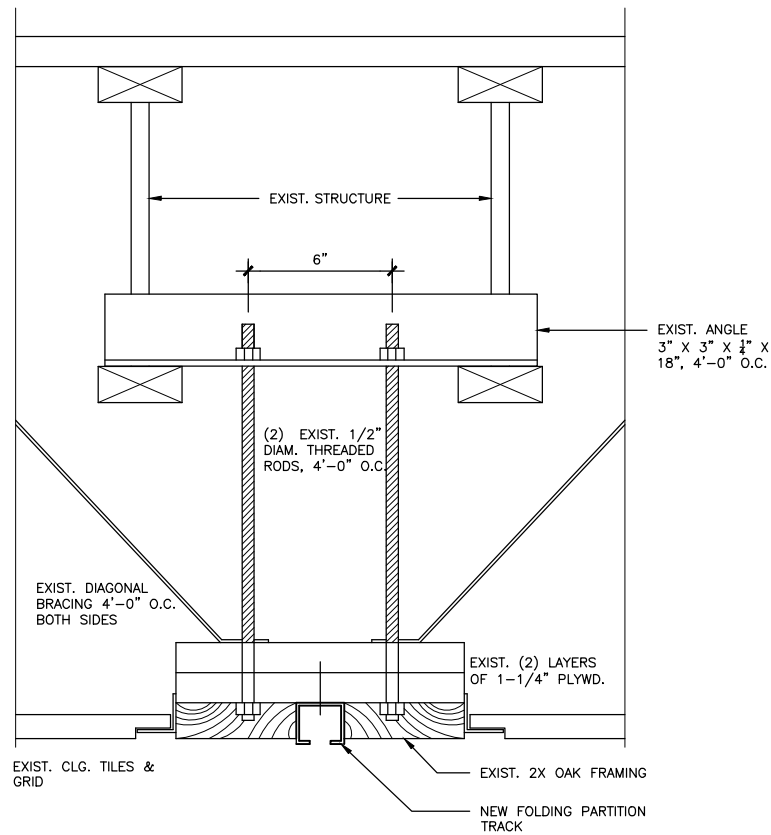
Sheet Title
NEW FLOOR PLAN DETAILS

Scale AS SHOWN (HALF SCALE AT 11X17)
 Designed AER Drawn AER
 Date APRIL 1, 2016 Checked AER
 Approved By AER Job Number 1308

Sheet Number

NEW WORK BY CONTRACTOR:

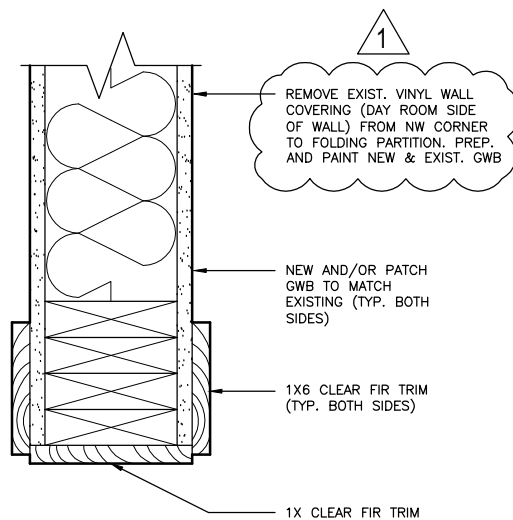
- 1 SUPPLY & INSTALL NEW UPPER AND BASE CASEWORK INCL. SINK, DISHWASHER, COUNTERTOPS, UNDER CABINET LIGHTING, ETC. REINSTALL EXIST. SHEET METAL HEAT SHIELDS.
- 2 SUPPLY & INSTALL NEW FLOOR FINISH AND BASE. INCLUDE RUBBER TRANSITION STRIP UNDER ACCORDION PARTITION.
- 3 EXISTING EXHAUST HOOD TO REMAIN IN PLACE.
- 4 WIDEN OPENING (SEE SHT. S1) (ALTERNATE NO. 1).
- 5 SUPPLY & INSTALL NEW FOLDING PARTITION.
- 6 SUPPLY & INSTALL NEW BASE CASEWORK.
- 7 SUPPLY & INSTALL NEW VINYL WAINSCOT.
- 8 NEW PAINT ON EXIST. WALLS.
- 9 SUPPLY & INSTALL NEW ACCORDION PARTITION.
- 10 REINSTALL EXISTING REFRIGERATORS.
- 11 REINSTALL EXISTING GRILL AND BURNERS.
- 12 REINSTALL EXIST. PEGBOARDS AND SHELVING.
- 13 REINSTALL EXIST. FIRE EXTINGUISHER AND WALL CLOCK.



B FOLDING PARTITION DETAIL

SCALE: 3" = 1'-0" D:\CAD\1308

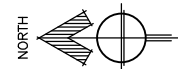
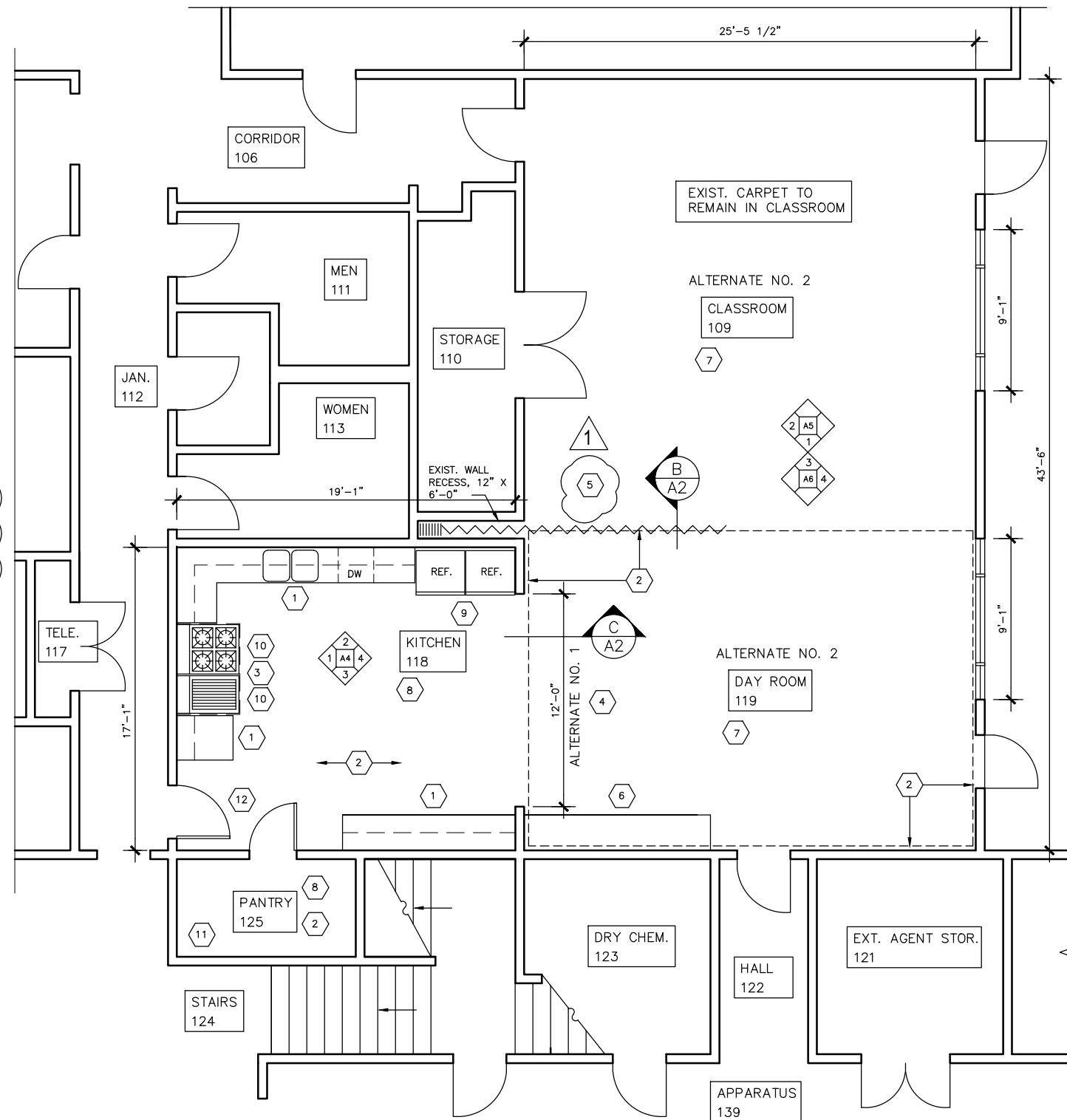
ALTERNATE NO. 2



C HEAD/JAMB DETAIL

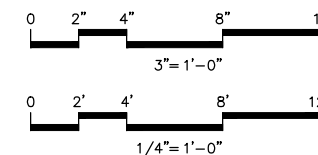
SCALE: 3" = 1'-0" D:\CAD\1308

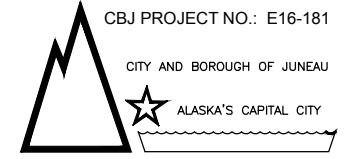
ALTERNATE NO. 1



A NEW FLOOR PLAN

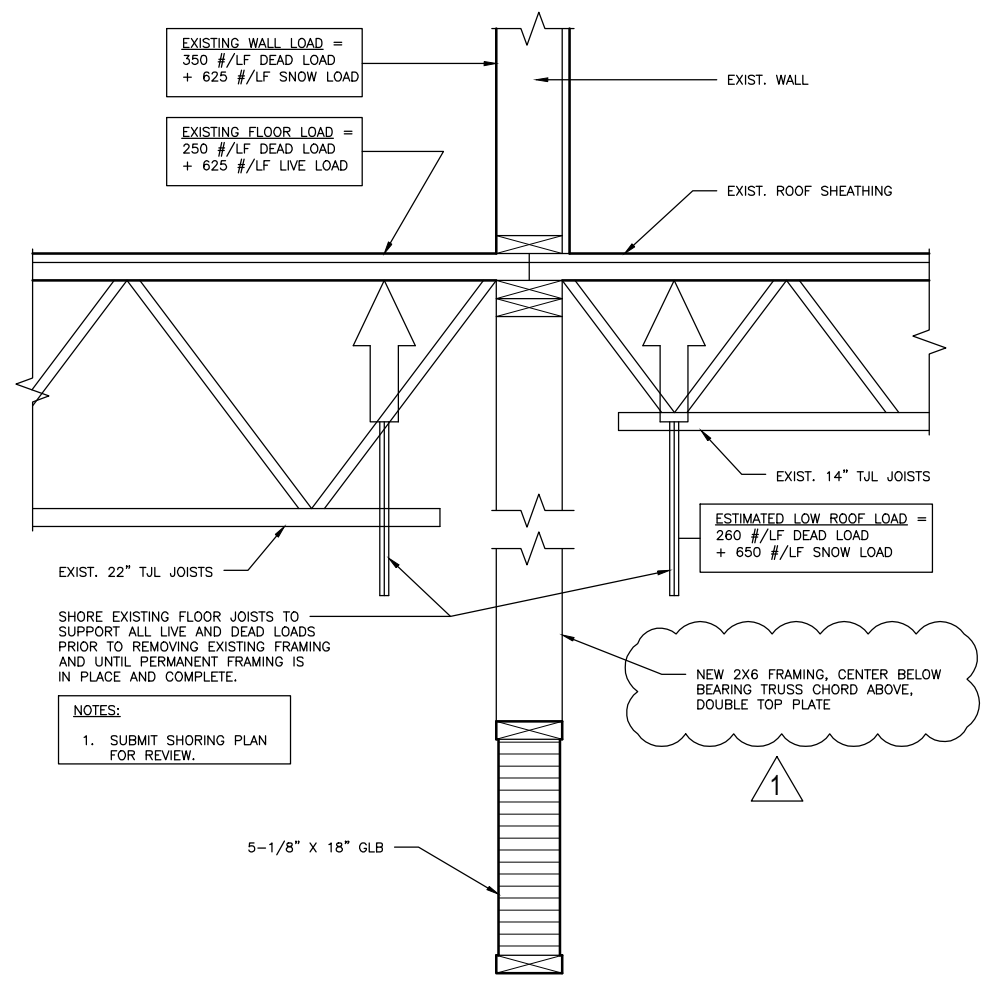
SCALE: 1/4" = 1'-0" D:\CAD\1308





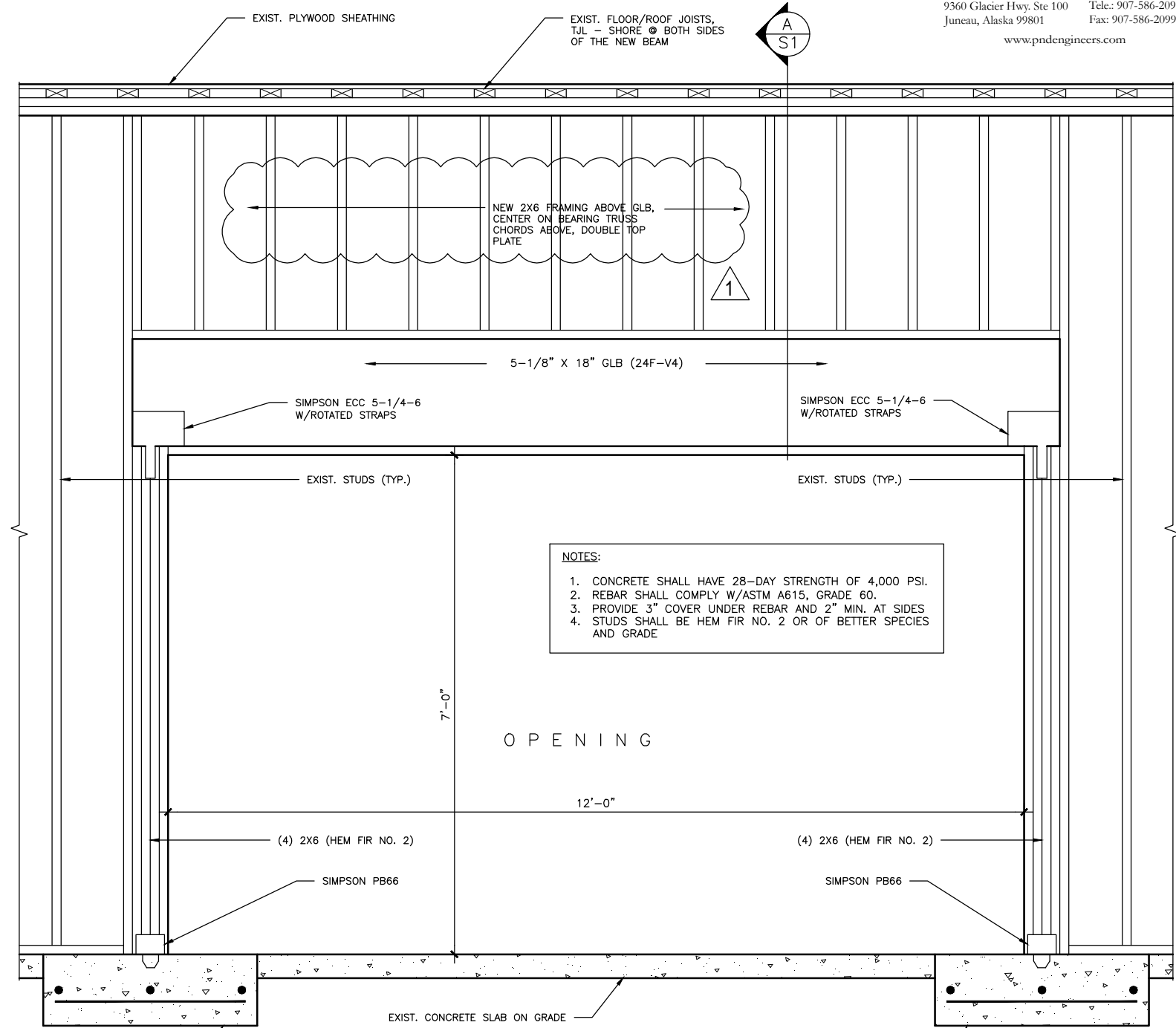
CBJ Bldg. Permit No. _____

CONSTRUCTION DOCUMENTS
GLACIER FIRE STATION KITCHEN & CLASSROOM RENOVATION
 ADDENDUM NO. 1
 1700 Crest Avenue
 Juneau, Alaska 99801



A WALL SECTION
 SCALE: 1-1/2" = 1'-0" D:\CAD\1308

ALTERNATE NO. 1

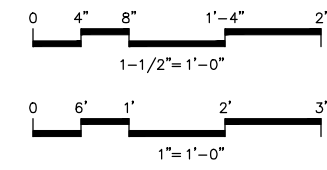


B OPENING FRAMING
 SCALE: 1" = 1'-0" D:\CAD\1308

ALTERNATE NO. 1

12" X 3'-0" X 3'-0" CONCRETE FOOTING W/(3) NO. 5 REBAR EA. WAY

12" X 3'-0" X 3'-0" CONCRETE FOOTING W/(3) NO. 5 REBAR EA. WAY



Number	Date	By	Description of Revisions
1	MAY 6, 2016	CG	LOWER GLB

Sheet Title
STRUCTURAL DETAILS ALTERNATE NO. 1

Scale AS SHOWN (HALF SCALE AT 11X17)
 Designed CG Drawn AER
 Date APRIL 1, 2016 Checked CG
 Approved By CG Job Number 1308

Sheet Number

ABBREVIATIONS:

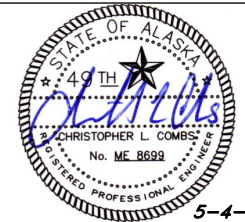
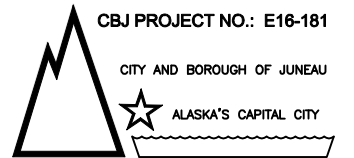
CB	CHEMICAL BOTTLE
CW	COLD WATER
DIA, Ø	DIAMETER
DFU	DRAINAGE FIXTURE UNIT
DW	DISHWASHER
DWV	DRAIN, WASTE & VENT
EQ	EQUIPMENT
°F, F	DEGREES FAHRENHEIT
FD	FLOOR DRAIN
FF	FINISHED FLOOR
FIX	FIXTURE
FPM	FEET PER MINUTE
FT	FEET
GA	GAUGE
G.C.	GENERAL CONTRACTOR
GD	GARBAGE DISPOSAL
GPM	GALLONS PER MINUTE
H	HEIGHT
HP	HORSEPOWER
HW	HOT WATER
I.E.	INVERT ELEVATION
IN	INCHES
IN.WG	INCHES WATER GAUGE
LB	POUNDS
MAX	MAXIMUM
MIN	MINIMUM
MFG	MANUFACTURER
N.I.C.	NOT IN CONTRACT
O&M	OPERATION AND MAINTENANCE
PH	PHASE
PSI	POUNDS PER SQUARE INCH
REF	REFERENCE
SPEC.	SPECIFICATION SECTION
TYP	TYPICAL
V	VENT, VOLTS
W	WASTE, WIDTH
WHA	WATER HAMMER ARRESTOR
W/	WITH
W&V	WASTE AND VENT
#	NUMBER

(E)	EXISTING TO REMAIN
(N)	NEW
(R)	REPLACE EXISTING
(X)	DEMOLISH EXISTING

GENERAL NOTES AND SPECIFICATIONS:

1. CODE: COMPLETED SYSTEMS SHALL MEET OR EXCEED THE REQUIREMENTS OF APPROPRIATE REGULATORY AGENCIES AND CURRENT CODES AS AMENDED BY STATE AND LOCAL GOVERNMENT INCLUDING: INT'L BUILDING CODE (IBC), INT'L MECHANICAL CODE (IMC), UNIFORM PLUMBING CODE (UPC), INT'L FIRE CODE (IFC), NATIONAL FIRE PROTECTION AGENCY (NFPA), NATIONAL ELECTRIC CODE (NEC). SEE ARCHITECTURAL PLANS FOR CODE YEAR.
2. ALL DEVICES AND EQUIPMENT SHALL BE UL LISTED. PRODUCT SAFETY STANDARDS SHALL BE DETERMINED THROUGH INDEPENDENT TESTING OF A NATIONALLY RECOGNIZED TESTING LABORATORY (NRTL) RECOGNIZED BY THE OCCUPATIONAL SAFETY AND HEALTH ADMINISTRATION (OSHA).
3. PLANS: THE DRAWINGS ARE PARTLY DIAGRAMMATIC. APPROXIMATE SIZES AND LOCATIONS OF BUILDING, EQUIPMENT, ETC. ARE SHOWN EXCEPT AS NOTED OR DIMENSIONED. SEE ARCHITECTURAL PLANS FOR REFERENCE. REFERENCE DIMENSIONS (REF) SHOW APPROXIMATE DISTANCES AND ARE NOT TO BE USED FOR LOCATING EQUIPMENT, ETC. VERIFY ALL REF DIMENSION WITH MEASUREMENTS TAKEN ON SITE AS NEEDED.
4. SUBSTITUTIONS: EQUIPMENT SHOWN REPRESENTS THE STANDARD OF QUALITY AND PERFORMANCE REQUIRED BY THE DESIGN. EQUAL OR BETTER EQUIPMENT MAY BE SUBSTITUTED WITH ENGINEER'S APPROVAL.
5. PERMITS: CONTRACTOR SHALL SECURE AND PAY FOR ALL NECESSARY PERMITS AND FEES.
6. INSURANCE: CONTRACTOR MUST HAVE IN FORCE BUILDERS' ALL RISK INSURANCE, WORKERS' COMPENSATION INSURANCE AND GENERAL LIABILITY INSURANCE AT ALL TIMES FOR ALL WORKERS WHILE WORKING ON THE PROJECT.
7. SUBMITTALS: SUBMIT SHOP DRAWINGS AS SPECIFIED OR NOTED FOR WORK PRIOR TO CONSTRUCTION FOR ENGINEER'S REVIEW.
8. SUBMITTALS: CONTRACTOR TO PROVIDE SPECIFICATION INFORMATION FOR ALL NEW EQUIPMENT TO BE INSTALLED PRIOR TO CONSTRUCTION FOR ENGINEER'S REVIEW.
9. ALL WORK TO BE PERFORMED TO CURRENT CODE AND INDUSTRY STANDARDS BY WORKERS WITH APPROPRIATE SKILLS AND TRAINING. INDUSTRY STANDARDS AND COMMON PRACTICES MAY NOT BE SHOWN OR OTHERWISE REPRESENTED ON THE PLANS, BUT THEY ARE REQUIRED IN THE WORK. ALL WORK AND METHODS TO BE IN ACCORDANCE WITH OSHA REGULATIONS.
10. PROVIDE ALL WORK, EQUIPMENT, TOOLS, MATERIALS, ETC. TO COMPLETE THE PROJECT.
11. INSTALL ALL MATERIALS AND EQUIPMENT PER MANUFACTURER'S INSTRUCTIONS AND IN THE BEST PRACTICES OF THE CRAFT. ALL MATERIALS AND EQUIPMENT TO BE NEW AND UNUSED.
12. COORDINATE SELECTION AND PROVISION OF EQUIPMENT WITH ACTUAL CONSTRUCTION CONDITIONS.
13. OBTAIN ENGINEER'S APPROVAL OF ALL PRODUCTS PRIOR TO ORDERING OR INSTALLING ANY PART OF THE SYSTEM.
14. SALVAGE EQUIPMENT: PRESENT ALL REMOVED EQUIPMENT TO THE OWNER. THE OWNER RETAINS THE RIGHT TO CLAIM ANY AND ALL SALVAGED EQUIPMENT AND MATERIALS. THOSE ITEMS NOT CLAIMED BY OWNER ARE TO BY HAULED AWAY AND PROPERLY DISPOSED OF BY CONTRACTOR.
15. BRING CONFLICTS BETWEEN DESIGN PLANS, MANUFACTURER'S SPECIFICATIONS, INSTRUCTIONS AND/OR CODE REQUIREMENTS TO THE ENGINEER'S ATTENTION FOR RESOLUTION.
16. ALL COMPLETED SYSTEMS TO BE ACCESSIBLE FOR ADJUSTMENT AND MAINTENANCE.
17. COORDINATE WORK WITH APPROPRIATE TRADES.
18. COORDINATE WORK SCHEDULE WITH BUILDING OWNER AND BUILDING OCCUPANTS.
19. MAKE ALL EXTERIOR PENETRATIONS WATERTIGHT AND WEATHERPROOF.
20. DEMONSTRATE FULLY THE PLUMBING AND MECHANICAL SYSTEMS TO OWNER AT CONCLUSION OF CONSTRUCTION.
21. COORDINATE EXTERIOR FLASHING REQUIREMENTS FOR THE ROOF AND WALL PRODUCTS WITH THE GENERAL CONTRACTOR
22. ALL MATERIALS, EQUIPMENT AND DEVICES MUST BE APPROPRIATELY RATED FOR THE INTENDED SERVICE.
23. PROPERLY PATCH TO MATCH EXISTING STRUCTURE AND FINISHES AS NEEDED.
24. ALL WORK SUBJECT TO OWNER'S AND ENGINEER'S REVIEW AND APPROVAL.
25. INSTRUCT BUILDING PERSONNEL AND OWNER IN OPERATION AND MAINTENANCE OF SYSTEMS.
26. PROVIDE O&M MANUAL INCLUDING MFG SPECIFICATIONS, O&M INSTRUCTIONS, WARRANTY INFORMATION FOR EACH EQUIPMENT ITEM, SCHEMATIC DIAGRAM OF CONTROLS, SYSTEM AS-BUILT, SOURCE OF SUPPLY FOR SPARE PARTS AND SERVICE INFORMATION.
27. AS-BUILT INFORMATION TO INCLUDE HAND WRITTEN NOTES, SKETCHES AND MARKS ON CONSTRUCTION DOCUMENTS; CAPTURE ALL INSTALLED CHANGES TO DESIGN PLANS.
28. PROVIDE O&M MANUALS AND AS-BUILT DOCUMENTS TO OWNER BEFORE FINAL COMPLETION.
29. WARRANTY: ALL WORK PERFORMED UNDER THIS CONTRACT TO BE FREE FROM DEFECTS IN MATERIALS AND WORKMANSHIP FOR A PERIOD OF ONE YEAR FROM ACCEPTANCE. ANY FAULTY MATERIALS OR WORKMANSHIP FOUND DURING THIS WARRANTY PERIOD SHALL BE REPAIRED OR REPLACED TO THE SATISFACTION OF THE OWNER.
30. ELECTRICAL WORK: ALL ELECTRICAL WORK IS TO BE PERFORMED BY A LICENSED ELECTRICIAN PER THE CURRENT NATIONAL ELECTRICAL CODE (NEC). SEE ELECTRICAL PLANS.
33. NOT USED
34. COORDINATE ALL MECHANICAL AND PLUMBING PENETRATIONS OF FIRE RATED ASSEMBLIES TO ENSURE PROPER ALLOWANCES ARE PROVIDED FOR INSTALLATION OF FIRESTOPPING MATERIALS AND SYSTEMS. FIRESTOPPING BY OTHERS.
35. ALL WORK IS SUBJECT TO THE REQUIREMENTS OF THE CONTRACT AND TECHNICAL SPECIFICATIONS.
36. SEE ARCHITECTURAL PLANS REGARDING EXISTING HAZARDOUS MATERIALS. COORDINATE WORK WITH GENERAL CONTRACTOR AS NEEDED.

PLUMBING LEGEND	
SYMBOL	DESCRIPTION
	WATER HAMMER ARRESTOR
	ANGLE STOP
	COLD WATER
	HOT WATER
	WASTE
	VENT
	STRAINER



CBJ Bldg. Permit No. _____

CONSTRUCTION DOCUMENTS
GLACIER FIRE STATION KITCHEN & CLASSROOM RENOVATION

ADDENDUM NO. 1
1700 Crest Avenue
Juneau, Alaska 99801

Number	Date	By	Description of Revisions
△	5/4/16	CLC	CHANGE SINK TO UNDERMOUNT

Sheet Title
LEGEND, NOTES, ABBREVIATIONS, SCHEDULES

Scale	AS SHOWN		
Designed	CC	Drawn	CC
Date	APRIL 1, 2016	Checked	CC
Approved By	CC	Job Number	

Sheet Number

M1 OF 2

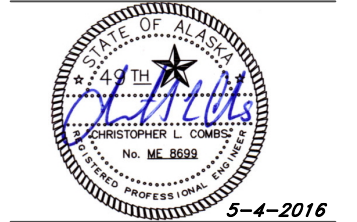
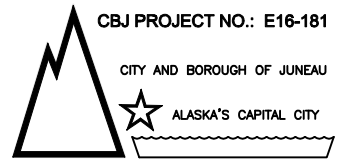
PLUMBING GENERAL NOTES			
1. PIPING MATERIAL SCHEDULE:			
PIPING	LOCATION	MATERIAL	JOINT
COLD WATER:	BELOW GRADE	COPPER/K	NO LEAD BRAZE
COLD WATER:	ABOVE GROUND	COPPER/L	NO LEAD SOLDER
HOT WATER:	ABOVE GROUND	COPPER/L	NO LEAD SOLDER
WASTE:	FIRST FLOOR	CAST IRON	NO-HUB
TAILPIECE, TRAP, BRANCH	UNDER SINK	BRASS/CHROME	20 GA
2. NOT USED			
3. PLANS ARE SCHEMATIC AND DO NOT SHOW EXACT ROUTING OR EVERY OFFSET WHICH MAY BE REQUIRED. PRIOR TO COMMENCING WORK, COORDINATE WITH ALL TRADES FOR CLEARANCE REQUIREMENTS.			
4. MATERIALS, METHODS AND INSTALLATION SHALL COMPLY WITH THE PROVISIONS OF THE 2009 EDITION OF THE UNIFORM PLUMBING CODE.			
5. SLOPE ALL WASTE PIPING AT 2% UNLESS OTHERWISE NOTED ON DRAWINGS. OBTAIN APPROVAL FROM CODE AUTHORITY BEFORE INSTALLING PIPING AT LESS THAN 2% AS REQUIRED.			
6. HANGERS AND SUPPORTS FOR PIPING SHALL BE IN ACCORDANCE WITH SECTION 314 OF THE UNIFORM PLUMBING CODE.			
7. PIPING PENETRATIONS OF FIRE RATED WALLS OR FLOORS SHALL BE SLEEVED AND FIRE STOPPED WITH LISTED MATERIALS SO AS TO MAINTAIN THE INTEGRITY AND RATING OF THE FLOOR OR WALL.			
8. SEE ARCHITECTURAL PLANS FOR EXACT PLUMBING FIXTURE ROUGH-IN LOCATIONS AND ELEVATIONS.			
9. NOT USED			
10. PROVIDE DIELECTRIC CONNECTIONS BETWEEN DISSIMILAR METALS.			
11. NOT USED			
12. PLUMBING EQUIPMENT, VALVES AND TRAP PRIMERS SHALL BE LOCATED IN EASILY ACCESSIBLE LOCATIONS. UNLESS SHOWN ON ARCHITECTURAL DRAWINGS. REQUIRED ACCESS PANELS SHALL BE PROVIDED BY THE PLUMBING CONTRACTOR AND INSTALLED BY THE GENERAL CONTRACTOR.			
13. LOCATE AND PROVIDE ALL REQUIRED FLOOR, WALL AND FOOTING SLEEVES.			
14. ALL PIPING, EQUIPMENT, FITTINGS ETC IN THE DRINKING WATER PIPING SYSTEM MUST MEET THE 2014 SAFE DRINKING WATER ACT. MUST MEET NSF 61-G.			
15. ALL ISOLATION VALVES TO BE FULL PORT BALL VALVES			
16. INSTALL ESCUTCHEON PLATES AT ALL PIPING WALL PENETRATIONS			
17. DISINFECT DOMESTIC WATER PIPING AND EQUIPMENT PER UPC.			

PLUMBING FIXTURE SCHEDULE							
SYMBOL	DESCRIPTION	MANUFACTURER & MODEL NUMBERS	W	V	CW	HW	REMARKS
KS	KITCHEN SINK	SINK: ELKAY #DXUH3118, DOUBLE BOWL, UNDER MOUNT, STAINLESS STEEL FAUCET: MOEN #8244, (2) WRIST BLADES, ADA, BRASS/CHROME, GOOSENECK SUPPLIES: BRASSCRAFT #KTCR****, BRASS/CHROME, 1/4-TURN ANGLE BALL STOP	1 1/2"	1 1/2"	1/2"	1/2"	INSTALL FAUCET, SIDE SPRAY NOZZLE AND DISHWASHER AIR GAP DEVICE ON COUNTERTOP. COORDINATE INSTALLATION WITH GENERAL CONTRACTOR AND COUNTERTOP INSTALLER.
IM	ICE MAKER	TUBING: PEX SUPPLIES: BRASSCRAFT #KTCR**** (SIMILAR)					EXISTING REFRIGERATOR ICE MAKER, (2) REFRIGERATORS MATCH EXISTING SUPPLY TUBING SIZES

NOTE: MINIMUM TRAP AND TRAP ARM SIZES SHOWN. 2" MIN DRAIN REQUIRED BEYOND TRAP ARM FOR SINKS

PLUMBING EQUIPMENT SCHEDULE				
SYMBOL	DESCRIPTION	MAKE/MODEL	VOLTS, PHASE, POWER	NOTES
DW	DISHWASHER (COMMERCIAL GRADE)	HOBART #LXEH-2	208/240(3 WIRE), 1PH, 30.5AMPS	HOBART #00-942097 DRAIN WATER TEMPERING KIT REQUIRED: KIT INSTALLED BY MFG CERTIFIED TECHNICIAN. 1/2" HW - DISHWASHER SUPPLY 1/2" CW - DRAIN WATER TEMPERING KIT STRAINER AND WHA REQUIRED HW & CW.
GD	GARBAGE DISPOSAL	INSINKERATOR #PRO750	120V, 1PH, 3/4HP	SINK MOUNTED POWER CORD DISHWASHER HOSE CONNECTION
AG	AIR GAP	DEARBORN BRASS #DB-CD-3		COPPER CONSTRUCTION WITH CHROME PLATED METAL CAP
WHA	WATER HAMMER ARRESTOR	WATTS #LF15M2-AS		1/2" SWEAT SIZE A, 1-11 FIXTURE UNITS MEETS ASSE 1010

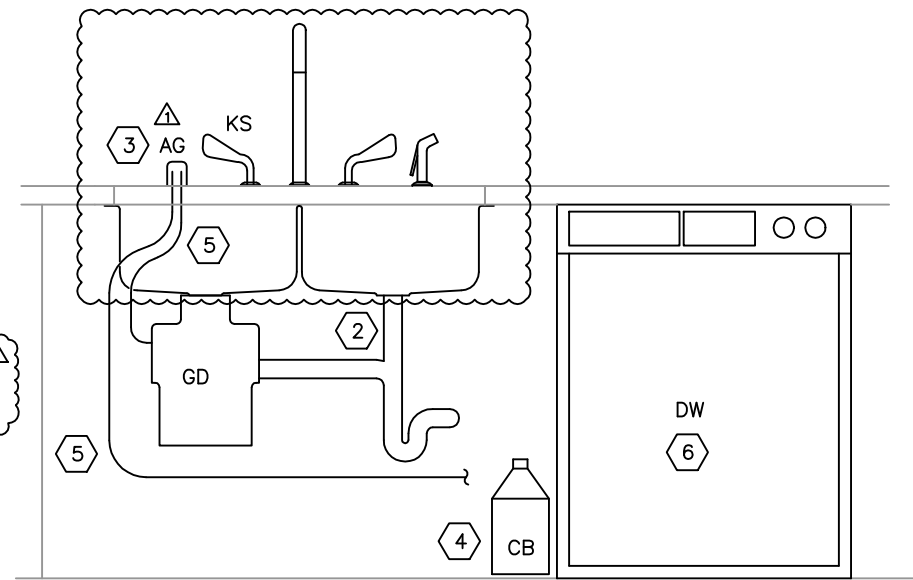
MECHANICAL DRAWINGS LIST	
SHEET	TITLE
M1	LEGEND, NOTES, ABBREVIATIONS, SCHEDULES
M2	PLUMBING PLANS: DEMOLITION & NEW WORK; DETAILS



CBJ Bldg. Permit No. _____

WASTE PIPING NOTES:

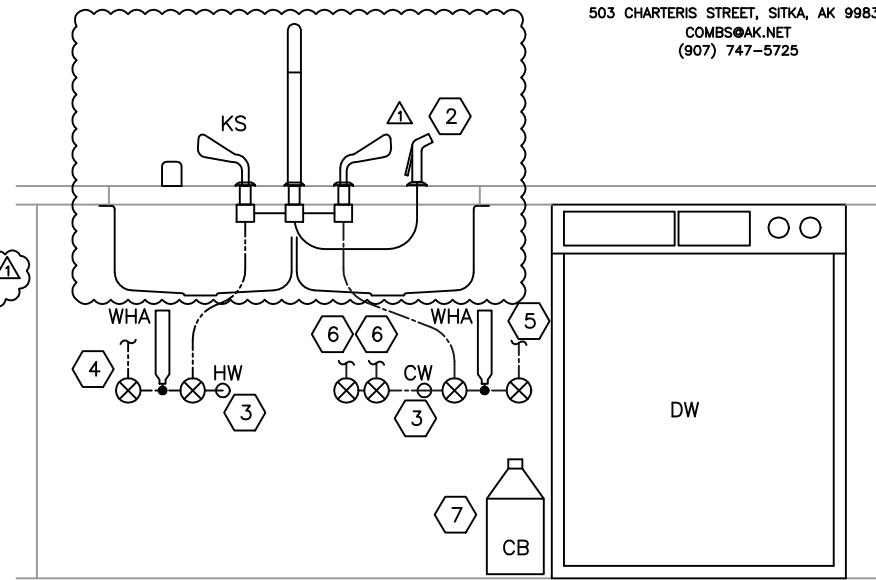
1. WATER PIPING NOT SHOWN FOR CLARITY.
- 2 CHROME PLATED BRASS TUBULAR TAILPIECE, P-TRAP, BRANCH.
- 3 AIR GAP DEVICE MOUNTED ON COUNTER TOP. INSTALL 10" FROM CENTERLINE OF FAUCET. MUST BE ABOVE FLOOD LEVEL OF SINK.
- 4 ALLOW PROPER SPACE FOR DISHWASHER CHEMICAL BOTTLES, ABOUT 8" WIDTH FROM DISHWASHER. VERIFY BOTTLE AND CHEMICAL PIPING HEIGHT REQUIREMENTS WITH MFG'S INSTALLATION INSTRUCTIONS.
- 5 INSTALL HOSE RATED FOR 180°F FROM DISHWASHER DRAIN TO AIR-GAP-DEVICE TO THE GARBAGE DISPOSAL.
- 6 OPERATE THE DISHWASHER AND VERIFY THAT THE DRAIN DISCHARGE WATER TEMPERATURE IS BELOW 140°F.



C UNDERSINK WASTE PIPING
NO SCALE

WATER PIPING NOTES:

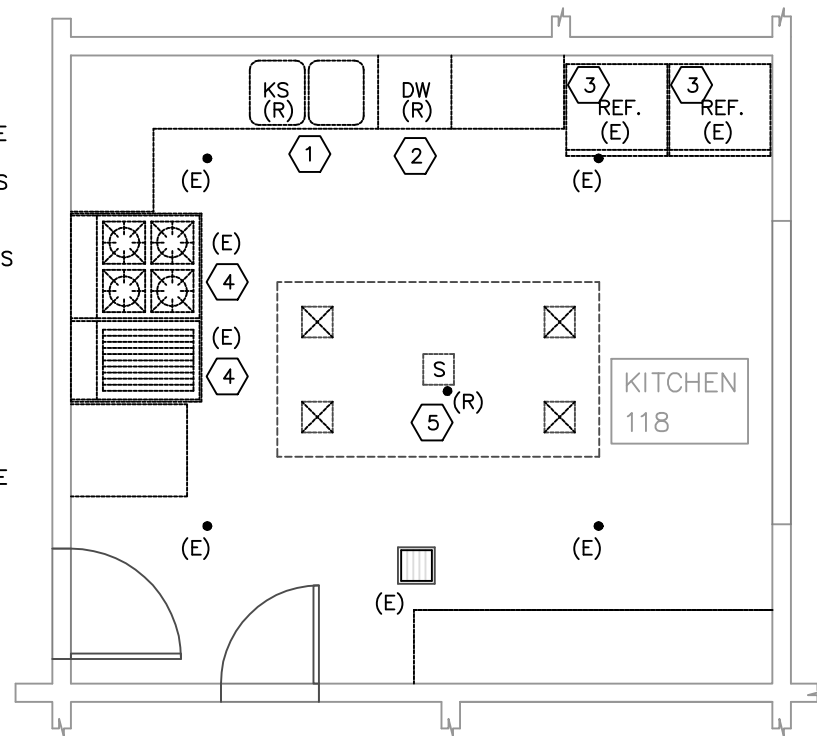
1. WASTE PIPING NOT SHOWN FOR CLARITY.
- 2 INSTALL SIDE SPRAY NOZZLE 10" FROM FAUCET CENTERLINE.
- 3 INSTALL NEW 3/4" HW & 3/4" CW MANIFOLD CONNECTED TO EXISTING LINES WITHIN THE WALL. COORDINATE WALLBOARD PATCHING WITH THE GENERAL CONTRACTOR.
- 4 3/4" HW SUPPLY TO DISHWASHER. INSTALL INLINE STRAINER PER DW MFG INSTRUCTIONS.
- 5 1/2" CW SUPPLY TO DISHWASHER. INSTALL INLINE STRAINER. COORDINATE FITTING TYPE WITH MANUFACTURER'S SUPPLIED HOSE.
- 6 NEW ANGLE STOP AND PEX LINE TO REFRIGERATOR ICE MACHINE. MATCH EXISTING LINE SIZE.
- 7 ALLOW PROPER SPACE FOR DISHWASHER CHEMICAL BOTTLES, ABOUT 8" WIDTH FROM DISHWASHER. VERIFY BOTTLE AND CHEMICAL PIPING HEIGHT REQUIREMENTS WITH MFG'S INSTALLATION INSTRUCTIONS.



D UNDERSINK WATER PIPING
NO SCALE

DEMOLITION NOTES:

- 1 REMOVE KITCHEN SINK, GARBAGE DISPOSAL, HW & CW LINES TO 3/4 LINES IN THE WALL, DRAINS (TAILPIECE, P-TRAPS)
- 2 REMOVE DISHWASHER AND HOSES
- 3 REMOVE AND SALVAGE REFRIGERATORS FOR REINSTALLATION. DEMOLISH CW SUPPLIES TO ICE MAKERS.
- 4 REMOVE AND SALVAGE GRILLE AND OVEN FOR REINSTALLATION. ENSURE PROPANE SUPPLIES ARE SECURED CLOSED DURING CONSTRUCTION.
- 5 DEMOLISH SINGLE FIRE SPRINKLER HEAD.

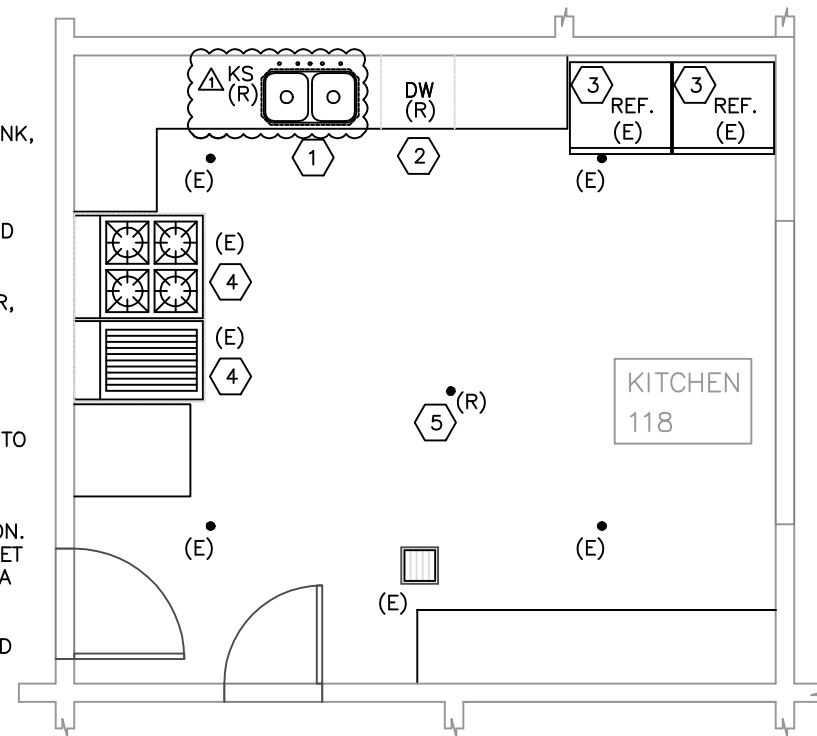


A DEMOLITION FLOOR PLAN - KITCHEN
GRAPHIC SCALE AS SHOWN

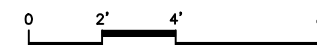


NEW WORK NOTES:

- 1 SUPPLY & INSTALL KITCHEN SINK, GARBAGE DISPOSAL, HW & CW LINES, DRAINS (TAILPIECE, P-TRAPS). SEE WASTE PIPING AND WATER PIPING DETAILS AND NOTES ON THIS SHEET.
- 2 SUPPLY & INSTALL DISHWASHER, HW & CW LINES, DRAIN HOSE.
- 3 INSTALL NEW CW SUPPLIES TO REFRIGERATORS' ICE MAKERS.
- 4 RECONNECT GRILLE AND OVEN TO PROPANE SUPPLIES.
- 5 RELOCATE A FIRE SPRINKLER HEAD AT NEW CEILING ELEVATION. REPLACE WITH NEW HEAD. MEET NFPA 13 AND STATE OF ALASKA REQUIREMENTS. TEST AND CERTIFY SYSTEM AS REQUIRED. WORK CONDUCTED BY CERTIFIED FIRE SPRINKLER CONTRACTOR.



B NEW FLOOR PLAN - KITCHEN
GRAPHIC SCALE AS SHOWN



CONSTRUCTION DOCUMENTS
GLACIER FIRE STATION KITCHEN & CLASSROOM RENOVATION

ADDENDUM NO. 1
1700 Crest Avenue
Juneau, Alaska 99801

Number	Date	By	Description of Revisions
△	5/4/16	CLC	CHANGE SINK TO UNDERMOUNT

Sheet Title
**PLUMBING PLANS:
DEMOLITION &
NEW WORK; DETAILS**

Scale AS SHOWN
Designed CC Drawn CC
Date APRIL 1, 2016 Checked CC
Approved By CC Job Number

Sheet Number

M2 OF 2



DEMOLITION NOTES

Provide electrical demolition for the spaces as shown. Remove all power, distribution, lighting, controls, communications and associated equipment, devices, raceways and conductors throughout the spaces as shown to prepare for the new work.

Coordinate the removal and reconnection of all electrical equipment with the other trades.

Remove all raceways and conductors back to the originating panelboard or control panel. Existing raceways may be reused for new equipment where practical.

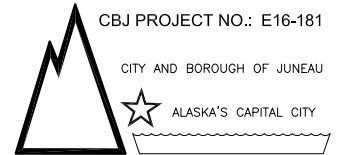
With Alternate #2 provide electrical demolition for the Day Room 119 and Classroom 109.

GORMAN ENGINEERS

10761 HORIZON DRIVE
JUNEAU, ALASKA 99801-1626
PHONE: 463-6721 CELL: 723-8884
e-mail: pgorman@gci.net

A.E. Rogers
ARCHITECTS, LLC

P.O. Box 34401 • Juneau, Alaska 99803
Tele 907.789.7589 • www.aerogers.com



CBJ PROJECT NO.: E16-181
CBJ Bldg. Permit No. _____

CONSTRUCTION DOCUMENTS
GLACIER FIRE STATION KITCHEN & CLASSROOM RENOVATION
 ADDENDUM NO. 1
 1700 Crest Avenue
 Juneau, Alaska 99801

Number	Date	By	Description of Revisions
1	5/5/16	PG	ADDENDUM #1

Sheet Title
POWER/SIGNAL AND LIGHTING DEMOLITION PLANS & NOTES

Scale AS SHOWN (HALF SCALE AT 11X17)
 Designed PG Drawn AER/PG
 Date APRIL 1, 2016 Checked PG
 Approved By PG Job Number 1308

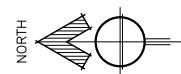
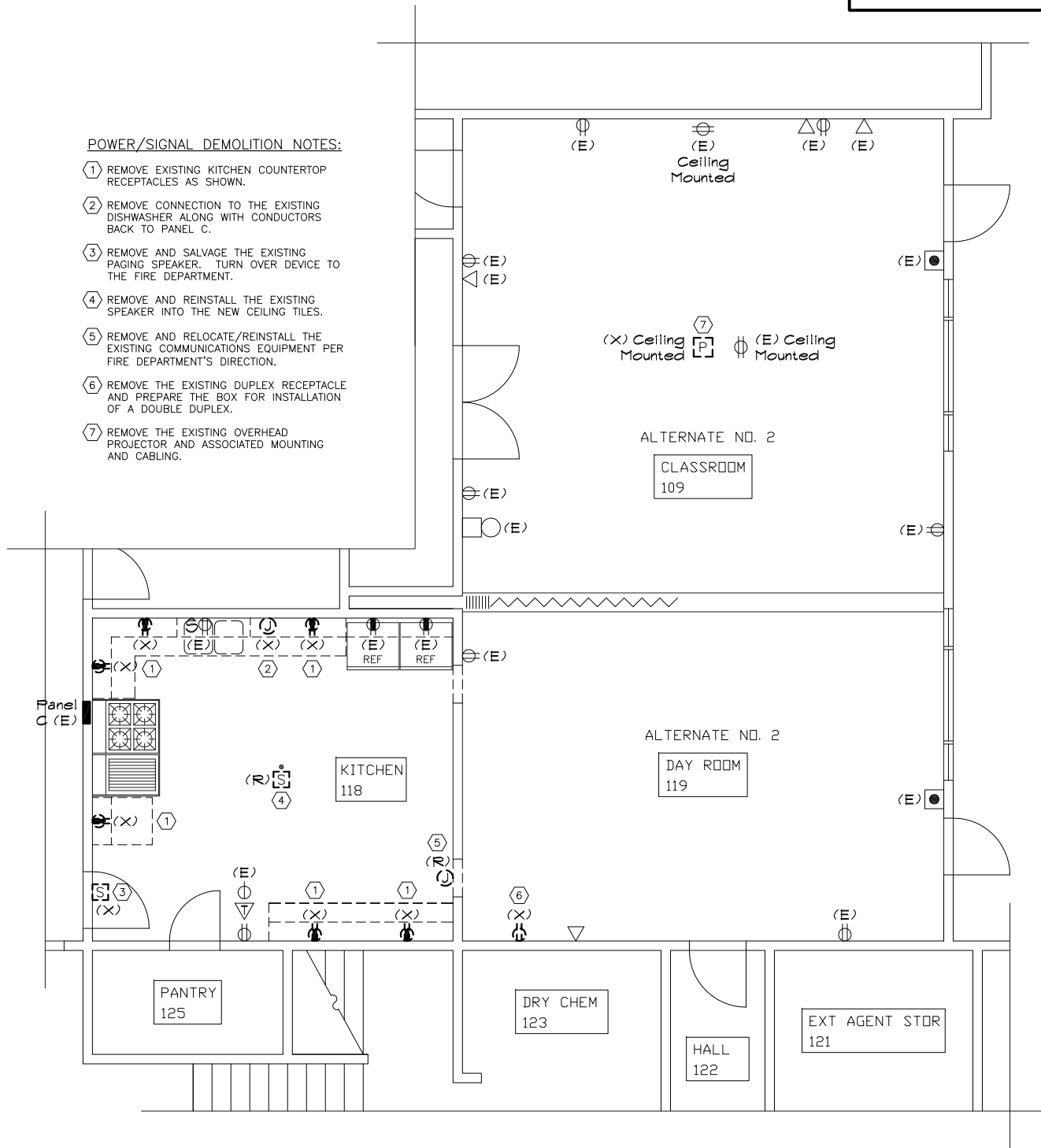
Sheet Number
E2 OF 3

POWER/SIGNAL DEMOLITION NOTES:

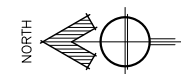
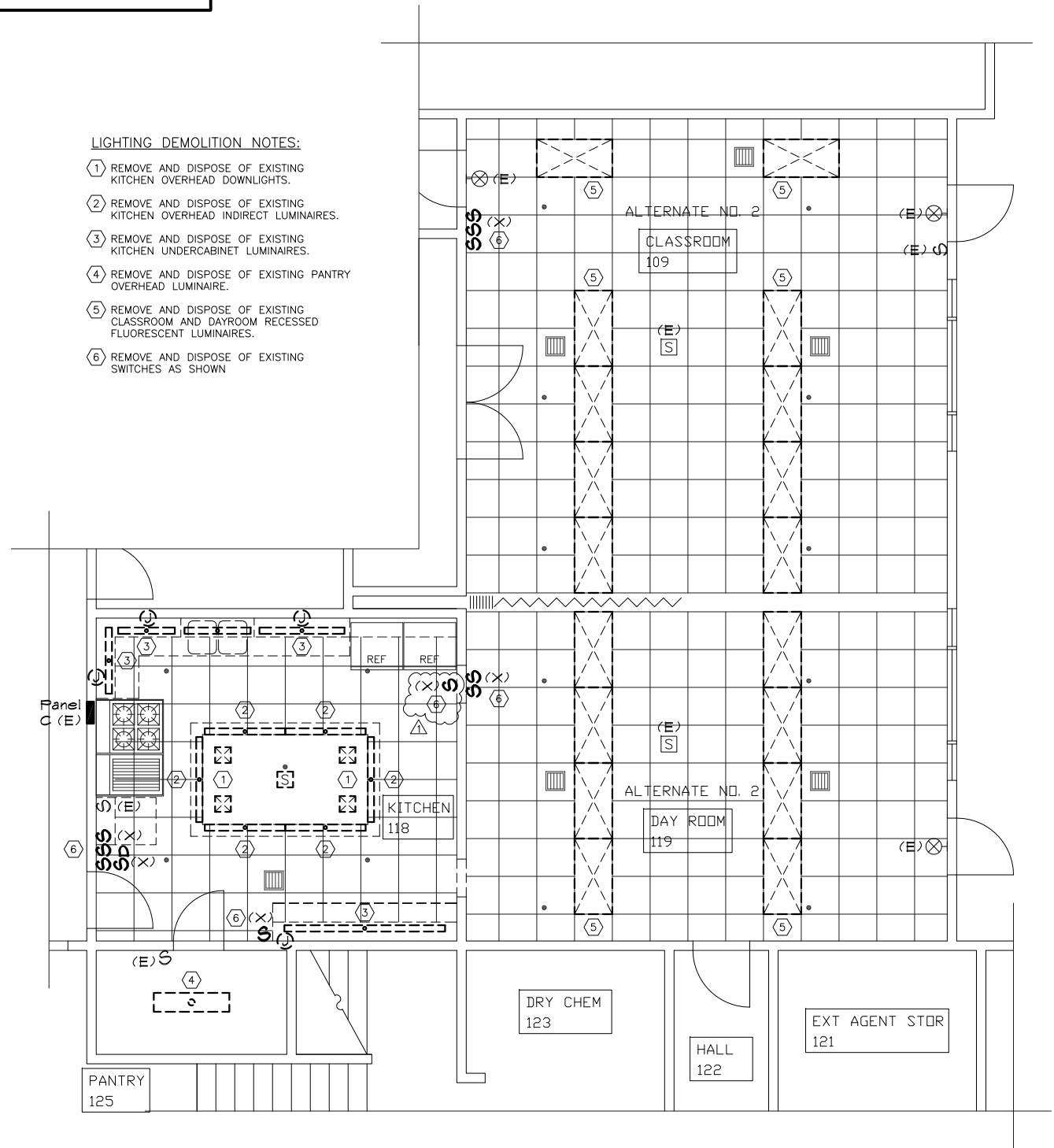
- 1 REMOVE EXISTING KITCHEN COUNTERTOP RECEPTACLES AS SHOWN.
- 2 REMOVE CONNECTION TO THE EXISTING DISHWASHER ALONG WITH CONDUCTORS BACK TO PANEL C.
- 3 REMOVE AND SALVAGE THE EXISTING PAGING SPEAKER. TURN OVER DEVICE TO THE FIRE DEPARTMENT.
- 4 REMOVE AND REINSTALL THE EXISTING SPEAKER INTO THE NEW CEILING TILES.
- 5 REMOVE AND RELOCATE/REINSTALL THE EXISTING COMMUNICATIONS EQUIPMENT PER FIRE DEPARTMENT'S DIRECTION.
- 6 REMOVE THE EXISTING DUPLEX RECEPTACLE AND PREPARE THE BOX FOR INSTALLATION OF A DOUBLE DUPLEX.
- 7 REMOVE THE EXISTING OVERHEAD PROJECTOR AND ASSOCIATED MOUNTING AND CABLING.

LIGHTING DEMOLITION NOTES:

- 1 REMOVE AND DISPOSE OF EXISTING KITCHEN OVERHEAD DOWNLIGHTS.
- 2 REMOVE AND DISPOSE OF EXISTING KITCHEN OVERHEAD INDIRECT LUMINAIRES.
- 3 REMOVE AND DISPOSE OF EXISTING KITCHEN UNDERCABINET LUMINAIRES.
- 4 REMOVE AND DISPOSE OF EXISTING PANTRY OVERHEAD LUMINAIRE.
- 5 REMOVE AND DISPOSE OF EXISTING CLASSROOM AND DAYROOM RECESSED FLUORESCENT LUMINAIRES.
- 6 REMOVE AND DISPOSE OF EXISTING SWITCHES AS SHOWN



A POWER/SIGNAL DEMOLITION
 SCALE: 1/4" = 1'-0"



B LIGHTING DEMOLITION
 SCALE: 1/4" = 1'-0"