

CONSTRUCTION DOCUMENTS

Glacier Fire Station

KITCHEN & CLASSROOM RENOVATION

A.E. Rogers

ARCHITECTS, LLC

P.O. Box 34401 • Juneau, Alaska 99803
Tele 907.789.7589 • www.aerogers.com

ARCHITECTURAL
A.E. ROGERS ARCHITECTS, LLC

P.O. BOX 34401
JUNEAU, ALASKA 99803

907-789-7589
EMAIL arogers@aerogers.com

MECHANICAL
COMBS ENGINEERING

503 CHARTERIS STREET
SITKA, ALASKA 99835

907-747-5725
EMAIL combs@ak.net

ELECTRICAL
GORMAN ENGINEERS

10761 HORIZON DRIVE
JUNEAU, ALASKA 99801

907-463-6721
FAX 907-586-6216
EMAIL pgorman@gci.net

OWNER
CITY & BOROUGH OF JUNEAU

155 S. Seward Street
JUNEAU, ALASKA 99801

907-586-0894
FAX 907-463-2606
EMAIL steve.tada@juneau.org



CBJ PROJECT NO. E16-181

CITY AND BOROUGH OF JUNEAU

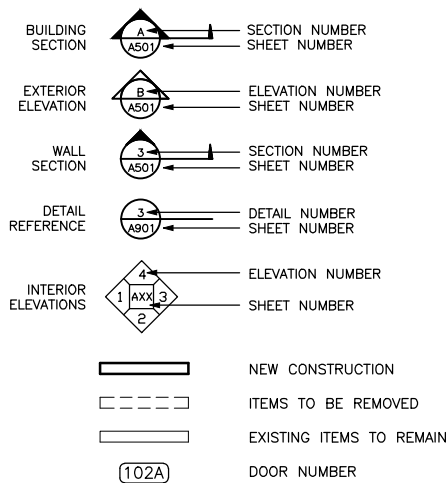
ALASKA'S CAPITAL CITY

ABBREVIATIONS

NOTE: THIS IS A GENERIC LIST. NOT ALL ABBREVIATIONS ARE USED IN DRAWINGS

AB ANCHOR BOLTS	(E) EXISTING	EXISTING EXTERIOR	MTD MOUNTED	RESIL RESILIENT
ACOUS ACOUSTICAL	EXT ACUSTICAL	EXISTING EXTERIOR	MUL MULLION	RFP REINFORCED FIBERGLASS PANEL
ACM ACOUSTICAL CEILING MATERIAL	FA FIRE ALARM	FIRE ALARM	N NORTH	RGTR REGISTER
ACT ABOVE FINISH FLOOR	FD FLOOR DRAIN	FIRE EXTINGUISHER	NO OR # NOT IN CONTRACT NUMBER	RM ROOM
AL ALUMINUM	FE FIRE EXTINGUISHER	FIRE HOSE CABINET	NTS NOT TO SCALE	RO ROUGH OPENING
ARCH ARCHITECTURAL	FHC FINISH	FLOOR	CA OVERALL	SCHED SCHEDULE
ASB ASBESTOS	FL FLOOR	FACE OF CONCRETE	OBS OBSOLETE	SD SOAP DISPENSER
ASPH ASPHALT	FOF FACE OF FINISH	FACE OF STUDS	OC ON CENTER	SHTG SHEATHING
BD BOARD	FOS FACE OF STUDS	FOOT OR FEET	OD OUTSIDE DIAMETER	SIM SIMILAR
BITUM BITUMINOUS	FT FLOOR	FURRING	OFI OFFICER	SPEC SPECIFICATIONS
BLDG BUILDING	FURR FURRING	FUTURE	OFF OFFICE	STC SOUND TRANSMISSION CLASS
BOD BOTTOM OF DECK	FUT FUTURE	GAUGE	OFI OFFICER	STD STANDARD
CB CATCH BASIN	GA GALVANIZED	GRAB BAR	OPNG OPENING	STL STEEL
CG CORNER GUARD	GB GRAB BAR	GLASS	OPP OPPOSITE	STRUC STRUCTURAL
CI CAST IRON	GR GRADE	GYP GYPSUM	OSB ORIENTED STRAND BOARD	SS STAINLESS STEEL
CLG CEILING	GYP GYPSUM WALL BOARD	H HIGH	PIC PLATE	TB TOWEL BAR
CLR CLEAR	HB HOSE BIBB	HC ACCESSIBLE TO DISABLED	PL PLASTIC LAMINATE	TC TOP OF CURB
COL COLUMN	HDW HARDWOOD	HT HEIGHT	PLYWD PLYWOOD	TEL TELEPHONE
CONC CONCRETE	HM HOLLOW METAL	INSUL INSULATION	PR PAIR	TER TERRAZZO
CORR CORRUGATED	JAN JANITORY	LAV LAVATORY	PTD PAINTED	TJI TRUSS JOIST
CRPT CARPET	LT LIGHT	MAX MAXIMUM	PTN PARTITION	TOD TOP OF DECK
DEPT DEPARTMENT	M/E MECHANICAL AND ELECTRICAL	MECH MECHANICAL	QV QUARRY TILE	TPD TOILET PAPER DISPENSER
DF DRINKING FOUNTAIN	MIN MINIMUM	MISC MISCELLANEOUS	REF REFRIGERATOR	TS TUBE STEEL
DET DETAIL	REIN REINFORCED	REQ REQUIRED	REF REFERENCE	TV TELEVISION
DIA DIAMETER	REIN REINFORCED	RESIL RESILIENT	REF REFERENCE	UL UNDERWRITER LABORATORY
DM DIMENSION	REIN REINFORCED	RFP REINFORCED FIBERGLASS PANEL	REF REFERENCE	UN UNLESS OTHERWISE NOTED
DN DOWN	REIN REINFORCED	RGTR REGISTER	REF REFERENCE	VEST VESTIBULE
DS DOWNSPOUT	REIN REINFORCED	RM ROOM	REF REFERENCE	VTR VENT THROUGH ROOF
DWG DRAWING	REIN REINFORCED	RO ROUGH OPENING	REF REFERENCE	WC WATER CLOSET
EA EACH	REIN REINFORCED	SCHED SCHEDULE	REF REFERENCE	WB WOOD
EL ELEVATION	REIN REINFORCED	SD SOAP DISPENSER	REF REFERENCE	WP WATERPROOF
ELEC ELECTRICAL	REIN REINFORCED	SHTG SHEATHING	REF REFERENCE	WR WATER RESISTANT
ELEV ELEVATION	REIN REINFORCED	SIM SIMILAR	REF REFERENCE	WSCT WANSICOT
EP ELECTRICAL PANELBOARD	REIN REINFORCED	SPEC SPECIFICATIONS	REF REFERENCE	WT WEIGHT
EQ EQUAL	REIN REINFORCED	STC SOUND TRANSMISSION CLASS	REF REFERENCE	(X) REMOVE
EQUIP EQUIPMENT	REIN REINFORCED	STD STANDARD	REF REFERENCE	

DRAWING LEGEND



GENERAL NOTES

ALL CONSTRUCTION TO BE PER 2009 IBC AND ALL APPLICABLE MECHANICAL, ELECTRICAL, FIRE CODES (AS AMENDED BY THE CBJ) AND THE CBJ ZONING/LAND USE REQUIREMENTS.

- ALL INTERIOR WALLS ARE TO BE 2X WOOD FRAMING UNLESS OTHERWISE NOTED. DIMENSIONS ARE TO FACE OF FRAMING MEMBER UNLESS OTHERWISE NOTED.
- CONTRACTOR TO VERIFY ALL EXISTING CONDITIONS AND DIMENSIONS BEFORE BEGINNING WORK AND TO NOTIFY THE OWNER'S REPRESENTATIVE AS TO ANY DISCREPANCIES.
- SALVAGE ITEMS & MATERIALS: PRESENT REMOVED ITEMS & MATERIALS TO THE OWNER. THE OWNER RETAINS THE RIGHT TO CLAIM ANY AND ALL SALVAGED ITEMS & MATERIALS. THOSE ITEMS NOT CLAIMED BY OWNER ARE TO BE REMOVED AND PROPERLY DISPOSED OF BY THE CONTRACTOR. DISPOSAL OF DEMOLITION MATERIAL (NOT BE SALVAGED) IS THE RESPONSIBILITY OF THE CONTRACTOR. BURNING AND DISPOSAL OF CONCRETE AND EXCAVATED MATERIAL ON THE PROJECT SITE IS NOT ALLOWED.
- REMOVE ALL ELECTRICAL OUTLETS, TELEPHONE JACKS, SWITCHES AND THERMOSTATS THAT ARE LOCATED IN INTERIOR WALLS TO BE REMOVED OR WALLS WHERE A CONFLICT WITH NEW WORK EXISTS. IF UTILITIES ARE NOT TO BE EXTENDED, CAP IN A SAFE MANNER IN ACCORDANCE WITH ACCEPTED INDUSTRY STANDARDS.
- WHERE REMOVAL OF EXISTING CONDITIONS HAS OCCURRED, PATCH AS REQUIRED TO MATCH EXISTING ADJACENT SURFACES AND FINISHES.
- CONTRACTOR SHALL PROVIDE A MINIMUM OF 24 HOURS NOTICE PRIOR TO SHUTTING OFF ANY SYSTEM.
- THESE DRAWINGS ARE FOR USE ON THE GLACIER FIRE STATION PROJECT ONLY. THEY ARE NOT TO BE REUSED IN WHOLE OR IN PART ON ANY OTHER PROJECT WITHOUT WRITTEN PERMISSION FROM A.E. ROGERS ARCHITECTS, LLC.

ALTERNATES

- ALTERNATE NO. 1:
WIDEN THE EXIST. OPENING BETWEEN THE KITCHEN 118 AND DAY ROOM 119 (SEE SHEET S1). WORK TO INCLUDE TEMPORARY SHORING, NEW GLULAM BEAM, FRAMING SUPPORT, CONCRETE PADS, GYPSUM WALLBOARD, TRIM AND FINISHES TO MATCH EXISTING ADJACENT SURFACES.
- ALTERNATE NO. 2:
WORK INCLUDES ALL WORK IN CLASSROOM 109 AND DAY ROOM 119.

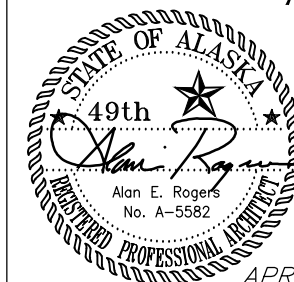
DRAWING SCHEDULE

ARCHITECTURAL	MECHANICAL
A0 CODE INFORMATION SYMBOLS & ABBREVIATIONS	M1 LENGEND, NOTES, ABBREVIATIONS SCHEDULES
A1 DEMO. FLOOR PLAN, PRODUCT SPECIFICATIONS	M2 PLUMBING PLANS: DEMOLITION NEW WORK; DETAILS
A2 NEW FLOOR PLAN	
A3 DEMO. REFL. CLG. PLAN & NEW REFL. CLG. PLAN	
A4 INTERIOR ELEVATIONS	ELECTRICAL
A5 INTERIOR ELEVATIONS	E1 LEGEND, NOTES, LUMINAIRES & PANLE SCHEDULES
A6 INTERIOR ELEVATIONS	E2 POWER/SIGNAL & LIGHTING DEMOLITION PLANS & NOTES
A7 EXISTING CONDITION PHOTOS	E4 POWER/SIGNAL & LIGHTING NEW WORK PLANS & NOTES
STRUCTURAL	
S1 STRUCTURAL DETAILS, ALTERNATE NO. 1	

CONSTRUCTION SET
APRIL 1, 2016

CBJ PROJECT NO. E16-181
ARCHITECT PROJ. NO. 1308

CODE INFORMATION
SYMBOLS &
ABBREVIATIONS



APRIL 1, 2016

A0

IBC ARCHITECTURAL CODE REVIEW

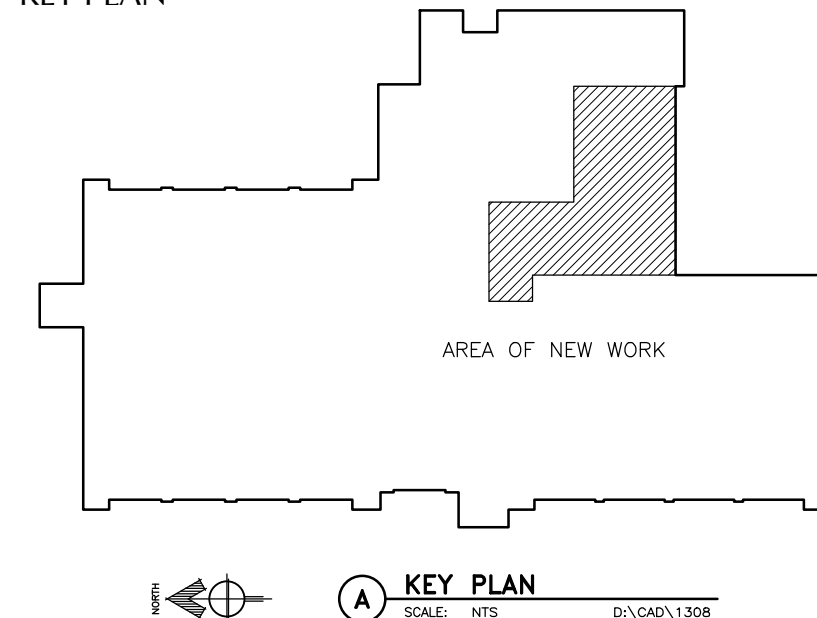
NOT APPLICABLE

BUILDING CODE SUMMARY

NOTE: ALL CODES AS AMENDED BY THE STATE OF ALASKA & THE CITY & BOROUGH OF JUNEAU

- INTERNATIONAL BUILDING CODE, 2009 EDITION
- INTERNATIONAL MECHANICAL CODE, 2009 EDITION
- INTERNATIONAL FIRE CODE, 2009 EDITION
- UNIFORM PLUMBING CODE, 2009 EDITION
- NEC, 2011
- NFPA 13, 2009 EDITION
- NFPA 72, 2009 EDITION (FIRE ALARM)
- NFPA 101, 2009 EDITION
- NFPA 99, 2009 EDITION

KEY PLAN



KEY PLAN
SCALE: NTS

D:\CAD\1308

PRODUCT SPECIFICATIONS

CONTRACTOR NOTES

SELECT MANUFACTURERS LISTED OR APPROVED EQUALS (BY PROJECT REPRESENTATIVE).

SHOP DRAWINGS AND MFR. SUBMITTALS REQUIRED FOR ALL PRODUCTS.

CONTRACTOR TO REVIEW ALL SUBMITTALS AND SHOP DRAWINGS FOR COMPLIANCE WITH THE DRAWINGS AND SPECIFICATIONS BEFORE ORDERING MATERIALS.

FOLDING PARTITION:

"MODERNFOLD, INC., SOUNDMASTER #8 ACCORDION FOLDING PARTITION", MANUAL OPERATION, PARTITION FINISH, PATTERN AND COLOR AS SELECTED BY PROJECT REPRESENTATIVE. FOLLOW MANUFACTURER'S PRODUCT AND INSTALLATION SPECIFICATIONS.

CONCRETE FLOOR COATING:

"SKIMSTONE" BY RUDD COMPANY, INC., 1141 NW 50TH ST., SEATTLE, WA 98107, PHONE (800) 444-7833. WWW.SKIMSTONE.COM. 2-COMPONENT, TROWEL-APPLIED, CEMENTIOUS, DECORATIVE COATING FOR EXISTING CONCRETE FLOOR. SOLUTION, COLORANTS, POWDER, SEALER ND CLEANER BY "SKIMSTONE". COLOR AS SELECTED BY PROJECT REPRESENTATIVE. FOLLOW MANUFACTURER'S PRODUCT AND INSTALLATION SPECIFICATIONS.

INSTALLER OF CONCRETE FLOOR COATING MUST SUBMIT, IN WRITING AT TIME OF BID, PROOF OF A MINIMUM OF TWO (2) SUCCESSFUL INSTALLATIONS OF SKIMSTONE 2-COMPONENT COLORED CEMENTIOUS COATING, OR EQUIVALENT PRODUCT. SUBMITTAL LETTER TO INCLUDE LOCATION, DATE, SIZE AND PROVIDE PROJECT OWNER'S REFERENCE PHONE OR EMAIL. FAILURE TO MEET MIN. QUALIFICATIONS WILL CAUSE THE BID TO BE NON-RESPONSIVE. THE ARCHITECT AND OWNER SHALL BE THE SOLE JUDGE OF PRODUCT EQUIVALENCY AND PAST INSTALLATION SUBMITTALS AND THEIR DECISION WILL BE FINAL.

KITCHEN CASEWORK:

"WESTMARK COMMERCIAL CASEWORK", SERIES 100, REVEAL OVERLAY STYLE, 3MM EDGE BANDING, ADJUSTABLE SHELF CLIPS (NICKEL PLATED STEEL), 5-KNUCKLE HINGES, METAL WIRE PULLS. COLOR AS SELECTED BY PROJECT REPRESENTATIVE. FOLLOW MANUFACTURER'S PRODUCT AND INSTALLATION SPECIFICATIONS.

COUNTERTOPS:

"CORIAN" BY DUPONT, 1/2" SOLID POLYMER TOP, APPLIED BACKSPLASH, DOUBLE ROUND EDGE, STYLE AND COLOR AS SELECTED BY PROJECT REPRESENTATIVE. FOLLOW MANUFACTURER'S PRODUCT AND INSTALLATION SPECIFICATIONS.

FLOOR BASE:

"JOHNSONITE", 4" RUBBER IN CLASSROOM 109 AND DAY ROOM 119, 6" RUBBER IN KITCHEN.

VINYL WAINSCOT:

"CONSTRUCTION SPECIALTIES, ACROVYN" 0.060" HIGH IMPACT RIGID SHEETS, STANDARD PEBBLETTE TEXTURE. USE MFR'S STANDARD 3/8" VERTICAL JOINT, INSIDE AND OUTSIDE CORNER TRIM PIECES. USE MFR'S ADHESIVE. SUPPLY AND INSTALL 3/8" PLYWOOD SUBSTRATE. COLOR AS SELECTED BY PROJECT REPRESENTATIVE. FOLLOW MANUFACTURER'S PRODUCT AND INSTALLATION SPECIFICATIONS.

PAINT:

GWB = SEMI-GLOSS, 1 COAT LATEX PRIMER, 2 COATS LATEX FINISH, TEXTURE AS DETERMINED BY PROJECT REPRESENTATIVE.

PLYWD = FLAT, 1 COAT INTERIOR ALKYD ENAMEL UNDERCOAT, 1 COAT LATEX ENAMEL.

METAL = SEMI-GLOSS, 1 COAT RUST-INHIBITING PRIMER (IF REQUIRED), 2 COATS LATEX ENAMEL.

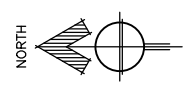
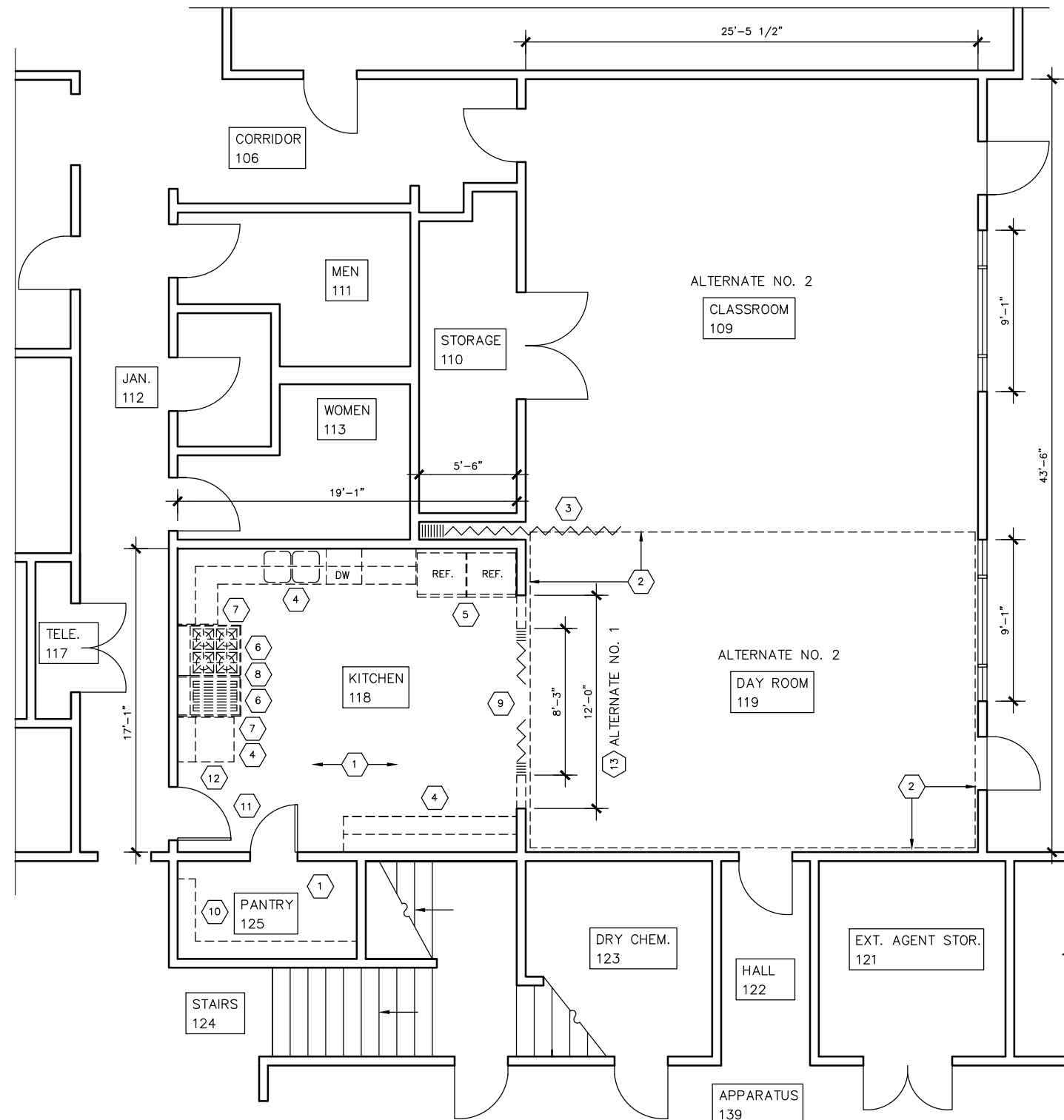
NOTE: ALL COLORS AS SELECTED BY OWNER.

DEMOLITION BY CONTRACTOR

- 1 REMOVE EXISTING S.V. FLOOR FINISH & BASE. PREPARE CONCRETE SURFACE FOR NEW FLOOR FINISH.
- 2 REMOVE EXISTING CARPET & FLOOR BASE (EXTENT AS SHOWN ON DWGS.). PREPARE CONCRETE SURFACE FOR NEW FLOOR FINISH.
- 3 REMOVE EXISTING FOLDING PARTITION AND TRACK.

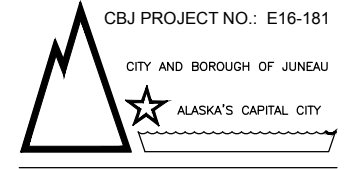
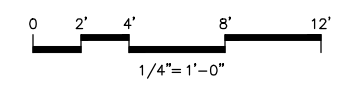
DEMOLITION BY OWNER

- 4 REMOVE EXISTING UPPER AND BASE CASEWORK INCL. SINK, DISHWASHER, COUNTERTOPS, UNDER CABINET LIGHTING, ETC. SALVAGE FOR OWNER'S REUSE.
- 5 REMOVE AND SALVAGE REFRIGERATORS FOR REINSTALLATION.
- 6 REMOVE AND SALVAGE GRILL AND BURNERS FOR REINSTALLATION.
- 7 REMOVE EXISTING SHEET METAL HEAT SHIELDS AT CASEWORK. SALVAGE FOR REINSTALLATION
- 8 EXHAUST HOOD TO REMAIN IN PLACE.
- 9 REMOVE EXISTING ACCORDION DOORS.
- 10 REMOVE EXISTING PEGBOARD & SHELVING. SALVAGE OR REINSTALLATION.
- 11 REMOVE EXISTING WALL CLOCK AND FIRE EXTINGUISHER. REINSTALL AFTER NEW PAINTING.
- 12 REMOVE EXISTING ALARM SYSTEM LOUD SPEAKER.
- 13 WIDEN OPENING (SEE SHT. S1). ALT. NO. 1.



DEMOLITION FLOOR PLAN
SCALE: 1/4" = 1'-0" D:\CAD\1308

- (FE) FIRE EXTINGUISHER
- EXIST. CONSTRUCTION
- - - - - ITEMS TO BE REMOVED
- ▭ EXISTING ITEMS TO REMAIN



CBJ Bldg. Permit No. _____

CONSTRUCTION DOCUMENTS
GLACIER FIRE STATION KITCHEN & CLASSROOM RENOVATION

1700 Crest Avenue
 Juneau, Alaska 99801

Number	Date	By	Description of Revisions

Sheet Title
DEMO. FLOOR PLAN
PRODUCT SPECIFICATIONS

Scale AS SHOWN (HALF SCALE AT 11X17)
 Designed AER Drawn AER
 Date APRIL 1, 2016 Checked AER
 Approved By AER Job Number 1308



CONSTRUCTION DOCUMENTS
GLACIER FIRE STATION KITCHEN & CLASSROOM RENOVATION

1700 Crest Avenue
Juneau, Alaska 99801

Number	Date	By	Description of Revisions

Sheet Title
NEW FLOOR PLAN DETAILS

Scale AS SHOWN (HALF SCALE AT 11X17)
Designed AER Drawn AER
Date APRIL 1, 2016 Checked AER
Approved By AER Job Number 1308

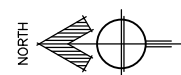
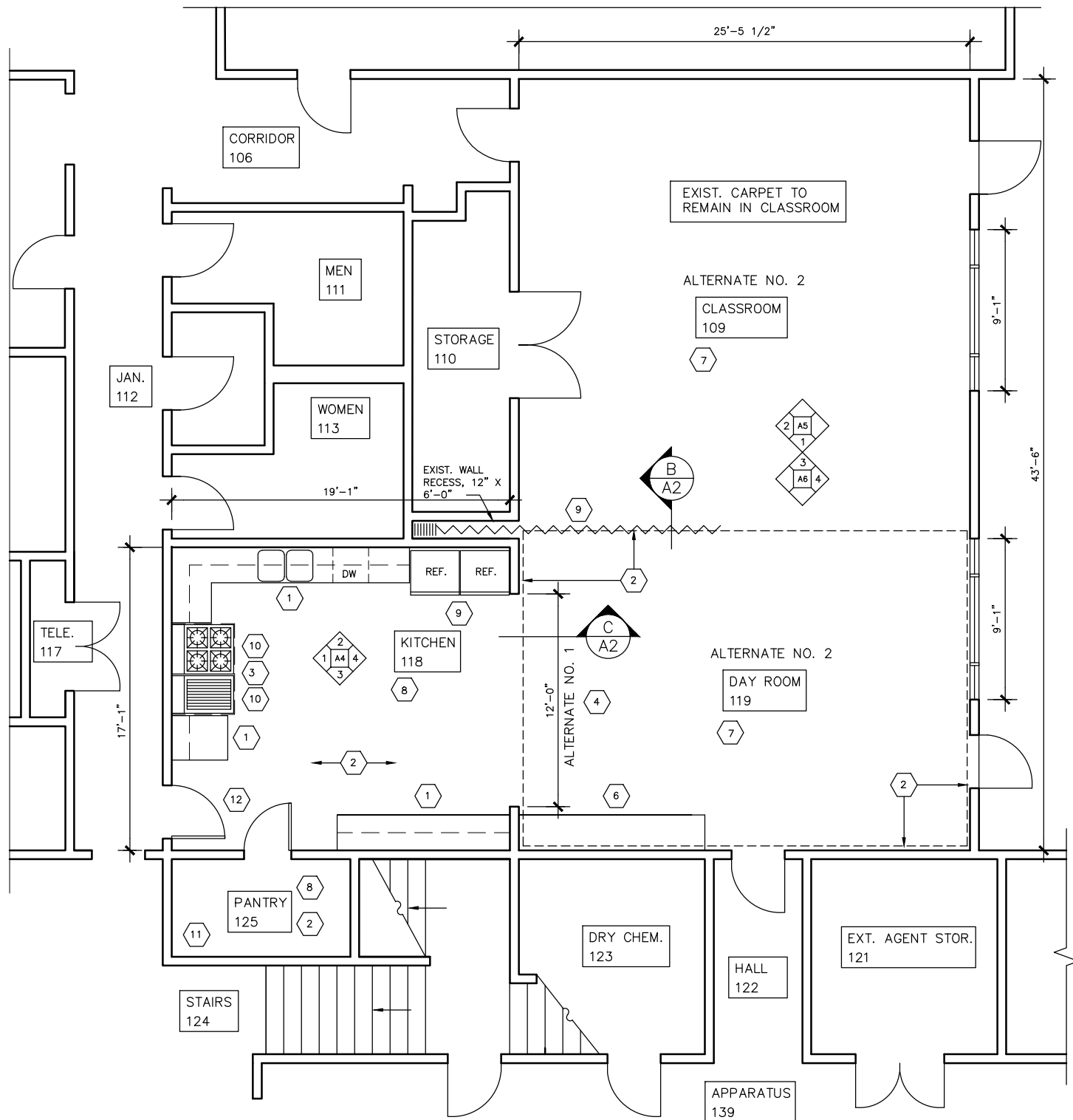
Sheet Number

NEW WORK BY CONTRACTOR:

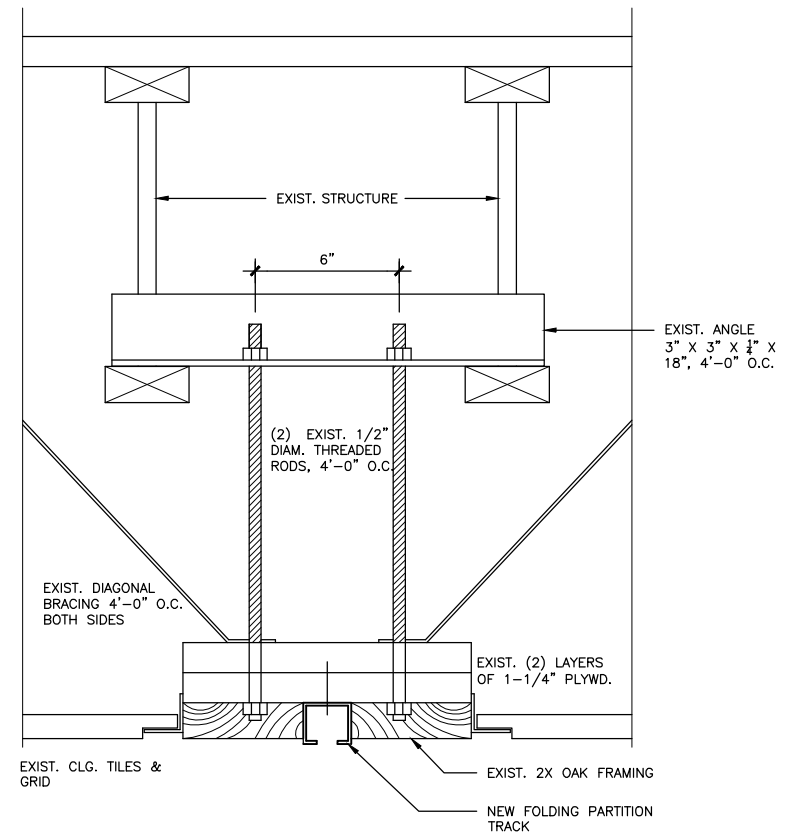
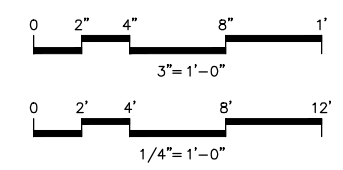
- 1 SUPPLY & INSTALL NEW UPPER AND BASE CASEWORK INCL. SINK, DISHWASHER, COUNTERTOPS, UNDER CABINET LIGHTING, ETC. REINSTALL EXIST. SHEET METAL HEAT SHIELDS.
- 2 SUPPLY & INSTALL NEW FLOOR FINISH AND BASE. INCLUDE RUBBER TRANSITION STRIP UNDER ACCORDION PARTITION.
- 3 EXISTING EXHAUST HOOD TO REMAIN IN PLACE.
- 4 WIDEN OPENING (SEE SHT. S1) (ALTERNATE NO. 1).
- 5 SUPPLY & INSTALL NEW FOLDING PARTITION.
- 6 SUPPLY & INSTALL NEW BASE CASEWORK.
- 7 SUPPLY & INSTALL NEW VINYL WAINSCOT.
- 8 NEW PAINT ON EXIST. WALLS.
- 9 SUPPLY & INSTALL NEW ACCORDION PARTITION.

NEW WORK BY OWNER:

- 9 REINSTALL EXISTING REFRIGERATORS.
- 10 REINSTALL EXISTING GRILL AND BURNERS.
- 11 REINSTALL EXIST. PEGBOARDS AND SHELVING.
- 12 REINSTALL EXIST. FIRE EXTINGUISHER AND WALL CLOCK.

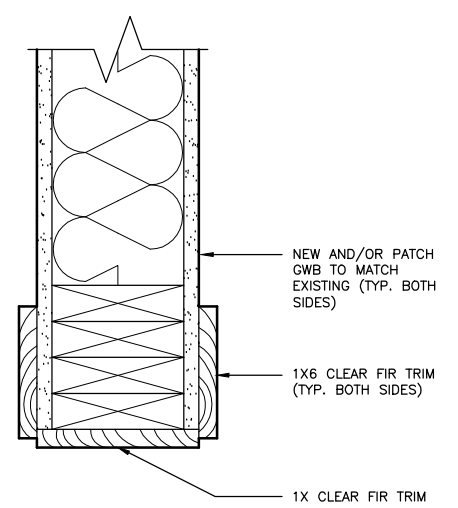


A NEW FLOOR PLAN
SCALE: 1/4" = 1'-0" D:\CAD\1308



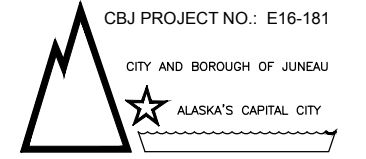
B FOLDING PARTITION DETAIL
SCALE: 3" = 1'-0" D:\CAD\1308

ALTERNATE NO. 2



C HEAD/JAMB DETAIL
SCALE: 3" = 1'-0" D:\CAD\1308

ALTERNATE NO. 1



CBJ Bldg. Permit No. _____

CONSTRUCTION DOCUMENTS

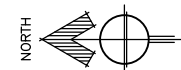
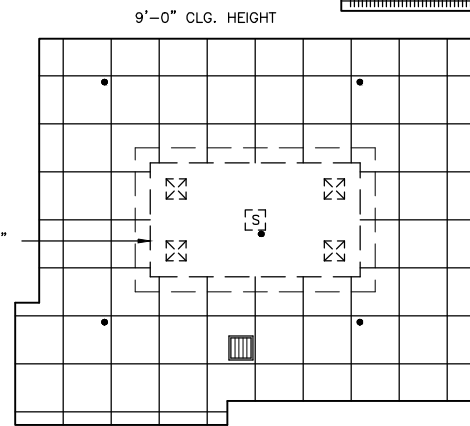
GLACIER FIRE STATION KITCHEN & CLASSROOM RENOVATION

1700 Crest Avenue
Juneau, Alaska 99801

DEMOLITION NOTES: (COORD. WITH ELEC.)

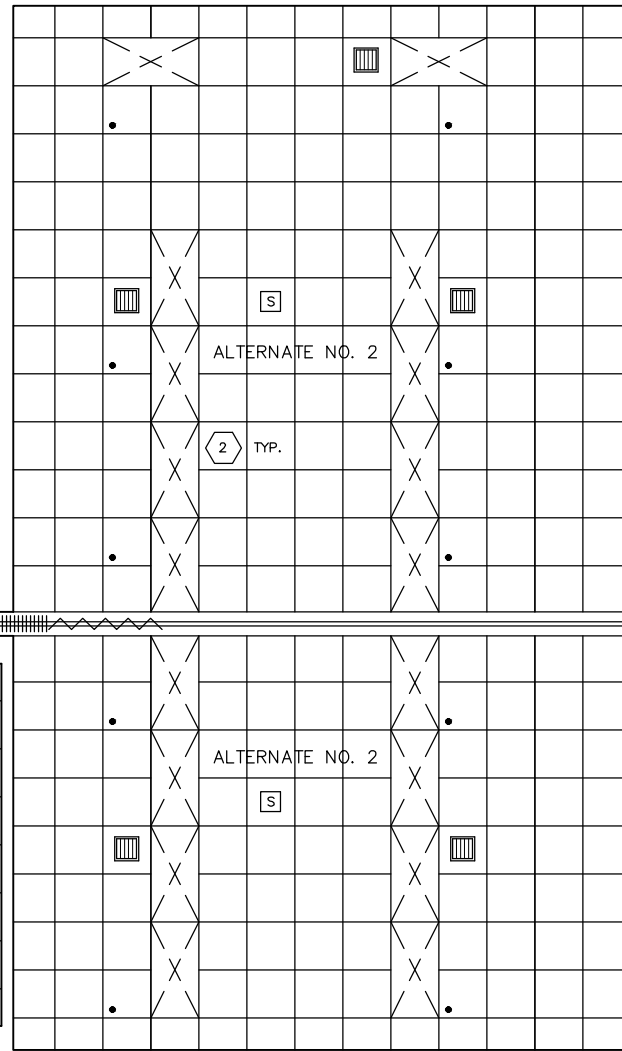
- 1 REMOVE EXISTING LOWERED PORTION OF THE CEILING IN ITS ENTIRETY. REMOVAL INCLUDES FRAMING, GWB, LIGHTS, SPEAKER, SPRINKLER, ETC.
- 2 REMOVE EXISTING FLUORESCENT LIGHTS.

1
LOWER CLG.
HEIGHT = 7'-4"



A DEMO. REFL. CLG. PLAN
SCALE: 1/4" = 1'-0" D:\CAD\1308

9'-6" CLG. HEIGHT



REMOVE EXISTING FLUORESCENT LIGHT FIXTURE, SALVAGE FOR OWNER'S REUSE



EXISTING FLUORESCENT LIGHT FIXTURE TO REMAIN, (N) INDICATES NEW OR RELOCATED



EXISTING RETURN AIR VENT TO REMAIN, (N) INDICATES NEW OR RELOCATED



EXISTING SUPPLY AIR DIFFUSER TO REMAIN, (N) INDICATES NEW OR RELOCATED



ITEMS TO BE REMOVED



EXISTING SPRINKLER HEAD TO REMAIN, (N) INDICATES NEW OR RELOCATED

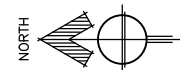
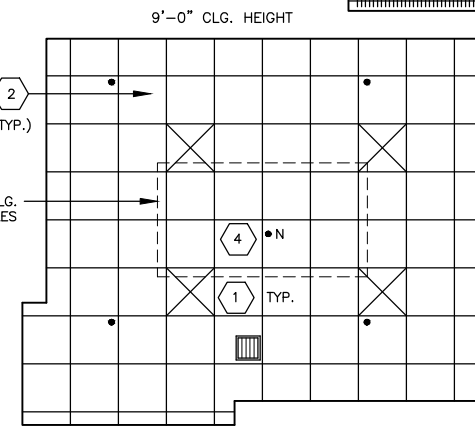


EXISTING SPEAKER TO REMAIN, (N) INDICATES NEW OR RELOCATED

NEW WORK NOTES: (COORD. WITH ELEC.)

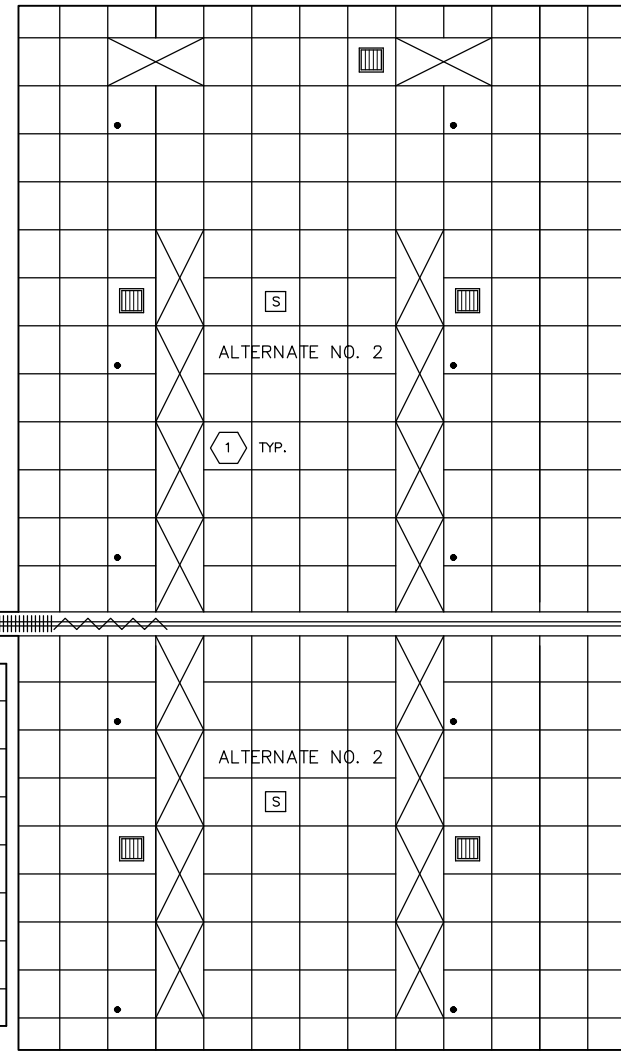
- 1 SUPPLY & INSTALL NEW LIGHTING (SEE ELEC.)
- 2 CLEAN EXIST. CLG. GRID & TILES.
- 3 SUPPLY & INSTALL NEW CEILING TILES AND GRID TO MATCH EXISTING.
- 4 RAISE EXIST. SPRINKLER HEAD (SEE MECH.)

3
AREA OF NEW CLG.
GRID & TILES



B NEW REFL. CLG. PLAN
SCALE: 1/4" = 1'-0" D:\CAD\1308

9'-6" CLG. HEIGHT



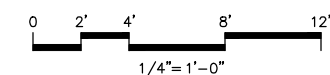
Number	Date	By	Description of Revisions

Sheet Title
DEM. REFL. CLG. PLAN
NEW REFL. CLG. PLAN

Scale AS SHOWN (HALF SCALE AT 11X17)

Designed AER Drawn AER
Date APRIL 1, 2016 Checked AER
Approved By AER Job Number 1308

Sheet Number



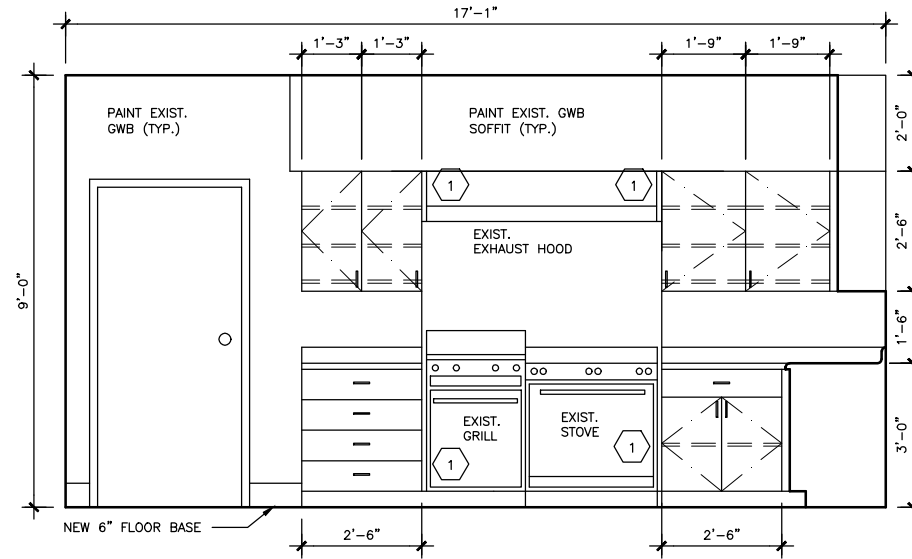
INTERIOR ELEVATIONS

KITCHEN 118

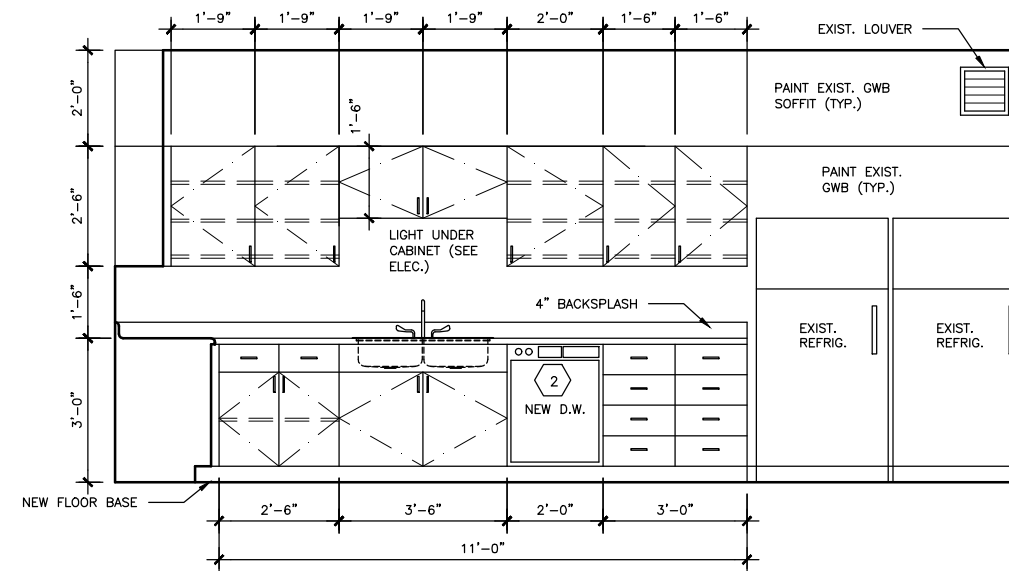
1/2" = 1'-0"

1 REINSTALL EXIST. S.S. HEAT SHIELDS AT BOTH SIDES OF EXIST. HOOD, GRILL AND STOVE

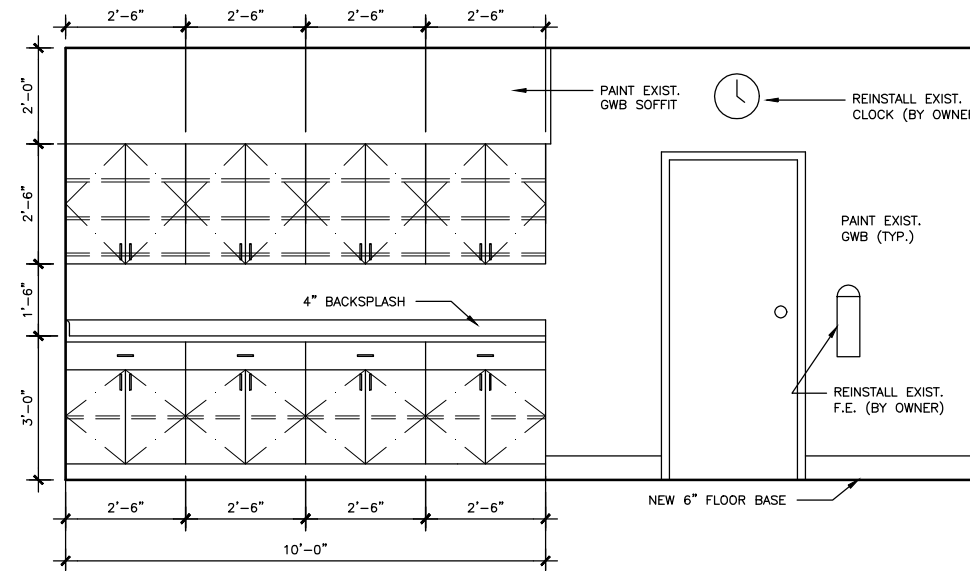
2 CASEWORK & COUNTERTOP. USE ONLY MOISTURE RESISTANT MATERIALS ADJACENT TO DISHWASHER SIDES AND TOP.



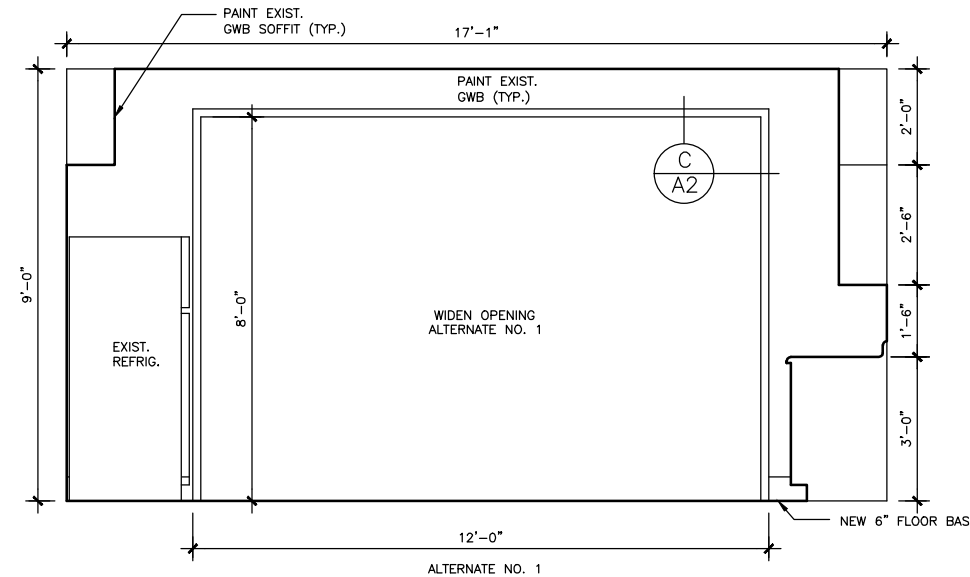
① NORTH



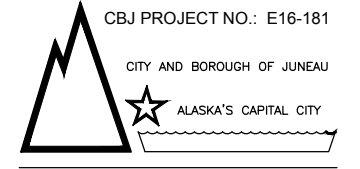
② EAST



③ WEST



④ SOUTH



CBJ Bldg. Permit No. _____

CONSTRUCTION DOCUMENTS
GLACIER FIRE STATION KITCHEN & CLASSROOM RENOVATION

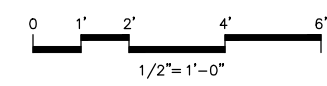
1700 Crest Avenue
 Juneau, Alaska 99801

Number	Date	By	Description of Revisions

Sheet Title
INTERIOR ELEVATIONS

Scale AS SHOWN (HALF SCALE AT 11X17)
 Designed AER Drawn AER
 Date APRIL 1, 2016 Checked AER
 Approved By AER Job Number 1308

Sheet Number

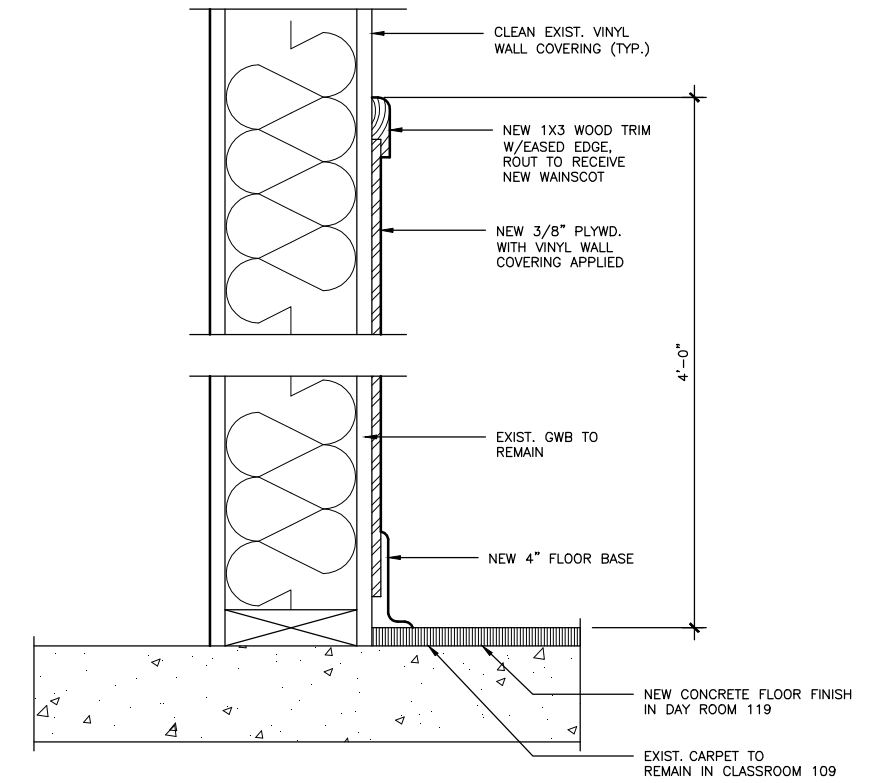
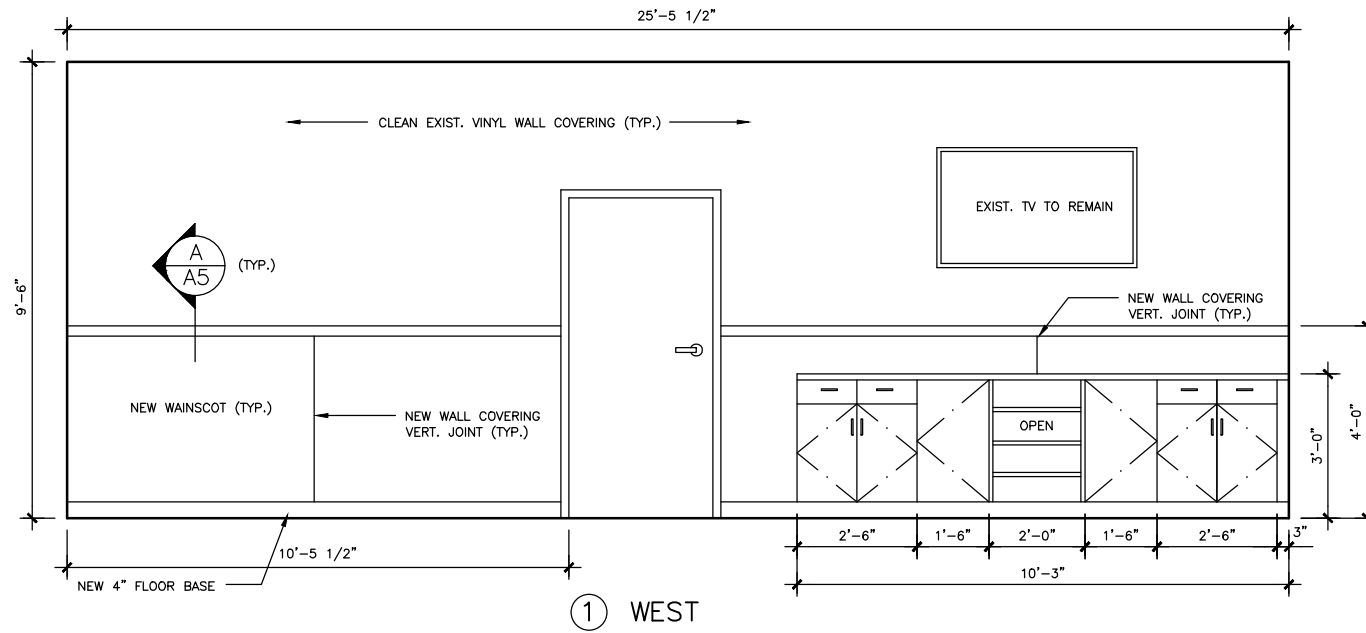


INTERIOR ELEVATIONS

DAY ROOM 119

ALTERNATE NO. 2 UNLESS OTHERWISE NOTED

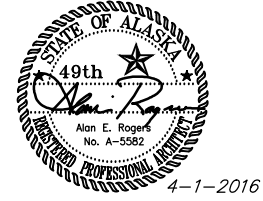
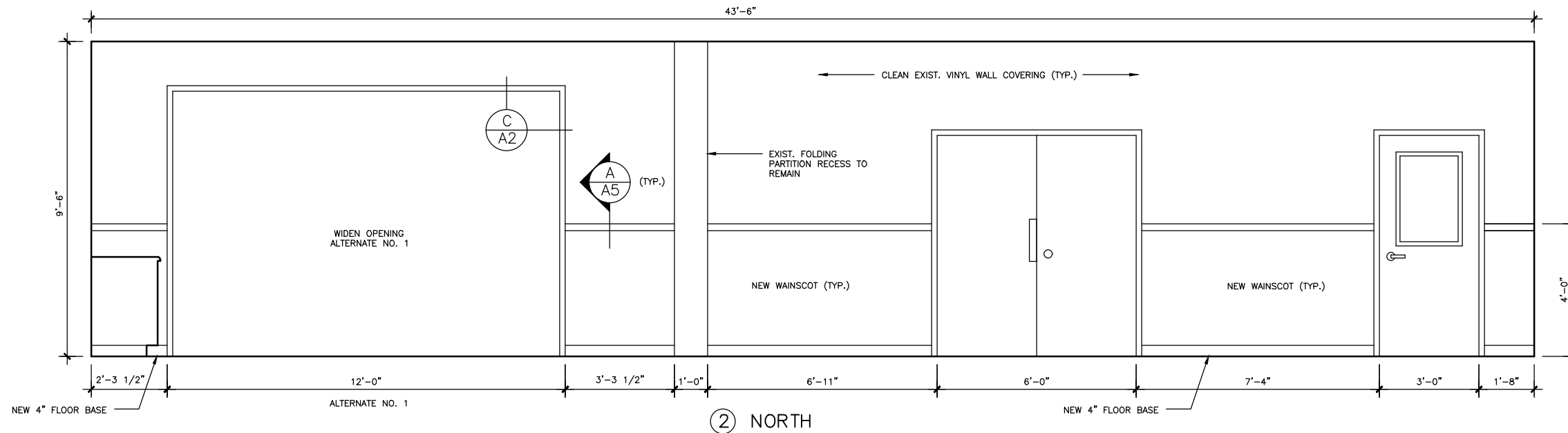
1/2" = 1'-0"



A WAINSCOT DETAIL
SCALE: 3" = 1'-0" D:\CAD\1308

DAY ROOM 119 - CLASSROOM 109

1/2" = 1'-0"



CBJ Bldg. Permit No. _____

CONSTRUCTION DOCUMENTS
GLACIER FIRE STATION KITCHEN & CLASSROOM RENOVATION

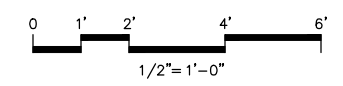
1700 Crest Avenue
Juneau, Alaska 99801

Number	Date	By	Description of Revisions

Sheet Title
**INTERIOR ELEVATIONS
DETAIL**

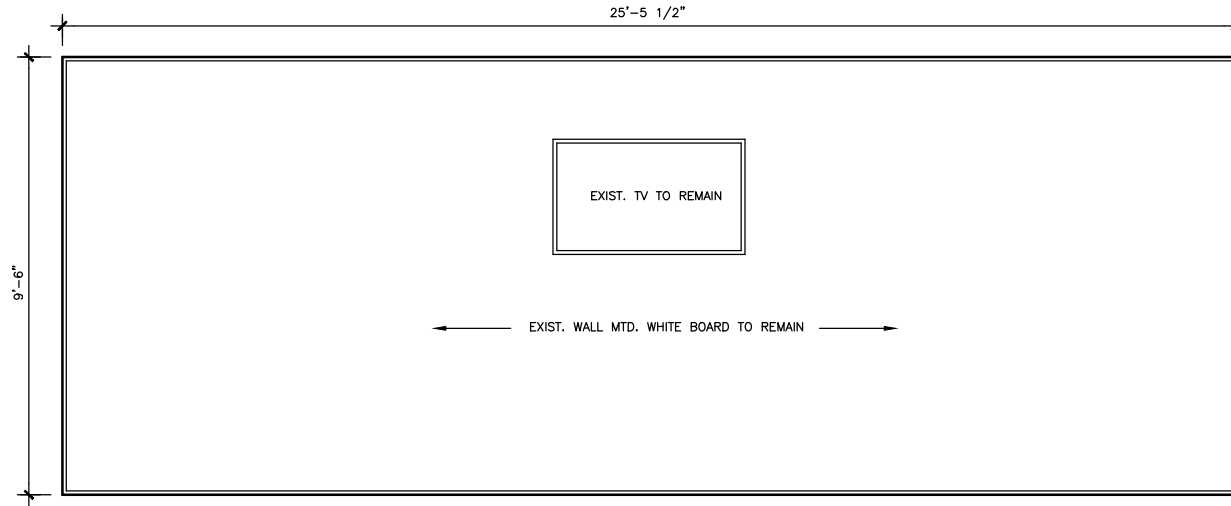
Scale AS SHOWN (HALF SCALE AT 11X17)
Designed AER Drawn AER
Date APRIL 1, 2016 Checked AER
Approved By AER Job Number 1308

Sheet Number



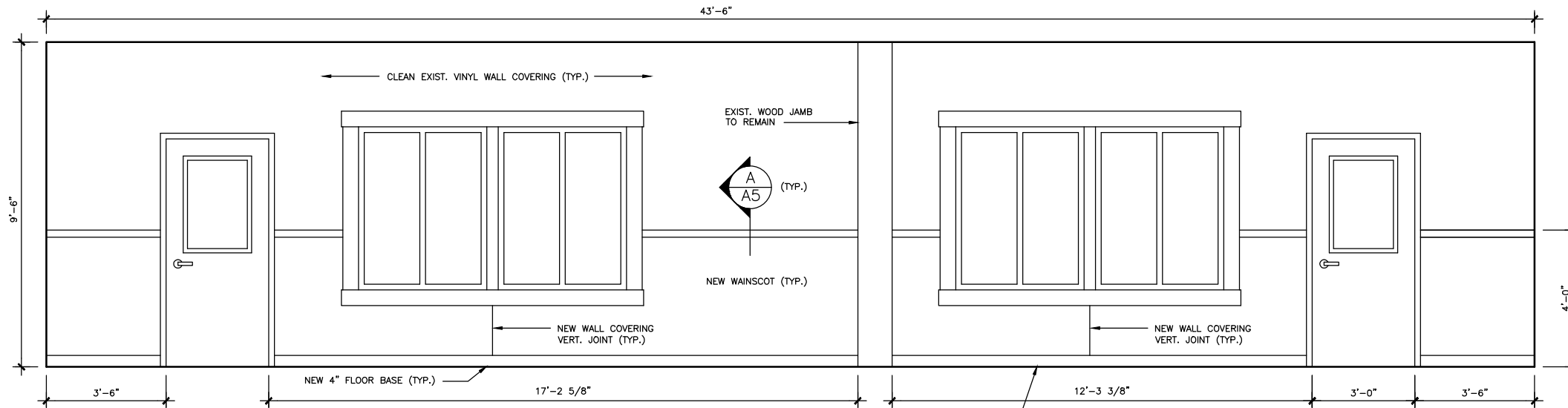
INTERIOR ELEVATIONS

CLASSROOM 109 ALTERNATE NO. 2
 $1/2" = 1'-0"$

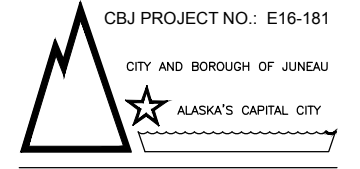


③ EAST

DAY ROOM 119 – CLASSROOM 109 ALTERNATE NO. 2 UNLESS OTHERWISE NOTED
 $1/2" = 1'-0"$



④ SOUTH



CBJ Bldg. Permit No. _____

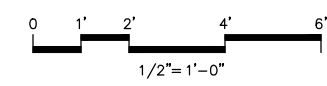
CONSTRUCTION DOCUMENTS
GLACIER FIRE STATION KITCHEN & CLASSROOM RENOVATION
 1700 Crest Avenue
 Juneau, Alaska 99801

Number	Date	By	Description of Revisions

Sheet Title
INTERIOR ELEVATIONS

Scale AS SHOWN (HALF SCALE AT 11X17)
 Designed AER Drawn AER
 Date APRIL 1, 2016 Checked AER
 Approved By AER Job Number 1308

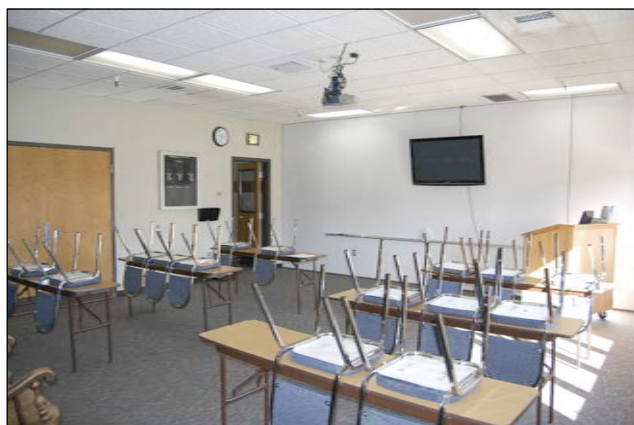
Sheet Number



EXISTING CONDITION PHOTOS (NOT TO SCALE)



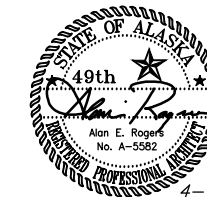
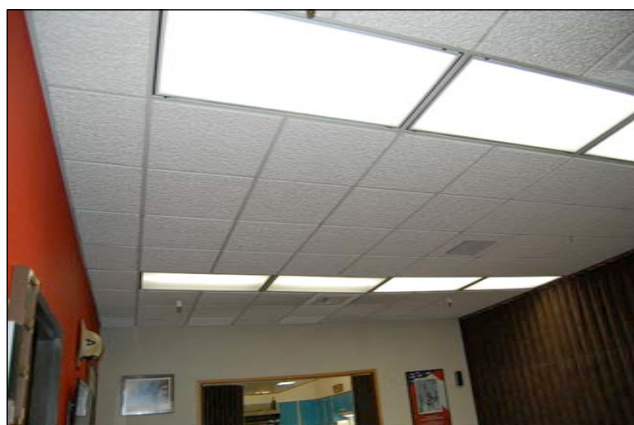
KITCHEN



CLASSROOM



CLASSROOM



4-1-2016

CBJ Bldg. Permit No. _____

CONSTRUCTION DOCUMENTS
GLACIER FIRE STATION KITCHEN &
CLASSROOM RENOVATION

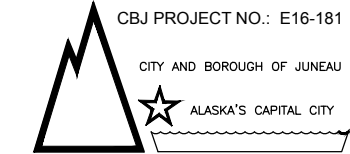
1700 Crest Avenue
Juneau, Alaska 99801

Number	Date	By	Description of Revisions

Sheet Title
EXIST. CONDITION
PHOTOS

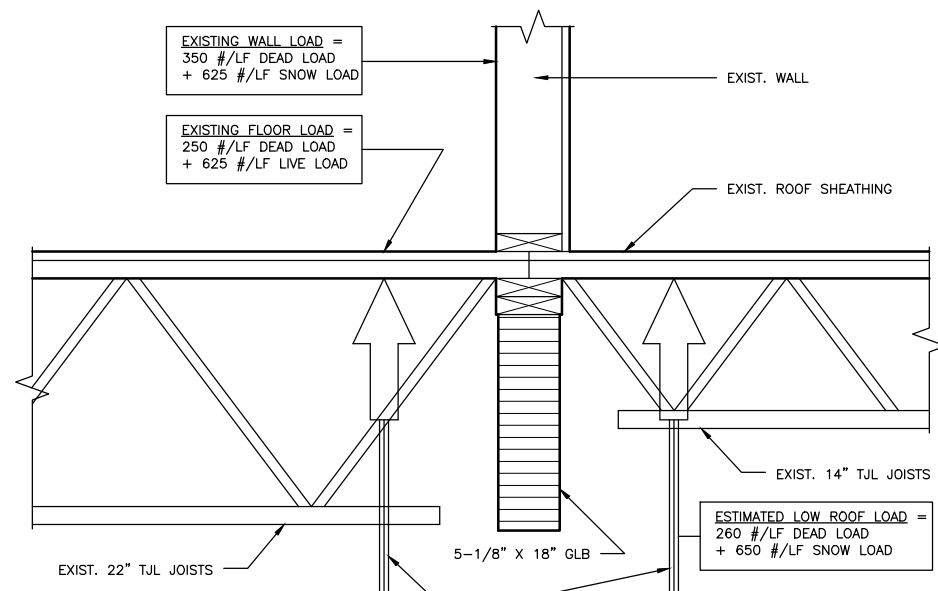
Scale AS SHOWN (HALF SCALE AT 11X17)
Designed AER Drawn AER
Date APRIL 1, 2016 Checked AER
Approved By AER Job Number 1308

Sheet Number



CBJ Bldg. Permit No. _____

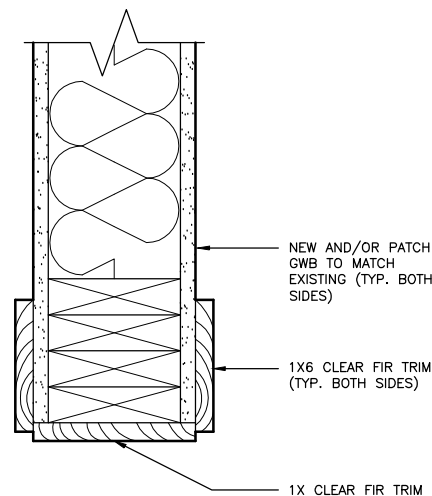
CONSTRUCTION DOCUMENTS
GLACIER FIRE STATION KITCHEN & CLASSROOM RENOVATION
 1700 Crest Avenue
 Juneau, Alaska 99801



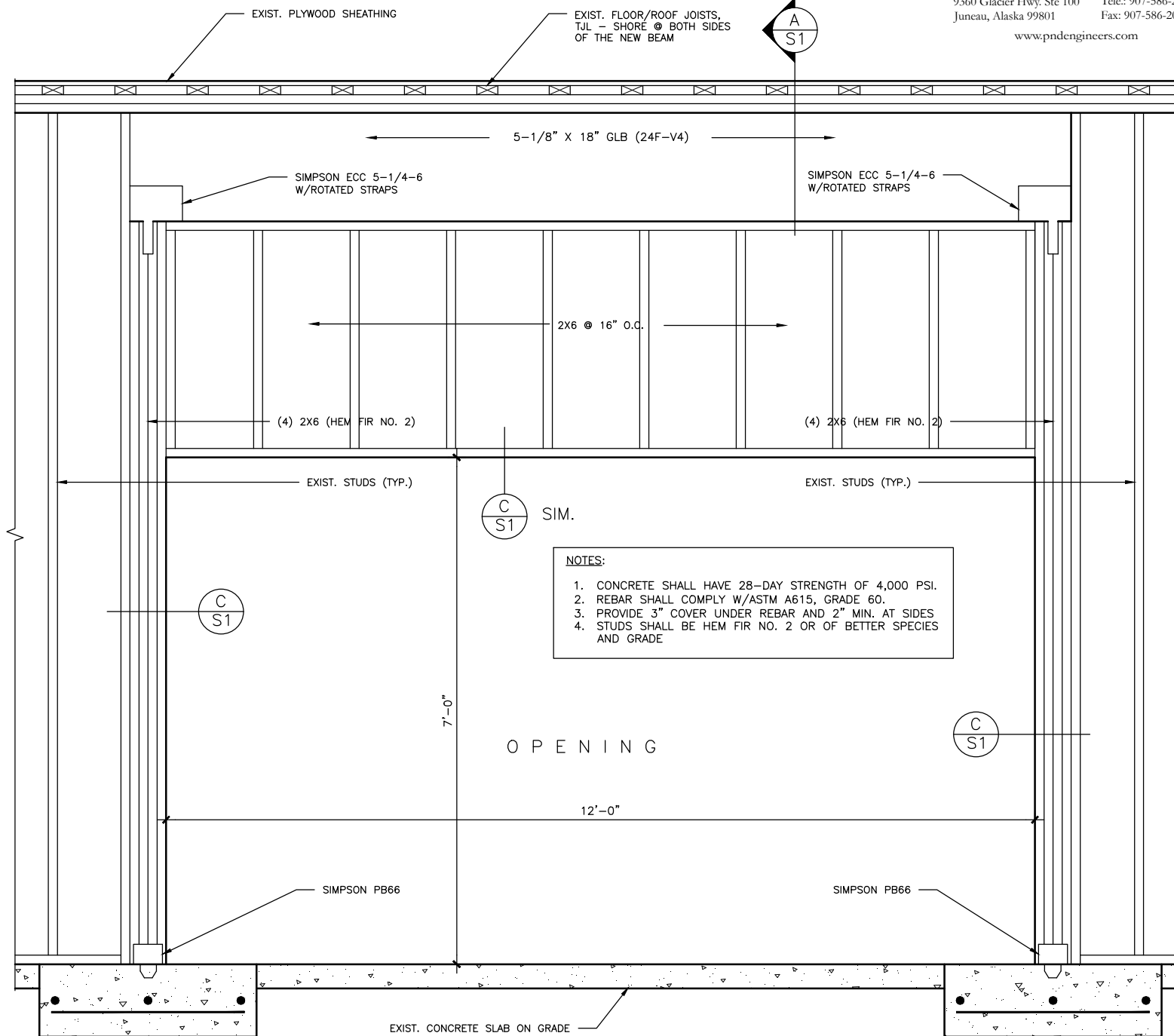
SHORE EXISTING FLOOR JOISTS TO SUPPORT ALL LIVE AND DEAD LOADS PRIOR TO REMOVING EXISTING FRAMING AND UNTIL PERMANENT FRAMING IS IN PLACE AND COMPLETE.

- NOTES:**
 1. SUBMIT SHORING PLAN FOR REVIEW.

A WALL SECTION
 SCALE: 1-1/2" = 1'-0" D:\CAD\1308



C HEAD/JAMB DETAIL
 SCALE: 3" = 1'-0" D:\CAD\1308



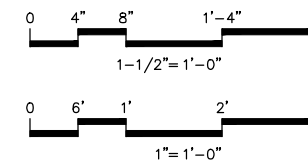
- NOTES:**
 1. CONCRETE SHALL HAVE 28-DAY STRENGTH OF 4,000 PSI.
 2. REBAR SHALL COMPLY W/ASTM A615, GRADE 60.
 3. PROVIDE 3" COVER UNDER REBAR AND 2" MIN. AT SIDES
 4. STUDS SHALL BE HEM FIR NO. 2 OR OF BETTER SPECIES AND GRADE

B OPENING FRAMING
 SCALE: 1" = 1'-0" D:\CAD\1308

12"x3'-0"x3'-0" CONCRETE FOOTING W/(3) NO. 5 BAR EA. WAY

12"x3'-0"x3'-0" CONCRETE FOOTING W/(3) NO. 5 BAR EA. WAY

ALTERNATE NO. 1



Number	Date	By	Description of Revisions

Sheet Title
STRUCTURAL DETAILS ALTERNATE NO. 1

Scale AS SHOWN (HALF SCALE AT 11X17)
 Designed CG Drawn AER
 Date APRIL 1, 2016 Checked CG
 Approved By CG Job Number 1308

Sheet Number

ABBREVIATIONS:

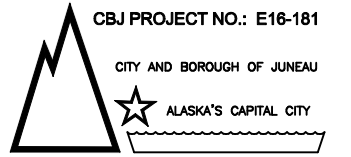
CB	CHEMICAL BOTTLE
CW	COLD WATER
DIA, Ø	DIAMETER
DFU	DRAINAGE FIXTURE UNIT
DW	DISHWASHER
DWV	DRAIN, WASTE & VENT
EQ	EQUIPMENT
°F, F	DEGREES FAHRENHEIT
FD	FLOOR DRAIN
FF	FINISHED FLOOR
FIX	FIXTURE
FPM	FEET PER MINUTE
FT	FEET
GA	GAUGE
G.C.	GENERAL CONTRACTOR
GD	GARBAGE DISPOSAL
GPM	GALLONS PER MINUTE
H	HEIGHT
HP	HORSEPOWER
HW	HOT WATER
I.E.	INVERT ELEVATION
IN	INCHES
IN.WG	INCHES WATER GAUGE
LB	POUNDS
MAX	MAXIMUM
MIN	MINIMUM
MFG	MANUFACTURER
N.I.C.	NOT IN CONTRACT
O&M	OPERATION AND MAINTENANCE
PH	PHASE
PSI	POUNDS PER SQUARE INCH
REF	REFERENCE
SPEC.	SPECIFICATION SECTION
TYP	TYPICAL
V	VENT, VOLTS
W	WASTE, WIDTH
WHA	WATER HAMMER ARRESTOR
W/	WITH
W&V	WASTE AND VENT
#	NUMBER

(E)	EXISTING TO REMAIN
(N)	NEW
(R)	REPLACE EXISTING
(X)	DEMOLISH EXISTING

GENERAL NOTES AND SPECIFICATIONS:

1. CODE: COMPLETED SYSTEMS SHALL MEET OR EXCEED THE REQUIREMENTS OF APPROPRIATE REGULATORY AGENCIES AND CURRENT CODES AS AMENDED BY STATE AND LOCAL GOVERNMENT INCLUDING: INT'L BUILDING CODE (IBC), INT'L MECHANICAL CODE (IMC), UNIFORM PLUMBING CODE (UPC), INT'L FIRE CODE (IFC), NATIONAL FIRE PROTECTION AGENCY (NFPA), NATIONAL ELECTRIC CODE (NEC). SEE ARCHITECTURAL PLANS FOR CODE YEAR.
2. ALL DEVICES AND EQUIPMENT SHALL BE UL LISTED. PRODUCT SAFETY STANDARDS SHALL BE DETERMINED THROUGH INDEPENDENT TESTING OF A NATIONALLY RECOGNIZED TESTING LABORATORY (NRTL) RECOGNIZED BY THE OCCUPATIONAL SAFETY AND HEALTH ADMINISTRATION (OSHA).
3. PLANS: THE DRAWINGS ARE PARTLY DIAGRAMMATIC. APPROXIMATE SIZES AND LOCATIONS OF BUILDING, EQUIPMENT, ETC. ARE SHOWN EXCEPT AS NOTED OR DIMENSIONED. SEE ARCHITECTURAL PLANS FOR REFERENCE. REFERENCE DIMENSIONS (REF) SHOW APPROXIMATE DISTANCES AND ARE NOT TO BE USED FOR LOCATING EQUIPMENT, ETC. VERIFY ALL REF DIMENSION WITH MEASUREMENTS TAKEN ON SITE AS NEEDED.
4. SUBSTITUTIONS: EQUIPMENT SHOWN REPRESENTS THE STANDARD OF QUALITY AND PERFORMANCE REQUIRED BY THE DESIGN. EQUAL OR BETTER EQUIPMENT MAY BE SUBSTITUTED WITH ENGINEER'S APPROVAL.
5. PERMITS: CONTRACTOR SHALL SECURE AND PAY FOR ALL NECESSARY PERMITS AND FEES.
6. INSURANCE: CONTRACTOR MUST HAVE IN FORCE BUILDERS' ALL RISK INSURANCE, WORKERS' COMPENSATION INSURANCE AND GENERAL LIABILITY INSURANCE AT ALL TIMES FOR ALL WORKERS WHILE WORKING ON THE PROJECT.
7. SUBMITTALS: SUBMIT SHOP DRAWINGS AS SPECIFIED OR NOTED FOR WORK PRIOR TO CONSTRUCTION FOR ENGINEER'S REVIEW.
8. SUBMITTALS: CONTRACTOR TO PROVIDE SPECIFICATION INFORMATION FOR ALL NEW EQUIPMENT TO BE INSTALLED PRIOR TO CONSTRUCTION FOR ENGINEER'S REVIEW.
9. ALL WORK TO BE PERFORMED TO CURRENT CODE AND INDUSTRY STANDARDS BY WORKERS WITH APPROPRIATE SKILLS AND TRAINING. INDUSTRY STANDARDS AND COMMON PRACTICES MAY NOT BE SHOWN OR OTHERWISE REPRESENTED ON THE PLANS, BUT THEY ARE REQUIRED IN THE WORK. ALL WORK AND METHODS TO BE IN ACCORDANCE WITH OSHA REGULATIONS.
10. PROVIDE ALL WORK, EQUIPMENT, TOOLS, MATERIALS, ETC. TO COMPLETE THE PROJECT.
11. INSTALL ALL MATERIALS AND EQUIPMENT PER MANUFACTURER'S INSTRUCTIONS AND IN THE BEST PRACTICES OF THE CRAFT. ALL MATERIALS AND EQUIPMENT TO BE NEW AND UNUSED.
12. COORDINATE SELECTION AND PROVISION OF EQUIPMENT WITH ACTUAL CONSTRUCTION CONDITIONS.
13. OBTAIN ENGINEER'S APPROVAL OF ALL PRODUCTS PRIOR TO ORDERING OR INSTALLING ANY PART OF THE SYSTEM.
14. SALVAGE EQUIPMENT: PRESENT ALL REMOVED EQUIPMENT TO THE OWNER. THE OWNER RETAINS THE RIGHT TO CLAIM ANY AND ALL SALVAGED EQUIPMENT AND MATERIALS. THOSE ITEMS NOT CLAIMED BY OWNER ARE TO BY HAULED AWAY AND PROPERLY DISPOSED OF BY CONTRACTOR.
15. BRING CONFLICTS BETWEEN DESIGN PLANS, MANUFACTURER'S SPECIFICATIONS, INSTRUCTIONS AND/OR CODE REQUIREMENTS TO THE ENGINEER'S ATTENTION FOR RESOLUTION.
16. ALL COMPLETED SYSTEMS TO BE ACCESSIBLE FOR ADJUSTMENT AND MAINTENANCE.
17. COORDINATE WORK WITH APPROPRIATE TRADES.
18. COORDINATE WORK SCHEDULE WITH BUILDING OWNER AND BUILDING OCCUPANTS.
19. MAKE ALL EXTERIOR PENETRATIONS WATERTIGHT AND WEATHERPROOF.
20. DEMONSTRATE FULLY THE PLUMBING AND MECHANICAL SYSTEMS TO OWNER AT CONCLUSION OF CONSTRUCTION.
21. COORDINATE EXTERIOR FLASHING REQUIREMENTS FOR THE ROOF AND WALL PRODUCTS WITH THE GENERAL CONTRACTOR
22. ALL MATERIALS, EQUIPMENT AND DEVICES MUST BE APPROPRIATELY RATED FOR THE INTENDED SERVICE.
23. PROPERLY PATCH TO MATCH EXISTING STRUCTURE AND FINISHES AS NEEDED.
24. ALL WORK SUBJECT TO OWNER'S AND ENGINEER'S REVIEW AND APPROVAL.
25. INSTRUCT BUILDING PERSONNEL AND OWNER IN OPERATION AND MAINTENANCE OF SYSTEMS.
26. PROVIDE O&M MANUAL INCLUDING MFG SPECIFICATIONS, O&M INSTRUCTIONS, WARRANTY INFORMATION FOR EACH EQUIPMENT ITEM, SCHEMATIC DIAGRAM OF CONTROLS, SYSTEM AS-BUILT, SOURCE OF SUPPLY FOR SPARE PARTS AND SERVICE INFORMATION.
27. AS-BUILT INFORMATION TO INCLUDE HAND WRITTEN NOTES, SKETCHES AND MARKS ON CONSTRUCTION DOCUMENTS; CAPTURE ALL INSTALLED CHANGES TO DESIGN PLANS.
28. PROVIDE O&M MANUALS AND AS-BUILT DOCUMENTS TO OWNER BEFORE FINAL COMPLETION.
29. WARRANTY: ALL WORK PERFORMED UNDER THIS CONTRACT TO BE FREE FROM DEFECTS IN MATERIALS AND WORKMANSHIP FOR A PERIOD OF ONE YEAR FROM ACCEPTANCE. ANY FAULTY MATERIALS OR WORKMANSHIP FOUND DURING THIS WARRANTY PERIOD SHALL BE REPAIRED OR REPLACED TO THE SATISFACTION OF THE OWNER.
30. ELECTRICAL WORK: ALL ELECTRICAL WORK IS TO BE PERFORMED BY A LICENSED ELECTRICIAN PER THE CURRENT NATIONAL ELECTRICAL CODE (NEC). SEE ELECTRICAL PLANS.
33. NOT USED
34. COORDINATE ALL MECHANICAL AND PLUMBING PENETRATIONS OF FIRE RATED ASSEMBLIES TO ENSURE PROPER ALLOWANCES ARE PROVIDED FOR INSTALLATION OF FIRESTOPPING MATERIALS AND SYSTEMS. FIRESTOPPING BY OTHERS.
35. ALL WORK IS SUBJECT TO THE REQUIREMENTS OF THE CONTRACT AND TECHNICAL SPECIFICATIONS.
36. SEE ARCHITECTURAL PLANS REGARDING EXISTING HAZARDOUS MATERIALS. COORDINATE WORK WITH GENERAL CONTRACTOR AS NEEDED.

PLUMBING LEGEND	
SYMBOL	DESCRIPTION
	WATER HAMMER ARRESTOR
	ANGLE STOP
	COLD WATER
	HOT WATER
	WASTE
	VENT
	STRAINER



4-1-2016

CBJ Bldg. Permit No. _____

CONSTRUCTION DOCUMENTS
GLACIER FIRE STATION KITCHEN & CLASSROOM RENOVATION

1700 Crest Avenue
Juneau, Alaska 99801

Number Date By Description of Revisions

Sheet Title
LEGEND, NOTES, ABBREVIATIONS, SCHEDULES

Scale AS SHOWN
Designed CC Drawn CC
Date APRIL 1, 2016 Checked CC
Approved By CC Job Number

Sheet Number

M1 OF 2

PLUMBING GENERAL NOTES			
1. PIPING MATERIAL SCHEDULE:			
PIPING	LOCATION	MATERIAL	JOINT
COLD WATER:	BELOW GRADE	COPPER/K	NO LEAD BRAZE
COLD WATER:	ABOVE GROUND	COPPER/L	NO LEAD SOLDER
HOT WATER:	ABOVE GROUND	COPPER/L	NO LEAD SOLDER
WASTE:	FIRST FLOOR	CAST IRON	NO-HUB
TAILPIECE, TRAP, BRANCH	UNDER SINK	BRASS/CHROME	20 GA
2. NOT USED			
3. PLANS ARE SCHEMATIC AND DO NOT SHOW EXACT ROUTING OR EVERY OFFSET WHICH MAY BE REQUIRED. PRIOR TO COMMENCING WORK, COORDINATE WITH ALL TRADES FOR CLEARANCE REQUIREMENTS.			
4. MATERIALS, METHODS AND INSTALLATION SHALL COMPLY WITH THE PROVISIONS OF THE 2009 EDITION OF THE UNIFORM PLUMBING CODE.			
5. SLOPE ALL WASTE PIPING AT 2% UNLESS OTHERWISE NOTED ON DRAWINGS. OBTAIN APPROVAL FROM CODE AUTHORITY BEFORE INSTALLING PIPING AT LESS THAN 2% AS REQUIRED.			
6. HANGERS AND SUPPORTS FOR PIPING SHALL BE IN ACCORDANCE WITH SECTION 314 OF THE UNIFORM PLUMBING CODE.			
7. PIPING PENETRATIONS OF FIRE RATED WALLS OR FLOORS SHALL BE SLEEVED AND FIRE STOPPED WITH LISTED MATERIALS SO AS TO MAINTAIN THE INTEGRITY AND RATING OF THE FLOOR OR WALL.			
8. SEE ARCHITECTURAL PLANS FOR EXACT PLUMBING FIXTURE ROUGH-IN LOCATIONS AND ELEVATIONS.			
9. NOT USED			
10. PROVIDE DIELECTRIC CONNECTIONS BETWEEN DISSIMILAR METALS.			
11. NOT USED			
12. PLUMBING EQUIPMENT, VALVES AND TRAP PRIMERS SHALL BE LOCATED IN EASILY ACCESSIBLE LOCATIONS. UNLESS SHOWN ON ARCHITECTURAL DRAWINGS. REQUIRED ACCESS PANELS SHALL BE PROVIDED BY THE PLUMBING CONTRACTOR AND INSTALLED BY THE GENERAL CONTRACTOR.			
13. LOCATE AND PROVIDE ALL REQUIRED FLOOR, WALL AND FOOTING SLEEVES.			
14. ALL PIPING, EQUIPMENT, FITTINGS ETC IN THE DRINKING WATER PIPING SYSTEM MUST MEET THE 2014 SAFE DRINKING WATER ACT. MUST MEET NSF 61-G.			
15. ALL ISOLATION VALVES TO BE FULL PORT BALL VALVES			
16. INSTALL ESCUTCHEON PLATES AT ALL PIPING WALL PENETRATIONS			
17. DISINFECT DOMESTIC WATER PIPING AND EQUIPMENT PER UPC.			

PLUMBING FIXTURE SCHEDULE							
SYMBOL	DESCRIPTION	MANUFACTURER & MODEL NUMBERS	W	V	CW	HW	REMARKS
KS	KITCHEN SINK	SINK: ELKAY #DXR33225, DOUBLE BOWL, TOP MOUNT, STAINLESS STEEL FAUCET: MOEN #8244, (2) WRIST BLADES, ADA, BRASS/CHROME, GOOSENECK SUPPLIES: BRASSCRAFT #KTCR****, BRASS/CHROME, 1/4-TURN ANGLE BALL STOP	1 1/2"	1 1/2"	1/2"	1/2"	ADD HOLES TO SINK TOP FOR SIDE SPRAY AND DISHWASHER AIR-GAP-DEVICE
IM	ICE MAKER	TUBING: PEX SUPPLIES: BRASSCRAFT #KTCR**** (SIMILAR)					EXISTING REFRIGERATOR ICE MAKER, (2) REFRIGERATORS MATCH EXISTING SUPPLY TUBING SIZES

NOTE: MINIMUM TRAP AND TRAP ARM SIZES SHOWN. 2" MIN DRAIN REQUIRED BEYOND TRAP ARM FOR SINKS

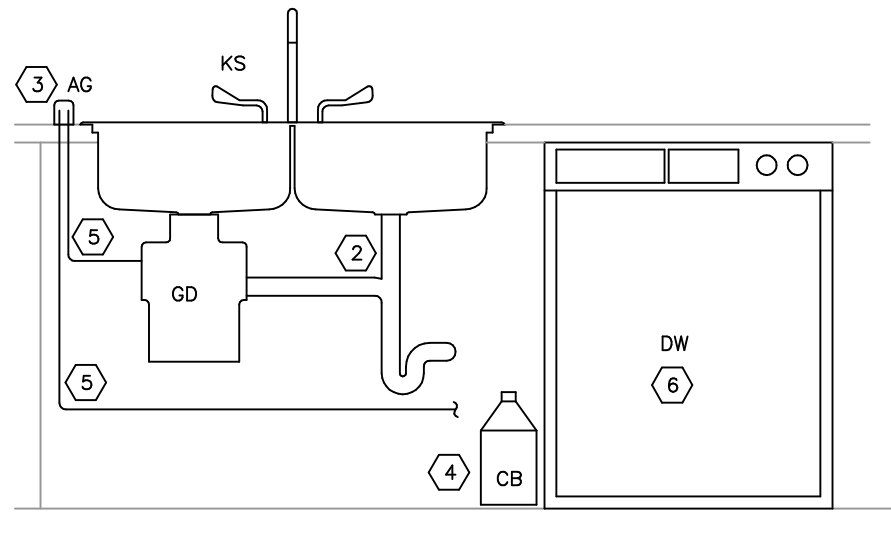
PLUMBING EQUIPMENT SCHEDULE				
SYMBOL	DESCRIPTION	MAKE/MODEL	VOLTS, PHASE, POWER	NOTES
DW	DISHWASHER (COMMERCIAL GRADE)	HOBART #LXEH-2	208/240(3 WIRE), 1PH, 30.5AMPS	HOBART #00-942097 DRAIN WATER TEMPERING KIT REQUIRED: KIT INSTALLED BY MFG CERTIFIED TECHNICIAN. 1/2" HW - DISHWASHER SUPPLY 1/2" CW - DRAIN WATER TEMPERING KIT STRAINER AND WHA REQUIRED HW & CW.
GD	GARBAGE DISPOSAL	INSINKERATOR #PRO750	120V, 1PH, 3/4HP	SINK MOUNTED POWER CORD DISHWASHER HOSE CONNECTION
AG	AIR GAP	DEARBORN BRASS #DB-CD-3		COPPER CONSTRUCTION WITH CHROME PLATED METAL CAP
WHA	WATER HAMMER ARRESTOR	WATTS #LF15M2-AS		1/2" SWEAT SIZE A, 1-11 FIXTURE UNITS MEETS ASSE 1010

MECHANICAL DRAWINGS LIST	
SHEET	TITLE
M1	LEGEND, NOTES, ABBREVIATIONS, SCHEDULES
M2	PLUMBING PLANS: DEMOLITION & NEW WORK; DETAILS



WASTE PIPING NOTES:

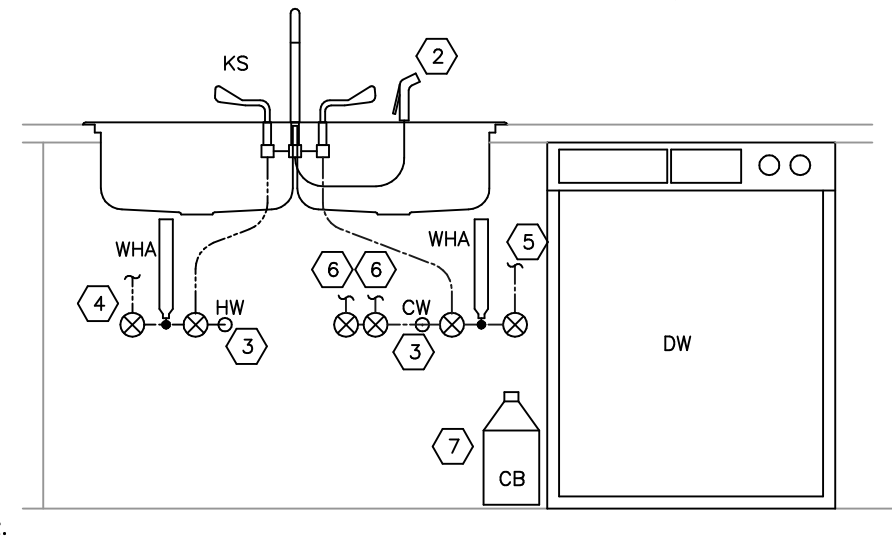
1. WATER PIPING NOT SHOWN FOR CLARITY.
2. CHROME PLATED BRASS TUBULAR TAILPIECE, P-TRAP, BRANCH.
3. AIR GAP DEVICE MOUNTED IN SINK TOP (NOT SHOWN THIS WAY FOR CLARITY). INSTALL HOLE IN SINK TOP FOR AIR GAP DEVICE. MUST BE ABOVE FLOOD LEVEL OF SINK.
4. ALLOW PROPER SPACE FOR DISHWASHER CHEMICAL BOTTLES, ABOUT 8" WIDTH FROM DISHWASHER. VERIFY BOTTLE AND CHEMICAL PIPING HEIGHT REQUIREMENTS WITH MFG'S INSTALLATION INSTRUCTIONS.
5. INSTALL HOSE RATED FOR 180°F FROM DISHWASHER DRAIN TO AIR-GAP-DEVICE TO THE GARBAGE DISPOSAL.
6. OPERATE THE DISHWASHER AND VERIFY THAT THE DRAIN DISCHARGE WATER TEMPERATURE IS BELOW 140°F.



C UNDERSINK WASTE PIPING
NO SCALE

WATER PIPING NOTES:

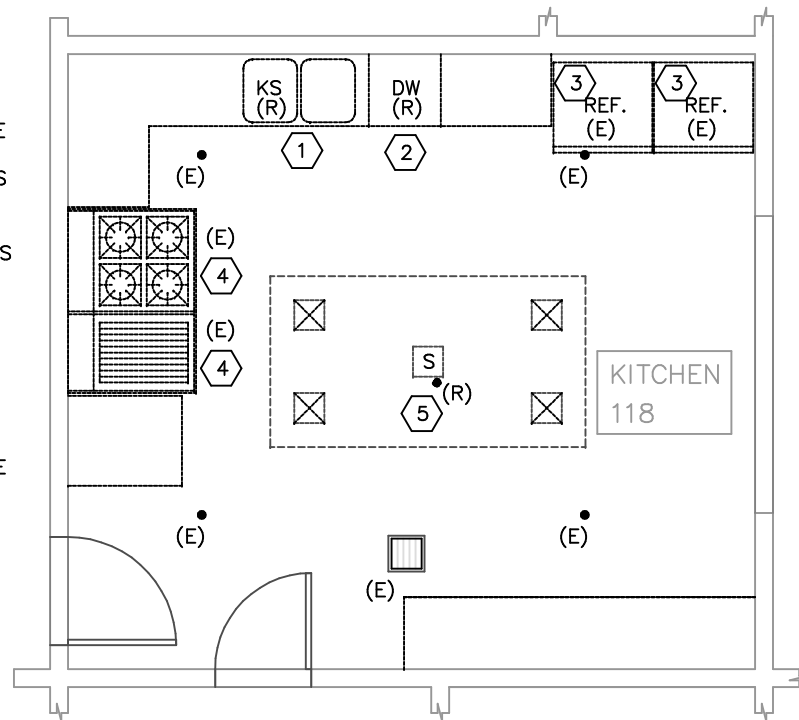
1. WASTE PIPING NOT SHOWN FOR CLARITY.
2. INSTALL HOLE IN SINK TOP FOR SIDE SPRAY NOZZLE.
3. INSTALL NEW 3/4" HW & 3/4" CW MANIFOLD CONNECTED TO EXISTING LINES WITHIN THE WALL. COORDINATE WALLBOARD PATCHING WITH THE GENERAL CONTRACTOR.
4. 3/4" HW SUPPLY TO DISHWASHER. INSTALL INLINE STRAINER PER DW MFG INSTRUCTIONS.
5. 1/2" CW SUPPLY TO DISHWASHER. INSTALL INLINE STRAINER. COORDINATE FITTING TYPE WITH MANUFACTURER'S SUPPLIED HOSE.
6. NEW ANGLE STOP AND PEX LINE TO REFRIGERATOR ICE MACHINE. MATCH EXISTING LINE SIZE.
7. ALLOW PROPER SPACE FOR DISHWASHER CHEMICAL BOTTLES, ABOUT 8" WIDTH FROM DISHWASHER. VERIFY BOTTLE AND CHEMICAL PIPING HEIGHT REQUIREMENTS WITH MFG'S INSTALLATION INSTRUCTIONS.



D UNDERSINK WATER PIPING
NO SCALE

DEMOLITION NOTES:

1. REMOVE KITCHEN SINK, GARBAGE DISPOSAL, HW & CW LINES TO 3/4" LINES IN THE WALL, DRAINS (TAILPIECE, P-TRAPS)
2. REMOVE DISHWASHER AND HOSES
3. REMOVE AND SALVAGE REFRIGERATORS FOR REINSTALLATION. DEMOLISH CW SUPPLIES TO ICE MAKERS.
4. REMOVE AND SALVAGE GRILLE AND OVEN FOR REINSTALLATION. ENSURE PROPANE SUPPLIES ARE SECURED CLOSED DURING CONSTRUCTION.
5. DEMOLISH SINGLE FIRE SPRINKLER HEAD.

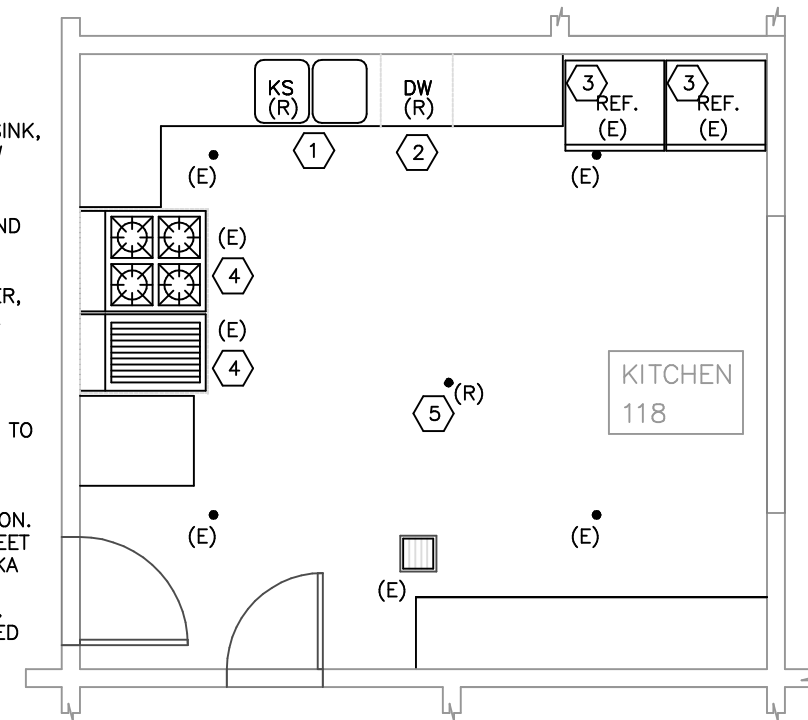


A DEMOLITION FLOOR PLAN - KITCHEN
GRAPHIC SCALE AS SHOWN

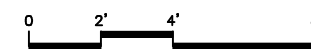


NEW WORK NOTES:

1. SUPPLY & INSTALL KITCHEN SINK, GARBAGE DISPOSAL, HW & CW LINES, DRAINS (TAILPIECE, P-TRAPS). SEE WASTE PIPING AND WATER PIPING DETAILS AND NOTES ON THIS SHEET.
2. SUPPLY & INSTALL DISHWASHER, HW & CW LINES, DRAIN HOSE.
3. INSTALL NEW CW SUPPLIES TO REFRIGERATORS' ICE MAKERS.
4. RECONNECT GRILLE AND OVEN TO PROPANE SUPPLIES.
5. RELOCATE A FIRE SPRINKLER HEAD AT NEW CEILING ELEVATION. REPLACE WITH NEW HEAD. MEET NFPA 13 AND STATE OF ALASKA REQUIREMENTS. TEST AND CERTIFY SYSTEM AS REQUIRED. WORK CONDUCTED BY CERTIFIED FIRE SPRINKLER CONTRACTOR.



B NEW FLOOR PLAN - KITCHEN
GRAPHIC SCALE AS SHOWN



CONSTRUCTION DOCUMENTS
GLACIER FIRE STATION KITCHEN &
CLASSROOM RENOVATION

1700 Crest Avenue
Juneau, Alaska 99801

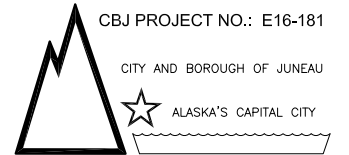
Number	Date	By	Description of Revisions

Sheet Title
**PLUMBING PLANS:
DEMOLITION &
NEW WORK; DETAILS**

Scale AS SHOWN
Designed CC Drawn CC
Date APRIL 1, 2016 Checked CC
Approved By CC Job Number

Sheet Number

M2 OF 2



CBJ Bldg. Permit No. _____

CONSTRUCTION DOCUMENTS
GLACIER FIRE STATION KITCHEN & CLASSROOM RENOVATION
 1700 Crest Avenue
 Juneau, Alaska 99801

LEGEND & ABBREVIATIONS

- CONDUIT w/12 AWG CONDUCTORS, UON. SLASHES DENOTE QUANTITY OF CONDUCTORS IF NOT TWO. SHARED NEUTRALS SHALL BE #10 AWG.
- DUPLEX RECEPTACLE: 18" AFF, UON
- RAISED HEIGHT RECEPTACLE: 48" AFF, UON
- DOUBLE DUPLEX RECEPTACLE: 18" AFF, UON
- SINGLE POLE SWITCH: 48" AFF, UON
- 600 WATT DIMMER SWITCH: 48" AFF, UON
- 2' x 4' LED TROFFER
- LED UNDERCABINET/SURFACE WRAP
- WALL MOUNT EXIT SIGN/LIGHT
- JUNCTION BOX
- PANELBOARD
- THERMOSTAT
- MANUAL PULL STATION
- SYSTEM HEAT DETECTOR
- ALARM BELL
- TELEPHONE/DATA RECEPTACLE: 18" AFF, UON
- AFF ABOVE FINISHED FLOOR
- DW DISHWASHER
- (E) EXISTING, TO REMAIN
- GD GARBAGE DISPOSAL
- GFCI GROUND FAULT CIRCUIT INTERRUPTER
- GND GROUND
- LTG LIGHTING
- (N) NEW EQUIPMENT OR DEVICE
- (R) REMOVE AND/OR RELOCATE
- REC RECEPTACLE
- REF REFRIGERATOR
- UON UNLESS OTHERWISE NOTED
- (X) EXISTING, TO BE REMOVED

NOTES and SPECIFICATIONS

1. Provide all work as shown on the drawings and described in the specifications and notes for a complete and functional installation. Unless otherwise noted, all material shall be of new manufacture and of the manufacturer's standard construction. All material shall be approved by Underwriters Laboratories (UL) and so noted.
2. All work shall comply with the latest approved editions of:
 - The National Electrical Code (NEC)
 - The National Fire Protection Association Codes (NFPA)
 - The International Building Code (IBC)
 - The Uniform Federal Accessibility Standards (UFAS)
 - All applicable Federal, State and Local regulations
3. Provide two sets of as-built drawings at project completion. Minimize and seal any penetrations of the vapor barrier caused by the electrical installation. Label all revised panelboards, circuit breakers, junction boxes, controls, etc. Provide a new accurate, typed circuit directory for each revised panelboard.
4. Raceway systems shall be EMT for feeder, telephone and data circuits. All conductors shall be copper. Conductors in raceways shall have type THHN/THWN insulation for inside work and type XHHW-2 for exterior work. Type MC cable is acceptable for interior work where approved by the local authority, the Owner and the NEC.
5. Boxes shall be steel, air-tight type on all exterior walls, with appropriate plaster rings. All wiring devices shall be specification grade, screw connected, with matching nylon plates. Provide a manual starter/disconnect for motor loads.
6. Provide new devices as shown for connection to the existing fire alarm system including heat detectors and horn/strobe notification appliances.
7. For each new telephone, data and cable television receptacle provide a deep 4" square box, single gang plaster ring, and appropriate cabling to the appropriate termination board or head-end equipment.
8. Total Additional Connected Load for the facility is 4.1 kVA (11.32 Amperes). Actual Additional Demand Load for the facility is 3.3 kVA (9.1 Amperes).

LUMINAIRE SCHEDULE

TYPE	DESCRIPTION	MANUFACTURER	LAMP(S)	REMARKS
A	2' x 4', recessed LED troffer surface volumetric with 3500°K LEDs, linear faceted refractor, light diffusing film, sloped end plates, dimming drivers	Lithonia 2VTL4 60L ADP EZ1 LP835	52W, 5351 lumens, all 3500°K	Provide luminaires with 0-10V dimming
B	2' x 2', recessed LED troffer surface volumetric with 3500°K LEDs, linear faceted refractor, light diffusing film, sloped end plates, dimming drivers	Lithonia 2VTL2 40L ADP EZ1 LP835	41W, 4179 lumens, all 3500°K	Provide luminaires with 0-10V dimming
C	1-1/4" x 1/2" low profile LED undercabinet with aluminum housing, CRI of 85	Lithonia Rayzer	3000° K LEDs	Include linking cords and splice boxes as required.
D	Ceiling mounted 3500°K LED surface mount with steel housing, linear faceted refractor with light diffusing film, die-cast end caps	Lithonia WL Series WL4 30L LP835	3500°K LED's 28.2W, 3095 lumens	

Panel C (Existing)		SIZE	VOLTS/PHASE	MAIN	MOUNT / LOCATION	SHORT CKT		
CKT #	WIRE Qty/Size	BRKR Amp/Size	K V A			BRKR Amp/Size	WIRE Qty/Size	
			CKT	A	B	C	CKT	
1	Extg LTG (Existing)	20/1		0.0			20/1 LTG (Existing)	Extg 2
3	Extg LTG (Existing)	20/1			-0.8		-0.8 20/1 LTG 119 (Existing), New LED	Extg 4
5	Extg LTG (Existing)	20/1				-0.8	-0.8 20/1 LTG 109 (Existing), New LED	Extg 6
7	Demo LTG 118 Incan. (demo, retain breake	20/1	-1.0	-1.0			20/1 LTG (Existing)	Extg 8
9	Extg LTG 118 UC, 125 (Existing), New LED	20/1	-0.5		-0.5		20/1 REC (Existing)	Extg 10
11	Extg LTG 118 Fluor. (Existing), New LED	20/1	0.1			0.1	20/1 REC (Existing)	Extg 12
13	Extg REC (Existing)	20/1*		0.0			20/1 REC (Existing)	Extg 14
15	Extg REC (Existing)	20/1*			0.0		20/1 REC (Existing)	Extg 16
17	Demo Dishwasher (demo, retain breaker)	20/1	-1.2			-1.2	20/1 REC (Existing)	Extg 18
19	Extg Disposal (Existing)	20/1		0.0			20/1 REC (Existing)	Extg 20
21	Extg REC (Existing)	20/1*			0.0		20/1 REC (Existing)	Extg 22
23	Extg REC (Existing)	20/1*				0.0	20/1 REC - Refrigerator (Existing)	Extg 24
25	Extg REC (Existing)	20/1*		0.0			20/1 REC - Refrigerator (Existing)	Extg 26
27	Extg REC (Existing)	20/1*			0.0		20/1 REC (Existing)	Extg 28
29	Extg REC (Existing)	20/1*				0.0	20/1 REC - UPS (Existing)	Extg 30
31	2/#12 REC - Countertop	20/1*	1.5	1.5			20/1 Spare	32
33	3/#6 Dishwasher (demo extg 20/1 spares,	50/2	3.4		3.4		15/1 Shunt Trip	Extg 34
35	-- provide new 50/2 for dishwasher)	--	3.4			3.4	20/1 Kitchen Gas Solenoid (thru FA)	Extg 36
37	Extg Range - Existing	20/2		0.0			20/2 Range - Existing	Extg 38
39	--	--			0.0		--	40
41	Space					0.0	Space	42
ADDITIONAL CONNECTED LOAD (kVA):		4.1	0.5	2.1	1.5		ADDITIONAL DEMAND LOAD (kVA): 3.3	

Number	Date	By	Description of Revisions

Sheet Title
LEGEND, NOTES, LUMINAIRE AND PANEL SCHEDULES

Scale AS SHOWN (HALF SCALE AT 11X17)
 Designed PG Drawn AER/PG
 Date APRIL 1, 2016 Checked PG
 Approved By PG Job Number 1308

DEMOLITION NOTES

Provide electrical demolition for the spaces as shown. Remove all power, distribution, lighting, controls, communications and associated equipment, devices, raceways and conductors throughout the spaces as shown to prepare for the new work.

Coordinate the removal and reconnection of all electrical equipment with the other trades.

Remove all raceways and conductors back to the originating panelboard or control panel. Existing raceways may be reused for new equipment where practical.

With Alternate #2 provide electrical demolition for the Day Room 119 and Classroom 109.

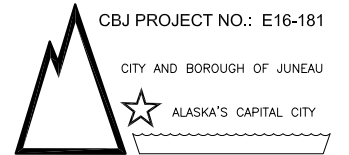
GORMAN ENGINEERS

10761 HORIZON DRIVE
JUNEAU, ALASKA 99801-1626
PHONE: 463-6721 CELL: 723-8884
e-mail: pgorman@gci.net

A.E. Rogers

ARCHITECTS, LLC

P.O. Box 34401 • Juneau, Alaska 99803
Tele 907.789.7589 • www.aerogers.com



CBJ PROJECT NO.: E16-181

CITY AND BOROUGH OF JUNEAU

ALASKA'S CAPITAL CITY



April 1, 2016

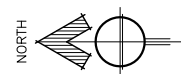
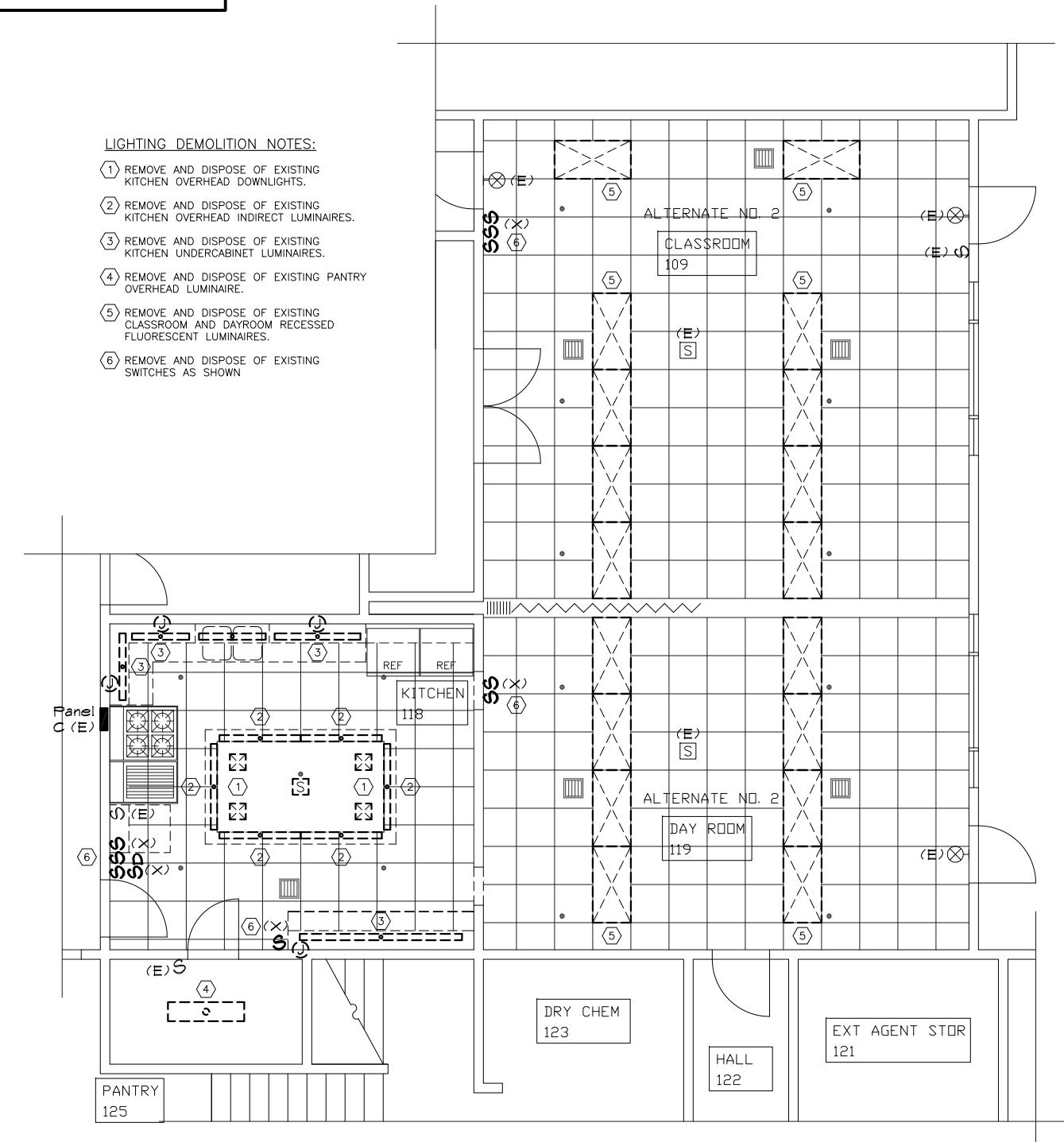
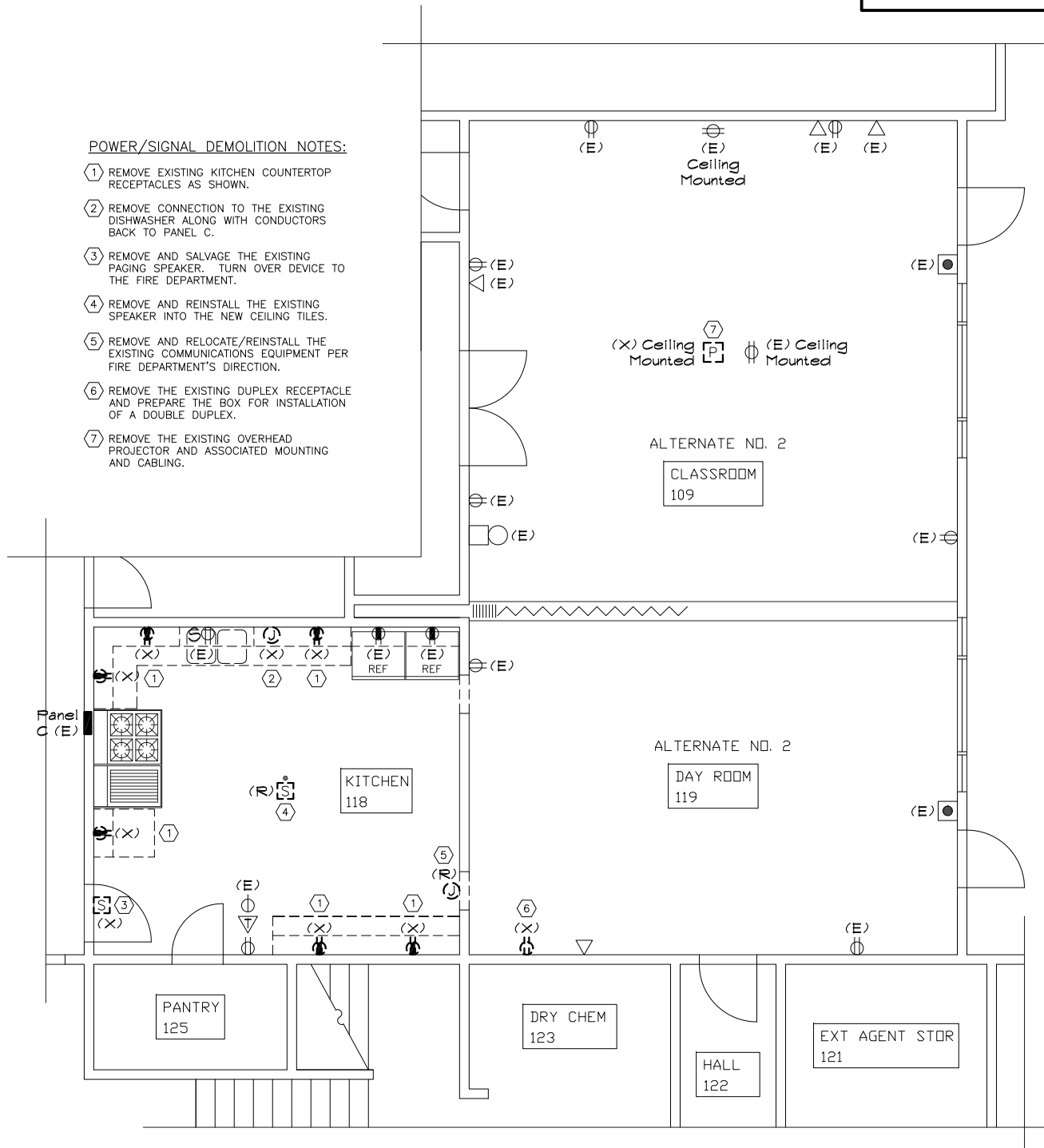
CBJ Bldg. Permit No. _____

POWER/SIGNAL DEMOLITION NOTES:

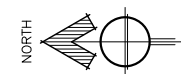
- 1 REMOVE EXISTING KITCHEN COUNTERTOP RECEPTACLES AS SHOWN.
- 2 REMOVE CONNECTION TO THE EXISTING DISHWASHER ALONG WITH CONDUCTORS BACK TO PANEL C.
- 3 REMOVE AND SALVAGE THE EXISTING PAGING SPEAKER. TURN OVER DEVICE TO THE FIRE DEPARTMENT.
- 4 REMOVE AND REINSTALL THE EXISTING SPEAKER INTO THE NEW CEILING TILES.
- 5 REMOVE AND RELOCATE/REINSTALL THE EXISTING COMMUNICATIONS EQUIPMENT PER FIRE DEPARTMENT'S DIRECTION.
- 6 REMOVE THE EXISTING DUPLEX RECEPTACLE AND PREPARE THE BOX FOR INSTALLATION OF A DOUBLE DUPLEX.
- 7 REMOVE THE EXISTING OVERHEAD PROJECTOR AND ASSOCIATED MOUNTING AND CABLING.

LIGHTING DEMOLITION NOTES:

- 1 REMOVE AND DISPOSE OF EXISTING KITCHEN OVERHEAD DOWNLIGHTS.
- 2 REMOVE AND DISPOSE OF EXISTING KITCHEN OVERHEAD INDIRECT LUMINAIRES.
- 3 REMOVE AND DISPOSE OF EXISTING KITCHEN UNDERCABINET LUMINAIRES.
- 4 REMOVE AND DISPOSE OF EXISTING PANTRY OVERHEAD LUMINAIRE.
- 5 REMOVE AND DISPOSE OF EXISTING CLASSROOM AND DAYROOM RECESSED FLUORESCENT LUMINAIRES.
- 6 REMOVE AND DISPOSE OF EXISTING SWITCHES AS SHOWN



A POWER/SIGNAL DEMOLITION
SCALE: 1/4" = 1'-0"



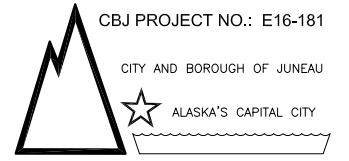
B LIGHTING DEMOLITION
SCALE: 1/4" = 1'-0"

CONSTRUCTION DOCUMENTS
GLACIER FIRE STATION KITCHEN & CLASSROOM RENOVATION
 1700 Crest Avenue
 Juneau, Alaska 99801

Number	Date	By	Description of Revisions

Sheet Title
POWER/SIGNAL AND LIGHTING DEMOLITION PLANS & NOTES

Scale AS SHOWN (HALF SCALE AT 11X17)
 Designed PG Drawn AER/PG
 Date APRIL 1, 2016 Checked PG
 Approved By PG Job Number 1308



CBJ Bldg. Permit No. _____

CONSTRUCTION DOCUMENTS

GLACIER FIRE STATION KITCHEN & CLASSROOM RENOVATION

1700 Crest Avenue
Juneau, Alaska 99801

Number	Date	By	Description of Revisions

Sheet Title
**POWER/SIGNAL NEW WORK
 AND LIGHTING NEW WORK
 PLANS & NOTES**

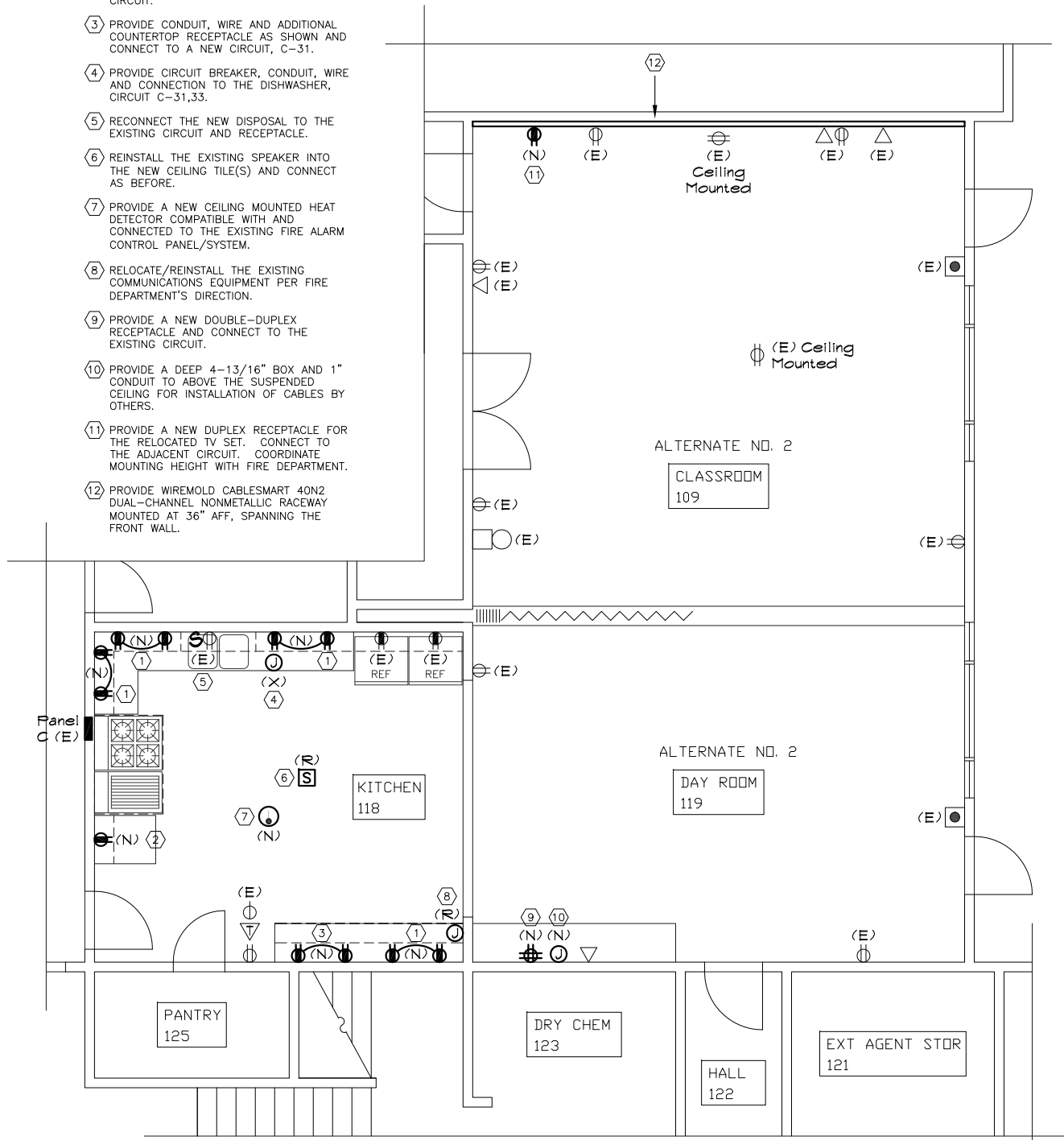
Scale AS SHOWN (HALF SCALE AT 11X17)
 Designed PG Drawn AER/PG
 Date APRIL 1, 2016 Checked PG
 Approved By PG Job Number 1308

POWER/SIGNAL NEW WORK NOTES:

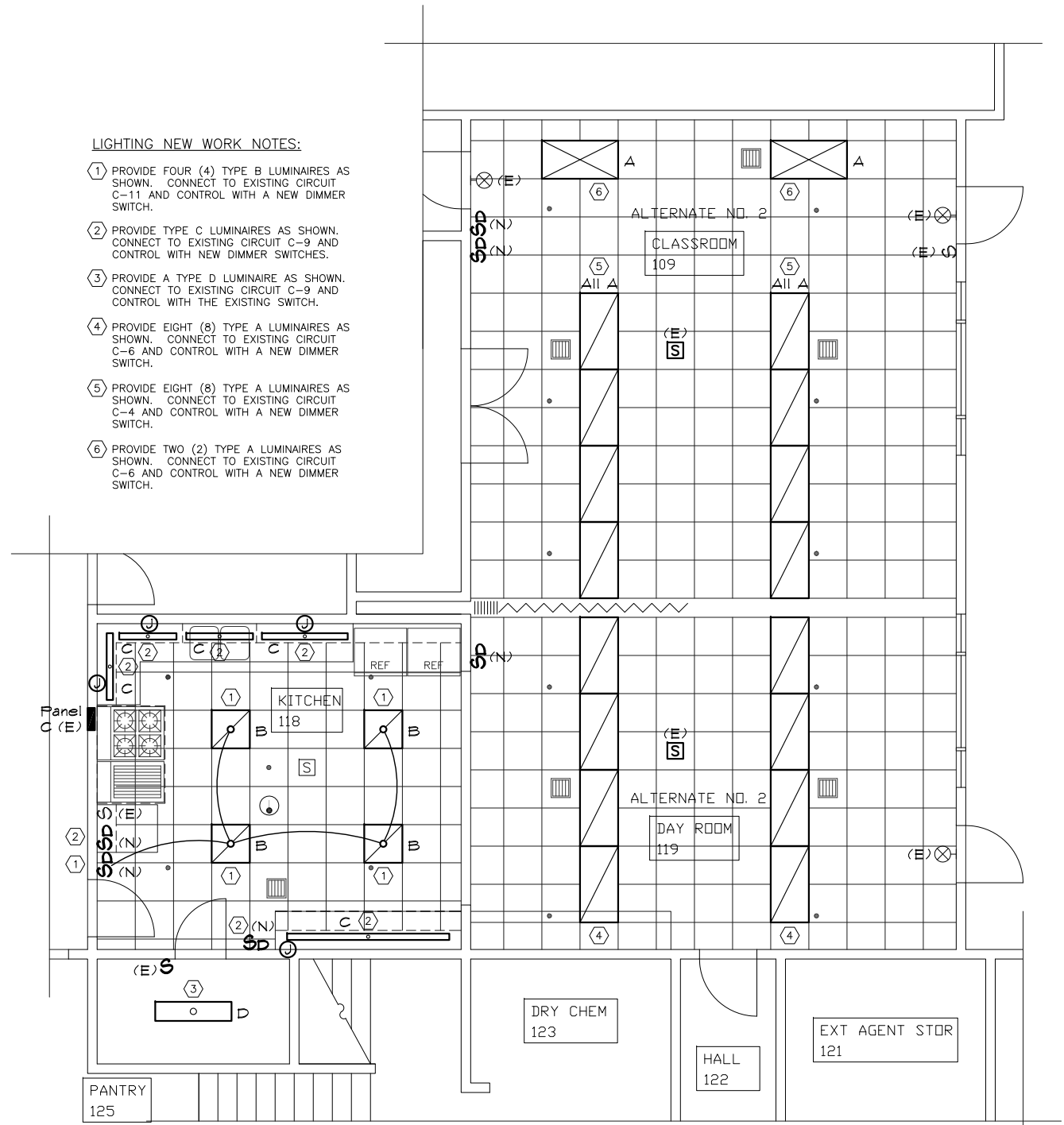
- 1 PROVIDE AN ADDITIONAL COUNTERTOP RECEPTACLE AS SHOWN AND CONNECT TO THE EXISTING CIRCUIT.
- 2 PROVIDE A NEW COUNTERTOP RECEPTACLE AS SHOWN AND CONNECT TO THE EXISTING CIRCUIT.
- 3 PROVIDE CONDUIT, WIRE AND ADDITIONAL COUNTERTOP RECEPTACLE AS SHOWN AND CONNECT TO A NEW CIRCUIT, C-31.
- 4 PROVIDE CIRCUIT BREAKER, CONDUIT, WIRE AND CONNECTION TO THE DISHWASHER, CIRCUIT C-31,33.
- 5 RECONNECT THE NEW DISPOSAL TO THE EXISTING CIRCUIT AND RECEPTACLE.
- 6 REINSTALL THE EXISTING SPEAKER INTO THE NEW CEILING TILE(S) AND CONNECT AS BEFORE.
- 7 PROVIDE A NEW CEILING MOUNTED HEAT DETECTOR COMPATIBLE WITH AND CONNECTED TO THE EXISTING FIRE ALARM CONTROL PANEL/SYSTEM.
- 8 RELOCATE/REINSTALL THE EXISTING COMMUNICATIONS EQUIPMENT PER FIRE DEPARTMENT'S DIRECTION.
- 9 PROVIDE A NEW DOUBLE-DUPLEX RECEPTACLE AND CONNECT TO THE EXISTING CIRCUIT.
- 10 PROVIDE A DEEP 4-13/16" BOX AND 1" CONDUIT TO ABOVE THE SUSPENDED CEILING FOR INSTALLATION OF CABLES BY OTHERS.
- 11 PROVIDE A NEW DUPLEX RECEPTACLE FOR THE RELOCATED TV SET. CONNECT TO THE ADJACENT CIRCUIT. COORDINATE MOUNTING HEIGHT WITH FIRE DEPARTMENT.
- 12 PROVIDE WIREMOLD CABLESMART 40N2 DUAL-CHANNEL NONMETALLIC RACEWAY MOUNTED AT 36" AFF, SPANNING THE FRONT WALL.

LIGHTING NEW WORK NOTES:

- 1 PROVIDE FOUR (4) TYPE B LUMINAIRES AS SHOWN. CONNECT TO EXISTING CIRCUIT C-11 AND CONTROL WITH A NEW DIMMER SWITCH.
- 2 PROVIDE TYPE C LUMINAIRES AS SHOWN. CONNECT TO EXISTING CIRCUIT C-9 AND CONTROL WITH NEW DIMMER SWITCHES.
- 3 PROVIDE A TYPE D LUMINAIRE AS SHOWN. CONNECT TO EXISTING CIRCUIT C-9 AND CONTROL WITH THE EXISTING SWITCH.
- 4 PROVIDE EIGHT (8) TYPE A LUMINAIRES AS SHOWN. CONNECT TO EXISTING CIRCUIT C-6 AND CONTROL WITH A NEW DIMMER SWITCH.
- 5 PROVIDE EIGHT (8) TYPE A LUMINAIRES AS SHOWN. CONNECT TO EXISTING CIRCUIT C-4 AND CONTROL WITH A NEW DIMMER SWITCH.
- 6 PROVIDE TWO (2) TYPE A LUMINAIRES AS SHOWN. CONNECT TO EXISTING CIRCUIT C-6 AND CONTROL WITH A NEW DIMMER SWITCH.



A POWER/SIGNAL NEW WORK
 SCALE: 1/4" = 1'-0"



B LIGHTING NEW WORK
 SCALE: 1/4" = 1'-0"

