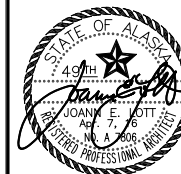


**Jensen
Yorba
Lott
Inc.**

522 West 10th Street
Juneau, Alaska 99801
phone 907-586-1070
fax 907-586-3959
jensenyorbaltott.com



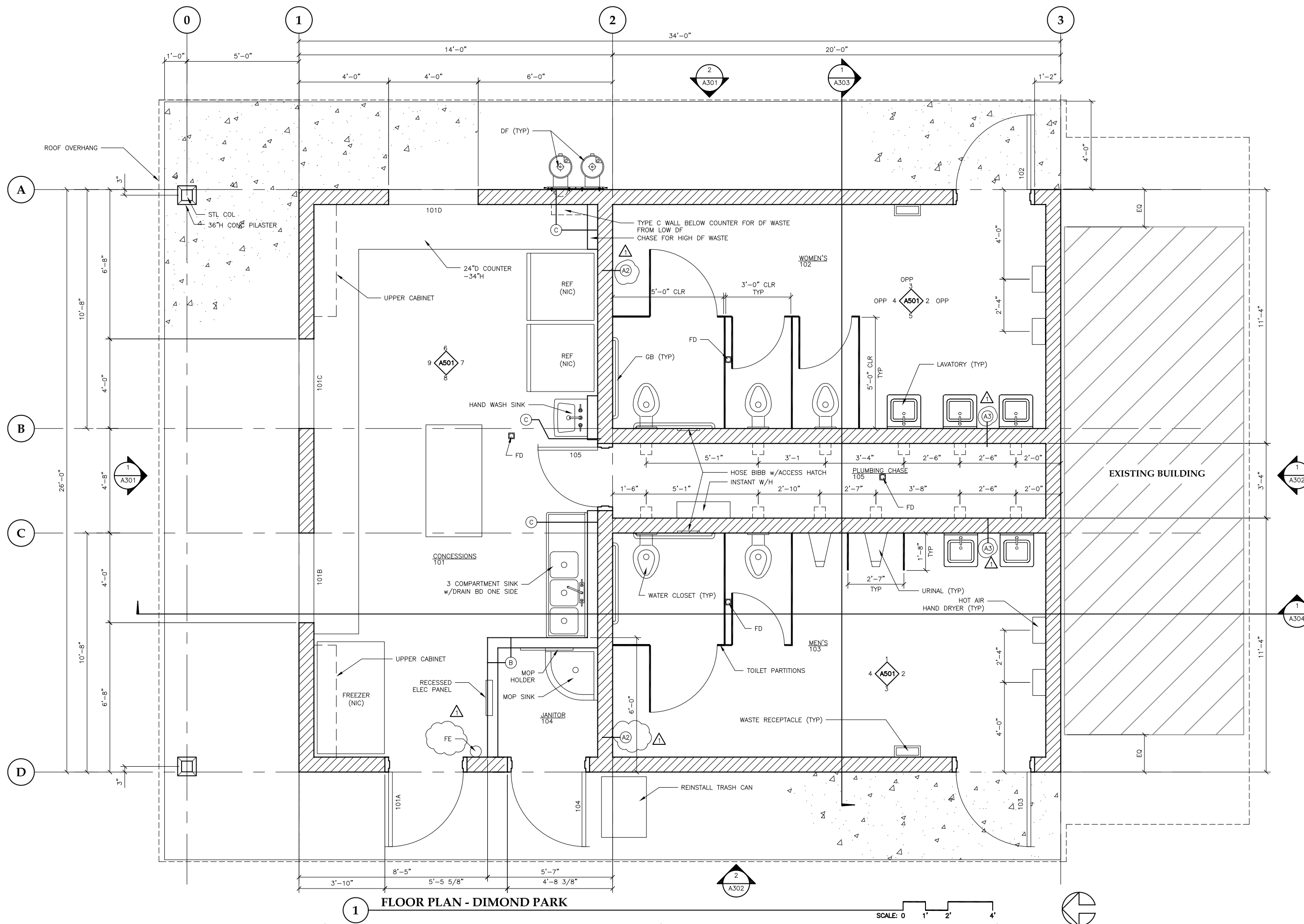
City & Borough of Juneau
**CBJ PARKS RESTROOM AND
CONCESSIONS IMPROVEMENTS**
Juneau, Alaska
CBJ Project NO. E16-165

REVISIONS	
△	Addendum 1 4-8-16
△	
△	

SHEET TITLE
**FLOOR PLAN -
DIMOND PARK**

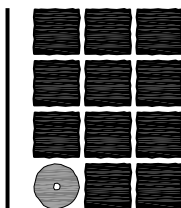
DATE: March 16, 2016
FILE: 15023

A201



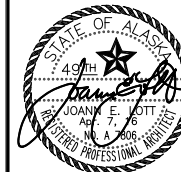
1 FLOOR PLAN - DIMOND PARK

SCALE: 0 1' 2' 4'



**Jensen
Yorba
Lott
Inc.**

522 West 10th Street
Juneau, Alaska 99801
phone 907-586-1070
fax 907-586-3959
jensenyorbalott.com



City & Borough of Juneau
**CBJ PARKS RESTROOM AND
CONCESSIONS IMPROVEMENTS**
Juneau, Alaska
CBJ Project NO. E16-165

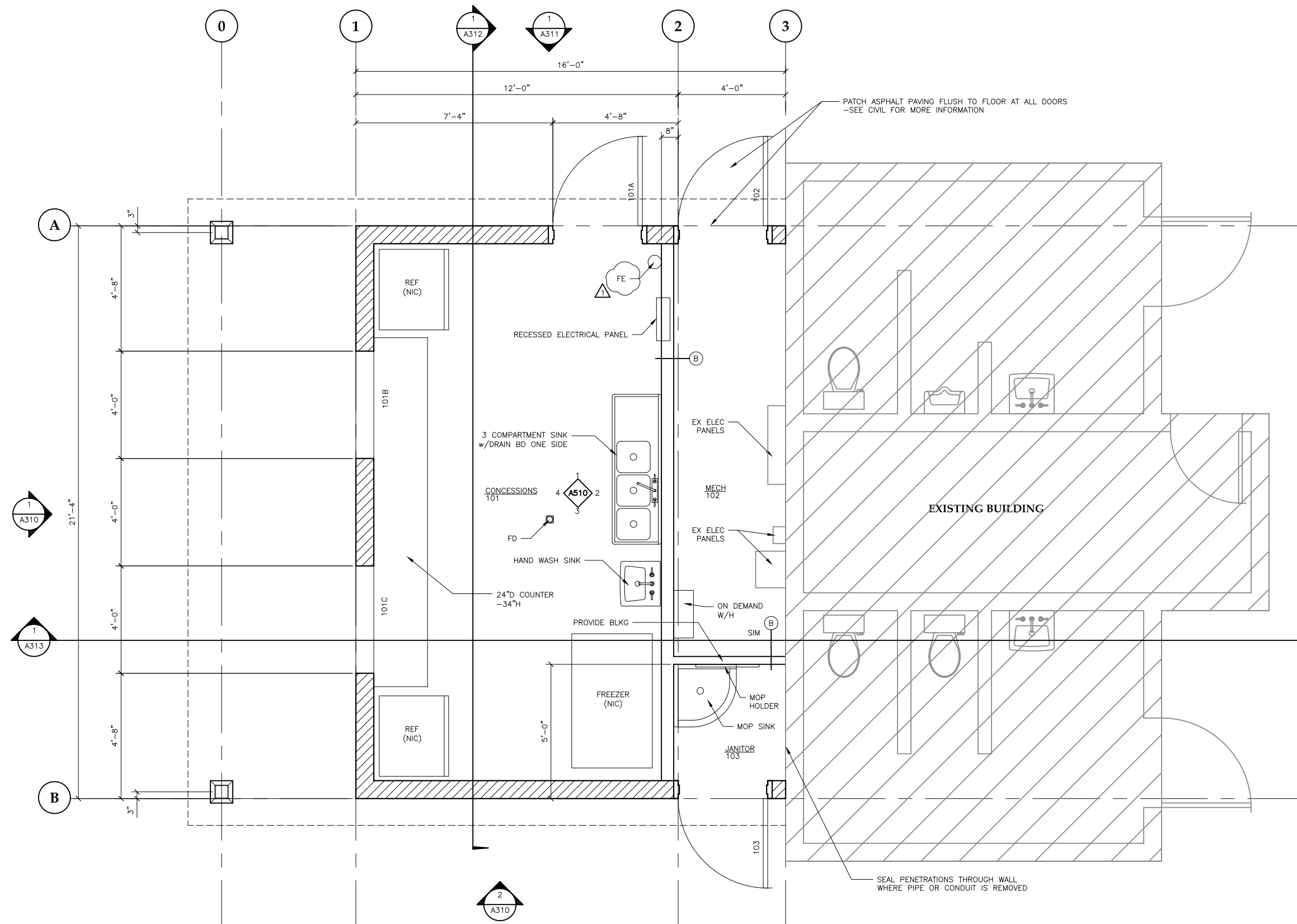
REVISIONS

△	Addendum 1 4-8-16
△	
△	

SHEET TITLE
**FLOOR PLAN -
MELVIN PARK**

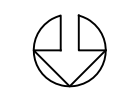
DATE: March 16, 2016
FILE: 15023

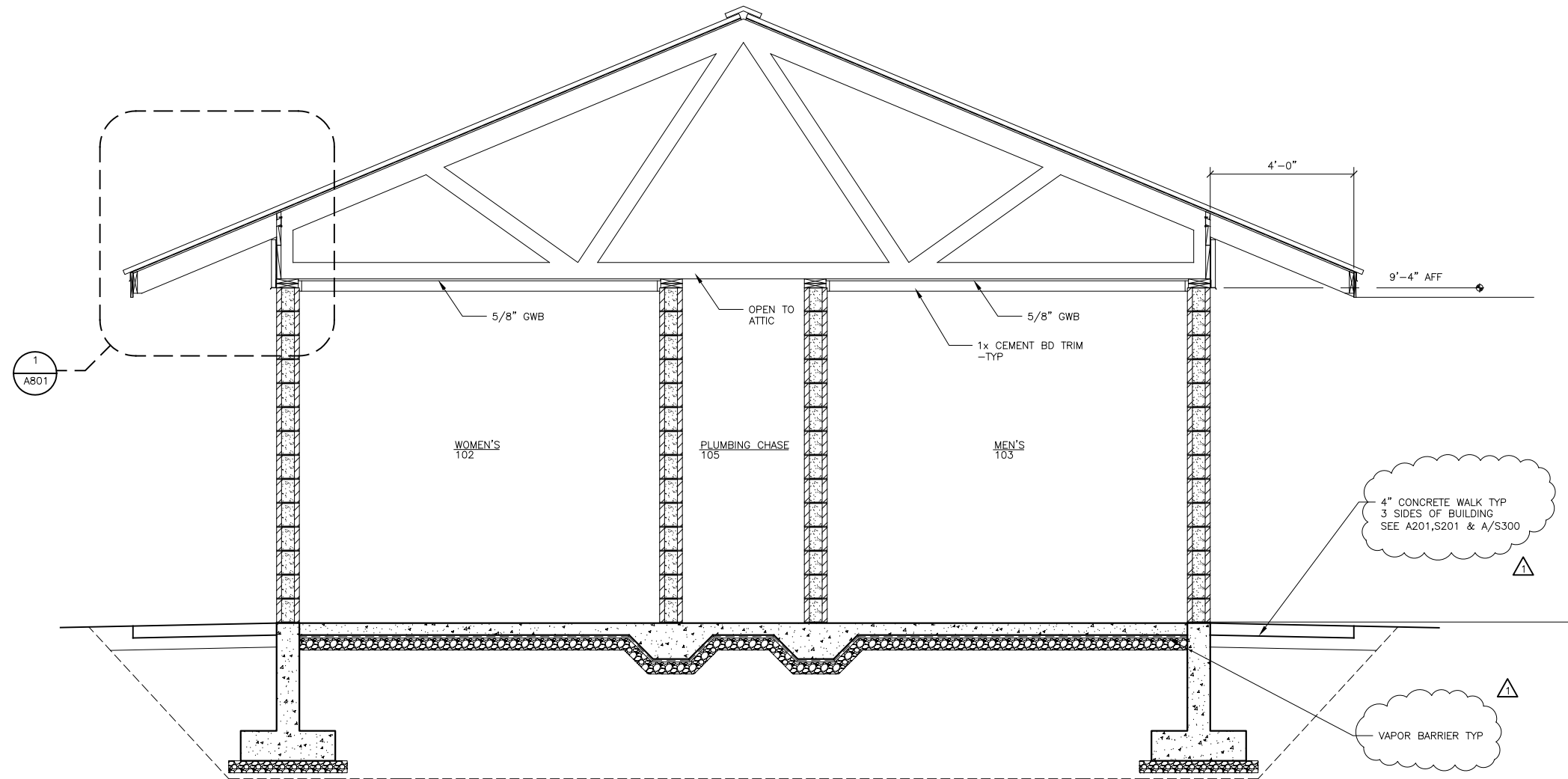
A210



1 FLOOR PLAN - MELVIN PARK

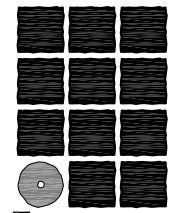
SCALE: 0 1' 2' 4'





1 BUILDING SECTION - DIMOND PARK

SCALE: 0 1' 2' 4'



**Jensen
Yorba
Lott
Inc.**

522 West 10th Street
Juneau, Alaska 99801
phone 907-586-1070
fax 907-586-3959
jensenyorbaltott.com



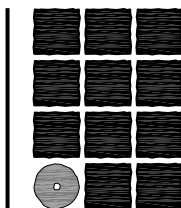
City & Borough of Juneau
**CBJ PARKS RESTROOM AND
CONCESSIONS IMPROVEMENTS**
Juneau, Alaska
CBJ Project NO. E16-165

REVISIONS	
△	Addendum 1 4-8-16
△	.
△	.

SHEET TITLE
**BUILDING
SECTION -
DIMOND PARK**

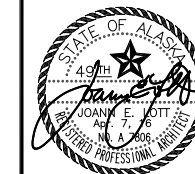
DATE: March 16, 2016
FILE: 15023

A303



**Jensen
Yorba
Lott
Inc.**

522 West 10th Street
Juneau, Alaska 99801
phone 907-586-1070
fax 907-586-3959
jensenyorbalott.com



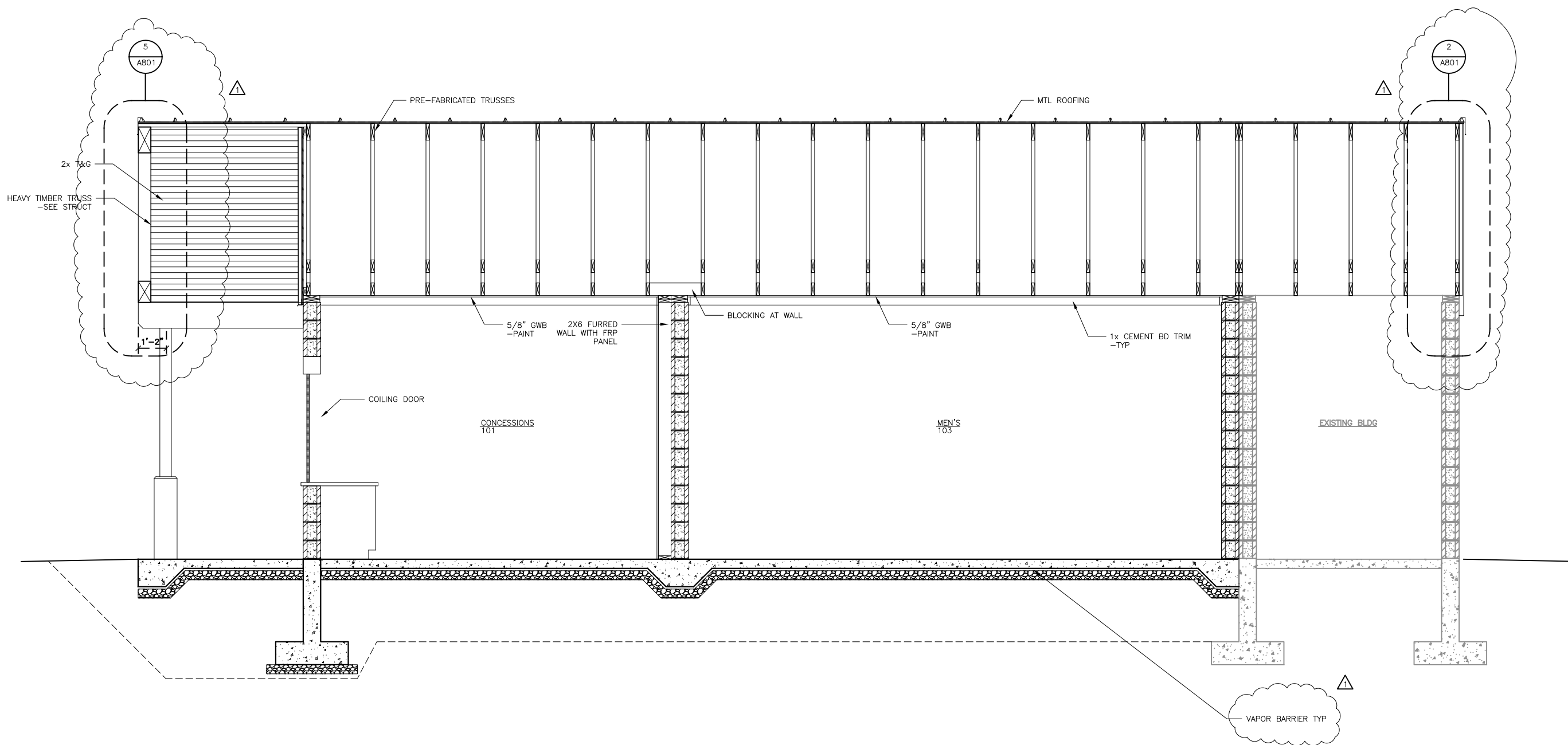
City & Borough of Juneau
**CBJ PARKS RESTROOM AND
CONCESSIONS IMPROVEMENTS**
Juneau, Alaska
CBJ Project NO. E16-165

REVISIONS	
△	Addendum 1 4-8-16
△	.
△	.

SHEET TITLE
**BUILDING
SECTION -
DIMOND PARK**

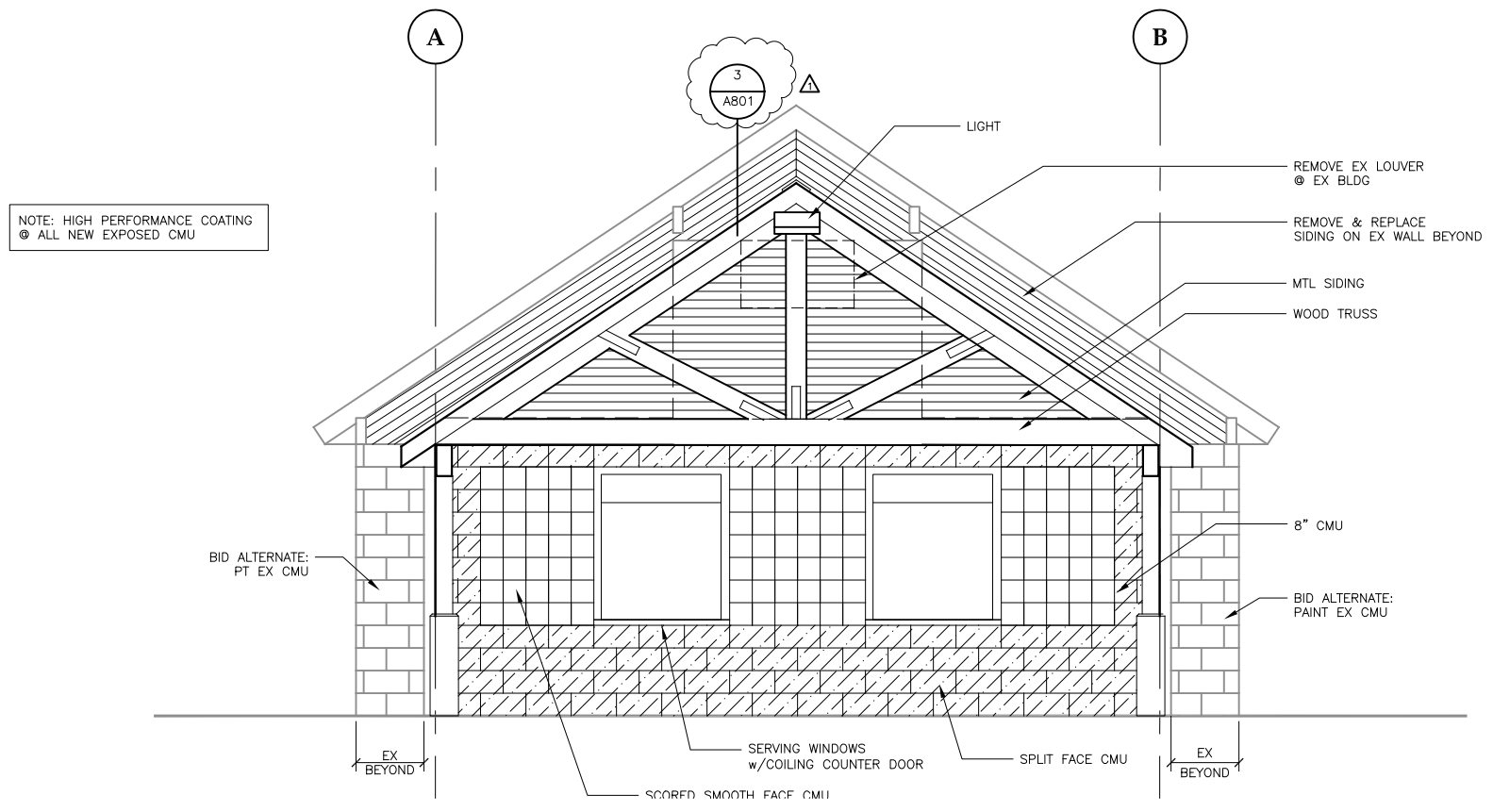
DATE: March 16, 2016
FILE: 15023

A304



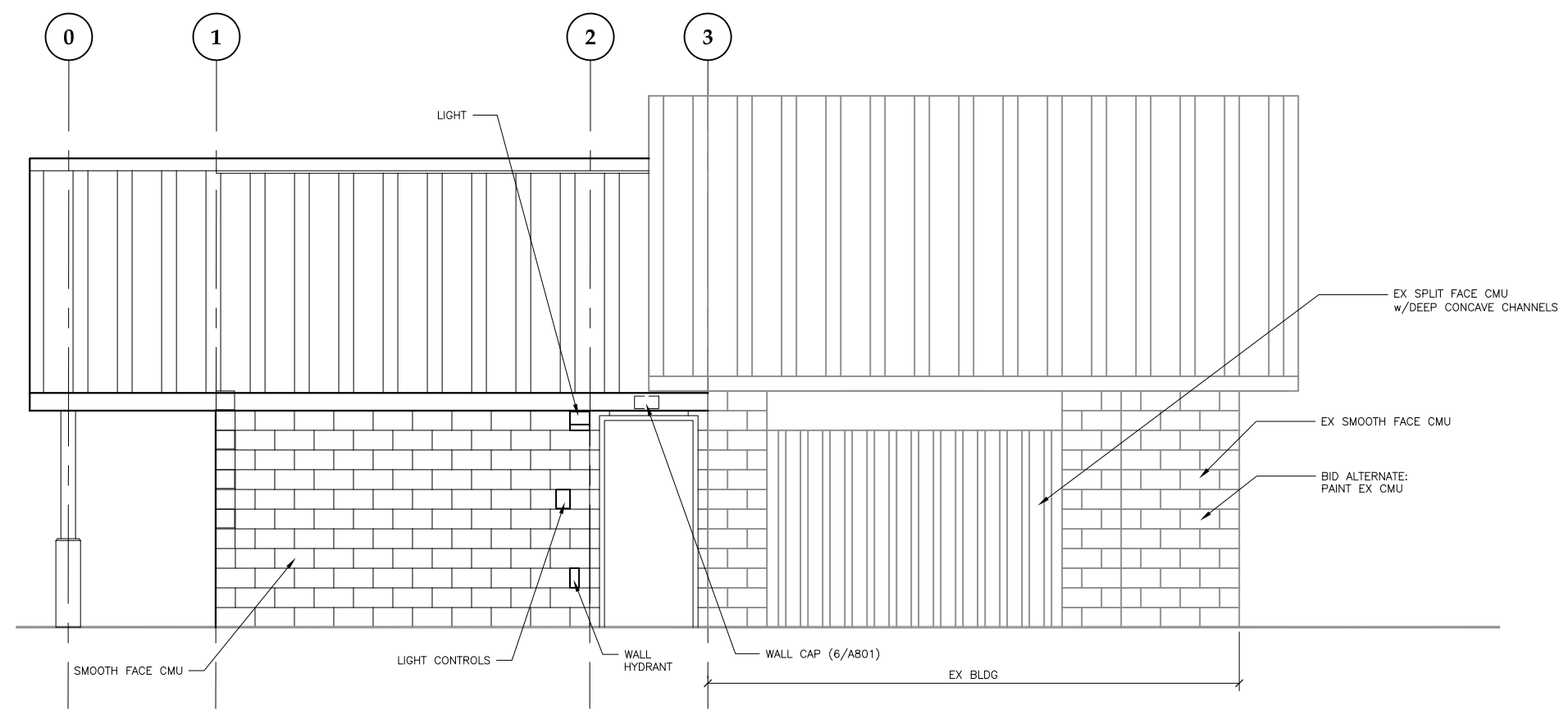
1 BUILDING SECTION - DIMOND PARK

SCALE: 0 1' 2' 4'



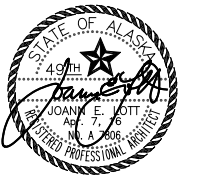
NOTE: HIGH PERFORMANCE COATING
 Ⓞ ALL NEW EXPOSED CMU

1 EXTERIOR ELEVATION - MELVIN PARK
 SCALE: 0 2' 4' 8'



2 EXTERIOR ELEVATION - MELVIN PARK
 SCALE: 0 2' 4' 8'

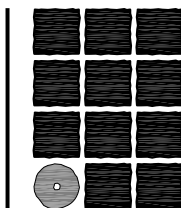
Jensen Yorba Lott Inc.
 522 West 10th Street
 Juneau, Alaska 99801
 phone 907-586-1070
 fax 907-586-3959
 jensenyorbalott.com



City & Borough of Juneau
CBJ PARKS RESTROOM AND CONCESSIONS IMPROVEMENTS
 Juneau, Alaska
 CBJ Project NO. E16-165

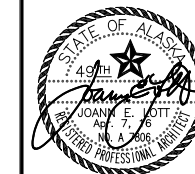
REVISIONS
 ▲ Addendum 1 4-8-16
 ▲
 ▲
 SHEET TITLE
EXTERIOR ELEVATIONS - MELVIN PARK
 DATE: March 16, 2016
 FILE: 15023

A310



**Jensen
Yorba
Lott
Inc.**

522 West 10th Street
Juneau, Alaska 99801
phone 907-586-1070
fax 907-586-3959
jensenyorbalott.com



City & Borough of Juneau
**CBJ PARKS RESTROOM AND
CONCESSIONS IMPROVEMENTS**
Juneau, Alaska
CBJ Project NO. E16-165

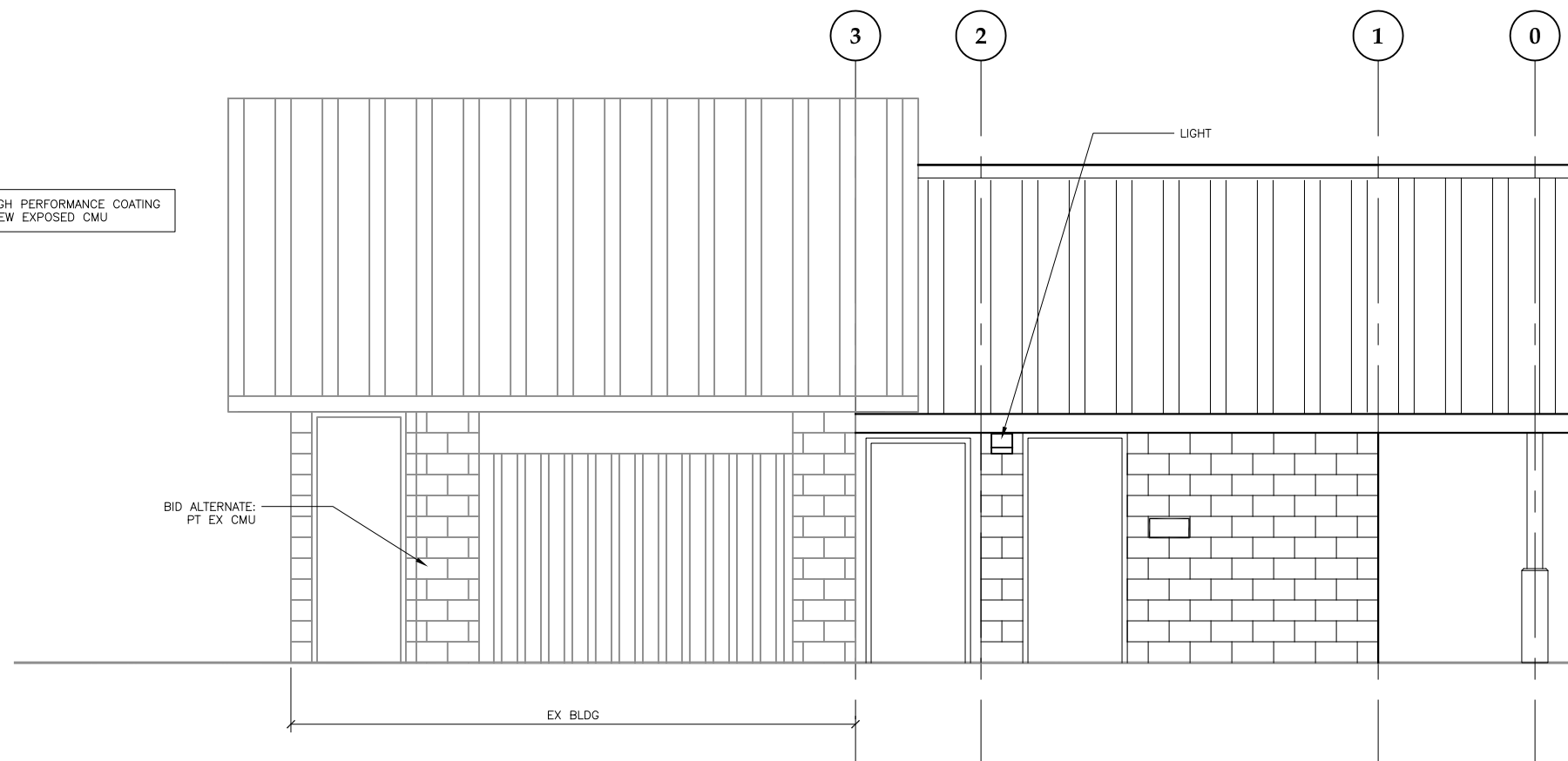
REVISIONS	
△	Addendum 1 4-8-16
△	
△	

SHEET TITLE
**EXTERIOR
ELEVATION -
MELVIN PARK**

DATE: March 16, 2016
FILE: 15023

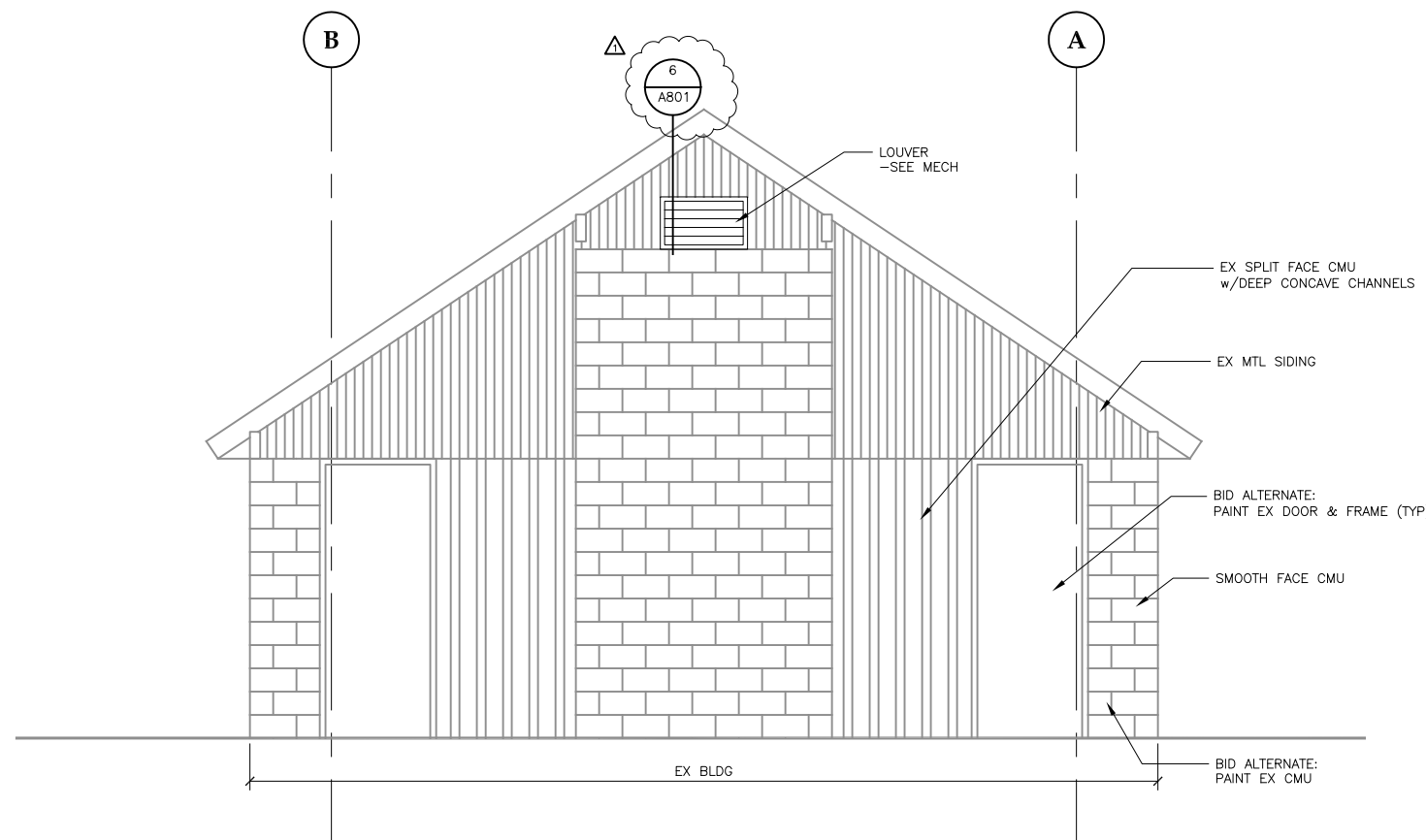
A311

NOTE: HIGH PERFORMANCE COATING
⊙ ALL NEW EXPOSED CMU



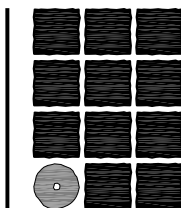
1 EXTERIOR ELEVATION - MELVIN PARK

SCALE: 0 2' 4' 8'



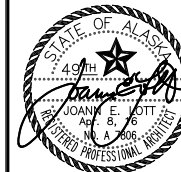
2 EXTERIOR ELEVATION - MELVIN PARK

SCALE: 0 2' 4' 8'

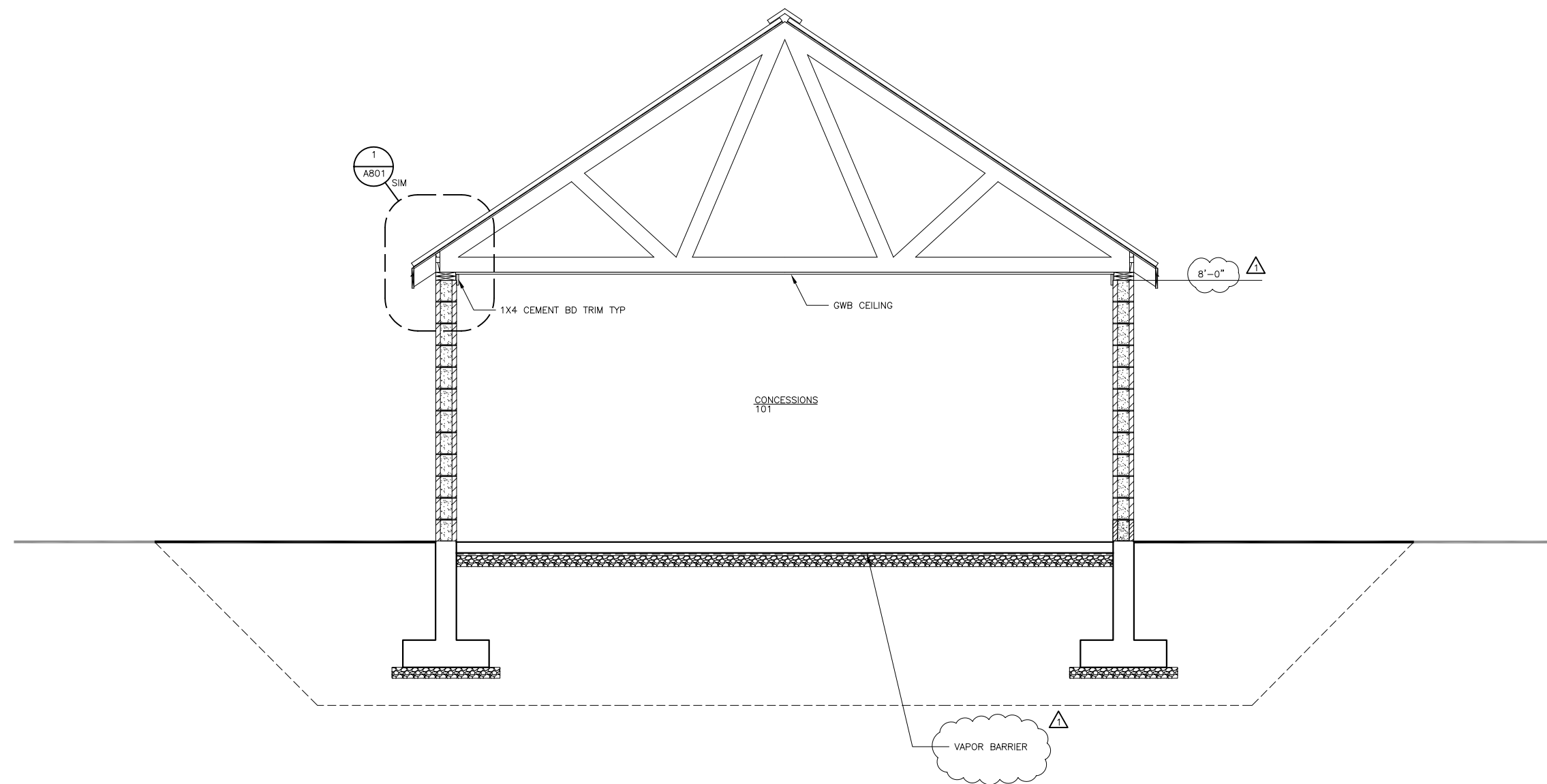


**Jensen
Yorba
Lott**
Inc.

522 West 10th Street
Juneau, Alaska 99801
phone 907-586-1070
fax 907-586-3959
jensenyorbalott.com



City & Borough of Juneau
**CBJ PARKS RESTROOM AND
CONCESSIONS IMPROVEMENTS**
Juneau, Alaska
CBJ Project NO. E16-165



1 BUILDING SECTION - MELVIN PARK

SCALE: 0 1' 2' 4'

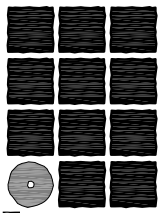
REVISIONS

△	Addednum1 4-8-16
△	.
△	.

SHEET TITLE
**BUILDING
SECTION -
MELVIN PARK**

DATE: March 16, 2016
FILE: 15023

A312



**Jensen
Yorba
Lott
Inc.**

522 West 10th Street
Juneau, Alaska 99801
phone 907-586-1070
fax 907-586-3959
jensenyorbalott.com



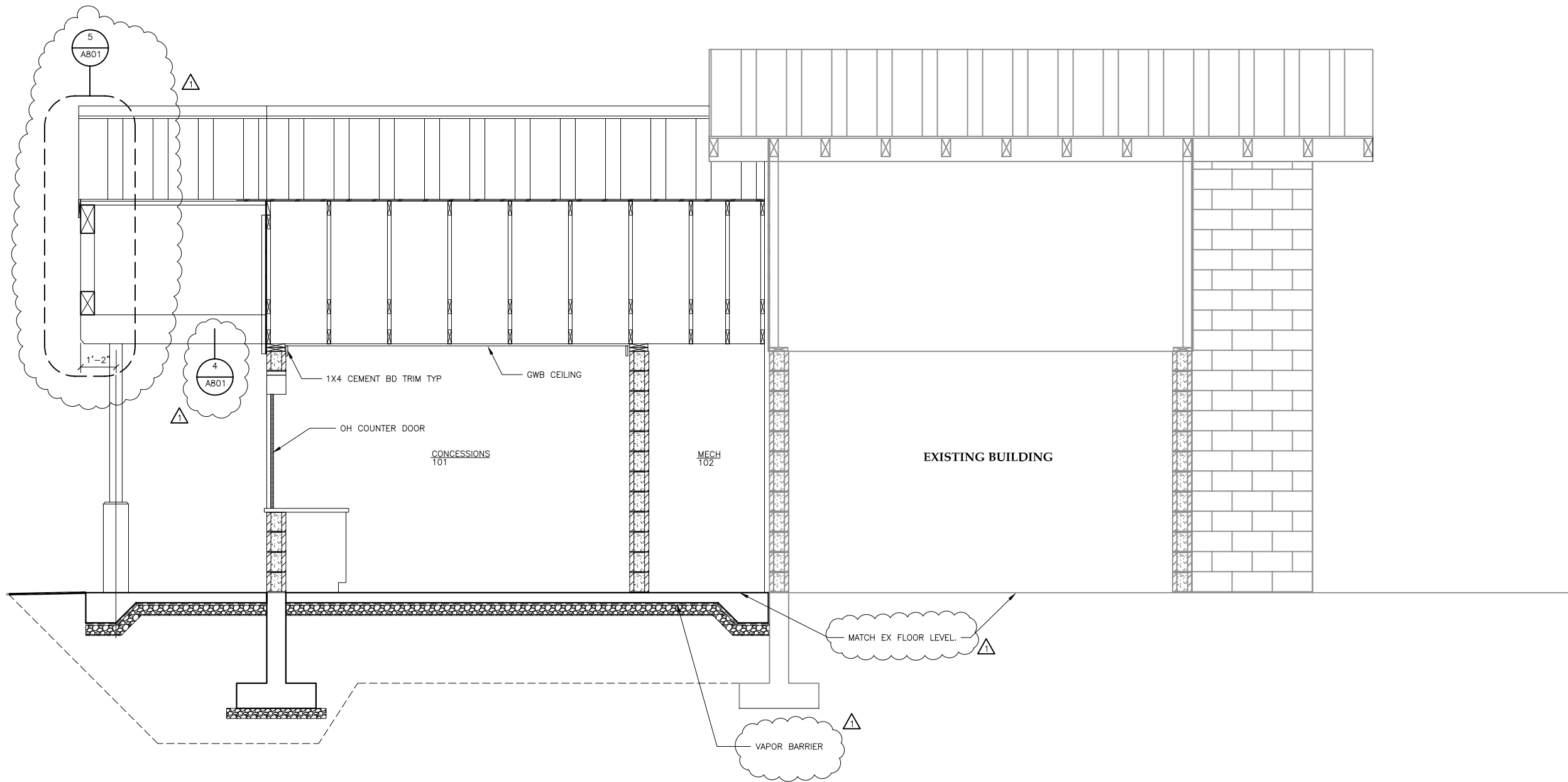
City & Borough of Juneau
**CBJ PARKS RESTROOM AND
CONCESSIONS IMPROVEMENTS**
Juneau, Alaska
CBJ Project NO. E16-165

REVISIONS	
△	Addendum 1 4-8-16
△	.
△	.

SHEET TITLE
**BUILDING
SECTION -
MELVIN PARK**

DATE: March 16, 2016
FILE: 15023

A313



1 BUILDING SECTION - MELVIN PARK

SCALE: 0 1' 2' 4'

SYMBOLS

	CW COLD WATER		THERMOMETER		AFF ABOVE FINISHED FLOOR
	HW HOT WATER		T&P TEMPERATURE AND PRESSURE RELIEF VALVE		BDD BACK DRAFT DAMPER
	V VENT		WHA WATER HAMMER ARRESTOR		CO CLEANOUT
	W WASTE		ET-1 COMPRESSION TANK		CU COPPER
	CAPPED		ACCESS DOOR		DF DRINKING FOUNTAIN
	DV DRAIN VALVE		BELOW GROUND		EF EXHAUST FAN
	BALL VALVE		CONNECTION POINT		FD FLOOR DRAIN
	PITCHED DOWN				HB HOSE BIBB
	WATER METER				HWT HOT WATER TANK
	TYPICAL PIPING JOINTS				L LAVATORY
	FCD FLOOR CLEANOUT				O.C. ON CENTER

PLUMBING FIXTURE CONNECTION SCHEDULE

FIXTURE	HOT WATER	COLD WATER	WASTE	VENT
WATER CLOSET, FLUSH VALVE	-	1-1/2	3	2
URINAL	-	3/4	2	2
PRIMING LINE	-	1/2	-	-
LAVATORY	-	1/2	1-1/2	1-1/4
HOSE BIBB	-	3/4	-	-
FLOOR DRAIN	-	-	2	1-1/2
DRINKING FOUNTAIN	-	1/2	1-1/2	1-1/4
TRIPLE POT SINK	1/2 (2)	1/2 (2)	2	2
HAND WASH SINK	1/2	1/2	2	1-1/2
SERVICE SINK	1/2	1/2	3	2

EQUIPMENT SCHEDULE - DIMOND

EQUIPMENT	MANUFACTURER	MODEL	CONTROLS/OPTIONS
HOT WATER TANK HWT-1	EEMAX	PA028240T2T	ON DEMAND ELECTRIC HOT WATER HEATER 27-28.5 KW INPUT, 240 VOLT, 1-PHASE. 2.5 GPM FLOW AT 45F GROUND WATER TEMPERATURE AND 70F RISE. LED TEMPERATURE CONTROL PANEL.
COMPRESSION TANK, ET-1	AMTROL	THERM-X-TROL ST-5-C	PRE-PRESSURIZED BUTYL DIAPHRAGM THERMAL EXPANSION CHAMBER, ADJUSTABLE, FACTORY CHARGED TO 40 PSI, SEALED AIR CUSHION. FDA COMPLIANT FOR DOMESTIC HOT WATER USE. ASME RATED. MINIMUM VOLUME 2.0 GALLONS.
WATER HAMMER ARRESTOR, WHA	AMTROL, ZURN	Z1700	ANSI A1126.1; STAINLESS STEEL CONSTRUCTION, BELLOWS TYPE. SIZED IN ACCORDANCE WITH PDI WH-201. WHA-1 SIMILAR TO ZURN 100 WITH 3/4-INCH THREADED CONNECTIONS; WHA-2 SIMILAR TO ZURN 200 WITH 1-INCH THREADED CONNECTIONS. A. PRE-CHARGED SUITABLE FOR OPERATION IN TEMPERATURE RANGE -100 TO 300 DEGREES F AND MAXIMUM 150 PSI WORKING PRESSURE. SIZED PER MANUFACTURER'S RECOMMENDATIONS FOR FIXTURES SERVED.
TRAP PRIMER VALVE	PPP, INC.	PR 500	ALL BRASS, 1/2-INCH IPS, SPRING-LOADED, PRESSURE DIFFERENTIAL ACTIVATED WITH VACUUM BRAKING MEANS. MULTIPLE OUTLETS AS REQUIRED AND APPROVED.

EXHAUST FAN SCHEDULE - DIMOND

EQUIPMENT	AREA SERVED	CFM	TSP, INCHES OF WATER	DESIGN MANUFACTURER AND MODEL	MINIMUM HORSEPOWER ELECTRICAL CHARACTERISTICS	FEATURES AND ACCESSORIES
EF-1	WOMENS	210	0.25	GREENHECK SP-A250	1/4 HP, 120 VOLT	CEILING MOUNTED, WALL CAP, CONTROLLED BY OCCUPANCY SENSOR WITH TIME DELAY.
EF-2	MENS	140	0.25	GREENHECK SP-A200	1/4 HP, 120 VOLT	CEILING MOUNTED, WALL CAP, CONTROLLED BY OCCUPANCY SENSOR WITH TIME DELAY.
EF-3	JANITOR	60	0.25	GREENHECK SP-A90	1/4 HP, 120 VOLT	CEILING MOUNTED, WALL CAP, CONTROLLED BY WALL SWITCH.

PLUMBING EQUIPMENT SCHEDULE - DIMOND

EQUIPMENT	MANUFACTURER	MODEL	CONTROLS/OPTIONS	ADA COMPATIBLE
LAVATORY L-1	ACORN WILLOUGHBY	1652FA-1-04-M	WALL HUNG, STAINLESS STEEL. SELF-CLOSE PUSH-BUTTON SUPPLY FITTING HOT AND COLD ACTUATION VALVE, SUPPLY FITTING CHICAGO HC 807E12-669, MOUNTED IN THE MIDDLE PUNCHING OF THE LAVATORY. ADDITIONAL PUNCHINGS PLUGGED WITH CLOSURE BUTTONS. GLOBE VALVE STOP INSTALLED IN THE PIPE SPACE. ACORN MODEL ST 70 LAV TEMPERING VALVE.	YES
URINAL U-1	ACORN WILLOUGHBY	2162-W-1-FV	WASHOUT TYPE, STAINLESS STEEL WITH BACK SPUD AND TRAP. RECESSED ELECTRONIC FLUSH VALVE ASSEMBLY FOR 8-INCH CONCRETE WALL, INCLUDING STOP, VACUUM BREAKER, OVERRIDE PUSH BUTTON, TUBE AND FITTINGS, AND TAILPIECE.	YES
WATER CLOSET WC WC-1 WC-2 (ADA HEIGHT)	ACORN WILLOUGHBY	2105-W-1-FVT	WALL HUNG, STAINLESS STEEL WITH BACK SPUD AND TRAP. SIPHON JET TYPE RECESSED ELECTRONIC FLUSH VALVE ASSEMBLY FOR 8-INCH CONCRETE WALL, INCLUDING STOP, VACUUM BREAKER, OVERRIDE PUSH BUTTON, TUBE AND FITTINGS, AND TAILPIECE.	YES
HOSE BIBB HB	ZURN	Z-1321	BRONZE OR BRASS WITH INTEGRAL MOUNTING FLANGE, REPLACEABLE HEXAGONAL DISC, HOSE THREAD SPOUT, CHROME PLATED WHERE EXPOSED WITH LOCK SHIELD AND REMOVABLE KEY, INTEGRAL VACUUM BREAKER. AUTOMATIC DRAINING. PROVIDE SPARE KEY.	NO
DRINKING FOUNTAIN DF-1 DF-2 (ADA HEIGHT)	MDF	MODEL 10485WM	WALL HUNG 16 GAGE 304 STAINLESS STEEL. PUSH BUTTON PNEUMATIC ACTUATION VALVE WITH LESS THAN 5 POUNDS PUSH TO ACTIVATE VALVE. DF SHALL BE FURNISHED WITH BUBBLER. BUBBLER SHALL HAVE A SOLID MOUTH GUARD AND A WALL MOUNT CARRIER PLATE.	YES
FLOOR DRAIN FD	ZURN	ZN-415	LACQUERED CAST-IRON TWO PIECE BODY WITH DOUBLE DRAINAGE FLANGE, WEEP HOLES, REVERSIBLE CLAMP COLLAR, 1/2-INCH TRAP PRIMER CONNECTION, AND ROUND ADJUSTABLE NICKEL-BRONZE 6-INCH DIAMETER STRAINER WITH SQUARE HOLES, WITH VANDAL PROOF SECURE TOP.	-
TRIPLE POT SINK S-2	JUST	NSFB-345-18L	INSTITUTIONAL GRADE SCULLERY SINK TRIPLE COMPARTMENT. STAINLESS STEEL 57"x27"x12" DEEP, WITH 12" HIGH BACKSPASH AND DRAIN BOARDS ON LEFT SIDE. TRIM 8" CHROME PLATED TUBE SPOUT WITH AERATOR, TWO REQUIRED. CHROME PLATED CAST BRASS BODY. TWIST HANDLE DRAIN WITH BRONZE BODY, STAINLESS STEEL FLAT GRID STRAINER FOR EACH COMPARTMENT.	NO
SERVICE SINK SS-1	JUST	A-18665-TV	20"x15"x12" DEEP STAINLESS STEEL WALL MOUNTED SERVICE SINK. WALL MOUNTED RIGID BRASS SPOUT WITH INDIVIDUAL HANDLES AND PAIL HOOK, VACUUM BREAKER, SOLID CAST BRASS BODY. POLISHED CHROME FINISH. OPEN GRID STAINLESS STEEL STRAINER.	NO
HAND WASH SINK S-1	JUST	A-544-FS	16"x12"x6" DEEP STAINLESS STEEL HAND WASH SINK. TRIM: GOOSENECK FAUCET WITH 4-INCH WRISTBLADE HANDLES 8-INCH CENTERS, STAINLESS STEEL FLAT GRID STRAINER.	NO

* SEE SPECIFICATIONS FOR ADDITIONAL INFORMATION AND MANUFACTURERS.

CODE NOTES:

- THE MECHANICAL WORK SHALL BE DONE IN ACCORDANCE WITH THE 2009 INTERNATIONAL BUILDING CODES, THE 2009 UNIFORM PLUMBING CODE, THE 2011 NATIONAL ELECTRICAL CODE, THE LATEST EDITION OF THE NATIONAL FIRE PROTECTION ASSOCIATION, STATE OF ALASKA AND CITY & BOROUGH OF JUNEAU (CBJ) REQUIREMENTS. ALL ELECTRICAL EQUIPMENT SHALL BEAR THE U.L. LABEL. COORDINATE WITH BUILDING OFFICIAL HAVING AUTHORITY FOR ALL REQUIRED PERMIT SUBMITTALS, TESTING, AND INSPECTIONS.
- ALL PLUMBING WORK SHALL BE DONE IN ACCORDANCE WITH THE CROSS CONTAMINATION AND BACKFLOW PREVENTION REQUIREMENTS OF CBJ. ALL DOMESTIC WATER DRAIN VALVES AND HOSE BIBBS SHALL HAVE VACUUM BREAKERS.
- ALL SHEET METAL WORK SHALL BE DONE IN ACCORDANCE WITH THE LATEST SMACNA REQUIREMENTS AND THE STATE OF ALASKA AND CBJ REQUIREMENTS. VENTILATION IS TO BE DONE VIA A COMBINATION OF NATURAL VENTILATION FOR THE CONCESSION AREAS AND MECHANICAL VENTILATION FOR TOILET ROOMS AND JANITOR ROOMS. TESTING AND BALANCE WORK AND REPORTS OF THE MECHANICAL SYSTEMS ARE REQUIRED.
- KITCHEN ASSUMPTIONS: CONCESSIONS AREA IS INTENDED FOR SALE OF PACKAGED AND WARM-UP STYLE FOOD PRODUCTS UTILIZING A MICRO WAVE OVEN. NO COOKING SURFACES ARE INTENDED AND THUS NO KITCHEN HOODS ARE INCLUDED IN THE PROJECT. NO GREASE INTERCEPTOR IS INCLUDED IN THE PROJECT AS USE OF TRIPLE POT SINK IS ASSUMED TO BE MINIMAL. CHEMICAL DISINFECTION OF KITCHEN WARE IS INTENDED FOR CLEANING PURPOSES WITH 120F HOT WATER SUPPLIED.

SHEET NOTES:

- THE WORK CONSISTS OF FURNISHING LABOR, EQUIPMENT, AND MATERIALS IN ACCORDANCE WITH THE DRAWINGS OR SPECIFICATIONS, OR BOTH, TOGETHER WITH ANY INCIDENTAL ITEMS NOT SHOWN OR SPECIFIED WHICH CAN BE REASONABLY INFERRED OR TAKEN AS BELONGING TO THE WORK AND NECESSARY IN GOOD PRACTICE TO PROVIDE A COMPLETE SYSTEM DESCRIBED OR SHOWN AS INTENDED. EQUIPMENT INSTALLED SHALL BE IDENTICAL AND OF EQUAL QUALITY AS SPECIFIED.
- THE PLUMBING SYSTEMS AND MECHANICAL SYSTEMS SHALL BE INSTALLED FOR THE GREATEST ACCESSIBILITY FOR SERVICE AND MAINTENANCE. THE PLUMBING SYSTEMS SHALL BE INSTALLED TO BE DRAINED AT LOW POINTS, AND UTILIZED FOR SEASONAL USE. COORDINATE RELATED MECHANICAL SCOPE AND TASKS WITH OTHER TRADES AS REQUIRED PRIOR TO PERFORMING WORK.
- PROVIDE OPERATING AND MAINTENANCE MANUALS FOR THE MECHANICAL SYSTEMS. PROVIDE AS-BUILT DRAWINGS OF THE MECHANICAL WORK. PROVIDE TRAINING ON MECHANICAL SYSTEMS.

MECHANICAL SHEET LIST

NUMBER	TITLE
M100	SYMBOLS & SCHEDULES
M201	MELVIN MECHANICAL - FOUNDATION & FLOOR PLAN
M301	DIMOND MECHANICAL - FOUNDATION PLAN
M302	DIMOND MECHANICAL - FLOOR PLAN
M501	DETAILS

EQUIPMENT SCHEDULE - MELVIN

EQUIPMENT	MANUFACTURER	MODEL	CONTROLS/OPTIONS
HOT WATER TANK HWT-2	EEMAX	PA019240TC	ON DEMAND ELECTRIC HOT WATER HEATER 18-19 KW INPUT, 240 VOLT, 1-PHASE. 1.5 GPM FLOW AT 45F GROUND WATER TEMPERATURE AND 70F RISE. LED TEMPERATURE CONTROL PANEL.
COMPRESSION TANK, ET-1	AMTROL	THERM-X-TROL ST-5-C	PRE-PRESSURIZED BUTYL DIAPHRAGM THERMAL EXPANSION CHAMBER, ADJUSTABLE, FACTORY CHARGED TO 40 PSI, SEALED AIR CUSHION. FDA COMPLIANT FOR DOMESTIC HOT WATER USE. ASME RATED. MINIMUM VOLUME 2.0 GALLONS.
LAV MIXING VALVE, TV-1	SELECTRONIC	1070	ROUGH CHROME TEMPERATURE MIXING VALVES. TEMPERATURE LIMITING AND PRESSURE BALANCING WITH COMBINATION STRAINER, CHECK STOPS. 3/4" INLET AND OUTLET SIZE. SEAT AT DISCHARGE TEMPERATURE OF 115°F AND RECORDED FOR O&M. DATA REQUIRED. THERMOSTATIC MIXING VALVES MEETING ASSE 1070. 8" DECK PLATE.
TRAP PRIMER VALVE	PPP, INC.	PR 500	ALL BRASS, 1/2-INCH IPS, SPRING-LOADED, PRESSURE DIFFERENTIAL ACTIVATED WITH VACUUM BRAKING MEANS. MULTIPLE OUTLETS AS REQUIRED AND APPROVED.

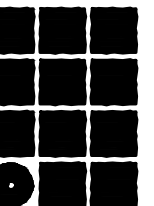
EXHAUST FAN SCHEDULE - MELVIN

EQUIPMENT	AREA SERVED	CFM	TSP, INCHES OF WATER	DESIGN MANUFACTURER AND MODEL	MINIMUM HORSEPOWER ELECTRICAL CHARACTERISTICS	FEATURES AND ACCESSORIES
EF-4	JANITOR	60	0.25	GREENHECK SP-A90	1/8 HP, 30 WATTS, 120 VOLT	CEILING MOUNTED, WALL CAP SIMILAR TO GREENHECK WC-10x3, CONTROLLED BY WALL SWITCH.
EF-5	MECH	300	0.25	GREENHECK SBE-1H20-4	1/4 HP, 120 VOLT	WALL MOUNT PROPELLER TYPE. BELT DRIVE, SAFETY CAGE. CONTROLLED BY WALL SPEED CONTROL SWITCH.

PLUMBING EQUIPMENT SCHEDULE - MELVIN

EQUIPMENT	MANUFACTURER	MODEL	CONTROLS/OPTIONS	ADA COMPATIBLE
LAV FAUCET F-1	AMERICAN STANDARD	1340.119	METERING PILLAR TAP FAUCET. VANDAL RESISTANT SOLID BRASS CONSTRUCTION. PUSH BUTTON HANDLE, 0.5 GPM, ADJUSTABLE FLOW CYCLE CONTROL.	YES
HOSE BIBB HB	ZURN	Z-1321	BRONZE OR BRASS WITH INTEGRAL MOUNTING FLANGE, REPLACEABLE HEXAGONAL DISC, HOSE THREAD SPOUT, CHROME PLATED WHERE EXPOSED WITH LOCK SHIELD AND REMOVABLE KEY, INTEGRAL VACUUM BREAKER. AUTOMATIC DRAINING. PROVIDE SPARE KEY.	NO
FLOOR DRAIN FD	ZURN	ZN-415	LACQUERED CAST-IRON TWO PIECE BODY WITH DOUBLE DRAINAGE FLANGE, WEEP HOLES, REVERSIBLE CLAMP COLLAR, 1/2-INCH TRAP PRIMER CONNECTION, AND ROUND ADJUSTABLE NICKEL-BRONZE 6-INCH DIAMETER STRAINER WITH SQUARE HOLES, WITH VANDAL PROOF SECURE TOP.	-
TRIPLE POT SINK S-2	JUST	NSFB-345-18L	INSTITUTIONAL GRADE SCULLERY SINK TRIPLE COMPARTMENT. STAINLESS STEEL 57"x27"x12" DEEP, WITH 12" HIGH BACKSPASH AND DRAIN BOARDS ON LEFT SIDE. TRIM 8" CHROME PLATED TUBE SPOUT WITH AERATOR, TWO REQUIRED. CHROME PLATED CAST BRASS BODY. TWIST HANDLE DRAIN WITH BRONZE BODY, STAINLESS STEEL FLAT GRID STRAINER FOR EACH COMPARTMENT.	NO
SERVICE SINK SS-1	AMERICAN STANDARD	FLORWELL	BOWL FLOOR MOUNTED: 28 x 28 x 8 INCH HIGH ENAMELED CAST IRON CORNER DESIGN, WITH RIM GUARD AND 3 INCH DRAIN. STAINLESS STEEL STRAINER. TRIM: ASME A112.18.1 EXPOSED WALL TYPE COMBINATION SUPPLY WITH LEVER HANDLES, SPOUT WALL BRACE, VACUUM BREAKER, HOSE END SPOUT, STRAINERS, ECCENTRIC ADJUSTABLE INLETS, INTEGRAL SCREWDRIER STOPS WITH COVERING CAPS AND ADJUSTABLE THREADED WALL FLANGES. ACCESSORIES FOR SS-1: 5 FEET OF 1/2-INCH DIAMETER PLAIN END REINFORCED RUBBER HOSE. HOSE CLAMP HANGER. PAIL HOOK. MOP HANGER.	NO
HAND WASH SINK S-1	JUST	A-544-FS	16"x12"x6" DEEP STAINLESS STEEL HAND WASH SINK. TRIM: GOOSENECK FAUCET WITH 4-INCH WRISTBLADE HANDLES 8-INCH CENTERS, STAINLESS STEEL FLAT GRID STRAINER.	NO

* SEE SPECIFICATIONS FOR ADDITIONAL INFORMATION AND MANUFACTURERS.



Jensen Yorba Lott Inc.

522 West 10th Street
Juneau, Alaska 99801
phone 907-586-1070
fax 907-586-3959
jensenyorbaltott.com

MURRAY & ASSOCIATES P.C.
CONSULTING ENGINEERS



City & Borough of Juneau
CBJ PARKS RESTROOM AND CONCESSIONS IMPROVEMENTS
 Juneau, Alaska
 CBJ Project NO. E16-165

CONSTRUCTION DOCUMENTS

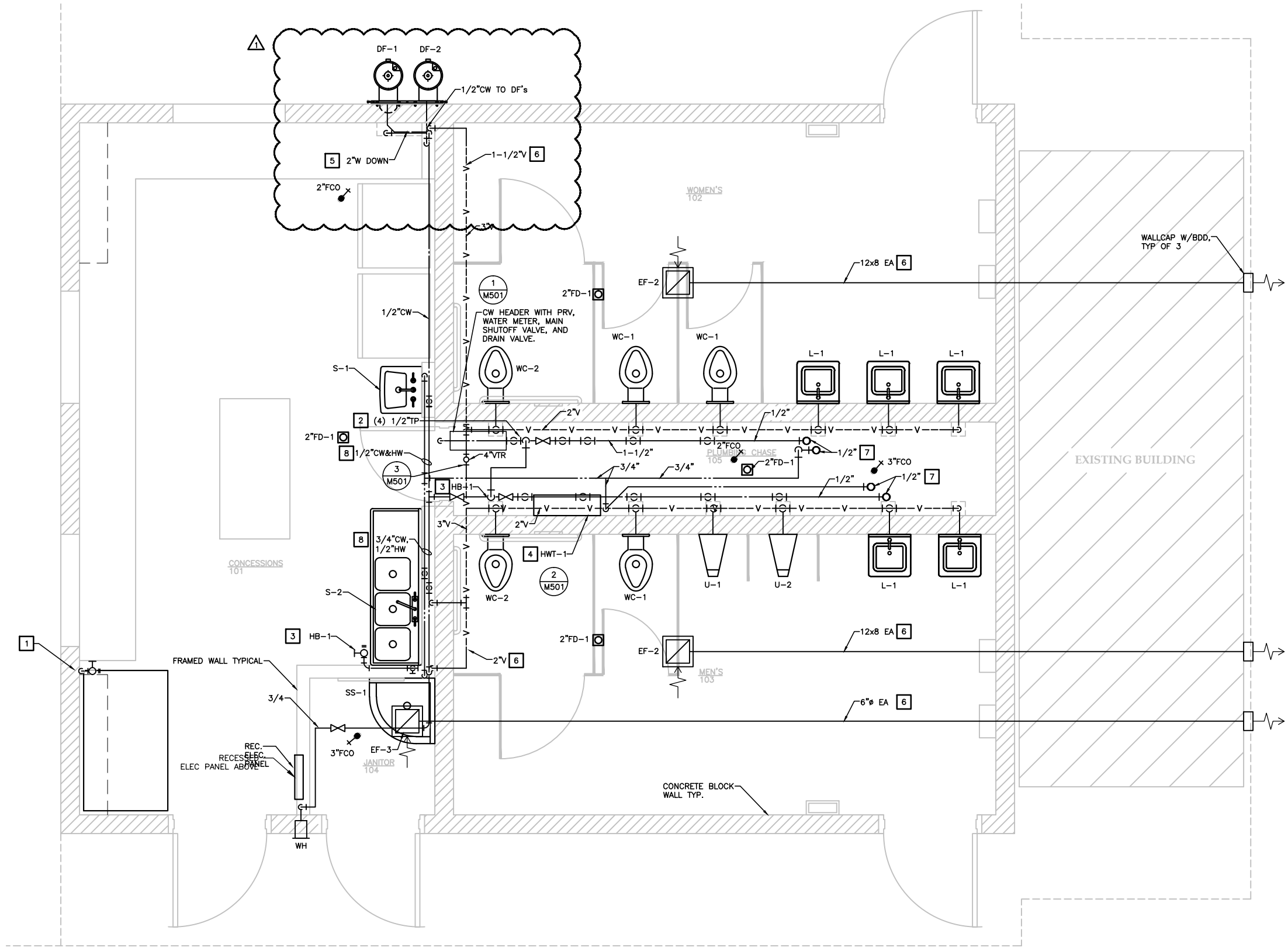
REVISIONS

- ADDENDUM 1 4-8-16

SHEET TITLE
SYMBOLS & SCHEDULES

DATE: March 16, 2016
FILE: 15023

M100



SHEET NOTES:

1. SEE PLUMBING DIAGRAM FOR COMPLETE CONFIGURATION, PIPING, SIZES, VALVES AND APPURTENANCES. SEE PLUMBING FIXTURE CONNECTION SCHEDULE FOR INDIVIDUAL CONNECTION SIZES.
2. WATER AND VENT PIPING INSTALLED AS SHOWN SUPPORTED FROM CHANNEL FRAMING SECURED HORIZONTAL VENT PIPING INSTALLED AT MINIMUM 7'-0" ABOVE FINISHED FLOOR.
3. ALL DRAIN VALVES AND HOSE BIBBS ARE TO HAVE A VACUUM BREAKER AND CAP.
4. PIPES ARE SHOWN STAGGERED FOR CLARITY. PIPING TO BE STACKED VERTICALLY ON WALL IN PLUMBING CHASE.
5. INSTALL SHUTOFF VALVES FOR CW MAIN FOR BUILDING SHUTOFF (2"), MENS (1-1/2"), WOMENS (1-1/2"), AND CONCESSION (3/4").
6. PIPING ARRANGED TO BE DRAINED ON A SEASONAL BASIS.

CONSTRUCTION NOTES:

- 1 1/2" CW STOP AND RB FOR COUNTER USE AT 3'-0" AFF OR ABOVE COUNTER HEIGHT.
- 2 1/2" CW DOWN TO TRAP PRIMER.
- 3 LOCATE CW HB-1 AT 2'-0" AFF.
- 4 INSTALL HWT ON WALL AT APPROX. 4'-0" AFF, PIPE RELIEF VALVE TO FLOOR.
- 5 OFFSET (2) WASTES AND INSTALL (2) P-TRAP UNDER CONCESSION COUNTER AND IN ENCLOSURE (IAW)
- 6 IN ATTIC.
- 7 COMMON UP TO MULTIPLE FIXTURES. SEE PLUMBING DIAGRAM
- 8 PIPING IN WALL.

Jensen Yorba Lott Inc.
 522 West 10th Street
 Juneau, Alaska 99801
 phone 907-586-1070
 fax 907-586-3959
 jensenyorbalt.com

MURRAY & ASSOCIATES P.C.
 CONSULTING ENGINEERS

 P.O. BOX 21081
 JUNEAU, AK 99802
 MURRAYPC.COM
 TEL: 907 780-6151 FAX: 907 780-6182

STATE OF ALASKA
 PROFESSIONAL ENGINEER
 JAMES H. MURRAY
 ME 7870
 LICENSE NO. 1000
 ISSUE DATE: 03/16/2016

City & Borough of Juneau
CBJ PARKS RESTROOM AND CONCESSIONS IMPROVEMENTS
 Juneau, Alaska
 CBJ Project NO. E16-165

CONSTRUCTION DOCUMENTS

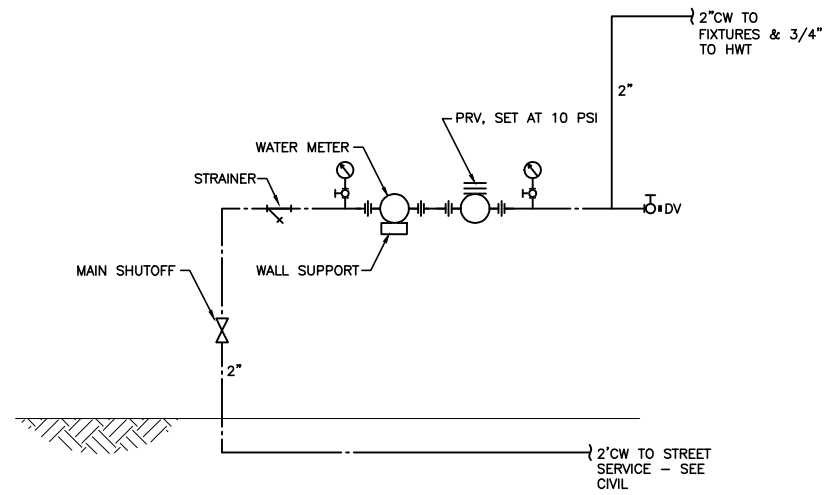
REVISIONS

△	ADDENDUM 1 4-8-16
△	
△	

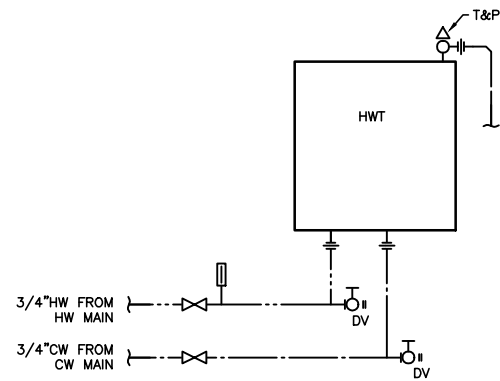
SHEET TITLE
 DIMOND MECHANICAL - FLOOR PLAN

DATE: March 16, 2016
 FILE: 15023

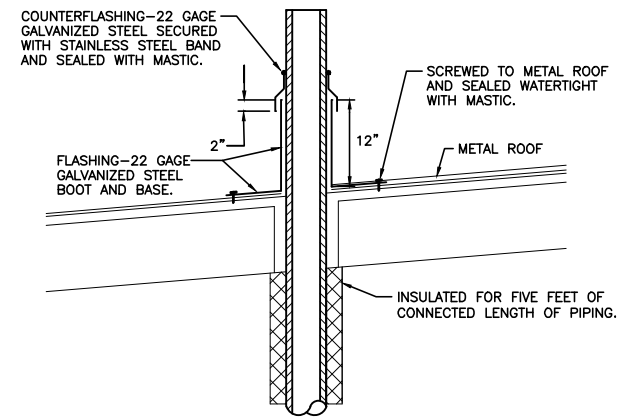
M302



1 WATER SERVICE DIAGRAM



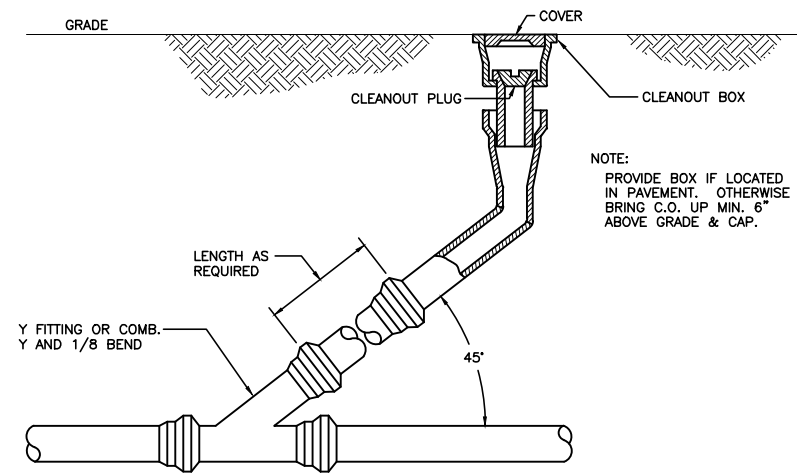
2 HWT DETAIL



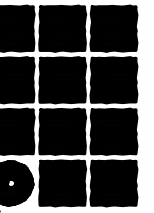
VENT PIPING LESS THAN 4-INCH SIZE

NOTE: LOCATE VENT PIPE CENTERED BETWEEN METAL ROOF RIBS. DO NOT CUT METAL ROOFING RIBS.

3 VENT THROUGH ROOF
NO SCALE



4 YARD CLEANOUT DETAIL
NO SCALE



Jensen Yorba Lott Inc.

522 West 10th Street
Juneau, Alaska 99801
phone 907-586-1070
fax 907-586-3959
jensenyorbалott.com

MURRAY & ASSOCIATES P.C.
CONSULTING ENGINEERS

M&A
P.O. BOX 21081
JUNEAU, AK 99802
MURRAYPC.COM
TEL: 907 780-6151 FAX: 907 780-6182



City & Borough of Juneau
CBJ PARKS RESTROOM AND CONCESSIONS IMPROVEMENTS
Juneau, Alaska
CBJ Project NO. E16-165

CONSTRUCTION DOCUMENTS

REVISIONS

△ ADDENDUM 1 4-8-16

△

△

△

SHEET TITLE DETAILS

△

.

.

.

DATE: March 16, 2016

FILE: 15023

.

.

.

.

.

.

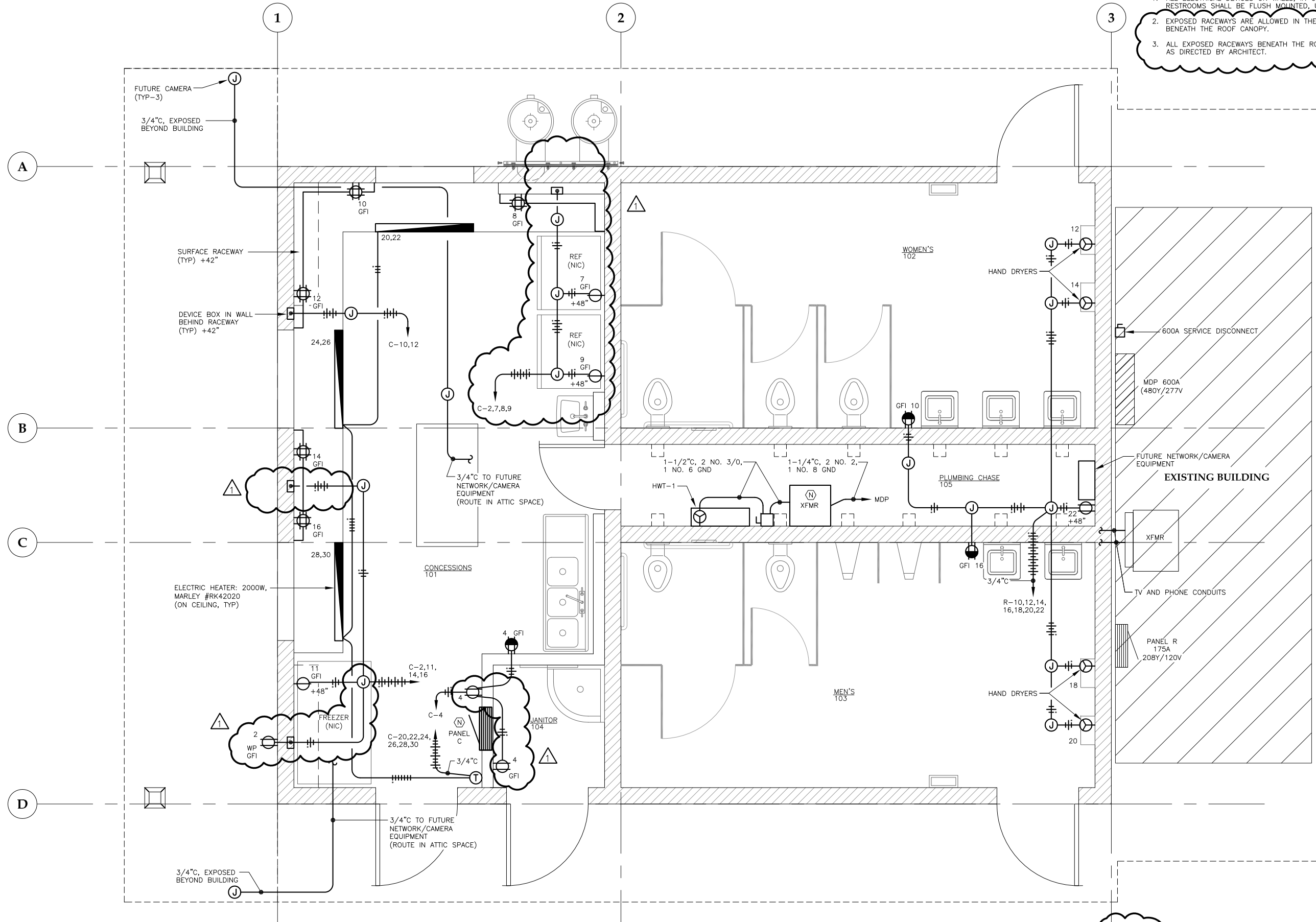
.

.

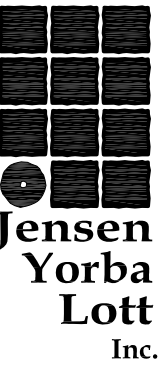
M501

F:\PROJECTS\100 JENSEN YORBA LOTT INC\292 CBJ PARK CONCESSIONS & RESTROOMS\DRAWINGS\ADDENDUM\E201.DWG

Plotted 4/8/2016 9:48 AM by Peggy Leslie



- NOTES:
1. ALL ELECTRICAL DEVICES ON WALLS, IN CONCESSIONS 101, AND RESTROOMS SHALL BE FLUSH MOUNTED, UON.
 2. EXPOSED RACEWAYS ARE ALLOWED IN THE PLUMBING CHASE AND BENEATH THE ROOF CANOPY.
 3. ALL EXPOSED RACEWAYS BENEATH THE ROOF CANOPY TO BE ROUTED AS DIRECTED BY ARCHITECT.



**Jensen
Yorba
Lott
Inc.**

522 West 10th Street
Juneau, Alaska 99801
phone 907-586-1070
fax 907-586-3959
jensenyorbalott.com



March 16, 2016

**City & Borough of Juneau
CBJ PARKS RESTROOM AND
CONCESSIONS IMPROVEMENTS**
Juneau, Alaska
CBJ Project NO. E16-165

BID DOCUMENTS

REVISIONS

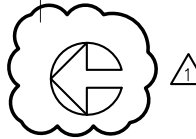
▲	ADDENDUM NO. 1
▲	APRIL 8, 2016
▲	
▲	

SHEET TITLE
**DIMOND PARK
FLOOR PLAN -
POWER**

DATE: March 16, 2016
FILE: 15023

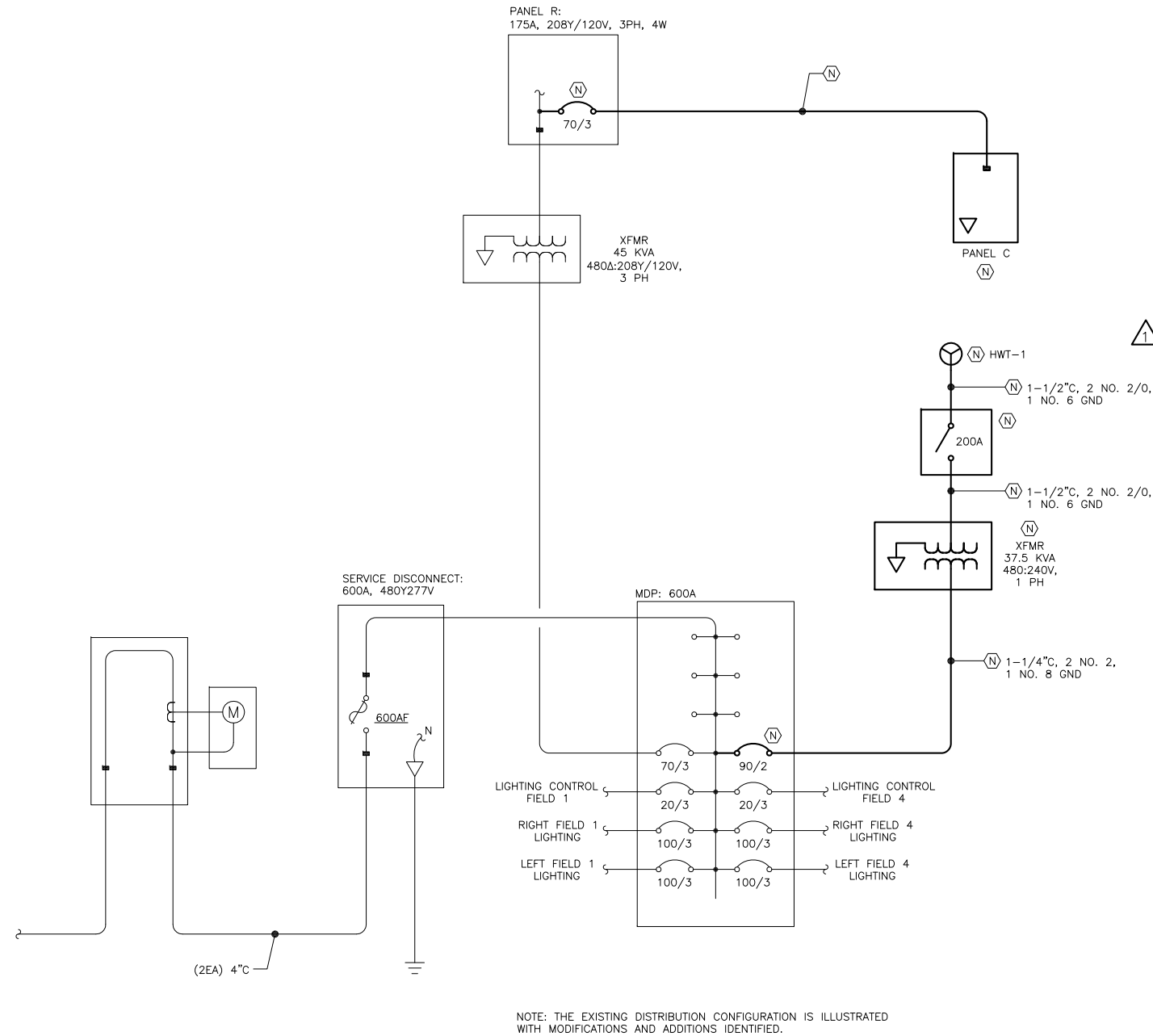
1 DIMOND PARK FLOOR PLAN - POWER

SCALE: 0 1' 2' 4'



E201

Plotted 4/8/2016 9:48 AM by Peggy Leslie F:\PROJECTS\100 JENSEN YORBA LOTT INC\292 CBJ PARK CONCESSIONS & RESTROOMS\DRAWINGS\ADDENDUM\E202.DWG

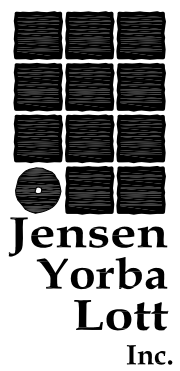


1 SINGLE LINE DIAGRAM - POWER DISTRIBUTION SYSTEM

PANEL R (E)		SIZE	VOLTS/PHASE			MAIN		LOCATION		MOUNT
		225 AMPS	208Y/120V, 3 PH			MLO		EXISTING BUILDING		SURFACE
C K T NO	DESCRIPTION	BREAKER AMP/ POLE	KVA			BREAKER AMP/ POLE	DESCRIPTION		C K T NO	
			CKT	AØ	BØ		CØ	CKT		
1	EXTG LOAD - SCOREBOARD FIELD ONE	20/1	0.0	0.0		0.0	20/1	EXTG LOAD - INSIDE LIGHTS	2	
3	EXTG LOAD - SCOREBOARD FIELD ONE	20/1	0.0		0.0	0.0	20/1	EXTG LOAD - RECEPTACLES	4	
5	EXTG LOAD - FIELD ONE SCORE-KEEPER BLDG	20/1	0.0			0.0	20/1	EXTG LOAD - HEATER	6	
7	EXTG LOAD - FIELD ONE SCORE-KEEPER BLDG	20/1	0.0	0.0		0.0	20/1	EXTG LOAD - HEATER	8	
9	EXTG LOAD - FIELD TWO SCORE-KEEPER BLDG	20/1	0.0		0.2	0.2	20/1	WOMEN'S 102	10	
11	EXTG LOAD - FIELD TWO SCORE-KEEPER BLDG	20/1	0.0			1.2	20/1	WOMEN'S 102 HAND DRYER	12	
13	EXTG LOAD - FIELD THREE SCORE-KEEPER BLDG	20/1	0.0	1.2		1.2	20/1	WOMEN'S 102 HAND DRYER	14	
15	EXTG LOAD - FIELD THREE SCORE-KEEPER BLDG	20/1	0.0		0.2	0.2	20/1	MEN'S 103	16	
17	EXTG LOAD - FIELD FOUR SCORE-KEEPER BLDG	20/1	0.0			1.2	20/1	MEN'S 103 HAND DRYER	18	
19	EXTG LOAD - FIELD FOUR SCORE-KEEPER BLDG	20/1	0.0	1.2		1.2	20/1	MEN'S 103 HAND DRYER	20	
21	EXTERIOR, RESTRMS, PLUMB, JAN, EF-1,2,3 LTG	20/1	0.8		0.9	0.1	20/1	PLUMBING CHASE 105	22	
23	SPACE		0.0			0.2	20/1	JANITOR 104	24	
25			0.0	0.0		0.0		SPACE	26	
27			0.0			0.0			28	
29			0.0			0.0			30	
31			0.0	0.0		0.0			32	
33			0.0			0.0			34	
35			0.0			0.0			36	
37			0.0	5.8		5.8	70/3	PANEL C	38	
39			0.0		5.3	5.3	--	----	40	
41			0.0			5.3	5.3	----	42	
BALANCED CONNECTED LOAD: 22.7 KVA / 63.1 AMPS				8.2	6.6	7.9				
MAXIMUM PHASE LOAD: 8.2 KVA / 68.3 AMPS										

PANEL C (N)		SIZE	VOLTS/PHASE			MAIN		LOCATION		MOUNT
		100 AMPS	208Y/120V, 3 PH			MLO		CONCESSIONS 101		FLUSH
C K T NO	DESCRIPTION	BREAKER AMP/ POLE	KVA			BREAKER AMP/ POLE	DESCRIPTION		C K T NO	
			CKT	AØ	BØ		CØ	CKT		
1	CONCESSIONS 101 LTG	20/1	0.3	0.7		0.4	20/1	BUILDING EXTERIOR	2	
3	SPACE		0.0		1.6	1.6	20/1	CONCESSIONS 101, JANITOR 106	4	
5	SPACE		0.0			0.0		SPACE	6	
7	CONCESSIONS 101 N. REFRIGERATOR	20/1	0.7	1.9		1.2	20/1	CONCESSIONS 101 N. COUNTER	8	
9	CONCESSIONS 101 S. REFRIGERATOR	20/1	0.7		1.9	1.2	20/1	CONCESSIONS 101 N. COUNTER	10	
11	CONCESSIONS 101 FREEZER	20/1	0.9			2.1	20/1	CONCESSIONS 101 W. COUNTER	12	
13	SPACE		0.0	1.2		1.2	20/1	CONCESSIONS 101 W. COUNTER	14	
15			0.0		1.2	1.2	20/1	CONCESSIONS 101 W. COUNTER	16	
17			0.0			0.0	20/1		18	
19			0.0	1.0		1.0	20/2	CONCESSIONS 101 N. ELECTRIC HEATER	20	
21			0.0		1.0	1.0	--	----	22	
23			0.0			1.0	20/2	CONCESSIONS 101 N.W. ELECTRIC HEATER	24	
25			0.0	1.0		1.0	--	----	26	
27			0.0		1.0	1.0	20/2	CONCESSIONS 101 S.W. ELECTRIC HEATER	28	
29			0.0			1.0	1.0	--	30	
31			0.0	0.0		0.0		SPACE	32	
33			0.0		0.0	0.0			34	
35			0.0			0.0			36	
37			0.0	0.0		0.0			38	
39			0.0		0.0	0.0			40	
41			0.0			0.0			42	
BALANCED CONNECTED LOAD: 16.6 KVA / 46.1 AMPS				5.8	6.7	4.1				
MAXIMUM PHASE LOAD: 6.7 KVA / 56.0 AMPS										

MECHANICAL EQUIPMENT SCHEDULE																
DESIGNATION			LOAD					CIRCUITING				CONTROL				
ITEM	DESCRIPTION	LOCATION	HP	KW	AMPS	VOLTS	PHASE	RATING	CONDUCTORS			DISCONNECT SWITCH	FUSE	STARTER SIZE	CONTROL	REMARKS
EF-1	EXHAUST FAN	MEN'S 103			0.77	120	1	20/1	2 NO. 12, 1 NO. 12 GND							
EF-2	EXHAUST FAN	WOMEN'S 102			0.43	120	1	20/1	2 NO. 12, 1 NO. 12 GND							
EF-3	EXHAUST FAN	JANITOR 104			0.34	120	1	20/1	2 NO. 12, 1 NO. 12 GND							
HWT-1	INSTANT WATER HEATER	PLUMBING CHASE 105		27		240	1	90/2	2 NO. 3/0, 1 NO. 6 GND							



522 West 10th Street
Juneau, Alaska 99801
phone 907-586-1070
fax 907-586-3959
jensenyorbalott.com



March 16, 2016

City & Borough of Juneau
CBJ PARKS RESTROOM AND CONCESSIONS IMPROVEMENTS
 Juneau, Alaska
 CBJ Project NO. E16-165

BID DOCUMENTS

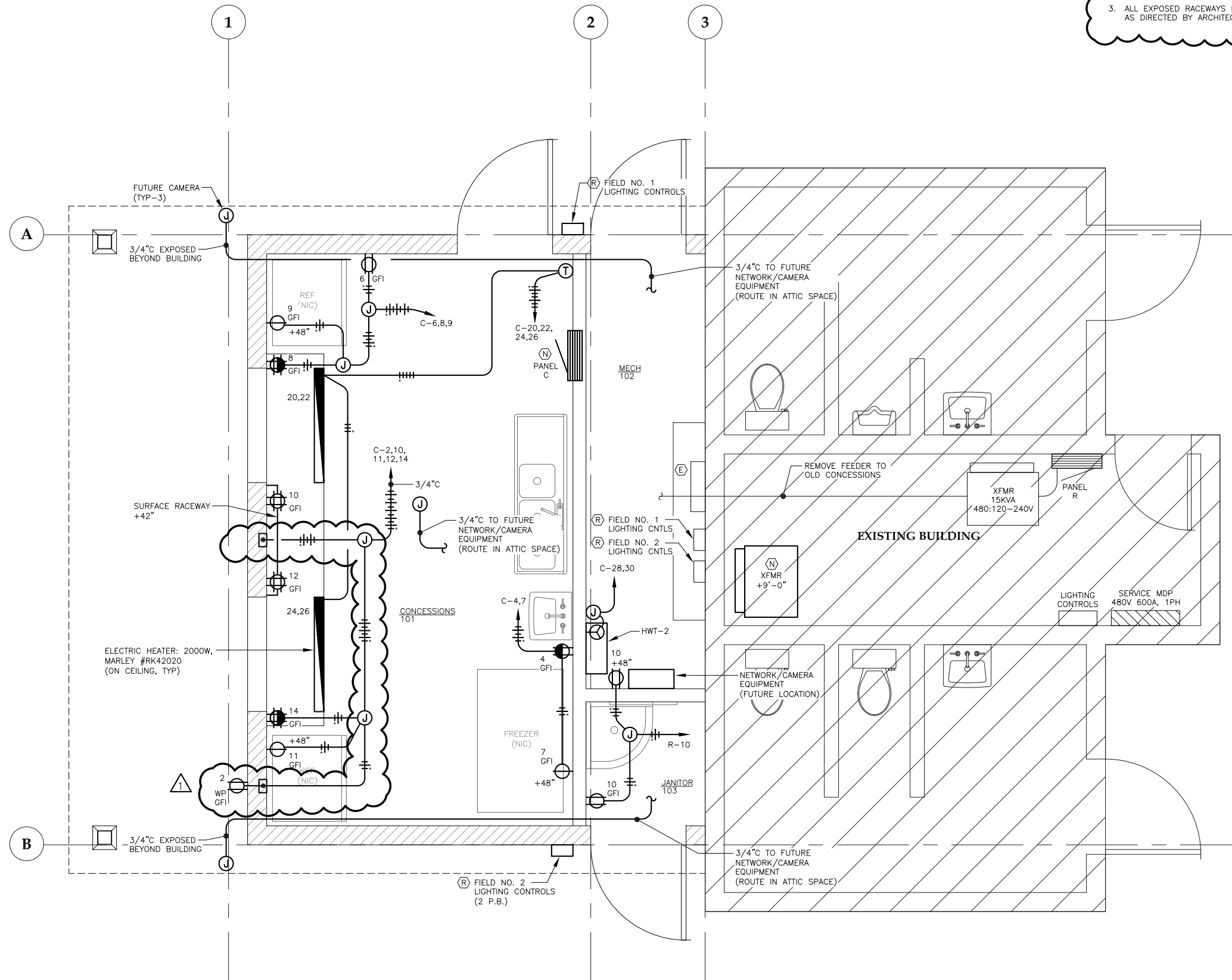
REVISIONS
 ▲ ADDENDUM NO. 1
 APRIL 8, 2016

SHEET TITLE
 DIMOND PARK
 SINGLE LINE
 DIAGRAM
 PANEL SCHEDULES

DATE: March 16, 2016
 FILE: 15023

E202

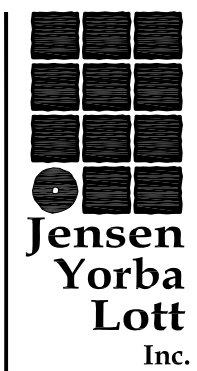
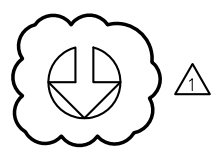
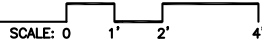
Plotted 4/8/2016 9:48 AM by Peggy Leslie F:\PROJECTS\100 JENSEN YORBA LOTT INC\292 CBJ PARK CONCESSIONS & RESTROOMS\DRAWINGS\ADDENDUM\E210.DWG



NOTES:

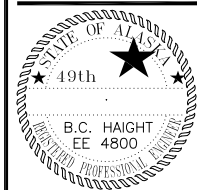
1. DURING CONSTRUCTION TEMPORARILY LOCATE EXISTING FIELD LIGHTING CONTROLS TO THE WEST END AT THE EXISTING BUILDING. COORDINATE WITH ARCHITECT.
2. EXPOSED RACEWAYS ARE ALLOWED IN THE MECH 102 AND BENEATH THE ROOF CANOPY.
3. ALL EXPOSED RACEWAYS BENEATH THE ROOF CANOPY TO BE ROUTED AS DIRECTED BY ARCHITECT.

1 MELVIN PARK FLOOR PLAN - POWER



**Jensen
Yorba
Lott
Inc.**

522 West 10th Street
Juneau, Alaska 99801
phone 907-586-1070
fax 907-586-3959
jensenyorbaltott.com



March 16, 2016

**City & Borough of Juneau
CBJ PARKS RESTROOM AND
CONCESSIONS IMPROVEMENTS**
Juneau, Alaska
CBJ Project NO. E16-165

BID DOCUMENTS

REVISIONS

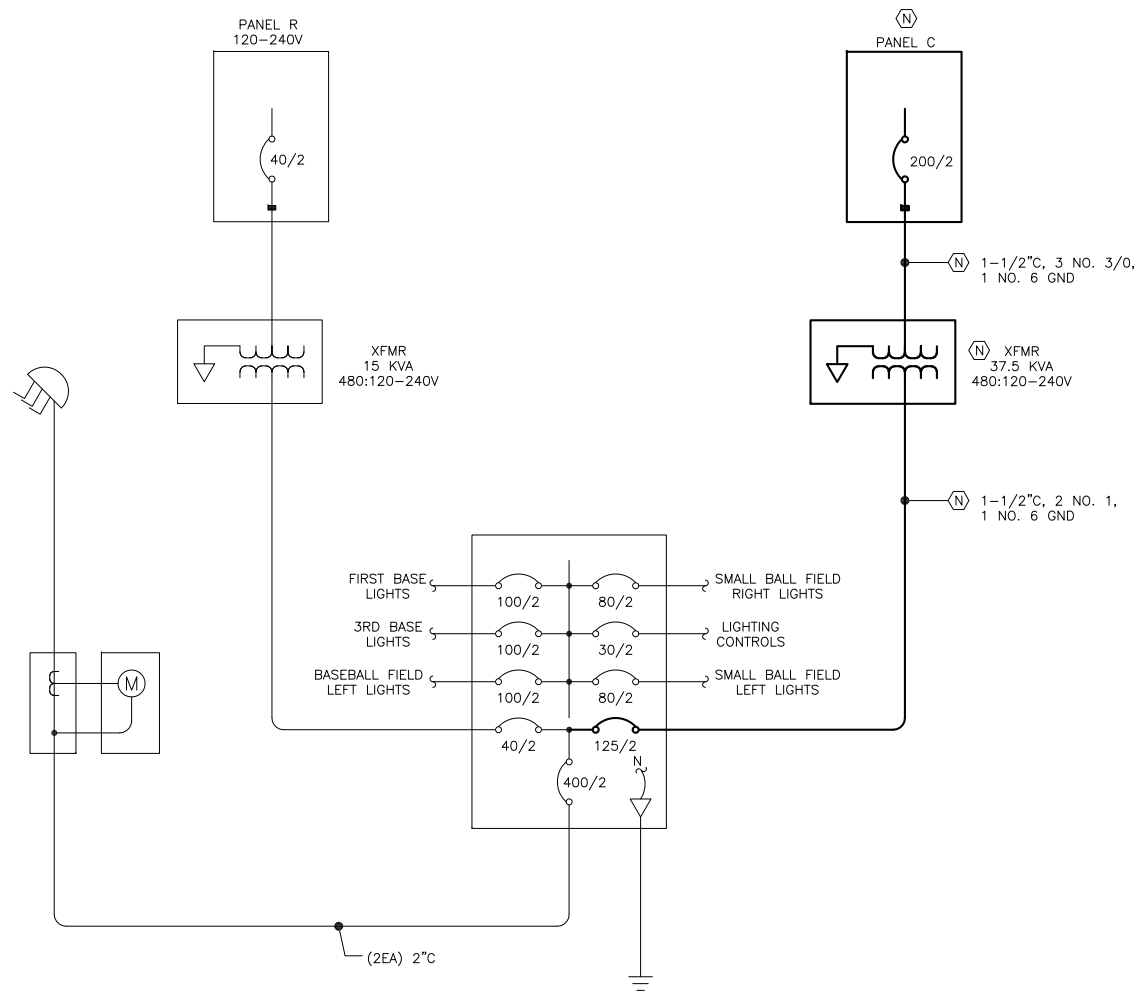
▲	ADDENDUM NO. 1
▲	APRIL 8, 2016
▲	
▲	

SHEET TITLE
**MELVIN PARK
FLOOR PLAN -
POWER**

DATE: March 16, 2016
FILE: 15023

E210

Plotted 4/8/2016 9:48 AM by Peggy Leslie F:\PROJECTS\100 JENSEN YORBA LOTT INC\292 CBJ PARK CONCESSIONS & RESTROOMS\DRAWINGS\ADDENDUM\E211.DWG



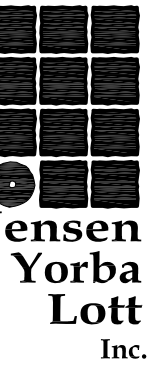
NOTE: THE EXISTING DISTRIBUTION CONFIGURATION IS ILLUSTRATED WITH MODIFICATIONS AND ADDITIONS IDENTIFIED.

1 SINGLE LINE DIAGRAM - POWER DISTRIBUTION SYSTEM

PANEL R		SIZE	VOLTS/PHASE			MAIN	LOCATION	MOUNT	
		225 AMPS	120/240V, 1 PH			MLO	ELECTRICAL ROOM	SURFACE	
C K T NO	DESCRIPTION	BREAKER AMP/ POLE	KVA			BREAKER AMP/ POLE	DESCRIPTION	C K T NO	
			CKT	AØ	BØ				CKT
1	EXTG LOAD - OUTSIDE LIGHTS	20/1	0.0	0.0	0.0	?	EXTG LOAD - MAIN	2	
3	EXTG LOAD - INSIDE LIGHTS, EF-5 (1/4 HP)	20/1	0.7		0.7	---	---	4	
5	EXTG LOAD - RECEPTACLE NEXT TO LIGHT	20/1	0.0	0.0	0.0	20/2	EXTG LOAD - SPARE	6	
7	SPARE	20/1	0.0		0.0	---	---	8	
9	EXTG LOAD - TRAP HEATERS	20/1	0.0	0.4		0.4	20/1	MECH 102, JANITOR 103	10
11	EXTG LOAD - RECEPTACLE BELOW PANEL	20/1	0.0		0.0	0.0	---	SPACE	12
13	EXTG LOAD - HAND DRYERS	20/2	0.0	0.0	0.0	0.0	20/1	EXTG LOAD - CONCESSION	14
15	----	---	0.0		0.0	0.0	20/1	EXTG LOAD - CONCESSION	16
17	EXTG LOAD - HAND DRYERS	20/1	0.0	0.0	0.0	0.0	20/1	EXTG LOAD - GFCI OUTSIDE BACK WALL	18
19	EXTG LOAD - TIME CLOCK FIELD NO. 2	20/1	0.0		0.0	0.0	20/1	EXTG LOAD - GFCI OUTSIDE BACK WALL	20
21	EXTERIOR BUILDING MOUNTED	LTG	20/1	0.1	0.1			SPACE	22
23	MECH. 102, JANITOR 103, EF-4	LTG	20/1	0.1	0.1	0.0		SPACE	24
NEW TOTAL CONNECTED LOAD: 1.3 KVA / 5.4 AMPS			0.5	0.8					
NEW LOAD MAXIMUM PHASE LOAD: 1.0 KVA / 8.3 AMPS									

PANEL C		SIZE	VOLTS/PHASE			MAIN	LOCATION	MOUNT		
		200 AMPS	120/240V, 1 PH			200/2	CONCESSIONS 101	FLUSH		
C K T NO	DESCRIPTION	BREAKER AMP/ POLE	KVA			BREAKER AMP/ POLE	DESCRIPTION	C K T NO		
			CKT	AØ	BØ				CKT	
1	CONCESSIONS 101	LTG	20/1	0.3	0.5	0.2	20/1	EXTERIOR BUILDING	2	
3			20/1	0.0		0.2	0.2	20/1	CONCESSIONS 101 E. WALL	4
5			20/1	0.0	0.2		0.2	20/1	CONCESSIONS 101 N. WALL	6
7	CONCESSIONS 101 FREEZER		20/1	0.9		2.1	1.2	20/1	CONCESSIONS 101 N. COUNTER	8
9	CONCESSIONS 101 N. REFRIGERATOR		20/1	0.7	1.9		1.2	20/1	CONCESSIONS 101 CENTER COUNTER	10
11	CONCESSIONS 101 S. REFRIGERATOR		20/1	0.7		1.9	1.2	20/1	CONCESSIONS 101 CENTER COUNTER	12
13	SPACE		20/1	0.0	1.2		1.2	20/1	CONCESSIONS 101 S. COUNTER	14
15			20/1	0.0		0.0	0.0	20/1		16
17			20/1	0.0	0.0		0.0	20/1		18
19			20/1	0.0		1.0	1.0	20/1	CONCESSIONS 101 N. ELECTRIC HEATER	20
21			20/1	0.0	1.0		1.0	20/1	----	22
23			20/1	0.0		1.0	1.0	20/1	CONCESSIONS 101 S. ELECTRIC HEATER	24
25			20/1	0.0	1.0		1.0	20/1	----	26
27			20/1	0.0		9.0	9.0	90/2	MECH 102 HWT-2	28
29			20/1	0.0	9.0		9.0	---	----	30
TOTAL CONNECTED LOAD: 30.0 KVA / 125.0 AMPS				14.8	15.2					
LOAD MAXIMUM PHASE LOAD: 15.2 KVA / 127.0 AMPS										

MECHANICAL EQUIPMENT SCHEDULE														
DESIGNATION			LOAD					CIRCUITING				CONTROL		
ITEM	DESCRIPTION	LOCATION	HP	KW	AMPS	VOLTS	PHASE	RATING	CONDUCTORS		DISCONNECT		REMARKS	
											SWITCH	FUSE	STARTER SIZE	CONTROL
EF-4	EXHAUST FAN	MEN'S 103			0.34	120	1	20/1	2 NO. 12, 1 NO. 12 GND					
EF-5	EXHAUST FAN	WOMEN'S 102	1/4			120	1	20/1	2 NO. 12, 1 NO. 12 GND					
HWT-2	INSTANT WATER HEATER	PLUMBING CHASE 105		18		240	1	90/2						



522 West 10th Street
Juneau, Alaska 99801
phone 907-586-1070
fax 907-586-3959
jensenyorbaltott.com



March 16, 2016

City & Borough of Juneau
CBJ PARKS RESTROOM AND
CONCESSIONS IMPROVEMENTS
 Juneau, Alaska
 CBJ Project NO. E16-165

BID DOCUMENTS

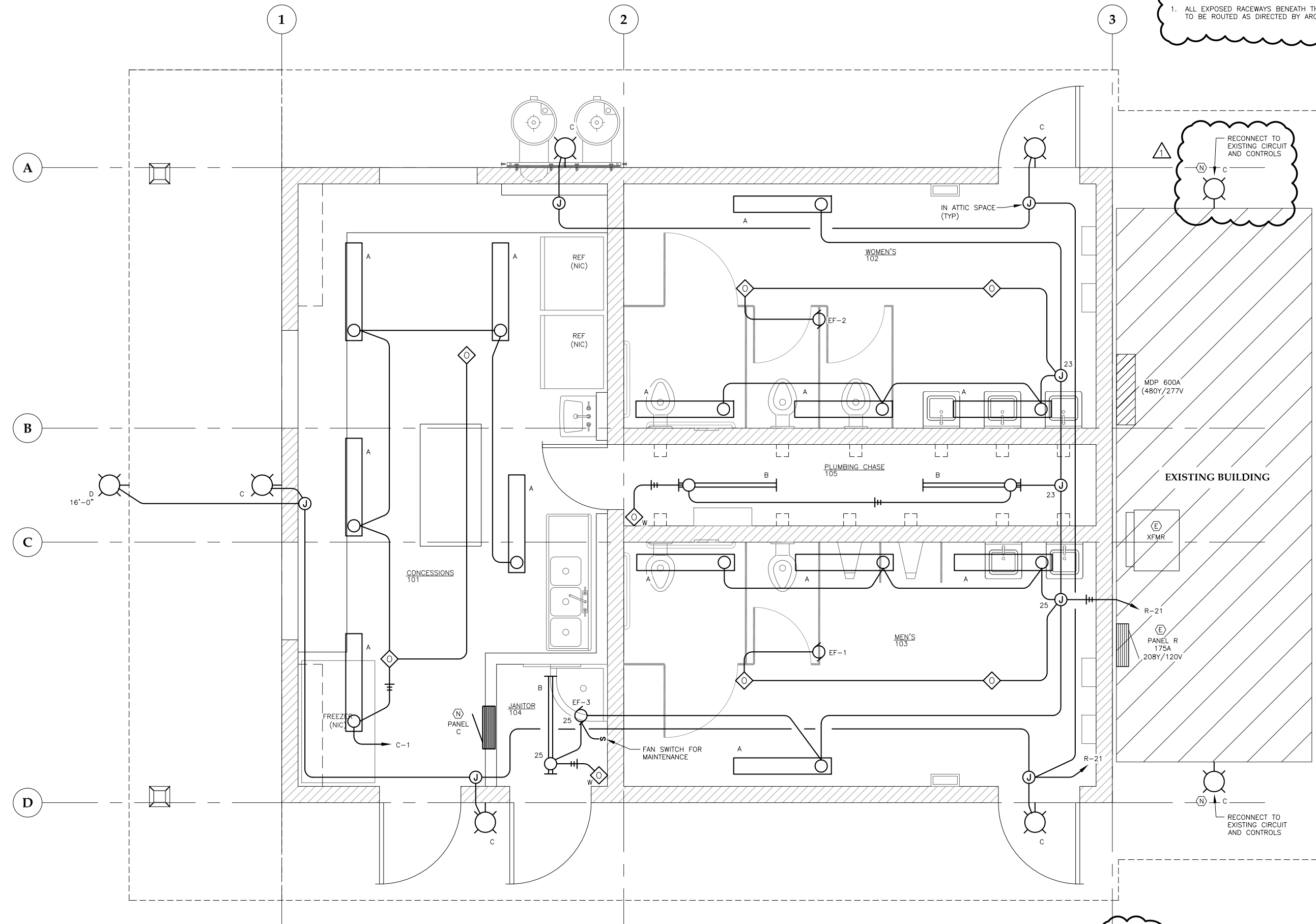
REVISIONS
 ▲ ADDENDUM NO. 1
 ▲ APRIL 8, 2016
 ▲

SHEET TITLE
 MELVIN PARK
 SINGLE LINE
 DIAGRAM

DATE: March 16, 2016
 FILE: 15023

E211

Plotted 4/8/2016 9:48 AM by Peggy Leslie F:\PROJECTS\100 JENSEN YORBA LOTT INC\292 CBJ PARK CONCESSIONS & RESTROOMS\DRAWINGS\ADDENDUM\E301.DWG

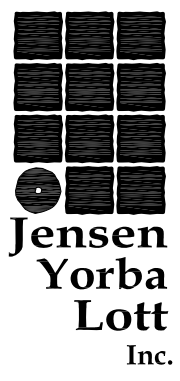
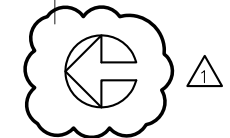
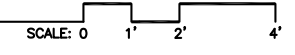


NOTES:
 1. ALL EXPOSED RACEWAYS BENEATH THE ROOF CANOPY TO BE ROUTED AS DIRECTED BY ARCHITECT.

RECONNECT TO EXISTING CIRCUIT AND CONTROLS

RECONNECT TO EXISTING CIRCUIT AND CONTROLS

1 DIMOND PARK FLOOR PLAN - LIGHTING



Jensen Yorba Lott Inc.
 522 West 10th Street
 Juneau, Alaska 99801
 phone 907-586-1070
 fax 907-586-3959
 jensenyorbalott.com



March 16, 2016

City & Borough of Juneau
CBJ PARKS RESTROOM AND CONCESSIONS IMPROVEMENTS
 Juneau, Alaska
 CBJ Project NO. E16-165

BID DOCUMENTS

REVISIONS

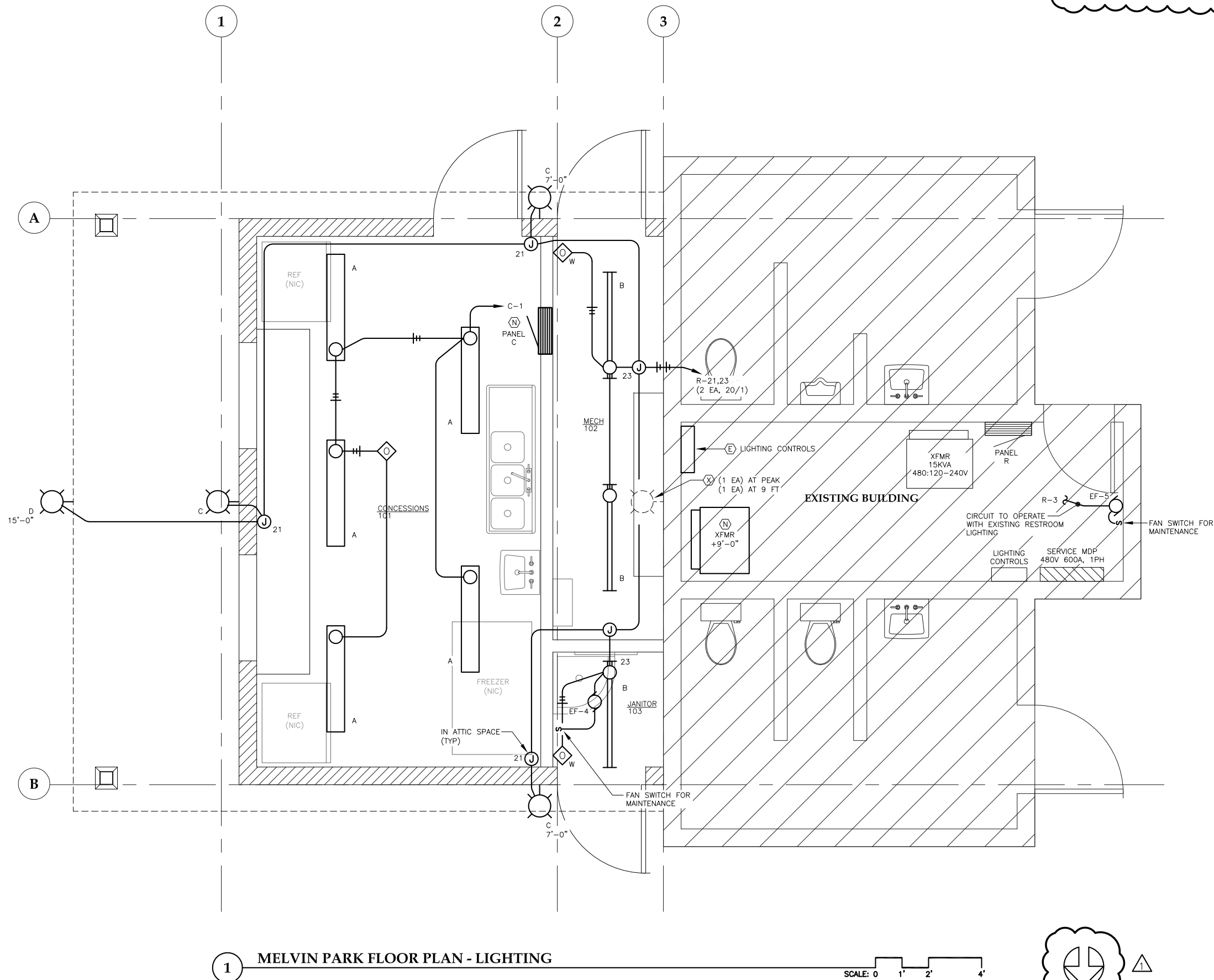
▲	ADDENDUM NO. 1
▲	APRIL 8, 2016
▲	

SHEET TITLE
DIMOND PARK FLOOR PLAN - LIGHTING

DATE: March 16, 2016
 FILE: 15023

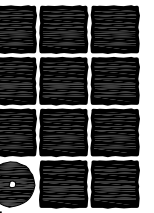
E301

Plotted 4/8/2016 9:48 AM by Peggy Leslie F:\PROJECTS\100 JENSEN YORBA LOTT INC\292 CBJ PARK CONCESSIONS & RESTROOMS\DRAWINGS\ADDENDUM\E310.DWG



NOTES:

1. EXPOSED RACEWAYS ARE ALLOWED IN THE MECH 102 AND BENEATH THE ROOF CANOPY.
2. ALL EXPOSED RACEWAYS BENEATH THE ROOF CANOPY TO BE ROUTED AS DIRECTED BY ARCHITECT.



**Jensen
Yorba
Lott
Inc.**

522 West 10th Street
Juneau, Alaska 99801
phone 907-586-1070
fax 907-586-3959
jensenyorbaltott.com



March 16, 2016

City & Borough of Juneau
**CBJ PARKS RESTROOM AND
CONCESSIONS IMPROVEMENTS**
Juneau, Alaska
CBJ Project NO. E16-165

BID DOCUMENTS

REVISIONS

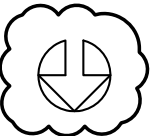
▲	ADDENDUM NO. 1
▲	APRIL 8, 2016
▲	
▲	

SHEET TITLE
**MELVIN PARK
FLOOR PLAN -
LIGHTING**

DATE: March 16, 2016
FILE: 15023

1 MELVIN PARK FLOOR PLAN - LIGHTING

SCALE: 0 1' 2' 4'



E310