

NOTES:
 1. SUGGESTED EQUIPMENT ARRANGEMENT. FINAL ARRANGEMENT TO BE DETERMINED.

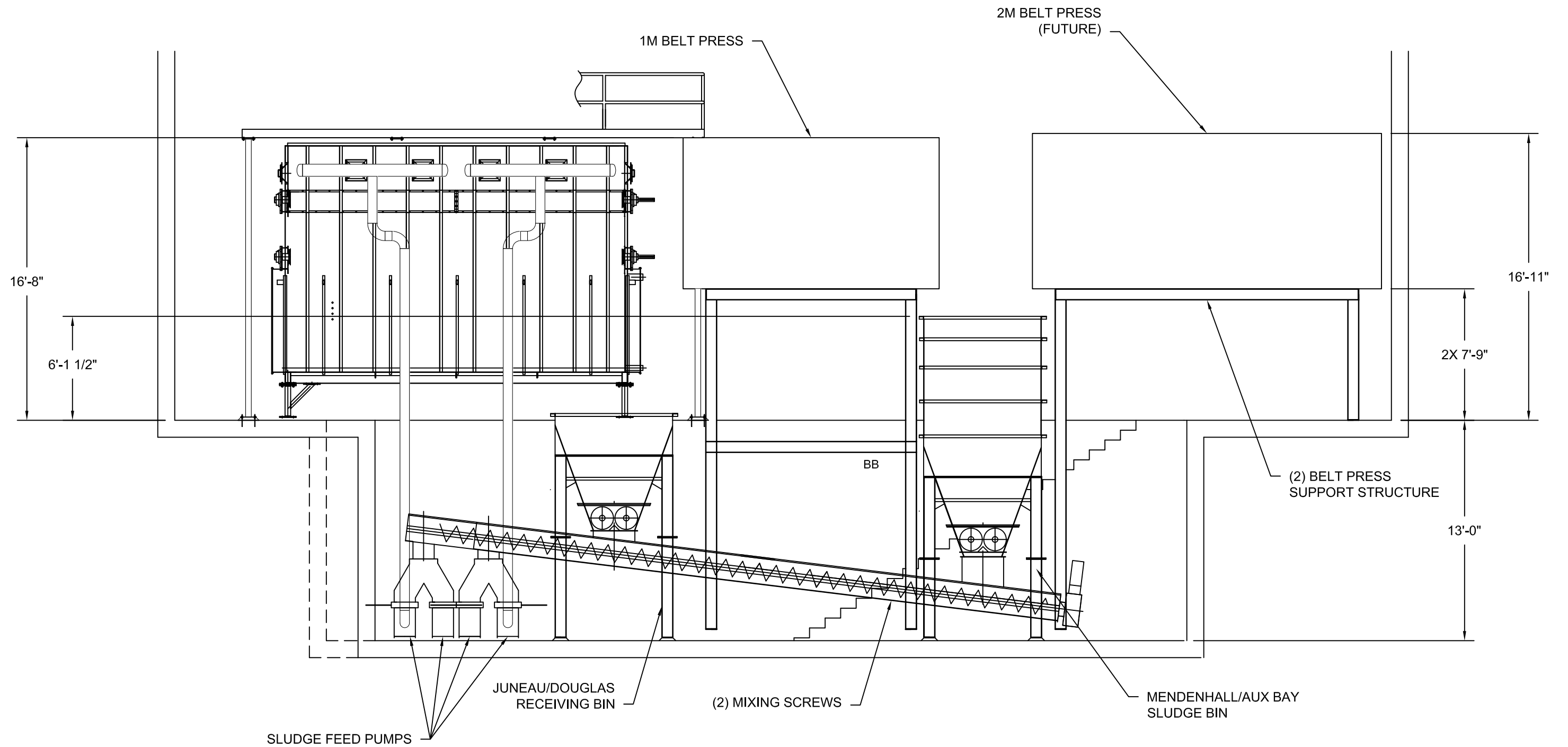
REV	DESCRIPTION	DRAWN	APPR	DATE
D	MOVED BAGGING STATION, ADDED SHT 3 & 4	SRW	.	02.17.16
C	REVISED LAYOUT, ADDED ACCESS PATHS & SECT A	SRW	JJM	11.03.15
B	REVISED SUGGESTED LAYOUT	JCC	SRW	10.26.15
A	PRELIMINARY RELEASE	SRW	.	06.12.15

ALL INFORMATION CONTAINED ON THIS DOCUMENT IS THE PROPERTY OF KRUGER AND/OR ITS AFFILIATES. THE DESIGN CONCEPTS AND INFORMATION CONTAINED HEREIN ARE PROPRIETARY TO KRUGER AND ARE SUBMITTED IN CONFIDENCE. THEY ARE NOT TRANSFERABLE AND MUST BE USED ONLY FOR THE PURPOSE FOR WHICH THE DOCUMENT IS EXPRESSLY SUBMITTED. THEY MUST NOT BE DISCLOSED, REPRODUCED, LOANED OR USED IN ANY OTHER MANNER WITHOUT THE EXPRESS WRITTEN CONSENT OF KRUGER. KRUGER ASSUMES NO RESPONSIBILITY OR LIABILITY FOR THE USE OF THIS DOCUMENT OR THE DESIGN CONCEPTS AND INFORMATION CONTAINED HEREIN FOR ANOTHER PROJECT OR IN A MANNER THAT DOES NOT RELATE TO THE FITNESS OR PURPOSE OF THIS DOCUMENT. IN NO EVENT SHALL THIS DOCUMENT OR THE DESIGN CONCEPTS AND INFORMATION CONTAINED HEREIN BE USED IN ANY MANNER DETRIMENTAL TO THE INTEREST OF KRUGER. ALL PATENT RIGHTS ARE RESERVED. ACCEPTANCE OF THE DELIVERY OF THIS DOCUMENT CONSTITUTES AGREEMENT TO THESE TERMS AND CONDITIONS.

VEOLIA
 I. KRUGER, INC.
 4001 WESTON PARKWAY
 CARY, NC 27513
 (919) 677-8310

5700102402
 JUNEAU, AK

BIOCON SITE LAYOUT 8318 DRYER					
DRAWN	CHECKED	SCALE	DRAWING NO	SHEET	REV
SRW	.	1:240	850M-0002	1 of 4	D



SECTION A-A

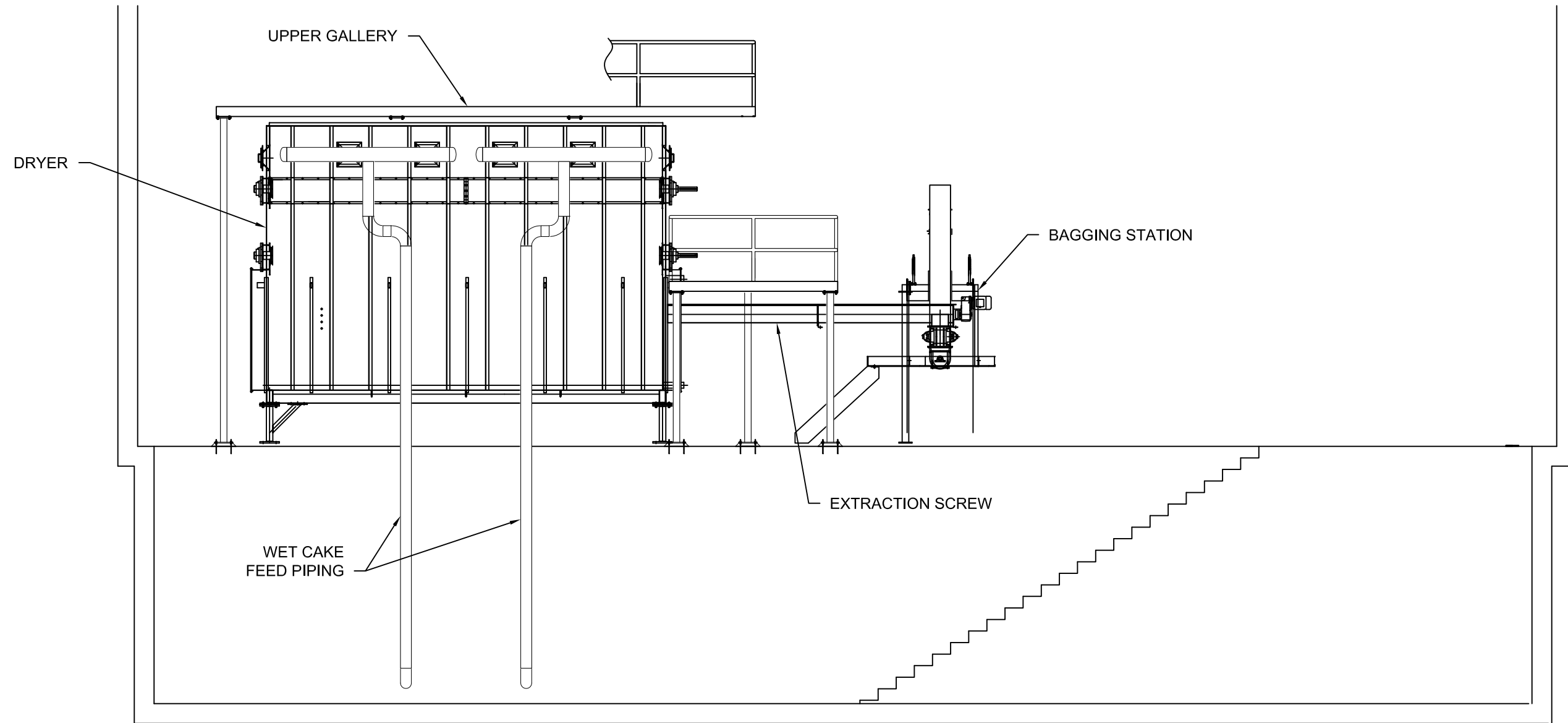
ALL INFORMATION CONTAINED ON THIS DOCUMENT IS THE PROPERTY OF KRUGER AND/OR ITS AFFILIATES. THE DESIGN CONCEPTS AND INFORMATION CONTAINED HEREIN ARE PROPRIETARY TO KRUGER AND ARE SUBMITTED IN CONFIDENCE. THEY ARE NOT TRANSFERABLE AND MUST BE USED ONLY FOR THE PURPOSE FOR WHICH THE DOCUMENT IS EXPRESSLY SUBMITTED. THEY MUST NOT BE DISCLOSED, REPRODUCED, LOANED OR USED IN ANY OTHER MANNER WITHOUT THE EXPRESS WRITTEN CONSENT OF KRUGER. KRUGER ASSUMES NO RESPONSIBILITY OR LIABILITY FOR THE USE OF THIS DOCUMENT OR THE DESIGN CONCEPTS AND INFORMATION CONTAINED HEREIN FOR ANOTHER PROJECT OR IN A MANNER THAT DOES NOT RELATE TO THE FITNESS OR PURPOSE OF THIS DOCUMENT. IN NO EVENT SHALL THIS DOCUMENT OR THE DESIGN CONCEPTS AND INFORMATION CONTAINED HEREIN BE USED IN ANY MANNER DETRIMENTAL TO THE INTEREST OF KRUGER. ALL PATENT RIGHTS ARE RESERVED. ACCEPTANCE OF THE DELIVERY OF THIS DOCUMENT CONSTITUTES AGREEMENT TO THESE TERMS AND CONDITIONS.

VEOLIA
 I. KRUGER, INC.
 4001 WESTON PARKWAY
 CARY, NC 27513
 (919) 677-8310

5700102402
 JUNEAU, AK

BIOCON
 SITE LAYOUT
 8318 DRYER

DRAWN SRW	CHECKED .	SCALE 1 : 72	DRAWING NO 850M-0002	SHEET 2 of 4	REV D
--------------	--------------	-----------------	-------------------------	-----------------	----------



SECTION B-B

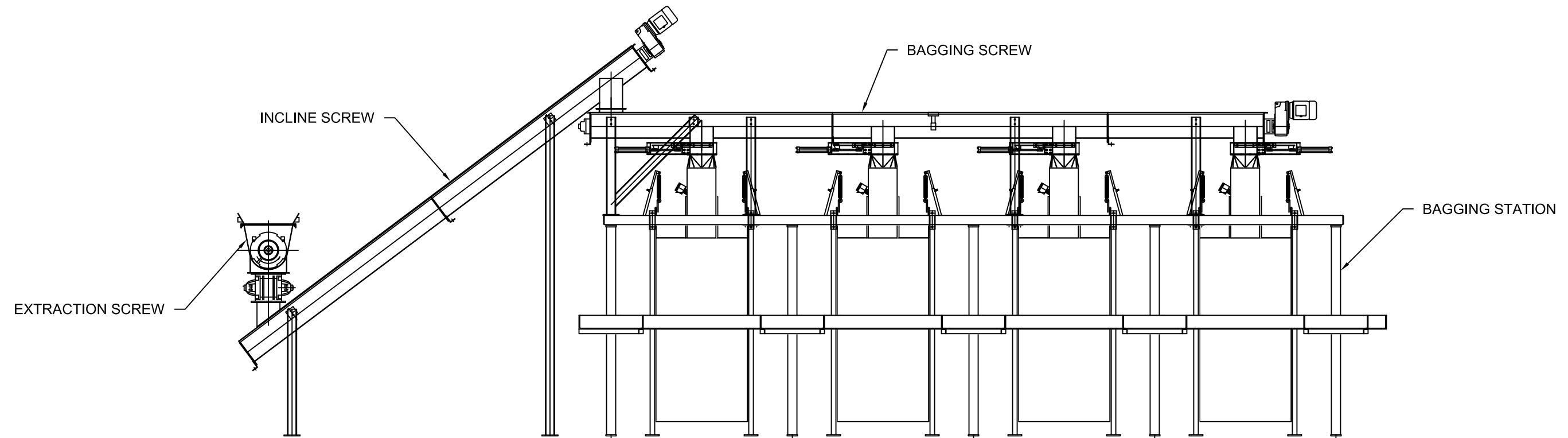
ALL INFORMATION CONTAINED ON THIS DOCUMENT IS THE PROPERTY OF KRUGER AND/OR ITS AFFILIATES. THE DESIGN CONCEPTS AND INFORMATION CONTAINED HEREIN ARE PROPRIETARY TO KRUGER AND ARE SUBMITTED IN CONFIDENCE. THEY ARE NOT TRANSFERABLE AND MUST BE USED ONLY FOR THE PURPOSE FOR WHICH THE DOCUMENT IS EXPRESSLY SUBMITTED. THEY MUST NOT BE DISCLOSED, REPRODUCED, LOANED OR USED IN ANY OTHER MANNER WITHOUT THE EXPRESS WRITTEN CONSENT OF KRUGER. KRUGER ASSUMES NO RESPONSIBILITY OR LIABILITY FOR THE USE OF THIS DOCUMENT OR THE DESIGN CONCEPTS AND INFORMATION CONTAINED HEREIN FOR ANOTHER PROJECT OR IN A MANNER THAT DOES NOT RELATE TO THE FITNESS OR PURPOSE OF THIS DOCUMENT. IN NO EVENT SHALL THIS DOCUMENT OR THE DESIGN CONCEPTS AND INFORMATION CONTAINED HEREIN BE USED IN ANY MANNER DETRIMENTAL TO THE INTEREST OF KRUGER. ALL PATENT RIGHTS ARE RESERVED. ACCEPTANCE OF THE DELIVERY OF THIS DOCUMENT CONSTITUTES AGREEMENT TO THESE TERMS AND CONDITIONS.

VEOLIA
 I. KRUGER, INC.
 4001 WESTON PARKWAY
 CARY, NC 27513
 (919) 677-8310

5700102402
 JUNEAU, AK

BIOCON
 SITE LAYOUT
 8318 DRYER

DRAWN SRW	CHECKED .	SCALE 1 : 72	DRAWING NO 850M-0002	SHEET 3 of 4	REV D
--------------	--------------	-----------------	-------------------------	-----------------	----------



SECTION C-C
(DRYER NOT SHOWN FOR CLARITY)

ALL INFORMATION CONTAINED ON THIS DOCUMENT IS THE PROPERTY OF KRUGER AND/OR ITS AFFILIATES. THE DESIGN CONCEPTS AND INFORMATION CONTAINED HEREIN ARE PROPRIETARY TO KRUGER AND ARE SUBMITTED IN CONFIDENCE. THEY ARE NOT TRANSFERABLE AND MUST BE USED ONLY FOR THE PURPOSE FOR WHICH THE DOCUMENT IS EXPRESSLY SUBMITTED. THEY MUST NOT BE DISCLOSED, REPRODUCED, LOANED OR USED IN ANY OTHER MANNER WITHOUT THE EXPRESS WRITTEN CONSENT OF KRUGER. KRUGER ASSUMES NO RESPONSIBILITY OR LIABILITY FOR THE USE OF THIS DOCUMENT OR THE DESIGN CONCEPTS AND INFORMATION CONTAINED HEREIN FOR ANOTHER PROJECT OR IN A MANNER THAT DOES NOT RELATE TO THE FITNESS OR PURPOSE OF THIS DOCUMENT. IN NO EVENT SHALL THIS DOCUMENT OR THE DESIGN CONCEPTS AND INFORMATION CONTAINED HEREIN BE USED IN ANY MANNER DETRIMENTAL TO THE INTEREST OF KRUGER. ALL PATENT RIGHTS ARE RESERVED. ACCEPTANCE OF THE DELIVERY OF THIS DOCUMENT CONSTITUTES AGREEMENT TO THESE TERMS AND CONDITIONS.

VEOLIA I. KRUGER, INC.
4001 WESTON PARKWAY
CARY, NC 27513
(919) 677-8310

5700102402
JUNEAU, AK

BIOCON
SITE LAYOUT
8318 DRYER

DRAWN SRW	CHECKED .	SCALE 1 : 48	DRAWING NO 850M-0002	SHEET 4 of 4	REV D
--------------	--------------	-----------------	-------------------------	-----------------	----------