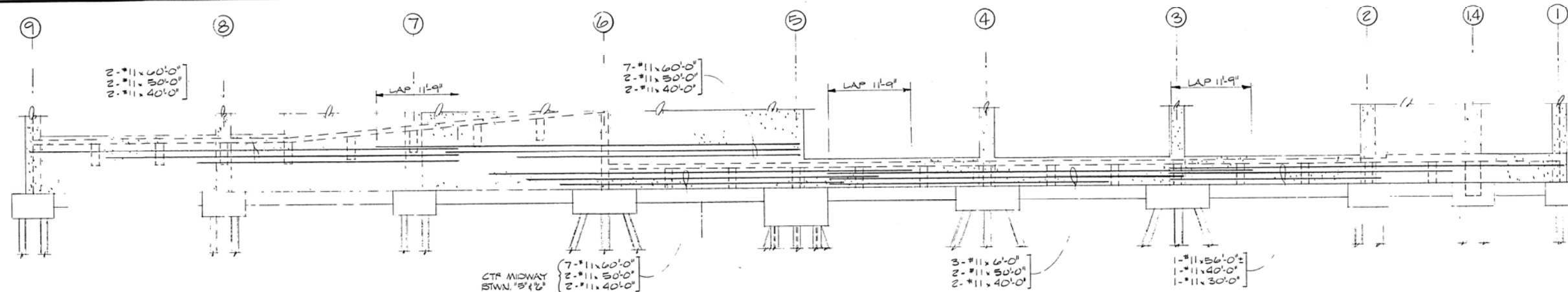


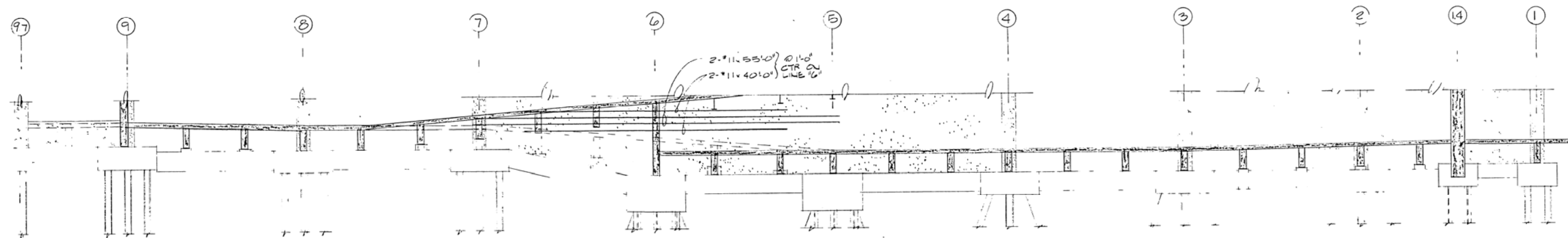
Kiewit Construction Company
1300 Aloha Street, Seattle, Wa. 98109 Tel. (206) 624-8333

Engineers
Victor O. Gray and Company

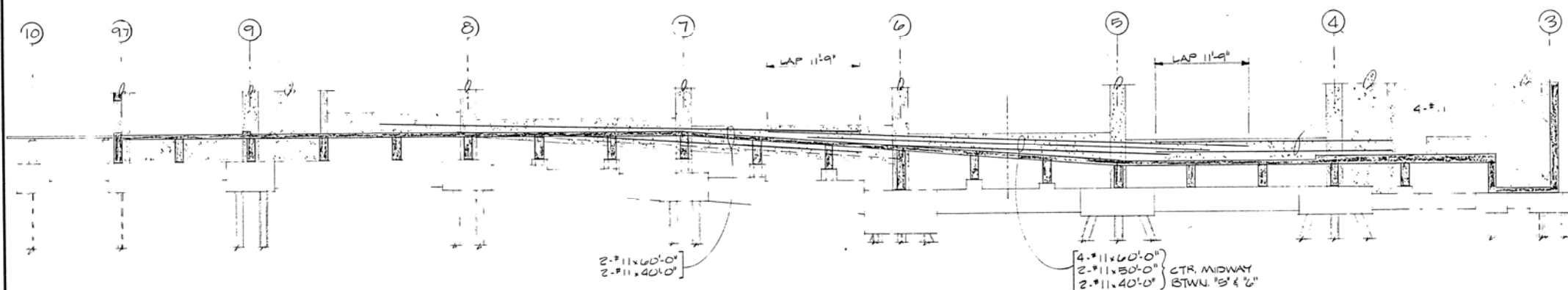
Architects
Clayton R. Joyce Architects



PARTIAL ELEVATION - LINE "A"



PARTIAL ELEVATION - LINE "B"



PARTIAL ELEVATION - LINE "C"

FOR INFORMATION ONLY
IT IS THE CONTRACTOR'S
RESPONSIBILITY TO VERIFY
EXISTING CONDITIONS

GENERAL STRUCTURAL NOTES CONT'D FROM SHT. 51

STEEL DECK
STEEL DECK SHALL BE OF DEPTH AND GAGE INDICATED ON PLANS. DESIGN SHALL CONFORM TO THE REQUIREMENTS OF AISI "SPECIFICATION FOR THE DESIGN OF COLD-FORMED STEEL STRUCTURAL MEMBERS".

LUMBER
PLANKS - DOUG-FIR LARCH. COMMERCIAL DECK GRADE 1650.

WESTERN LUMBER GRADING RULES - LATEST EDITION BY W.W.P.A. EXISTING BY INSPECTION.

SEE DRAWING FOR NAILING

GLUED LAMINATED LUMBER
BEAMS - DOUG-FIR LARCH, COMBINATION 22F - V3 INDUSTRIAL GRADE.

MEMBERS OR PORTIONS THEREOF EXPOSED TO THE WEATHER SHALL BE FABRICATED WITH WATERPROOF GLUE.

ALL MEMBERS INDUSTRIAL APPEARANCE GRADE UNLESS SPECIFICALLY NOTED OTHERWISE. BUNDLE WRAP AND PROTECT FROM WEATHER. INDIVIDUALLY WRAP ARCHITECTURAL APPEARANCE GRADE MEMBERS. FABRICATOR SHALL CONFORM TO CURRENT AISC SPECIFICATIONS. SUBMIT SHOP DRAWINGS FOR APPROVAL PRIOR TO FABRICATION.

HOLLOW UNIT MASONRY/BRICK MASONRY
CONCRETE MASONRY UNITS (CMU) SHALL BE ASTM C-90, GRADE N HALF AND HALF. Fm = 1350 PSI.

GROUT f'c = 2000 PSI
MORTAR-TYPE S f'c = 1800 PSI
REINFORCING STEEL ASTM A-615, GRADE 60 f's = 24,000 PSI
LAP BARS 32 DIAMETERS

REINFORCEMENT IN WALLS SHALL BE TIED TO MATCHING FOUNDATION DOWELS BEFORE GROUTING. ANCHOR ALL WALLS TO ABUTTING CONCRETE AS SHOWN ON DRAWINGS.

Kiewit Construction Company
1300 Aloha Street, Seattle, Wa. 98109 Tel. (206) 624-8333
Engineers
Victor O. Gray and Company
Architects
Clayton R. Joyce Architects

Revisions
11- -84 REISSUED
3-0-85 REVISED & REISSUED

Date 8-3-84
Scale
Job No. 8304
Drawn By ODA
Checked By
Reviewed By VOT

Professional Stamp



Marine Park **PARKING GARAGE & PARK FACILITY**
CITY/BOROUGH OF JUNEAU
PARTIAL ELEVATIONS **S-13**
Drawing Title Sheet Number
CONTRACT E84-120

COLUMN SCHEDULE

COLUMN TYPE	A	A	A	A	B	C	D	A,D	E	E	A,E	F	D,E
COLUMN MARK	C-4, C-5, C-6, C-7, C-8	A-2, A-3, A-4, A-7, A-8	A-14, A-3-14, A-7-14	A-5-1, B-1, B-14, B-17, B-18, B-19, B-20, C-3, C-9	B-4, B-7	A-9, B-9	B-8	B-2 B-3	B-5, B-6	A-6	A-5	A-1, C-9,7	B-3-22
TOP OF COL.											SEE S11 24, 24		
ROOF													
2 ND FLR	SIZE VERT TIES	24x24 4-#9 #3 @ 18"	24x24 4-#9 #3 @ 18"	24x24 4-#9 #3 @ 18"	24x24 4-#9 #3 @ 18"	24x24 4-#9 #3 @ 18"	24x24 4-#9 #3 @ 18"	24x24 4-#9 #3 @ 18"	24x24 4-#9 #3 @ 18"	24x24 4-#9 #3 @ 18"	24x24 4-#9 #3 @ 18"	24x24 4-#9 #3 @ 18"	24x24 4-#9 #3 @ 18"
2 ND FLR	SIZE VERT TIES	24x24 4-#9 #3 @ 18"	24x24 4-#9 #3 @ 18"	24x24 4-#9 #3 @ 18"	24x24 4-#9 #3 @ 18"	24x24 4-#9 #3 @ 18"	24x24 4-#9 #3 @ 18"	24x24 4-#9 #3 @ 18"	24x24 4-#9 #3 @ 18"	24x24 4-#9 #3 @ 18"	24x24 4-#9 #3 @ 18"	24x24 4-#9 #3 @ 18"	24x24 4-#9 #3 @ 18"
1 ST FLR	SIZE VERT TIES	24x24 4-#9 #3 @ 18"	24x24 4-#9 #3 @ 18"	24x24 4-#9 #3 @ 18"	24x24 4-#9 #3 @ 18"	24x24 4-#9 #3 @ 18"	24x24 4-#9 #3 @ 18"	24x24 4-#9 #3 @ 18"	24x24 4-#9 #3 @ 18"	24x24 4-#9 #3 @ 18"	24x24 4-#9 #3 @ 18"	24x24 4-#9 #3 @ 18"	24x24 4-#9 #3 @ 18"
TOP OF PILE CAP													

VARIES, SEE S3 & TYP COL REINF DETAIL

-S= SPACING
SHOWN IN SCHED.

SEE COL. SCHED.
USE CIRCULAR TIES @
1ST STORY C-2
S 3

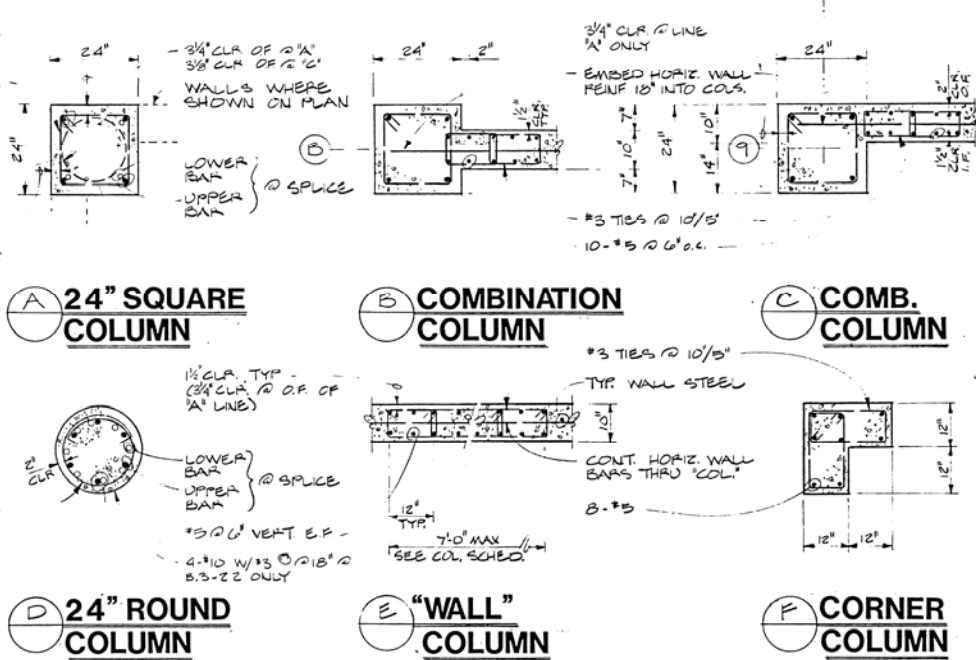
2" CLR TYP 3 SIDES
- OFFSET BEND @
1" MAX

- 2 EXTRA TIES
BUNDLED @
LOWER BEND PT

SEE SCHED

#4 TIES, LAP 17"
PLUS 90° HOOK

6-#11 BARS
SEE SCHED



COLUMN TYPES

TYPICAL COLUMN REINFORCING

COLS. AT SPANDRELS

COLS. AT EXT. WALLS

WALL COLS. AT LINE "B"

WALL COLS. AT LINE "A"

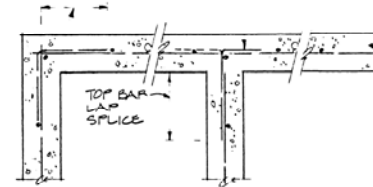
SECTION

WALL SCHEDULE

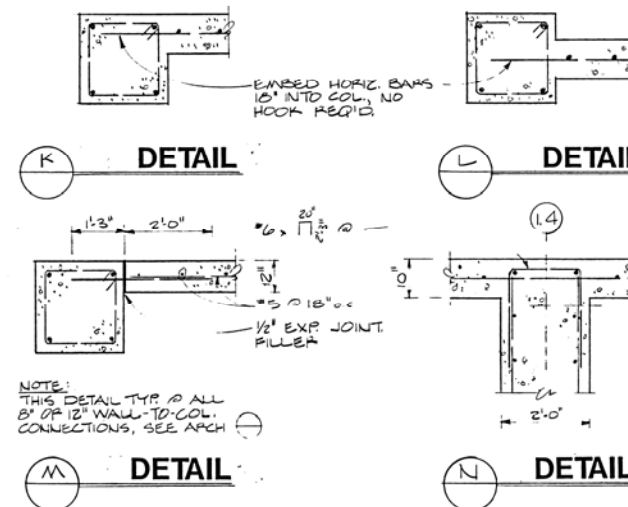
WALL THICKNESS	HORIZ. BARS	VERT. BARS	LOCATION
6"	#4 @ 12"	#4 @ 12"	E OF WALL
8"	#5 @ 12"	#5 @ 12"	E OF WALL
10"	#5 @ 12"	#5 @ 12"	E OF WALL
12"	SEE PLANS	SEE PLANS	
24"	SEE PLANS	SEE PLANS	

STD. HOOK -
VERT. OR HORIZ.

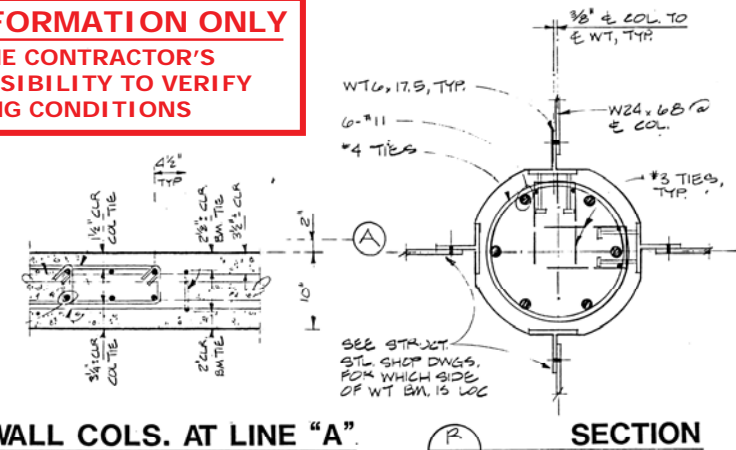
STD. HOOK
(ALT. DIRECTION)



TYPICAL SINGLE LAYER WALL DETAILS



FOR INFORMATION ONLY
IT IS THE CONTRACTOR'S
RESPONSIBILITY TO VERIFY
EXISTING CONDITIONS



SEE STAY
STL SHOP DWGS.
FOR WHICH SIDE
OF WT BM IS LOC

Kiewit Construction Company
1300 Aloha Street, Seattle, Wa. 98109
Tel. (206) 624-8333
Engineers
Victor O. Gray and Company
Architects
Clayton R. Joyce Architects

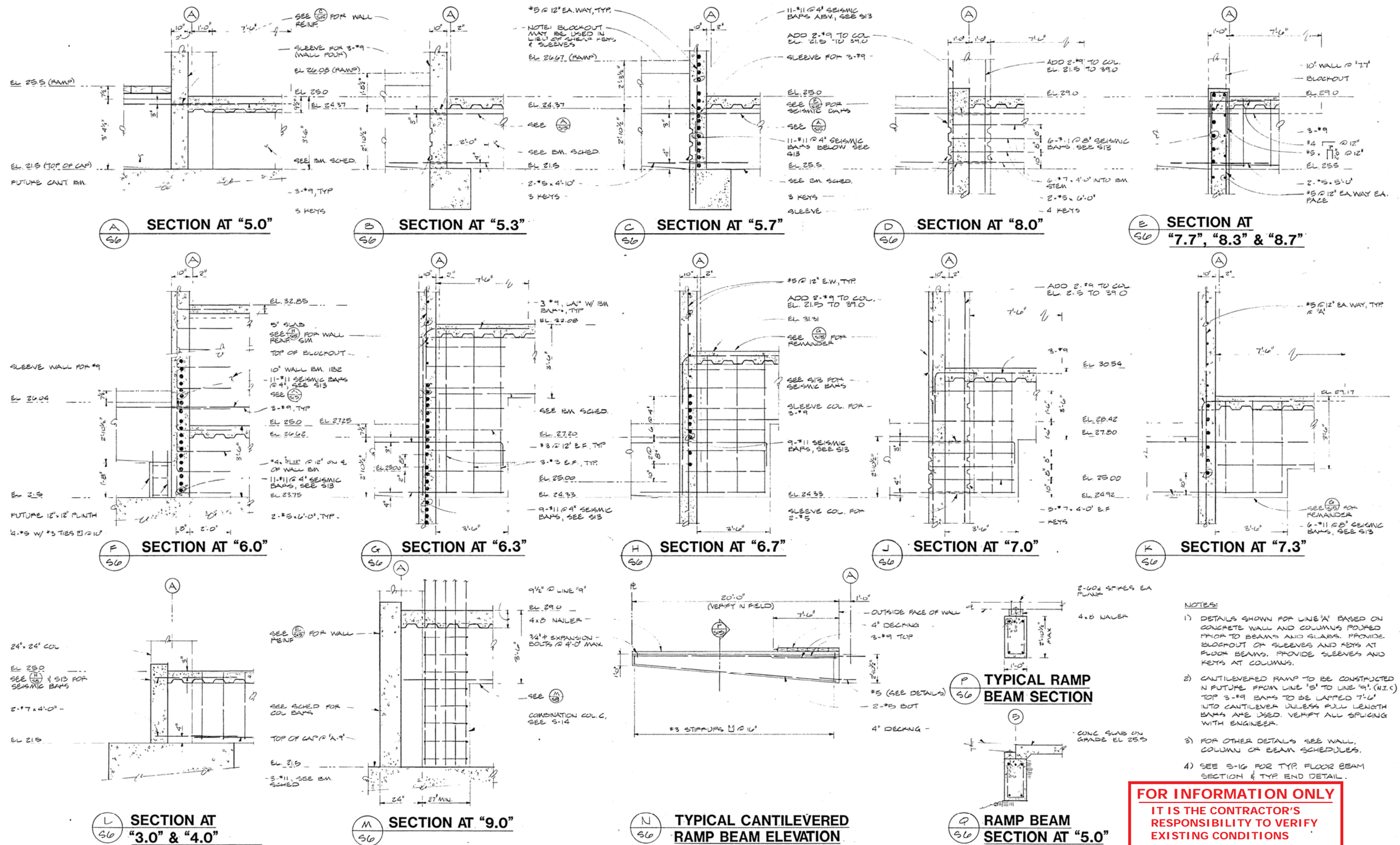
Revisions
11-84 REISSUED
3-6-85 REVISED & REISSUED

Date 8-3-84
Scale
Job No. 8204
Drawn By DDA
Checked By
Reviewed By VOG

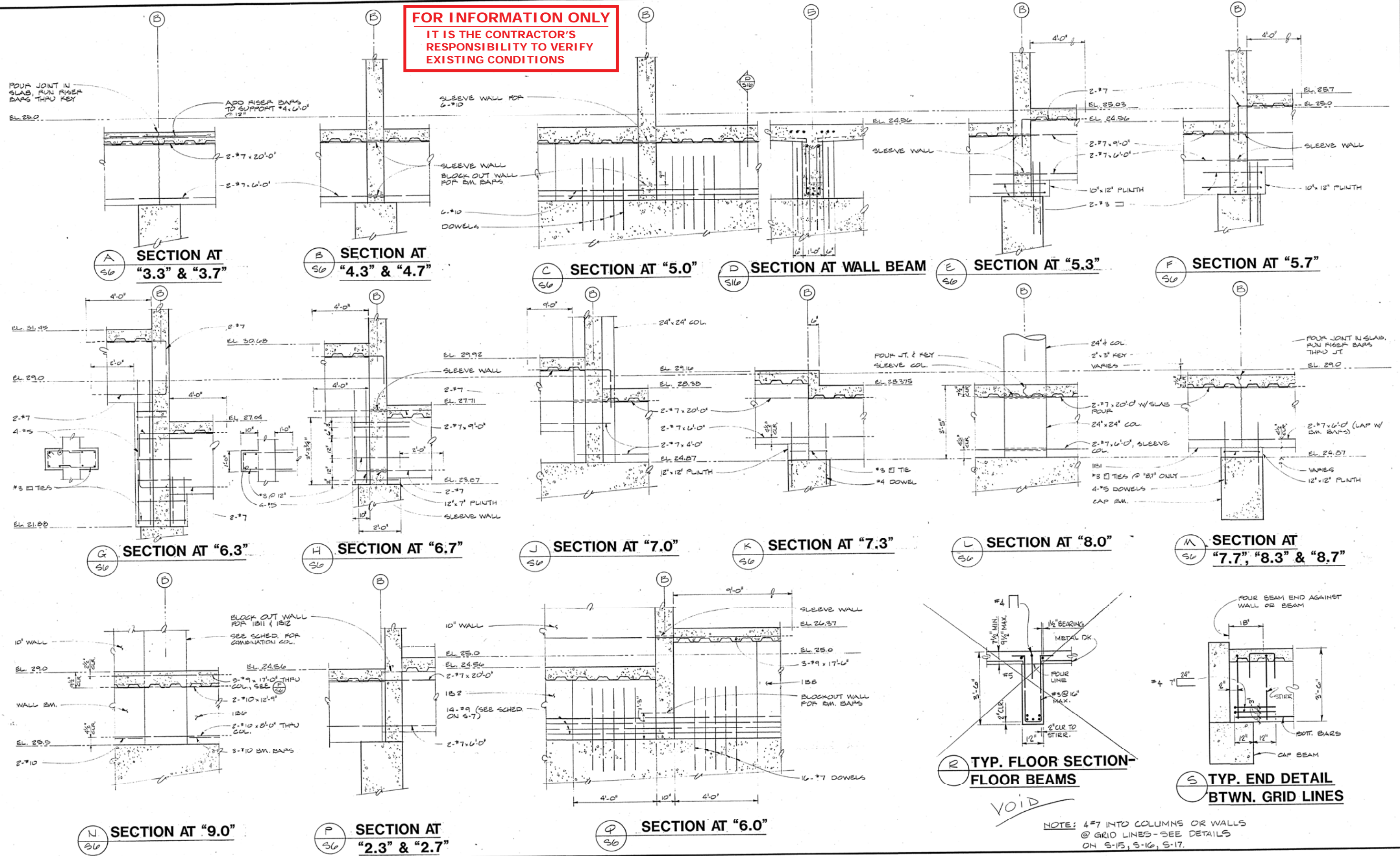
Professional Stamp



Marine Park PARKING GARAGE & PARK FACILITY
CITY/BOROUGH OF JUNEAU
COLUMN & WALL SCHEDULES & DETAILS S-14
Drawing Title
CONTRACT E84-120
Sheet Number



FOR INFORMATION ONLY
IT IS THE CONTRACTOR'S
RESPONSIBILITY TO VERIFY
EXISTING CONDITIONS



Kiewit Construction Company
1300 Aloha Street, Seattle, Wa. 98109 Tel. (206) 624-8333
Engineers
Victor O. Gray and Company
Architects
Clayton R. Joyce Architects

Revisions	11-84 REISSUED
	3-6-85 REVISED & REISSUED

Date 8.3.84
Scale
Job No. 8304
Drawn By DDA
Checked By VOG
Reviewed By



