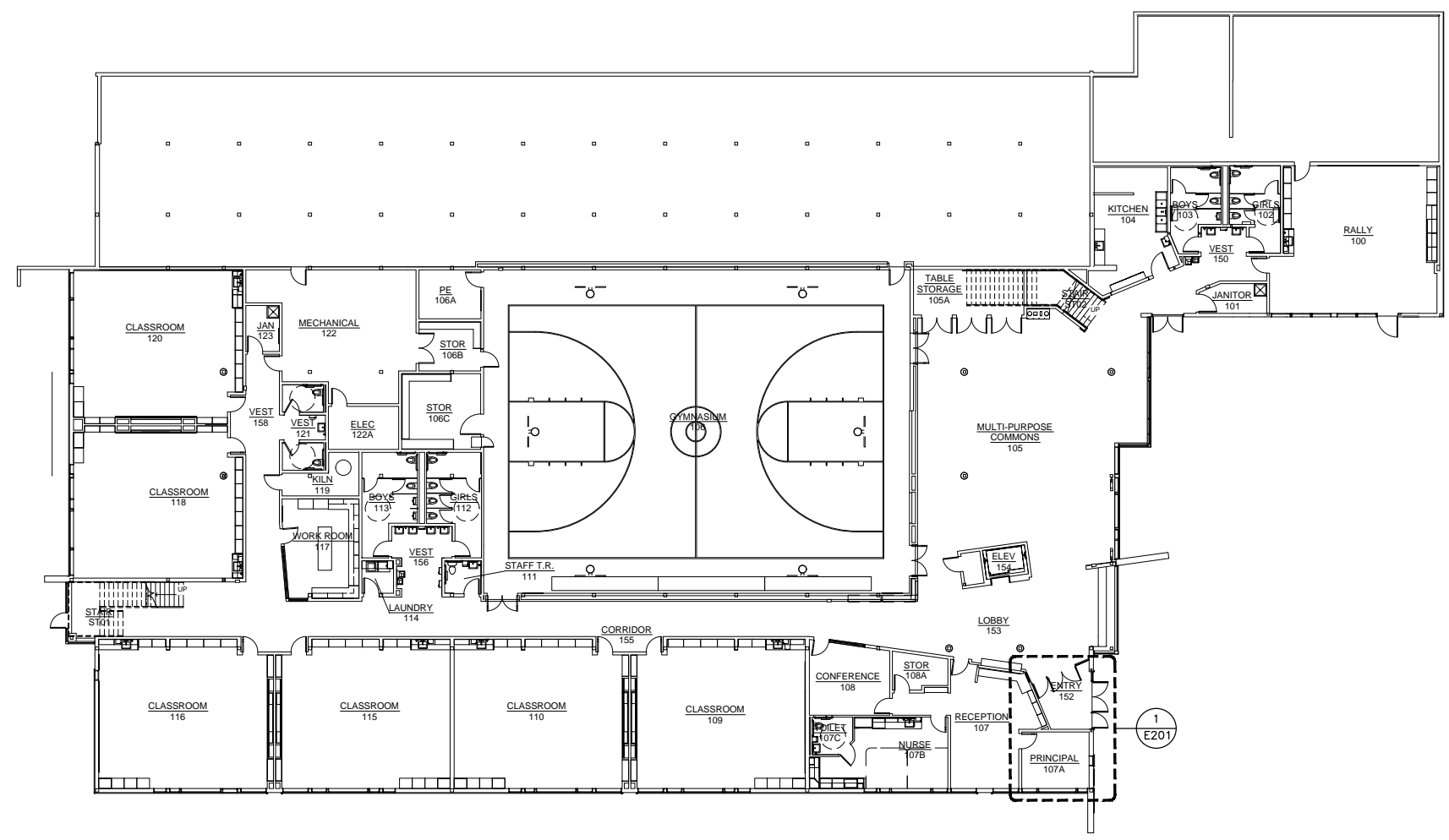


LEGEND	
SYMBOL	DESCRIPTION
	SUSPENDED LUMINAIRE, SIZE AND SHAPE VARIES.
	PUSHBUTTON STATION
	DUPLEX RECEPTACLE
	HALF SHADING INDICATES RECEPTACLE ABOVE COUNTER OR BACKSPASH, SEE ARCHITECTURAL DRAWINGS FOR HEIGHT.
	BRANCH CIRCUIT PANELBOARD
	JUNCTION BOX
	HOMERUN TO INDICATED DESTINATION
	DATA OUTLET, NUMBER INDICATES QUANTITY OF JACKS.
	SHEET NOTE REFERENCE
	DETAIL REFERENCE
(E)	EXISTING
(X)	REMOVE



**1 FIRST FLOOR KEYPLAN**  
 SCALE: 1/16"=1'-0"



**BEGENYI**  
 ENGINEERING, LLC

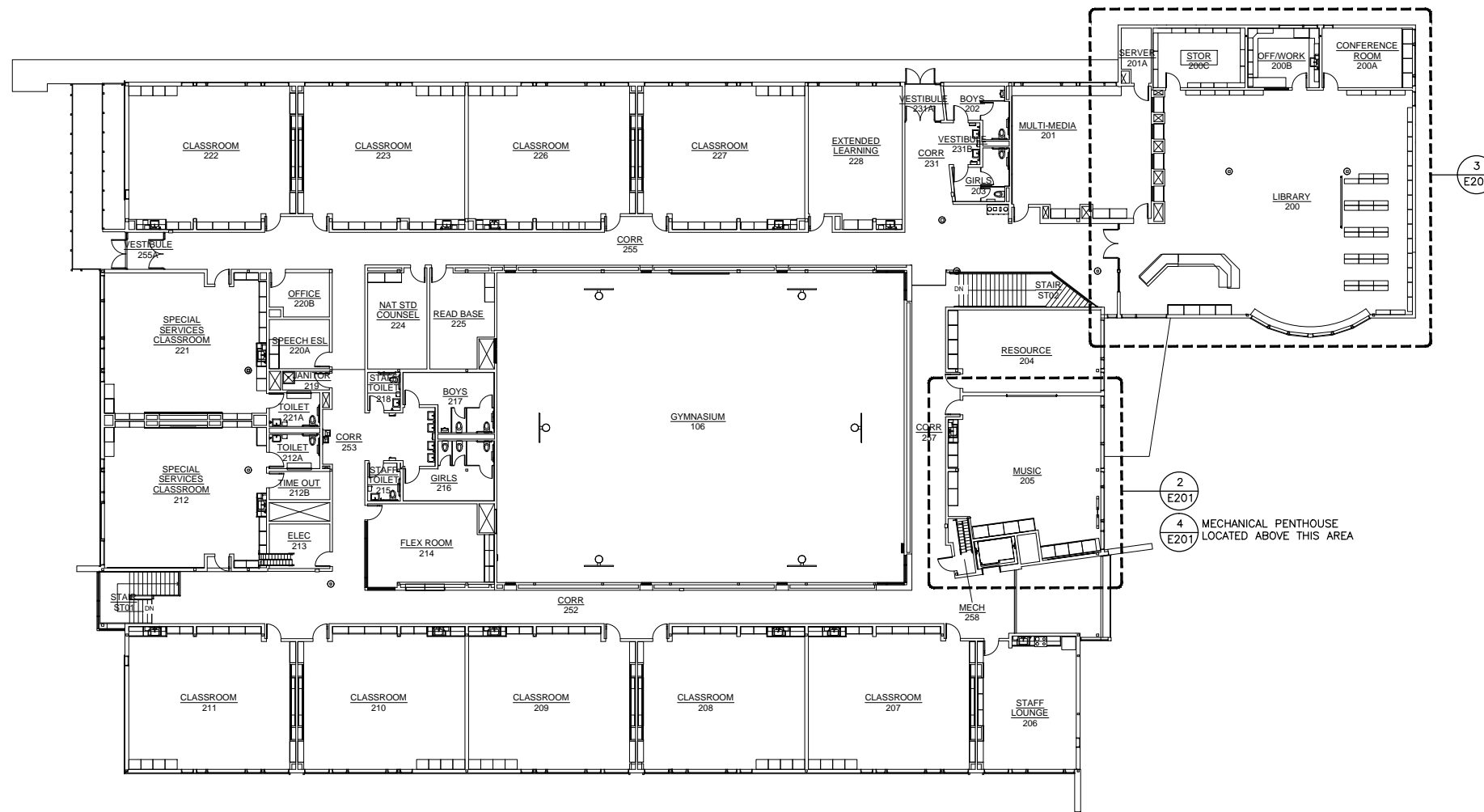
217 2nd ST, STE 208, JUNEAU, AK 99801  
 PH: (907) 586-5900 / FAX: (907) 586-5901

REVISION	DESCRIPTION	DATE

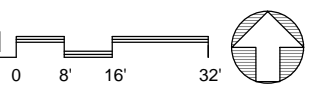
PROJECT  
**Auke Bay Elementary**  
 Projectors RFQ E15-141

SHEET TITLE  
**Legend and First Floor Keyplan**

DRAWING NUMBER	SCALE
<b>E101</b>	AS NOTED
DATE	OCT 2014



1 SECOND FLOOR KEYPLAN  
 SCALE: 1/16"=1'-0"



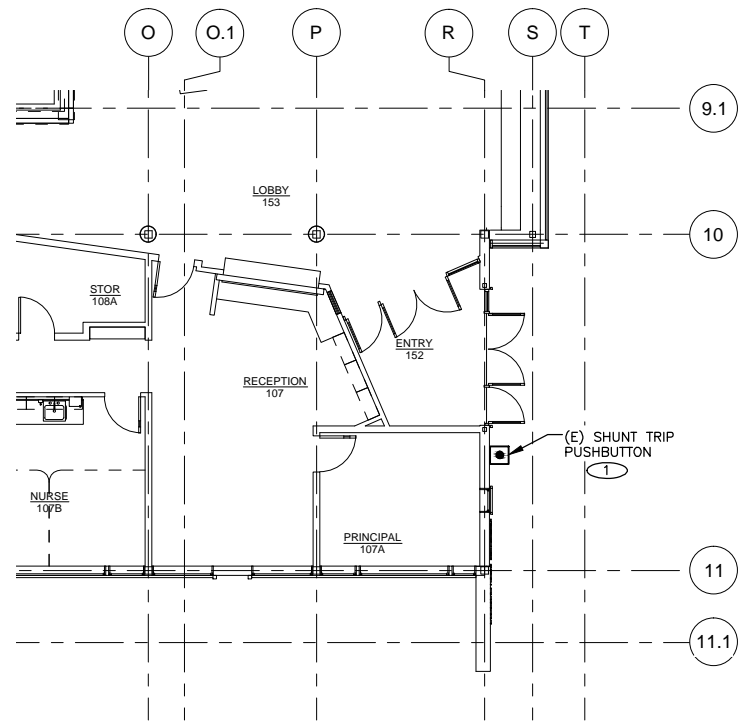
STATE OF ALASKA  
 49th  
 Barry J. Begeny  
 REGISTERED PROFESSIONAL ENGINEER  
 EE 10453  
 OCTOBER 7, 2014

**BEGENY**  
 ENGINEERING, LLC  
 217 2nd ST, STE 208, JUNEAU, AK 99801  
 PH: (907) 586-5900 / FAX: (907) 586-5901

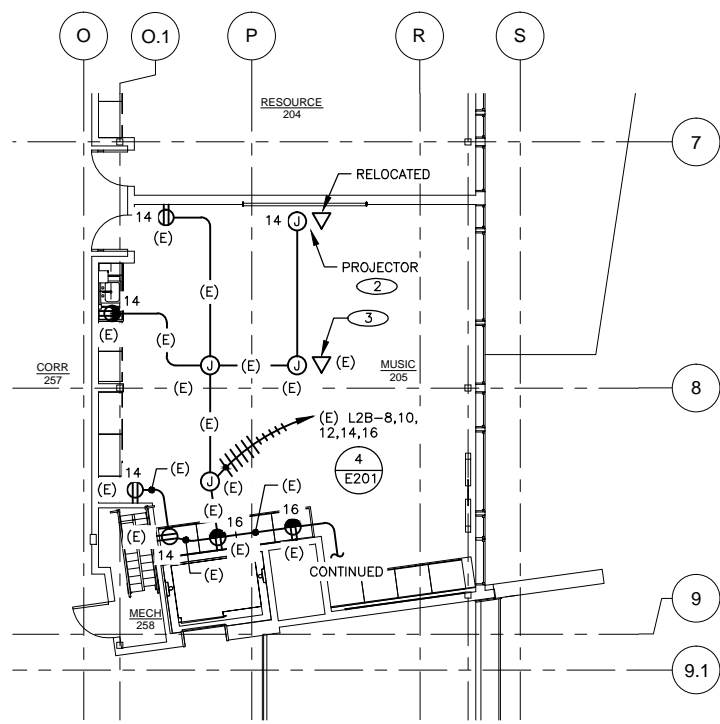
REVISION	DESCRIPTION	DATE

PROJECT  
 Auke Bay Elementary  
 Projectors RFQ E14-151  
 SHEET TITLE  
 Second Floor Keyplan

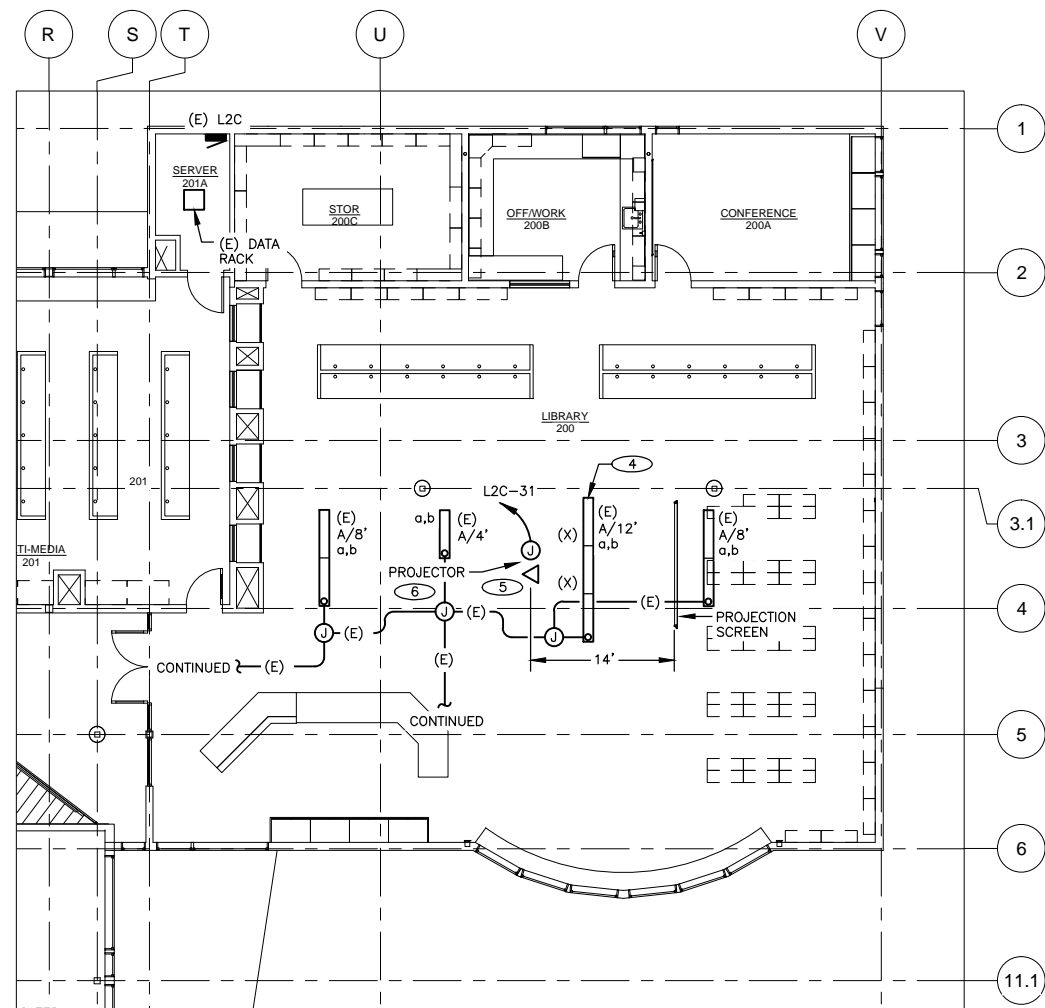
DRAWING NUMBER	SCALE
E102	AS NOTED
DATE	OCT 2014



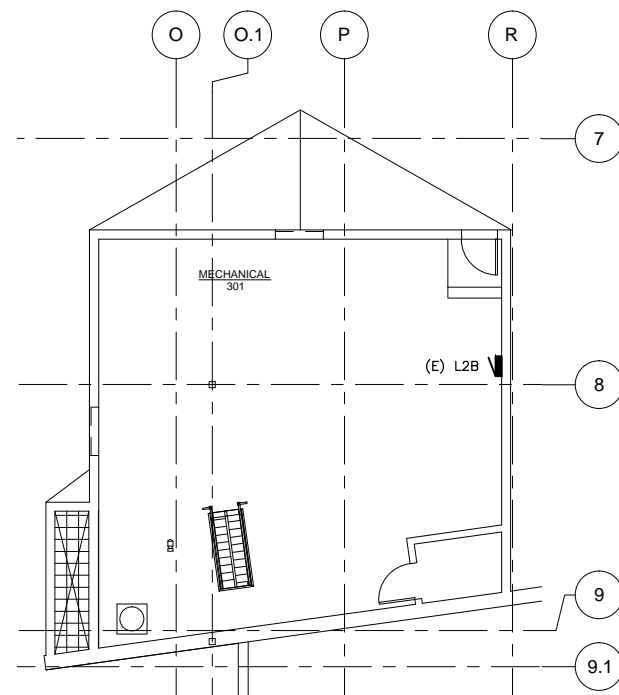
1 ENTRY 152 PLAN  
SCALE: 1/8"=1'-0"



2 MUSIC 205 PLAN  
SCALE: 1/8"=1'-0"



3 LIBRARY 200  
SCALE: 1/8"=1'-0"



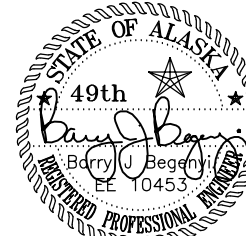
4 MECHANICAL 301 PLAN  
SCALE: 1/8"=1'-0"

NOTES:

- 1 PROVIDE NEW LOCKABLE COVER FOR SHUNT TRIP PUSHBUTTON ENCLOSURE, HOFFMAN ADF0606P, WITH LOCK KIT ACLDF. EXISTING ENCLOSURE IS HOFFMAN CATALOG NUMBER ASE6X6X6NK.
- 2 A HITACHI HITCPTW3003 PROJECTOR WILL BE PROVIDED AND INSTALLED BY THE OWNER. CONTRACTOR SHALL PROVIDE AND INSTALL A HITACHI WALL MOUNT BRACKET, CATALOG NUMBER HITASHW03, TO SUPPORT THE PROJECTOR. FOLLOW MANUFACTURER'S INSTALLATION INSTRUCTIONS.
- 3 RELOCATE EXISTING DATA CABLE TO PROJECTOR LOCATION. EXISTING DATA CABLE IS COILED ABOVE THE ACCESSIBLE CEILING.
- 4 REMOVE 8 LINEAR FEET OF EXISTING LIGHT FIXTURE. REMOVE END CAP AND RE-INSTALL ON 4-FOOT LIGHT FIXTURE TO REMAIN.
- 5 ROUTE DATA CABLE TO SERVER 201A. TERMINATE ON EXISTING PATCH PANEL. SEE DETAIL 3, E201 FOR LOCATION OF SERVER 201A.
- 6 EPSON POWERLITE 1776W PROJECTOR WILL BE PROVIDED AND INSTALLED BY THE OWNER. CONTRACTOR SHALL PROVIDE AND INSTALL AN EPSON CEILING MOUNT BRACKET, CATALOG NUMBER ELPMBPJ, TO SUPPORT THE PROJECTOR. FOLLOW MANUFACTURER'S INSTALLATION INSTRUCTIONS.

SPECIFICATIONS:

CONDUCTORS: COPPER, STRANDED, THHN-2/THWN-2.  
 HANGERS AND SUPPORTS: STEEL.  
 RACEWAYS: ELECTRICAL METALLIC TUBING.  
 BOXES: SHEET METAL OUTLET AND DEVICE BOXES, NEMA OS 1.  
 DATA CABLE: CATEGORY 6, 100-OHM, 4-PAIR UTP, THERMOPLASTIC JACKET.



OCTOBER 7, 2014



217 2nd ST, STE 208, JUNEAU, AK 99801  
 PH: (907) 586-5900 / FAX: (907) 586-5901

REVISION	DESCRIPTION	DATE

PROJECT  
 Auke Bay Elementary  
 Projectors RFQ E15-141  
 SHEET TITLE

Floor Plans

DRAWING NUMBER	SCALE
E201	AS NOTED
DATE	
OCT 2014	