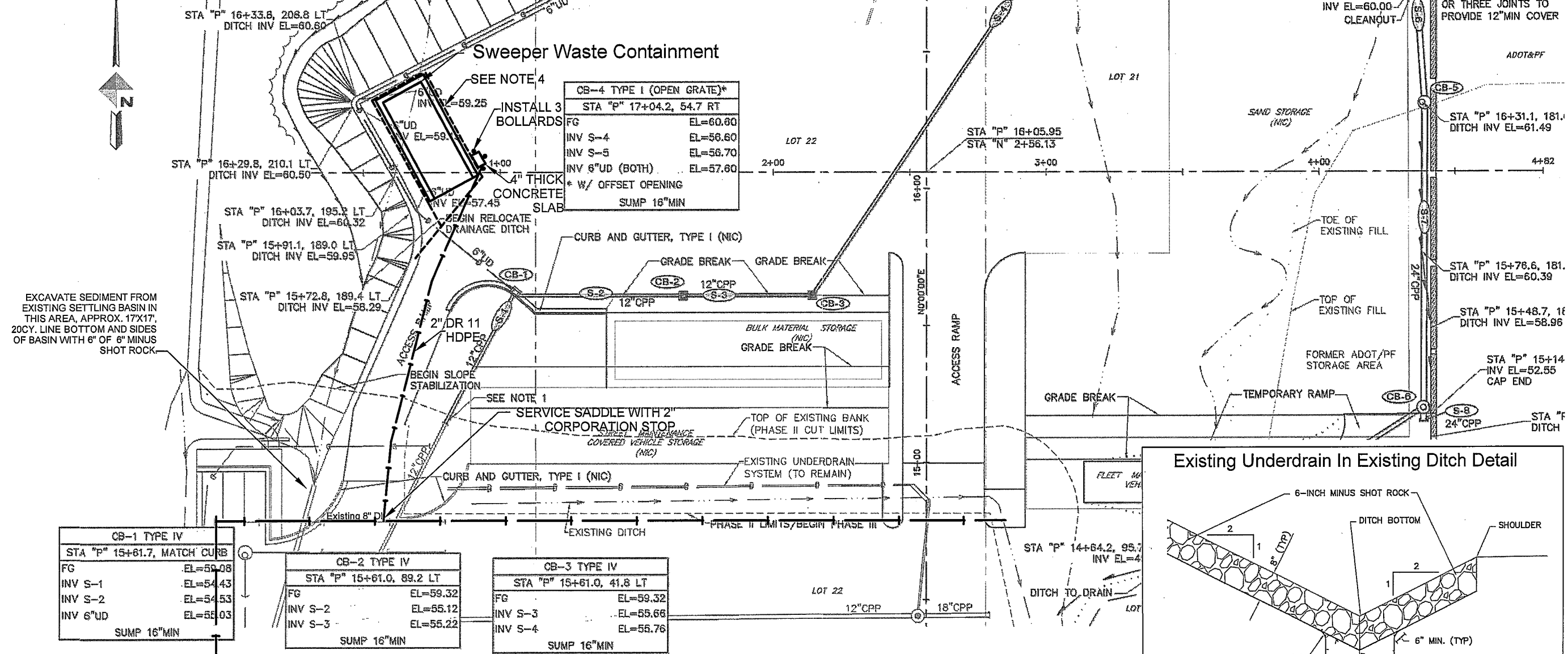


# NOTES:

1. A complete survey was not done for this project, measurements were taken from previous surveys in this area. Contractor and Owner shall verify layout in the field prior to beginning work. Minor adjustments may be required in the field.
2. Bollards shall be 4" diameter galvanized steel pipe set plumb in ground 36", filled with concrete. Top height shall be 36" from ground with rounded top. Place scotchmark red and white reflective tape around bollard at top, bottom and mid point.
3. HDPE pipe shall have heat fusion joints. Contractor shall use a continuous section of HDPE or be butt fusion certified and fuse the sections using butt fusion.
4. 4" Perforated pipe foundation drain, See Sheet 2 for detail. Daylight in existing ditch. Curb stop drain pipe shall also drain into 4" perforated pipe foundation drain.



| PIPE SUMMARY |     |     |
|--------------|-----|-----|
| PIPE         | DIA | LEN |
| S-1          | 12" | 54' |
| S-2          | 12" | 61' |
| S-3          | 12" | 47' |
| S-4          | 12" | 17' |
| S-5          | 12" | 76' |
| S-6          | 24" | 81' |
| S-7          | 24" | 11' |
| S-8          | 24" | 5'  |
| S-9          | 18" | 10' |

**SWEPPER WASTE CONTAINMENT,  
MILE 7 STREETS SHOP  
CONTRACT NO. E15-111**

CITY/BOROUGH OF JUNEAU Alaska's Capital City

Sheet Title:

Site Plan

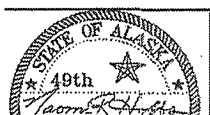
Project Manager: M.Elfers



Date:  
SEPTEMBER 29, 2014

Sheet #:

1 OF 3

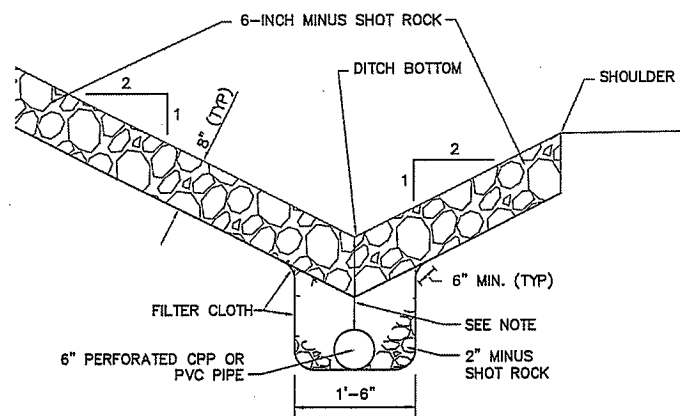


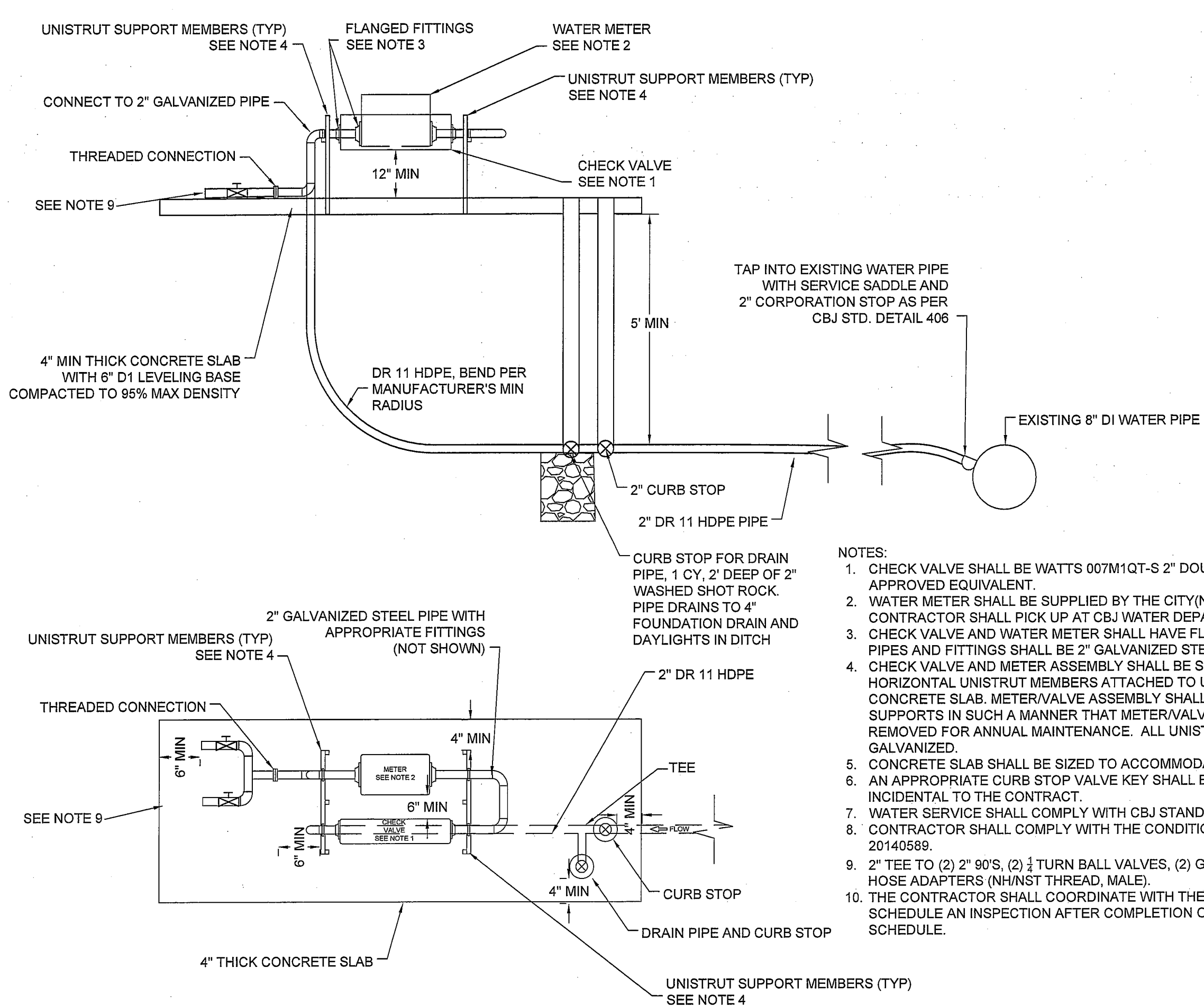
5388 Commercial Blvd.  
Juneau, Alaska 99801  
(907) 780-3533 Office  
(907) 780-3535 Fax



**CONSOLIDATED PUBLIC  
WORKS FACILITY.**

## Existing Underdrain In Existing Ditch Detail





#### NOTES:

- CHECK VALVE SHALL BE WATTS 007M1QT-S 2" DOUBLE CHECK VALVE ASSEMBLY OR APPROVED EQUIVALENT.
- WATER METER SHALL BE SUPPLIED BY THE CITY (NEPTUNE T-10 2" METER). CONTRACTOR SHALL PICK UP AT CBJ WATER DEPARTMENT.
- CHECK VALVE AND WATER METER SHALL HAVE FLANGED END FITTINGS. CONNECTING PIPES AND FITTINGS SHALL BE 2" GALVANIZED STEEL.
- CHECK VALVE AND METER ASSEMBLY SHALL BE SUPPORTED AT BOTH ENDS BY HORIZONTAL UNISTRUT MEMBERS ATTACHED TO UNISTRUT POSTS SET INTO THE CONCRETE SLAB. METER/VALVE ASSEMBLY SHALL BE SECURED TO UNISTRUT SUPPORTS IN SUCH A MANNER THAT METER/VALVE ASSEMBLY CAN BE READILY REMOVED FOR ANNUAL MAINTENANCE. ALL UNISTRUT SUPPORTS SHALL BE HOT DIP GALVANIZED.
- CONCRETE SLAB SHALL BE SIZED TO ACCOMMODATE THE CLEARANCES INDICATED.
- AN APPROPRIATE CURB STOP VALVE KEY SHALL BE SUPPLIED BY THE CONTRACTOR INCIDENTAL TO THE CONTRACT.
- WATER SERVICE SHALL COMPLY WITH CBJ STANDARD DETAIL 406.
- CONTRACTOR SHALL COMPLY WITH THE CONDITIONS OF CBJ UTILITY PERMIT BLD 20140589.
- 2" TEE TO (2) 2" 90'S, (2)  $\frac{1}{4}$  TURN BALL VALVES, (2) GALVANIZED STEEL PIPE TO 1.5" FIRE HOSE ADAPTERS (NH/NST THREAD, MALE).
- THE CONTRACTOR SHALL COORDINATE WITH THE CBJ BUILDING PERMIT DIVISION TO SCHEDULE AN INSPECTION AFTER COMPLETION OF THE WORK, CALL 586-1703 TO SCHEDULE.

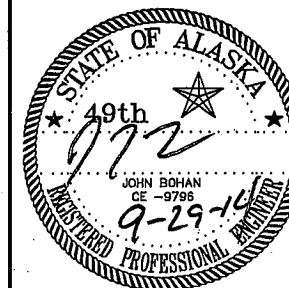
SWEPPER WASTE CONTAINMENT,  
MILE 7 STREETS SHOP  
CONTRACT NO. E15-111

CITYBOROUGH OF JUNEAU Alaska's Capital City

Sheet Title:

Water Meter Detail

Project Manager: M. Elfers



Date:  
SEPTEMBER 29, 2014

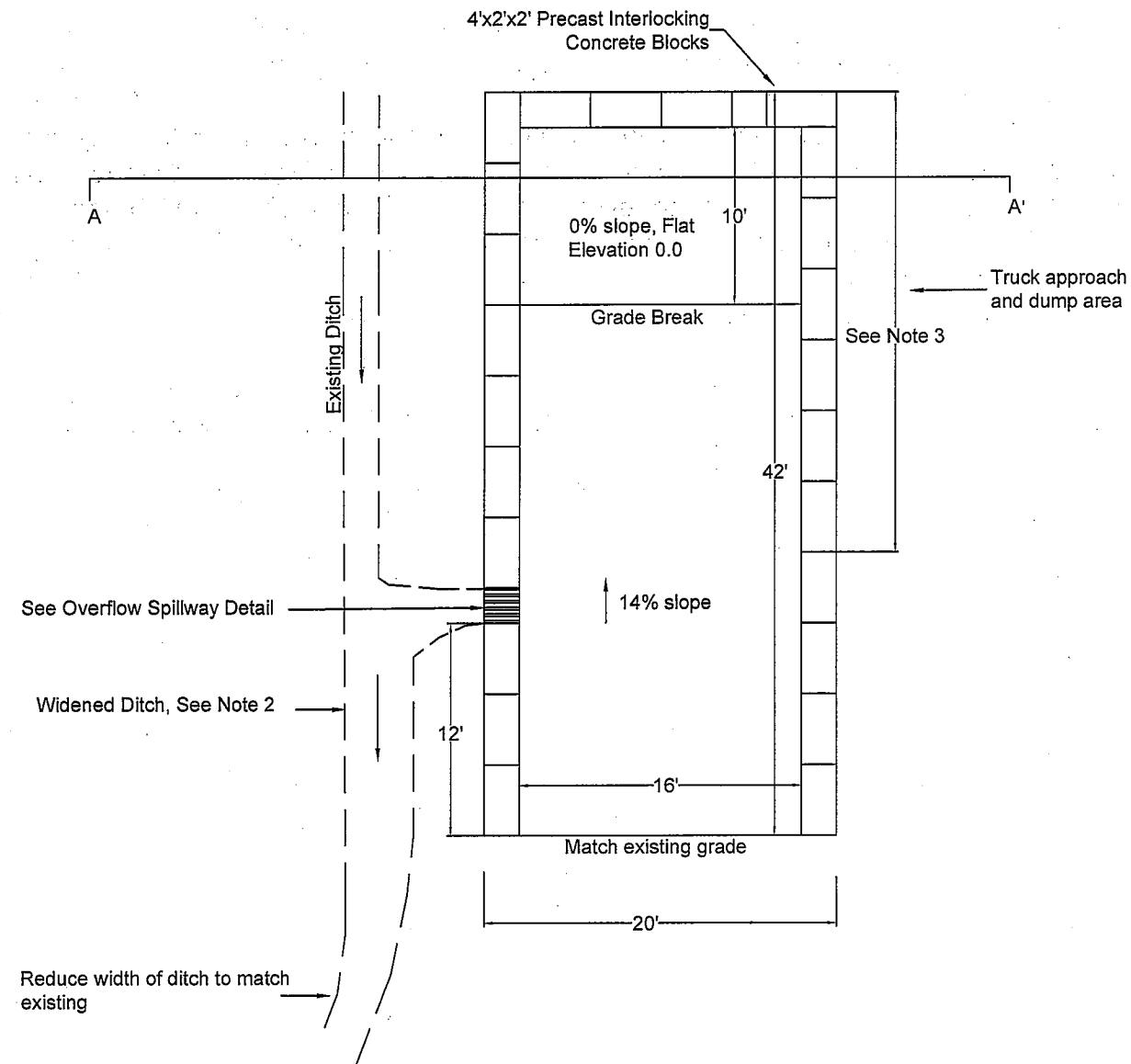
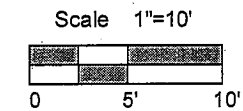
Sheet #:

3 OF 3

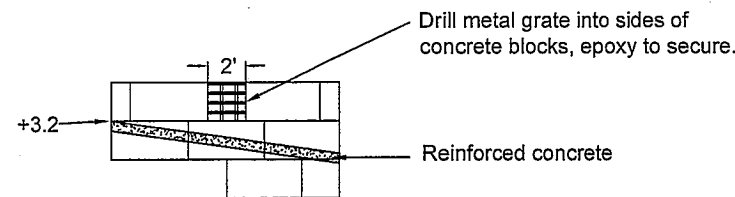
# NOTES:

1. A complete survey was not done for this project, measurements were taken from previous surveys in this area. Contractor and Owner shall verify layout in the field prior to beginning work. Minor adjustments may be required in the field.
2. Widen existing ditch to 4' and excavate as needed to maintain flow. Excavate ditch connection to spillway to allow 6" of fall from bottom of spillway to bottom of ditch. Add 6" minus shotrock to cover ditch bottoms and side slopes. A 6" perforated pipe runs under the existing ditch, see Sheet 1 for details.
3. Top elevation of blocks in this area shall be 6" - 12" above driving surface, see Section A-A'. Top elevation of blocks in other areas shall be 2"-24" above outside ground surface.
4. During construction the contractor shall employ all necessary erosion and sediment control measures to minimize sediment leaving the project area.
5. After structure is completed, remove top loops on blocks.
6. Geogrid shall be Mirafi 2XT, SRW 3 Series or approved equal.

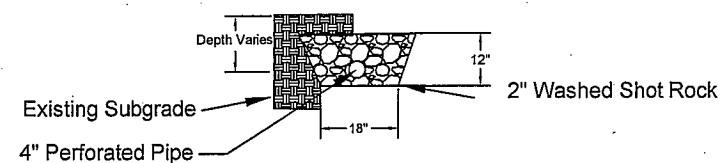
## Sweeper Waste Containment Plan



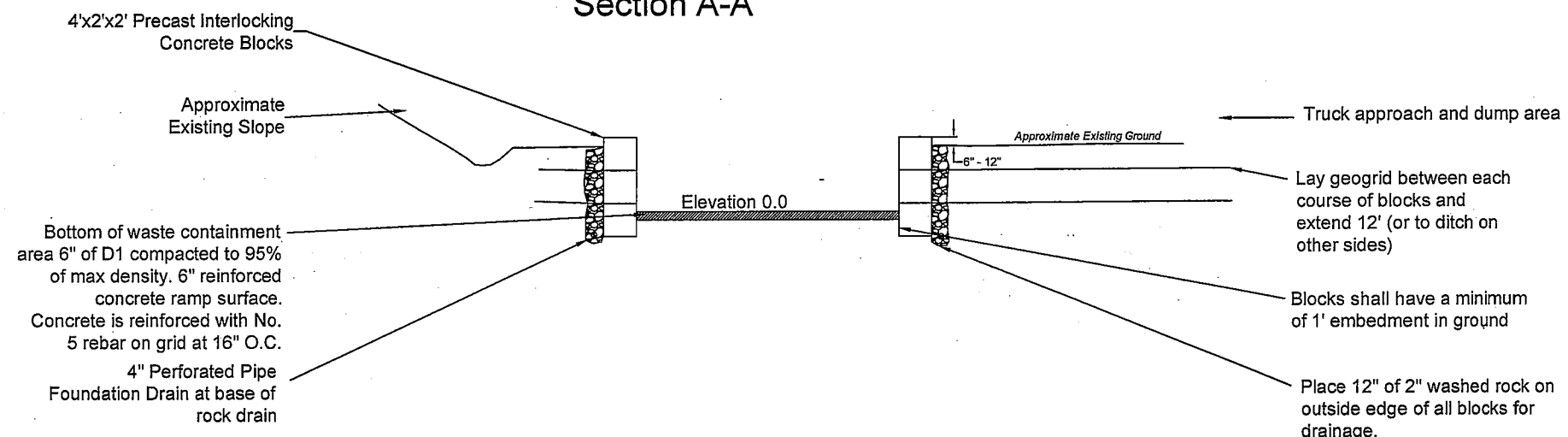
### Overflow Spillway Detail



### 4" Foundation Drain Detail



### Section A-A'



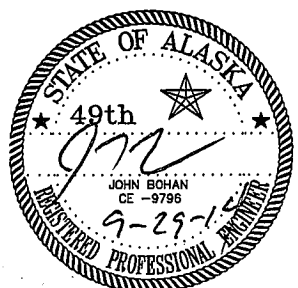
SWEPPER WASTE CONTAINMENT,  
MILE 7 STREETS SHOP  
CONTRACT NO. E15-111

CITYBOROUGH OF JUNEAU Alaska's Capital City



Sheet Title:  
Containment Detail

Project Manager: M. Elfers



Date:  
SEPTEMBER 29, 2014

Sheet #:

2 OF 3