



ADDENDUM TO THE CONTRACT

for the

**Statter Harbor Improvements
Contract No. DH14-014**

ADDENDUM NO.: FIVE

**CURRENT DEADLINE FOR BIDS:
October 14, 2014**

PREVIOUS ADDENDA: FOUR

ISSUED BY: City and Borough of Juneau
ENGINEERING DEPARTMENT
155 South Seward Street
Juneau, Alaska 99801

DATE ADDENDUM ISSUED: October 8, 2014

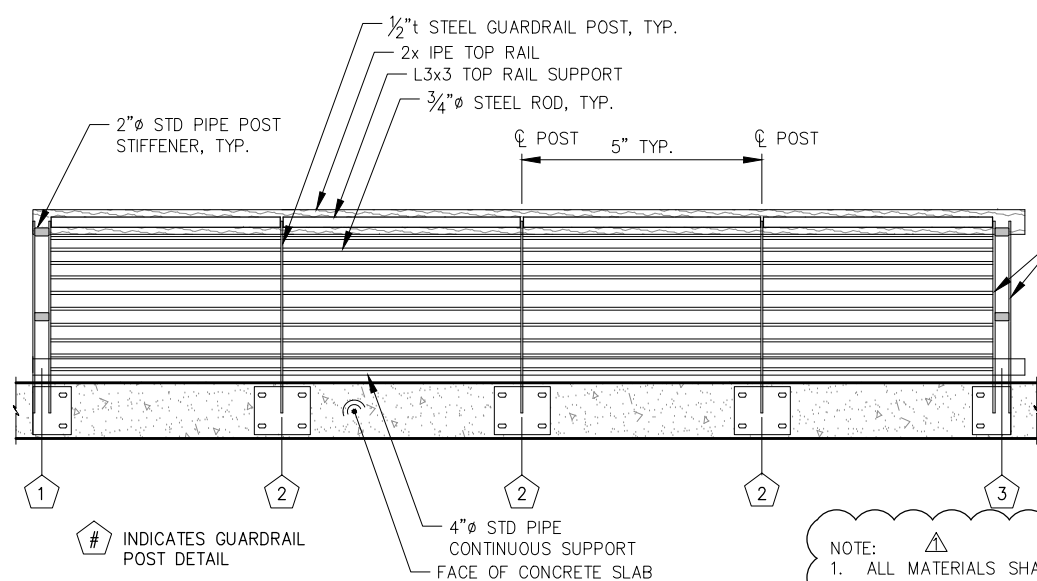
The following items of the contract are modified as herein indicated. All other items remain the same. This is a faxed addendum. A confirming copy will not be mailed to you. This addendum has been issued and is posted online. Please refer to the CBJ Engineering Contracts Division webpage at: http://www.juneau.org/engineering_ftp/contracts/Contracts.php

PLANS:

- Item No. 1 DRAWING SHEET 5.16, WATER AND WASTEWATER PLAN, **Update** WASTEWATER SYSTEM FEATURE, DESIGNATION SS3, DESCRIPTION "316 SS BLIND FLANGE, CAP & FLAG" on the drawing, at the end of the wastewater pipe in the lower right corner of the sheet **replace** SS2 with SS3, it was incorrectly identified.
- Item No. 2 DRAWING SHEET 6.04, SEAWALK SECTIONS, SEAWALK SECTION TYPE II- ALIGNMENT STA. 3+00.00, **Update** the 6'-0" dimension to read 8'-0", note that the portion of the Seawalk referenced by this dimension is 6'-0" wide with a 2'-0" wide curb and gutter.
- Item No. 3 **Replace** DRAWING SHEET 6.08, SEAWALK GUARDRAIL DETAILS, with the attached sheet, similarly titled and dated October 7, 2014.

By: 
Greg Smith
Contract Administrator

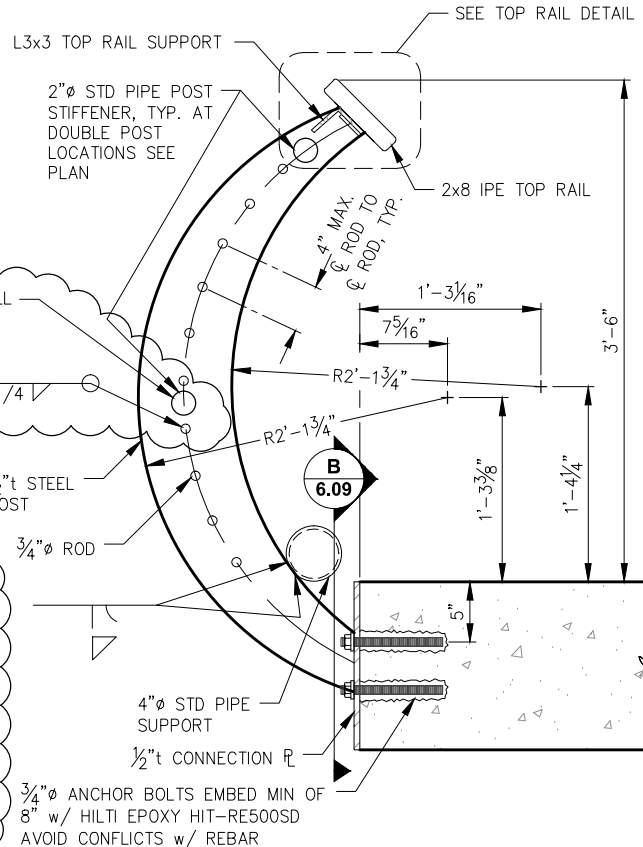
Total number of pages contained within this Addendum: 2



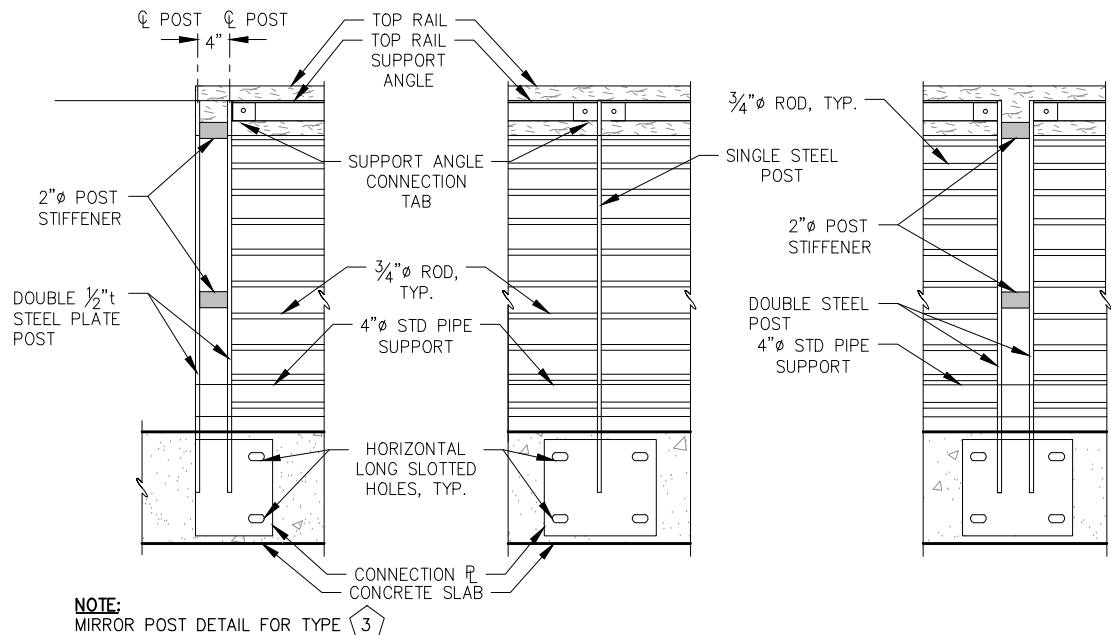
STANDARD 20' PANEL ELEVATION

NOTE:
POST CALLOUTS VARY - SEE PROFILE

- NOTE:
1. ALL MATERIALS SHALL BE HDG STEEL PROVIDED IN ACCORDANCE w/ SECTION 05120-METAL FABRICATION UNO.
 2. THE CONTRACTOR SHALL TAKE APPROPRIATE MEASURES TO SAFEGUARD AGAINST WARPAGE DURING GALVANIZING. THE MAXIMUM CLEAR DISTANCE AT ANY POINT BETWEEN RODS OR OTHER MEMBERS OF THE GUARDRAIL AFTER GALVANIZING SHALL BE 4 INCHES. ANY SECTION OF GUARDRAIL CONTAINING MEMBERS WARPED OR DISTORTED BEYOND THIS TOLERANCE SHALL BE REPAIRED OR REPLACED PER ENGINEER DIRECTION AT NO COST TO THE OWNER.



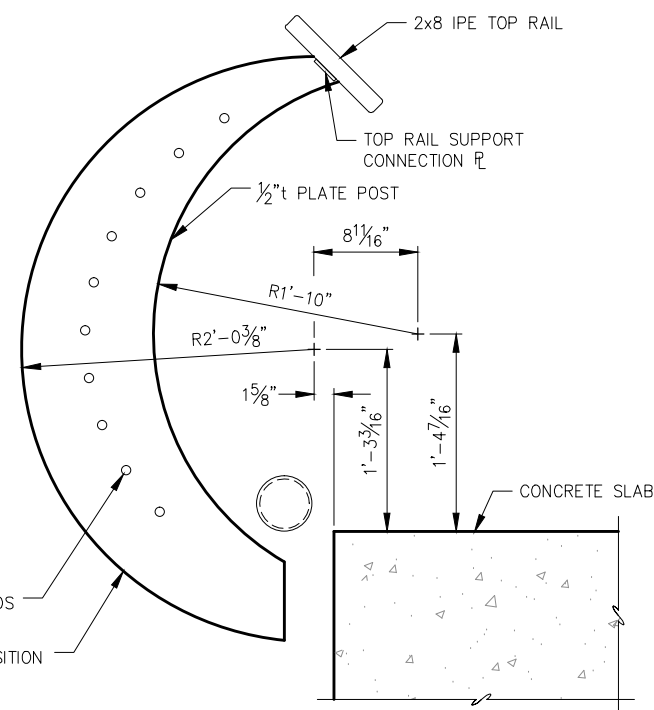
TYPICAL GUARDRAIL SECTION



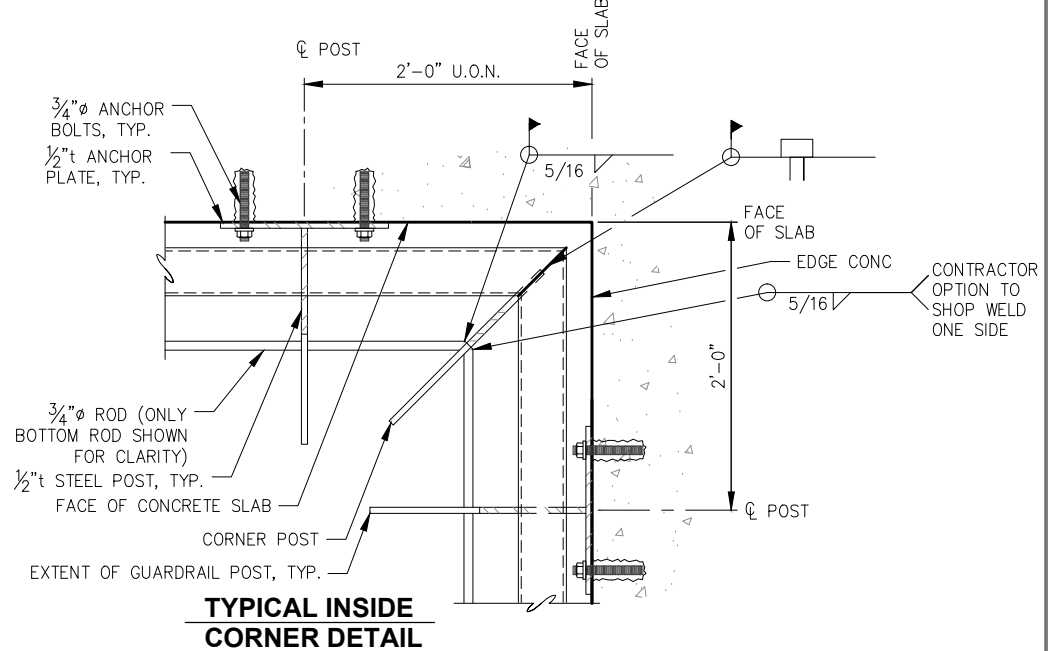
GUARDRAIL POST 1

GUARDRAIL POST 2

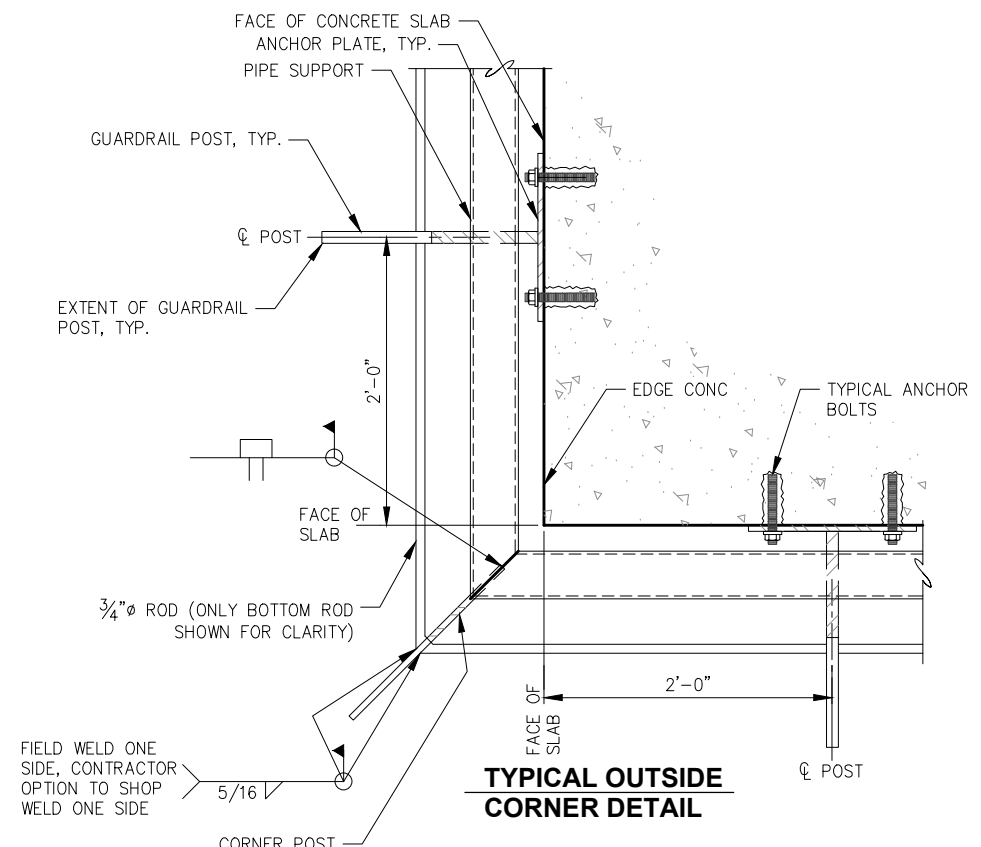
GUARDRAIL POST 3



GUARDRAIL CORNER POST SECTION



TYPICAL INSIDE CORNER DETAIL



TYPICAL OUTSIDE CORNER DETAIL



REVISIONS					
REV.	DATE	DESCRIPTION	DWN.	CKD.	APP.
1	10/7/14	WELD AND MATERIAL DETAILS	DRD	TCB	JLD

PND ENGINEERS, INC.

9360 Glacier Highway, Ste. 100
Juneau, Alaska 99801
Phone: 907-586-2093
Fax: 907-586-2099
www.pndengineers.com

DESIGN: MDS CHECKED: CRS
DRAWN: DRD APPROVED: CRS

SCALE: NTS



ADDENDUM NO. 5

CITY & BOROUGH OF JUNEAU, ALASKA
STATTER HARBOR IMPROVEMENTS
CONTRACT NO. DH14-014

SHEET TITLE:
SEAWALK GUARDRAIL DETAILS

PND PROJECT NO.: 082015

6.08
SHEET
67 OF 82