



ADDENDUM TO THE CONTRACT

for the

MUNICIPAL BUILDING PENTHOUSE SIDING & ROOF REPLACEMENT Contract No. E15-020

ADDENDUM NO.: ONE

CURRENT DEADLINE FOR BIDS:
July 31, 2014

PREVIOUS ADDENDA: NONE

ISSUED BY: City and Borough of Juneau
ENGINEERING DEPARTMENT
155 South Seward Street
Juneau, Alaska 99801

PREVIOUS DEADLINE FOR BIDS:
July 24, 2014

DATE ADDENDUM ISSUED: July 22, 2014

The following items of the contract are modified as herein indicated. All other items remain the same. This addendum has been issued and is posted online. Please refer to the CBJ Engineering Contracts Division webpage at: <http://www.juneau.org/engineering ftp/contracts/Contracts.php>

CLARIFICATIONS to BIDDERS:

Antenna General Information

- Visqueen tenting should not affect the radio signals to the antennas.
- Bringing the existing JPD-COAX cable left on interior floor of the penthouse up to code is not in the Scope of Work.

PROJECT MANUAL:

Item No. 1: SECTION 00030-NOTICE INVITING BIDS – Deadline for Bids: **Change** date of bid opening **from** July 24, 2014, **to** July 31, 2014, time and place remain the same.

Item No. 2: SECTION 00030-NOTICE INVITING BIDS, Description of Work. **Delete** the following sentence.

“Scope also includes removal, refinishing and reinstallation of four (4) existing metal air intakes, the removal and installation of existing exterior communications antennas with minimal service outage to CBJ’s IT department.”

Add the following: “Scope also includes removal, refinishing and reinstallation of two (2) existing painted metal air intakes. Two (2) existing galvanized metal air intakes on the North and East elevations are to remain unpainted. Remove and reinstall after installation of new metal siding. Remove antennas and provide temporary stand mountings to keep in service three (3) existing exterior communications antennas on the East and West elevations. Coordinate all antenna outages and related work with CBJ’s IT department.”

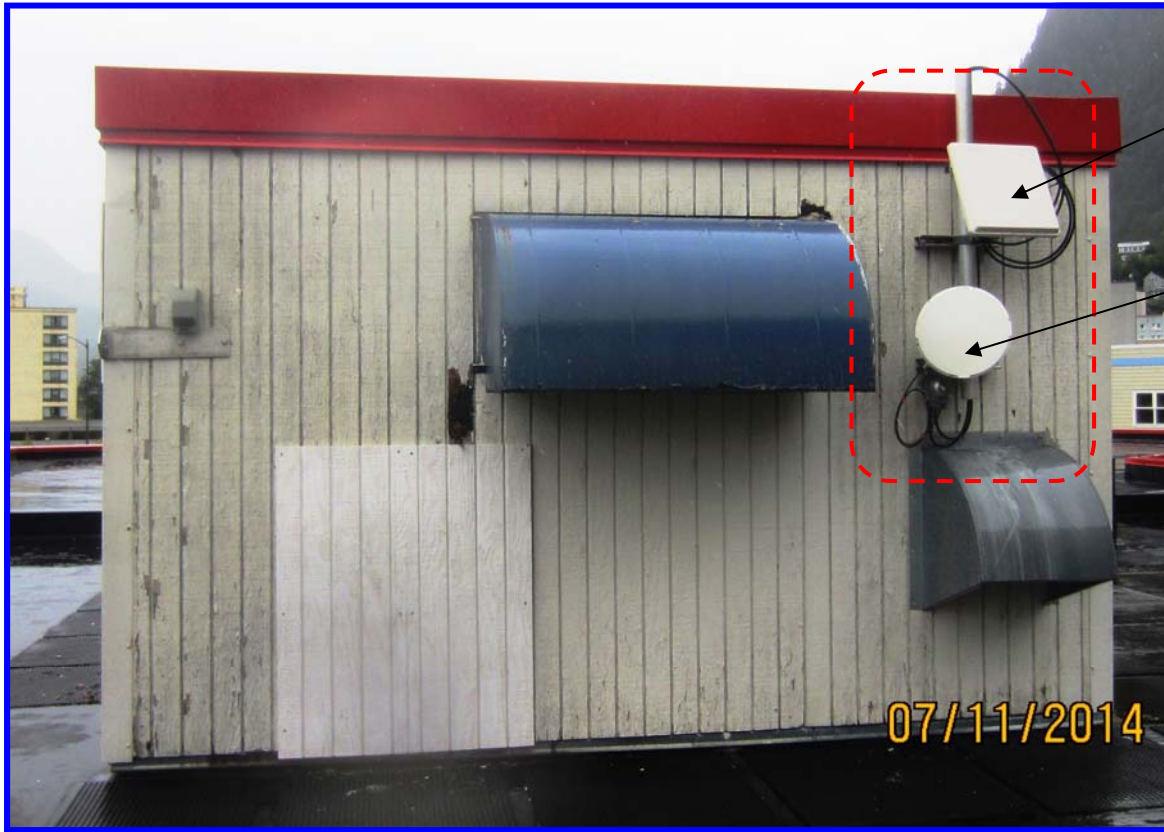
- Item No. 3: SECTION 00030-NOTICE INVITING BIDS- Completion of Work. **Change** Substantial Completion **from** "On or before October 1, 2014", **to** "On or before October 31, 2014". **Change** Final Completion **from** "On or before October 31, 2014", **to** "On or before November 14, 2014".
- Item No. 4: SECTION 00500- AGREEMENT, ARTICLE 1. WORK. **Delete** the following sentence: "Scope also includes removal, refinishing and reinstallation of four (4) existing metal air intakes, the removal and installation of existing exterior communications antennas with minimal service outage to CBJ's IT department."
- Add** the following: "Scope also includes removal, refinishing and reinstallation of two (2) existing painted metal air intakes. Two (2) existing galvanized metal air intakes on the North and East elevations are to remain unpainted. Remove and reinstall after installation of new metal siding. Remove antennas and provide temporary stand mountings to keep in service three (3) existing exterior communications antennas on the East and West elevations. Coordinate all antenna outages and related work with CBJ's IT department."
- Item No. 5: SECTION 00500-AGREEMENT, ARTICLE 2 - CONTRACT COMPLETION TIME. **Change** Substantial Completion date **from** "On or before October 1, 2014, **to** "On or before October 31, 2014." **Change** Final Completion date **from** "On or before October 31, 2014", **to** "On or before November 14, 2014".
- Item No. 6: SECTION 01010 SUMMARY OF WORK, PART 1 – GENERAL, Article 1.2 – WORK COVERED BY CONTRACT DOCUMENTS, DESCRIPTION OF WORK. **Delete** the following sentence: "Scope also includes removal, refinishing and reinstallation of four (4) existing metal air intakes, the removal and installation of existing exterior communications antennas with minimal service outage to CBJ's IT department."
- Add** the following: "Scope also includes removal, refinishing and reinstallation of two (2) existing painted metal air intakes. Two (2) existing galvanized metal air intakes on the North and East elevations are to remain unpainted. Remove and reinstall after installation of new metal siding. Remove antennas and provide temporary stand mountings to keep in service three (3) existing exterior communications antennas on the East and West elevations. Coordinate all antenna outages and related work with CBJ's IT department."

DRAWINGS:

- Item No. 7: SHEET A1 – DEMO, EXTERIOR ELEVATIONS, DEMOLITION NOTES 3. **Delete** "Clean, prime and paint all exposed metal surfaces on (E) mechanical thru-wall hoods. **Insert** "Clean, prime and paint all exposed metal surfaces on two (2) existing painted mechanical thru-wall hoods. Existing galvanized hoods to remain unpainted."
- Item No. 8: COMMUNICATIONS ANTENNA – REFERENCE PHOTOS & INFORMATION. **Add** the attached sheets with photos and clarification information.

By: 
Greg Smith,
Contract Administrator

Total number of pages contained within this Addendum: 4



Mt. Roberts Tram—CBJ Emergency Coordinator
Avalanche Data Relay antenna

Downtown Library Network, US Customs office South Cruise
Dock, Docks and Harbors visitor's information office—
priority #1. Alignment sensitive and critical to CBJ Opera-



Location of Transmitter for
library antenna on West
façade of Downtown Li-
brary building. Approxi-
mate elevation: 22'-0"

MUNI BLDG. PENTHOUSE: EAST ELEVATION:

EAST ELEVATION ANTENNAS CBJ Muni Bldg. Mechanical Penthouse

Re-aiming during/post Con-
str.

Antenna Description	Removal & Reinstall by:		Max. Allowable Outage	Priority Level	Notes:
Tram-CBJ Avalanche relay	Contractor	CBJ IT- Lisa Carson	Up to Two (2) days.	Medium #3	Can be moved up to 4' away
Photo-Right Upper (Square)				Until Snowfall	from penthouse- horizontally
					W/out major loss of signal
Dwntwn Library, Customs Ofc.	Contractor	CBJ IT- Lisa Carson	Two (2) hours max.	Highest #1	Avoid heavy cruise ship days.
		Signal strength testing by IT.			
Docks & Harbors		Certification by Contractor	Submit date and time for	CRITICAL to	Adjustment on library may
Photo-right lower (Round dish)		not required.	Owner review and approval.	Operations.	require a man-lift by Contractor.



**CENT. HALL, HARBORS OFFICE
AT SEADROME BLDG. DTC BUS
DRIVERS & JPD SQUAD ROOM**

MUNI BLDG. PENTHOUSE: WEST ELEVATION:

WEST ELEVATION ANTENNAS CBJ Muni Bldg. Mechanical Penthouse					
Antenna Description	Removal & Reinstall by:		Re-aiming during/post constr.	Max. Allowable Outage	Priority Level Notes:
JPD -Saddle Mt. Microwave	Juneau Police Dept.	Juneau Police Dept.		N/A- Not online	Lowest-#4
Photo-left					JPD assumes responsibility for this antenna.
IT-Cent Hall, Bus, Harbors Off.	Contractor	CBJ IT- Lisa Carson		Two (2) hours with prior notice and Owner approval	High #2
JPD Squad room at DTC					Can be moved up to 5' away from penthouse sides w/out major loss of signal
Photo-right				NOT between 8-5pm weekdays.	