



ABBREVIATIONS

BREAKER INTERNALS

DPS

DIGITRIP POWER SUPPLY

ST

SHUNT TRIP COIL (TRIPS BREAKER)

SR

SPRING RELEASE (CLOSES BREAKER)

MOT

MOTOR (CHARGES SPRNG)

SEN

SENSOR (FAULT DETECTOR)

AMPT

AMPECTOR (TRIP UNIT TYPE)

MOT

MOTOR (CHARGES SPRNG)

PWR

POWER RELAY MODULE

NMC

NO MANUAL CLOSE

UV

UNDERVOLTAGE RELEASE

OC

OPERATIONS COUNTER

RESET

RESET COIL FOR OTS SWITCH

GENERAL

ACB

AIR CIRCUIT BREAKER

AEM

ASSEMBLIES ELECTRONIC MONITOR

AS

AMMETER SWITCH

AM

AMMETER

AMR

AMMETER RELAY

BA

BELL ALARM CONTACT

BBD

BENCH BOARD, PANEL NO.

CKT

CIRCUIT

CS

CONTROL SWITCH

CS-C

CONTROL SWITCH, CLOSE

CS-T

CONTROL SWITCH, CLOSE

CPT

CONTROL POWER TRANSFORMER

CT

CURRENT TRANSFORMER

GEN

GENERATOR

GPR

GENERATOR PROTECTION RELAY

GFR

GROUND FAULT RELAY

GFREC

GROUND FAULT RECEPTACLE

GL

GROUND LUG

GND

GROUND

HRG

HIGH RESISTANCE GROUNDED

HRGN

HIGH RESISTANCE GROUNDED NEUTRAL

IMPACC

INTEGRATED MONITORING PROTECTION AND CONTROL COMMUNICATIONS

IQ

IQ DATA METERING SYSTEM

IQDP

IQ DP 4000 METERING SYSTEM

MINT

MASTER INCOM NETWORK TRANSULATOR

N.C.

NORMALLY CLOSED

N.O.

NORMALLY OPEN

PF

POWER FACTOR METER

PNL

PANEL OR PANELBOARD NO.

PONI

PRODUCT OPERATED NETWORK INTERFACE

REM

REMOTE

SB

BATTERY, SWITCHBOARD

SC

MAIN CONTROL SWITCHBOARD

SE

SERVICE ENTRANCE

SPD

SURGE PROTECTION DEVICE

TS

TEST SWITCH

TSF

TIME STAMP FILTER

UL

UNDERWRITERS LABORATORY

VAR

VARMETER

VHM

VAR HOUR METER

VHDM

VAR HOUR DEMAND METER

VM

VOLTMETER

VMR

VOLTMETER RELAY

VS

VOLTMETER SWITCH

VT

VOLTAGE TRANSFORMER

WHM

WATTHOUR METER

WHDM

WATTHOUR DEMAND METER

XDR

TRANSDUCER

XFMR

TRANSFORMER

DEVICE IDENTIFICATION

DEVICE ID

SCHEME

DEVICE

SYMBOL

CB24

1

2

WIRING

DEVICE

SYMBOL

1

0

2

CB24

DEVICE ID

DEVICE ID

FAMILY PREFIX

CB24

DEVICE ID

INCREMENTAL SUFFIX

(MAY BE ALPHA-NUMERIC)

DEVICE ID FAMILY PREFIX DEFINITION

ATX

AUTOTRANSFORMER

BUS

BUS

C

CONTACTOR

CAP

CAPACITOR – POWER

CB

BREAKER

COM

COMMUNICATION

CPT

CPT

CR

RELAY

CT

CURRENT TRANSFORMER

CTD

CAPACITOR TRIP DEVICE

D

DIODE

DS

SWITCH – DISCONNECT

FAN

FUSE – POWER

FU

FUSE AND FUSE BLOCK & HOLDER

GFR

GROUND FAULT OPTION

GRD

GROUND BUS

GRF

GROUND FAULT RELAY AND MONITOR

GRS

GROUND FAULT SENSOR

HTR

HEATER

JMP

JUMPER

K

KEY INTERLOCK

LOR

RELAY – LOCKOUT

LS

SWITCH, LIMIT

LT

LIGHT

MS

STARTER

MT

METER

OL

OVERLOAD RELAY

PB

PUSHBUTTON

PDB

POWER DIST BLOCK

PLC

PLC

PR

RELAY – PROTECTIVE

PS

POWER SUPPLY/CONVERTERS/CONDITIONING

PT

POTENTIAL TRANSFORMER

REC

RECEPTACLE

RES

RESISTOR – POWER

SS

SWITCH, SELECTOR

SU

SURGE SUPPRESSOR

TB

TERMINAL BLOCK

TERM

TERMINAL

TR

RELAY – TIMING

TS

SWITCH, TEST

TS

THERMOSTAT

TX

DISTRIBUTION TRANSFORMER

XD

TRANSDUCER

ANSI/IEEE DEVICE FUNCTION NUMBER LEGEND

FUNCT #

DESCRIPTION

1

MASTER CONTROL DEVICE

2

TIME DELAY STARTING OR CLOSING RELAY

4

MASTER CONTACTOR

5

SHUTDOWN DEVICE

6

STARTING CIRCUIT BREAKER

8

CONTROL POWER DISCONNECTING DEVICE

11

MULTI-FUNCTION DEVICE

13

SYNCHRONOUS-SPEED DEVICE

15

SPEED OR FREQUENCY MATCHING DEVICE

16

DATA COMMUNICATIONS DEVICE

19

STARTING-TO-RUNNING TRANSITION CONTACTOR

21

DISTANCE RELAY

23

TEMPERATURE CONTROL DEVICE

25

SYNCHRONISM CHECK DEVICE

26

APPARATUS THERMAL DEVICE

27

UNDERVOLTAGE RELAY

30

ANNUNCIATOR RELAY

32

DIRECTIONAL POWER RELAY

33

POSITION SWITCH

37

UNDERCURRENT OR UNDERPOWER RELAY

38

BEARING PROTECTIVE DEVICE

40

FIELD RELAY

41

FIELD CIRCUIT BREAKER

43

MANUAL TRANSFER SWITCH

46

REVERSE PHASE BALANCE CURRENT RELAY

47

PHASE SEQUENCE VOLTAGE RELAY

48

INCOMPLETE SEQUENCE RELAY

49

MACHINE OR TRANSFORMER THERMAL RELAY

50

INSTANTANEOUS OVERCURRENT REALY

51

AC TIME OVERCURRENT RELAY

52

AC CIRCUIT BREAKER

53

EXCITER OR DC GENERATOR RELAY

55

POWER FACTOR RELAY

56

FIELD APPLICATION RELAY

59

OVERVOLTAGE RELAY

60

VOLTAGE BALANCE RELAY

61

CURRENT BALANCE RELAY

62

TIME DELAY STOPPING OR OPENING RELAY

63

PRESSURE SENSING DEVICE

64

GROUND DETECTOR RELAY

67

AC DIRECTIONAL OVERCURRENT RELAY

69

PERMISSIVE CONTROL DEVICE

74

ALARM RELAY

78

PHASE-ANGLE MEASURING OR OUT-OF-STEP PROTECTIVE RELAY

81

FREQUENCY RELAY

83

AUTOMATIC SELECTIVE CONTROL OR TRANSFER RELAY

85

CARRIER OR PILOT-WIRE RECEIVER RELAY

86

LOCKOUT RELAY

87

DIFFERENTIAL PROTECTIVE RELAY

90

REGULATING DEVICE

94

TRIPPING OR TRIP-FREE RELAY

16S

COMMUNCATIONS DEVICE, SERIAL

16E

COMMUNICATIONS DEVICE, ETHERNET

47N

NEGATIVE SEQUENCE VOLTAGE

47/27

PHASE-SEQUENCE UNDERVOLTAGE RELAY

50G

INSTANTANEOUS OVERCURRENT, GROUND

50/51

INSTANTANEOUS & TIMED OVERCURRENT

51G

TIMED OVERCURRENT, GROUND

51N

TIMED OVERCURRENT, NEUTRAL

51V

TIMED OVERCURRENT W/VOLTAGE RESTRAINT

52MOC

BREAKER MECHANISM OPERATED CONTACT

52TOC

BREAKER, TRUCK-OPERATED CONTACT

810

OVER-FREQUENCY

81U

UNDER-FREQUENCY

87B

DIFFERENTIAL, BUS

87G

DIFFERENTIAL, GENERATOR

87L

DIFFERENTIAL, LINE

87M

DIFFERENTIAL, MOTOR

87T

DIFFERENTIAL, TRANSFORMER

AUXILIARY CONTACT LETTER DESIGNATIONS

LETTER

DESCRIPTION

a

OPEN CONTACT WHEN DEVICE IS IN THE NONOPERATED OR DE-ENERGIZED STATE.

b

CLOSED CONTACT WHEN DEVICE IS IN THE NONOPERATED OR DE-ENERGIZED STATE.

NEMA / IEEE CONFORMANCE STATEMENT PERTAINING TO GRAPHIC SYMBOLS FOR ELECTRICAL DRAWINGS:

IT IS EATON'S PRACTICE TO CONFORM TO STANDARDS ESTABLISHED BY THE NATIONAL ELECTRICAL MANUFACTURER'S ASSOCIATION (NEMA). IF NEMA DOESN'T HAVE A PARTICULAR SYMBOL OR IF IT IS NOT SHOWN IN THE THIS DOCUMENTATION, REFER TO THE AMERICAN NATIONAL STANDARDS (ANSI Y32.2, IEEE STD 315).

NONSTANDARD SYMBOLS

OR

OR

SURGE ARRESTER (SA)

LIGHTNING ARRESTOR (LA)

2 – POSITION SELECTOR SWITCH OR TRANSFER SWITCH

NEUTRAL SENSOR

CONNECTION TO GROUND BUS

CONDUIT EXPOSED OR BUS (PLANS, DETAILS, ELEVATIONS)

CABLE EXPOSED (PLANS, DETAILS, ELEVATIONS)

TB

TEST BLOCK

AS

AMMETER SWITCH

VS

VOLTMETER SWITCH

SP

SPARE WIRE(S)

WIRE CONNECTED

WIRE CROSSING (NOT CONNECTED)

NEUTRAL DISCONNECT LINK

NEUTRAL TO GROUND CONNECTION

NEUTRAL SENSOR

POLARITY MARK

TERMINAL(S)

TRANSFORMER GROUND STRAP

TRANSFORMER BONDING JUMPER

METER

HEATER / RESISTOR

ISOLATED GROUND BUS

SYNCHRONIZING LAMPS

GROUND FAULT ZERO SEQUENCE CURRENT MONITOR

SWITCH DEVELOPMENT CHART

43

TRANSFER MODE SELECTOR

AUTO

MAN

OFF

AUTO

MAN

CS

BREAKER CONTROL SWITCH

TRIP

CLOSE

TOP

BTM

X

X

FRONT VIEW

OFF

TRIP

CLOSE

WIRE REFERENCE TAG ID

WIRE SIZE DEFINITIONS

WIRE COLOR DEFINITIONS

TERMINAL OPTIONS

FORMAT: WIRE NAME ( DESTINATION ) OPTIONS

1

3

1-X(C1)/14RD-RT

1-XX(C1)/14RD-RT

1-XX(CB18)/14RD-RT

SINGLE WIRE CONNECTION

DOUBLE WIRE CONNECTION

WIRE NAME

DESTINATION: CB18 = DEVICE IDENTIFICATION

OPTIONS: 14 = WIRE SIZE RD = WIRE COLOR RT = RING TERMINAL

CABLE TYPE

C5e = CAT5e STP

FO = FIBER OPTIC

PC = POWER CORD

RB = RIBBON

RS232 = RS-232

STP = SHIELDED TWISTED PAIR (RS-485)

UTP = UNSHIELDED TWISTED PAIR

LEGEND

DFTR

DAVE DICKASON

DATE

2/27/2014

APPD

DAVE DICKASON

DATE

2/27/2014

PRODUCT CODE

3678

S.O.

NA

TYPE

SWITCHBOARDS

LEGEND

G.O.

AXG11001G201-0000

DWG

SUBMITTAL-E

SHEET

001

THE INFORMATION ON THIS DOCUMENT WAS CREATED BY EATON CORPORATION. IT WAS DISCLOSED IN CONFIDENCE AND IS ONLY TO BE USED FOR THE PURPOSE IN WHICH IT WAS SUPPLIED.

EATON

8

7

6

5

4

3

2

1

8

7

6

5

4

3

2

1

COEFIDL\_R6





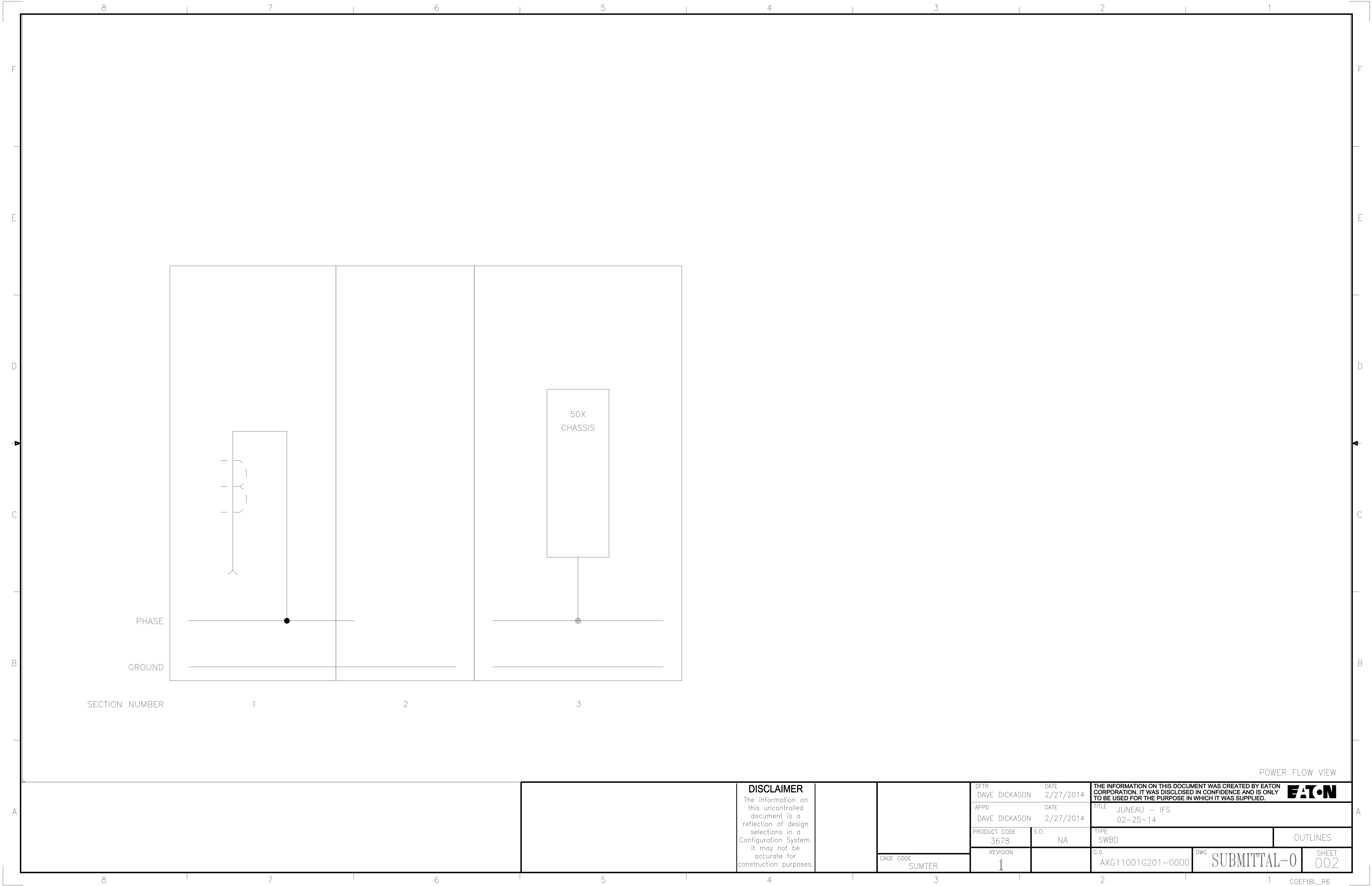
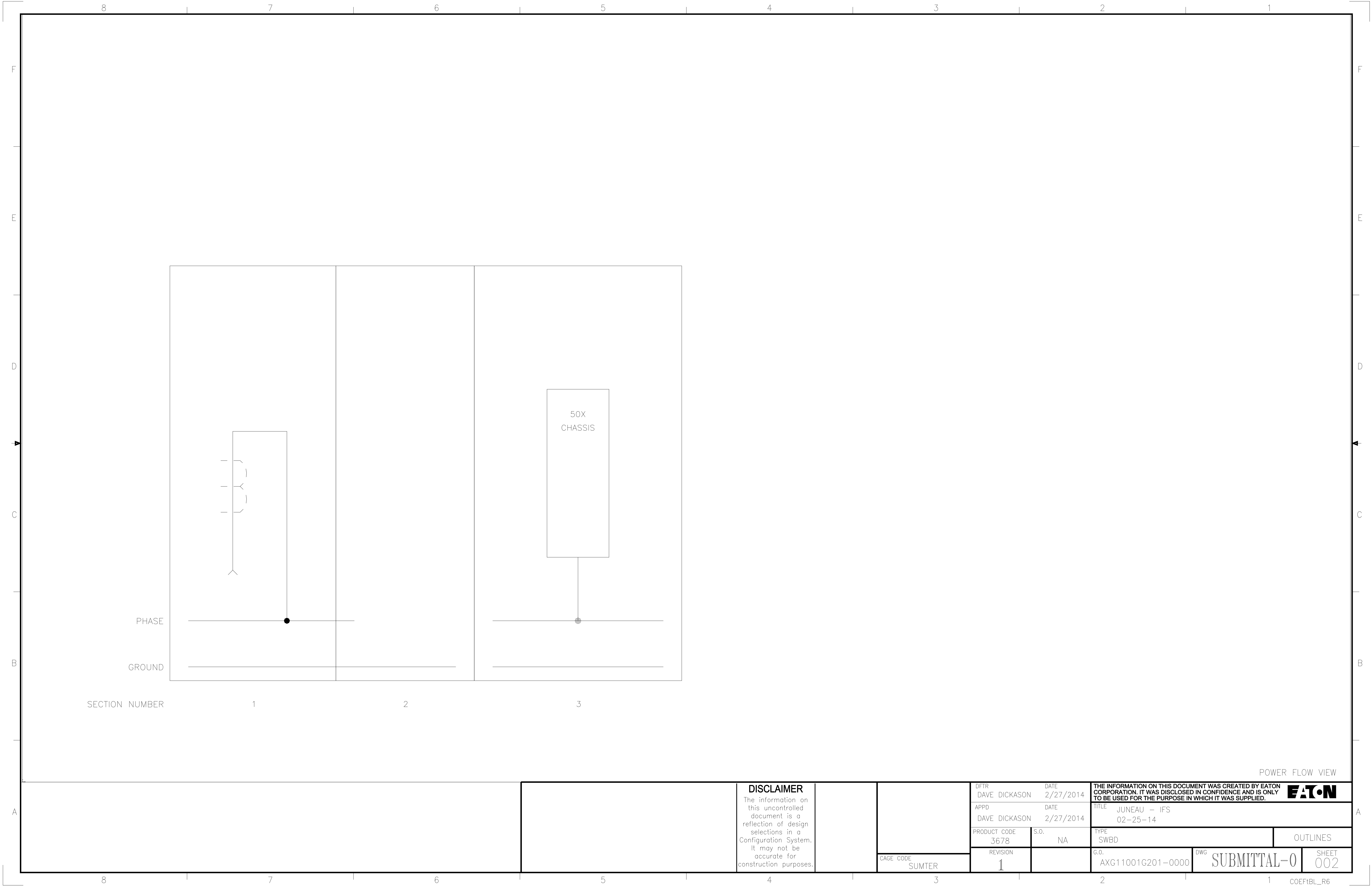
[illegible]

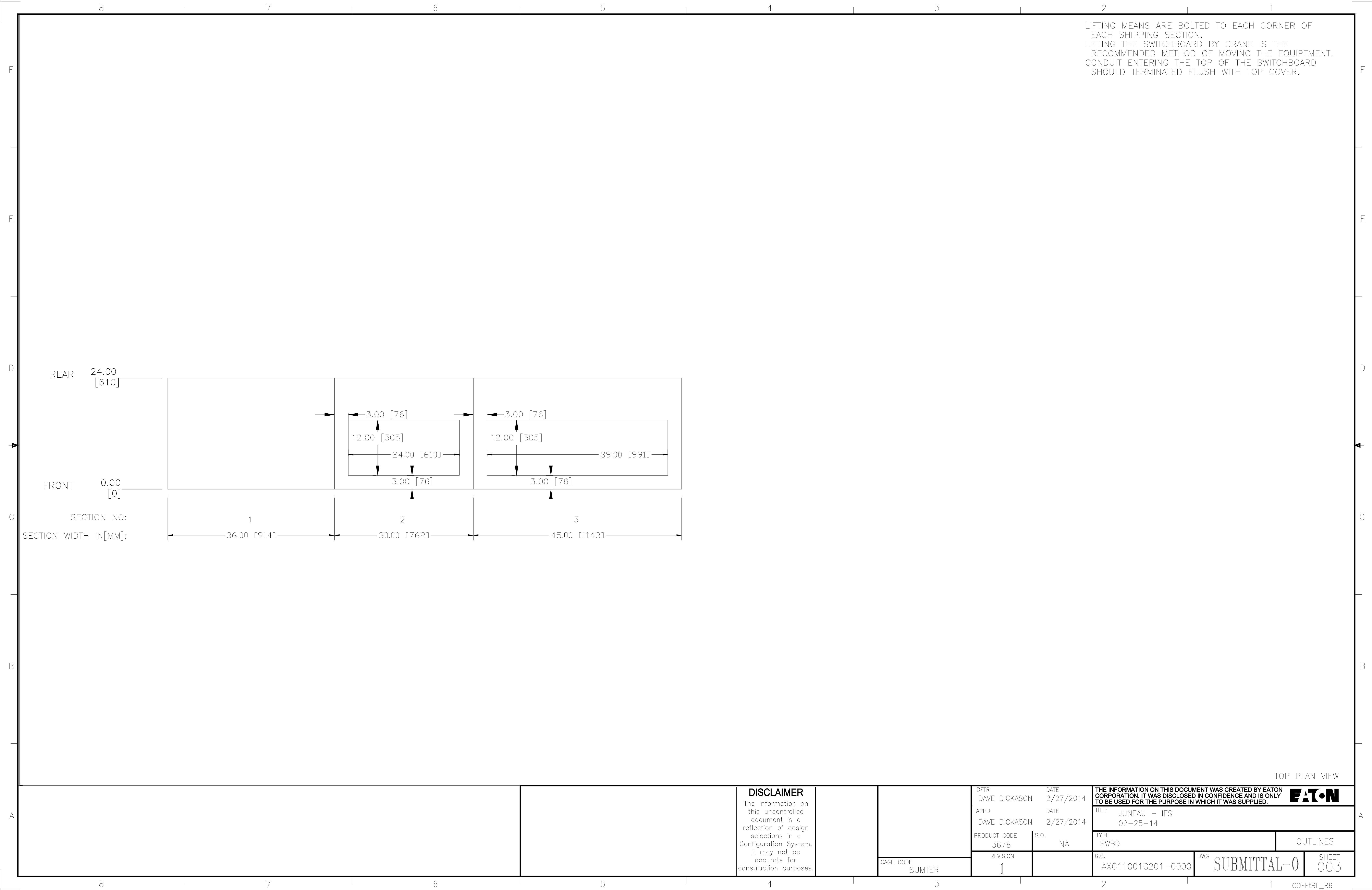
<div><div>X1L</div><div>X2L</div></div> <div><div>X13L</div><div>X13R</div></div> <div><div>X16L</div><div>X16R</div></div> <div><div>X19L</div><div>X19R</div></div> <div><div>X22L</div><div>X22R</div></div> <div><div>X26L</div><div>X26R</div></div> <div><div>X29L</div><div>X29R</div></div> <div><div>X32L</div><div>X32R</div></div> <div><div>X35L</div><div>X35R</div></div> <div><div>X39L</div><div>X39R</div></div> <table><tr><th colspan="3">ID</th><th colspan="15">DEVICE INFORMATION</th><th colspan="6">TERMINATION INFORMATION</th><th rowspan="2">DETAILED DRAWING REFERENCE OR CATALOG NUMBER</th></tr><tr><th>SECTION NUMBER</th><th>UNIT ID</th><th>DEVICE LOCATION</th><th>CIRCUIT NAMEPLATE</th><th>DEVICE TYPE</th><th>DEVICE SIZE</th><th>POLES</th><th>KAIC RATING</th><th>TRIP UNIT (SEE NOTE)</th><th>RATING PLUG</th><th>GROUND FAULT</th><th>SHUNT TRIP (OPEN COIL)</th><th>DEVICE MOTOR OPERATOR</th><th>AUXILIARY SWITCH</th><th>UVR/2ND SHUNT TRIP (2ST)</th><th>BREAKER CELL POSITION SWITCH</th><th>BELL ALARM (OVER CURRENT TRIP SWITCH)</th><th>KEY INTERLOCK</th><th>ACCESSORIES (SEE ACCESSORY CHART)</th><th>CONTROL CABLE ENTRY DIRECTION</th><th>POWER CABLE ENTRY DIRECTION</th><th>TYPE (SEE NOTE)</th><th>PHASE &amp; NEUTRAL SIZE</th><th>#PER PHASE</th><th>#PER NEUTRAL</th><th>GROUND SIZE</th><th>#PER NEUTRAL</th></tr><tr><td>3</td><td>C</td><td>X32L</td><td></td><td>FEEDER BREAKER MOLDED CASE, FD PROVISIONS ONLY</td><td>225</td><td>3</td><td>35</td><td></td><td>A</td><td>N</td><td>N</td><td>MANUAL</td><td></td><td></td><td>N</td><td>N</td><td>N</td><td>ST VOLTS: NONE</td><td></td><td></td><td></td><td></td><td></td><td></td><td></td><td></td><td></td></tr><tr><td>3</td><td>C</td><td>X32R</td><td></td><td>FEEDER BREAKER MOLDED CASE, FD PROVISIONS ONLY</td><td>225</td><td>3</td><td>35</td><td></td><td>A</td><td>N</td><td>N</td><td>MANUAL</td><td></td><td></td><td>N</td><td>N</td><td>N</td><td>ST VOLTS: NONE</td><td></td><td></td><td></td><td></td><td></td><td></td><td></td><td></td><td></td></tr><tr><td>3</td><td>C</td><td>X35L</td><td></td><td>FEEDER BREAKER MOLDED CASE, KD</td><td>400</td><td>3</td><td>35</td><td>TM</td><td>400A</td><td>N</td><td>N</td><td>MANUAL</td><td></td><td></td><td>N</td><td>N</td><td>N</td><td>ST VOLTS: NONE</td><td></td><td></td><td>M</td><td>2/0-500 4-500</td><td>1 -</td><td>- 1</td><td></td><td></td><td>KD3400F KT3400T</td></tr><tr><td>3</td><td>C</td><td>X35R</td><td></td><td>FEEDER BREAKER MOLDED CASE, KD PROVISIONS ONLY</td><td>400</td><td>3</td><td>35</td><td></td><td>A</td><td></td><td></td><td>MANUAL</td><td></td><td></td><td></td><td></td><td></td><td>ST VOLTS:</td><td></td><td></td><td></td><td></td><td></td><td></td><td></td><td></td><td></td></tr><tr><td>3</td><td>C</td><td>X39L</td><td></td><td>FEEDER BREAKER MOLDED CASE, FD</td><td>100</td><td>3</td><td>35</td><td>TM</td><td>100A</td><td>N</td><td>N</td><td>MANUAL</td><td></td><td></td><td>N</td><td>N</td><td>N</td><td>ST VOLTS: NONE</td><td></td><td></td><td>M</td><td>14-1/0 14-1/0</td><td>1 -</td><td>- 1</td><td></td><td></td><td>FD3100</td></tr><tr><td>3</td><td>C</td><td>X39R</td><td></td><td>FEEDER BREAKER MOLDED CASE, FD PROVISIONS ONLY</td><td>225</td><td>3</td><td>35</td><td></td><td>A</td><td>N</td><td>N</td><td>MANUAL</td><td></td><td></td><td>N</td><td>N</td><td>N</td><td>ST VOLTS: NONE</td><td></td><td></td><td></td><td></td><td></td><td></td><td></td><td></td><td></td></tr></table> <div><div>NOTES:</div><div>TERMINATIONS</div><div>M = MECHANICAL CU/AL</div><div>MC = MECHANICAL COPPER ONLY</div><div>C = COMPRESSION TYPE, 2 HOLE MOUNTING, COPPER</div><div>B = NON SEGREGATED PHASE BUS</div><div>PB = PRESS BOLTS</div><div>TRIP UNIT</div><div>TM = THERMAL MAGNETIC</div><div>LS = LONG DELAY, SHORT DELAY</div><div>LSI = LONG DELAY, SHORT DELAY, INSTANTANEOUS</div><div>LSG = LONG DELAY, SHORT DELAY, GROUND FAULT PROTECTION</div><div>LSIG = LONG DELAY, SHORT DELAY, INSTANTANEOUS, GROUND FAULT PROTECTION</div><div>LSA = LONG DELAY, SHORT DELAY, GROUND FAULT ALARM ONLY</div><div>LSIA = LONG DELAY, SHORT DELAY, INSTANTANEOUS, GROUND FAULT ALARM ONLY</div><div>ALIS = ARCFLASH REDUCTION MAINTENANCE SYSTEM, LONG DELAY, SHORT DELAY, INSTANTANEOUS</div><div>ALISA = ARCFLASH REDUCTION MAINTENANCE SYSTEM, LONG DELAY, SHORT DELAY, INSTANTANEOUS, GROUND FAULT ALARM ONLY</div><div>ALSIG = ARCFLASH REDUCTION MAINTENANCE SYSTEM, LONG DELAY, SHORT DELAY, INSTANTANEOUS, GROUND FAULT PROTECTION</div></div> <div><div>ACCESSORY CHART</div><div>OC = OPERATIONS COUNTER</div><div>LC = LATCH CHECK SWITCH</div><div>PAD = PADLOCKABLE HASP</div><div>NPAD = NONPADLOCKABLE</div></div> <div>CHASSIS SCHEDULE</div> <table><tr><td rowspan="4"><div>DISCLAIMER</div><div>The information on this uncontrolled document is a reflection of design selections in a Configuration System. It may not be accurate for construction purposes.</div></td><td rowspan="4"></td><td rowspan="4"></td><td>DFTR</td><td>DAVE DICKASON</td><td>DATE</td><td>2/27/2014</td><td rowspan="4"><div>THE INFORMATION ON THIS DOCUMENT WAS CREATED BY EATON CORPORATION. IT WAS DISCLOSED IN CONFIDENCE AND IS ONLY TO BE USED FOR THE PURPOSE IN WHICH IT WAS SUPPLIED.</div><div>EATON</div></td></tr><tr><td>APPD</td><td>DAVE DICKASON</td><td>DATE</td><td>2/27/2014</td><td>TITLE</td><td colspan="2">JUNEAU - IFS 02-25-14</td></tr><tr><td>PRODUCT CODE</td><td>3678</td><td>S.O.</td><td>NA</td><td>TYPE</td><td colspan="2">SWBD</td><td>SCHEDULES</td></tr><tr><td>REVISION</td><td>1</td><td>G.O.</td><td>AXG11001G201-0000</td><td>DWG</td><td colspan="2">SUBMITTAL-N</td><td>SHEET</td><td>003</td></tr></table> <div>COEFtBL_R6</div>		ID			DEVICE INFORMATION															TERMINATION INFORMATION						DETAILED DRAWING REFERENCE OR CATALOG NUMBER	SECTION NUMBER	UNIT ID	DEVICE LOCATION	CIRCUIT NAMEPLATE	DEVICE TYPE	DEVICE SIZE	POLES	KAIC RATING	TRIP UNIT (SEE NOTE)	RATING PLUG	GROUND FAULT	SHUNT TRIP (OPEN COIL)	DEVICE MOTOR OPERATOR	AUXILIARY SWITCH	UVR/2ND SHUNT TRIP (2ST)	BREAKER CELL POSITION SWITCH	BELL ALARM (OVER CURRENT TRIP SWITCH)	KEY INTERLOCK	ACCESSORIES (SEE ACCESSORY CHART)	CONTROL CABLE ENTRY DIRECTION	POWER CABLE ENTRY DIRECTION	TYPE (SEE NOTE)	PHASE & NEUTRAL SIZE	#PER PHASE	#PER NEUTRAL	GROUND SIZE	#PER NEUTRAL	3	C	X32L		FEEDER BREAKER MOLDED CASE, FD PROVISIONS ONLY	225	3	35		A	N	N	MANUAL			N	N	N	ST VOLTS: NONE										3	C	X32R		FEEDER BREAKER MOLDED CASE, FD PROVISIONS ONLY	225	3	35		A	N	N	MANUAL			N	N	N	ST VOLTS: NONE										3	C	X35L		FEEDER BREAKER MOLDED CASE, KD	400	3	35	TM	400A	N	N	MANUAL			N	N	N	ST VOLTS: NONE			M	2/0-500 4-500	1 -	- 1			KD3400F KT3400T	3	C	X35R		FEEDER BREAKER MOLDED CASE, KD PROVISIONS ONLY	400	3	35		A			MANUAL						ST VOLTS:										3	C	X39L		FEEDER BREAKER MOLDED CASE, FD	100	3	35	TM	100A	N	N	MANUAL			N	N	N	ST VOLTS: NONE			M	14-1/0 14-1/0	1 -	- 1			FD3100	3	C	X39R		FEEDER BREAKER MOLDED CASE, FD PROVISIONS ONLY	225	3	35		A	N	N	MANUAL			N	N	N	ST VOLTS: NONE										<div>DISCLAIMER</div> <div>The information on this uncontrolled document is a reflection of design selections in a Configuration System. It may not be accurate for construction purposes.</div>			DFTR	DAVE DICKASON	DATE	2/27/2014	<div>THE INFORMATION ON THIS DOCUMENT WAS CREATED BY EATON CORPORATION. IT WAS DISCLOSED IN CONFIDENCE AND IS ONLY TO BE USED FOR THE PURPOSE IN WHICH IT WAS SUPPLIED.</div> <div>EATON</div>	APPD	DAVE DICKASON	DATE	2/27/2014	TITLE	JUNEAU - IFS 02-25-14		PRODUCT CODE	3678	S.O.	NA	TYPE	SWBD		SCHEDULES	REVISION	1	G.O.	AXG11001G201-0000	DWG	SUBMITTAL-N		SHEET	003
		ID			DEVICE INFORMATION															TERMINATION INFORMATION							DETAILED DRAWING REFERENCE OR CATALOG NUMBER																																																																																																																																																																																																																																		
		SECTION NUMBER	UNIT ID	DEVICE LOCATION	CIRCUIT NAMEPLATE	DEVICE TYPE	DEVICE SIZE	POLES	KAIC RATING	TRIP UNIT (SEE NOTE)	RATING PLUG	GROUND FAULT	SHUNT TRIP (OPEN COIL)	DEVICE MOTOR OPERATOR	AUXILIARY SWITCH	UVR/2ND SHUNT TRIP (2ST)	BREAKER CELL POSITION SWITCH	BELL ALARM (OVER CURRENT TRIP SWITCH)	KEY INTERLOCK	ACCESSORIES (SEE ACCESSORY CHART)	CONTROL CABLE ENTRY DIRECTION	POWER CABLE ENTRY DIRECTION	TYPE (SEE NOTE)	PHASE & NEUTRAL SIZE	#PER PHASE	#PER NEUTRAL		GROUND SIZE	#PER NEUTRAL																																																																																																																																																																																																																																
		3	C	X32L		FEEDER BREAKER MOLDED CASE, FD PROVISIONS ONLY	225	3	35		A	N	N	MANUAL			N	N	N	ST VOLTS: NONE																																																																																																																																																																																																																																									
		3	C	X32R		FEEDER BREAKER MOLDED CASE, FD PROVISIONS ONLY	225	3	35		A	N	N	MANUAL			N	N	N	ST VOLTS: NONE																																																																																																																																																																																																																																									
		3	C	X35L		FEEDER BREAKER MOLDED CASE, KD	400	3	35	TM	400A	N	N	MANUAL			N	N	N	ST VOLTS: NONE			M	2/0-500 4-500	1 -	- 1			KD3400F KT3400T																																																																																																																																																																																																																																
		3	C	X35R		FEEDER BREAKER MOLDED CASE, KD PROVISIONS ONLY	400	3	35		A			MANUAL						ST VOLTS:																																																																																																																																																																																																																																									
		3	C	X39L		FEEDER BREAKER MOLDED CASE, FD	100	3	35	TM	100A	N	N	MANUAL			N	N	N	ST VOLTS: NONE			M	14-1/0 14-1/0	1 -	- 1			FD3100																																																																																																																																																																																																																																
3	C	X39R		FEEDER BREAKER MOLDED CASE, FD PROVISIONS ONLY	225	3	35		A	N	N	MANUAL			N	N	N	ST VOLTS: NONE																																																																																																																																																																																																																																											
<div>DISCLAIMER</div> <div>The information on this uncontrolled document is a reflection of design selections in a Configuration System. It may not be accurate for construction purposes.</div>			DFTR	DAVE DICKASON	DATE	2/27/2014	<div>THE INFORMATION ON THIS DOCUMENT WAS CREATED BY EATON CORPORATION. IT WAS DISCLOSED IN CONFIDENCE AND IS ONLY TO BE USED FOR THE PURPOSE IN WHICH IT WAS SUPPLIED.</div> <div>EATON</div>																																																																																																																																																																																																																																																						
			APPD	DAVE DICKASON	DATE	2/27/2014		TITLE	JUNEAU - IFS 02-25-14																																																																																																																																																																																																																																																				
			PRODUCT CODE	3678	S.O.	NA		TYPE	SWBD		SCHEDULES																																																																																																																																																																																																																																																		
			REVISION	1	G.O.	AXG11001G201-0000		DWG	SUBMITTAL-N		SHEET	003																																																																																																																																																																																																																																																	











TOP PLAN VIEW

DISCLAIMER

The information on this uncontrolled document is a reflection of design selections in a Configuration System. It may not be accurate for construction purposes.

CAGE CODE  
SUMTER

DFTR  
DAVE DICKASON

DATE  
2/27/2014

APPD  
DAVE DICKASON

DATE  
2/27/2014

PRODUCT CODE  
3678

S.O.  
NA

REVISION  
1

THE INFORMATION ON THIS DOCUMENT WAS CREATED BY EATON CORPORATION. IT WAS DISCLOSED IN CONFIDENCE AND IS ONLY TO BE USED FOR THE PURPOSE IN WHICH IT WAS SUPPLIED.



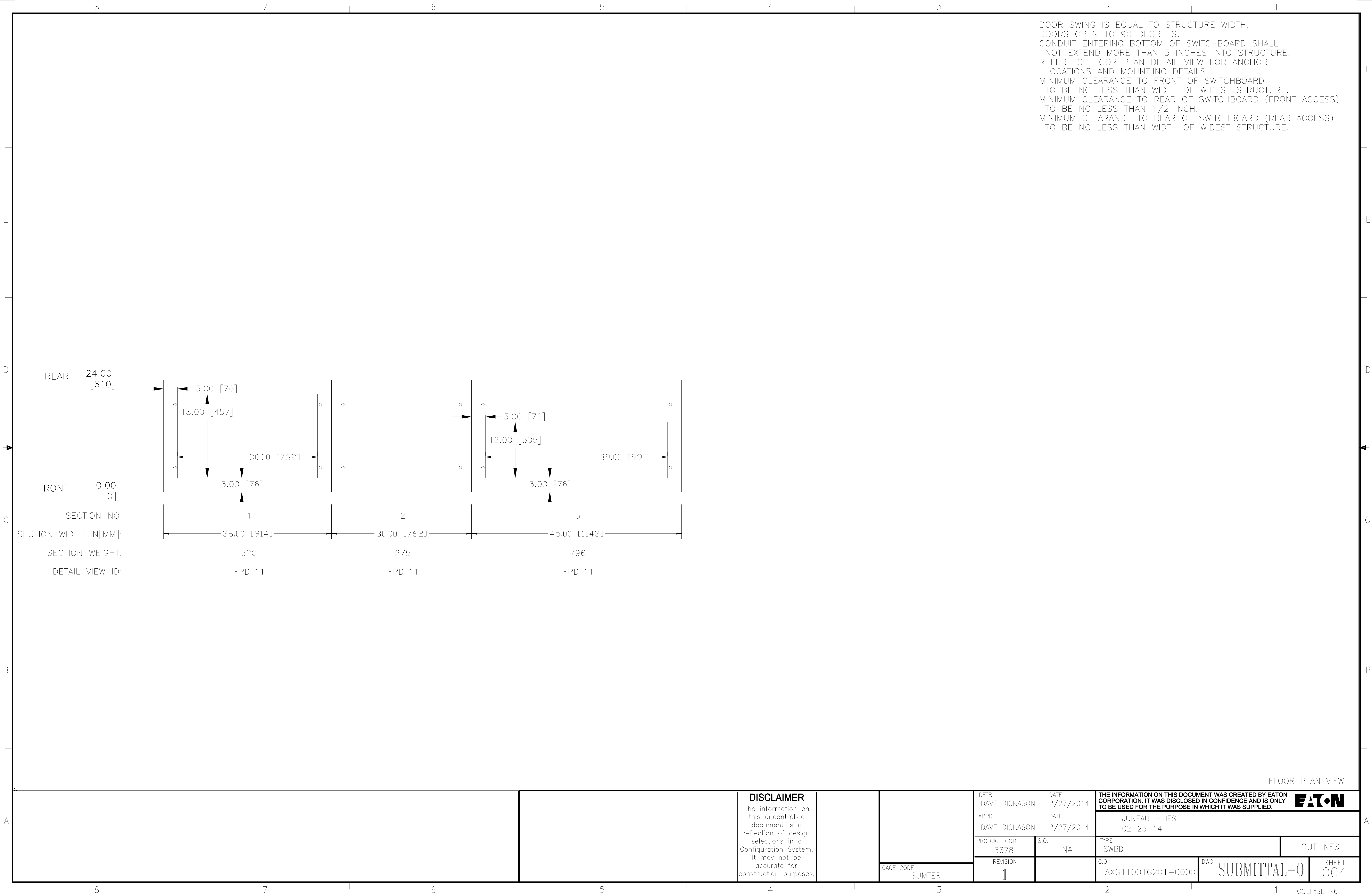
TITLE  
JUNEAU - IFS  
02-25-14

TYPE  
SWBD

G.O.  
AXG11001G201-0000

DWG  
SUBMITTAL-0

SHEET  
003



DISCLAIMER

The information on this uncontrolled document is a reflection of design selections in a Configuration System. It may not be accurate for construction purposes.

CAGE CODE SUMTER

DFTR DAVE DICKASON DATE 2/27/2014

APPD DAVE DICKASON DATE 2/27/2014

PRODUCT CODE 3678 S.O. NA

REVISION 1

THE INFORMATION ON THIS DOCUMENT WAS CREATED BY EATON CORPORATION. IT WAS DISCLOSED IN CONFIDENCE AND IS ONLY TO BE USED FOR THE PURPOSE IN WHICH IT WAS SUPPLIED.



TITLE JUNEAU - IFS 02-25-14

TYPE SWBD

OUTLINES

G.O. AXG11001G201-0000

DWG SUBMITTAL-0

SHEET 004

