

# CALL FOR ARTISTS



ENGINEERING DEPARTMENT

## INFORMATION TO PROPOSERS

for

**CFA E14-222**

**Design, Production and Installation of Art  
for the Gastineau Community School**

### **ISSUED BY:**

City and Borough of Juneau  
ENGINEERING DEPARTMENT  
155 South Seward Street  
Juneau, Alaska 99801

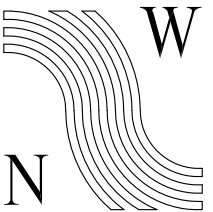
**Date Issued: May 13, 2014**

---

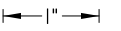
The following information is posted online. Please refer to the CBJ Engineering Contracts Division webpage at: [http://www.juneau.org/engineering\\_ftp/contracts/Contracts.php](http://www.juneau.org/engineering_ftp/contracts/Contracts.php). This is *not* an addendum.

Dimension drawings of the Gastineau Community School Remodel have been posted to the above mentioned CBJ Engineering Contracts Division webpage.





**NorthWind Architects LLC**  
 119A 2ND ST.  
 JUNEAU, AK 99801  
 PH #907.586.6150  
 FX #907.586.6181  
 WWW.NORTHWINDARCH.COM



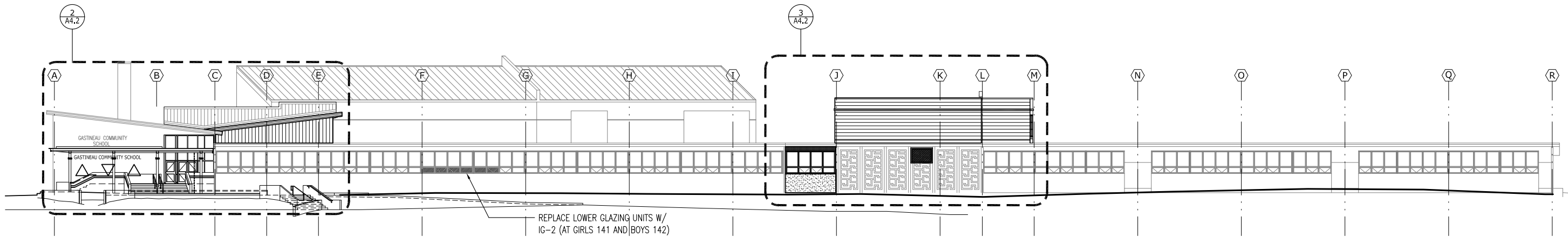
IF THE ABOVE DIMENSION DOES NOT EQUAL EXACTLY 1", THIS DRAWING HAS BEEN ENLARGED OR REDUCED, AFFECTING ALL LABELLED SCALES

**GASTINEAU ELEMENTARY SCHOOL RENOVATION**  
 CBJ Contract No. E11-137 CONFORMED  
 JUNEAU, ALASKA

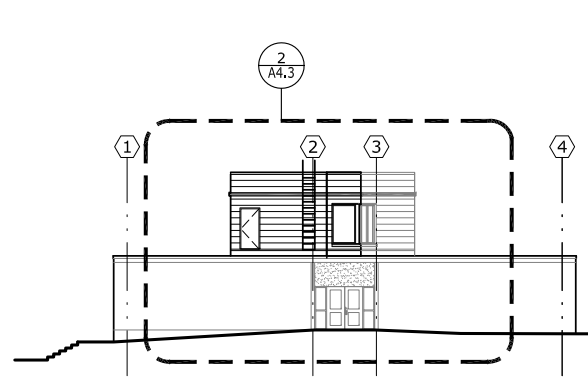
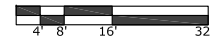
SHEET TITLE:  
**OVERALL ELEVATIONS**

DATE: NOV. 15, 2010  
 REVISION: Jan. 24, 2011  
 CHECKED BY: SB  
 DRAWN: EK, GG, SB

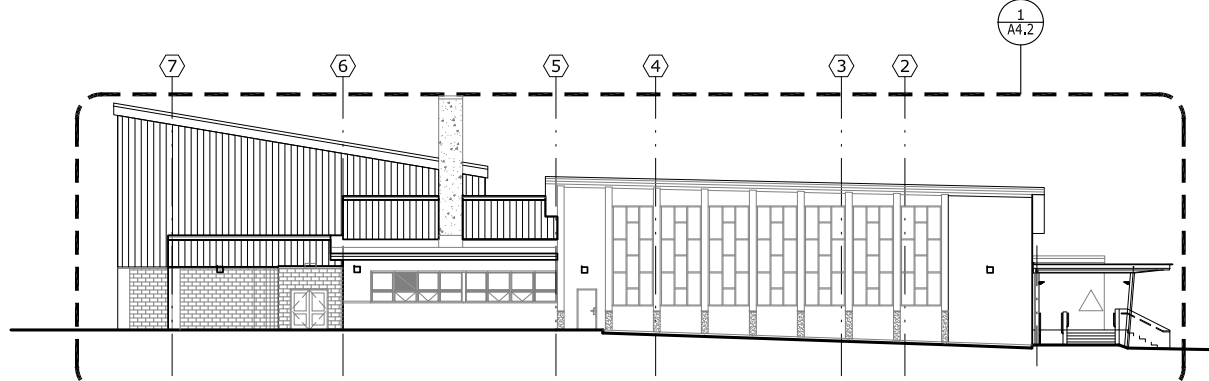
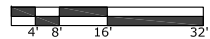
SHEET #  
**A4.0**



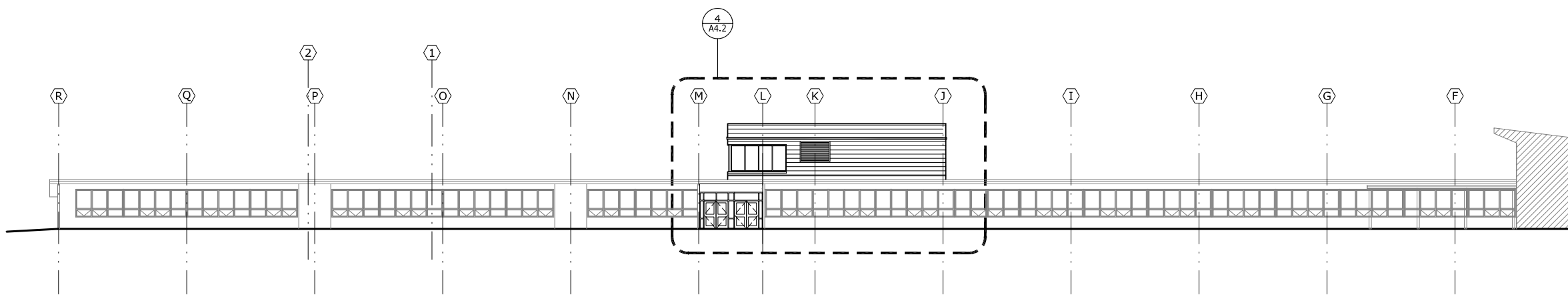
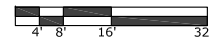
**1 NORTH ELEVATION**  
 1/16" = 1'-0"



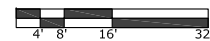
**2 WEST ELEVATION**  
 1/16" = 1'-0"



**3 EAST ELEVATION**  
 1/16" = 1'-0"

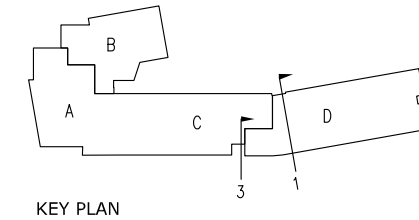


**4 SOUTH ELEVATION**  
 1/16" = 1'-0"



SOUTH GYM  
 ELEVATION  
 SEE 2/A4.1





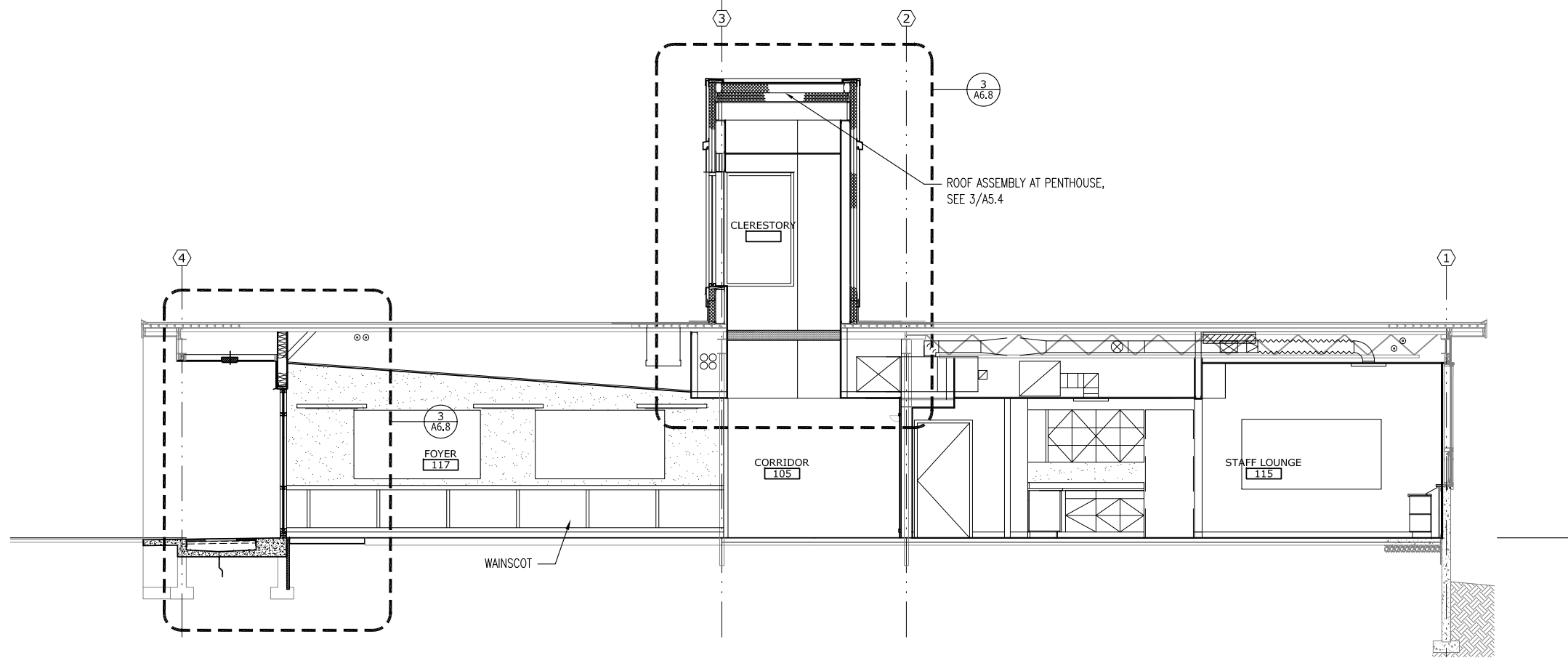
1" = 1'-0"  
 IF THE ABOVE DIMENSION DOES NOT EQUAL EXACTLY 1", THIS DRAWING HAS BEEN ENLARGED OR REDUCED, AFFECTING ALL LABELLED SCALES

**GASTINEAU ELEMENTARY SCHOOL RENOVATION**  
 CBJ Contract No. E11-157 CONFORMED DOCUMENTS  
 JUNEAU, ALASKA

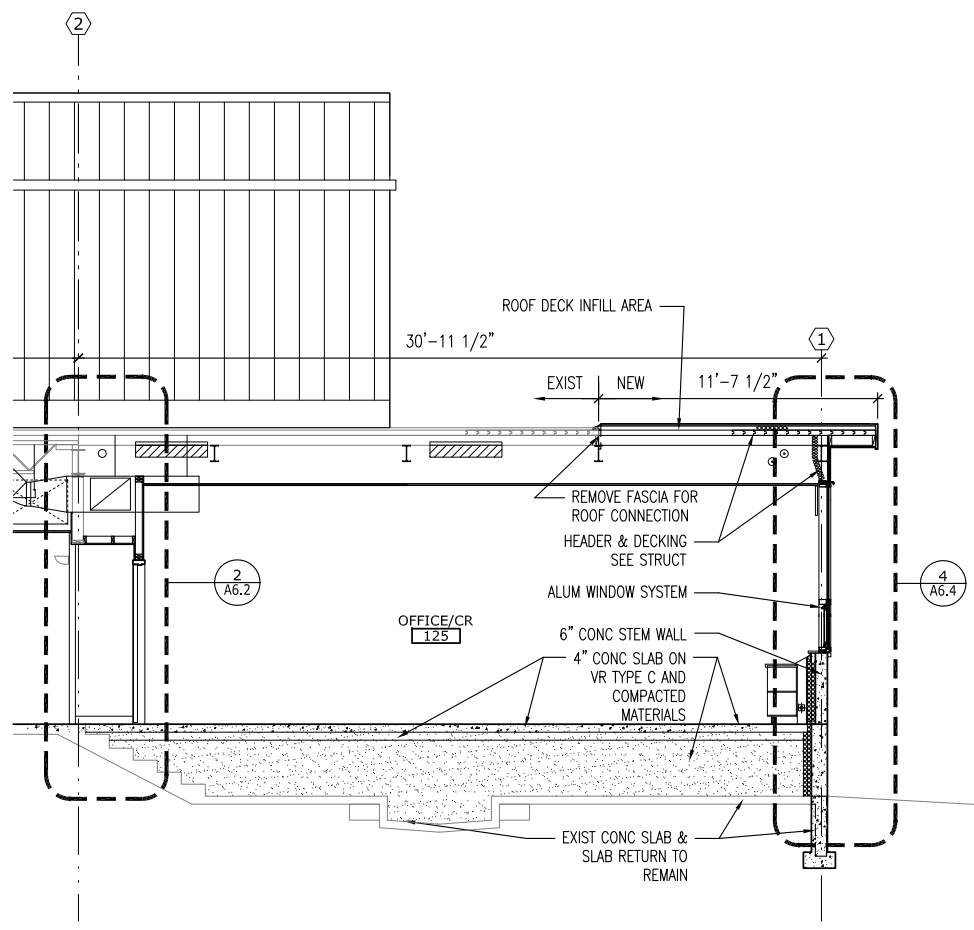
SHEET TITLE:  
**SECTIONS**

DATE: NOV. 15, 2010  
 REVISION: JAN. 24, 2011  
 CHECKED BY: SB  
 DRAWN: GG, EK, SB

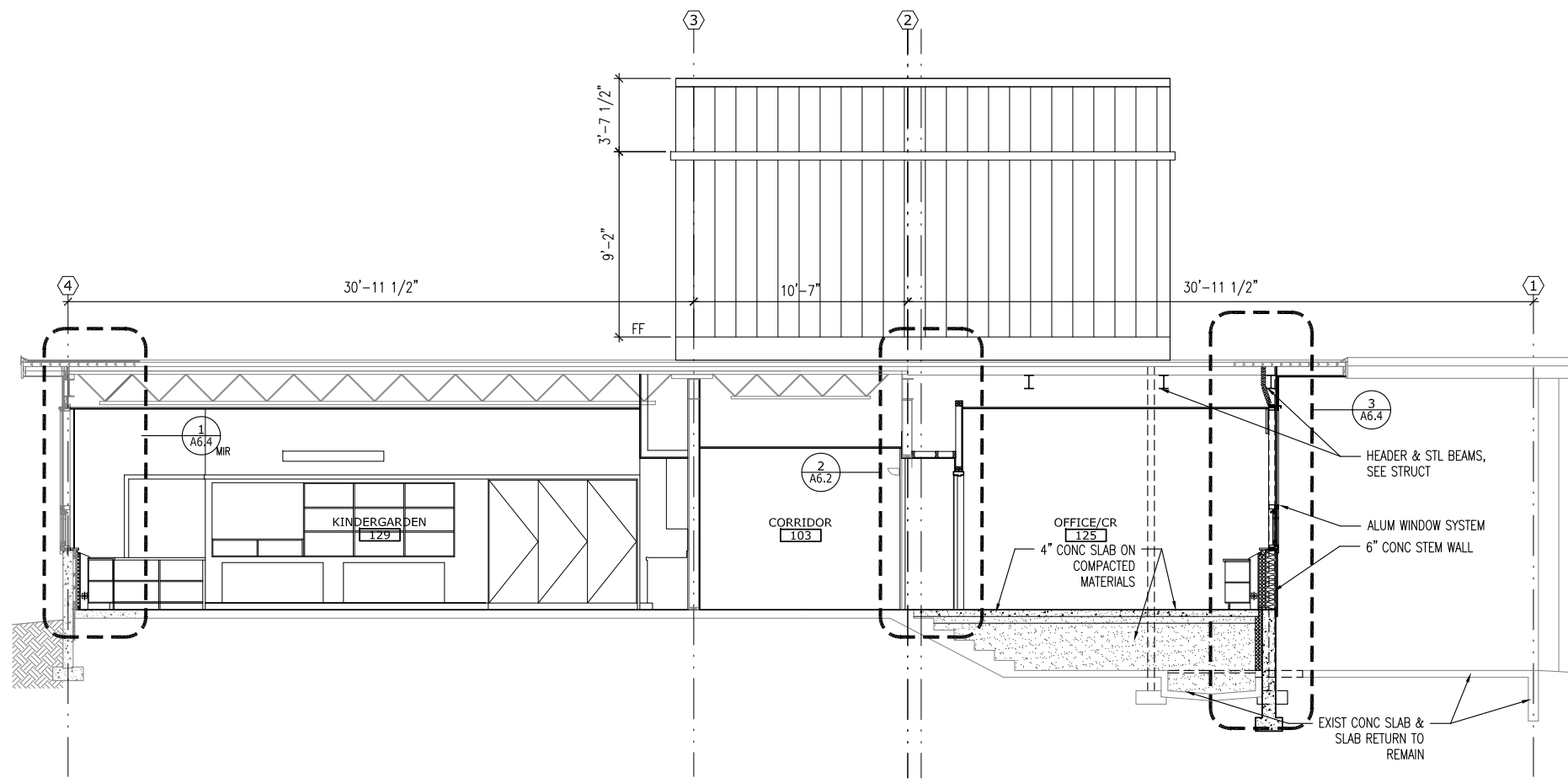
SHEET #  
**A5.1**



① CROSS SECTION AT GRID M  
 1/4" = 1'-0"



③ CROSS SECTION AT GRID J - ADD. ALT.  
 1/4" = 1'-0"

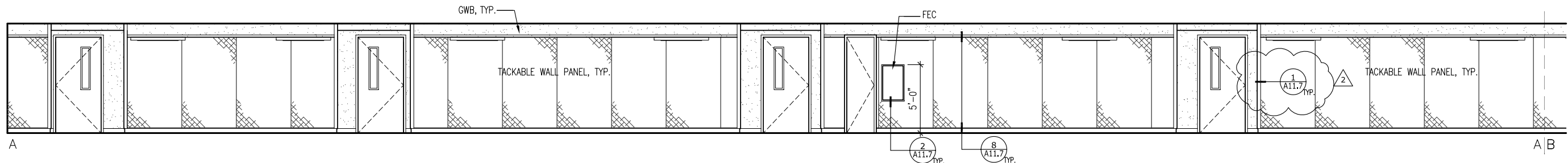


② CROSS SECTION AT GRID J - BASE BID  
 1/4" = 1'-0"

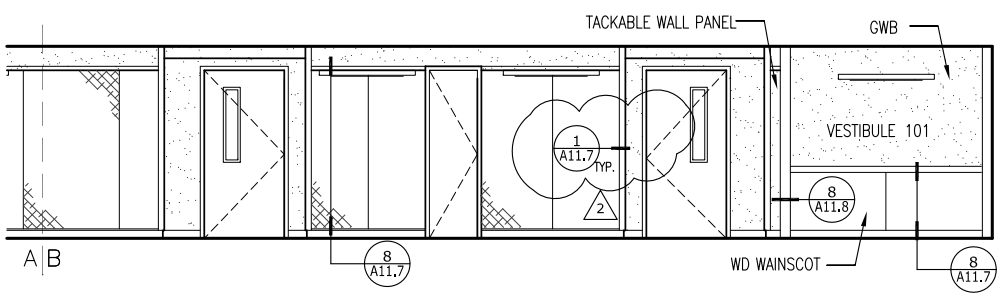
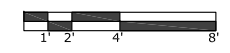
IF THE ABOVE DIMENSION DOES NOT EQUAL EXACTLY 1", THIS DRAWING HAS BEEN ENLARGED OR REDUCED, AFFECTING ALL LABELLED SCALES

**GASTINEAU ELEMENTARY SCHOOL**  
**RENOVATION**  
 CBJ Contract No. E11-137 CONFORMED DOCUMENTS  
 JUNEAU, ALASKA

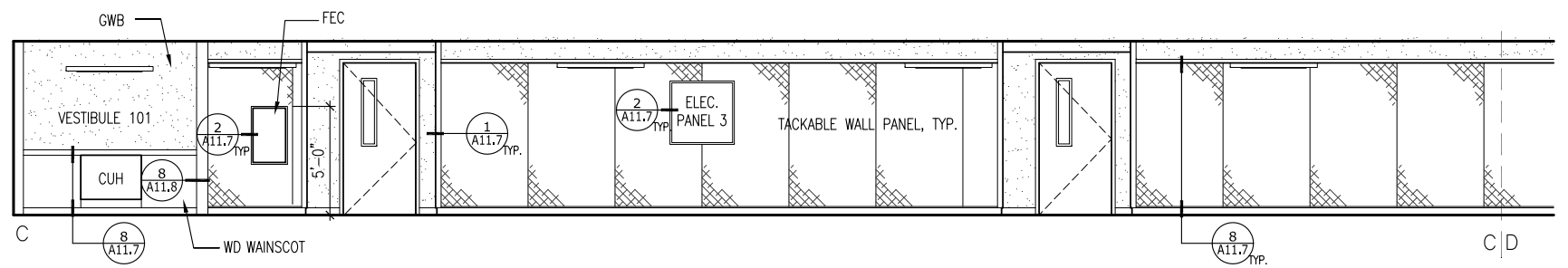
SHEET TITLE:  
**INTERIOR ELEVATIONS**  
 DATE: NOV. 15, 2010  
 REVISION: Jan. 24, 2011  
 CHECKED BY: SB  
 DRAWN: FD, DH  
 SHEET #



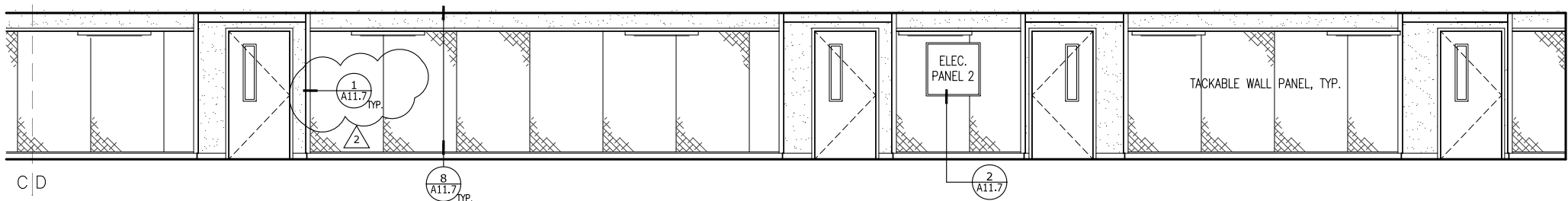
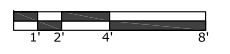
1 CORRIDOR 102-A  
 1/4" = 1'-0"



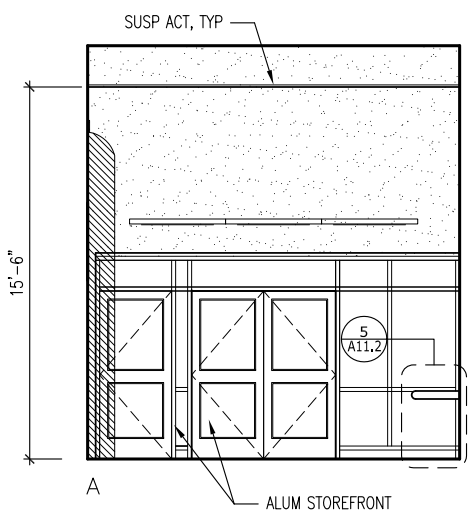
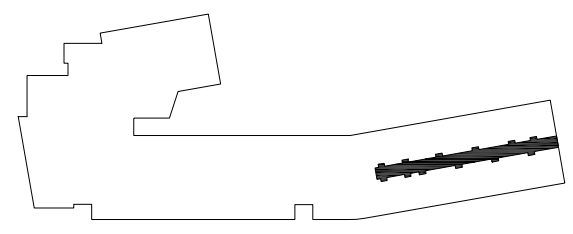
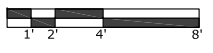
1 CORRIDOR 102-B  
 1/4" = 1'-0"



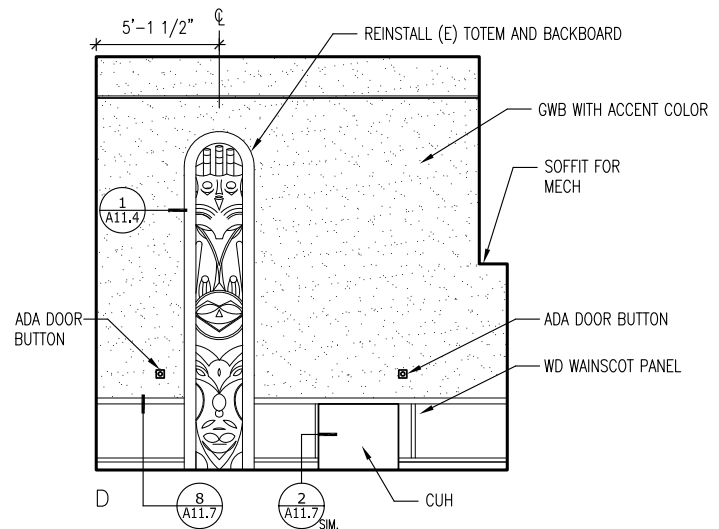
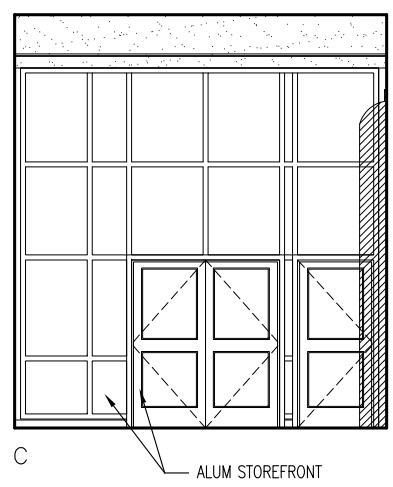
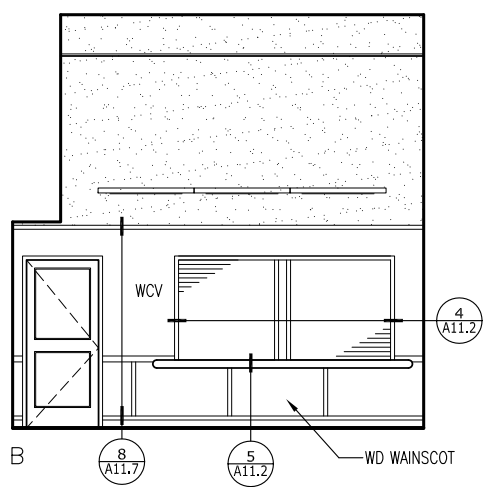
1 CORRIDOR 102-C  
 1/4" = 1'-0"



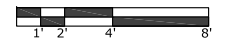
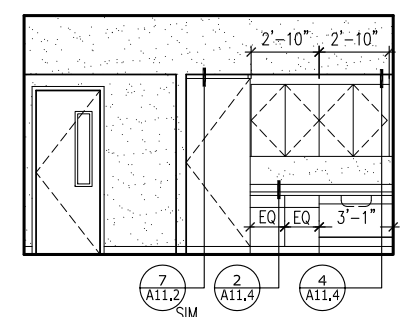
1 CORRIDOR 102-D  
 1/4" = 1'-0"



2 ENTRY VESTIBULE 146  
 1/4" = 1'-0"



3 ELL 120  
 1/4" = 1'-0"



IF THE ABOVE DIMENSION DOES NOT EQUAL EXACTLY 1", THIS DRAWING HAS BEEN ENLARGED OR REDUCED, AFFECTING ALL LABELLED SCALES

**GASTINEAU ELEMENTARY SCHOOL**  
**RENOVATION**  
 CBJ Contract No. E11-137 CONFORMED DOCUMENTS  
 JUNEAU, ALASKA

SHEET TITLE:  
**INTERIOR ELEVATIONS**  
 DATE: NOV. 15, 2010  
 REVISION: Jan. 24, 2011  
 CHECKED BY: SB  
 DRAWN: FD, DH  
 SHEET #

**A8.7**

