



ADDENDUM TO THE CONTRACT

for the

JUNEAU DOUGLAS CITY MUSEUM HVAC UPGRADES Contract No. E14-194

ADDENDUM NO.: TWO

CURRENT DEADLINE FOR BIDS:
February 20, 2014

PREVIOUS ADDENDA: ONE

ISSUED BY: City and Borough of Juneau
ENGINEERING DEPARTMENT
155 South Seward Street
Juneau, Alaska 99801

DATE ADDENDUM ISSUED: February 14, 2014

The following items of the contract are modified as herein indicated. All other items remain the same. This addendum has been issued and is posted online. Please refer to the CBJ Engineering Contracts Division webpage at: <http://www.juneau.org/engineering ftp/contracts/Contracts.php>

PROJECT MANUAL:

- Item No. 1. SECTION 01010 – SUMMARY OF WORK, PART 1 – GENERAL, Article 1.6 – MOVING AND HANDLING MUSEUM ARTIFACTS AND RESEARCH MATERIALS, Paragraph B, Subparagraph 2. **Delete** in its entirety and **replace** with the following:
- “2. CONTRACTOR will submit a preliminary abatement plan as part of ‘Plan of Operation’ during the Pre-Construction Meeting.
 - a. Basement storage of collections and artifacts are to remain with existing shelving storage systems and are to be protected by CONTRACTOR. (See Drawing No. 1 of 1 – BASEMENT: MOVING AND HANDLING, labeled Addendum No. 2.)
 - b. OWNER will be responsible for the temporary relocation and off-site storage of office furniture shelving and supplies in three areas of basement. These areas will be completely cleared and made available for CONTRACTOR staging area. OWNER requires no less than 10 working days to complete the task. (See Drawing No. 1 of 1 – BASEMENT: MOVING AND HANDLING, labeled Addendum No. 2.)”
- Item No. 2. SECTION 01550 – SITE ACCESS AND STORAGE, PART 1 – GENERAL, Article 1.2 – PARKING, Paragraph A. **Delete** in its entirety and **replace** with the following:
- “A. The CONTRACTOR shall direct its employees to park in areas at the site as directed by the Engineer.

1. Two parking spaces located in front of building will be provided by owner for contractor use through duration of project. Existing parking space located on west side of building is available to contractor as needed for loading/unloading.”

Item No. 3. SECTION 15850 – AIR OUTLETS AND INLETS, PART 2 – PRODUCTS. **Add** the following Article:

“2.6 ARTICULATING SNORKEL EXHAUST

- A. Manufacturers: Movex Model MiniTEX MXT 1500-75, or approved equal.
- B. Product Description: Adjustable snorkel exhaust system. 360 degree rotation with articulating arm. Less than 0.4 inch wc pressure drop at 75 cfm.
- C. Materials: Hard duct materials to be thin-walled aluminum. Other steel components can be powder-coated steel.
- D. Hose: 3 inch diameter, spring-steel coil completely enclosed in PVC coated fabric. Temperature range of -5 deg F to 170 deg F.
- E. Bracket: Ceiling bracket for mounting to structure with side duct inlet. Finish ceiling sleeve. Contractor to coordinate vertical height. Movex model MTI-125 with MTI CT-125 covering plate.
- F. Hood: Transparent PETG dome hood, MK 350 or equal.”

Item No. 4. SECTION 16095 – ELECTRICAL DEMOLITION, PART 1 – GENERAL, Article 1.1 – SECTION INCLUDES. **Add** Paragraph B.

“B. Electrical not being changed.

1. Existing Security, Fire Alarm, door chimes and other low voltage systems are not being modified. Provide temporary supports, extensions of raceways, cables as required. “

Item No. 5. SECTION 16130 – RACEWAYS AND BOXES, PART 2 – PRODUCTS, Article 2.1 – CONDUIT REQUIREMENTS, Paragraph F. **Add** subparagraph 4.

“4. Surface raceway shall be used to for extensions on existing building surfaces. ”

Item No. 6. SECTION 16210 – UTILITY SERVICES, PART 1 – GENERAL. **Add** Article 1.16.

“1.16 UTILITY SERVICE EXTENSION PAYMENT

- A. Owner shall contract with utility company (AEL&P) for payment of work related to the service changes. “

Item No. 7. SECTION 16210 – UTILITY SERVICES, PART 2 – PRODUCTS, Article 2.2 – METER BASES, Paragraph A. **Delete** “base” from first sentence.

DRAWINGS:

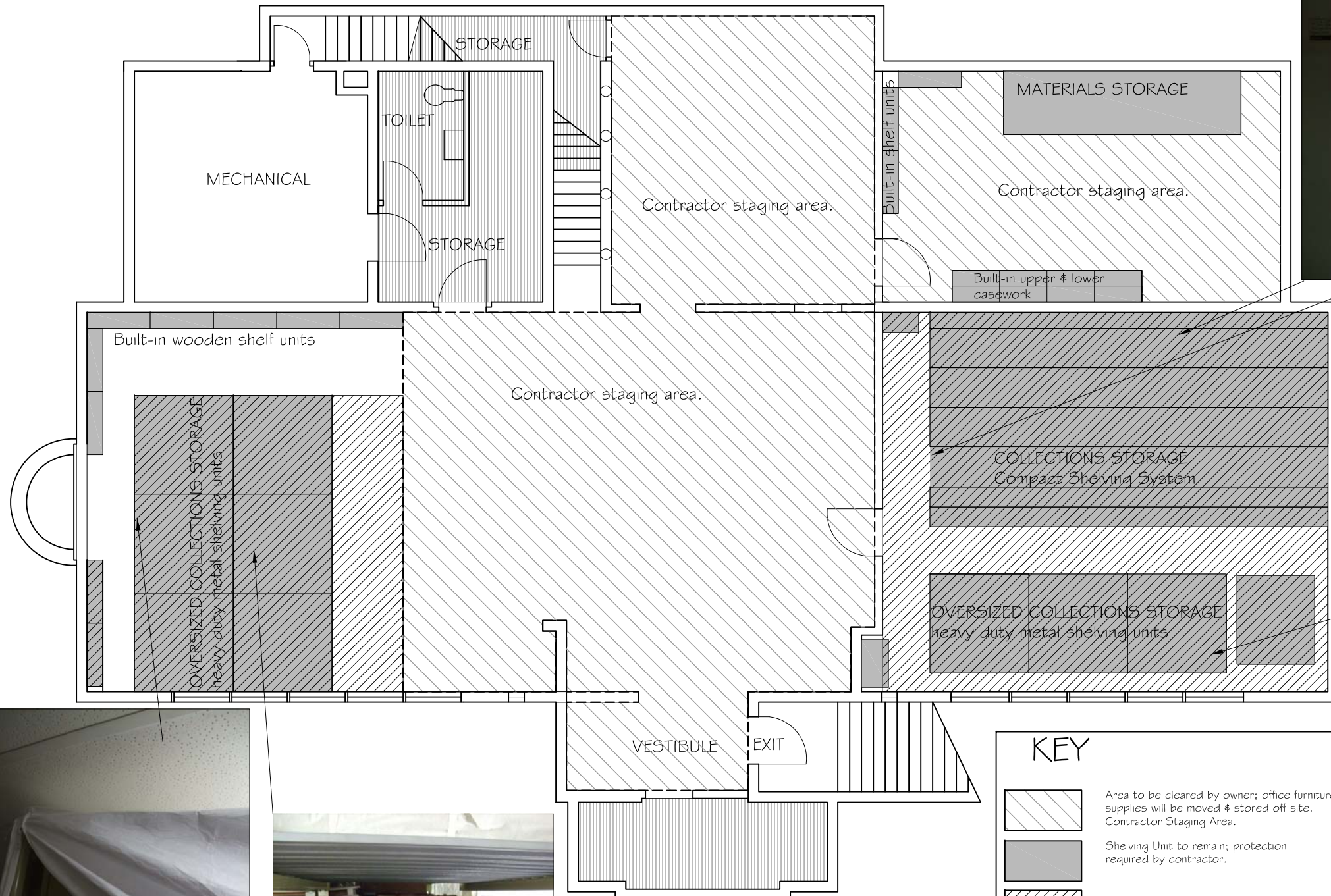
- Item No. 6 Drawings H001 – HAZARDS ABATEMENT GENERAL AND SHEET NOTES AND QUANTITIES, H101 – HAZARDS ABATEMENT BASEMENT LEVEL, H102 – HAZARDS ABATEMENT LEVEL 1 and H103 – HAZARDS ABATEMENT LEVEL 2. *CLARIFICATION:* Note that the “Sheet Notes” are the same for all sheets, and that all “Sheet Notes” are not referenced or relevant to each sheet.
- Item No. 7 Drawings H001 – HAZARDS ABATEMENT GENERAL AND SHEET NOTES AND QUANTITIES, H101 – HAZARDS ABATEMENT BASEMENT LEVEL, H102 – HAZARDS ABATEMENT LEVEL 1 and H103 – HAZARDS ABATEMENT LEVEL 2, Sheet Note 5. *Add* the following:

“WINDOW REMOVAL IS PART OF ALTERNATE 1.”
- Item No. 8 *Add* Drawing 1 of 1 – Basement: Moving and Handling, labeled Addendum No. 2.

By: _____


Rich Ritter, AIA,
Acting Contracts Officer

Total number of pages contained within this Addendum: 4



KEY

	Area to be cleared by owner; office furniture & supplies will be moved & stored off site. Contractor Staging Area.
	Shelving Unit to remain; protection required by contractor.
	Collections to remain, protection required by contractor.
	Area to be cleared by owner as required by contractor.



Do not scale from this drawing, field verify all dimensions

Juneau Douglas City Museum
 Basement: Moving and Handling

-Architecture Division
 CITY/BOROUGH OF JUNEAU Alaska's Capital City

Date:
 February 13, 2014

E14-194
 Sheet number:
 1 of 1

Addendum No. 2