

CONSTRUCTION DOCUMENTS

Juneau Police Dept. (JPD) & Hagevig Fire Training Center (FTC)

SECURITY ACCESS GATES INSTALLATION

A.E. Rogers

ARCHITECTS, LLC

P.O. Box 34401 • Juneau, Alaska 99803
Tele 907.789.7589 Fax 907.789.1638

	ARCHITECTURAL A.E. ROGERS ARCHITECTS, LLC P.O. BOX 34401 JUNEAU, ALASKA 99803 907-789-7589 CELL 907-723-4000 EMAIL arogers@aerogers.com	ELECTRICAL GORMAN ENGINEERS 10761 HORIZON DRIVE JUNEAU, ALASKA 99801 907-463-6721 FAX 907-586-6216 EMAIL pgorman@gci.net	OWNER CITY & BOROUGH OF JUNEAU 155 S. Seward Street JUNEAU, ALASKA 99801 907-586-0894 FAX 907-463-2606 EMAIL Steve_Tada@ci.juneau.ak.us
--	---	--	---

CBJ PROJECT NO. E14-018

CITY AND BOROUGH OF JUNEAU

ALASKA'S CAPITAL CITY

ABREVIATIONS

NOTE: THIS IS A GENERIC LIST. NOT ALL ABBREVIATIONS ARE USED IN DRAWINGS

AB	ANCHOR BOLTS	(E)	EXISTING	MTD	MOUNTED	REQ	REQUIRED
ACOUS	ACOUSTICAL	EXIST	EXISTING	MTL	METAL	RESIL	RESILIENT
ACM	ASBESTOS CONTAINING MATERIAL	EXT	EXTERIOR	MUL	MULLION	RFP	REINFORCED FIBERGLASS PANEL
ACT	ACOUSTICAL CEILING TILE	FA	FIRE ALARM	N	NORTH	RGTR	REGISTER
AFF	ABOVE FINISH FLOOR	FD	FLOOR DRAIN	NIC	NOT IN CONTRACT	RM	ROOM
AL	ALUMINUM	FE	FIRE EXTINGUISHER	NO OR #	NO	RO	ROUGH OPENING
ARCH	ARCHITECTURAL	FHC	FIRE HOSE CABINET	NOM	NOMINAL	SCHED	SCHEDULE
ASB	ASBESTOS	FIN	FINISH	NTS	NOT TO SCALE	SD	SOAP DISPENSER
ASPH	ASPHALT	FL	FLOOR	OA	OVERALL	SHTG	SHEATHING
BD	BOARD	FOC	FACE OF CONCRETE	OBS	OBSOLETE	SIM	SIMILAR
BITUM	BITUMINOUS	FOF	FACE OF FINISH	OC	ON CENTER	SPEC	SPECIFICATIONS
BLDG	BUILDING	FOS	FACE OF STUDS	OD	OUTSIDE DIAMETER	STC	SOUND TRANSMISSION CLASS
BOD	BOTTOM OF DECK	FT	FOOT OR FEET	OF	OWNER FURNISH	STD	STANDARD
CB	CATCH BASIN	FURR	FURRING	OFI	CONTRACTOR INSTALL	STL	STEEL
CG	CORNER GUARD	FUT	FUTURE	OFF	OFFICE	STRUCT	STRUCTURAL
CI	CAST IRON	GA	Gauge	OP	OWNER FURNISH	SS	STAINLESS STEEL
CL	Ceiling	GALV	GALVANIZED	OSB	OWNER INSTALL	TB	TOWEL BAR
CLR	CLEAR	GB	GRAB BAR	OPNG	OPENING	TC	TOP OF CURB
COL	COLUMN	GL	GLASS	OPP	OPPOSITE	TEL	TELEPHONE
CONC	CONCRETE	GR	GRADE	OSB	ORIENTED STAND BOARD	TER	TERRAZZO
CORR	CORRIDOR	GYP	GYPSUM	PIC	PLASTIC IMPREGNATED CORK	TJ	TRUSS JOIST
CRPT	CARPET	GWB	GYPSUM WALL BOARD	PL	PLATE	TOD	TOP OF DECK
DEPT	DEPARTMENT	H	HIGH	PLAM	PLASTIC LAMINATE	TPD	TOILET PAPER DISPENSER
DF	DRINKING FOUNTAIN	HB	HOSE BIBB	PLYWD	PLYWOOD	TS	TUBE STEEL
DET	DETAIL	HC	ACCESSIBLE TO DISABLED	PR	PAIR	TV	TELEVISION
DIA	DIAMETER	HDWH	HARDWOOD	PRE-CAST	PRE-CAST	TYP	TYPICAL
DIM	DIMENSION	HT	HEIGHT	PT	PRESSURE TREATED	UL	UNDERWRITER LABORATORY
DN	DOWN	HM	HOLLOW METAL	PTD	PAINTED	UCON	UNLESS OTHERWISE NOTED
DS	DOWNSPOUT	INSUL	INSULATION	PTN	PARTITION	VEST	VESTIBULE
DWG	DRAWING	JAN	JANITOR	PVC	POLY VINYL CHLORIDE	VTR	VENT THROUGH ROOF
EA	EACH	LAV	LAVATORY	QT	QUARRY TILE	WC	WATER CLOSET
EL	ELEVATION	R	RISER	R	RADIUS	WD	WOOD
ELEC	ELECTRICAL	MAX	MAXIMUM	RAD	RADIUS	WP	WATERPROOF
ELEV	ELEVATOR	M/E	MECHANICAL AND ELECTRICAL	RD	ROOF DRAIN	WR	WATER RESISTANT
EP	ELECTRICAL PANELBOARD	MECH	MECHANICAL	REF	REFERENCE	WSCOT	WAINSCOT
EQ	EQUAL	MIN	MINIMUM	REFR	REFRIGERATOR	WT	WEIGHT
EQUIP	EQUIPMENT	MISC	MISCELLANEOUS	REINF	REINFORCED	(X)	REMOVE

DRAWING LEGEND

BUILDING SECTION

A

A501

SECTION NUMBER

SHEET NUMBER

EXTERIOR ELEVATION

B

A501

ELEVATION NUMBER

SHEET NUMBER

WALL SECTION

3

A501

SECTION NUMBER

SHEET NUMBER

DETAIL REFERENCE

3

A901

DETAIL NUMBER

SHEET NUMBER

INTERIOR ELEVATIONS

4

AXX

3

2

ELEVATION NUMBER

SHEET NUMBER

NEW CONSTRUCTION

ITEMS TO BE REMOVED

EXISTING ITEMS TO REMAIN

102A

DOOR NUMBER

GENERAL NOTES

1. ALL CONSTRUCTION TO BE PER 2009 IBC AND ALL APPLICABLE MECHANICAL, ELECTRICAL, FIRE CODES (AS AMENDED BY THE CITY & BOROUGH OF JUNEAU, TITLE 19) AND THE JUNEAU ZONING/LAND USE REQUIREMENTS. THE CONSTRUCTION WILL BE IN ACCORDANCE WITH THE ADAAG (AMERICANS WITH DISABILITIES ACT - ACCESSIBILITY GUIDELINES).

2. CONTRACTOR TO VERIFY ALL EXISTING CONDITIONS AND DIMENSIONS BEFORE BEGINNING WORK AND TO NOTIFY THE OWNER'S REPRESENTATIVE AS TO ANY DISCREPANCIES.

3. DISPOSAL OF DEMOLITION MATERIAL (NOT TO BE SALVAGED) IS THE RESPONSIBILITY OF THE CONTRACTOR. BURNING AND DISPOSAL OF DEMOLITION MATERIAL WILL NOT BE ALLOWED ON THE PROJECT SITE.

4. THESE DRAWINGS ARE FOR USE ON THE JPD & FTC SECURITY ACCESS GATES INSTALLATION PROJECT ONLY. THEY ARE NOT TO BE REUSED IN WHOLE OR IN PART ON ANY OTHER PROJECT WITHOUT WRITTEN PERMISSION FROM A.E. ROGERS ARCHITECTS, LLC.

BID SET

JULY 22, 2013

IBC ARCHITECTURAL CODE REVIEW NOT APPLICABLE	BUILDING CODE SUMMARY NOTE: ALL CODES AS AMENDED BY THE STATE OF ALASKA & THE CITY & BOROUGH OF JUNEAU INTERNATIONAL BUILDING CODE, 2009 EDITION INTERNATIONAL MECHANICAL CODE, 2009 EDITION INTERNATIONAL FIRE CODE, 2009 EDITION UNIFORM PLUMBING CODE, 2009 EDITION NEC, 2011 NFPA 13, 2009 EDITION NFPA 72, 2009 EDITION (FIRE ALARM) NFPA 101, 2009 EDITION NFPA 99, 2009 EDITION AMERICANS WITH DISABILITIES ACT ACCESSIBILITY GUIDELINES (ADAAG)
---	--

CBJ PROJECT NO. E14-018

CODE INFORMATION
SYMBOLS &
ABBREVIATIONS

STATE OF ALASKA

49th

Alan E. Rogers

No. A-5582

REGISTERED PROFESSIONAL ARCHITECT

7-22-2013

A0



EXTERIOR VIEW OF EXISTING GATE



INTERIOR VIEW OF EXISTING GATE



EXIST. EXTERIOR CONTROLS



EXIST. SLIDING GATE OPERATOR



EXIST. SLIDING GATE OPERATOR

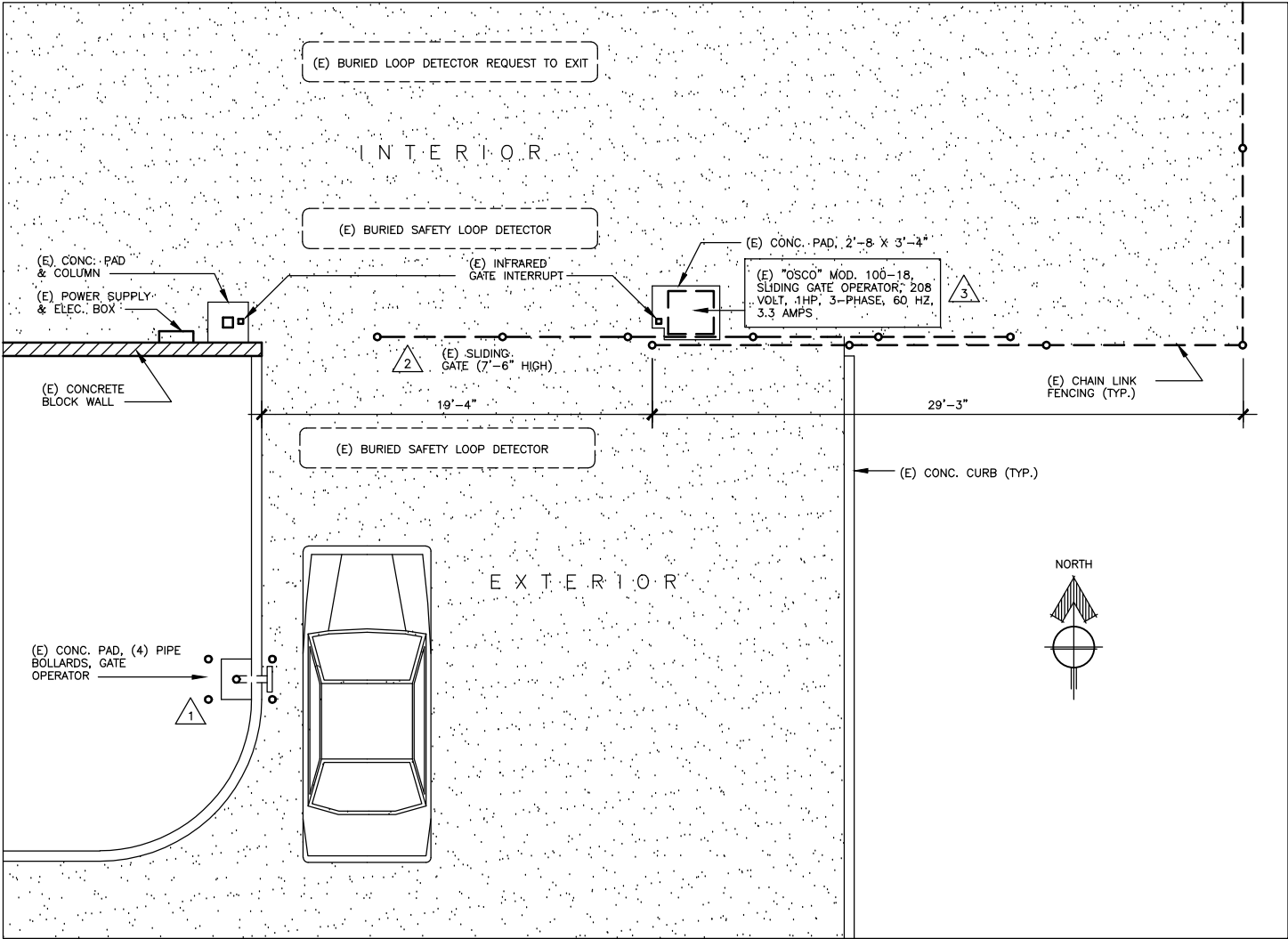
DEMOLITION NOTES

- 1

REMOVE (E) METAL CONDUIT, WIRING AND GATE CONTROLS TO EXTENT REQUIRED BY NEW WORK.
- 2

REMOVE (E) CHAIN LINK SLIDING GATE & ASSOCIATED ACCESSORIES.
- 3

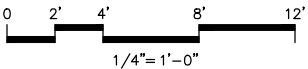
REMOVE (E) SLIDING GATE OPERATOR. CAP POWER & OPERATION WIRING FOR REUSE WITH NEW WORK.



A JPD GATE DEMOLITION PLAN

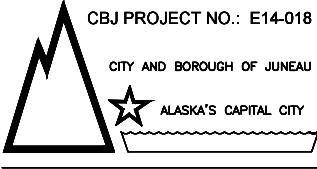
SCALE: 1/4" = 1'-0" D:\CAD\1201

PAVING
(E) EXISTING



A.E. Rogers
ARCHITECTS, LLC

P.O. Box 34401 • Juneau, Alaska 99803
Tele 907.789.7589 • www.aerogers.com



CBJ Bldg. Permit No. _____

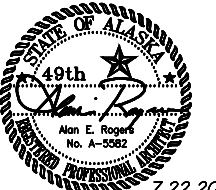
CONSTRUCTION DOCUMENTS
JPD & FTC - SECURITY
ACCESS GATE INSTALLATION
6255 Alaway Avenue - 2601 Sherwood Lane
Juneau, Alaska 99801

Number	Date	By	Description of Revisions

Sheet Title
EXIST. GATE PHOTOS
JPD GATE DEMO PLAN

Scale AS SHOWN (HALF SCALE AT 11X17)
Designed AER Drawn AER
Date JULY 22, 2013 Checked AER
Approved By AER Job Number 1201

Sheet Number



CONSTRUCTION DOCUMENTS

JPD & FTC - SECURITY
ACCESS GATE INSTALLATION

6255 Alaway Avenue - 2601 Sherwood Lane
Juneau, Alaska 99801

6255 Alaway Avenue - 2601 Sherwood Lane
Juneau, Alaska 99801

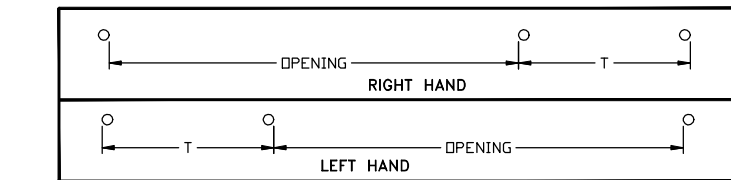
[illegible]

Sheet Title
JPD NEW GATE PLAN

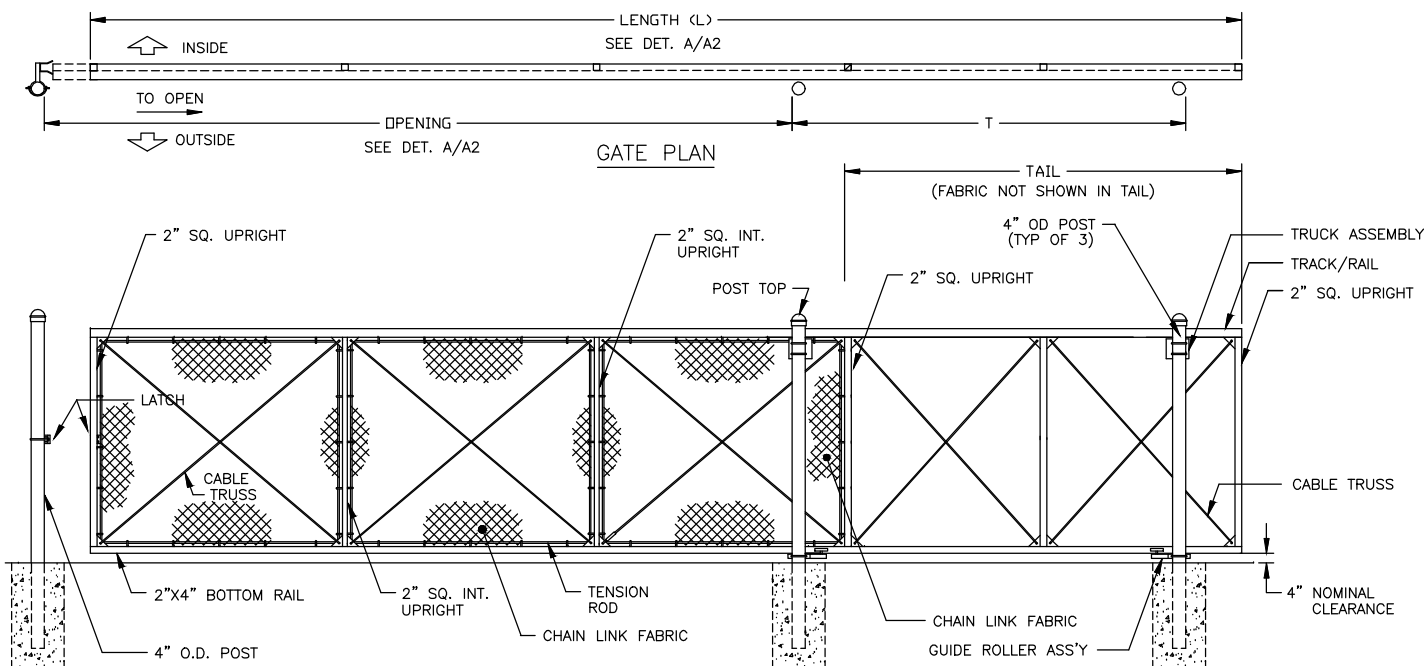
Scale	AS SHOWN (HALF SCALE AT 11X17)
Designed AER	Drawn AER
Date JULY 22, 2013	Checked AER
Approved By AER	Job Number 1201

Sheet Number

A2 OF 6

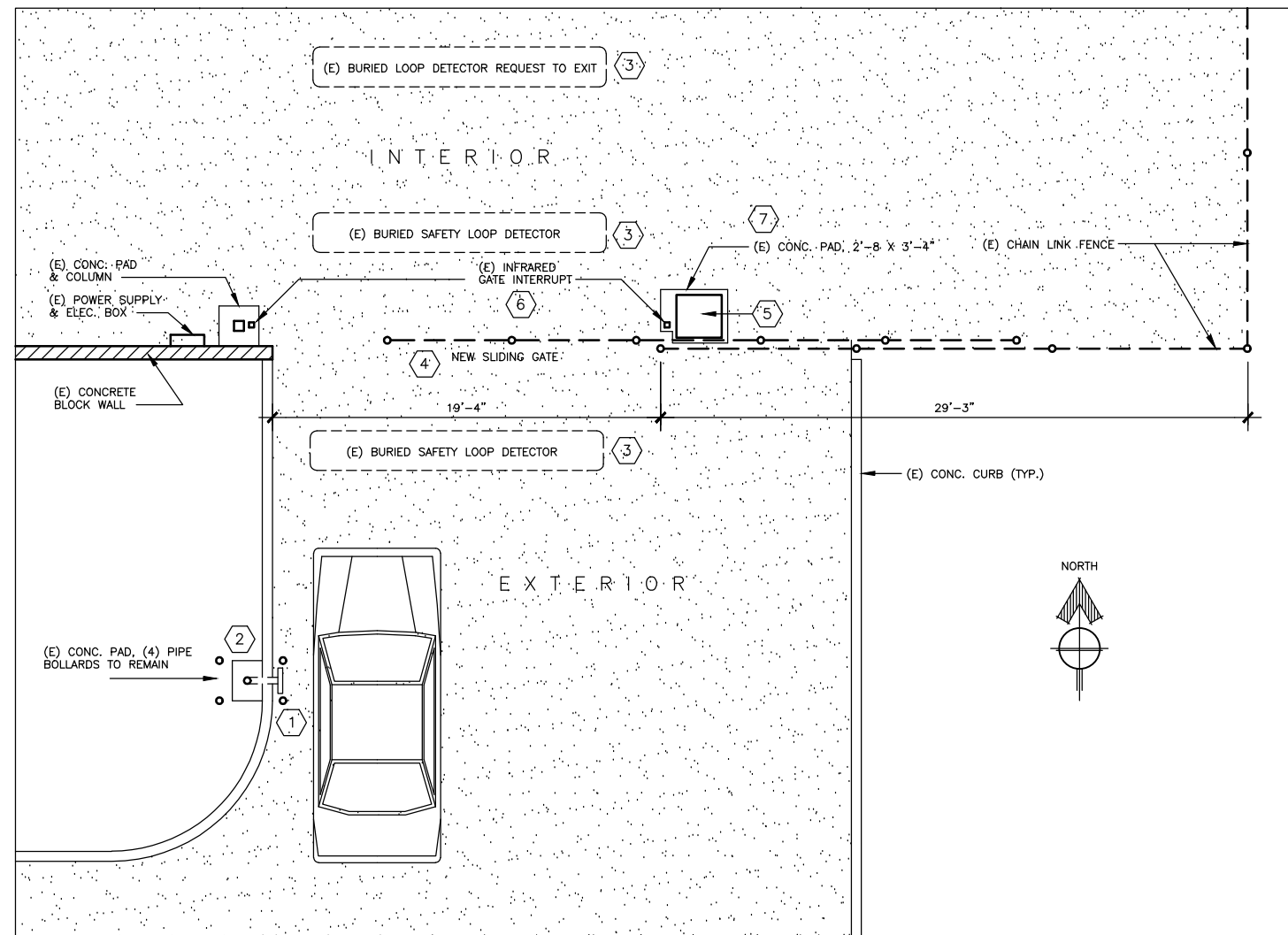


A SLIDING GATE SECTION
SCALE: NTS D:\CAD\120



GATE ELEVATION (TYP.)
SCALE: NTS D:\CAD\1201

NOTE: FOOTING WIDTH TO BE (4)X POST WIDTH, MIN. DEPTH TO BE 36" MIN.



B JPD NEW GATE PLAN
SCALE: 1/4" = 1'-0" D:\CAD\1201

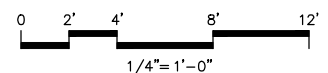
(E) EXISTING

1. INSTALL NEW SLIDING GATE CONTROLLER. REUSE EXISTING ELECTRICAL CONNECTIONS AND CONDUIT/PIPE SUPPORT.
2. PREPARE & PAINT EXISTING PIPE BOLLARDS. MATCH EXISTING COLOR.
3. REUSE EXISTING BURIED LOOP DETECTORS
4. SUPPLY AND INSTALL NEW SLIDING GATE. 7'-6" +/- GATE HEIGHT (VER.). MATCH EXISTING HEIGHT.
5. SUPPLY AND INSTALL NEW SLIDING GATE OPERATOR
6. REUSE EXISTING INFRARED GATE INTERRUPT SYSTEM
7. REUSE EXISTING CONCRETE PAD FOR NEW GATE OPERATOR (VERIFY WITH MFR.)

NOTES:

MAINTAIN EXISTING VIDEO SECURITY SYSTEM AND VOICE INTERCOM SYSTEM.

SUPPLY AND INSTALL NEW CONTROLS, DETECTION LOOPS AND INTERRUPTS PER SPECIFICATIONS SEC. 02821. REUSE EXISTING CONTROL WIRING/CONNECTIONS AS MUCH AS POSSIBLE.





EXTERIOR VIEW OF EXIST. GATE



EXTERIOR VIEW OF EXIST. GATE



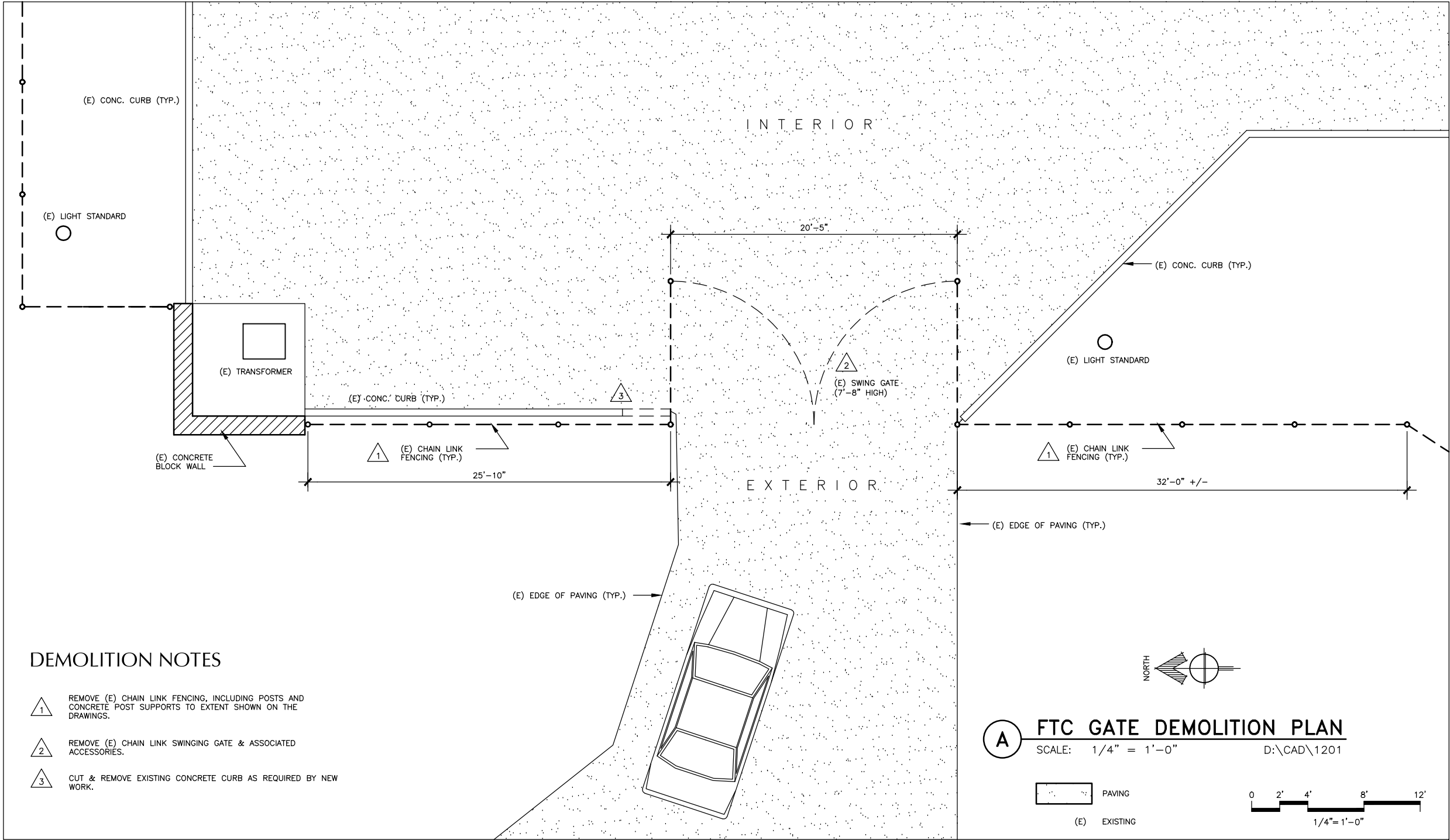
EXTERIOR VIEW OF EXIST. GATE



EXTERIOR VIEW OF EXIST. GATE



CBJ Bldg. Permit No. _____

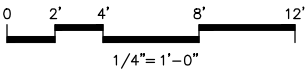
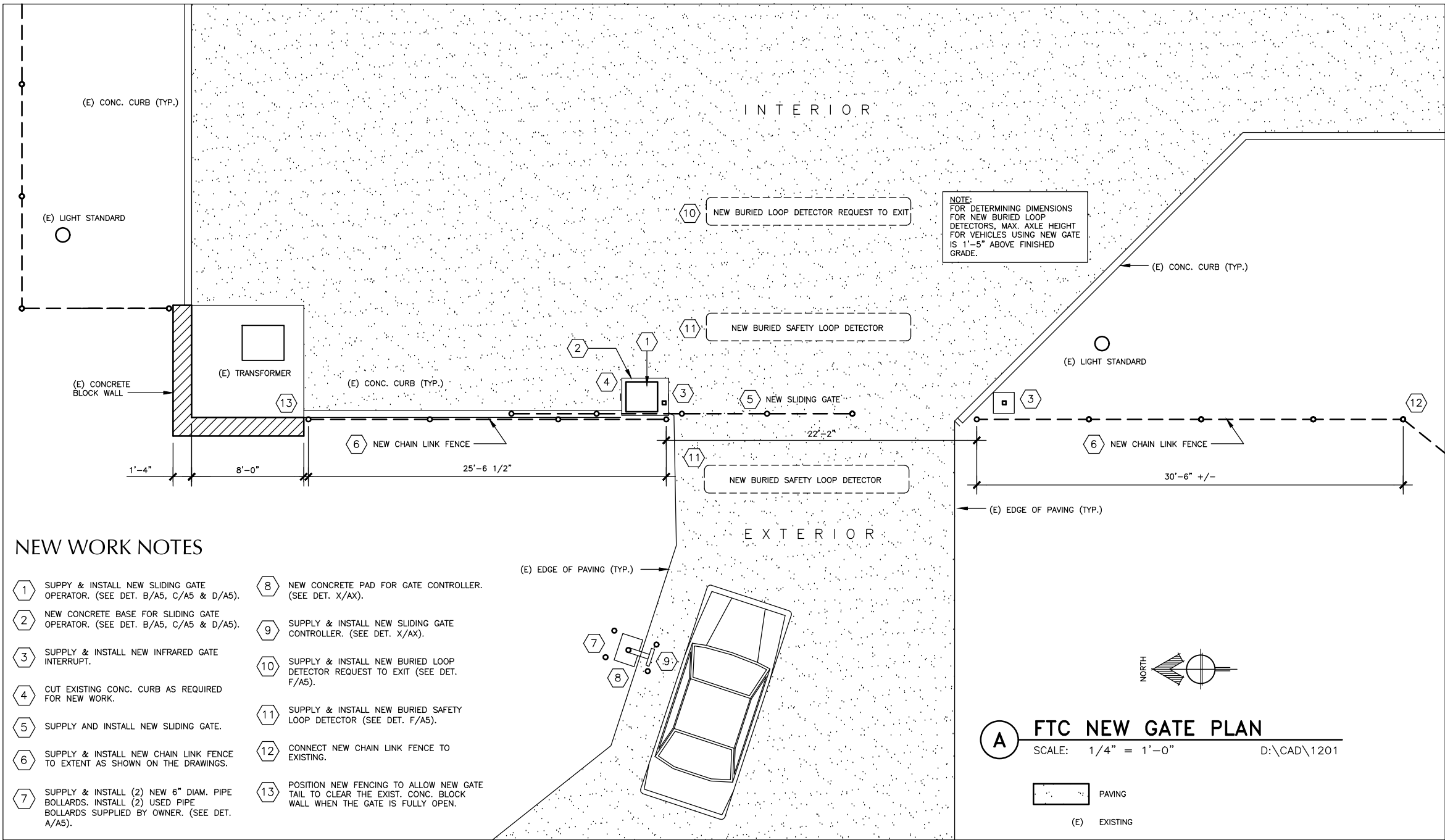


CONSTRUCTION DOCUMENTS
**JPD & FTC - SECURITY
ACCESS GATE INSTALLATION**
6255 Alaway Avenue - 2601 Sherwood Lane
Juneau, Alaska 99801

Number	Date	By	Description of Revisions
Sheet Title			
EXIST. GATE PHOTOS			
FTC GATE DEMO PLAN			
Scale AS SHOWN (HALF SCALE AT 11X17)			
Designed AER		Drawn AER	
Date JULY 22, 2013		Checked AER	
Approved By AER		Job Number 1201	



CONSTRUCTION DOCUMENTS
**JPD & FTC - SECURITY
ACCESS GATE INSTALLATION**
6255 Alaway Avenue - 2601 Sherwood Lane
Juneau, Alaska 99801



Number	Date	By	Description of Revisions

Sheet Title
FTC NEW GATE PLAN

Scale AS SHOWN (HALF SCALE AT 11X17)
Designed AER Drawn AER
Date JULY 22, 2013 Checked AER
Approved By AER Job Number 1201

Sheet Number



CONSTRUCTION DOCUMENTS
JPD & FTC - SECURITY
ACCESS GATE INSTALLATION
6255 Alaway Avenue - 2601 Sherwood Lane
Juneau, Alaska 99801

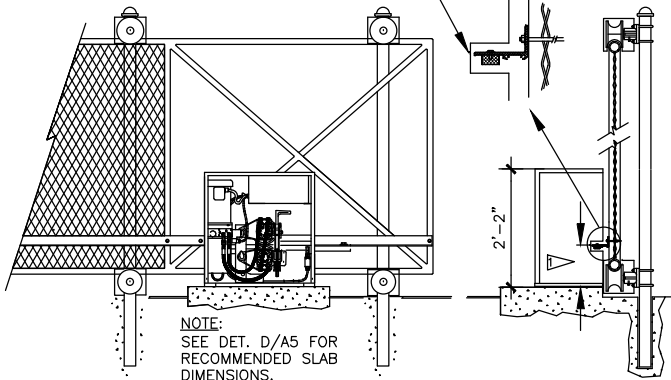
Number	Date	By	Description of Revisions
Sheet Title			
DETAILS			
Scale AS SHOWN (HALF SCALE AT 11X17)			
Designed AER		Drawn AER	
Date JULY 22, 2013		Checked AER	
Approved By AER		Job Number 1201	

NOTES:

DRIVE RAIL HEIGHT IS MARKED ON THE SIDE OF EACH CHASSIS.

COVERS MUST BE USED FOR PROTECTION ON ALL EXPOSED WHEELS AND/OR HARDWARE.

ALIGN TOP OF DRIVE RAIL WITH NOTCH



ELEVATION

SECTION

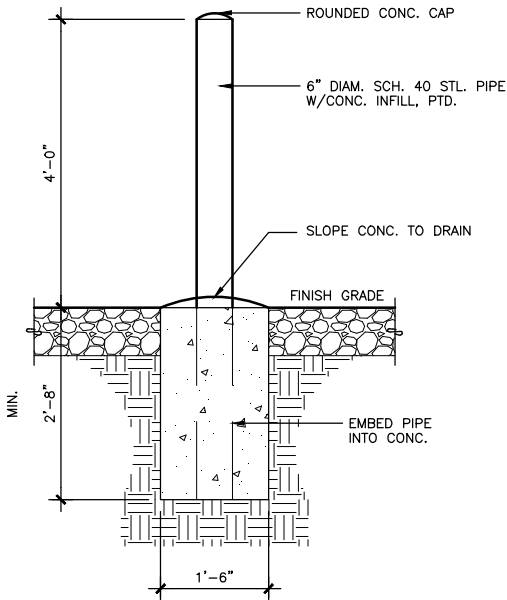
NOTES:

CONSULT FENCE CONTRACTOR OR RECOMMENDED CANTILEVER POST SPACING. 50% OF GATE OPENING GENERALLY PROVIDES SMOOTH OPERATION.

RIGHT HAND CANTILEVER GATE IS SHOWN IN HE FULLY CLOSED POSITION. OPERATOR COVER OMITTED FROM DETAIL. (DO NOT SCALE).

IT MAY BE NECESSARY TO SHIM DRIVE RAIL IF GATE PANEL IS "BOWED". RAIL MUST BE INSTALLED IN STRAIGHT LINE.

9-1/2" APPROXIMATE RAIL HEIGHT FROM PAD. FINAL ADJUSTMENT TO BE MADE PER NOTCH ON CHASSIS.

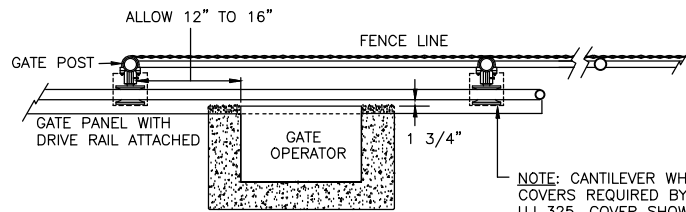


A BOLLARD DETAIL

SCALE: 3/4" = 1'-0" D:\CAD\1201

C SLIDE GATE OPERATOR

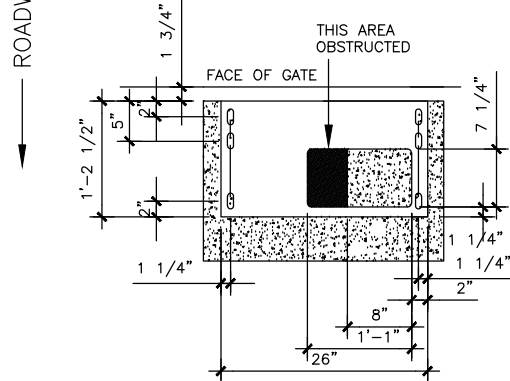
SCALE: NTS D:\CAD\1201



NOTES:

MINIMUM CONCRETE SLAB DIMENSIONS RECOMMENDED ARE: 30" WIDE, 20" FROM FRONT TO BACK AND 32" DEEP (BELOW FROST LINE).

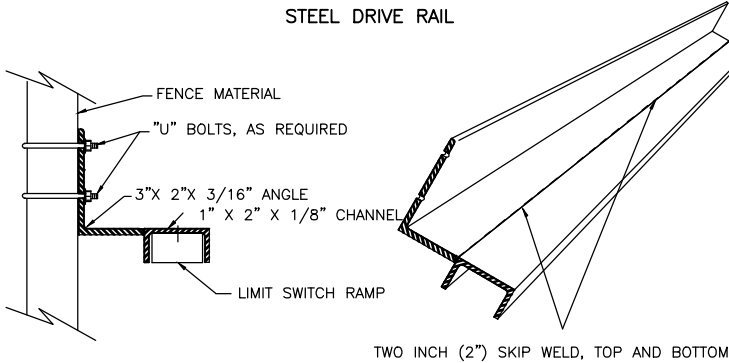
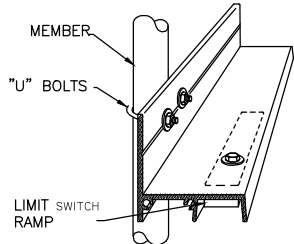
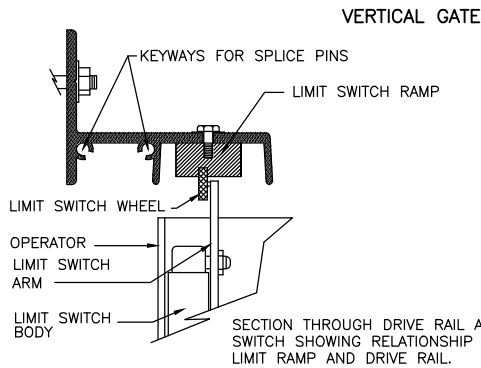
OPERATOR IS INSTALLED ON A CONCRETE PAD AND CONNECTED TO HE RIGHT HAND CANTILEVER GATE PANEL.. 4" POSTS RE SHOWN FOR GATE SUPPORT ND FENCE TERMINATION.



NOTE: CONTACT FENCE CONTRACTOR FOR EXACT SPACING ON CANTILEVER POSTS. 50% OF OPENING WIDTH GENERALLY PROVIDES A SMOOTH OPERATION.

D SLIDE GATE OPERATOR

SCALE: NTS D:\CAD\1201



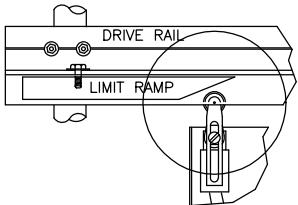
STEEL DRIVE RAIL

BI-DIRECTIONAL TRAFFIC SYSTEM WITH CONTROLLED ACCESS ENTRY (CARD READER, RADIO CONTROL, ETC.) AND FREE EXIT GATE IS CLOSED BY A "TIMER TO CLOSE". FOR A SINGLE DIRECTIONAL SYSTEM OMIT EITHER THE FREE EXIT LOOP OR THE ENTRY CONTROL DEVICES.

GATE STARTS TIMING TO CLOSE AS ALL LOOPS ARE CLEAR. TIMER S ADJUSTABLE FROM 1 TO 30 SECONDS.

TWO INCH (2") SKIP WELD, TOP AND BOTTOM

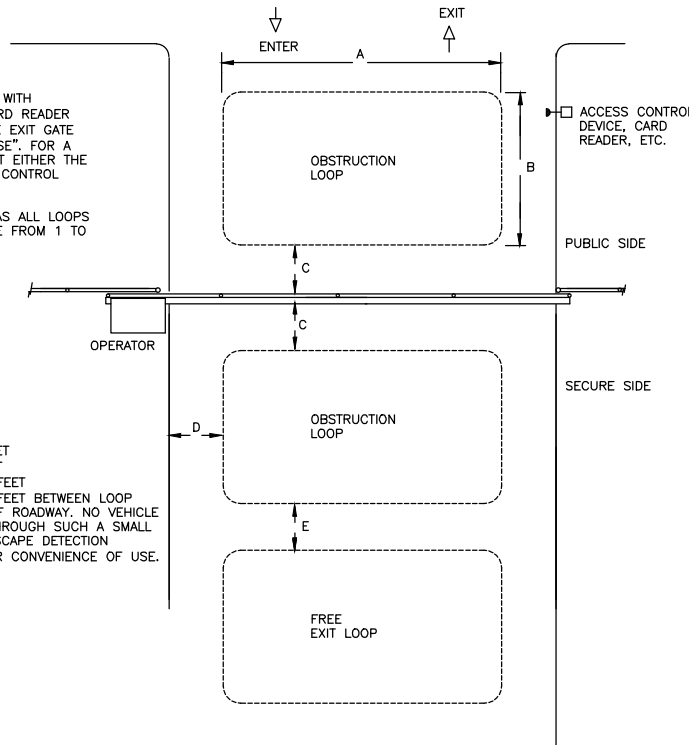
IN OPERATION, TAPERED ENDS, ALWAYS POINT SIDE VIEW OF LIMIT RAMP ND LIMIT SWITCH TOWARD THE OPERATOR DRIVE WHEELS.



E DRIVE RAIL DETAIL

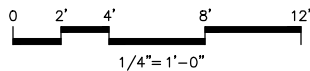
SCALE: NTS D:\CAD\1201

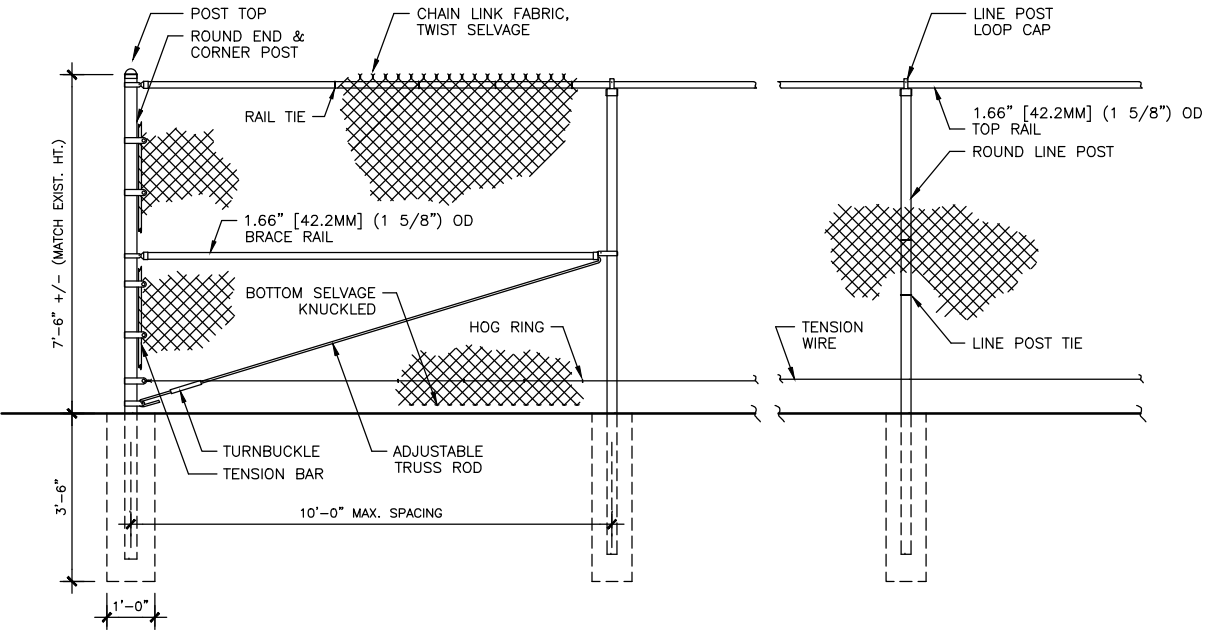
DIMENSION "A" = 8 TO 20 FEET
DIMENSION "B" = 6 TO 8 FEET
DIMENSION "C" = MAINTAIN 4 FEET
DIMENSION "D" = MAINTAIN 5 FEET BETWEEN LOOP AND EDGE OF ROADWAY. NO VEHICLE CAN PASS THROUGH SUCH A SMALL AREA AND ESCAPE DETECTION
DIMENSION "E" = LOCATED FOR CONVENIENCE OF USE.



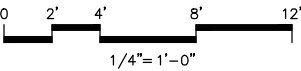
F EMBEDDED LOOP DETAIL

SCALE: NTS D:\CAD\1201





A FENCE ELEVATION (TYP.)
SCALE: NTS D:\CAD\1201



CBJ Bldg. Permit No. _____

CONSTRUCTION DOCUMENTS
**JPD & FTC - SECURITY
ACCESS GATE INSTALLATION**
6255 Alaway Avenue - 2601 Sherwood Lane
Juneau, Alaska 99801

Number	Date	By	Description of Revisions
Sheet Title			
DETAILS			
Scale AS SHOWN (HALF SCALE AT 11X17)			
Designed AER		Drawn AER	
Date JULY 22, 2013		Checked AER	
Approved By AER		Job Number 1201	