



for the

Centennial Hall Generator Installation

Contract No. E13-248

CURRENT DEADLINE FOR BIDS:
August 14, 2013

ISSUED BY: City and Borough of Juneau
ENGINEERING DEPARTMENT
155 South Seward Street
Juneau, Alaska 99801

DATE ADDENDUM ISSUED: August 9, 2013

The following items of the contract are modified as herein indicated. All other items remain the same. This addendum has been issued and is posted online. Please refer to the CBJ Engineering Contracts Division webpage at: http://www.iuneau.org/engineering_files/contracts/Contracts.php

Item No. 1: SHEET E100 – SITE PLAN – GENERATOR SINGLE LINE DIAGRAM. **Delete** in its entirety and **replace** with the attached SHEET E100 SITE PLAN – GENERATOR SINGLE LINE DIAGRAM, Labeled Addendum No. 4.

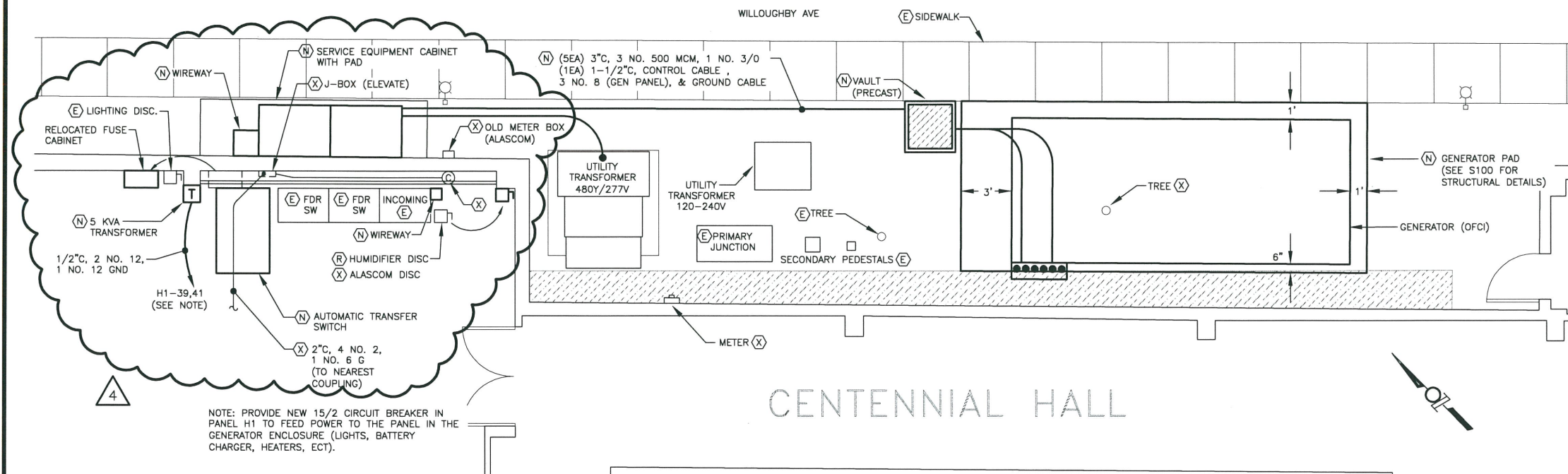
Item No. 2: SHEET E200 – DETAILS. **Delete** in its entirety and **replace** with the attached SHEET E200 – DETAILS, Labeled Addendum No. 4.

By:

Jennifer Mannix,
Contract Administrator

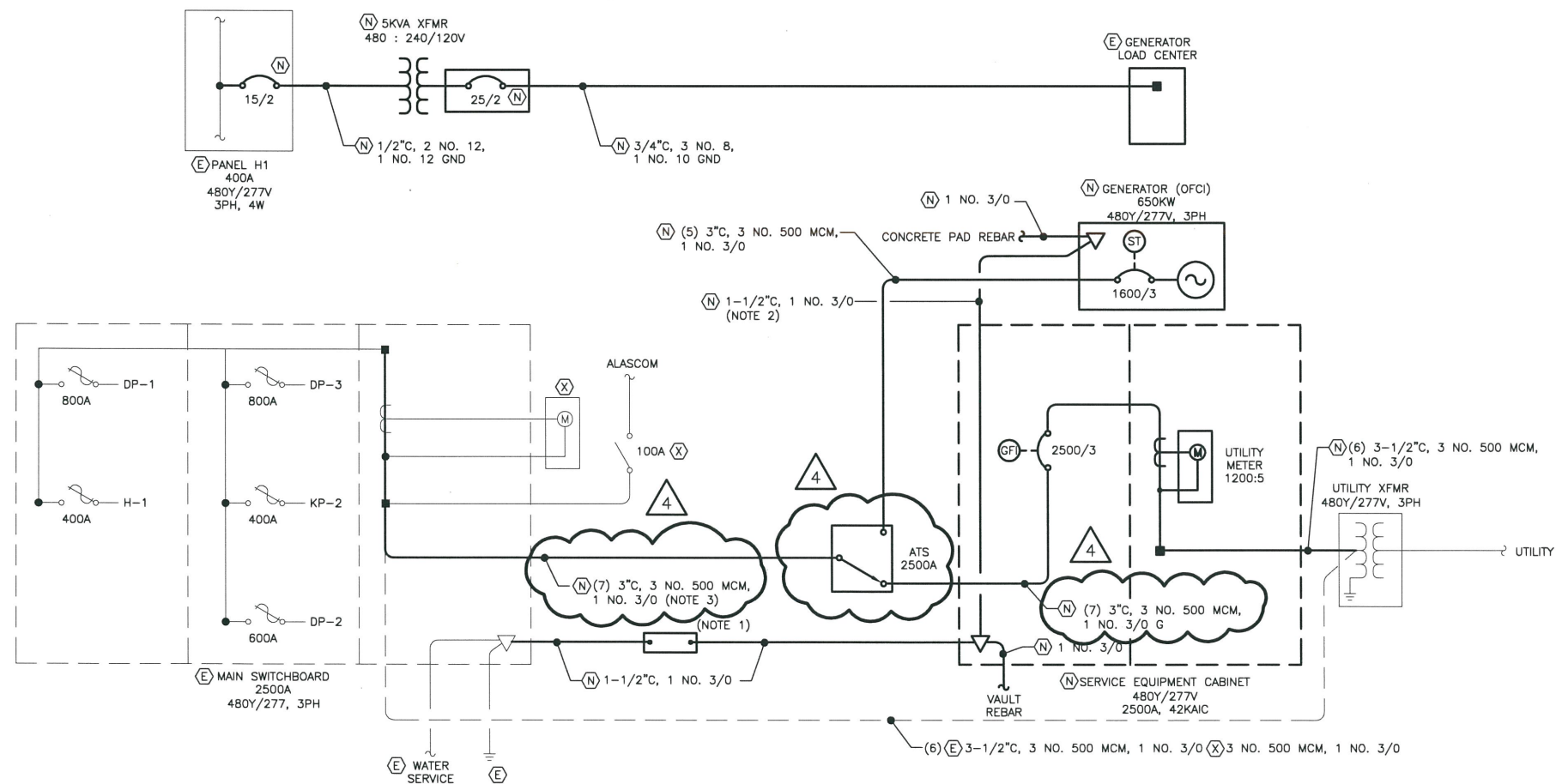
Total number of pages contained within this Addendum: 3

Aug 09, 2013 - 1:40pm
F:\Projects\118 City & Borough of Juneau\Bidding\Drawings\E100.dwg (Layout1 tab)



1 SITE PLAN - CENTENNIAL HALL GENERATOR

SCALE: 0' 2' 4' 8'



NOTES:

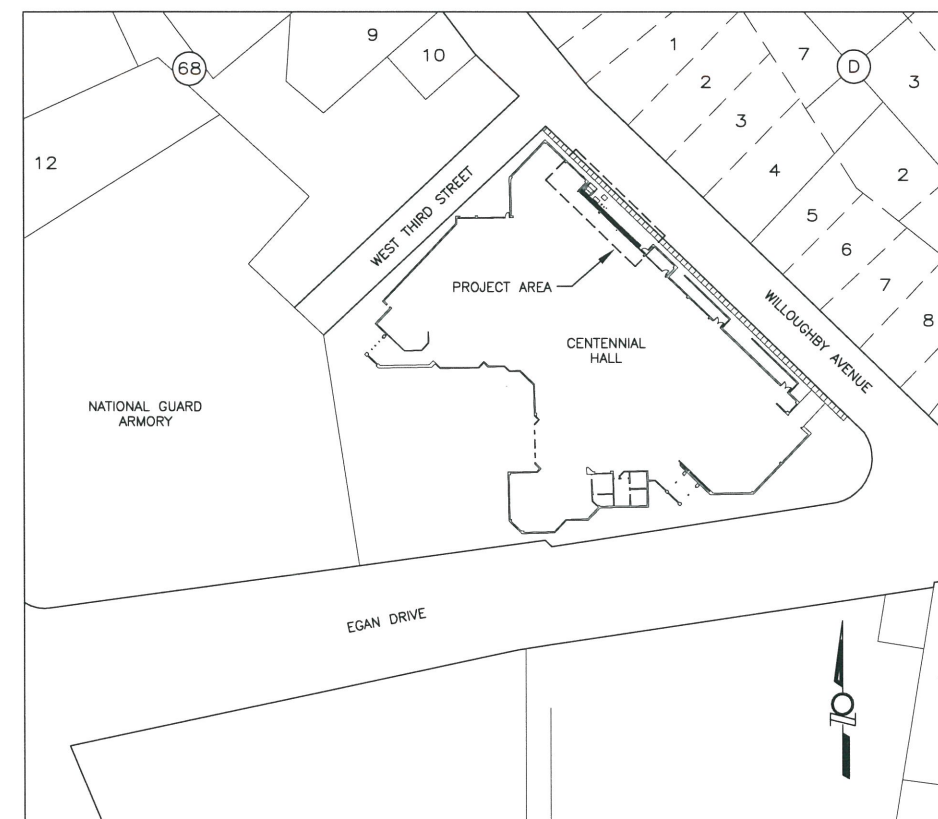
1. PROVIDE NEW GROUND BUS ON INSULATORS MOUNTED TO WALL ADJACENT TO THE EXISTING MAIN SWITCHBOARD. PROVIDE BONDING TO NEAREST STRUCTURAL STEEL WITH NO. 3/0 COPPER.
2. PROVIDE CONTROL CABLE (12 NO. 16) USING CONDUCTORS AS REQUIRED TO CONNECT THE RUN COMMAND SIGNAL FROM THE ATS TO THE GENERATOR CONTROLS. ROUTE IN CONDUIT WITH THE GROUND CONDUCTOR AND GENERATOR PANEL POWER CONDUCTORS.
3. WIREWAY MAY BE USED FOR PART OR ALL OF THIS CIRCUIT. MINIMUM DIMENSION = 8"x8". ADJUST TO COMPLY WITH NEC ARTICLE 314. OPTION: CABLE TRAY MAY BE USED, 24"W, MIN.

2 SINGLE LINE DIAGRAM - GENERATOR & SERVICE ENTRANCE

NO SCALE

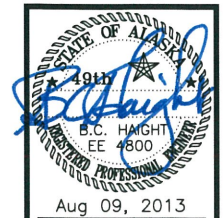
LEGEND

ABBREVIATIONS:	
(N)	NEW
(E)	EXISTING TO BE RETAINED
(R)	RELOCATE EXISTING
(X)	REMOVE EXISTING
GFI	GROUND FAULT INTERRUPT
ST	SHUNT TRIP OPERATOR
OFCI	OWNER FURNISHED, CONTRACTOR INSTALLED
ATS	AUTOMATIC TRANSFER SWITCH
LIGHTING:	
	EXTERIOR POLE MOUNTED LUMINAIRE
POWER:	
	PANELBOARD
	CIRCUIT BREAKER
	SWITCH OR DISCONNECT
	TRANSFORMER



3 SITE PLAN - DOWNTOWN JUNEAU

SCALE: 0' 32' 64' 128'



HAIGHT & ASSOCIATES
CONSULTING ELECTRICAL ENGINEERS

526 Main Street
Juneau, Alaska 99801
(907) 586-9788

CITY AND BOROUGH OF JUNEAU
CENTENNIAL HALL GENERATOR
JUNEAU, ALASKA

SITE PLAN - GENERATOR
SINGLE LINE DIAGRAM

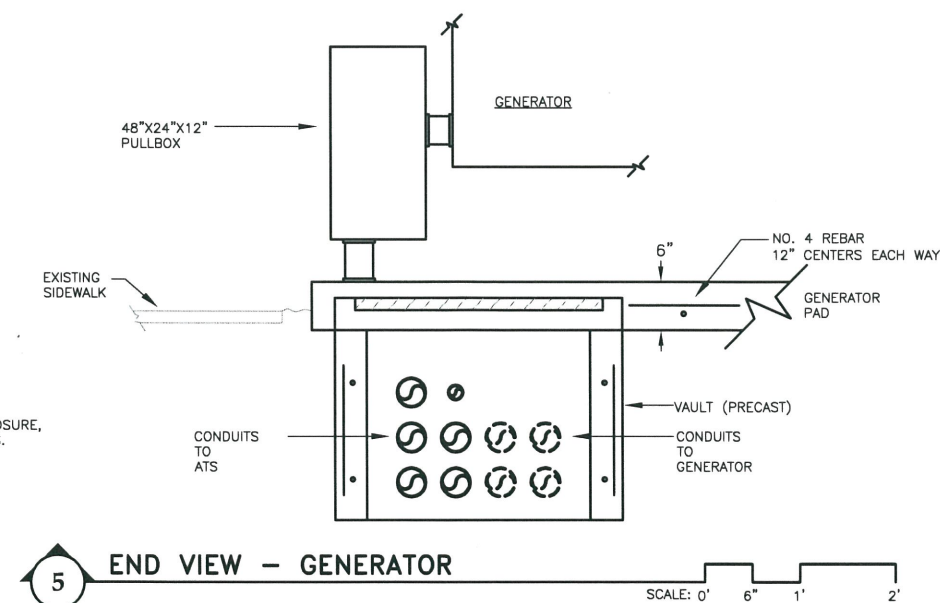
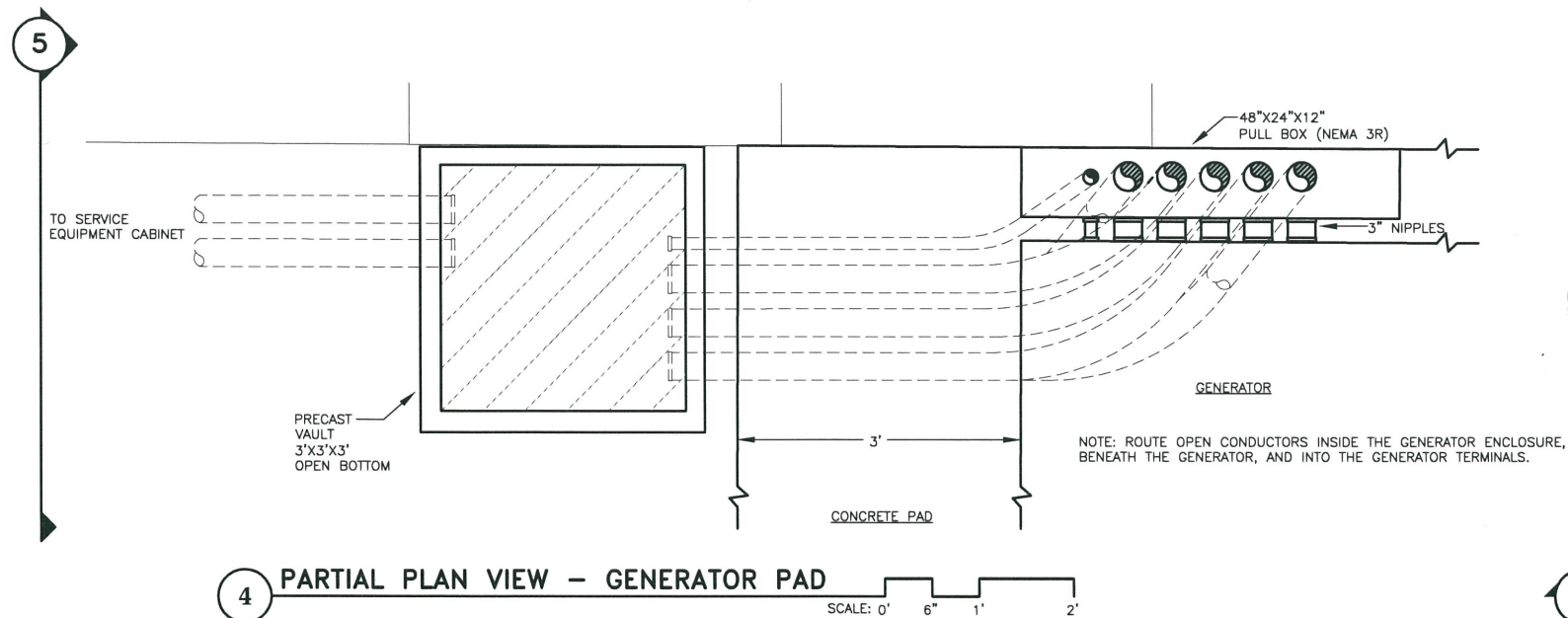
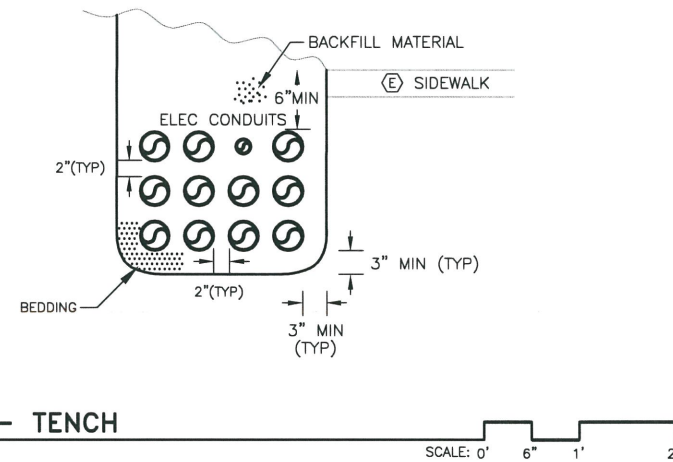
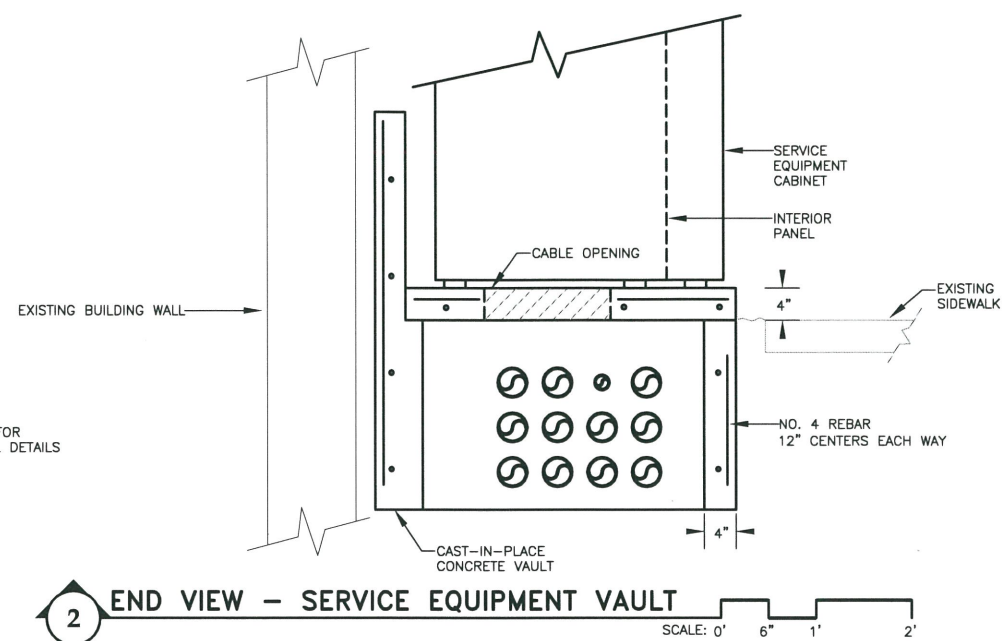
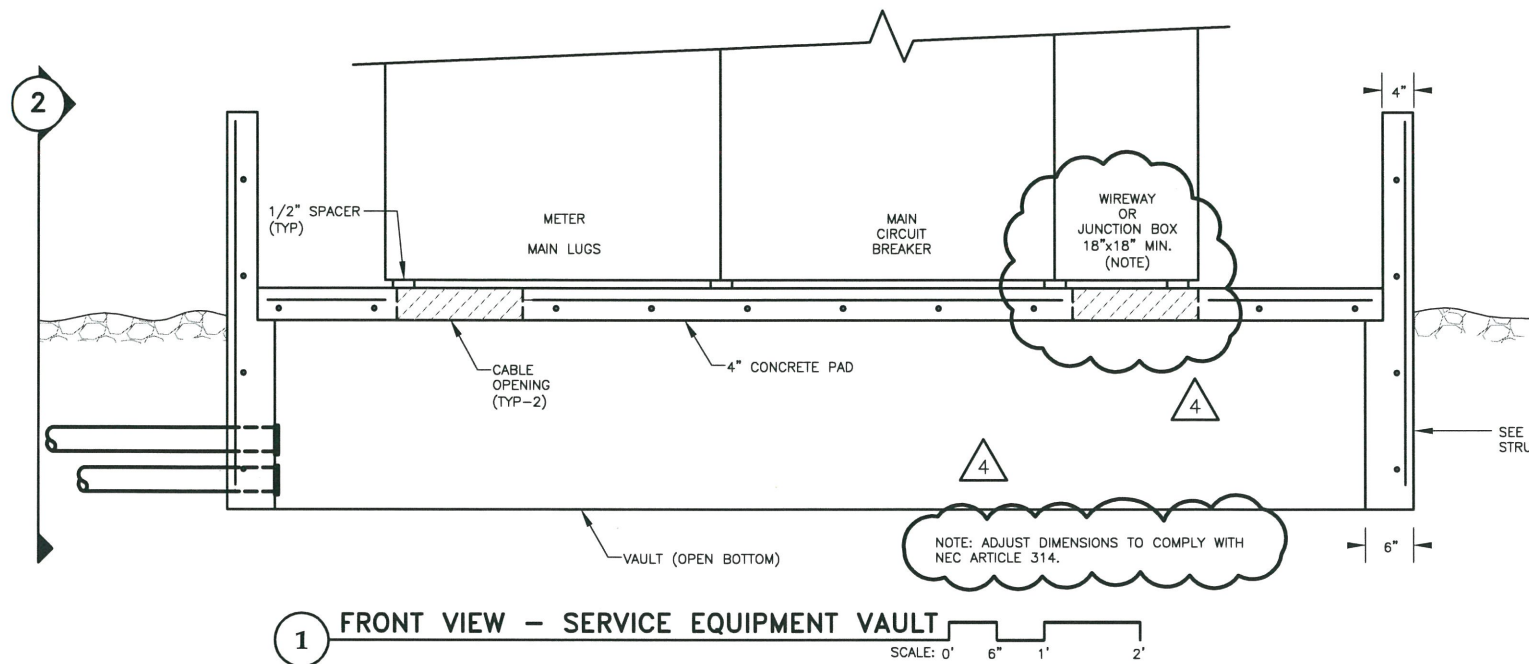
REVISION DESCRIPTION	DATE
ADDENDUM NO. 4	8/9/13

SHEET NUMBER

E100

SCALE: AS NOTED
DATE: MARCH 2013

Aug 09, 2013 - 1:33pm
F:\Projects\118 City & Borough of Juneau\113 Centennial Hall Generator\Bidding\Drawings\E200.dwg (Layout tab)



REVISION DESCRIPTION	DATE
ADDENDUM NO. 4	8/9/13