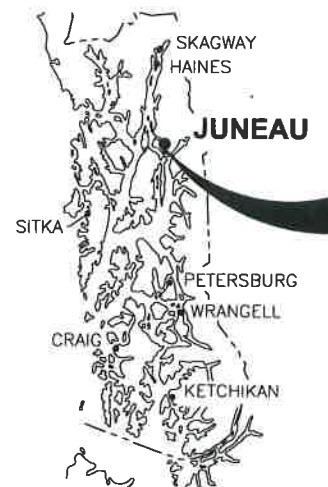


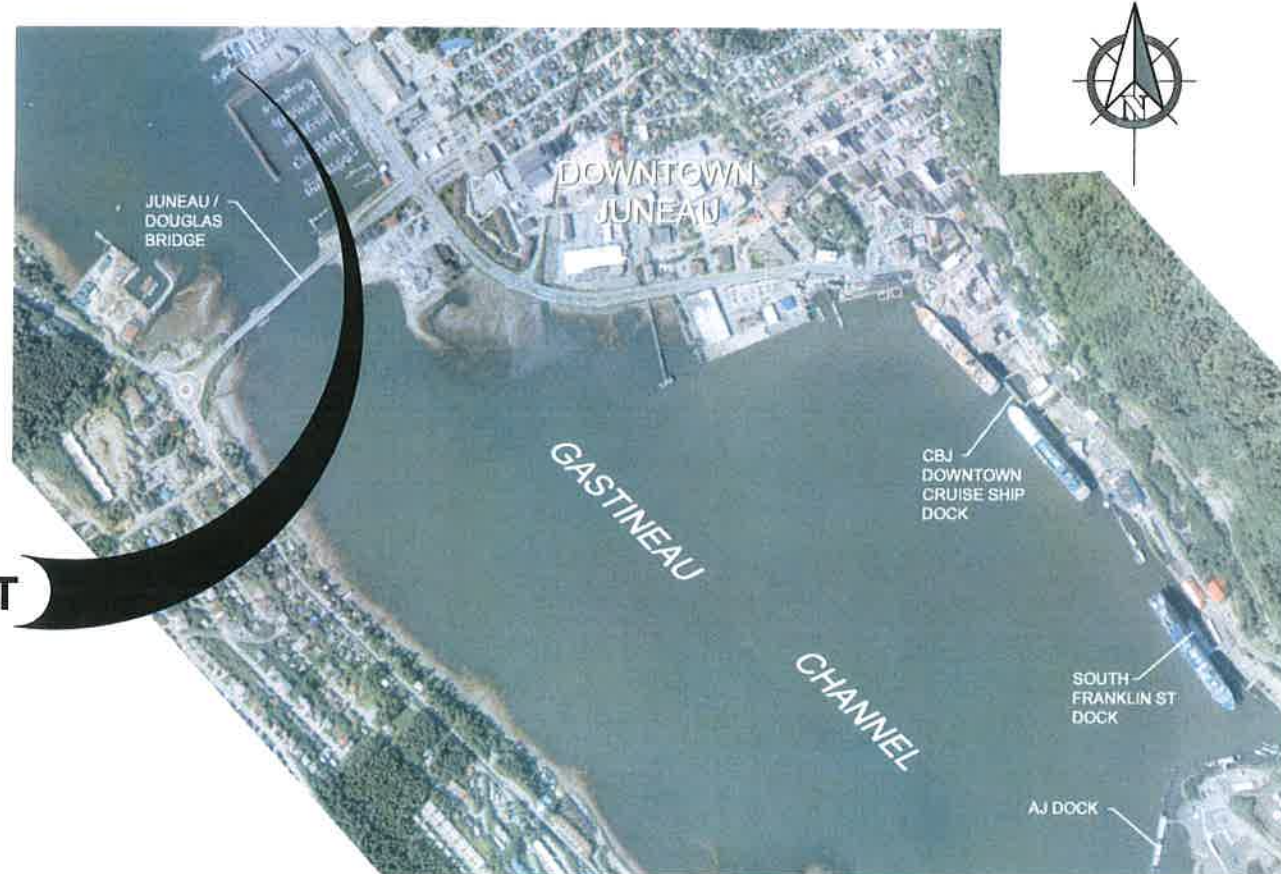
# CBJ FISHERIES TERMINAL DOCK REPLACEMENT

CITY & BOROUGH OF JUNEAU, ALASKA  
DOCKS & HARBORS

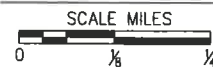
CBJ CONTRACT NO. DH13-438



THIS PROJECT



VICINITY MAP



## DRAWING INDEX

SHEET NO.	TITLE
1.01	TITLE SHEET, VICINITY MAP AND DRAWING INDEX
1.02	OVERALL SITE PLAN
1.03	DOCK & GANGWAY PLAN AND PROFILE
1.04	DOCK & ABUTMENT DETAILS
1.05	TYPICAL DETAILS
1.06	TYPICAL DETAILS

TIDAL DATA	ELEV. ( FT. )
EXTREME HIGH WATER (EHW)	+23.0'
HIGH TIDE LINE (HTL)	+20.8'
MEAN HIGHER HIGH WATER (MHHW)	+16.4'
MEAN HIGH WATER (MHW)	+15.4'
MEAN LOWER LOW WATER (MLLW)	0.0'
EXTREME LOW WATER (ELW)	-5.0'



REVISIONS					
REV.	DATE	DESCRIPTION	DWN.	CKD.	APP.



9360 Glacier Highway, Ste. 100  
Juneau, Alaska 99801  
Phone: 907-586-2093  
Fax: 907-586-2099  
www.pndengineers.com

DESIGN: MS CHECKED: JLD  
DRAWN: WRB APPROVED: CRS

SCALE: AS SHOWN

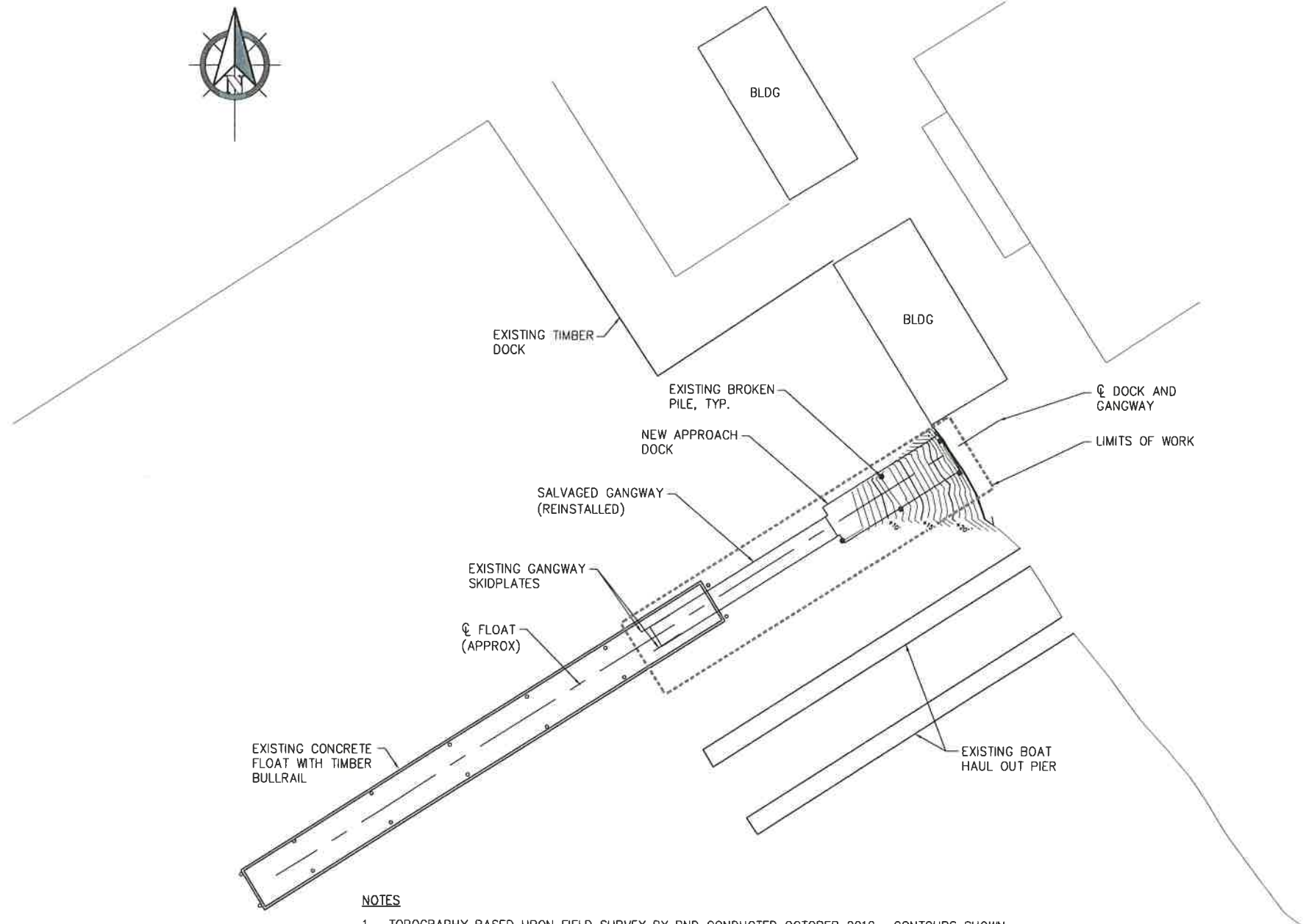


CITY & BOROUGH OF JUNEAU, ALASKA  
FISHERIES TERMINAL DOCK REPLACEMENT  
CONTRACT NO. DH13-438

SHEET TITLE:  
TITLE SHEET, VICINITY MAP  
AND DRAWING INDEX

PN&D PROJECT NO.: 122075 DWG. FILE:

1.01  
SHEET  
1 OF 6

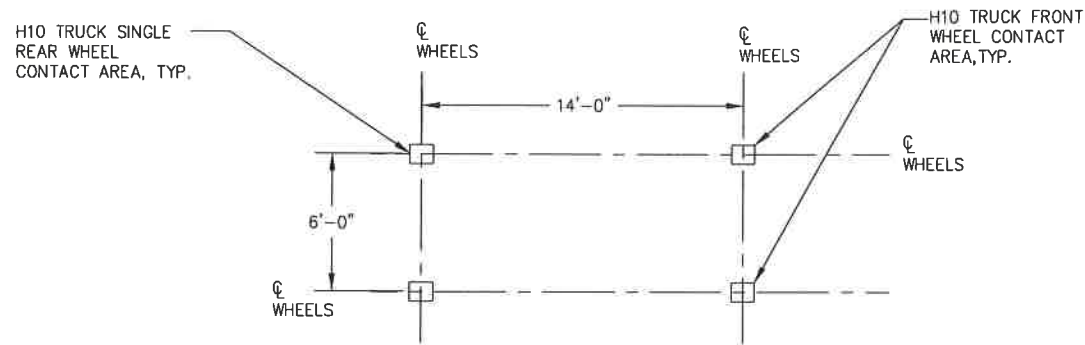


**STRUCTURAL GENERAL NOTES**  
(THESE NOTES SUPPLEMENT THE TECHNICAL SPECIFICATIONS)

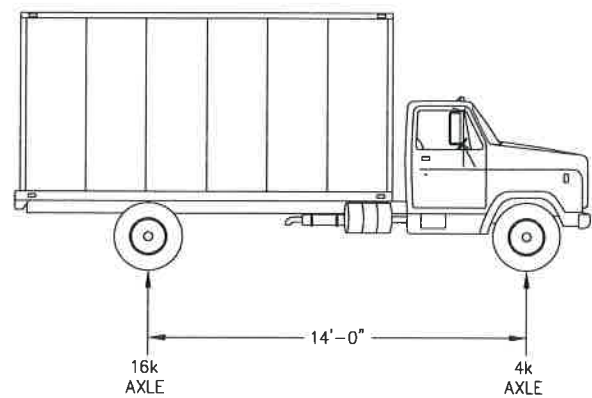
**DESIGN PARAMETERS**

DOCK LIVE LOAD: AASHTO H10 TRUCK (2 MONTH DURATION, Cd= 1.15)

DOCK SNOW LOAD: 50 PSF SNOW LOAD PER CBJ CODE



**H10 TRUCK WHEEL DISTRIBUTION LAYOUT**



**H10 TRUCK ELEVATION**

**NOTES**

1. TOPOGRAPHY BASED UPON FIELD SURVEY BY PND CONDUCTED OCTOBER 2012. CONTOURS SHOWN AT 1' INTERVALS.
2. HORIZONTAL CONTROL ESTABLISHED ON LOCAL COORDINATE SYSTEM
3. VERTICAL CONTROL ESTABLISHED ON MLLW = 0.0 DATUM WITH PREDICTED NOAA TIDES AND SURVEY TIDAL OBSERVATIONS 10/11/12
4. CONTRACTOR TO ESTABLISH BEST FIT  $\phi$  OF EXISTING FLOAT. CENTERLINE OF SALVAGED GANGWAY AND NEW DOCK SHALL ALIGN W/ ESTABLISHED  $\phi$  OF EXISTING FLOAT.

**OVERALL SITE PLAN**



REVISIONS					
REV.	DATE	DESCRIPTION	DWN.	CKD.	APP.



9360 Glacier Highway, Ste. 100  
Juneau, Alaska 99801  
Phone: 907-586-2093  
Fax: 907-586-2099  
www.pndengineers.com

DESIGN: MS CHECKED: JLD  
DRAWN: WRB APPROVED: CRS

SCALE: AS SHOWN



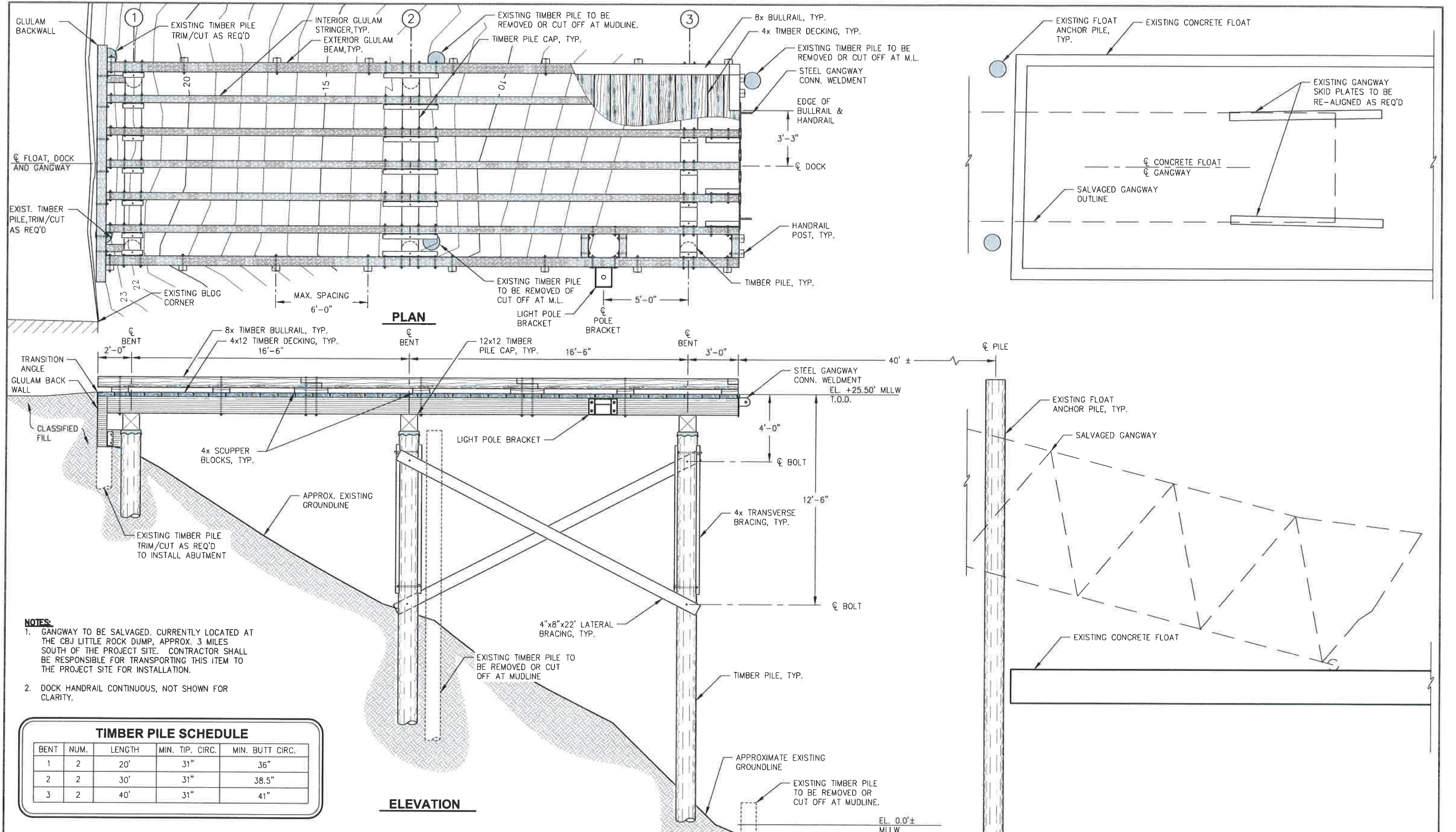
**CITY & BOROUGH OF JUNEAU, ALASKA**  
**FISHERIES TERMINAL DOCK REPLACEMENT**  
CONTRACT NO. DH13-438

SHEET TITLE:  
**OVERALL SITE PLAN**

PN&D PROJECT NO.: 122075 DWG. FILE:

**1.02**  
SHEET  
2 OF 6





- NOTES:**
- GANGWAY TO BE SALVAGED. CURRENTLY LOCATED AT THE CBJ LITTLE ROCK DUMP, APPROX. 3 MILES SOUTH OF THE PROJECT SITE. CONTRACTOR SHALL BE RESPONSIBLE FOR TRANSPORTING THIS ITEM TO THE PROJECT SITE FOR INSTALLATION.
  - DOCK HANDRAIL CONTINUOUS, NOT SHOWN FOR CLARITY.

TIMBER PILE SCHEDULE				
BENT	NUM.	LENGTH	MIN. TIP. CIRC.	MIN. BUTT. CIRC.
1	2	20'	31"	36"
2	2	30'	31"	38.5"
3	2	40'	31"	41"

REVISIONS					
REV.	DATE	DESCRIPTION	DWN.	CKD.	APP.

**P N D**  
ENGINEERS, INC.

9360 Glacier Highway, Ste. 100  
Juneau, Alaska 99801  
Phone: 907-586-2093  
Fax: 907-586-2099  
www.pndengineers.com



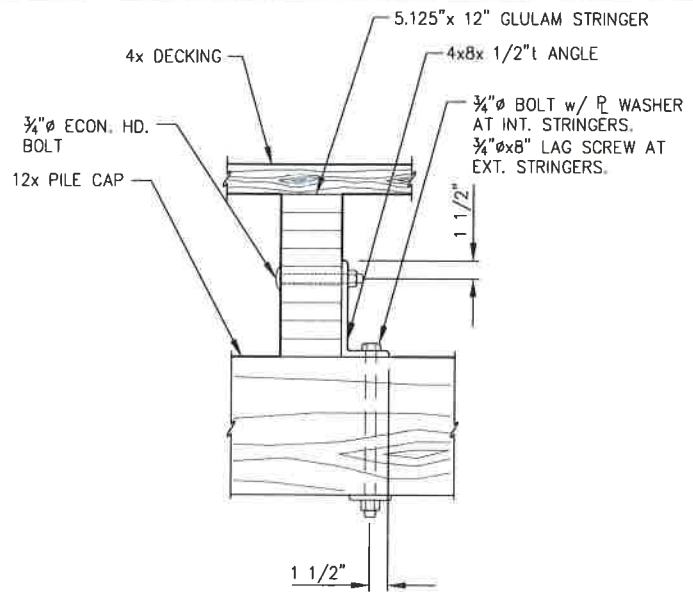
**CITY & BOROUGH OF JUNEAU, ALASKA**  
**FISHERIES TERMINAL DOCK REPLACEMENT**  
CONTRACT NO. DH13-438

SHEET TITLE: **DOCK & GANGWAY PLAN AND PROFILE**

PN&D PROJECT NO.: 122075    DWG. FILE:

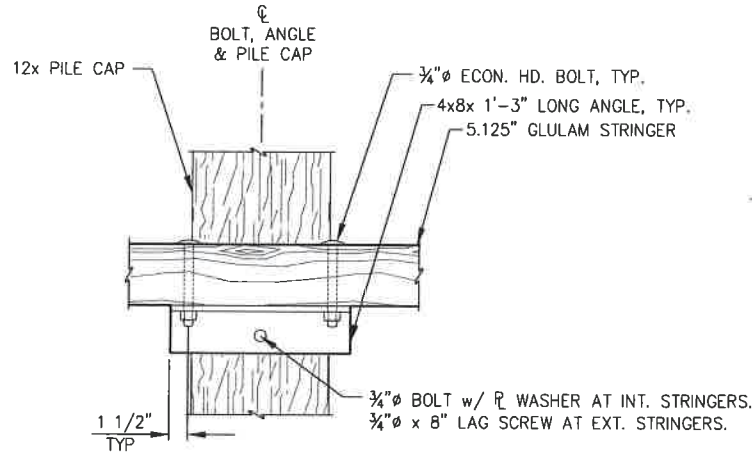
N:\12XXX\122075 Juneau Fisheries Terminal\Drawings\1.03\_1.05 Details.dwg, 3/12/2013 9:19:56 AM



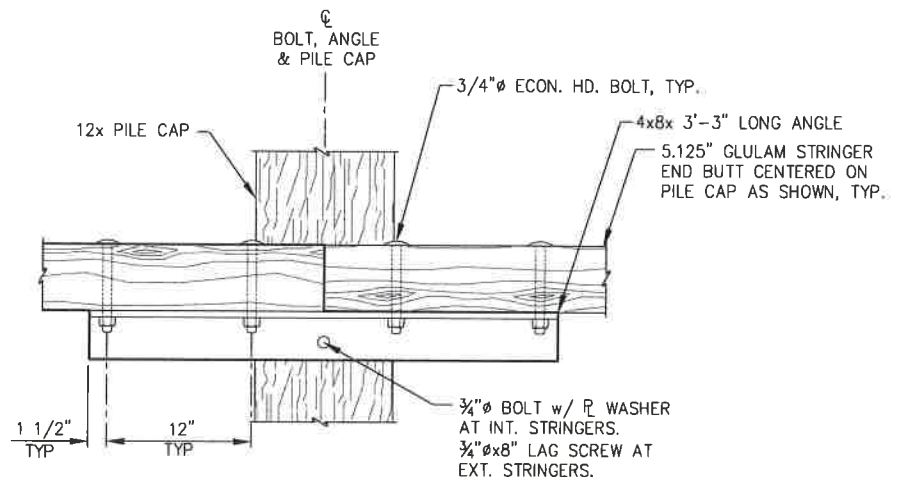


**CONNECTION SECTION**

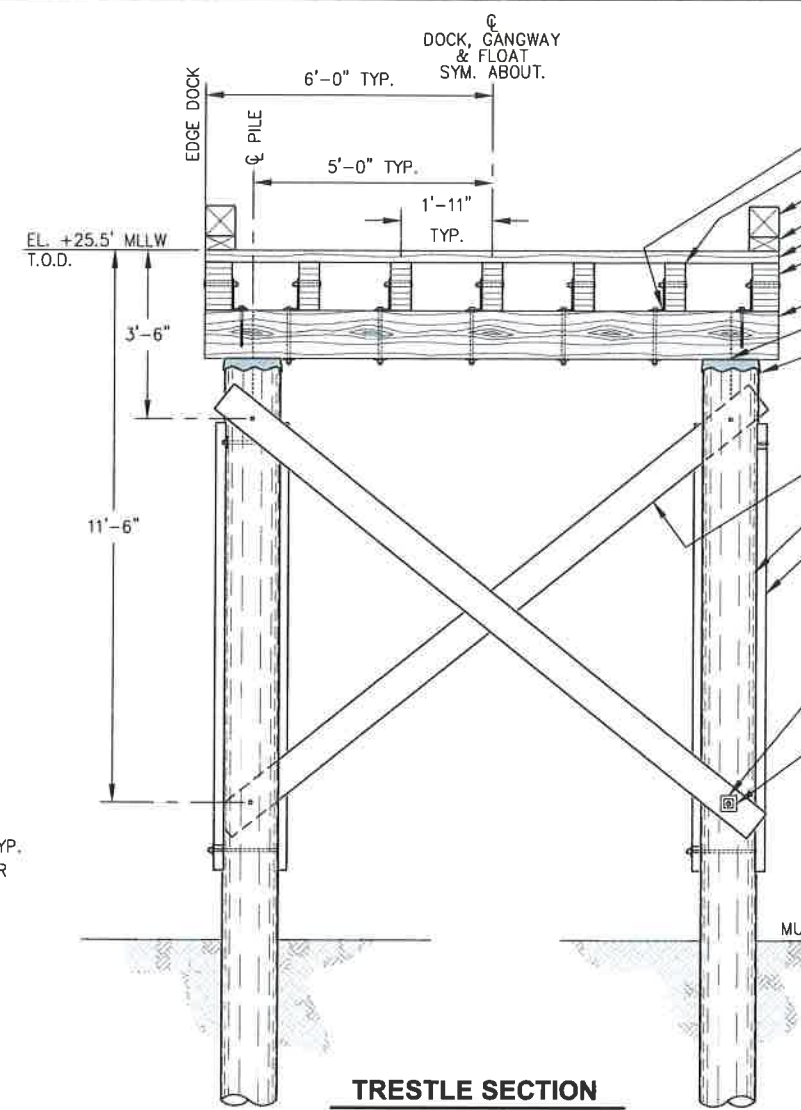
NOTE: INTERIOR STRINGER CONNECTION SHOWN. EXTERIOR STRINGER CONNECTION SIMILAR.



**STRINGER CONNECTION - PLAN**

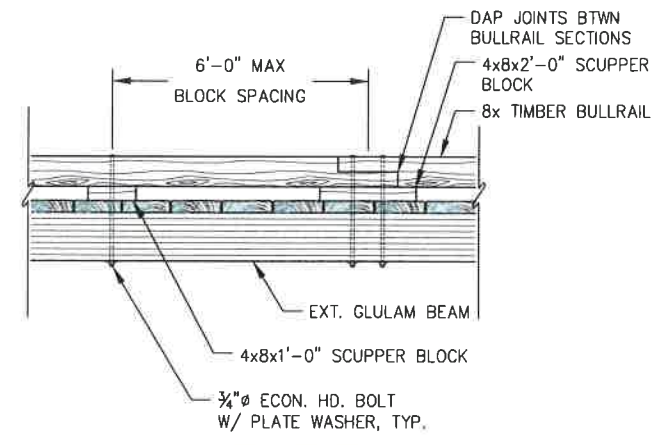


**STRINGER SPLICE/CONNECTION - PLAN**

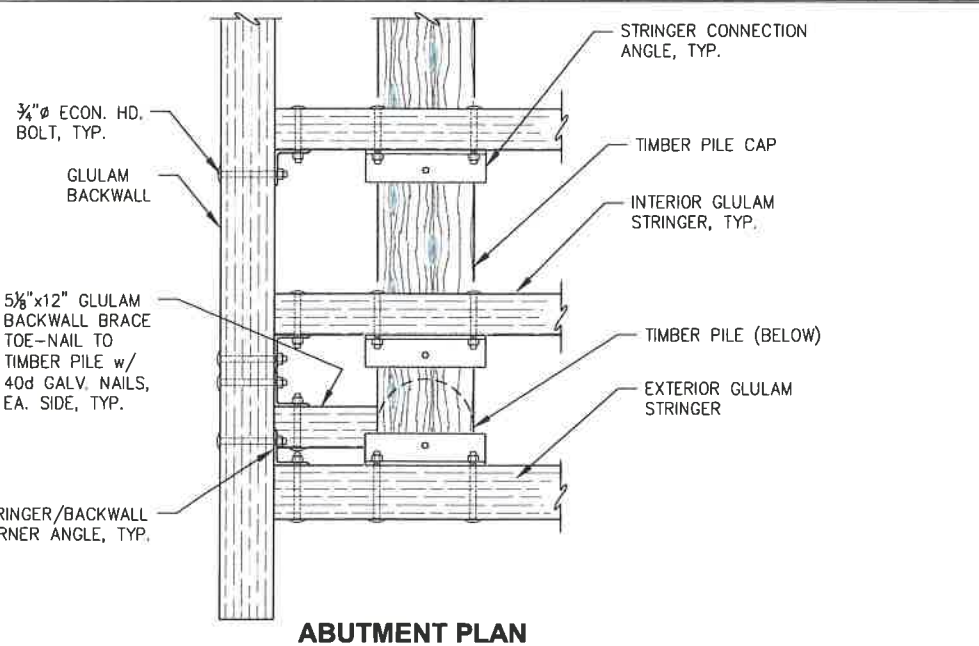
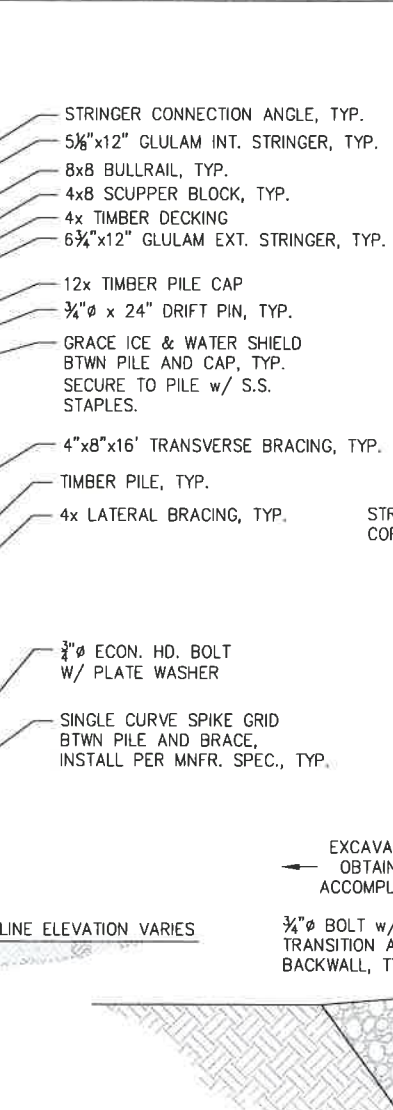


**TRESTLE SECTION**

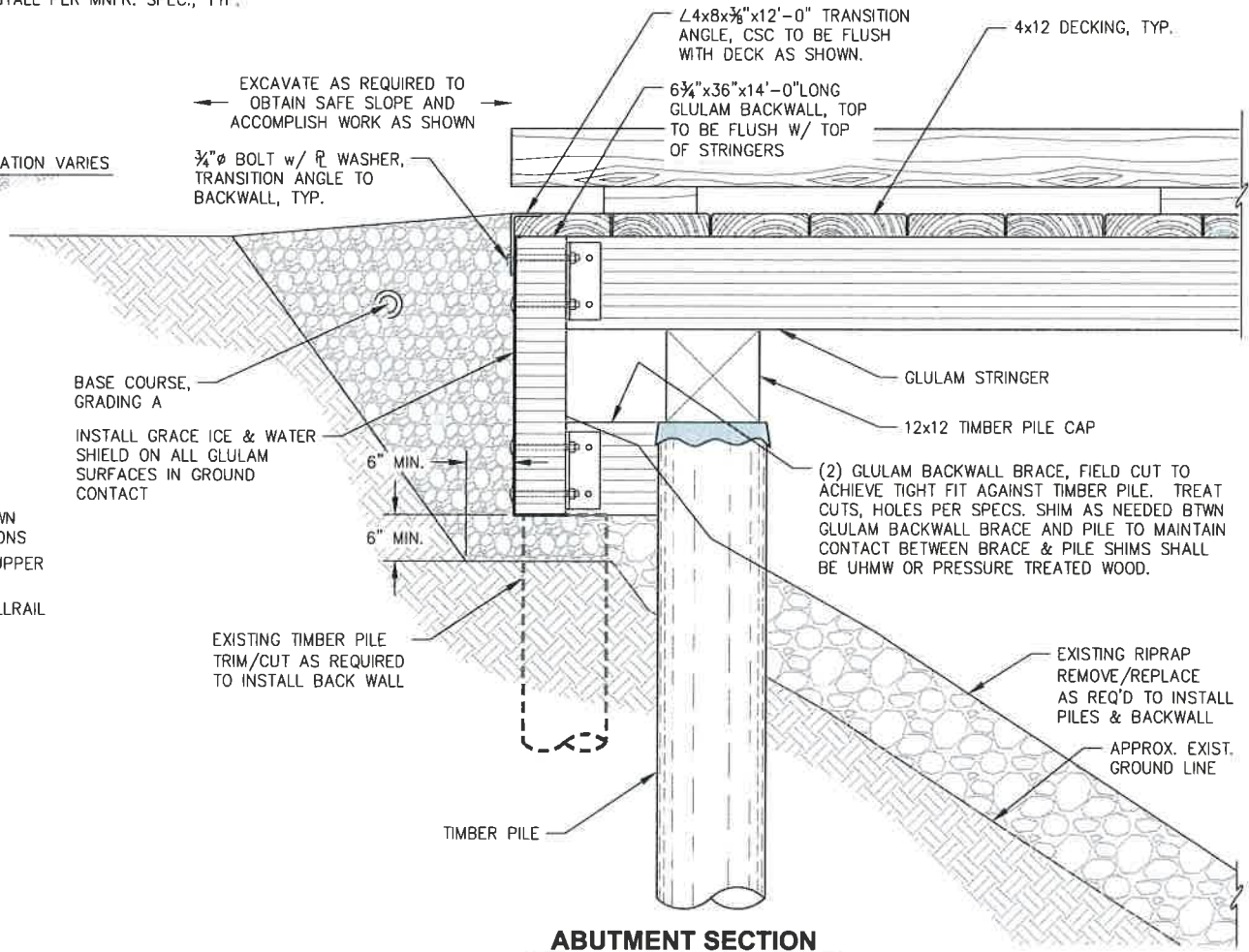
NOTES:  
1. REMOVE AND REPLACE EXISTING RIPRAP AS REQ'D AT PILE LOCATIONS AND AT GLULAM BACKWALL.



**BULLRAIL DETAILS**



**ABUTMENT PLAN**



**ABUTMENT SECTION**



REVISIONS					
REV.	DATE	DESCRIPTION	DWN.	CKD.	APP.

**P N D**  
ENGINEERS, INC.

9360 Glacier Highway, Ste. 100  
Juneau, Alaska 99801  
Phone: 907-586-2093  
Fax: 907-586-2099  
www.pndengineers.com

DESIGN: MS    CHECKED: JLD    SCALE: AS SHOWN  
DRAWN: MS/WRB    APPROVED: CRS



**CITY & BOROUGH OF JUNEAU, ALASKA**  
**FISHERIES TERMINAL DOCK REPLACEMENT**  
CONTRACT NO. DH13-438

SHEET TITLE:  
**DOCK & ABUTMENT DETAILS**

DATE: 3/7/13

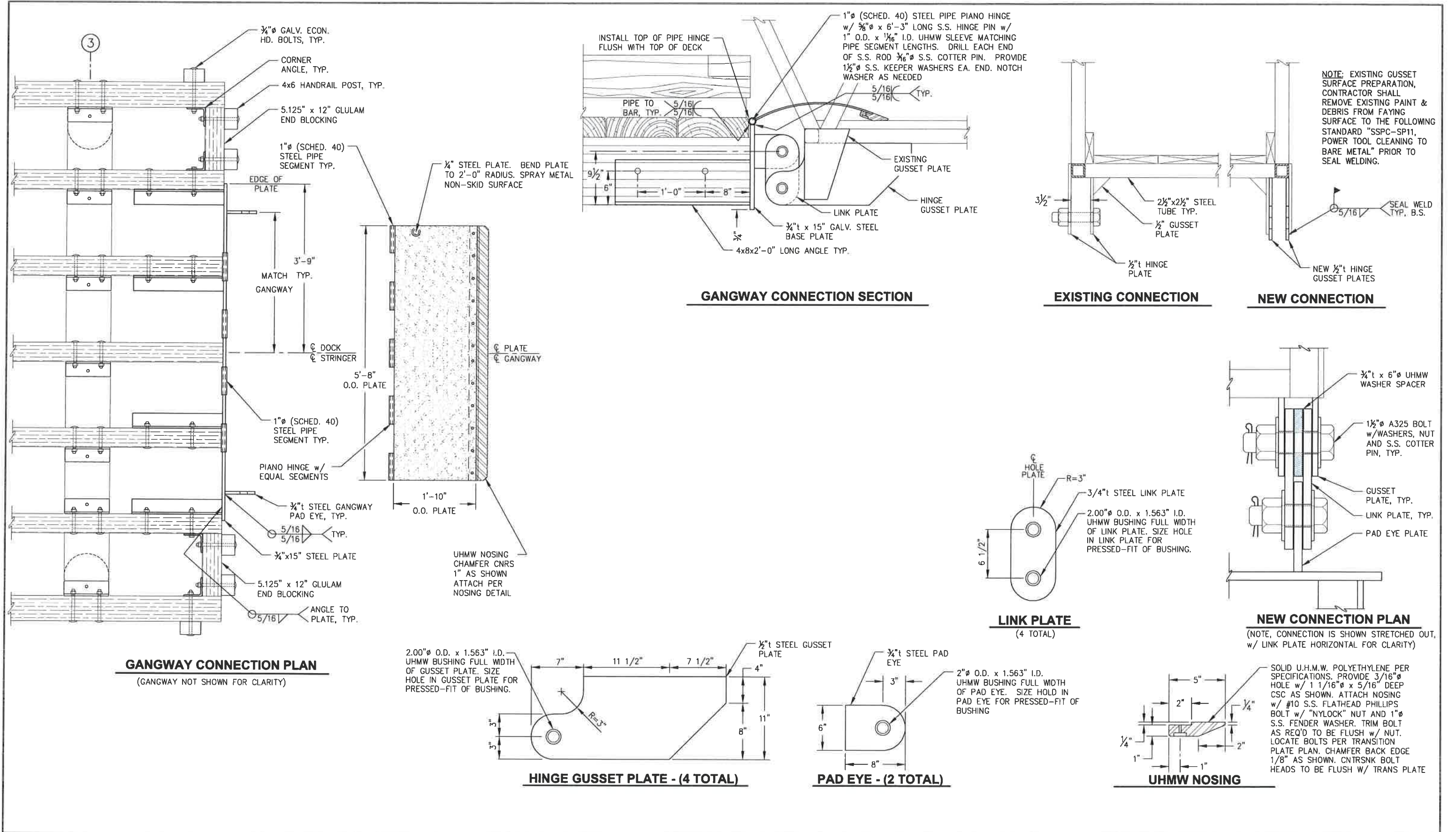
PN&D PROJECT NO: 122075    DWG. FILE:

**1.04**  
SHEET 4 OF 6

N:\122075\Juneau Fisheries Terminal\Drawings\1.03\_1.05 Details.dwg, 3/12/2013 9:20:09 AM



N:\122075 Juneau Fisheries Terminal\Drawings\1.03\_1.05 Details.dwg, 3/12/2013 9:20:23 AM



REVISIONS					
REV.	DATE	DESCRIPTION	DWN.	CKD.	APP.

**P N D**  
ENGINEERS, INC.

9360 Glacier Highway, Ste. 100  
Juneau, Alaska 99801  
Phone: 907-586-2093  
Fax: 907-586-2099  
www.pndengineers.com

DESIGN: MS      CHECKED: JLD      SCALE: AS SHOWN  
DRAWN: MS/WRB      APPROVED: CRS



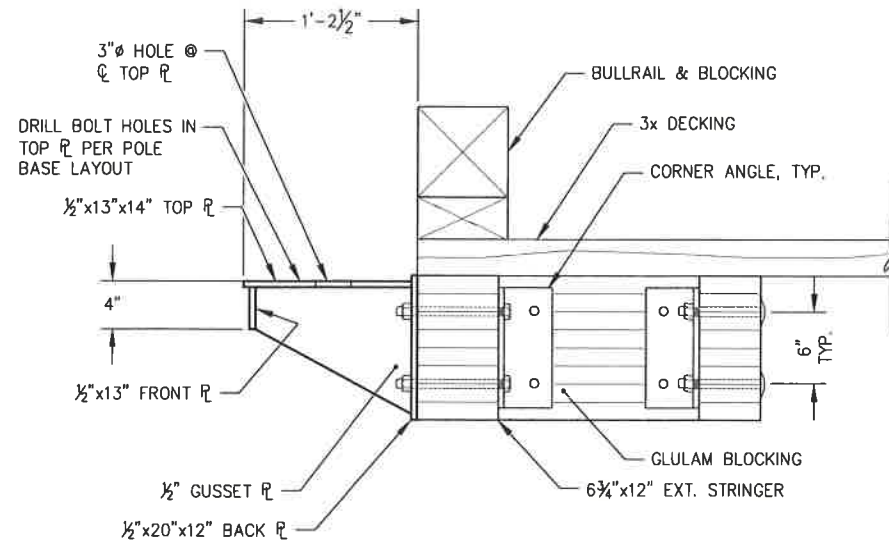
**CITY & BOROUGH OF JUNEAU, ALASKA**  
**FISHERIES TERMINAL DOCK REPLACEMENT**  
CONTRACT NO. DH13-438

SHEET TITLE:  
**TYPICAL DETAILS**

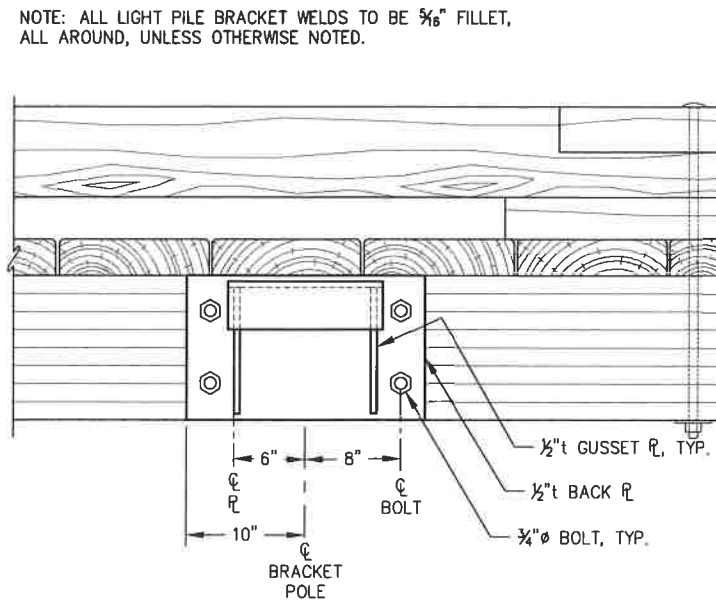
DATE: 3/7/13

PN&D PROJECT NO.: 122075      DWG. FILE:

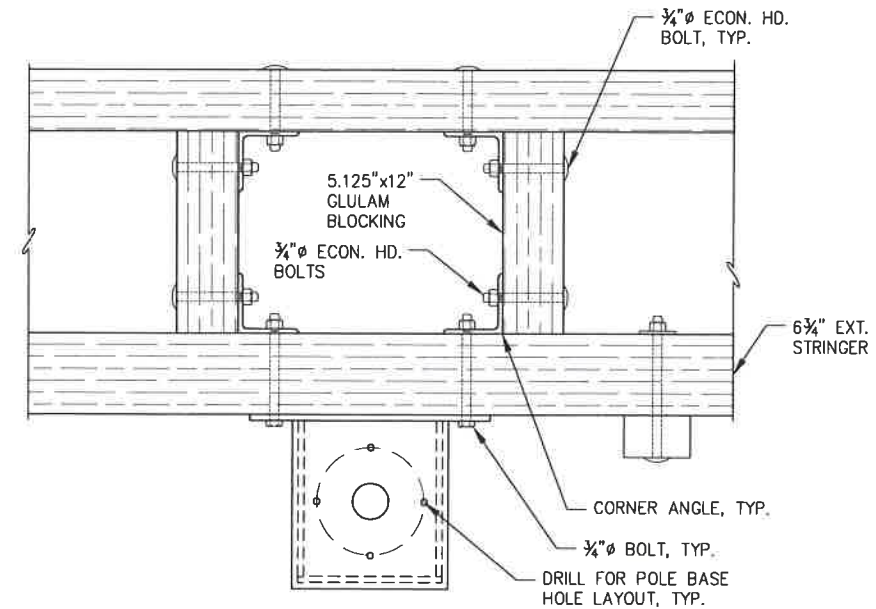
**1.05**  
SHEET 5 OF 6



**LIGHT POLE BRACKET - SECTION**

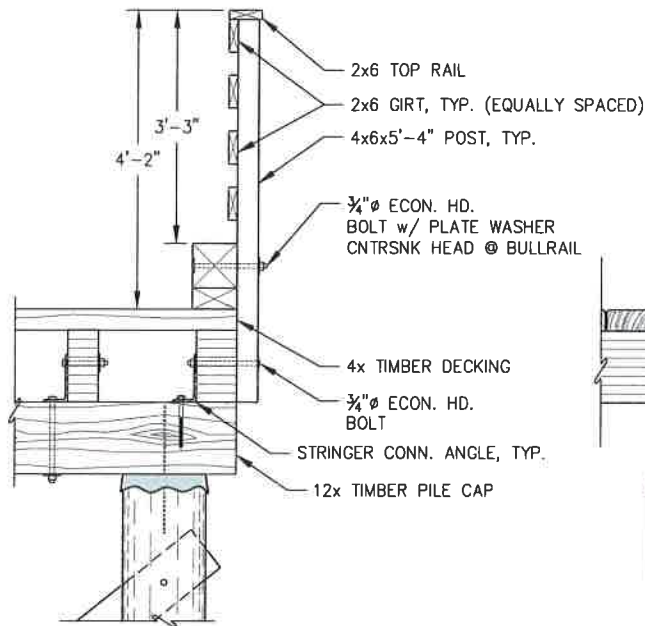


**LIGHT POLE BRACKET - ELEVATION**

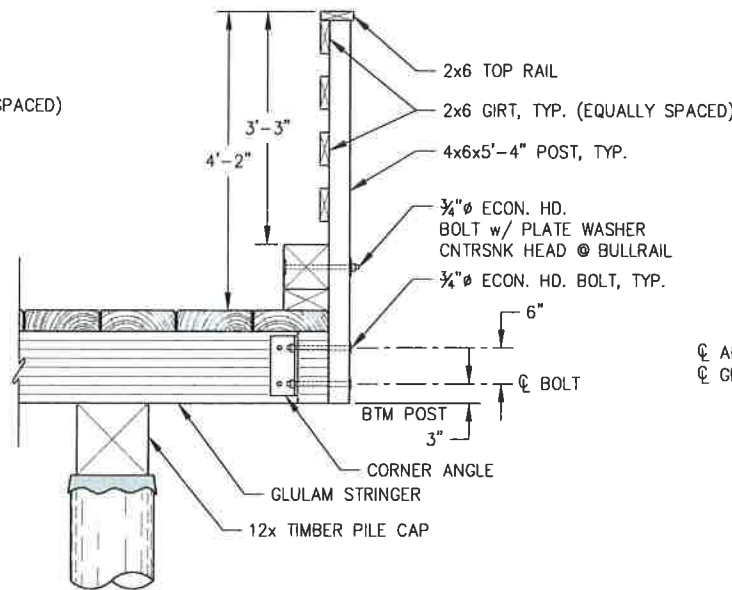


**LIGHT POLE BRACKET - PLAN**

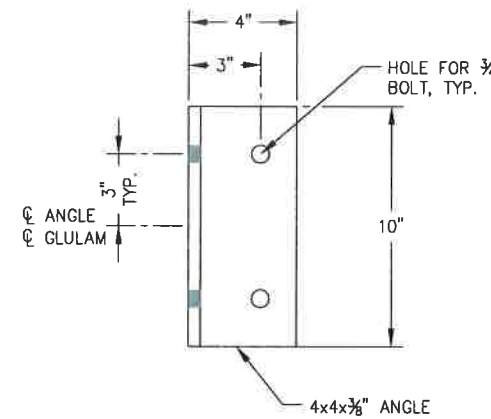
NOTE: ALL LIGHT POLE BRACKET WELDS TO BE 3/8" FILLET, ALL AROUND, UNLESS OTHERWISE NOTED.



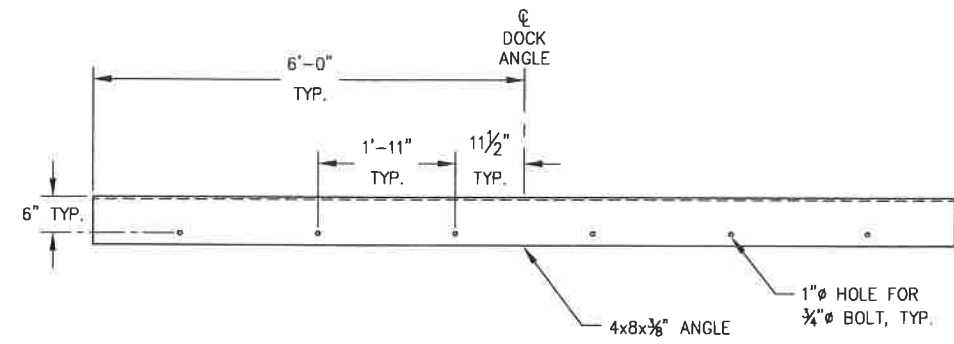
**HANDRAIL TYPICAL SECTION**



**HANDRAIL SECTION AT CORNER ANGLE**



**CORNER ANGLE ELEVATION**



**TRANSITION ANGLE ELEVATION**



REVISIONS					
REV.	DATE	DESCRIPTION	DWN.	CKD.	APP.



9360 Glacier Highway, Ste. 100  
Juneau, Alaska 99801  
Phone: 907-586-2093  
Fax: 907-586-2099  
www.pndengineers.com

DESIGN: MS CHECKED: JLD  
DRAWN: MS/WRB APPROVED: CRS

SCALE: AS SHOWN



**CITY & BOROUGH OF JUNEAU, ALASKA**  
**FISHERIES TERMINAL DOCK REPLACEMENT**  
CONTRACT NO. DH13-438

SHEET TITLE: **TYPICAL DETAILS**

PN&D PROJECT NO: 122075 DWG. FILE:

**1.06**  
SHEET 6 OF 6