



ADDENDUM TO THE CONTRACT

for the

Juneau School District (JSD) Security Camera Installations

Contract No. E13-164

ADDENDUM NO.: TWO

CURRENT DEADLINE FOR BIDS:
January 24, 2013

PREVIOUS ADDENDA: ONE

ISSUED BY: City and Borough of Juneau
ENGINEERING DEPARTMENT
155 South Seward Street
Juneau, Alaska 99801

DATE ADDENDUM ISSUED: January 10, 2013

The following items of the contract are modified as herein indicated. All other items remain the same. This addendum has been issued and is posted online. Please refer to the CBJ Engineering Contracts Division webpage at:

<http://www.juneau.org/engineering ftp/contracts/Contracts.php>

DRAWINGS:

- Item No. 1 SHEET E0, GENERAL NOTES, NOTE No. 1, **Delete** the sentences: "The CBJ may provide some of the equipment. Obtain a list of materials to be provided by the CBJ". **Change** the last sentence to read: "Provide all labor and materials required to do the work and to provide operational video camera systems in the schools as shown on the drawings and specifications.
- Item No. 2 SHEET E0, GENERAL NOTES, NOTE No. 9, **Delete** in its entirety and **replace** with the following:
- "9. In Glacier Valley Elementary School, existing switches are located in each classroom. These are POE switches. The new cameras shall be connected to these switches. There is adequate room in the existing switches to connect the new cameras. The cameras shall reside on the existing computer network system. In the rest of the schools new switches shall be provided where shown and all cameras will be connected to the new switches. The new switches shall be connected together to form their own computer network."

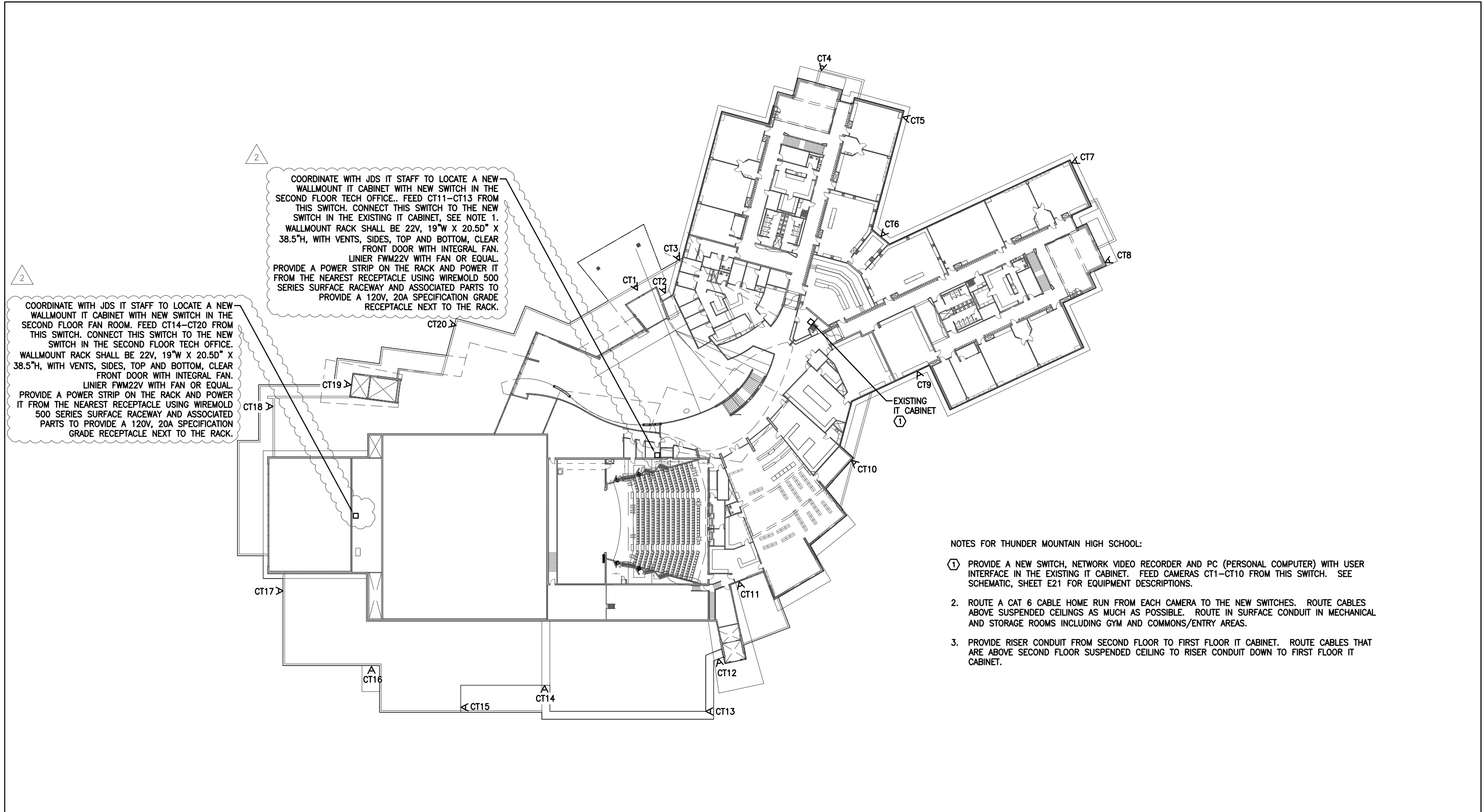
- Item No. 3 SHEET E0, GENERAL NOTES, **Add** the following note:
- “15. Prior to bidding perform a site inspection of each school to determine room type and routing options for cabling and conduit. During the site inspection determine the location of the existing switches in the classrooms. It is the responsibility of the contractor to determine the routing of the conduit and cables through each school. It is the responsibility of the contractor to determine exactly how to mount all equipment including cameras. Paint all installed equipment and materials to match the existing surfaces (except where concealed).”
- Item No. 4 SHEET E5, GLACIER VALLEY ELEMENTARY SCHOOL CAMERA PLACEMENT PLAN, **Add** the following note:
- “6. The existing switches in the classrooms are POE (power over ethernet switches).”
- Item No. 5 SHEET E12, HARBORVIEW ELEMENTARY SCHOOL CAMERA SCHEDULE, **Change** the note reference in comments for cameras CHB1 and CHB2 from “Note 3” to Note “4”.
- Item No. 6 SHEET E15, RIVERBEND ELEMENTARY SCHOOL CAMERA PLACEMENT DETAILS, **Add** the following to camera CR12, 13 photo Note:
- “Mount the two cameras to the pole at four feet and five feet below the light fixture. Use the PELCO pole mount adapter to mount the camera to the pole. Aim the cameras as shown on sheet E13. Drill a hole in the pole and add a grommet to the hole. Route the cable through the camera mount then through the hole to the inside of the pole.”
- Item No. 7 SHEET E17 THUNDER MOUNTAIN HIGH SCHOOL CAMERA PLACEMENT DETAILS, **Delete and replace** with Sheet E17 labeled Addendum No. 2 attached to this addendum.
- Item No. 8 SHEET E21, GENERAL CAMERA DETAILS, **Delete** Note No. 2 for Detail No. 1. and **replace** it with the following:
- “2. The network switches will operate independently of the existing school computer network. Provide the quantity of switches as shown on the camera placement plan for the school. Connect all the switches together as shown in this schematic or as described on the camera placement plan for the school.”
- Item No. 9 SHEET E21, GENERAL CAMERA DETAILS, **Add** the following to Note 6 for Detail No. 1: “The computer shall have a Windows XP Professional SP2 operating system minimum.”



By: _____
Jennifer Mannix,
Contract Administrator

Total number of pages contained within this Addendum: 3

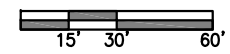
r:\113 CBU\26 Juneau school district security camera system\1. working drawings\E17.dwg, 1/10/2013 12:15:49 PM



NOTES FOR THUNDER MOUNTAIN HIGH SCHOOL:

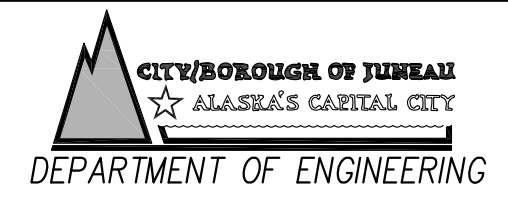
- ① PROVIDE A NEW SWITCH, NETWORK VIDEO RECORDER AND PC (PERSONAL COMPUTER) WITH USER INTERFACE IN THE EXISTING IT CABINET. FEED CAMERAS CT1-CT10 FROM THIS SWITCH. SEE SCHEMATIC, SHEET E21 FOR EQUIPMENT DESCRIPTIONS.
- 2. ROUTE A CAT 6 CABLE HOME RUN FROM EACH CAMERA TO THE NEW SWITCHES. ROUTE CABLES ABOVE SUSPENDED CEILINGS AS MUCH AS POSSIBLE. ROUTE IN SURFACE CONDUIT IN MECHANICAL AND STORAGE ROOMS INCLUDING GYM AND COMMONS/ENTRY AREAS.
- 3. PROVIDE RISER CONDUIT FROM SECOND FLOOR TO FIRST FLOOR IT CABINET. ROUTE CABLES THAT ARE ABOVE SECOND FLOOR SUSPENDED CEILING TO RISER CONDUIT DOWN TO FIRST FLOOR IT CABINET.

① THUNDER MOUNTAIN HIGH SCHOOL CAMERA PLACEMENT PLAN



ADDENDUM 2

SCALE	NOTED		
DESIGNED	MGM		
DRAWN	EJV		
CHECKED	MGM		
DATE	NOV, 2012		
REV	DATE	BY	DESCRIPTION
2	1/13	MGM	ADDENDUM 2



JSD SECURITY CAMERA INSTALLATIONS
 CBJ CONTRACT NO. E13-164



MORRIS ENGINEERING GROUP LLC
 12480 Mendenhall Loop Road Juneau AK 99801
 Phone: 907-789-3350
 Fax: 907-789-3360

THUNDER MOUNTAIN HIGH SCHOOL CAMERA PLACEMENT PLAN

E17
 SHEET NO. E17 of E22