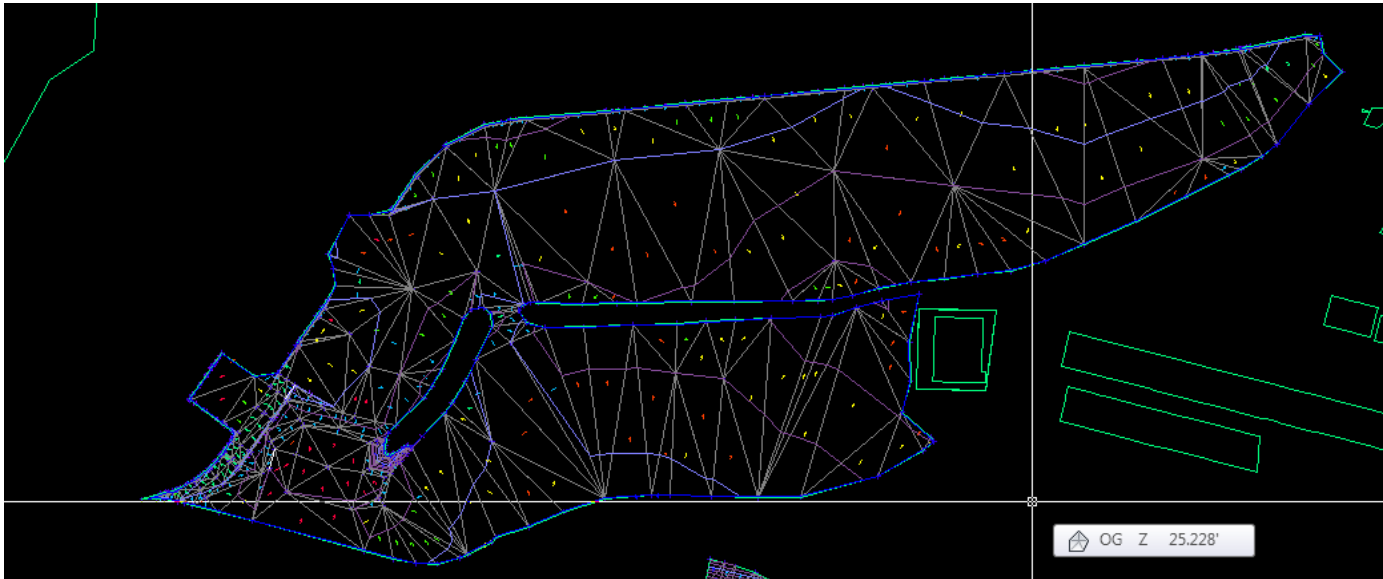


NW Development Area

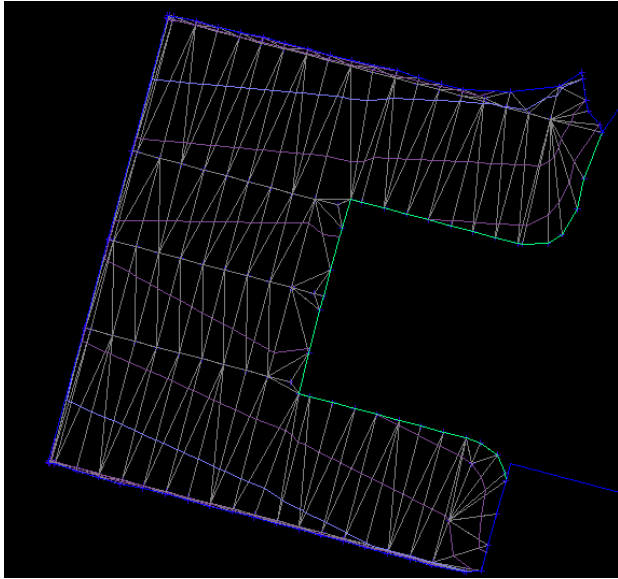


Area of MALSR pad and ramp: 5,110 SF	9 inches thick	Total Vol = 3,832.5 CF	= 141.94 CY
Area of MALSR access road: 5,050 SF	9 inches thick	Total Vol = 3787.5 CF	= 140.28 CY
Area of NW Development cap: (462,831 – 7,204) SF = 455,627 SF	4 inches thick	Total Vol = 151,875.67 CF	= 5,625.03 CY

Statistics	Value
General	
TIN	
Volume	
Base Surface	OG
Comparison Surface	_NW Dev and Roads
Cut Factor	1.000
Fill Factor	1.000
Cut volume (adjusted)	2040.78 Cu. Yd.
Fill volume (adjusted)	4857.12 Cu. Yd.
Net volume (adjusted)	2816.34 Cu. Yd. <Fill>
Cut volume (unadjusted)	2040.78 Cu. Yd.
Fill volume (unadjusted)	4857.12 Cu. Yd.
Net volume (unadjusted)	2816.34 Cu. Yd. <Fill>

	5,907.25 CY
Total Fill Vol =	4,857.12 CY
-	5,907.25 CY
-	1,050.13 CY
Total Cut Vol =	2,040.78 CY
+	1,050.13 CY
	3,090.91 CY

RW 8 RSA Surfacing



Area of RSA Surfacing: 186,060 SF

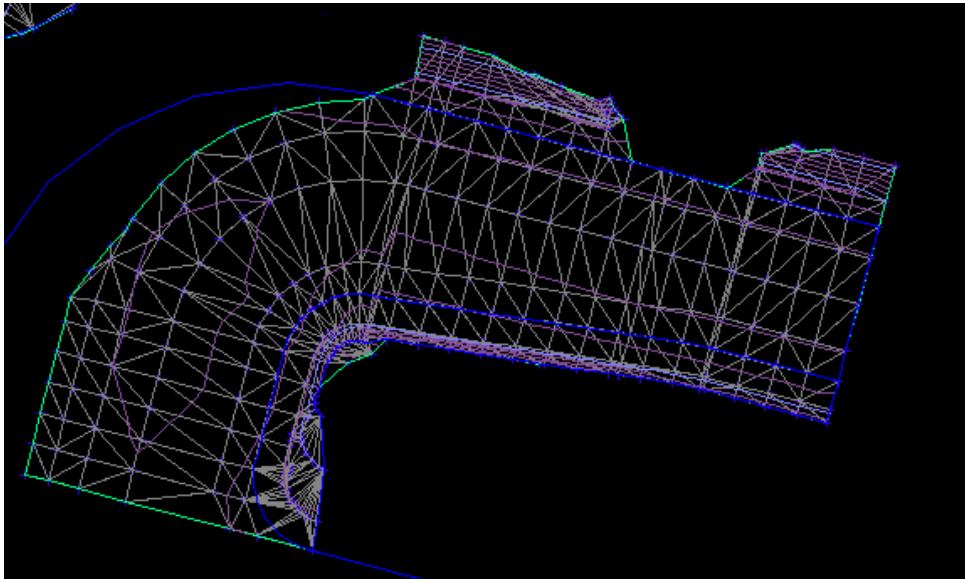
9 inches thick

Total Vol = 139,545 CF = 5,168.33 CY

Surface Properties - Vol 08 RSA	
Information Definition Analysis Statistics	
Statistics	Value
⊕ General	
⊕ TIN	
⊖ Volume	
Base Surface	OG
Comparison Surface	_RW 08 Surface
Cut Factor	1.000
Fill Factor	1.000
Cut volume (adjusted)	304.44 Cu. Yd.
Fill volume (adjusted)	4167.31 Cu. Yd.
Net volume (adjusted)	3862.87 Cu. Yd. <Fill>
Cut volume (unadjusted)	304.44 Cu. Yd.
Fill volume (unadjusted)	4167.31 Cu. Yd.
Net volume (unadjusted)	3862.87 Cu. Yd. <Fill>

Total Fill Vol =	4,167.31 CY
-	5,168.33 CY
-	1,001.02 CY
Total Cut Vol =	304.44 CY
+	1,001.02 CY
	1,305.46 CY

TW B Relocation



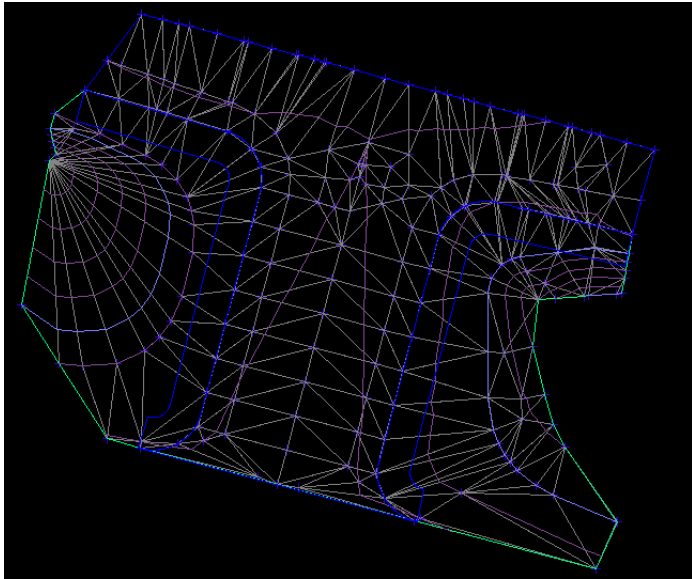
Area of TW HMA: 107,926 SF 4 inches thick
 Area of TW CABC: 22,860 SF *Assume existing sect. is adequate 18 inches thick
 Area of TW Subbase: 22,860 SF *Assume existing sect. is adequate 18 inches thick
 Area of TW Shoulder: 13,900 SF 9 inches thick

Total Vol = 35,975.33 CF = 1,332.42 CY
 Total Vol = 34,290.00 CF = 1,270.00 CY
 Total Vol = 34,290.00 CF = 1,270.00 CY
 Total Vol = 10,425 CF = 386.11 CY

Statistics	Value
General	
TIN	
Volume	
Base Surface	OG
Comparison Surface	_TW A AND B
Cut Factor	1.000
Fill Factor	1.000
Cut volume (adjusted)	72.22 Cu. Yd.
Fill volume (adjusted)	2765.88 Cu. Yd.
Net volume (adjusted)	2693.66 Cu. Yd. <Fill>
Cut volume (unadjusted)	72.22 Cu. Yd.
Fill volume (unadjusted)	2765.88 Cu. Yd.
Net volume (unadjusted)	2693.66 Cu. Yd. <Fill>

	4,258.53 CY
Total Fill Vol =	2,765.88 CY
-	4,258.53 CY
	1,492.65 CY
Total Cut Vol =	72.22 CY
+	1,492.65 CY
	1,564.87 CY

TW E Realignment



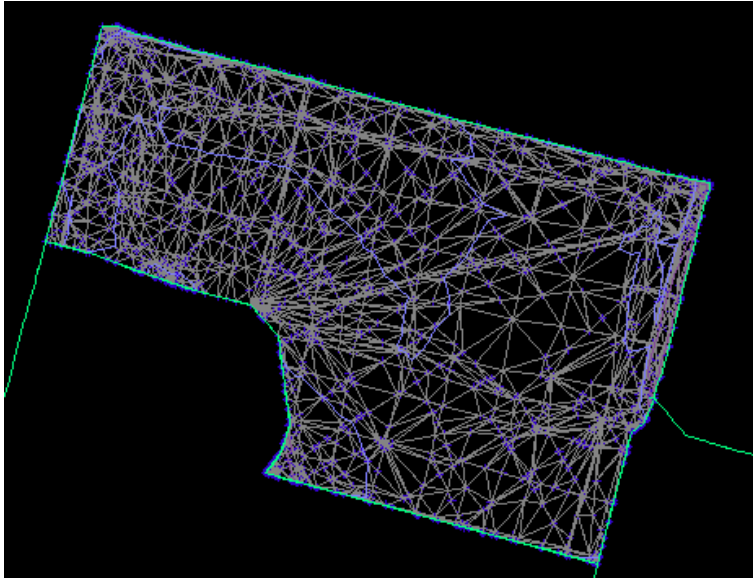
Area of TW HMA: 56,221 SF 4 inches thick
 Area of TW CABC: 56,221 SF 18 inches thick
 Area of TW Subbase: 56,221 SF *Assume existing sect. is adequate 0 inches thick
 Area of TW Shoulder: 7,848.5 + 7,705 = 15,553.5 SF 9 inches thick

Total Vol = 18,740.33 CF = 694.09 CY
 Total Vol = 84,331.50 CF = 3,123.39 CY
 Total Vol = 0 CF = 0 CY
 Total Vol = 11,665 CF = 432.04 CY

Surface Properties - Vol TW A-E	
Information Definition Analysis Statistics	
Statistics	Value
General	
TIN	
Volume	
Base Surface	OG
Comparison Surface	_TW A and E
Cut Factor	1.000
Fill Factor	1.000
Cut volume (adjusted)	791.39 Cu. Yd.
Fill volume (adjusted)	251.64 Cu. Yd.
Net volume (adjusted)	539.75 Cu. Yd. <Cut>
Cut volume (unadjusted)	791.39 Cu. Yd.
Fill volume (unadjusted)	251.64 Cu. Yd.
Net volume (unadjusted)	539.75 Cu. Yd. <Cut>

	4,249.52 CY
Total Fill Vol =	251.64 CY
-	4,249.52 CY
	3,997.88 CY
Total Cut Vol =	791.39 CY
+	3,997.88 CY
	4,789.27 CY

TW G Relocation



Area of TW HMA: 135,804 SF
 Area of TW CABC: 135,804 SF
 Area of TW Subbase: 135,804 SF
 Area of TW Shoulder: 12,939 SF

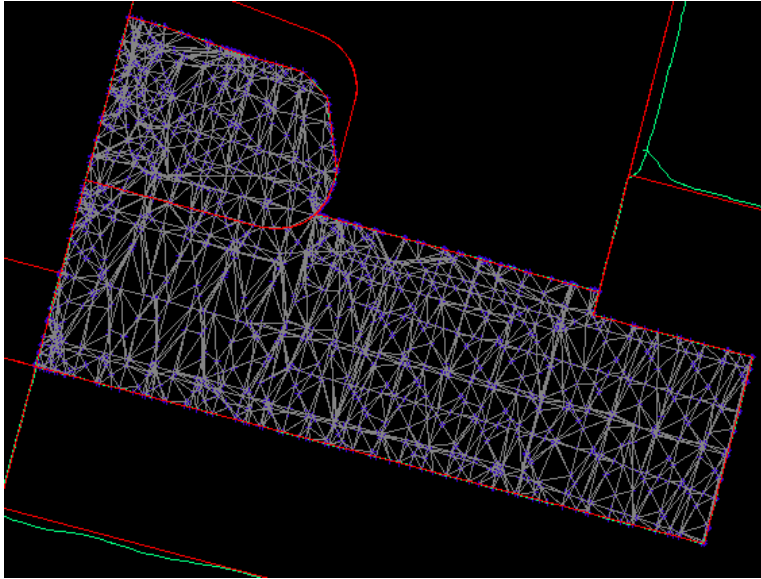
4 inches thick
 18 inches thick
 18 inches thick
 9 inches thick

Total Vol = 45,268.0 CF = 1,676.59 CY
 Total Vol = 203,706.0 CF = 7,544.67 CY
 Total Vol = 203,706.0 CF = 7,544.67 CY
 Total Vol = 9,704.25 CF = 359.42 CY

Surface Properties - Vol TW A-G	
Information Definition Analysis Statistics	
Statistics	Value
General	
TIN	
Volume	
Base Surface	OG
Comparison Surface	_TW A G RW and BP
Cut Factor	1.000
Fill Factor	1.000
Cut volume (adjusted)	1498.93 Cu. Yd.
Fill volume (adjusted)	707.42 Cu. Yd.
Net volume (adjusted)	791.51 Cu. Yd. <Cut>
Cut volume (unadjusted)	1498.93 Cu. Yd.
Fill volume (unadjusted)	707.42 Cu. Yd.
Net volume (unadjusted)	791.51 Cu. Yd. <Cut>

	17,125.35 CY
Total Fill Vol =	707.42 CY
-	17,125.35 CY
	16,417.93 CY
Total Cut Vol =	1,498.93 CY
+	16,417.93 CY
	17,916.86 CY

RW 26 Extension

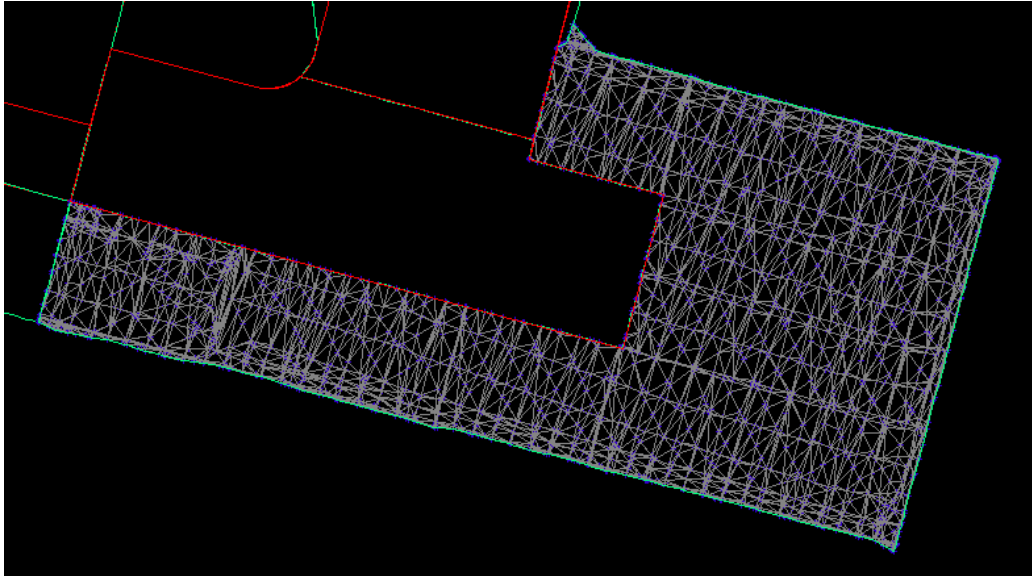


Area of RW HMA:	151,644 SF	4 inches thick	Total Vol = 50,548.00 CF = 1,872.15 CY
Area of RW CABC:	116,644 SF	18 inches thick	Total Vol = 174,966.00 CF = 6,480.22 CY
Area of RW Subbase:	116,644 SF	18 inches thick	Total Vol = 174,966.00 CF = 6,480.22 CY
Area of BP 2-inch:	35,000 SF	*Blast Pad Section varies from RW 9 inches thick	Total Vol = 26,250.00 CF = 972.22 CY
Area of BP Subbase:	35,000 SF	*Blast Pad Section varies from RW 0 inches thick	Total Vol = 0 CF = 0 CY
Area of RW Shoulder:	39,648 SF	9 inches thick	Total Vol = 29,736.00 CF = 1,101.33 CY

Statistics	Value
General	
TIN	
Volume	
Base Surface	OG
Comparison Surface	_TW A G RW and BP
Cut Factor	1.000
Fill Factor	1.000
Cut volume (adjusted)	197.88 Cu. Yd.
Fill volume (adjusted)	3633.19 Cu. Yd.
Net volume (adjusted)	3435.31 Cu. Yd. <Fill>
Cut volume (unadjusted)	197.88 Cu. Yd.
Fill volume (unadjusted)	3633.19 Cu. Yd.
Net volume (unadjusted)	3435.31 Cu. Yd. <Fill>

	16,906.14 CY
Total Fill Vol =	3,633.19 CY
-	16,906.14 CY
-	13,272.95 CY
Total Cut Vol =	197.88 CY
+	13,272.95 CY
	13,470.83 CY

RW 26 RSA



Area of RSA Surfacing: 333,370 SF 9 inches thick Total Vol = 250,027.5 CF = 9,260.28 CY

Surface Properties - Vol 26 RSA	
Information Definition Analysis Statistics	
Statistics	Value
General	
TIN	
Volume	
Base Surface	OG
Comparison Surface	_TW A G RW and BP
Cut Factor	1.000
Fill Factor	1.000
Cut volume (adjusted)	1866.98 Cu. Yd.
Fill volume (adjusted)	3025.13 Cu. Yd.
Net volume (adjusted)	1158.15 Cu. Yd. <Fill>
Cut volume (unadjusted)	1866.98 Cu. Yd.
Fill volume (unadjusted)	3025.13 Cu. Yd.
Net volume (unadjusted)	1158.15 Cu. Yd. <Fill>

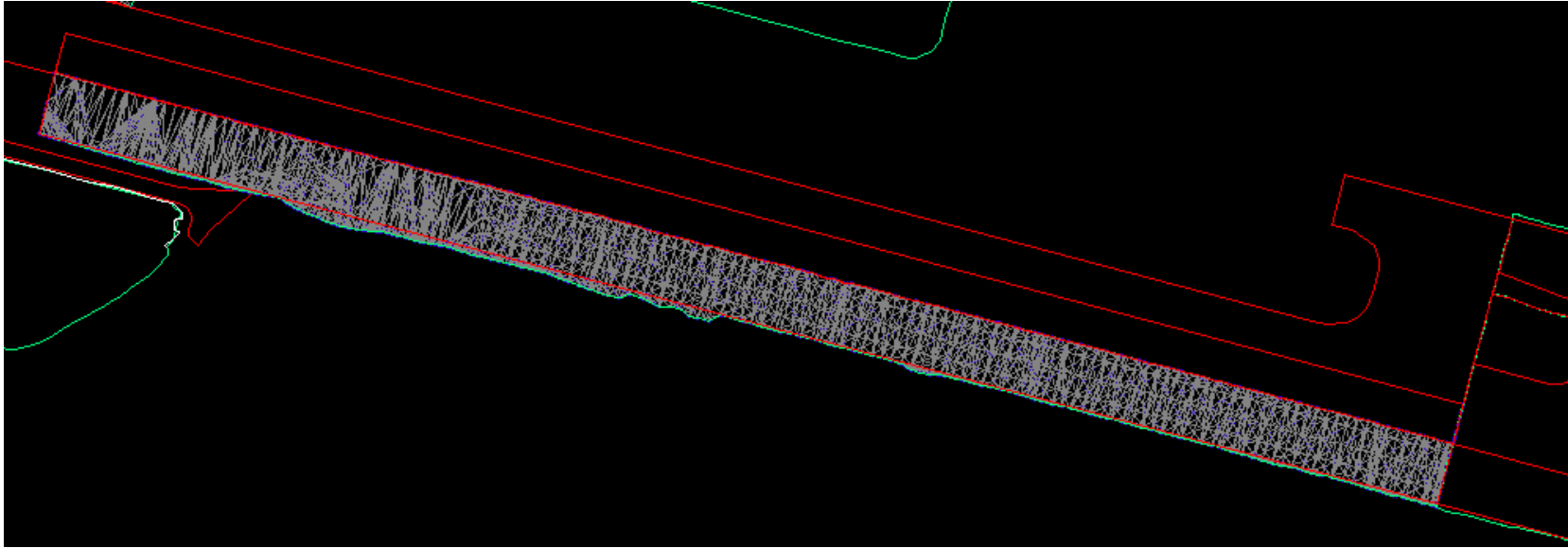
Total Fill Vol = 3,025.13 CY
 - 9,260.28 CY

 - **6,235.15 CY**

Total Cut Vol = 1,866.98 CY
 + 6,235.15 CY

8,102.13 CY

RW RSA Lateral



Area of RSA Surfacing: 528,900 SF 9 inches thick Total Vol = 396,675 CF = 14,691.67 CY

Surface Properties - Vol RSA LAT	
Information Definition Analysis Statistics	
Statistics	Value
General	
TIN	
Volume	
Base Surface	OG
Comparison Surface	_TW A G RW and BP
Cut Factor	1.000
Fill Factor	1.000
Cut volume (adjusted)	87.28 Cu. Yd.
Fill volume (adjusted)	12541.82 Cu. Yd.
Net volume (adjusted)	12454.54 Cu. Yd. <Fill>
Cut volume (unadjusted)	87.28 Cu. Yd.
Fill volume (unadjusted)	12541.82 Cu. Yd.
Net volume (unadjusted)	12454.54 Cu. Yd. <Fill>

Total Fill Vol =	12,541.82 CY
-	14,691.67 CY
-	2,149.85 CY
Total Cut Vol =	87.28 CY
+	2,149.85 CY
-	2,237.13 CY

