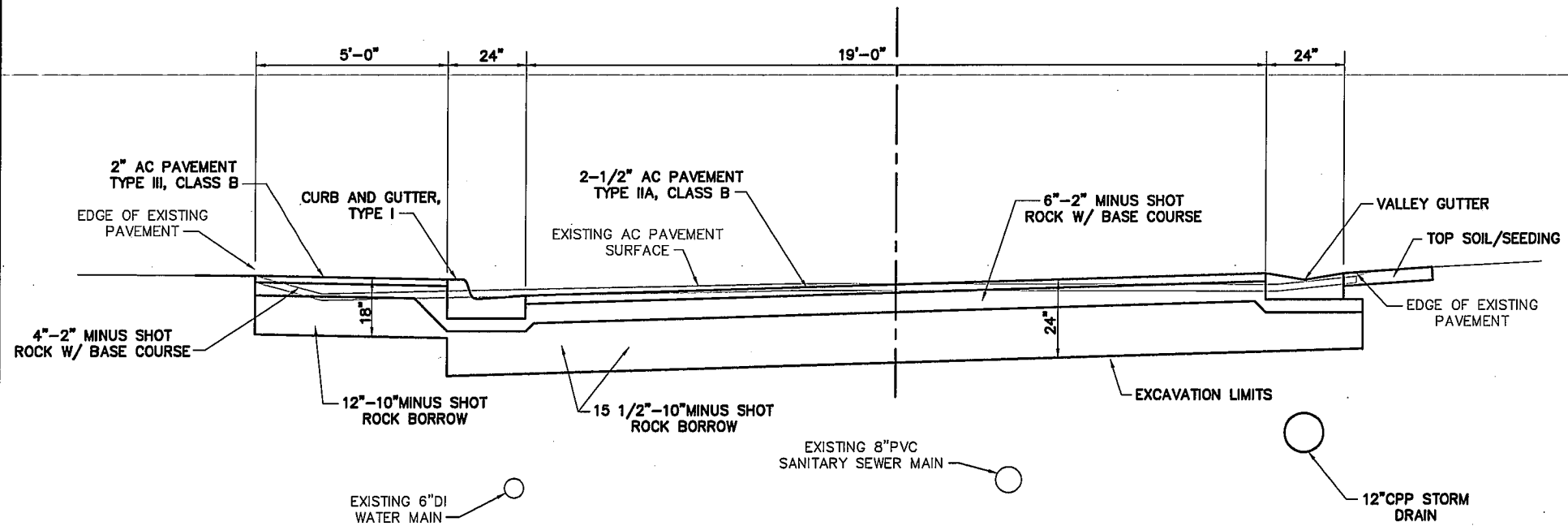


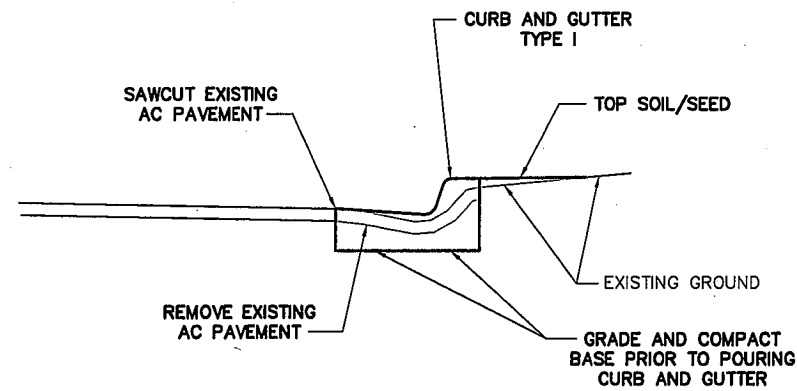
TYPICAL SECTION NOTES

1. SEE HORIZONTAL AND VERTICAL CONTROL, CURB AND GUTTER LAYOUT AND GRADE DRAWINGS FOR GRADING DETAILS.
2. UNDERGROUND ELECTRICAL AND WATER AND SEWER SERVICES NOT SHOWN. SEE PLAN SHEETS FOR LOCATIONS.
3. DRIVEWAYS DISTURBED DURING CONSTRUCTION SHALL BE RECONSTRUCTED TO EQUAL, OR BETTER CONDITION WITH SUBGRADE REPLACED IN LAYERS TO MATCH THOSE REMOVED EXCEPT:
 - A) PAVED DRIVEWAYS SHALL BE SUBCUT TO 24-1/4 INCHES BELOW FINISH GRADE AND REPLACED WITH 18 INCHES OF SHOT ROCK BORROW, 4 INCHES OF BASE COURSE, GRADING D-1, AND 2-1/4 INCHES OF A.C. PAVEMENT FOR SIDEWALKS AND DRIVEWAYS.
 - B) CONCRETE DRIVEWAYS SHALL BE SUBCUT TO 24 INCHES BELOW FINISH GRADE AND REPLACED WITH 14 INCHES OF SHOT ROCK BORROW, 4 INCHES OF BASE COURSE, GRADING D-1, AND 6 INCHES OF CONCRETE.
 - C) ORGANICS, ROOTS, WOOD OR OTHER DELETERIOUS MATERIALS ENCOUNTERED IN THE DRIVEWAYS DURING EXCAVATION OPERATIONS SHALL NOT BE REPLACED, BUT SHALL BE DISPOSED OF AT AN APPROVED DISPOSAL SITE. BACKFILL VOIDS BELOW THE REQUIRED SUBBASE LAYER WITH USABLE MATERIAL FROM EXCAVATION.
4. ACCESS RAMPS SHALL CONFORM TO CBJ STANDARD 105 REGARDING CROSS SLOPES AND TRANSITIONS FOR THE DEPRESSED SIDEWALK, EXCEPT THE BACK OF SIDEWALK SHALL BE DEPRESSED TO PROVIDE A MAXIMUM 2% CROSS SLOPE.
5. TOP OF A.C. PAVEMENT SHALL BE 1/4 INCH TO 1/2 INCH ABOVE THE TOP EDGE OF CONCRETE GUTTER OR TOP OF CURB. TOP OF PAVEMENT GRADES GIVEN ON THE PLANS ARE 1/4 INCH BELOW ACTUAL FINISH PAVEMENT SURFACE.
6. 6-INCH THICK CONCRETE ACCESS RAMP PADS WITH 24"x48" DETECTABLE TILES SHALL BE CONSTRUCTED AT THE LOCATIONS AND TO THE LIMITS SHOWN ON THE DRAWINGS.
7. SANITARY SEWER, WATER AND STORM DRAIN SERVICES ARE NOT SHOWN ON TYPICAL SECTIONS. SEE PLAN VIEW DRAWINGS FOR DETAILS.
8. GRADE TOP OF CURB AT 2%.
9. THE BASE COURSE LAYER SHALL BE 4" TO 5" OF 2-INCH MINUS SHOT ROCK WITH 1" TO 2" TOP LAYER OF BASE COURSE, GRADING D-1 FOR A TOTAL THICKNESS OF 6". THE 2" MINUS SHOT ROCK SHALL BE WELL COMPACTED PRIOR TO PLACING THE BASE COURSE GRADING D-1.
10. BASE COURSE, GRADING D-1, MAY BE USED FOR THE FULL DEPTH OF THE BASE COURSE UNDER THE SIDEWALK AS A NO COST SUBSTITUTION.



TYPICAL SECTION

NTS

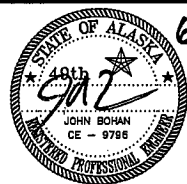


TURN STREET CURB AND GUTTER

NTS

ADDENDUM NO. THREE

Revisions		
Date	Description	Intls.

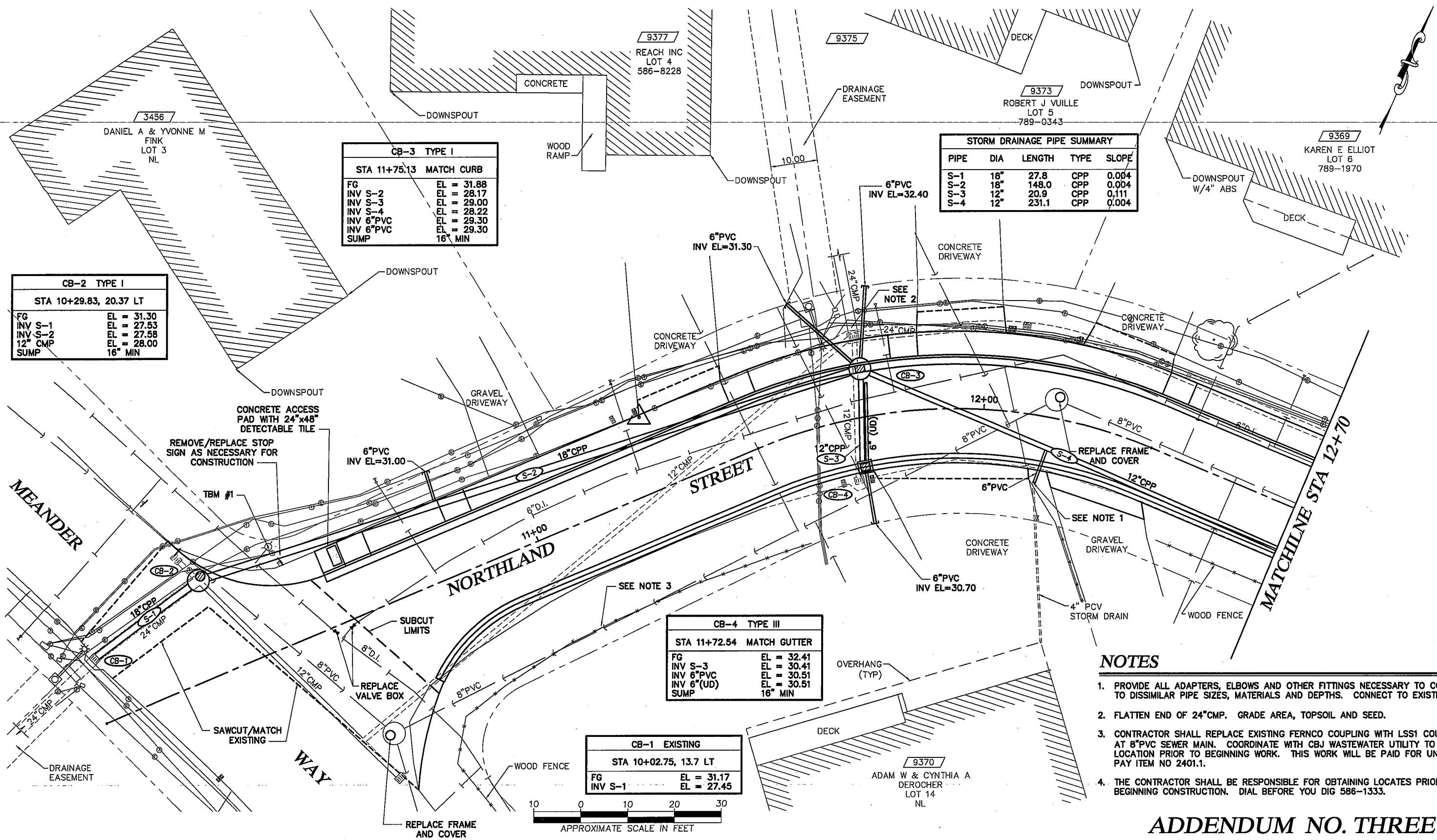


6/14/12
 Prepared by:
 CITY AND BOROUGH OF JUNEAU
 ★ ALASKA'S CAPITAL CITY
 ENGINEERING DEPARTMENT

NORTHLAND STREET RECONSTRUCTION
 CONTRACT NO. E12-224

TYPICAL SECTION AND DETAILS		
DATE: 3/13/12	DRAWN BY: STAFF	SCALE: AS SHOWN

SHEET:
 3A of 14



CB-3 TYPE I	
STA 11+75.13 MATCH CURB	
FG	EL = 31.88
INV S-2	EL = 28.17
INV S-3	EL = 29.00
INV S-4	EL = 28.22
INV 6\"/>	

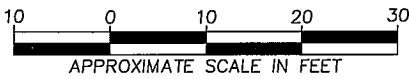
STORM DRAINAGE PIPE SUMMARY				
PIPE	DIA	LENGTH	TYPE	SLOPE
S-1	18"	27.8	CPP	0.004
S-2	18"	148.0	CPP	0.004
S-3	12"	20.9	CPP	0.111
S-4	12"	231.1	CPP	0.004

CB-2 TYPE I	
STA 10+29.83, 20.37 LT	
FG	EL = 31.30
INV S-1	EL = 27.53
INV S-2	EL = 27.58
12\"/>	

CB-4 TYPE III	
STA 11+72.54 MATCH GUTTER	
FG	EL = 32.41
INV S-3	EL = 30.41
INV 6\"/>	

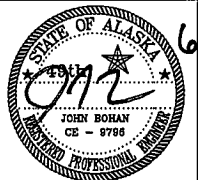
CB-1 EXISTING	
STA 10+02.75, 13.7 LT	
FG	EL = 31.17
INV S-1	EL = 27.45

- NOTES**
1. PROVIDE ALL ADAPTERS, ELBOWS AND OTHER FITTINGS NECESSARY TO CONNECT TO DISSIMILAR PIPE SIZES, MATERIALS AND DEPTHS. CONNECT TO EXISTING
 2. FLATTEN END OF 24\"/>



ADDENDUM NO. THREE

Revisions		
Date	Description	Intls.



Prepared by:
 CITY AND BOROUGH OF JUNEAU
 ★ ALASKA'S CAPITAL CITY
 ENGINEERING DEPARTMENT

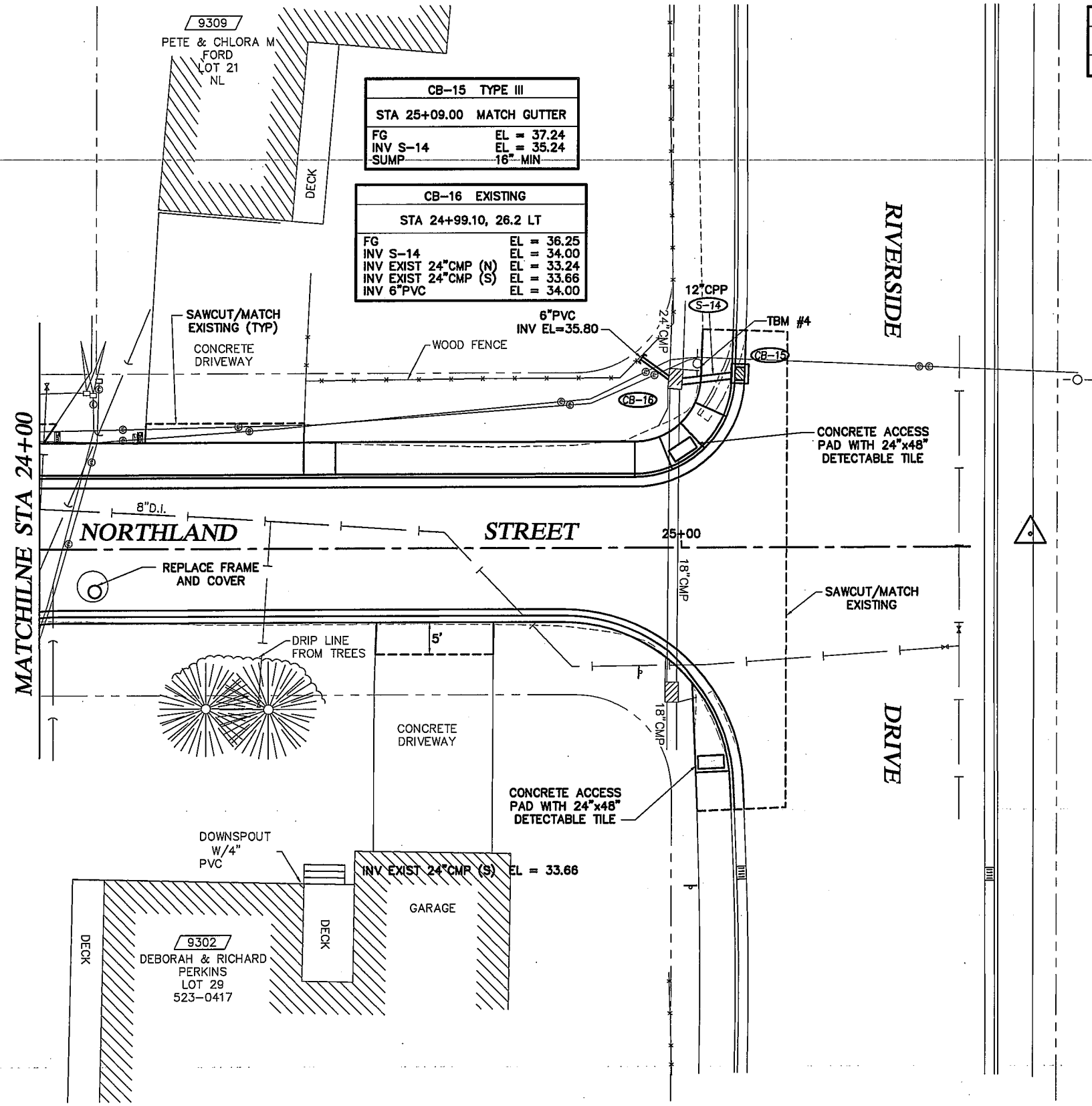
**NORTHLAND STREET
 RECONSTRUCTION
 CONTRACT NO. E12-224**

**PLAN - NORTHLAND STREET
 B.O.P. TO STA 12+70**

DATE: 4/30/12 DRAWN BY: STAFF SCALE: AS SHOWN

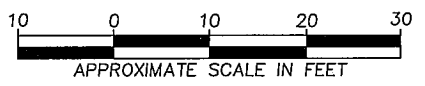
SHEET:
8A of 14

STORM DRAINAGE PIPE SUMMARY				
PIPE	DIA	LENGTH	TYPE	SLOPE
S-14	12"	10.0	CPP	0.124



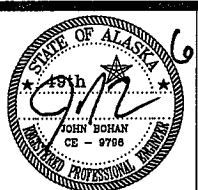
NOTES

1. PROVIDE ALL ADAPTERS, ELBOWS AND OTHER FITTINGS NECESSARY TO CONNECT TO DISSIMILAR PIPE SIZES, MATERIALS AND DEPTHS. CONNECT TO EXISTING.
2. THE CONTRACTOR SHALL BE RESPONSIBLE FOR OBTAINING LOCATES PRIOR TO BEGINNING CONSTRUCTION. DIAL BEFORE YOU DIG 586-1333.



ADDENDUM NO. THREE

Revisions		
Date	Description	Intls.



Prepared by:
 CITY AND BOROUGH OF JUNEAU
 ALASKA'S CAPITAL CITY
 ENGINEERING DEPARTMENT

**NORTHLAND STREET
 RECONSTRUCTION
 CONTRACT NO. E12-224**

**PLAN - NORTHLAND STREET
 STA 24+10 TO E.O.P.**

DATE: 4/30/12 DRAWN BY: STAFF SCALE: AS SHOWN

SHEET:
13A
 of 14